



City of Bellevue

# Wireless Communication Facilities (WCF) Code Amendments

**City Council Study Session**

September 25, 2023

Liz Stead, Land Use Director  
Caleb Miller, Senior Planner  
*Development Services*

Mark Poch, Assistant Director  
*Transportation*



# Direction for Council Consideration

- Enter a finding of necessity for Council to process the LUCA, then direct staff to schedule a public hearing on the proposed Wireless LUCA; and
- Prepare the Wireless BCCA for final action at a future meeting.

# AGENDA



Background



FCC Orders



Objectives



Part 1: Small Wireless Facilities BCCA



Part 2: Wireless Communication Facilities LUCA



Review Process

# Background

- Phase 3 of wireless code amendments
  - Phases 1 and 2 adopted 2019
  - Covered small wireless facilities (SWFs) in the right-of-way (ROW)
- Land Use Code (LUC) regulations adopted 2003
  - Apply to WCFs on private property
  - Few, minor updates since adoption
- Changes to WCF landscape:
  - New technologies
  - Increased demand
  - Limitations on local authority from Federal Communications Commission (FCC)

# FCC Orders

## Shot Clocks (2009, 2018)

Activity	Time Limit
SWF attached to existing structure (collocated)	60 Days
Non-SWF collocated	90 Days
SWF on new structure	90 Days
Non-SWF on new structure	150 Days

## Eligible Facilities Requests (2014)

- Review process for modifications to WCFs
- May not result in substantial change
- Must be approved within 60 days if all criteria are met



Federal  
Communications  
Commission

# BCCA & LUCA Objectives

- **Respond to new technology**
  - SWFs
  - Stealth, screening techniques
- **Adjust, streamline permitting process**
  - Learning from recent permitting experience
- **Align with FCC orders**
  - Eligible Facilities Requests (EFRs)
  - Shot Clocks



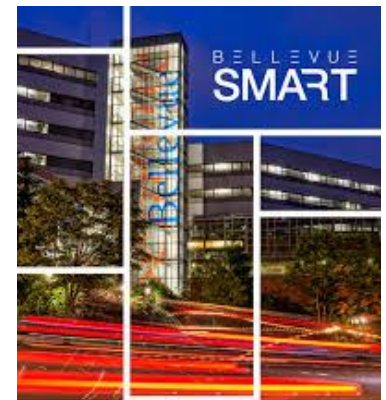
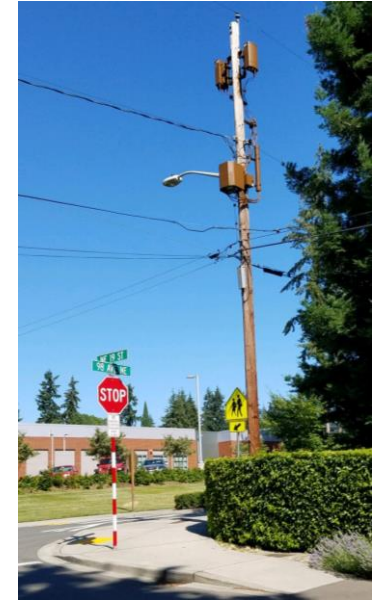
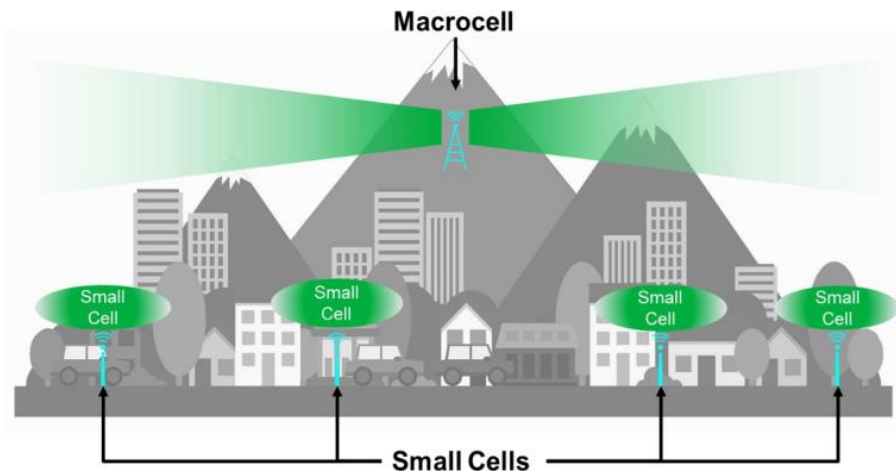


# Part 1: Small Wireless Facilities in the Public Right-of-Way BCCA

Mark Poch, Assistant Director  
*Transportation Department*

# What are Small Wireless Facilities?

- Wireless Communication Facilities with smaller radios and antenna than cell towers
- Can be installed on streetlights, utility poles or private property
- Add wireless capacity in high-traffic areas
- Complement cell towers





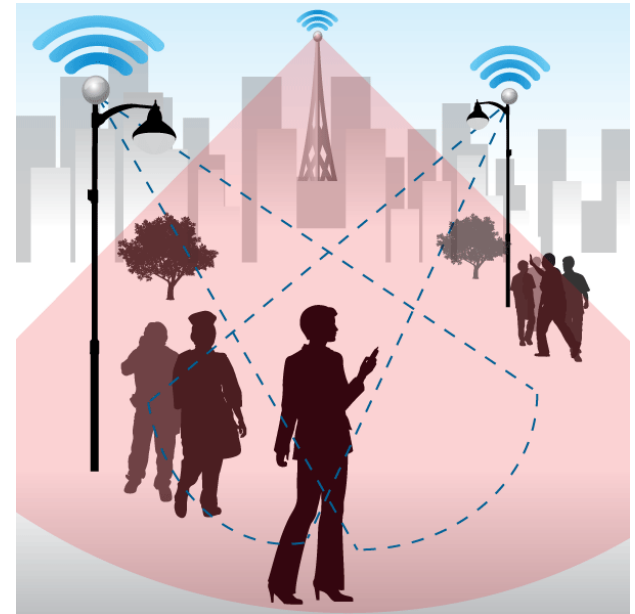
# Small Wireless Facilities in the Public Right-of-Way

## Bellevue City Code

- Code established in 2019 (Chapter 6.08 in Telecommunications)

## Current Status

- 4 complete in Downtown Bellevue
- 3 permits issued for construction
- 15 sites in various stages of permit review
- 50+ pole reservations (180 days)



# Working Relationships

- Monthly meetings scheduled with Verizon, Crown Castle, and AT&T
- Extenet/T-Mobile – frequent meetings
- Bellevue Chamber of Commerce / Carriers / Bellevue
  - Process Improvements
    - Electrical access
    - Geotechnical requirements
    - Code interpretations
    - Property & ADA issues
    - Engineer of record
    - Quick “OTS” reviews
    - Due Diligence
  - Code Amendments

**verizon**<sup>✓</sup>



**T Mobile**

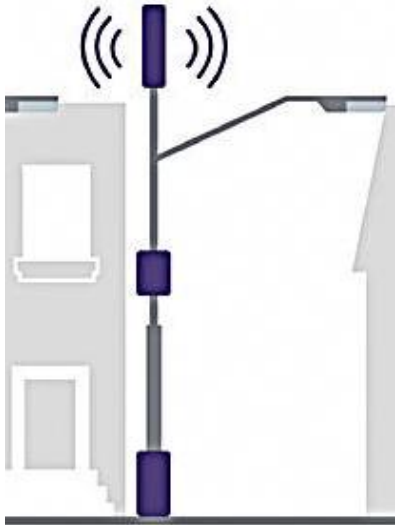


# Ribbon Breaking



# Proposed Code Amendments

- Telecommunications – Chapter 6.08
  - Expanding antenna and equipment placement options
  - Increasing enclosure options
  - Allowing pole and strand mounted SWFs on same pole
  - Increasing permit to operation time allowance
  - Processing eligible facility requests
  - Allowing more temporary installation options





## Part 2: Wireless Communication Facilities (Not in Public Right-of-Way) LUCA

Liz Stead, Land Use Director  
Caleb Miller, Senior Planner  
*Development Services*

# Proposed LUCA

- Re-write of LUC 20.20.195
- Maintain existing standards for:
  - Aesthetics
  - Screening
  - Tower separation
- Codify process for eligible facilities requests
- Comply with FCC shot clocks



# Revised Permit Procedures

WCF Type/Attachment	Approval Process
Eligible Facilities Requests (EFRs)	<b>Permitted.</b> Construction or right-of-way permits may be required.
Modifications to existing WCFs that do not qualify as EFRs	
WCFs attached to existing structures (collocated)	
WCFs attached to new purpose-built structures (towers)	<b>Administrative Conditional Use Permit (ACUP).</b>
Requests for departures from WCF standards	

# Review Process

Action	Date
<b>BCCA:</b> Engagement with stakeholders	2022-2023
<b>LUCA:</b> Engagement with stakeholders	Summer 2023
<b>BCCA/LUCA:</b> City Council Study Session 1	September 25
<b>BCCA:</b> City Council Action	Future Meeting
<b>LUCA:</b> Public Hearing*	Future Meeting
<b>LUCA:</b> City Council Action (if needed)	Future Meeting

*\*Council may take action following the hearing*





# Direction for Council Consideration

- Enter a finding of necessity for Council to process the LUCA, then direct staff to schedule a public hearing on the proposed Wireless LUCA; and
- Prepare the Wireless BCCA for final action at a future meeting.