



City of Bellevue

Ashwood Park Master Plan Update

Pam Fehrman
Zachariah Collom
Parks and Community Services

Parks & Community Services Board | October 16, 2024

AGENDA



Ashwood Park Background



Community Engagement



Conceptual Plan Alternatives



Conceptual Plan Feedback



Next Steps



Questions and Comments

A decorative blue line starts from the left edge of the slide, goes down, then right, and then down again. A solid blue circle is at the top-left corner of this line.

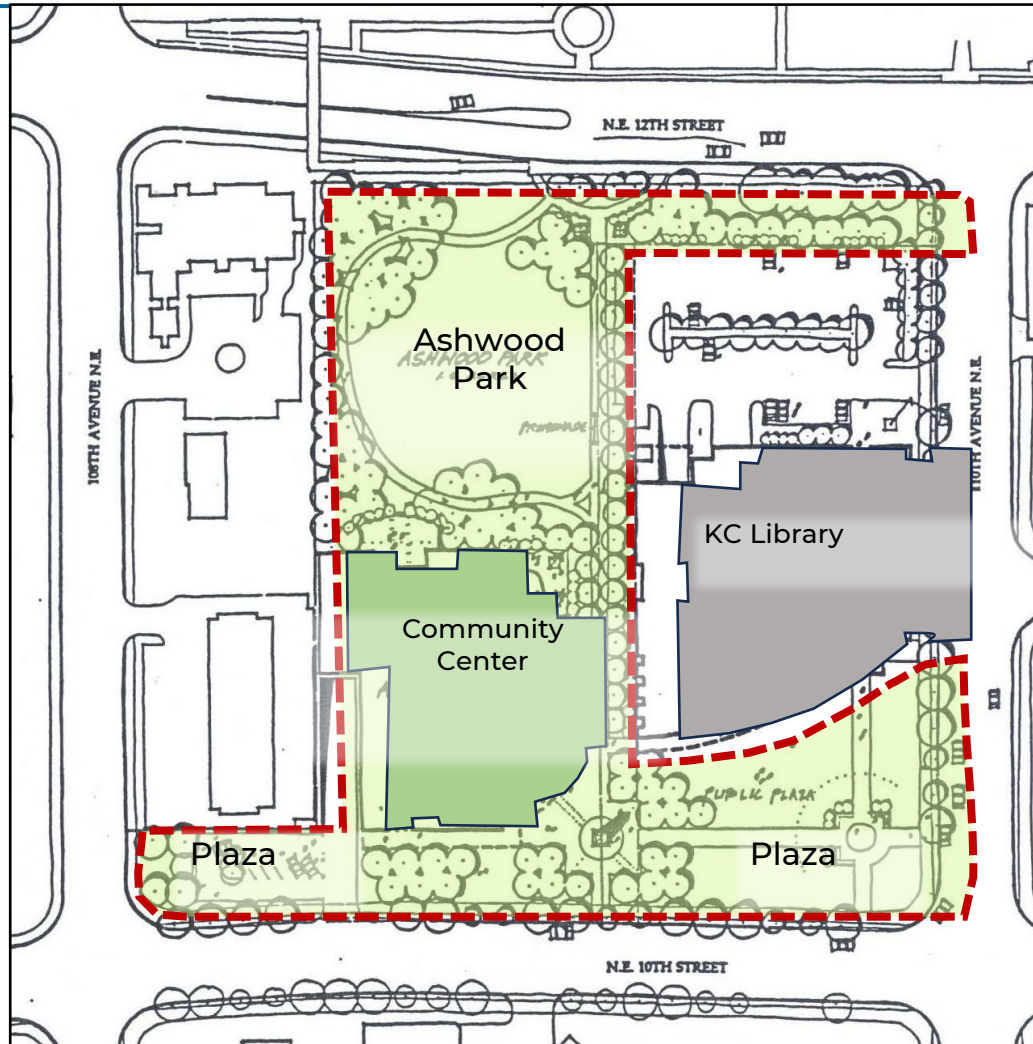
Background

Ashwood Park



2023 Aerial

1990 Conceptual Site Plan



1990 Adopted Site Plan



Community Engagement

Public Outreach

Goal and objectives

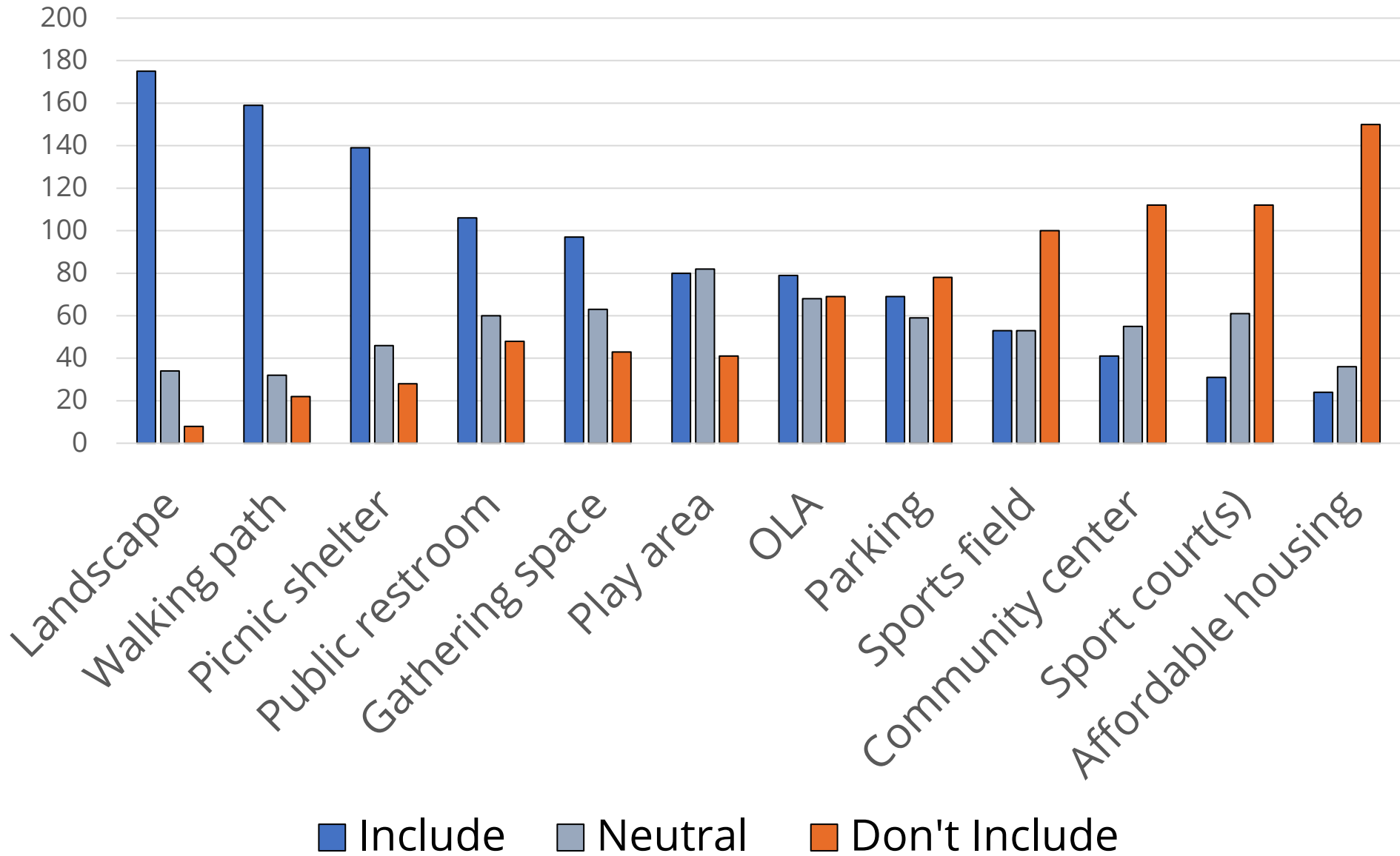
- Provide a range of opportunities for community input
- Generate broad reaching, cross cultural input
- Engage community stakeholders
- Keep public, Parks Board, and City Council informed
- Website: Bellevuewa.gov/ashwood-master-plan

Community Meetings

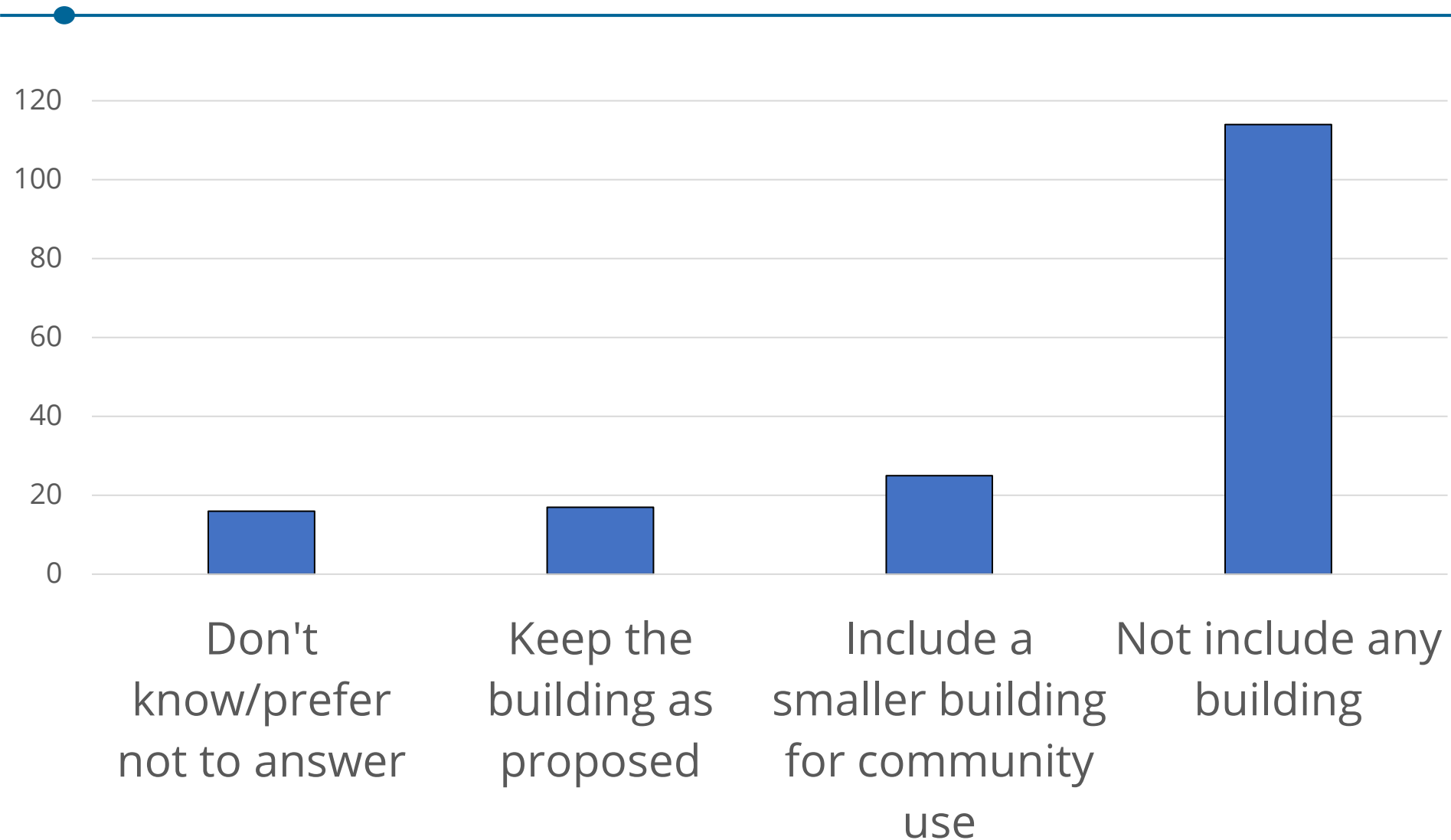


- Park Board Meeting – March 12, 2024
- Community Meeting - April 3, 2024
- Community Meeting – September 4, 2024

Park Elements



Should the updated master plan include a building?

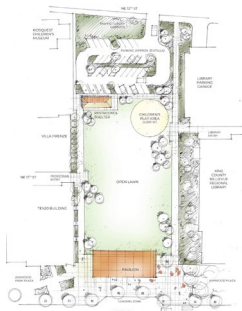
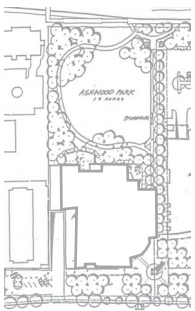


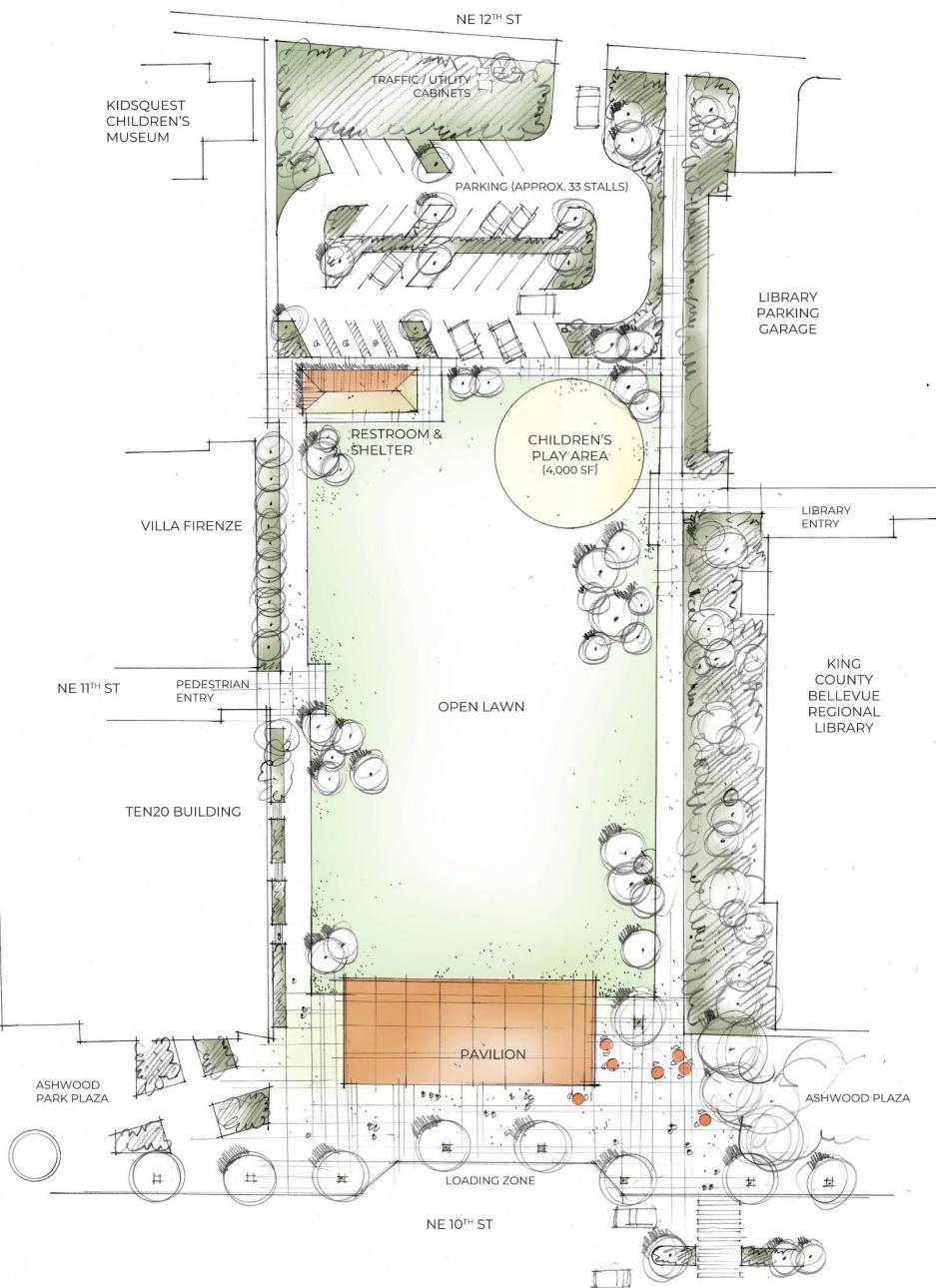


Conceptual Plan Alternatives

Concept Alternatives

- 1990 Master Plan
- Five Additional Plan Alternatives
 - Variability in balancing similar elements
 - Varying themes and characteristics



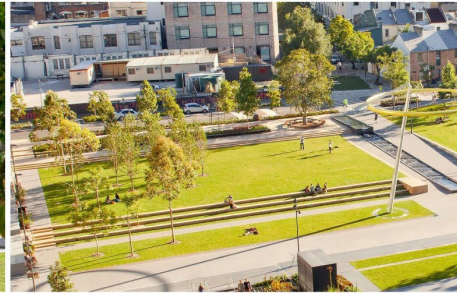
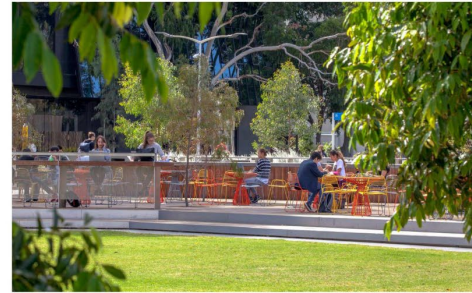


Play Area and Playful Site Furnishings



Pavilion

Restroom / Shelter

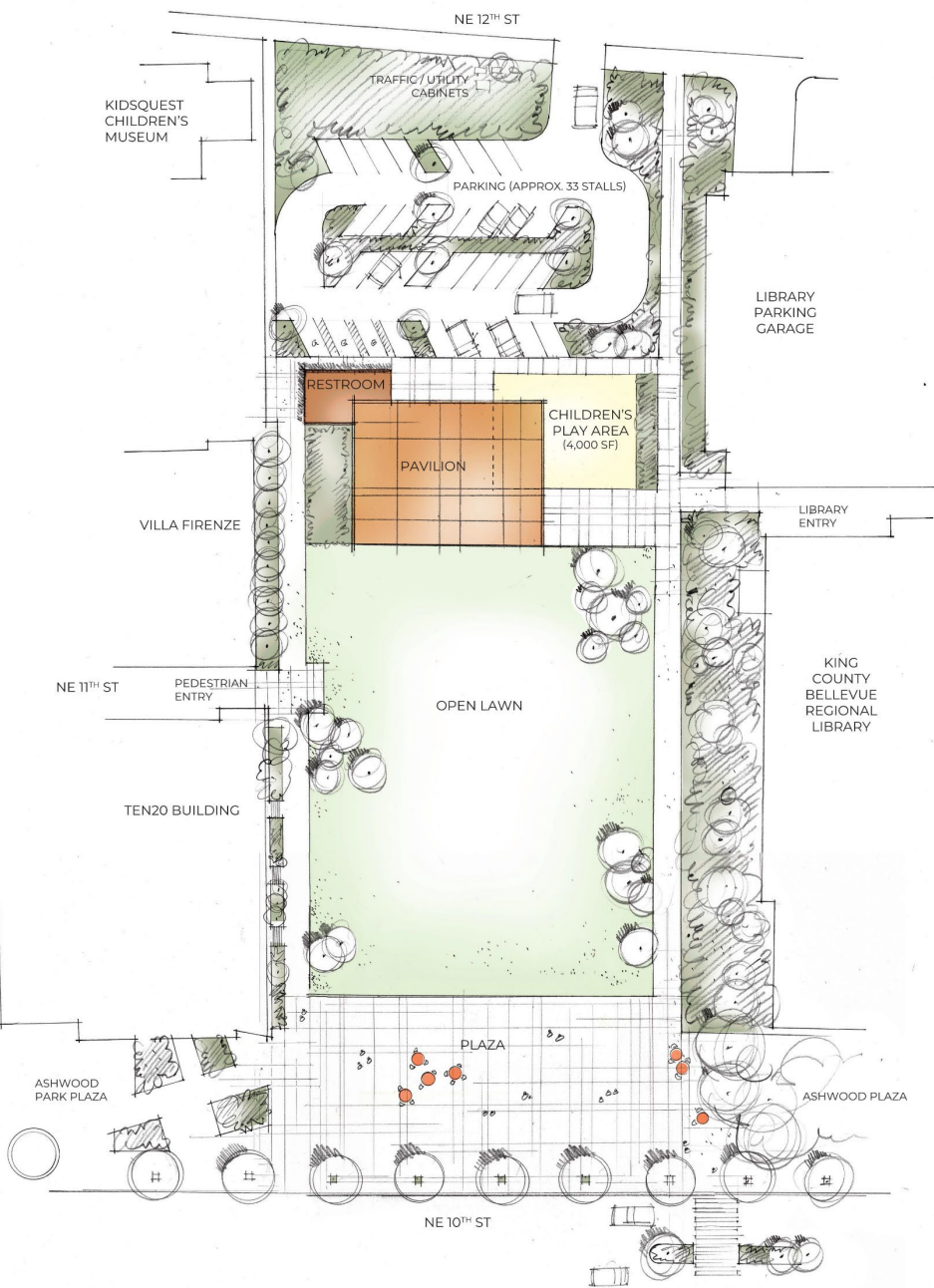


Open Lawn with Wide Perimeter Promenade and Plazas



Street Front Plaza

Precedent Images

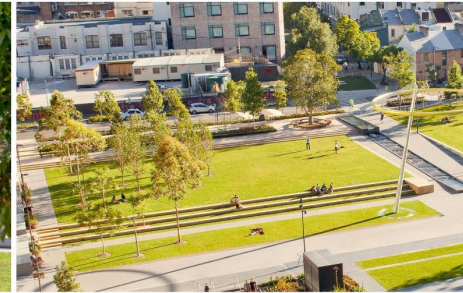
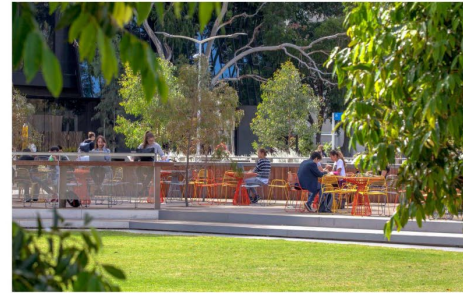


Play Area and Playful Site Furnishings



Pavilion

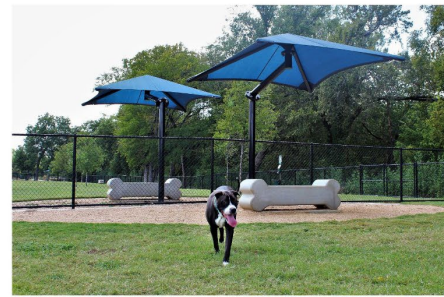
Restroom / Shelter



Open Lawn with Wide Perimeter Promenade and Plazas



Street Front Plaza



Off-Leash Area



Raingarden Planting



Restroom and Shelter



Play Area



Bocce Courts



Open Lawn and Amphitheater



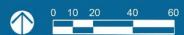
Street Front Plaza



Precedent Images

Active Theatre - Concept C
Ashwood Park Master Plan Update

Active Theater - Concept C
Ashwood Park Master Plan Update



Community Meeting #2



September 04, 2024
Community Meeting #2

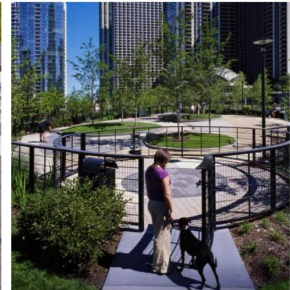
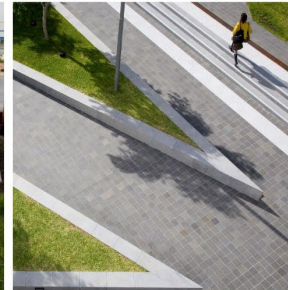




Art / Play



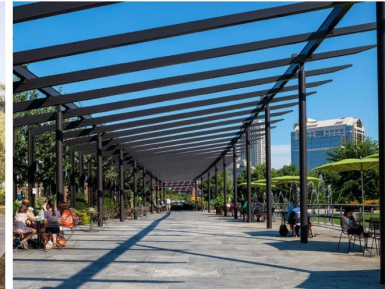
Perimeter Promenade and Plazas



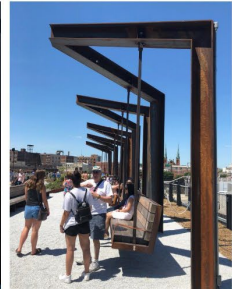
Off-Leash Area



Restroom



Pergola / Shelter



Seat / Swings



Plaza and Seating

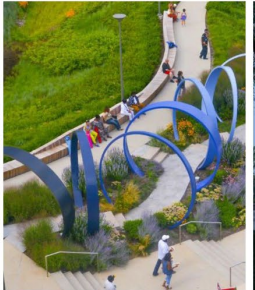




Art / Play



Off-Leash Area



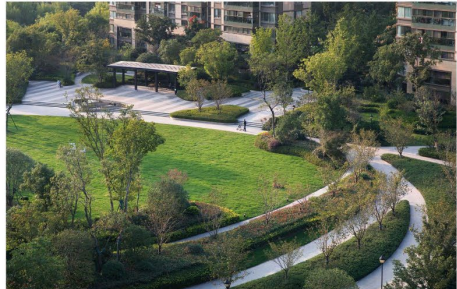
Gateway



Restroom



Pavilion / Shelter

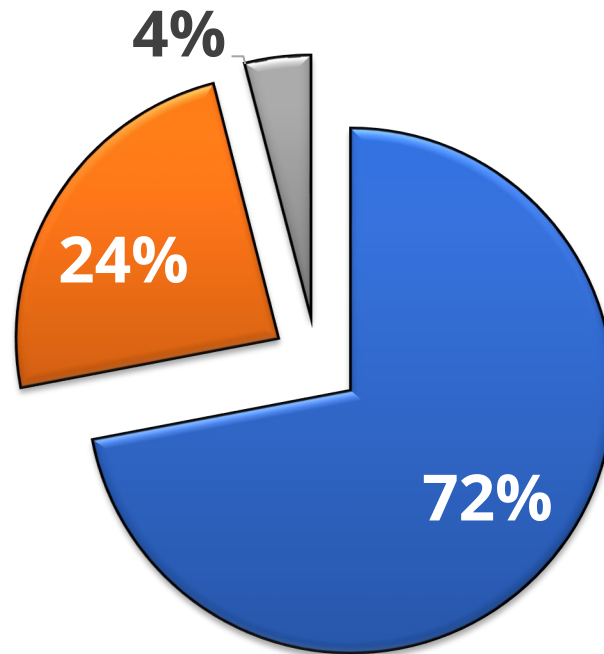


Street Front Plaza and Open Lawn



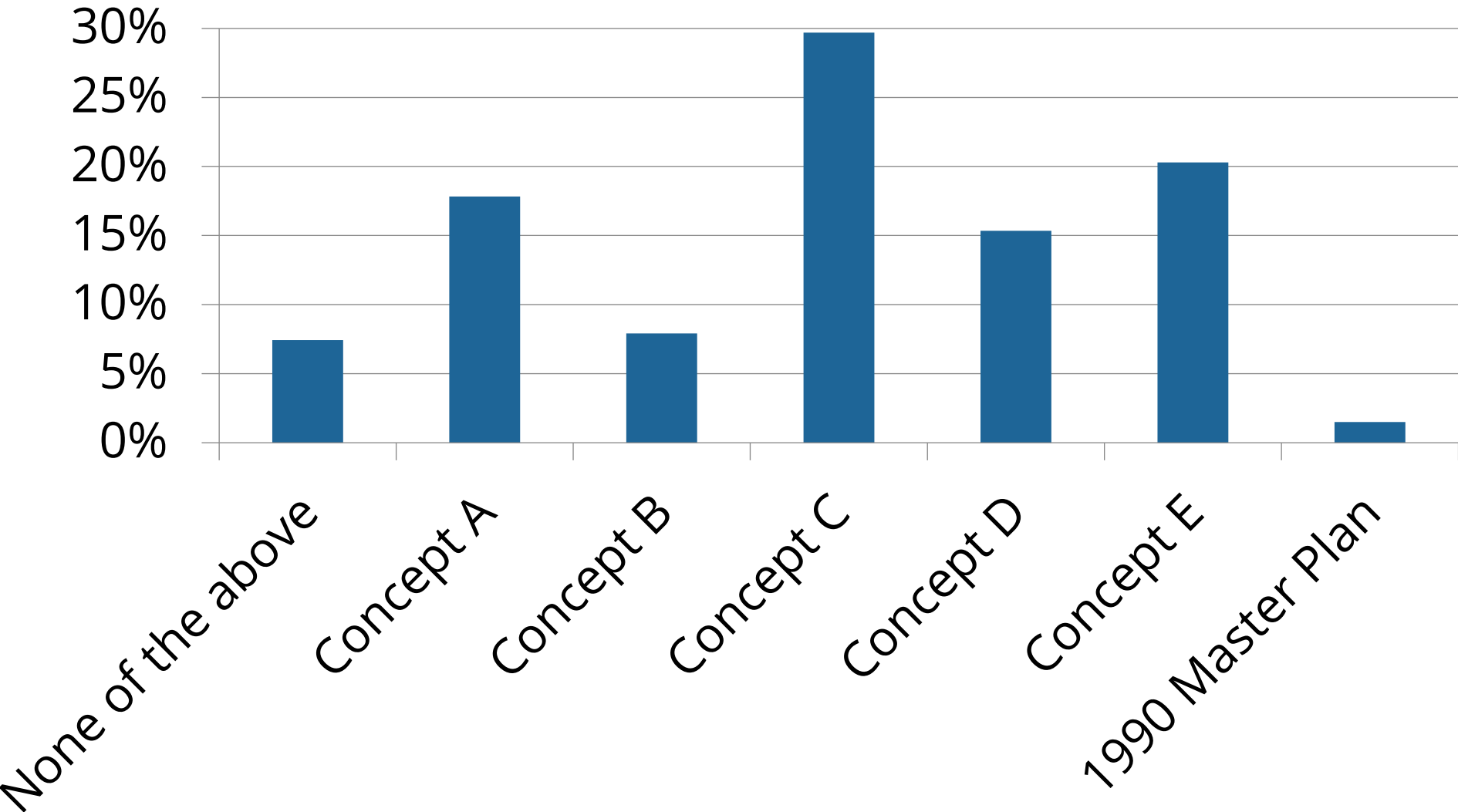
Design Balance

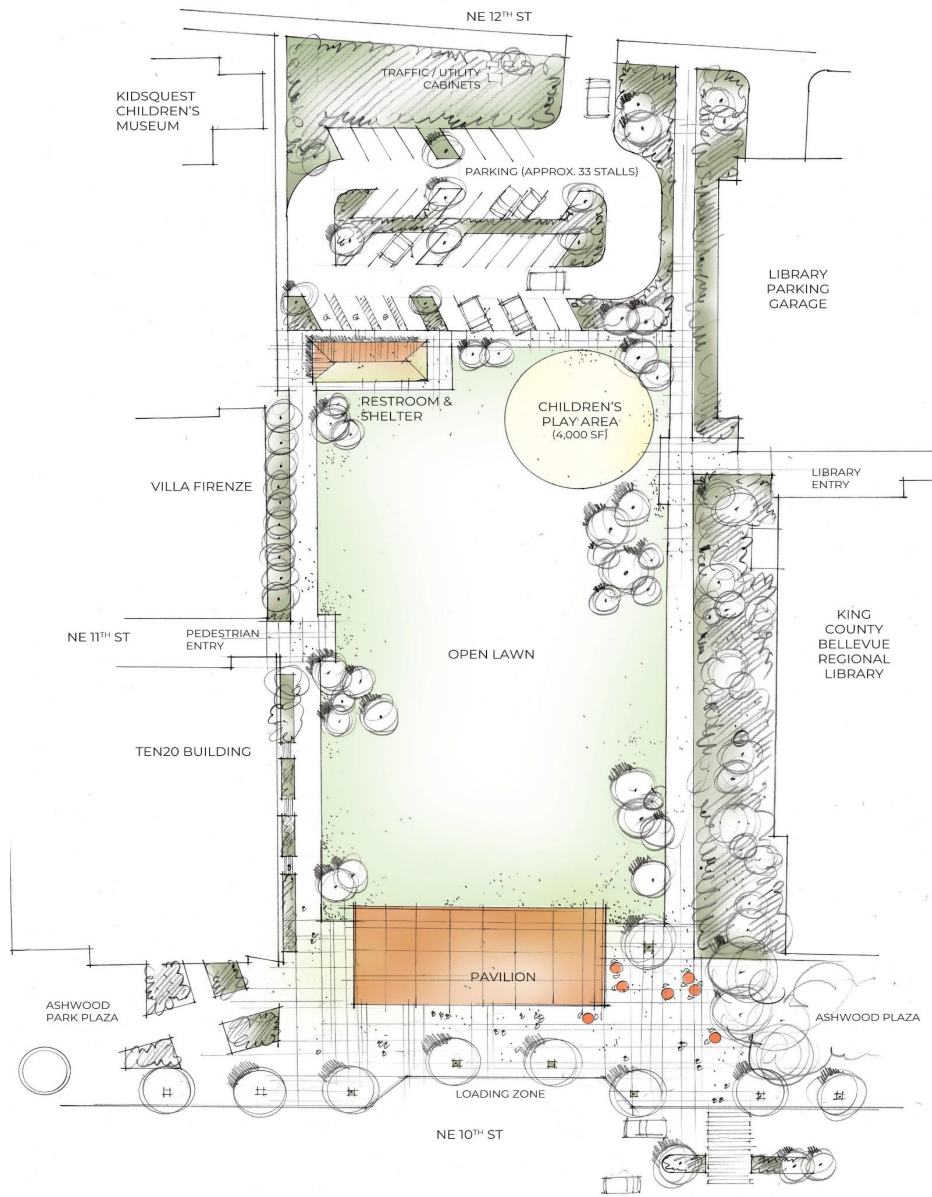
- 1) Have we found a good balance between open/green space and hardscape?
- 2) Have we found a good balance between park open/green space and park amenities?



■ Yes, a good balance ■ No - too many park amenities ■ No - too few park amenities

Which plan is closest to representing the type of park amenities you would like to see?

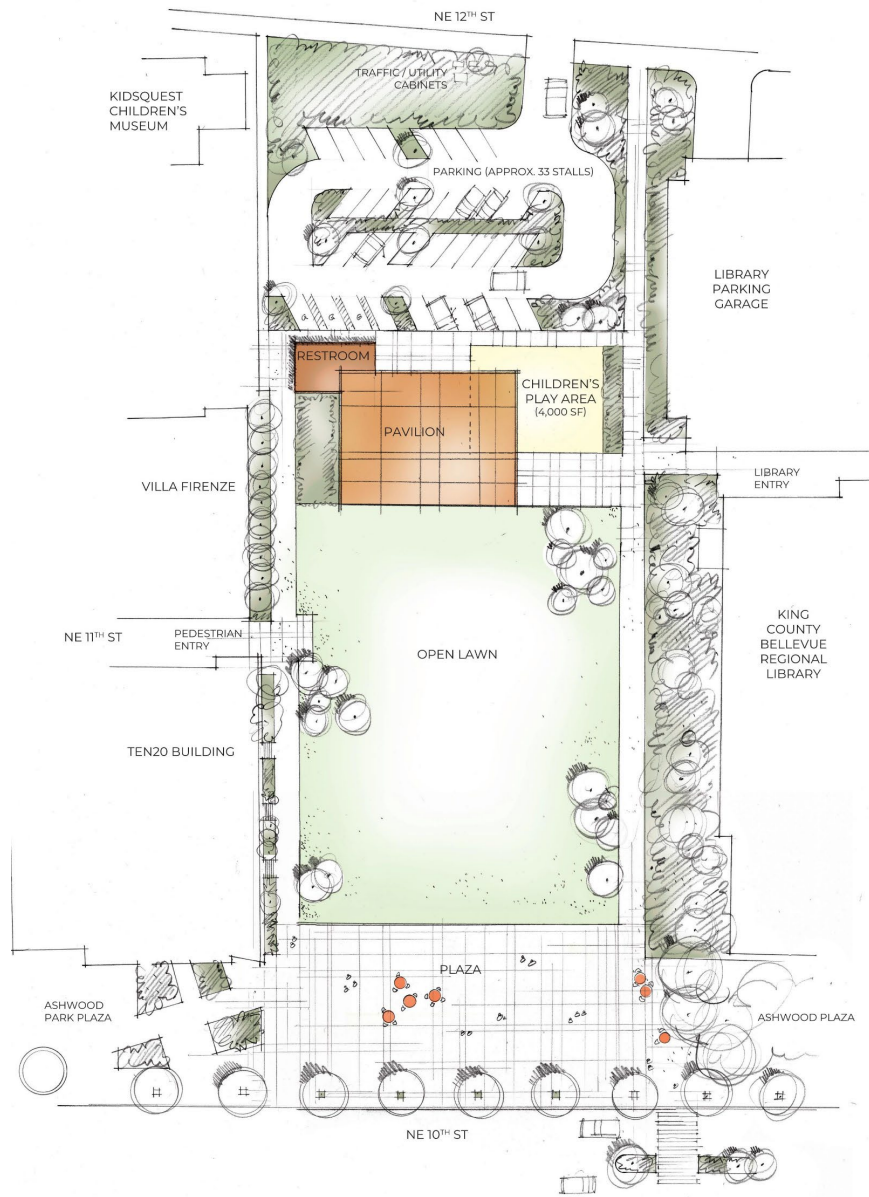




Grand Pavilion South - Concept A
 Ashwood Park Master Plan Update

0 10 20 40 60
 Community Meeting #2

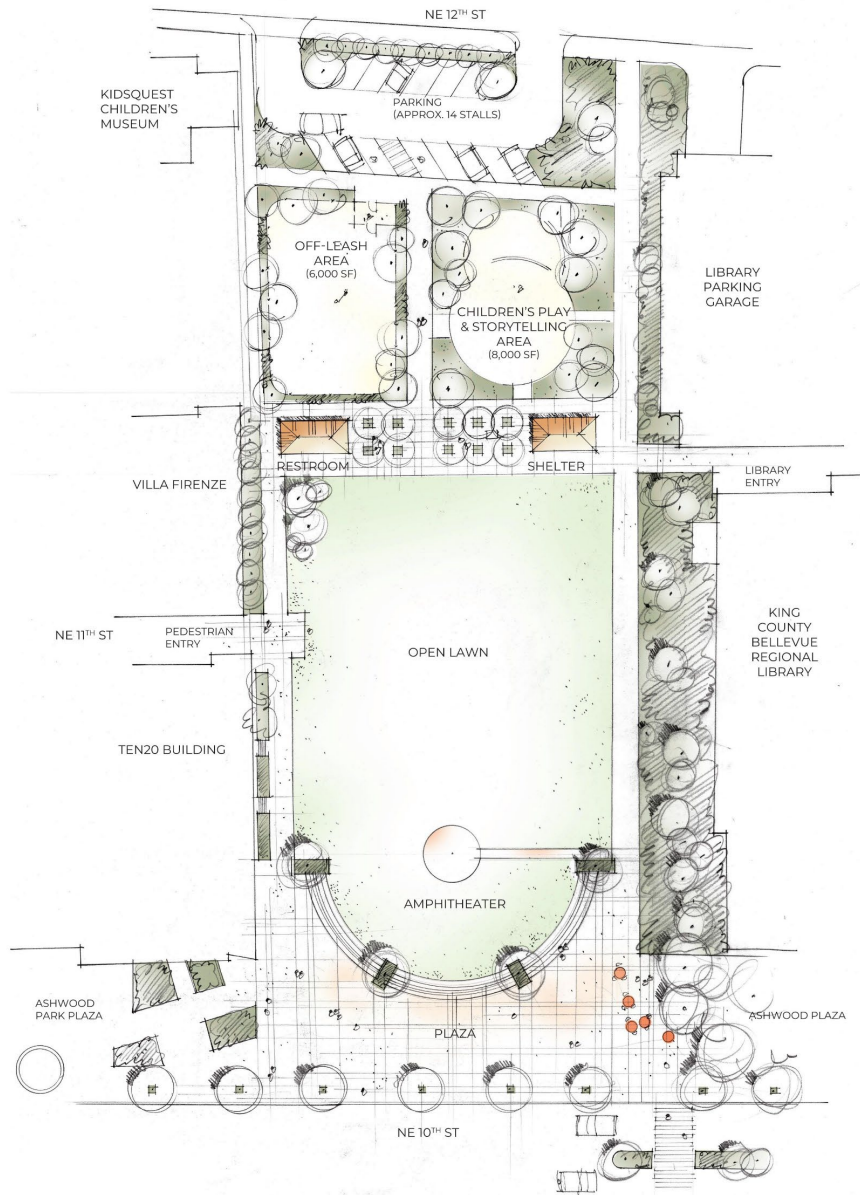




Grand Pavilion North - Concept B
 Ashwood Park Master Plan Update

0 10 20 40 60
 Community Meeting #2





Active Theater - Concept C
 Ashwood Park Master Plan Update

0 10 20 40 60

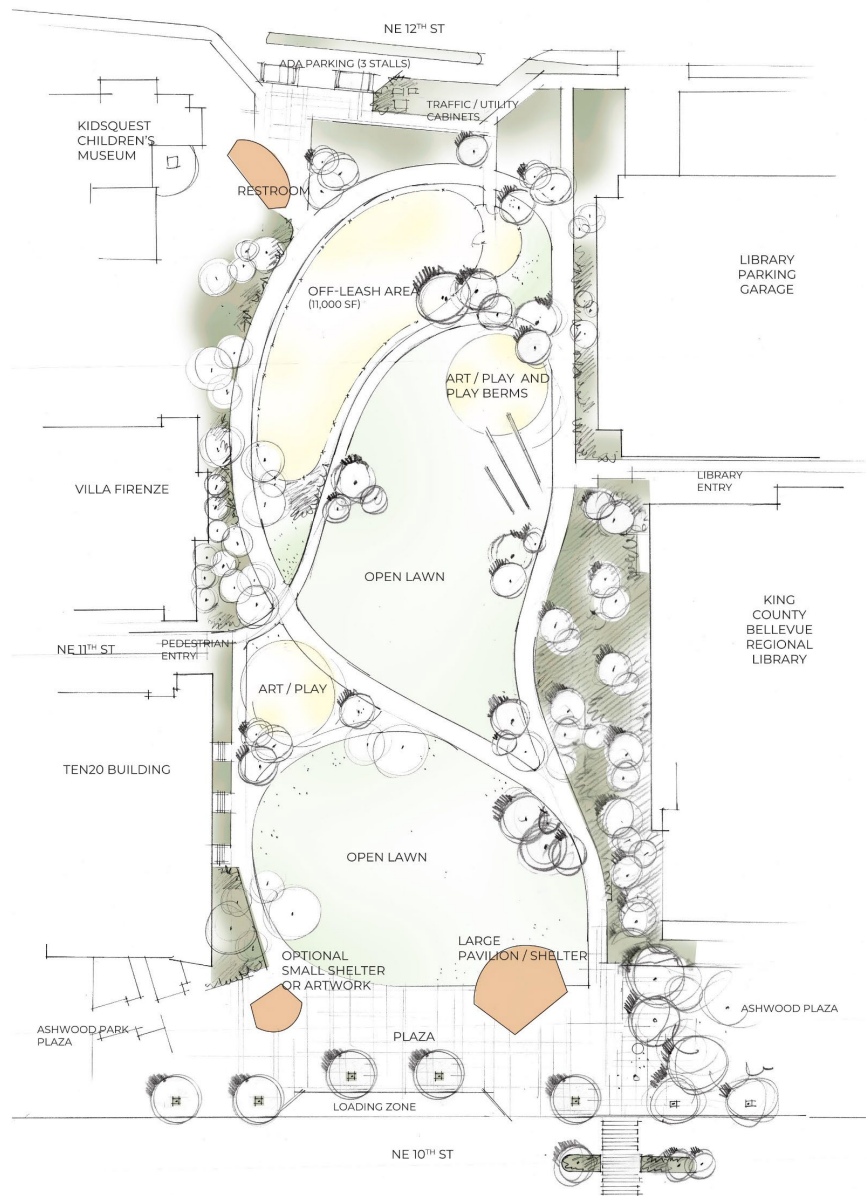
Community Meeting #2

MACLEOD-REOKORD



Playful Promenade - Concept D
 Ashwood Park Master Plan Update

0 10 20 40 60
 Community Meeting #2

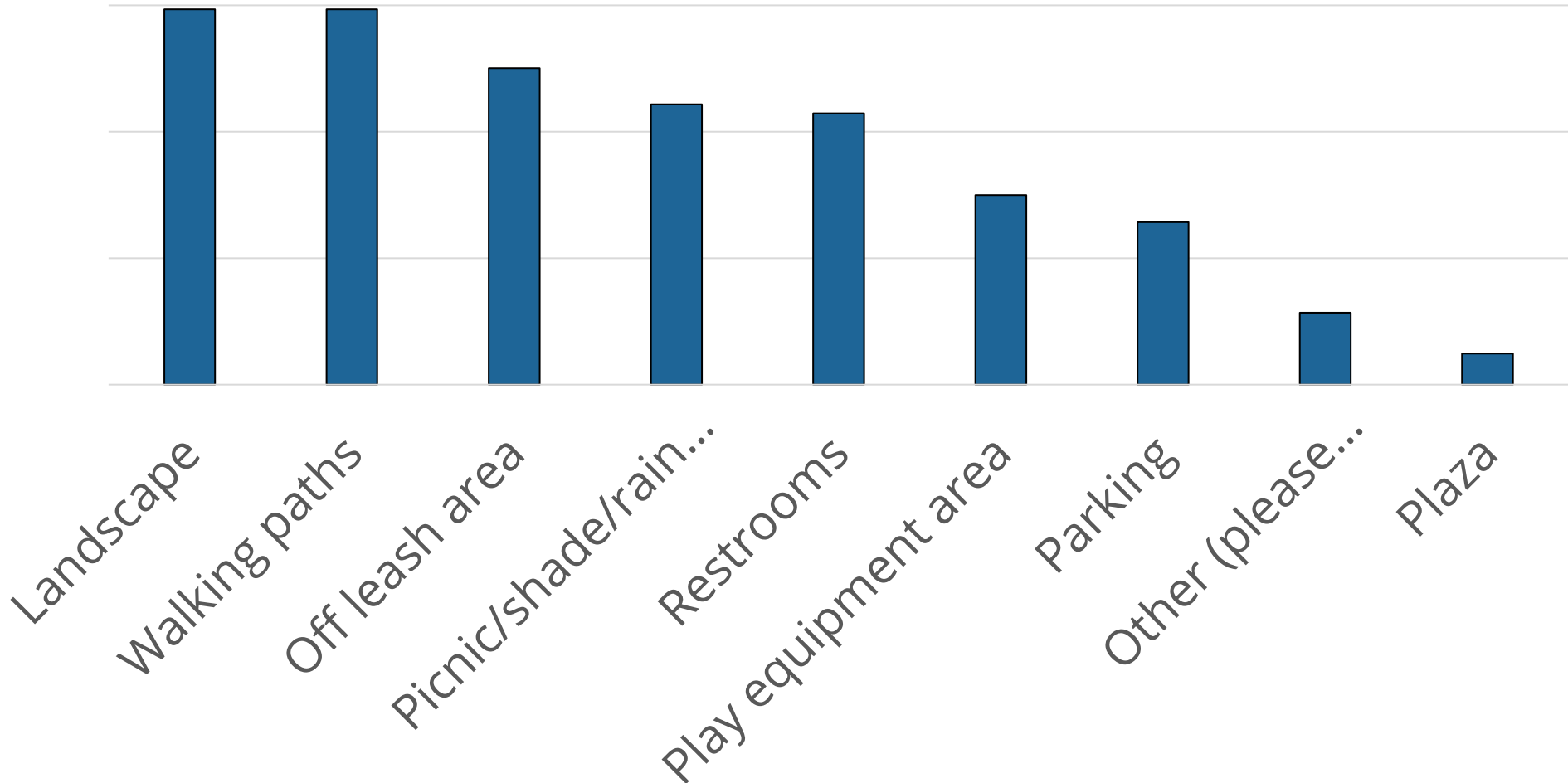


Art In The Park - Concept E
 Ashwood Park Master Plan Update

0 10 20 40 60
 Community Meeting #2

Preferred Park Amenities

Average Selection



Parks and Open Space System Plan needs

- Shelters/Pavilions/Pergolas
- Off-leash Areas



Timeline and Next Steps





Comments and Questions

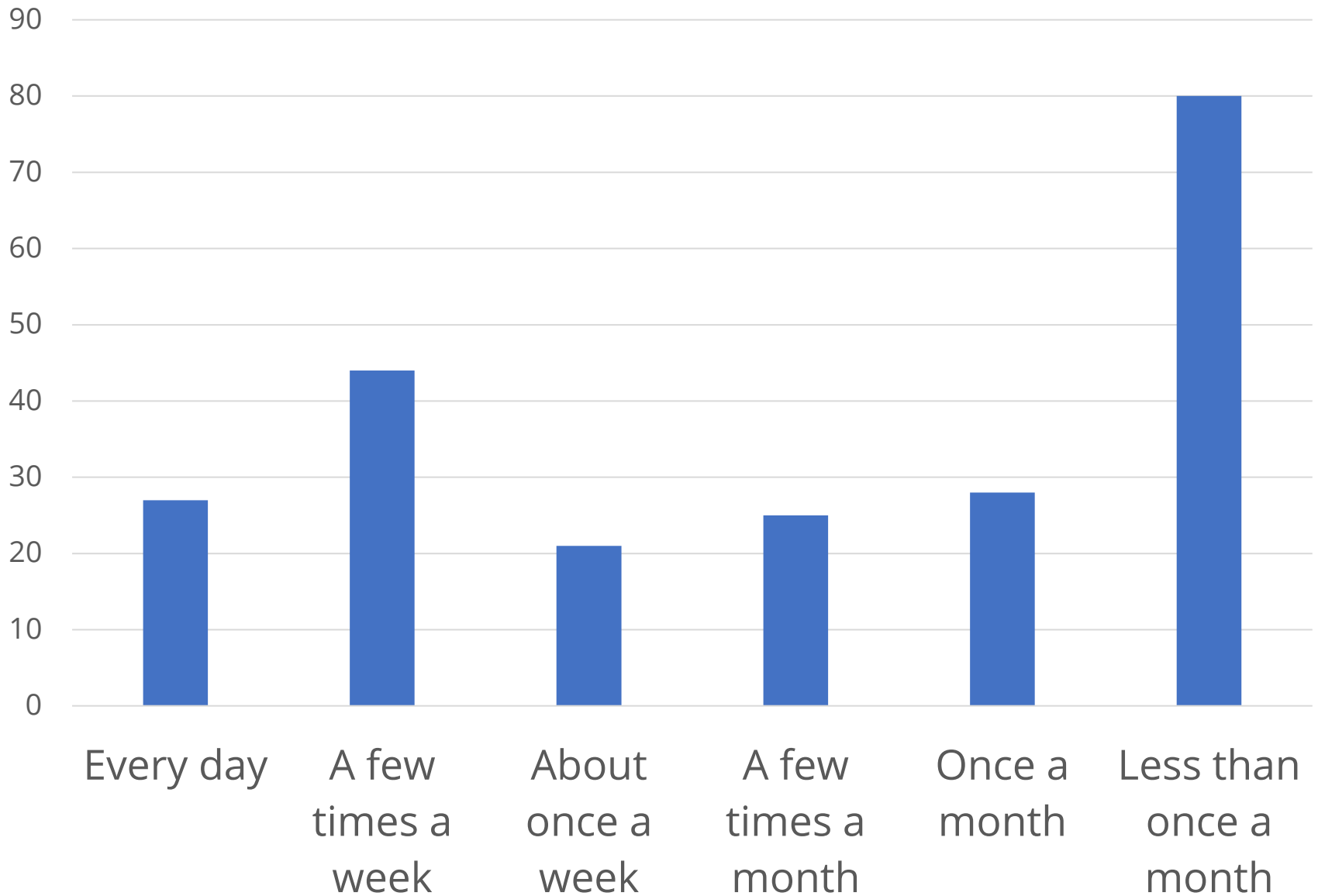


Initial Survey

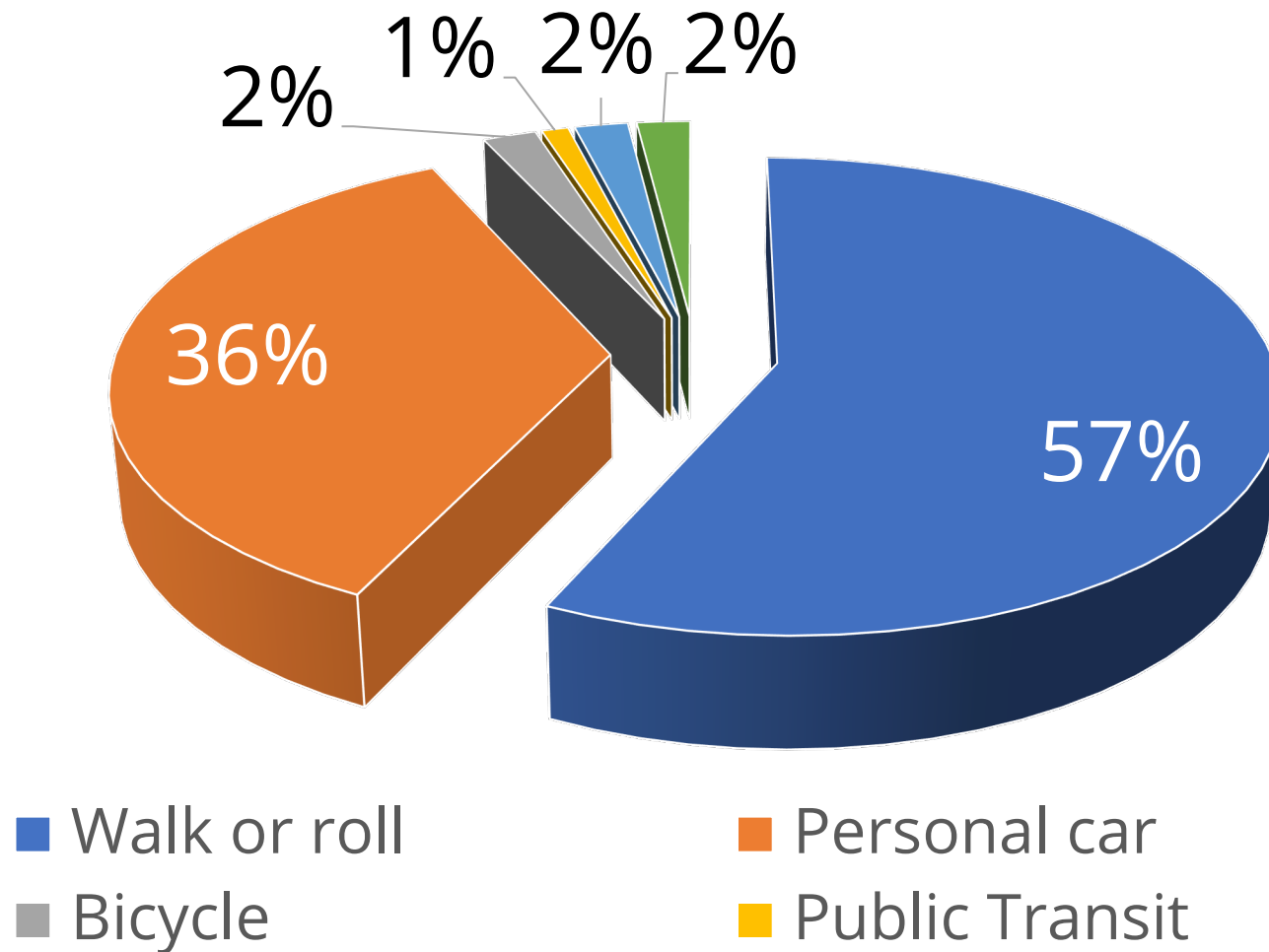
- Demographics of respondents:
 - 85% live in Bellevue
 - 14% work but do not live in Bellevue
 - 1% do not live or work in Bellevue

 - 40% from 18-44 years old
 - 34% from 45-64 years old
 - 21% 65 or older
 - 5% prefer not to answer

How often do you visit Ashwood Park?



Q4 How do you most often access Ashwood Park?



second Survey

- Demographics of respondents:
 - 96% live in Bellevue
 - 3% work but do not live in Bellevue
 - 1% do not live or work in Bellevue

 - 1% under 18
 - 27% from 18-44 years old
 - 20% from 45-64 years old
 - 44% 65 or older
 - 8% prefer not to answer