

Downtown Bellevue Demonstration Bikeway Project

City Council – February 5, 2018



BELLEVUE
**PEDESTRIAN
& BICYCLE**
IMPLEMENTATION INITIATIVE

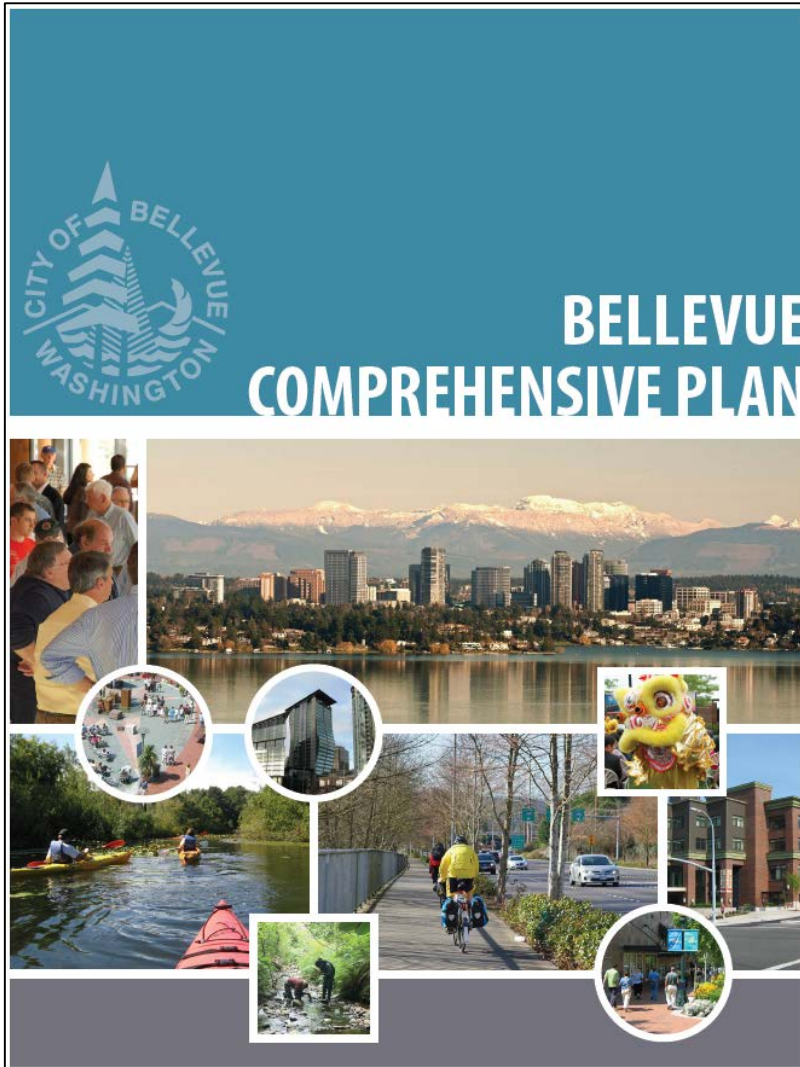
David Berg, Director
Franz Loewenherz, Principal Planner
Chris Long, Engineering Manager
Transportation Department

Lei Wu
Transportation Commissioner

Meeting Purpose

- **Update on implementation of a Downtown demonstration bikeway project.**
- **No Council Action is sought at this time.**

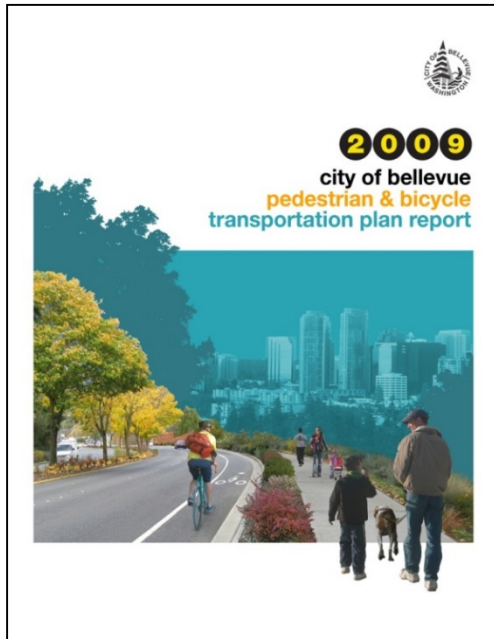
2015 Comprehensive Plan



“Building and maintaining a seamless network of walkways, bikeways, and off-street trails requires a coordinated effort that is documented in the Pedestrian and Bicycle Transportation Plan and the Pedestrian and Bicycle Implementation Initiative.”

- Transportation Element

2019 Target | Citywide Corridors



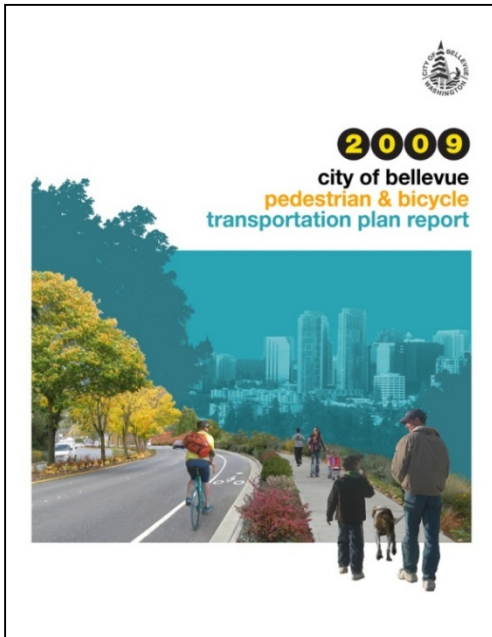
Ordinance No. 5861
(2/17/2009)



“Within 10 years, implement at least two completed, connected, and integrated north-south and at least two east-west bicycle routes that connects the boundaries of the city limits, and connects to the broader regional bicycle system.”

- 2009 Pedestrian & Bicycle Transportation Plan

2014 Target | Downtown Corridors



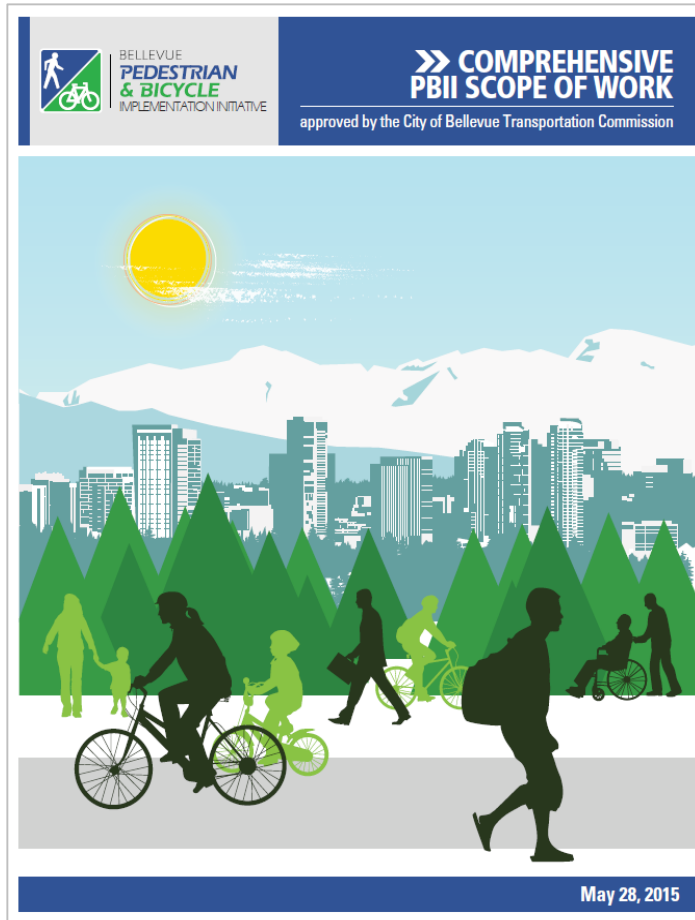
Ordinance No. 5861
(2/17/2009)



“Within 5 years, implement at least one completed and connected east-west and north-south bicycle route through Downtown Bellevue.”

- 2009 Pedestrian & Bicycle Transportation Plan

PBII Scope of Work



“Advances demonstration projects that test experimental facility design treatments.”

“Identifies early-win opportunities that can be implemented quickly to advance project delivery.”

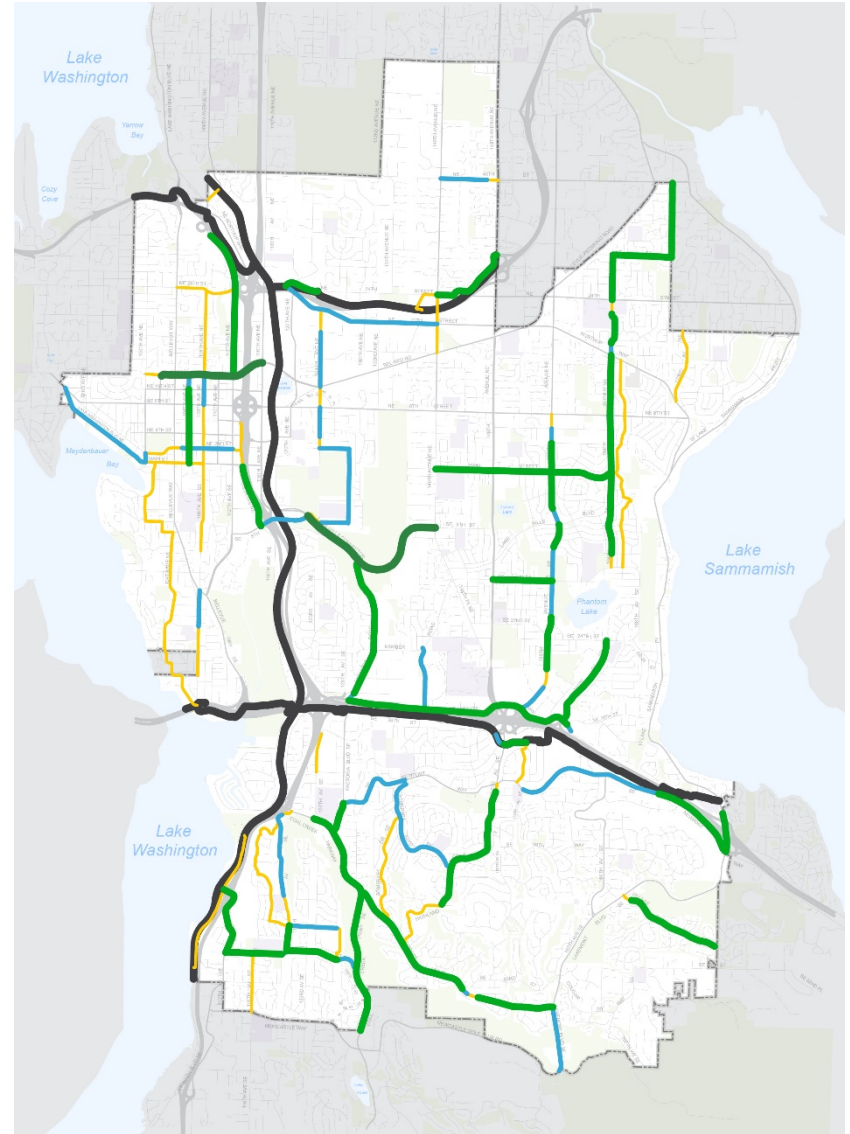
BRIP | Connected + Protected + Rapid

BICYCLE RAPID IMPLEMENTATION PROGRAM
project ideas and conceptual layouts

DRAFT



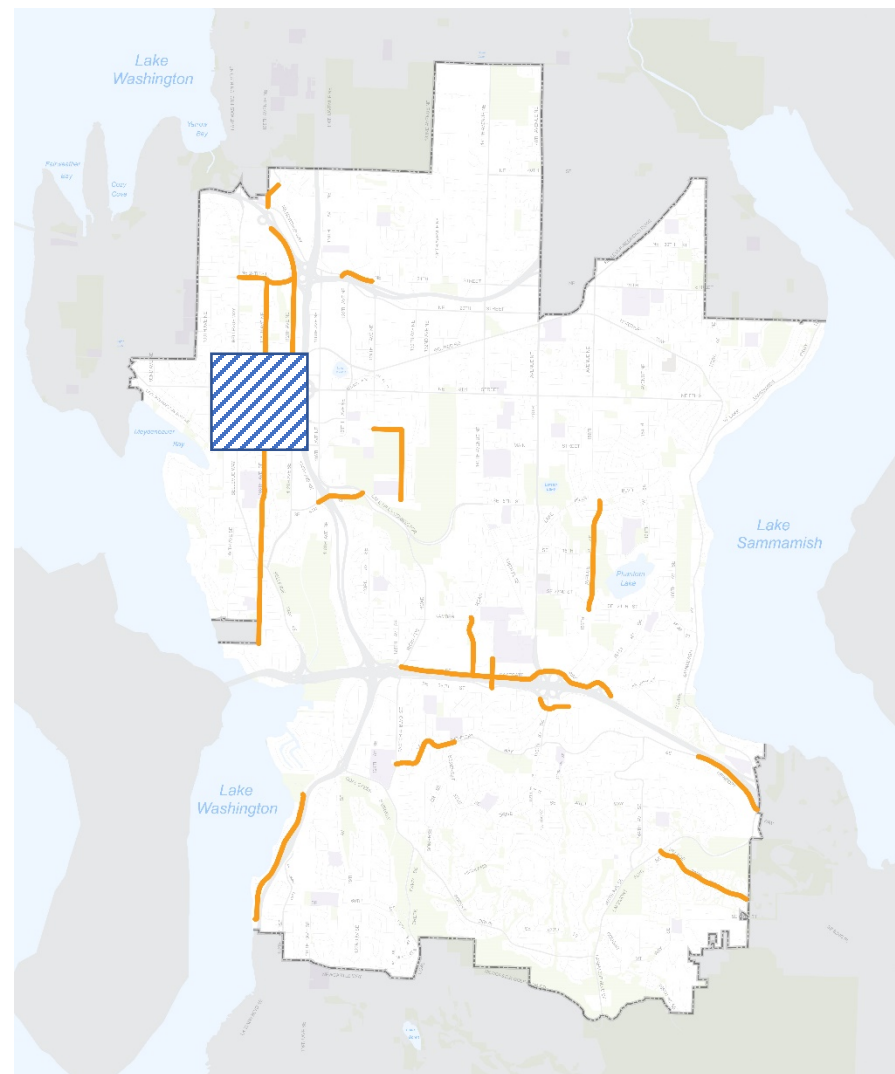
April 2016



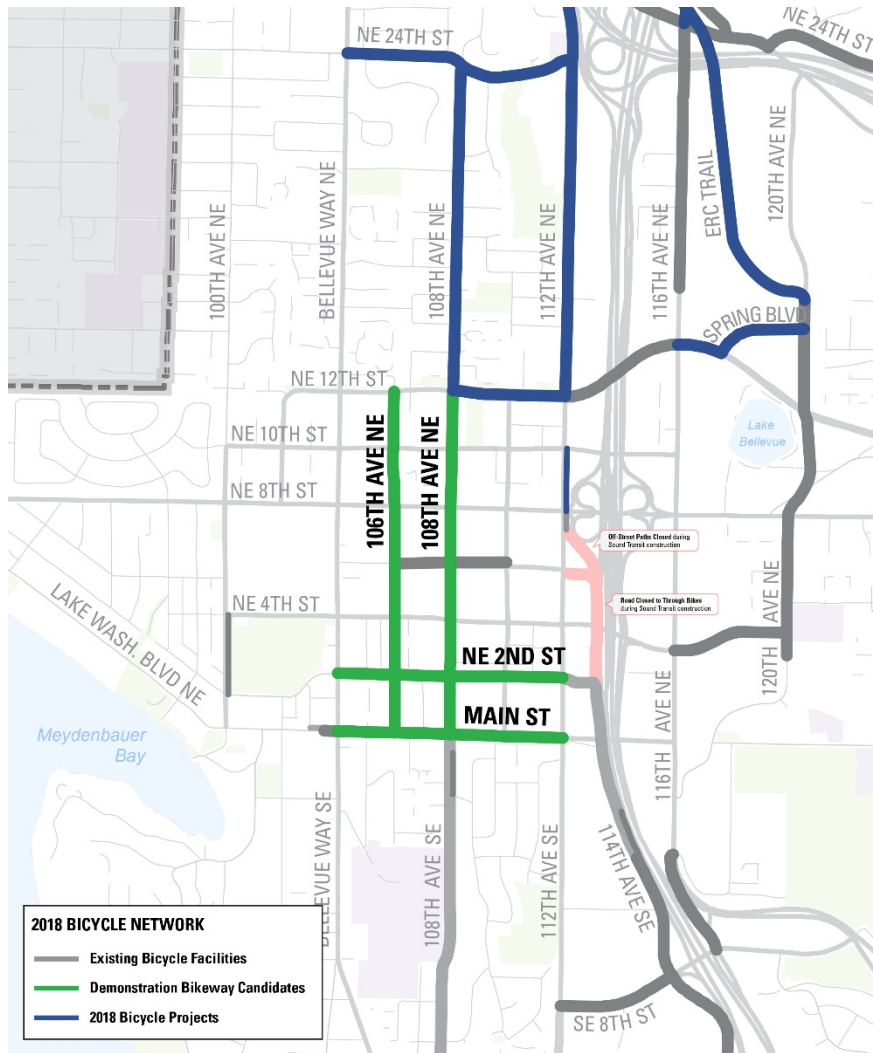
2017-2018 Bicycle Projects



In 2017-2018, the BRIP program will leverage roughly \$1.7M of funding from the Transportation Levy.



Downtown Bicycle Network Candidate Corridors



- **108th Ave NE**
Main St to NE 12th St
- **Main St**
105th Ave to 112th Ave
- **NE 2nd St**
Bellevue Way NE to 110th Ave NE
- **106th Ave NE**
Main St to NE 12th St

2017 BDA Consultation



BDA Transportation Committee conducted an internal review, discussion, and drove consensus on a recommendation.

BDA Evaluation Criteria

Safety

- Collisions (2010-2016)
- Wikimap Safety Issues

Bicycle Environment

- Existing Bike Network Connections
- Bike Facility Comfort
- Construction Activity

Auto Environment

- Travel Lanes Repurposed
- Turn Lanes Repurposed

Curbside Environment

- Changes to On-Street Parking
- Loading/Unloading

Transit Environment

- Bus Operations
- Transit Access

Outreach Activities



We want to hear from you!

The Transportation Department is working to make Downtown Bellevue a safe, comfortable, attractive place for people to bike.

We could install Downtown's first high-comfort bikeway as a pilot project in 2018. Help pick the street and design that balances the community's priorities.

Learn about the benefits and trade-offs of concepts along four candidate streets: 108th Ave NE, 106th Ave NE, Main St, NE 2nd St.

Attend the Open House:
Thursday / November 30 / 5-7 PM
Bellevue City Hall / 450 110th Ave NE

Take the Survey:
<http://www.surveymonkey.com/r/BvueBikeDemo>
Available through December 31

Information 425-452-6800
Available in Other Languages

For more information contact Franz Loewenherz at 425-452-4077 or flcwenherz@bellevuewa.gov

Postcard Mailer



"Pop-Up" Events

Downtown Demonstration Bikeway Project Survey

The Transportation Department is working to make Downtown Bellevue a safe and comfortable place for people to bike. The City Council invites a well-constructed network of bicycle facilities in Bellevue that enhance usability, support economic vitality, and serve the mobility needs of people of all ages and abilities. Investments in bicycle facilities will help make Downtown a more attractive and accessible place for people to live, work, and visit.

With this vision in mind, we are exploring the possibility of installing the first high-comfort bikeway in Downtown as a pilot project in 2018. Using feedback and observed feedback, the demonstration would provide a real-world opportunity to evaluate how the latest bikeway design concepts function in Bellevue. Four streets are candidates for the pilot project: 108th Ave NE, 106th Ave NE, Main St, and NE 2nd St.

We want your help to select the preferred street and develop a design that balances community priorities. Each candidate bikeway project offers its own set of benefits and challenges. We recognize that introducing a new bicycle facility on any of the candidate streets will involve tradeoffs.

The demonstration is expected to be in place for several months or more, from mid-2018 through at least December. A before-and-after study will be done to assess how the project affects travel for all road users. Outcomes will be monitored and adjustments could be made after installation as needed to improve operations. The pilot project will ultimately help inform how to invest in a network of downtown bicycle improvements in the future.

This survey should take about 10 minutes to complete. If you are interested in learning more about individual project concepts, you can choose to answer additional questions that should take about 10 additional minutes to complete.

Click "Next" below to get started! For more information about the potential demonstration bikeway project, visit the [Downtown Demonstration Bikeway webpage](#).

Next

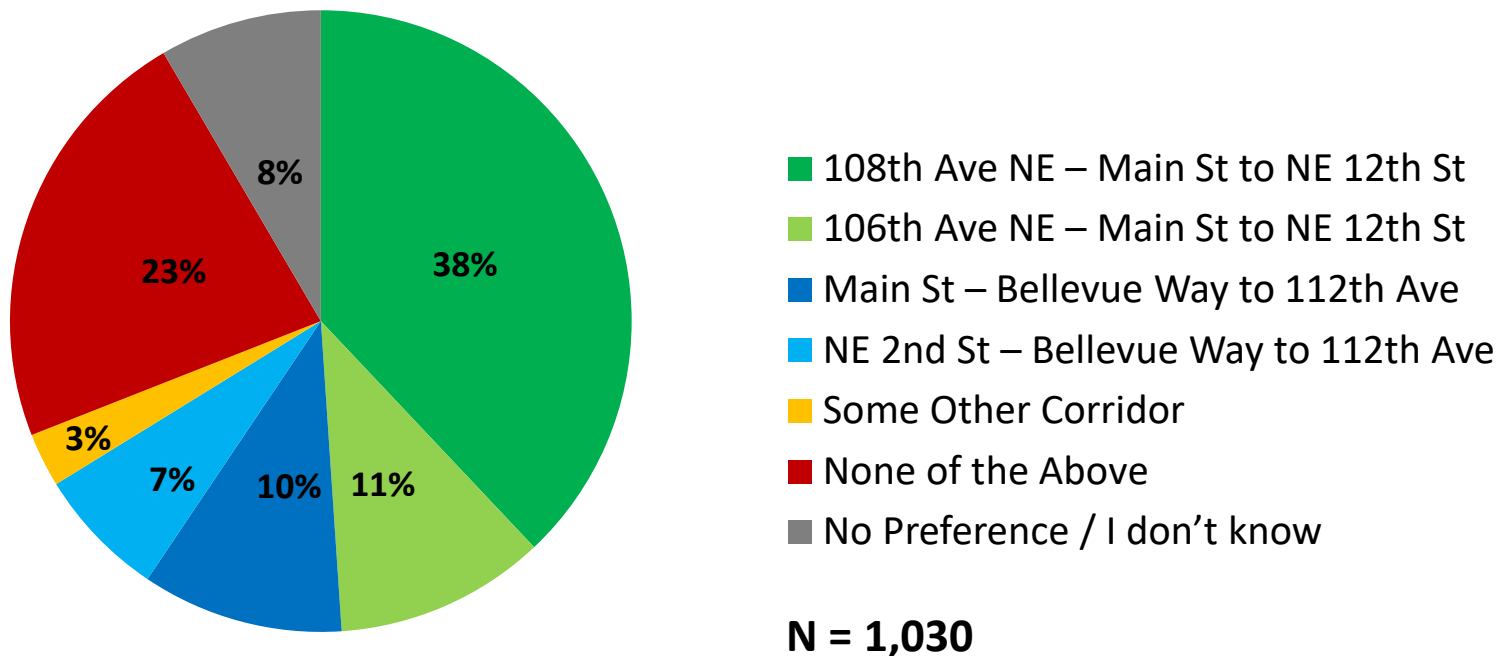
On-Line Survey



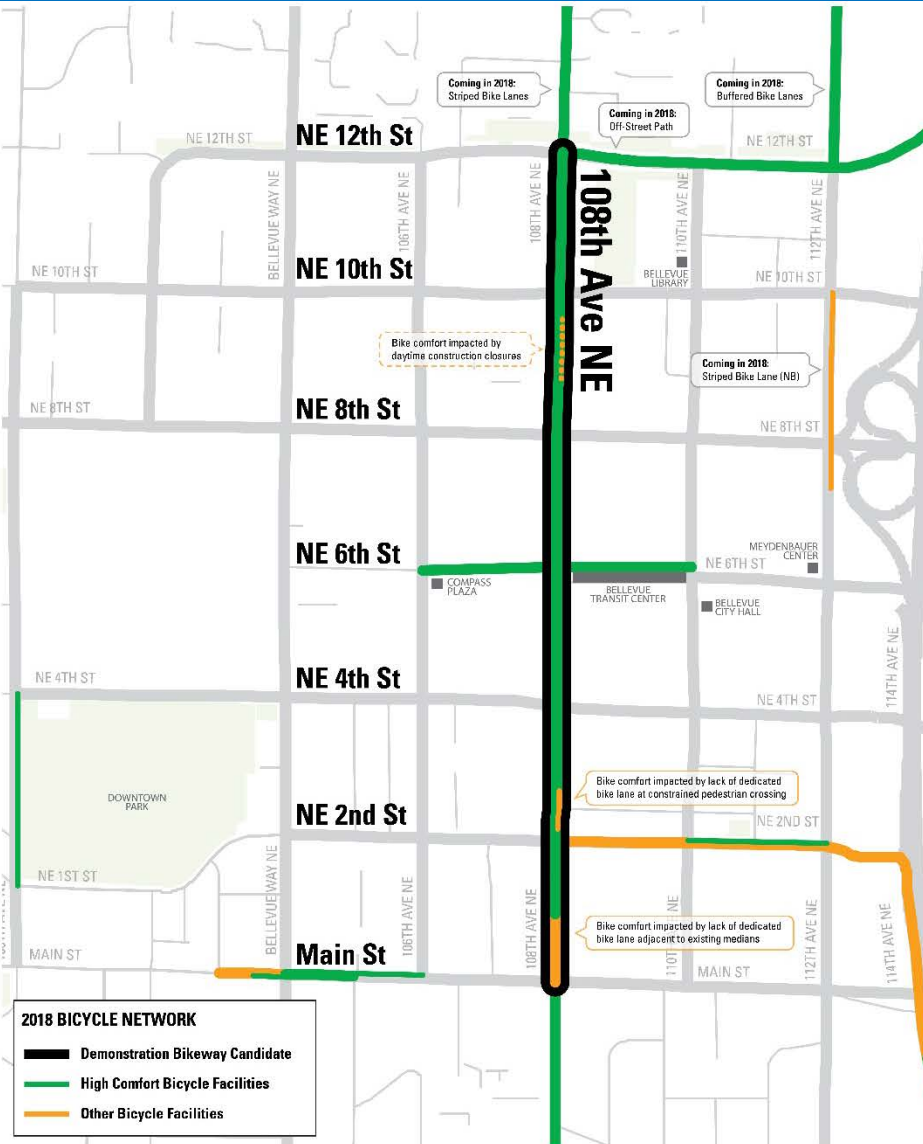
Open House

Downtown Demonstration Bikeway Survey

On which street would you prefer to see a demonstration bikeway installed in 2018?



108th Avenue NE (Main Street to NE 12th Street)



CONCEPT AT NE 6TH ST (BELLEVUE TRANSIT CENTER), LOOKING NORTH



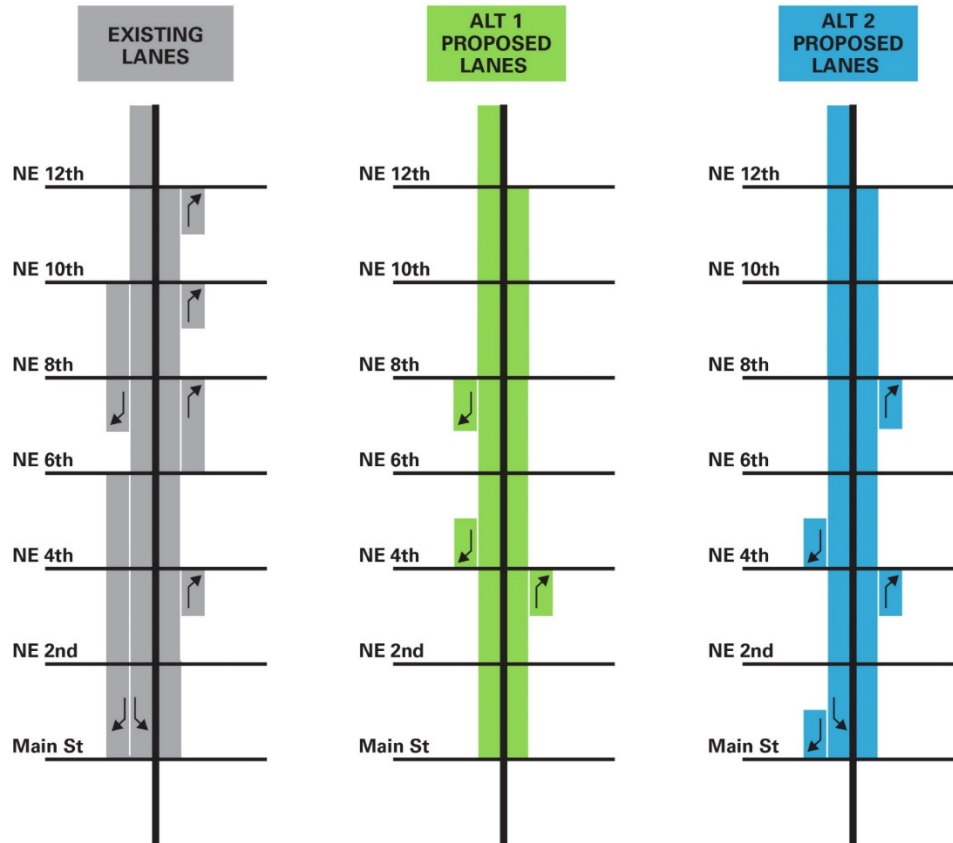
CONCEPT AT MAIN ST, LOOKING NORTH



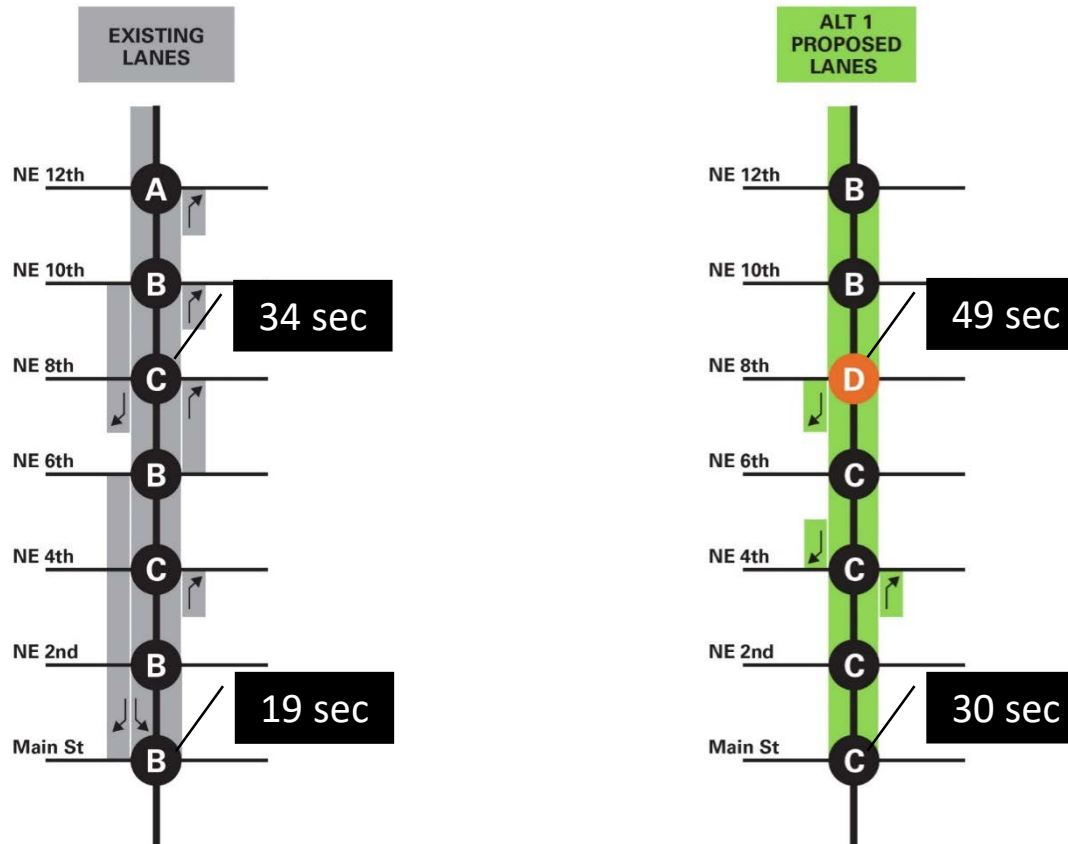
Business Support



108th Avenue NE | Design Options



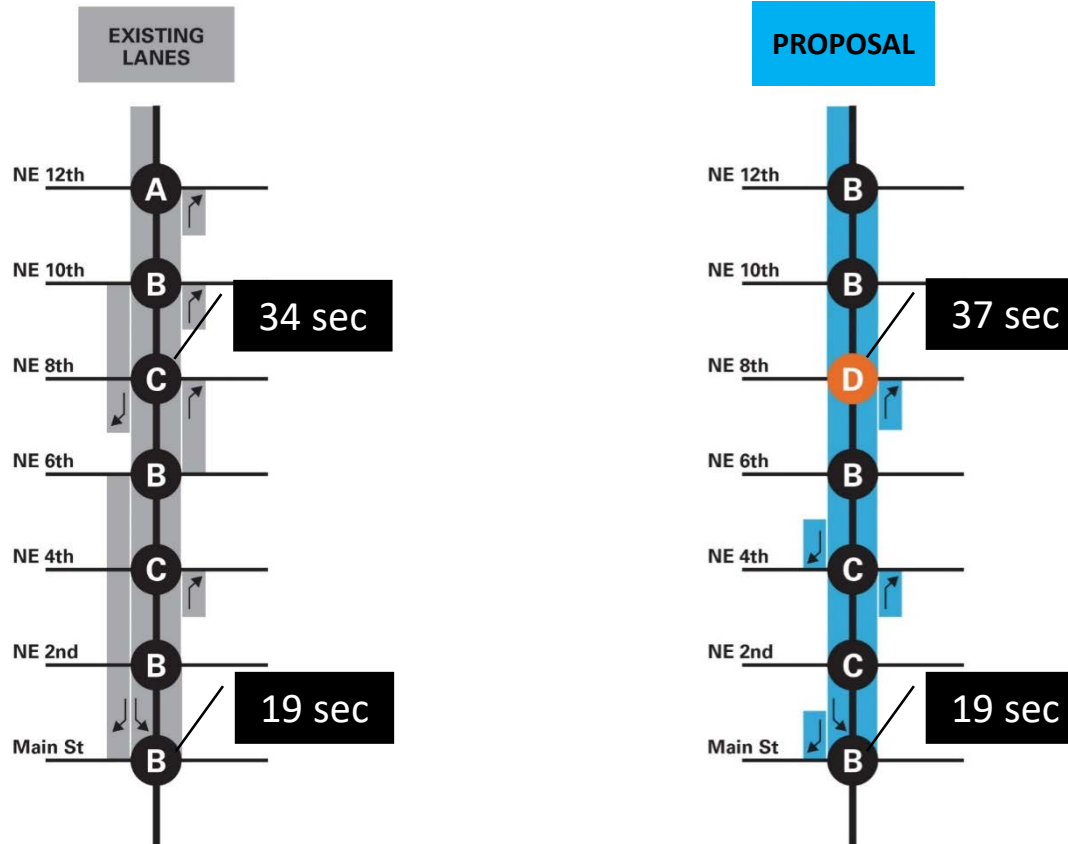
108th Avenue NE | Intersection LOS



Note: PM peak hour intersection level of service (seconds/vehicle).

Source: Synchro Simulation Model

108th Avenue NE | Intersection LOS



Note: PM peak hour intersection level of service (seconds/vehicle).

Source: Synchro Simulation Model

108th Avenue NE Demonstration Bikeway Project

On January 11 the Transportation Commission voted five in favor and two opposed in proceeding with implementing the downtown demonstration bikeway project.

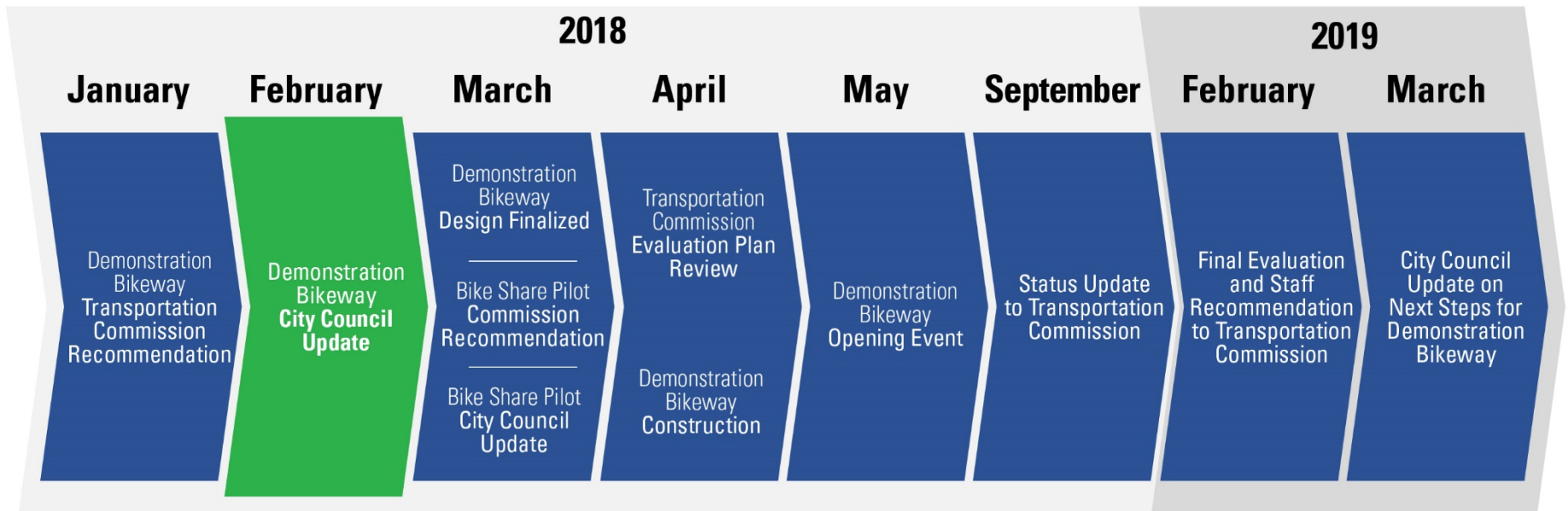


Citywide Bike Share Pilot Program

On March 8 the Transportation Commission will consider the implementation of a citywide bike share pilot program.



Project Timeline



For More Information



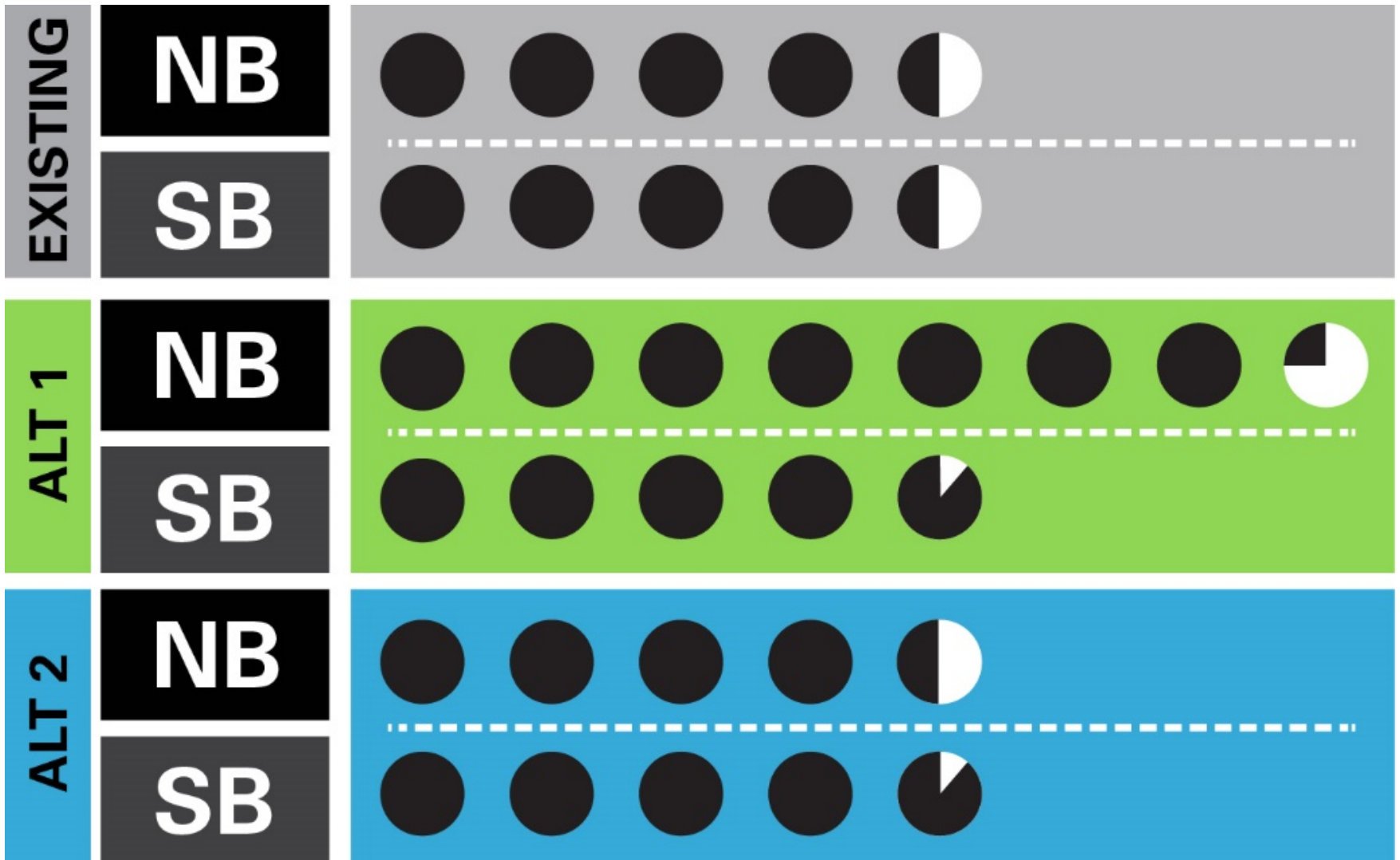
BELLEVUE
PEDESTRIAN
& BICYCLE
IMPLEMENTATION INITIATIVE

Franz Loewenherz

Transportation Department

floewenherz@bellevuewa.gov

425-452-4077



Note: PM peak hour average travel time from Main Street to NE 12th Street (minutes).

Source: Synchro Simulation Model