



2021 Annual Comprehensive Plan Amendments

Action to Adopt Ordinances

Emil King AICP, Thara Johnson,
Elizabeth de Regt AICP, Community Development

Kevin McDonald AICP, Transportation Planning

December 13, 2021



Direction Needed from Council

“...the City Council may approve, or approve with modifications an amendment to the Comprehensive Plan if Final Review Decision Criteria are met...”

- Adopt five Ordinances individually on each of the 2021 Annual Comprehensive Plan Amendments, then on the General Ordinance.

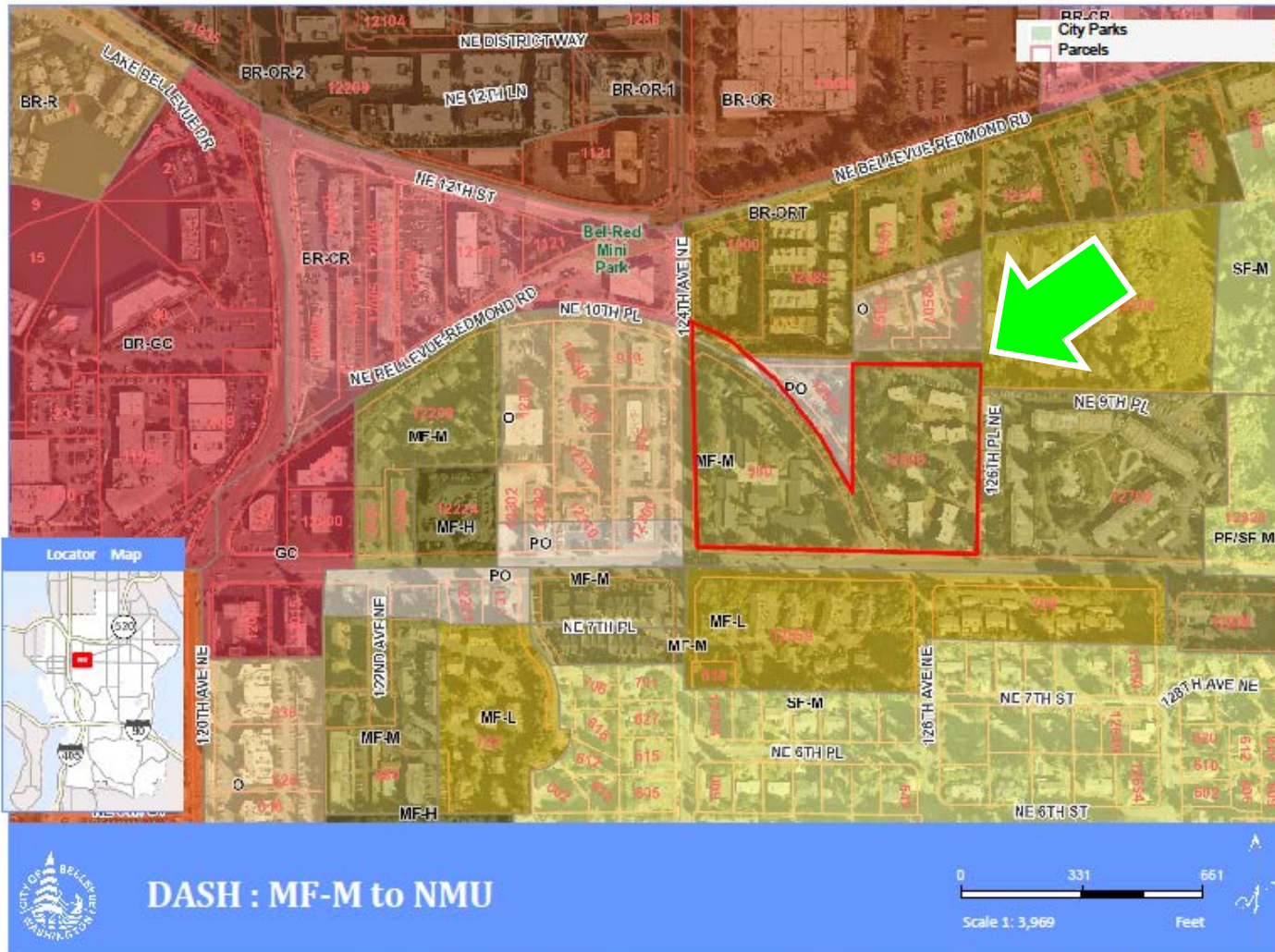




The Five 2021 Plan Amendments

	Comprehensive Plan Amendment	Included Amendments	Council Direction
1	DASH Glendale and Evergreen Court <u>20-114270 AC</u> <i>Wilburton / NE 8th Street</i>	<ul style="list-style-type: none"> Map amendments on two parcels totaling 7.5 acres from Multifamily-Medium (MF-M) to Neighborhood Mixed Use (NMU). 	Ord. No. 6631 to Approve
2	Transportation Project List <u>21-107724 AC</u> <i>Citywide</i>	<ul style="list-style-type: none"> Repeal the Comprehensive Transportation Project List (CTPL) from the Comprehensive Plan. 	Ord. No. 6632 to Approve
3	Multimodal Policies <u>21-107724 AC</u> <i>Citywide</i>	<ul style="list-style-type: none"> Amend the Transportation Element to embed a multimodal approach to transportation concurrency. 	Ord. No. 6633 to Approve
4	Northeast Bellevue Neighborhood Area Plan <u>21-100173-AC</u>	<ul style="list-style-type: none"> Replace Volume 2 Northeast Bellevue narrative and policies with new narrative and policies. Amend Northeast Bellevue land use map to new borders. Amend borders for adjoining (Crossroads and Southeast Bellevue) Neighborhood Areas. 	Ord. No. 6634 to Approve w/ Proposed Amendments in Packet
5	Northwest Bellevue Neighborhood Area Plan <u>21-100174-AC</u>	<ul style="list-style-type: none"> Rename Volume 2 North Bellevue Subarea Plan to Northwest Bellevue Neighborhood Area Plan. Replace Volume 2 North Bellevue narrative and policies with new Northwest Bellevue narrative and policies. 	Ord. No. 6635 to Approve w/ Proposed Amendments in Packet

DASH Glendale and Evergreen Court: Ordinance No. 6631



Comprehensive
Plan Map
amendment from
**Multifamily
Medium (MF-M)**
to **Neighborhood
Mixed Use (NMU)**



DASH : MF-M to NMU





Direction Needed from Council

- Adopt Ordinance No. 6631 on the DASH Glendale and Evergreen Court amendment.

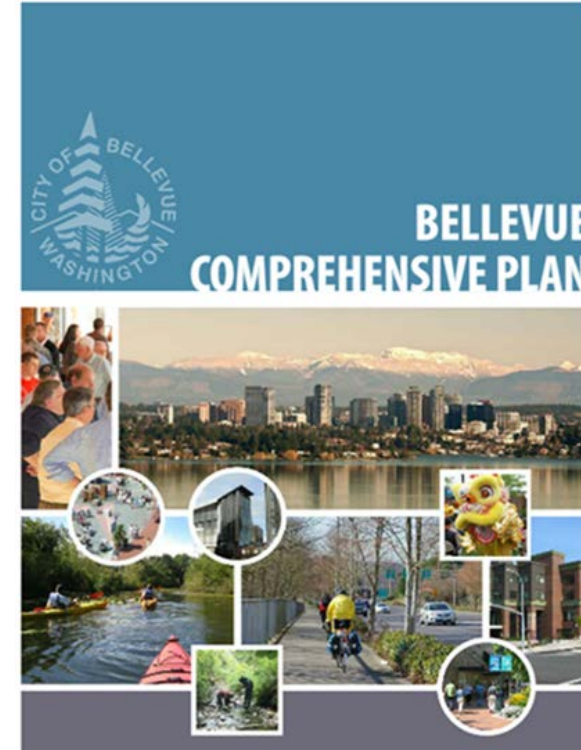


Transportation Project List: Ordinance No. 6632



Repeal the Comprehensive Transportation Project List (CTPL) from the Comprehensive Plan

- Transportation Improvement Program will be the inventory of planned transportation projects





Direction Needed from Council

- Adopt Ordinance No. 6632 on the Comprehensive Transportation Project List (CTPL) amendment.

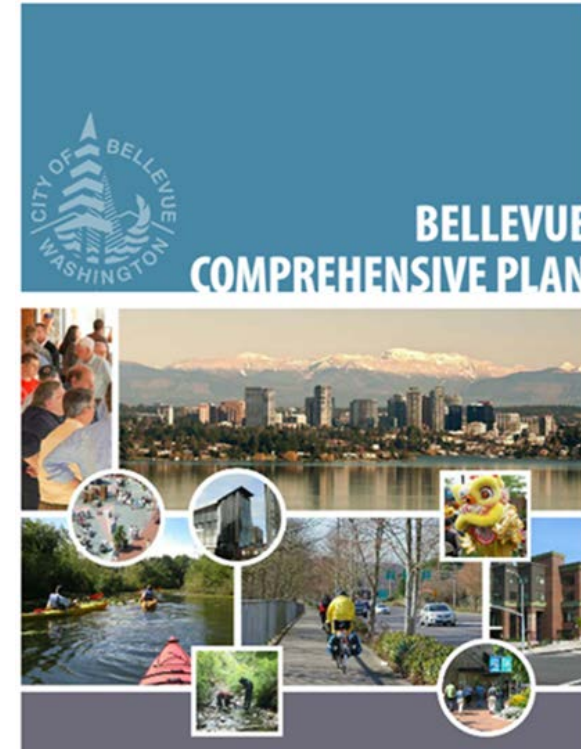


Multimodal Policies: Ordinance No. 6633



Embed multimodal concurrency policy in the Transportation Element

- Repeal or amend existing policies related to transportation concurrency, add one goal, add two new policies, and amend “narrative”
- TR-2: Improve the multimodal transportation system and strive to manage congestion and improve the quality of the travel experience for all users.





Direction Needed from Council

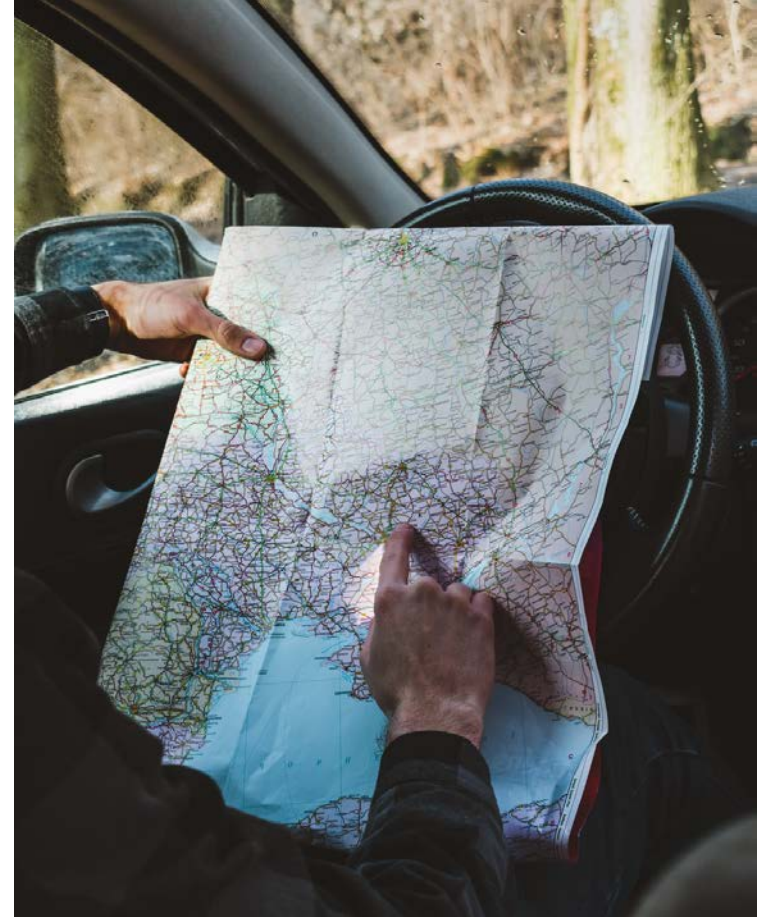
- Adopt Ordinance No. 6633 on the Multimodal Concurrency Policy amendment in the Transportation Element.



Neighborhood Area Planning

Ordinance Nos. 6634/6635

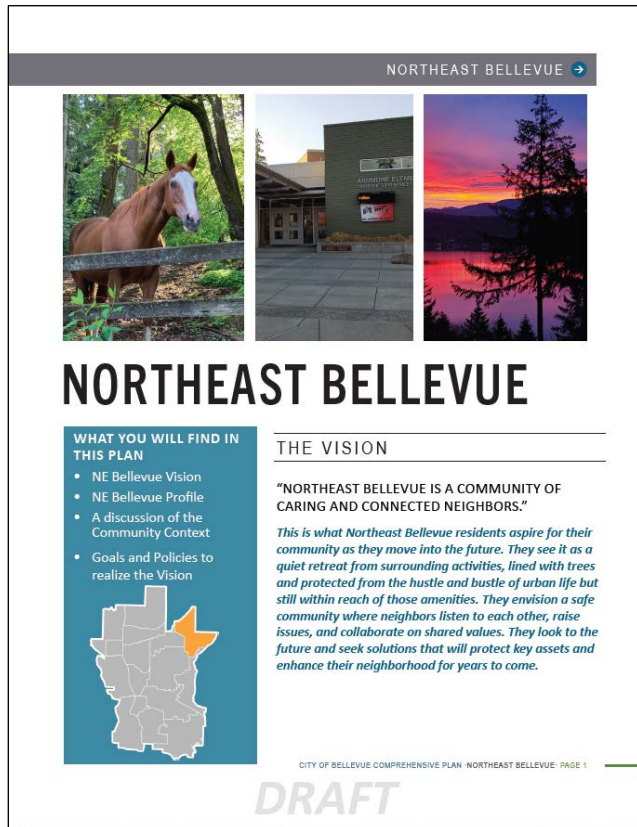
- Updates the neighborhood's foundational policy document
- Captures neighborhood goals
- Includes policies to directly influence how the neighborhood will change over time
- Guides other plans, capital spending, regulations, programs and services
- Does not include action items, other implementation, or land use map changes



Northeast Bellevue CPA: Ordinance No. 6634



Planning Commission
recommendation
attached to Ordinance



Memo Attachment: Amendments suggested on 11/22

1. Amend S-NE-11 regarding mitigation of development impacts
2. New policy: "Create a safe community, including safe places to gather, walk, and play" and narrative to support this policy.
3. Amend S-NE-20: One or neither of below:
 - a. Remove specific reference to detached accessory dwelling units (DADUs)
 - b. Remove entire policy and replace with policy similar to S-NW-24 due to implicit inclusion of DADUs in "mix of housing typologies"
4. Add three new policies from the Northwest Plan addressing aging in place.
5. Additional narrative: "Northeast Bellevue residents value having a clean and healthy environment."



Northeast Bellevue CPA

To maintain and enhance the livability of Northeast Bellevue.

- | | |
|----------------|---|
| POLICY S-NE-10 | Encourage the undergrounding of utility distribution lines where feasible, particularly when new development occurs. |
| POLICY S-NE-11 | Collaborate with neighboring jurisdictions to promote a welcoming experience when crossing jurisdictional boundaries <u>and work with neighboring jurisdictions to ensure that development impacts are mitigated.</u> |
| POLICY S-NE-12 | Encourage clustering of essential services such as schools, libraries, community and recreation centers to make access to public services and amenities more convenient and accessible by all travel modes. |

#1



Northeast Bellevue CPA

Traditionally, Northeast Bellevue has had few places for gathering informally with one's neighbors within the neighborhood. New ways and places for meeting and connecting with one's neighbors are needed.

#2 Northeast Bellevue residents value living in a safe and inclusive community. They value having safety in their homes, on their streets, and in places where people shop, work, and gather. Northeast Bellevue residents also value having a clean and healthy environment. The policies below seek to expand opportunities for strengthening community connections and safety in Northeast Bellevue.

Note: Greyed out amendment is associated with amendment #5

POLICY S-NE-19 Support community organizations that allow residents to connect with one another and with the City.

#2 NEW POLICY Create a safe community, including safe places to gather, walk, and play.



Northeast Bellevue CPA

Housing Affordability Goals and Policies

To expand opportunities for people of all ages, abilities, and incomes to call Northeast Bellevue home throughout their lifetime.

~~POLICY S-NE-20~~ Explore introducing a mix of new housing typologies such as ~~detached accessory dwelling units~~, duplexes and triplexes to allow options for a range of households.

#3a

OR

#3b

Alternative Amendment: Replace above policy with “Encourage a mix of housing typologies to allow for a range of affordability options with a variety of sizes of housing units, ease of movement for the physically disabled, and visual styles.”

~~POLICY S-NE-20~~ POLICY S-NE-21 Ensure new housing typologies in single-family areas maintain adequate separation from adjacent properties to reduce potential impacts to neighbors.

~~POLICY S-NE-21~~ POLICY S-NE-22 Ensure adequate infrastructure exists for new housing typologies (e.g. transportation, utilities and parks), and work with Bellevue School District to address additional educational facility needs.

~~POLICY S-NE-22~~ POLICY S-NE-23 Build awareness of programs that support and enable older adults to stay in their home as they age.



Northeast Bellevue CPA

~~POLICY S-NE-22~~ POLICY S-NE-23 Build awareness of programs that support and enable older adults to stay in their home as they age.

NEW GOAL: To support seniors staying in the neighborhood as they age.

NEW POLICY: Support the creation of a physical, economic, and social variety of living space types for seniors to remain in the neighborhood.

#4

NEW POLICY: Encourage co-habitation and multi-generational living opportunities for seniors.

NEW POLICY: Encourage housing for the elderly in areas designated for multifamily development.



Northeast Bellevue CPA

Traditionally, Northeast Bellevue has had few places for gathering informally with one's neighbors within the neighborhood. New ways and places for meeting and connecting with one's neighbors are needed.

Northeast Bellevue residents value living in a safe and inclusive community. They value having safety in their homes, on their streets, and in places where people shop, work, and gather. Northeast Bellevue residents also value having a clean and healthy environment. The policies below seek to expand opportunities for strengthening community connections and safety in Northeast Bellevue.

#5

Note: Greyed out amendment is associated with amendment #2



Direction Needed from Council

- Adopt Ordinance No. 6634 on the Northeast Bellevue Neighborhood Area Plan amendment.

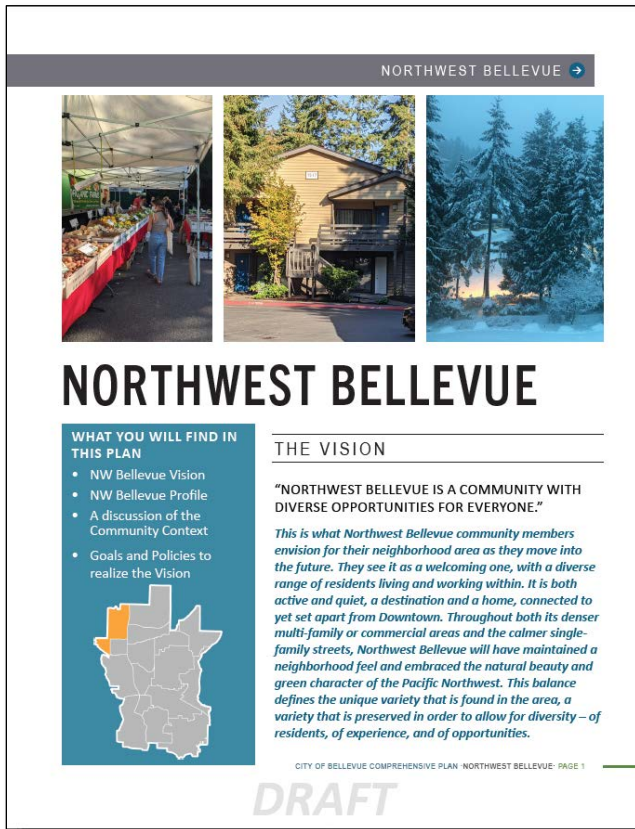


Northwest Bellevue CPA: Ordinance No. 6635



Planning Commission
recommendation
attached to Ordinance

Memo Attachment: Amendments suggested on 11/22



1. New policy: “Create a safe community, including safe places to gather, walk, and play” and narrative to support this policy
2. Delete S-NW-25 regarding exploration of DADUs due to implicit inclusion of DADUs in S-NW-24 reference to “mix of housing typologies”
3. New Policy from Northeast Plan: “Build awareness of programs that support and enable older adults to stay in their home as they age.”
4. Mobility and Access amendments to strengthen safety language.
5. Additional narrative: “Northwest Bellevue residents value having a clean and healthy environment.”



Northwest Bellevue CPA

Northwest Bellevue also has a large percentage of seniors living in the area, many of whom worry about their ability to stay as they age. They find that both physical and economic challenges make it difficult for them to find a place to live and safely get around as they get older. Addressing these needs is a key challenge for the neighborhood.

#1

Northwest Bellevue residents value living in a safe and inclusive community. They value having safety in their homes, on their streets, and in places where people shop, work, and gather. Northwest Bellevue residents value having a clean and healthy environment.

Note: Greyed out amendment is associated with amendment #5

To foster a sense of inclusivity and belonging for a diversity of residents.

- POLICY S-NW-17 Support efforts to welcome new residents to the neighborhood.
- POLICY S-NW-18 Include features and activities for children of all ages within Northwest Bellevue's events and spaces when possible.
- POLICY S-NW-19 Seek opportunities to enhance the usability and accessibility of new development, parks and public spaces throughout the neighborhood for users with disabilities.
- POLICY S-NW-20 Provide seating opportunities where possible at scattered locations throughout Northwest Bellevue to allow residents opportunities to rest.

#1

NEW POLICY: Create a safe community, including safe places to gather, walk, and play.



Northwest Bellevue CPA

Housing Affordability Goals and Policies

To create a diverse supply of housing typologies through the use of existing single- and multi-family densities and the encouragement of housing between these two scales.

POLICY S-NW-24 Encourage a mix of housing typologies, within both lower and higher intensity districts, to allow for a range of affordability options with a variety of sizes of housing units, ease of movement for the physically disabled, and visual styles.

#2

POLICY S-NW-25 ~~Explore introducing detached accessory dwelling units as a permitted use within single family areas.~~

POLICY S-NW-26 Explore regulations to minimize the impact from any new accessory dwelling units to the existing residential character of the street.



Northwest Bellevue CPA

To support seniors staying in the neighborhood as they age.

- POLICY S-NW-21 Support the creation of a physical, economic, and social variety of living space types for seniors to remain in the neighborhood.
- POLICY S-NW-22 Encourage co-habitation and multi-generational living opportunities for seniors.
- POLICY S-NW-23 Encourage housing for the elderly in areas designated for multifamily development.

#3

NEW POLICY: Build awareness of programs that support and enable older adults to stay in their home as they age.



Northwest Bellevue CPA

#4

This great vehicular access can also create a challenge to Northwest Bellevue. Nearby highways and major arterials like Bellevue Way can create barriers to local mobility across multiple modes of

Residents have prioritized these alternate modes of transportation, seeking improvements particularly for pedestrian safety and opportunity. Whether they want to get out for some exercise, enjoy the greenery and fresh air, or get to a destination with Downtown or another commercial use that is walkable for many, Northwest Bellevue residents want to invest in improving the experience for those walking in the neighborhood.

#4

~~With many arterials that break up the neighborhoods and many neighborhoods that lack sidewalks, residents worry about pedestrian safety. They tend to desire prioritization of pedestrian improvements over vehicular, transit, or bicycle improvements as a way to enhance neighborhood safety and experience.~~

To improve pedestrian safety and encourage walking in the area, particularly to or from residential areas,

POLICY S-NW-32 moved to this location: Address vehicle speeds and safety concerns along arterials, particularly along both Bellevue Way NE and NE 24th St near the intersection of the two.

POLICY S-NW-31 moved to this location: Utilize traffic calming measures to discourage people from driving faster than the speed limit within residential neighborhoods.

#4

NEW POLICY: Increase designated pedestrian areas and sidewalks within Northwest Bellevue, prioritizing the safety of pedestrians in determining locations of new walking paths.



Northwest Bellevue CPA

Northwest Bellevue also has a large percentage of seniors living in the area, many of whom worry about their ability to stay as they age. They find that both physical and economic challenges make it difficult for them to find a place to live and safely get around as they get older. Addressing these needs is a key challenge for the neighborhood.

Northwest Bellevue residents value living in a safe and inclusive community. They value having safety in their homes, on their streets, and in places where people shop, work, and gather. Northwest Bellevue residents value having a clean and healthy environment.

#5

Note: Greyed out amendment is associated with amendment #1



Direction Needed from Council

- Adopt Ordinance No. 6635 on the Northwest Bellevue Neighborhood Area Plan amendment.





Direction Needed from Council

- Adopt **General Ordinance** No. 6636 approving the 2021 Comprehensive Plan Amendments.

