

East Link Monthly Update Mitigation

Bellevue City Council

January 26, 2015

Tonight's Agenda

- East Link Project Status
- Mitigation
 - What is mitigated
 - Who regulates
 - What is proposed
 - City role
 - Community concerns
- Next Steps
- Follow-up February 9, 2015
 - Mitigation information requires additional discussions

Discussion focus is on the elements related to the East Link alignment and not the OMSF site

East Link Alignment

Length: 14 miles

Ride times:

- Mercer Island to UW Approximately: 20 min.
- S. Bellevue to Airport Approximately: 50 min.
- Overlake Transit Center to Bellevue Transit Center Approximately: 10 min.

Rider projection: 50,000 daily by 2030

Estimated Cost: \$2.8 billion (2010 \$)

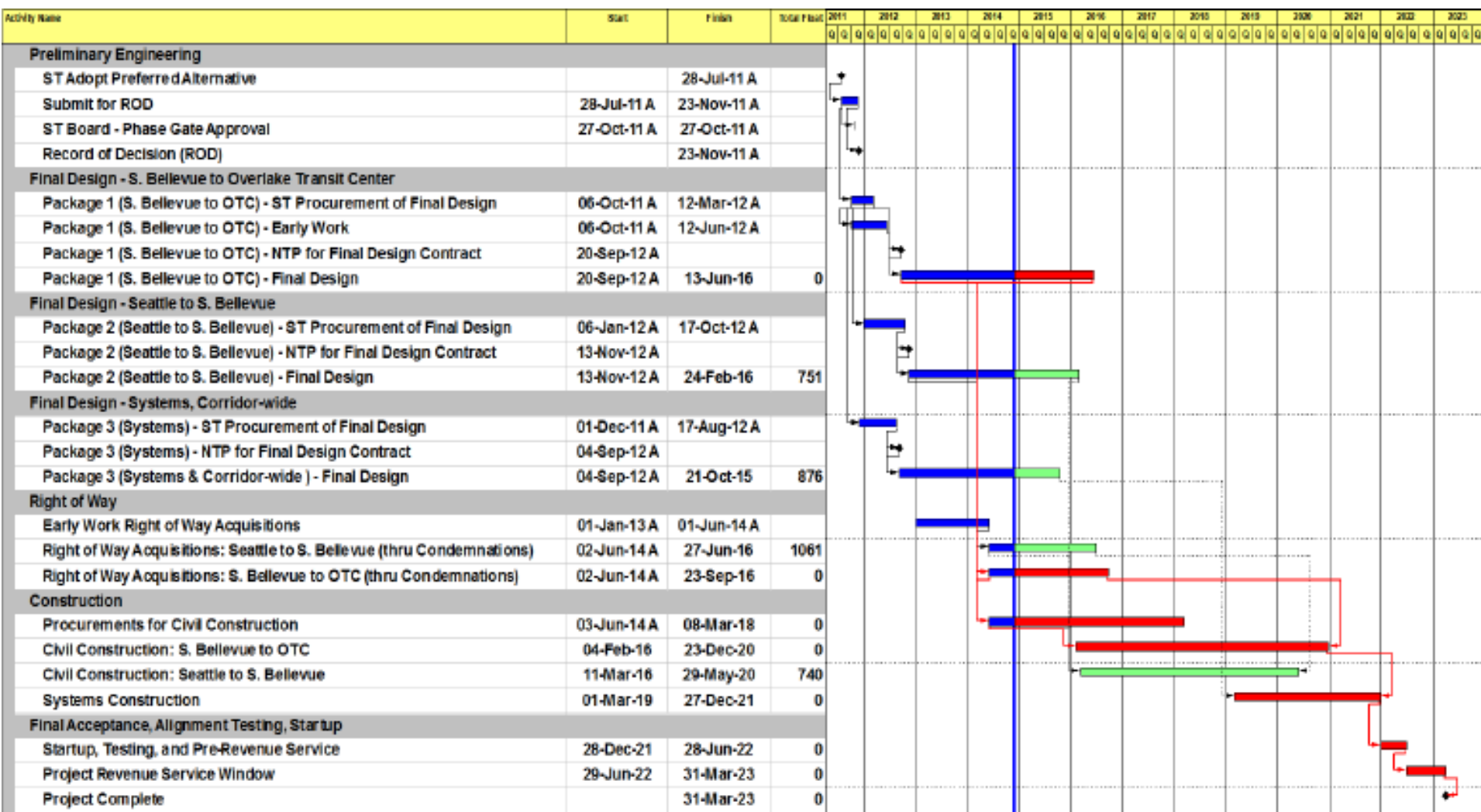
Start of Service: Targeted 2023



East Link Property Acquisition Status

- 235 ST Board Approved Parcels to date for East Link Extension
- 91 Offers Made (includes residential properties on 112th SE in Bellevue)
- 61 Signed Agreements / Closings
- 219 Relocations Required
- 68 Relocations Complete

East Link Project Schedule Summary



What Is Mitigation?

- Mitigation is the effort to avoid, minimize or offset known impacts
 - **Avoid impacts:** avoid the need to mitigate by making early design changes
 - **Minimize impacts:** When impacts are unavoidable, make them as minor as possible
 - **Mitigate impacts:** Create design solutions that mitigate impacts and satisfy code requirements

Project Mitigation

- Natural Resources
- Noise and vibration
- Parks and open space
- Traffic
- Air quality
- Visual
- Historical, cultural, architectural resources
- Geology and soils

Who And Or What Regulates It?

- NEPA/SEPA – Environmental Impact Statement (EIS)
- FTA – Record of Decision
- Federal Highway Administration (FHWA)
- WSDOT
- United States Army Corps of Engineers (USACE)
- Department of Ecology (DOE)
- United States Fish and Wildlife Services (FWS)
- Washington Department of Fish and Wildlife (WDFW)
- United States Environmental Protection Agency (EPA)
- Washington Recreation and Conservation Office
- National Parks Service
- Migratory Bird Treaty Act (MBTA)
- Bald and Golden Eagle Protection Act
- Endangered Species Act (ESA)
- Puget Sound Clean Air Agency (PSCAA)
- State Historic Preservation Offices (SHPO)
- City of Bellevue Codes and Permits

Construction Mitigation

- Road / traffic disruptions and durations
- Business impacts and access
- Neighborhood impacts and access
- Noise and vibration

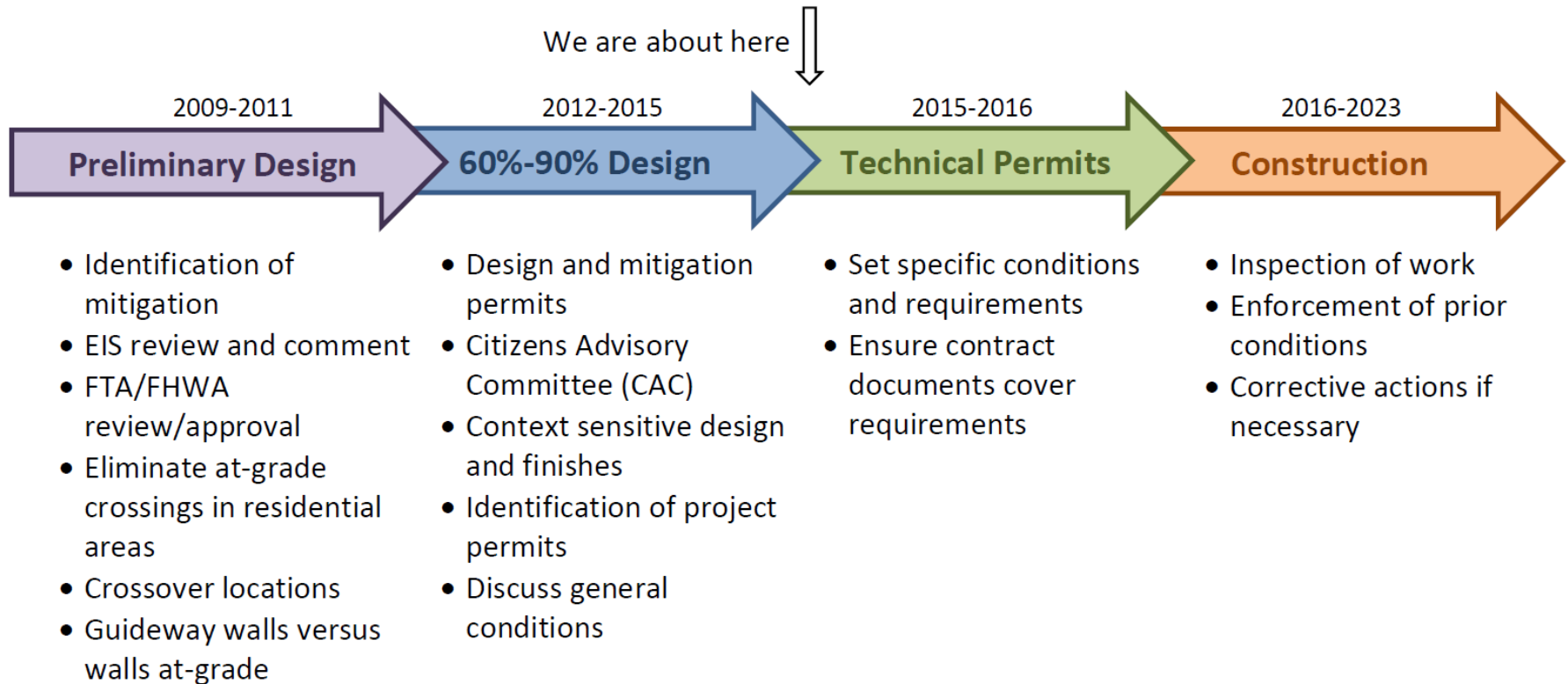
NEPA/SEPA

- National Environmental Policy Act (NEPA) 1969 is the primary law governing the Federal Transit Administration's (FTA) Many different federal laws, rules, and regulations govern environmental review
- **NEPA establishes a process for coordinating compliance with each law** through the preparation of an Environmental Impact Statement (EIS) for all major federal actions significantly affecting the environment

East Link

- East Link Final Environmental Impact Statement (FEIS) July 2011
- Federal Transit Authority (FTA) Record of Decision November 16, 2011
- Federal Highway Record of Decision November 17, 2011
- East Link EIS/SEPA Addendum March 2013

Design, Mitigation And Permitting Timing



What Is The City's Regulatory Role?

Permitting is the mechanism for the city to regulate compliance with city codes during & after construction

- Critical Areas Ordinance
- Land Use Codes
- Noise Code
- Transportation Codes

Sound Transit obtains multiple permits from the City

- Shorelines
- Design and Mitigation
- Clear and Grade
- Right-of-Way Use
- Building
- Mechanical/Electrical
- Fire
- Building Demolition
- Utility Developer Extension

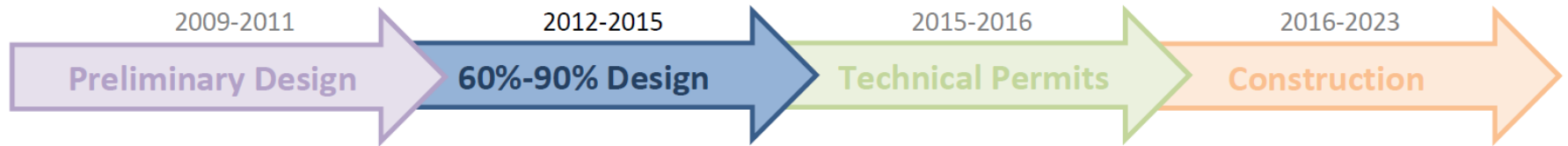
What Is Unique About East Link?

- Collaborative Design Process
 - Directed staff from both agencies to collaborate through technical working groups
 - Work through issues at staff level to try and avoid impacts as much as possible
- Land Use Code Changes
 - LUCA governs the city's ability to regulate the design and mitigation of the final East Link project
 - Light Rail Permitting CAC process

Key Concerns City Staff Have Heard?

- General construction impacts/duration
- Traffic: lane and road closures
- Construction noise
- Operational noise
- Business interruptions
- Neighborhood cut-through and parking
- Mercer Slough
- Project permitting

Light Rail Permitting



- Identification of mitigation
- EIS review and comment
- FTA/FHWA review/approval
- Eliminate at-grade crossings in residential areas
- Crossover locations
- Guideway walls versus walls at-grade

- Design and mitigation permits
- Citizens Advisory Committee (CAC)
- Context sensitive design and finishes
- Identification of project permits
- Discuss general conditions

- Set specific conditions and requirements
- Ensure contract documents cover requirements

- Inspection of work
- Enforcement of prior conditions
- Corrective actions if necessary

Light Rail Permitting CAC

- 9 members appointed by the Council in 2013
- Charged with serving as the city-wide perspective to assist in the context sensitive design of East Link in Bellevue
 - Venue for public comment
- Not charged with overseeing technical mitigation, construction or construction mitigation
- Provide Advisory Documents to Development Services Director
 - Preliminary documents for all segments in 2014
 - Final advisory document for Bel-Red segment October 2014
 - Nearing completion on final advisory document for south Bellevue
 - Permit applications not yet received for East Main and Downtown

East Link Permitting CAC Purpose

- **Dedicate the time** necessary to represent community, neighborhood and citywide interest in the permit process
- **Ensure the issues of importance are surfaced early** in the permit review process while there is still time to address design issues while minimizing cost implications
- **Consider the communities and land uses** through which RLRT systems or facility passes, and set the “context” for the regional transit authority to respond to as facility design progresses
- **Help guide RLRT system and facility design to ensure that neighborhood objectives are considered** and design is context sensitive by engaging in on-going dialogue with the regional transit authority and the city, and by monitoring follow-through
- **Provide a venue for receipt of public comment** on the proposed RLRT facilities and their consistency with policy and regulatory guidance of paragraph 20.25M.035E and sections 20.25M.040 and 20.25M.050
- **Build the public’s sense of ownership in the project**
- **Ensure CAC participation is streamlined and effectively integrated** into the permit review process to avoid delays in project delivery.

Mercer Slough

Shoreline Permitting

- December 19, 2013: Shoreline Substantial Development and Shoreline Variance (height) submitted
 - Portions of project within Shoreline Overlay District
 - Segment of guideway exceeds 35-ft height limitation
- November 6, 2014: Shoreline permits approved by City of Bellevue
- December 9, 2014: Department of Ecology issued decision to approve
- Currently under appeal

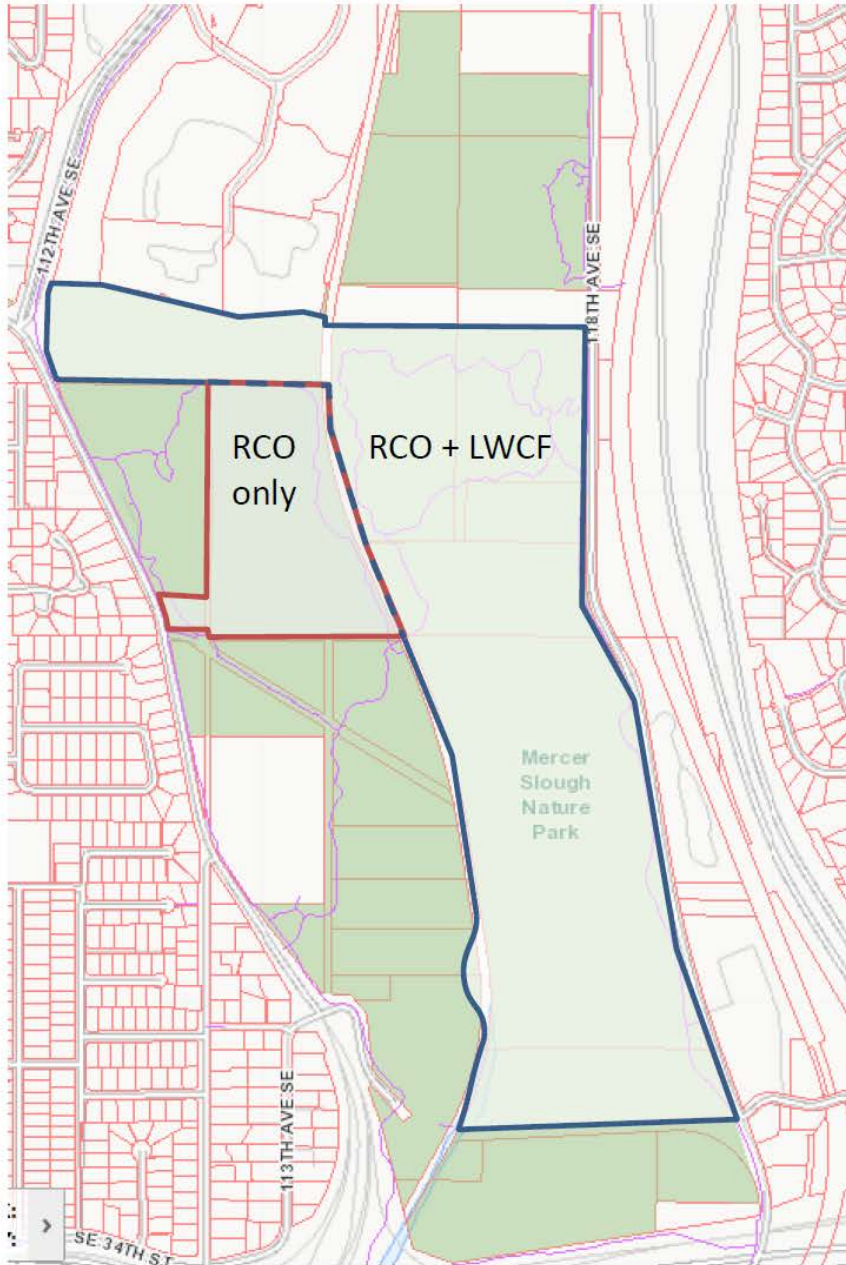
Mercer Slough

Recreation and Conservation Funding Board

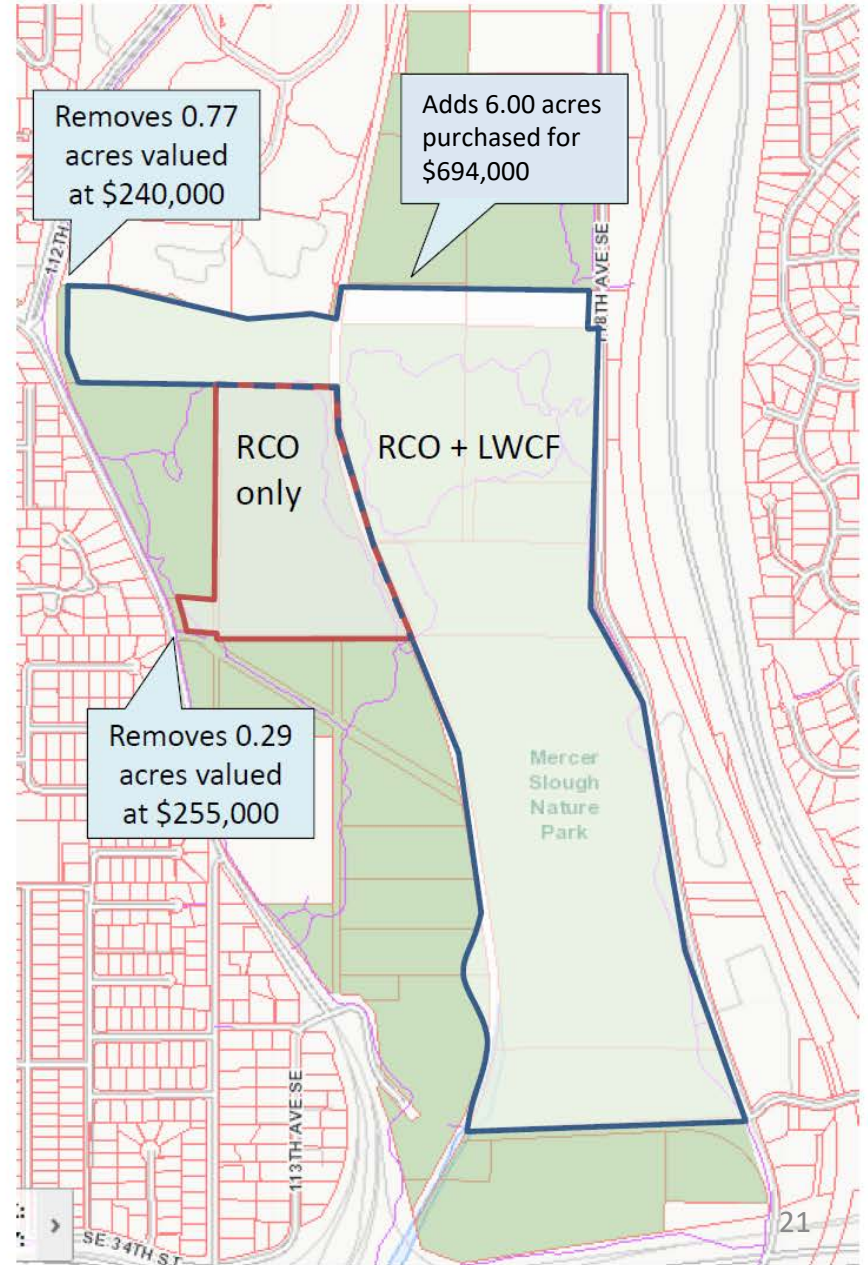
- State and federal outdoor recreation grants used for acquisition
- Grant conditions allow park land to convert to another use if conditions met:
 - All practical alternatives to the conversion have been evaluated
 - Substitution property of equivalent size, value and function is provided
- Conversion of property must be approved by the State Recreation and Conservation Funding Board (RCFB) and the National Parks Service

Mercer Slough Nature Park Conversion

Existing Boundary



Proposed Boundary



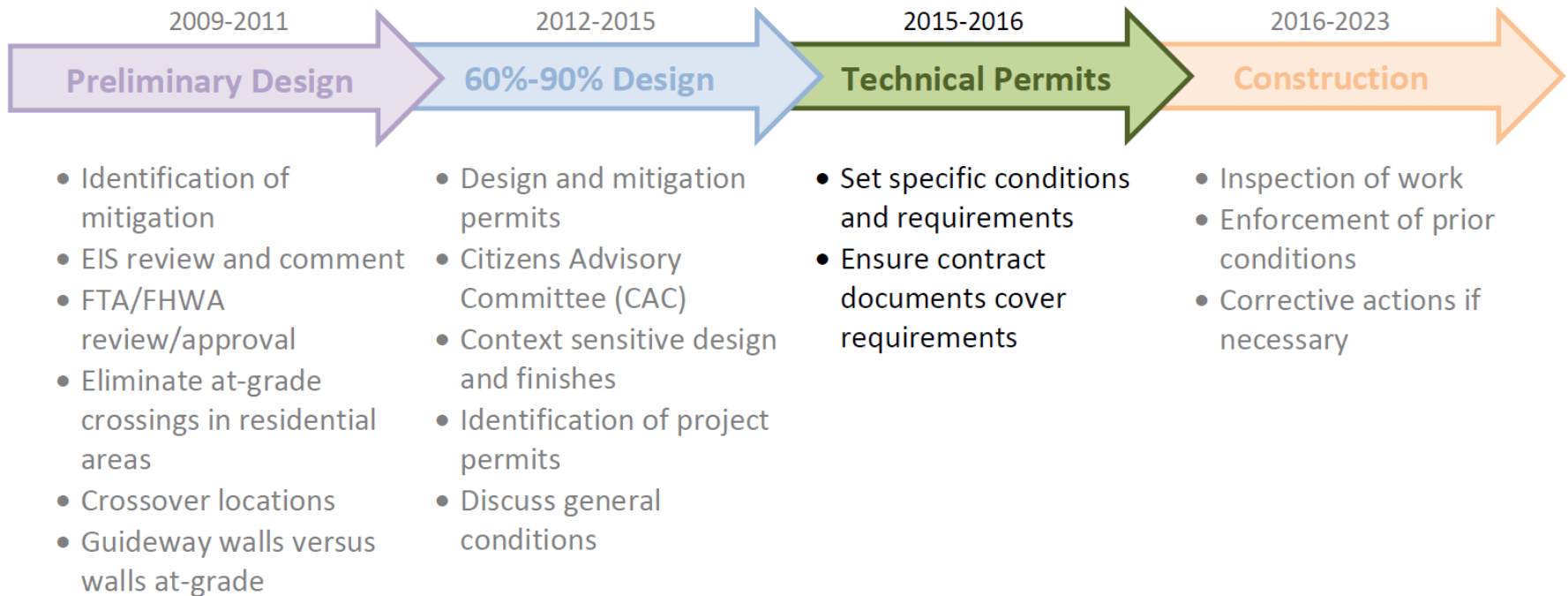
Operational Noise

- Generally, most concerns with:
 - Wheel squeal at curves in track
 - Crossovers
 - Station announcements
 - Safety features – bells, chimes
 - Night time operations

Proposed Operational Noise Mitigation

- Eliminated all traffic crossing in residential areas
- Closed SE 4th
- Some locations walls extended beyond FTA requirement
- Train in retained cut in front of Winter's house
- Lesson's learned from Central Link applied to East Link
 - Lubricators applied to tight curves
 - Night time reduction in bells, chimes, announcements
- Directional bells, chimes, announcements
- Going through review process

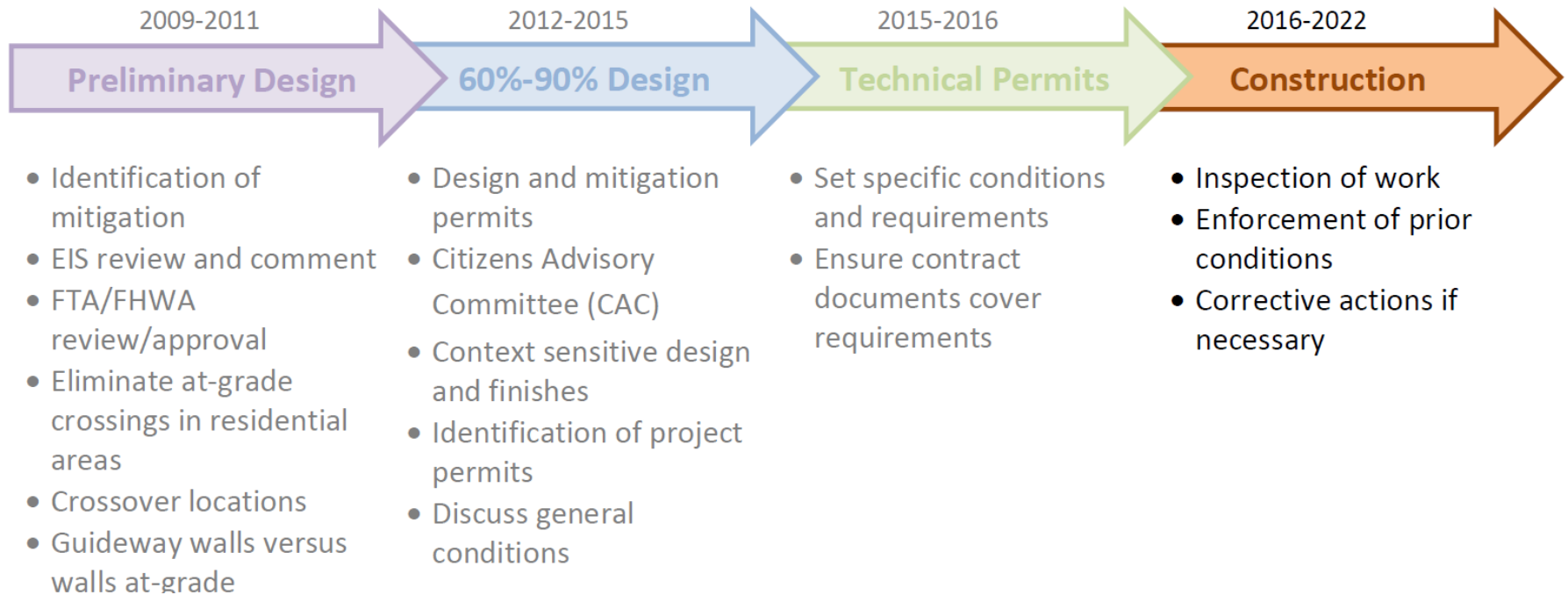
Technical Permits



Technical Permits

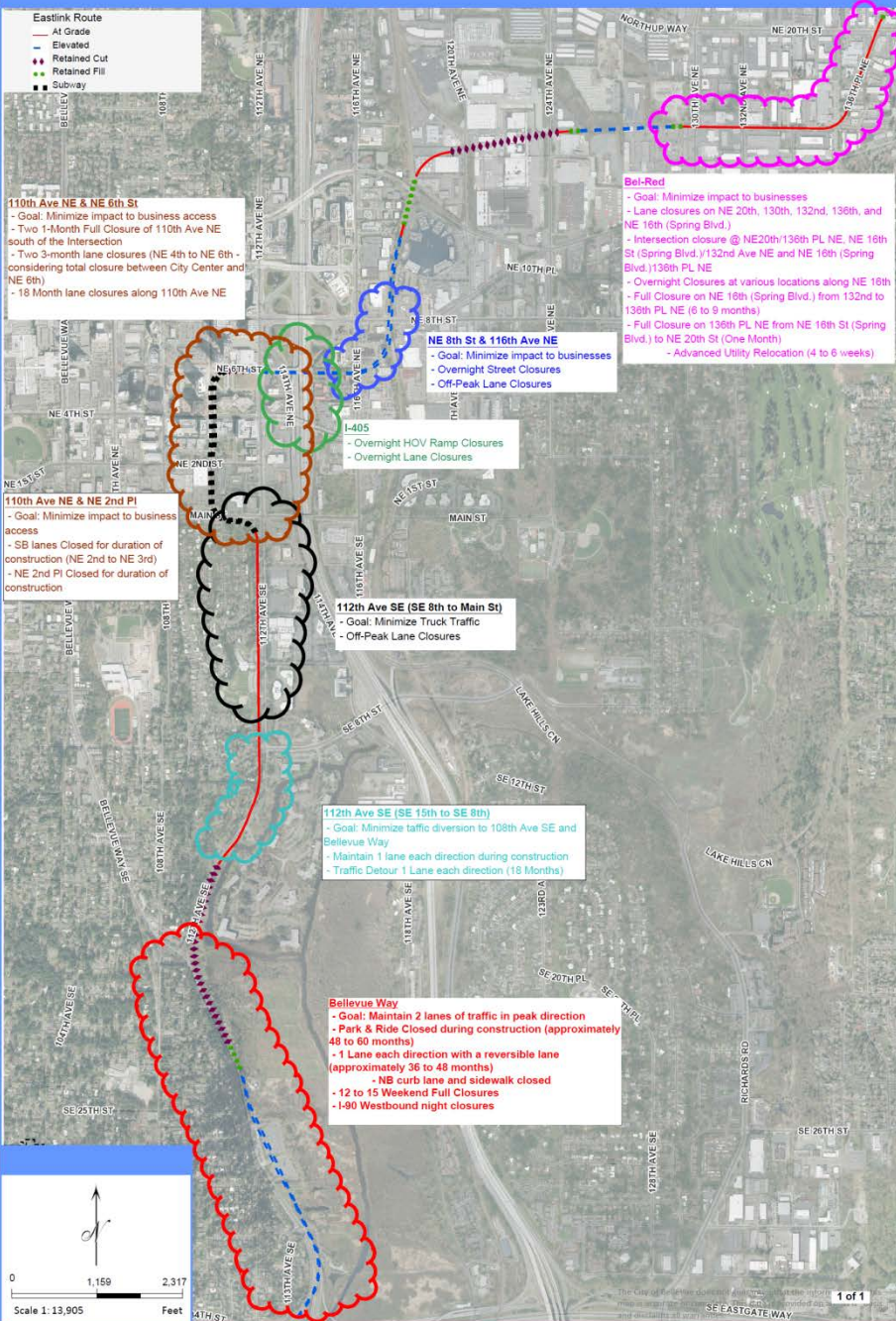
- Clear and grade
 - Building
 - Mechanical/Electrical
 - Fire
 - Building Demolition
 - Utility
 - Right of Way Use
-
- Technical permits have started to come in for the tunnel segment (clear and grade, right of way use)
 - Utility permitting for the tunnel segment early 2015
 - Building demolition permit for the condominiums along 112th early 2015
 - Mechanical, electrical, fire, building permits anticipated later this year

Construction



Managing Construction

- Challenges with a project of this magnitude;
There will be impacts
- Goals:
 1. Keep traffic moving
 2. Keep neighborhood and businesses accessible
 3. Address business needs and community concerns
 4. Communication and outreach



Keeping Traffic Moving

- September East Link Update
- Right of Way Use Permit Requirements
 - Haul routes
 - Hours of construction
 - Traffic control
 - Provisions for sweeping, excavation and construction
- Work with contractors during construction

Keeping Businesses Accessible

- Goals
 - Minimize disruptions
 - Maximize efficiencies
 - Coordination and communication
 - Ability to respond quickly to issues and concerns
- Sound Transit business outreach program
 - Tailored to the needs of specific businesses
 - Currently researching needs of businesses who will be directly impacted by construction
- Access Downtown example

Keeping Neighborhoods Accessible

- Goal: Ability to respond quickly to issues and concerns
- City has established Neighborhood Services Program
 - Understand current concerns
 - Existing working relationships
 - Toolkit
- Coordination with Sound Transit and construction contractors

Construction Noise and Vibration

- Permitting conditions
- Monitoring during construction
- Building monitoring
- Monitoring, management after construction

East Link Animation

After Tonight's Presentation Community Outreach

- Follow-up with community briefings
- Post information to city web
- On-going community outreach
- Feedback from affected businesses into business outreach program

What's Next

Mitigation

- A lot of work has been done - but there is more to do
- Some elements coordinated once a construction contractor selected
- Staff will continue to:
 - Review permit applications
 - Work on management of construction
- Permit conditions to finalize:
 - Construction work hours and noise
 - Traffic control plans
 - On-going construction traffic management refinements
- Business mitigation work-plan with input from affected businesses

Next Steps

- Return February 9, 2015 for continued mitigation discussion
 - Follow-up to tonight's conversation
 - South Bellevue Park and Ride closure
 - Sound Transit's Business Outreach Program
 - Additional items?
- Continued staff work to negotiate MOU
- Additional Council engagement regarding MOU confirmation/amendment

Questions?

Main Street Park



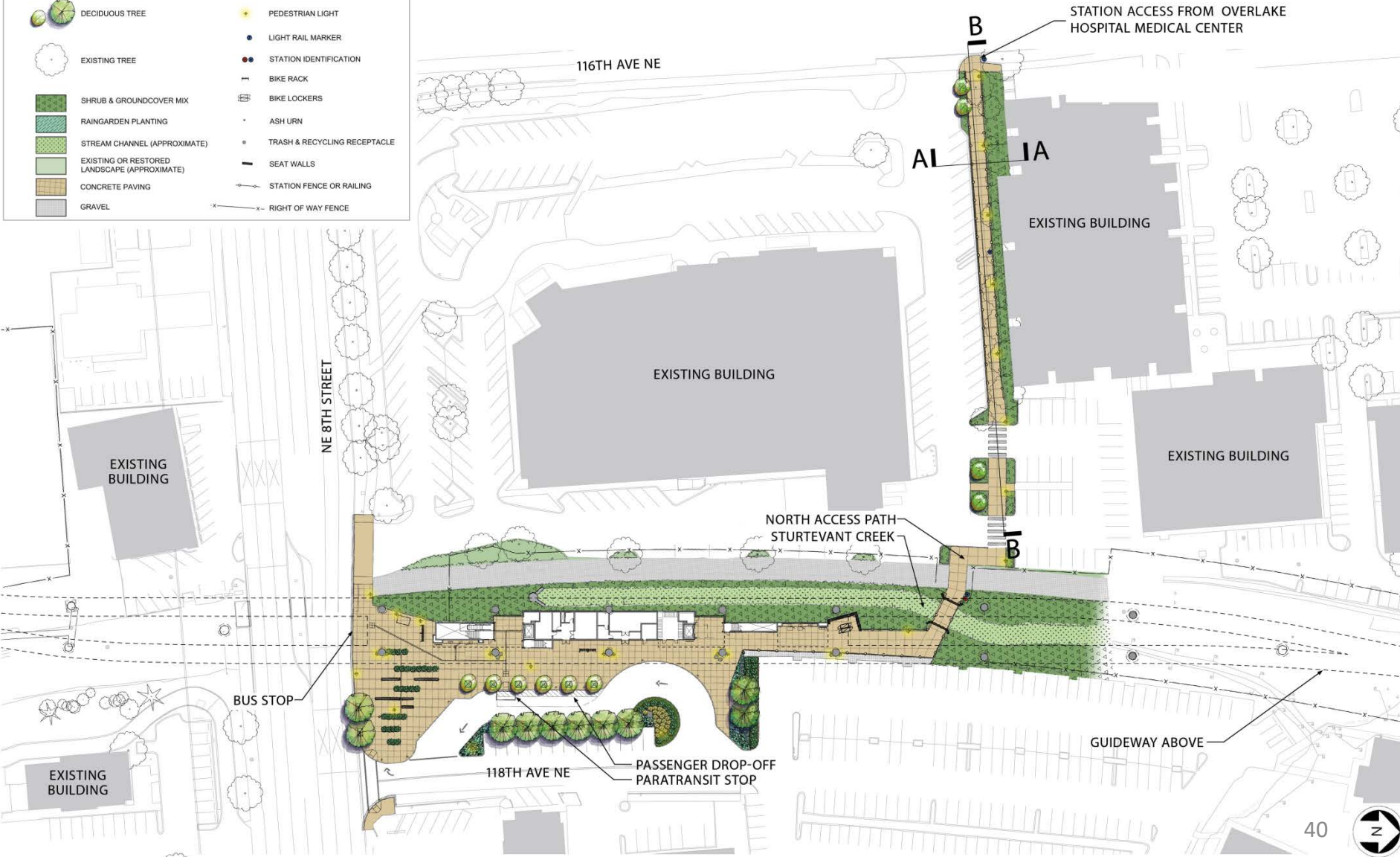
Surrey Downs Park



Hospital Station / Pedestrian Connection

LEGEND

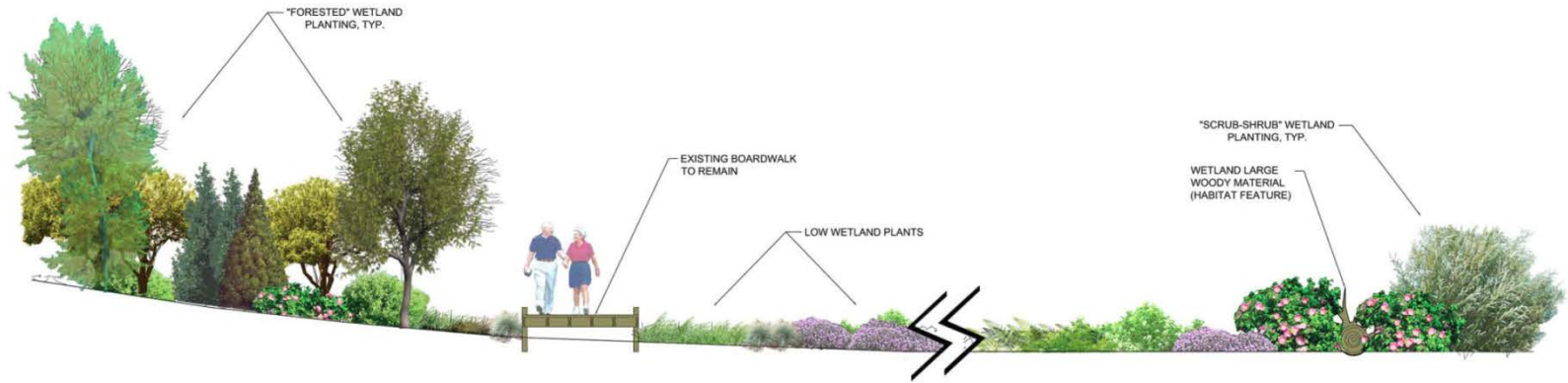
	DECIDUOUS TREE		PEDESTRIAN LIGHT
	EXISTING TREE		LIGHT RAIL MARKER
	SHRUB & GROUNDCOVER MIX		STATION IDENTIFICATION
	RAINGARDEN PLANTING		BIKE RACK
	STREAM CHANNEL (APPROXIMATE)		BIKE LOCKERS
	EXISTING OR RESTORED LANDSCAPE (APPROXIMATE)		ASH URN
	CONCRETE PAVING		TRASH & RECYCLING RECEPTACLE
	GRAVEL		SEAT WALLS
			STATION FENCE OR RAILING
			RIGHT OF WAY FENCE



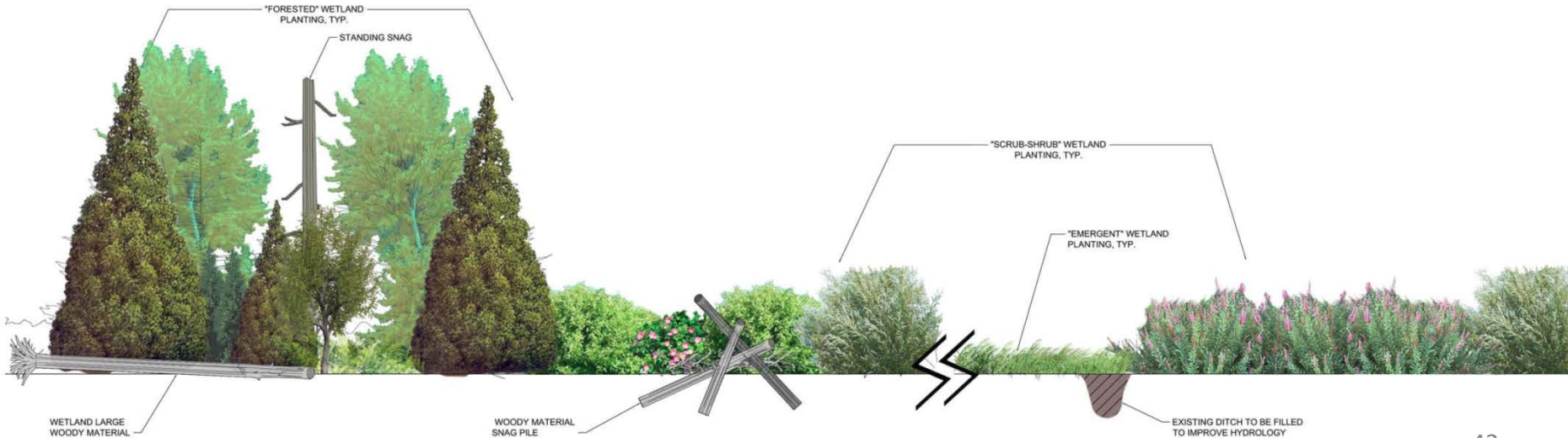
Sweyolocken Mitigation Plan



Sweyolocken Mitigation Section



SECTION A-A

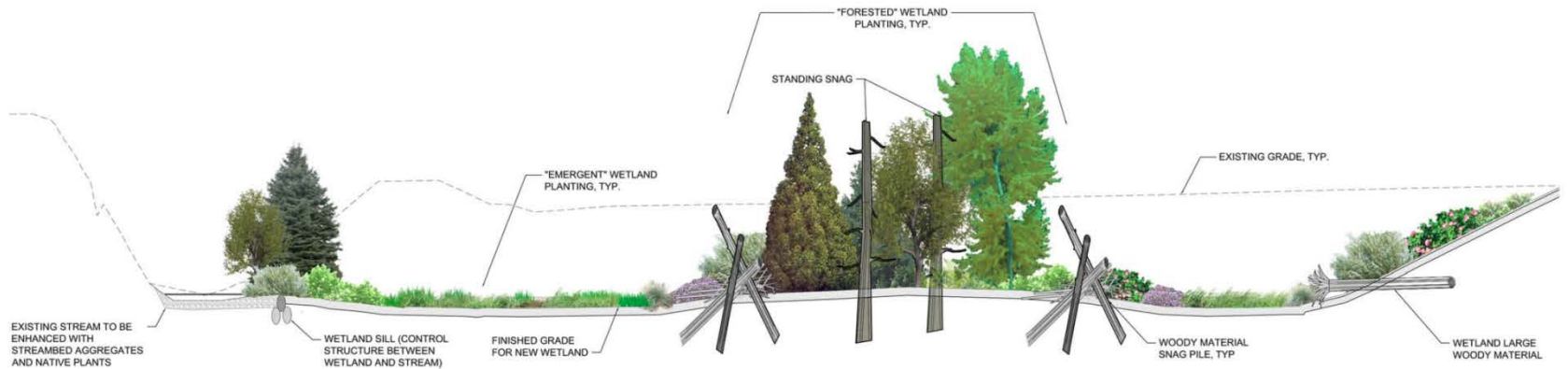


SECTION B-B

West Trib Mitigation Plan



West Trib Mitigation Section



SECTION C-C
SCALE: H: 1"=10' V: 1"=5'