



Grand Connection Crossing

30% Design Update

Jesse R. Canedo, Assistant Director
Anthony Gill, Grand Connection Manager
Community Development

Maher Welaye, Assistant Director
Transportation

3/11/2025



Direction

Consider directing staff to move forward with preparing contracts for the next phase of the Grand Connection Crossing aligned with the proposed budget and scope.



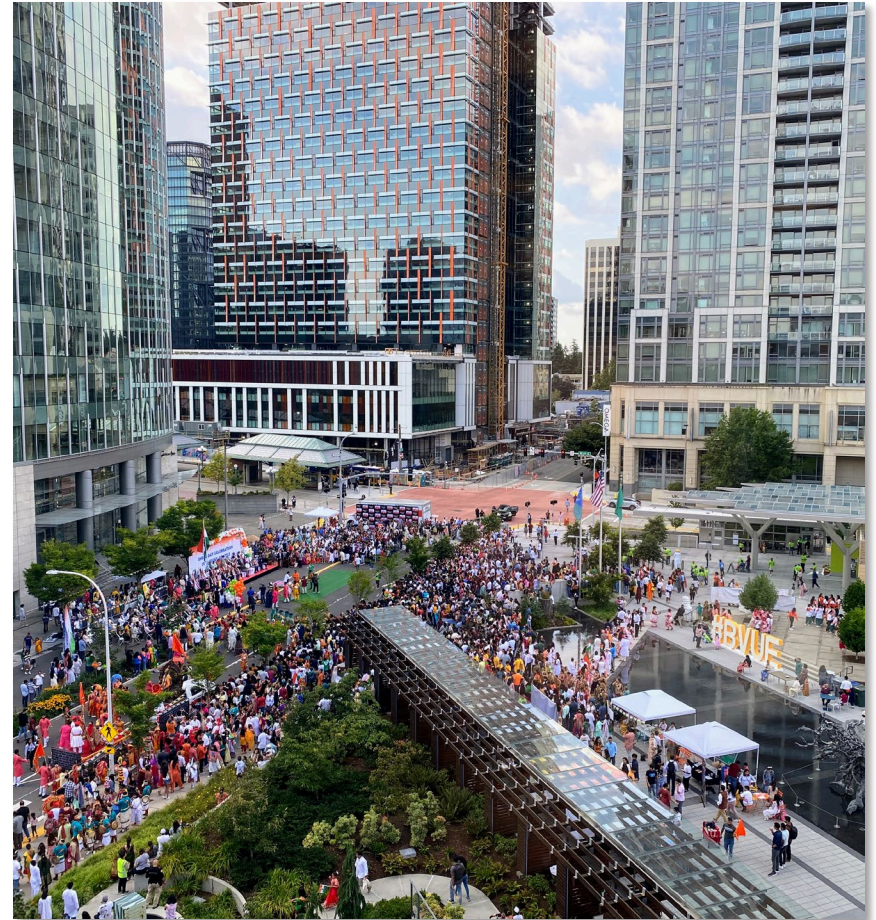
Agenda

1. Broader program update
2. Budget and scope adjustments
3. Delivery method
4. Funding development
5. Timeline and looking ahead



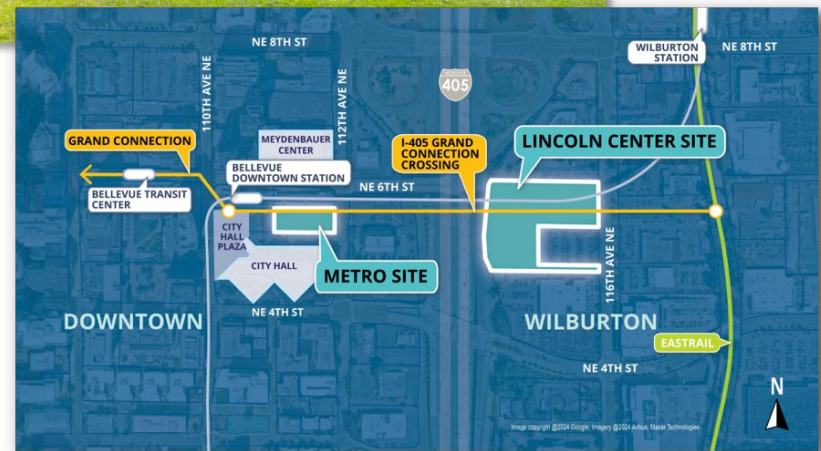
Audience development and programming

- **Community Programming Fund** launching late March to support small-/medium-sized programs and activations.
- \$2,500 - \$10,000 grants available on first-come, first-served basis.



Planning for “Memorable”

- Developing a **public art plan** for the Crossing.
- Development of guiding principles for **City sites redevelopment**.
- Scoping small improvements to help make existing corridor **more cohesive** in advance of FIFA.

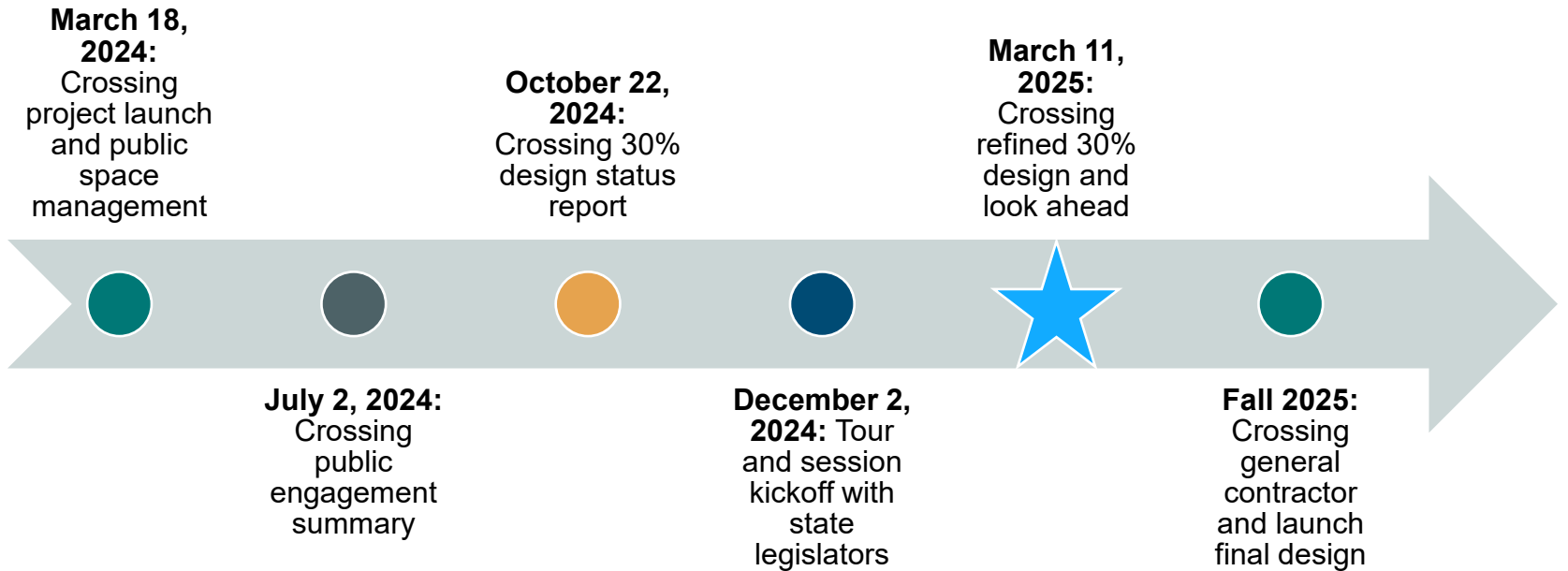


Crossing Executive Summary

- Engineering work launched in Q4 2023
- Alternative delivery integrates construction contractor expertise early
- Broader economic environment may impact project cost and timeline
- Project remains on time

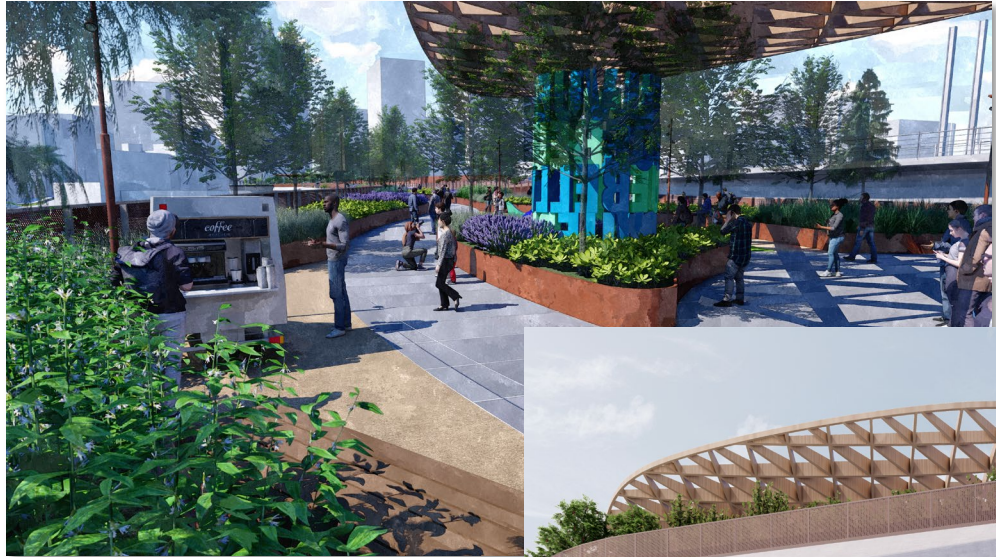


Council Timeline



30% “Visionary” Crossing

- “Visionary” crossing design provided detailed menu of feature options with associated costs.
- Designed to scope based on public input, iterations focused on cost & timeline.



Design refinement

- Refinement to keep costs manageable.
- Considered:
 - Day 1 vs. future features
 - Redevelopment of City-owned and other adjacent sites
 - Feedback from FOGC and other stakeholders
 - Constructability & cost
 - User modeling



Go-forward scope and budget

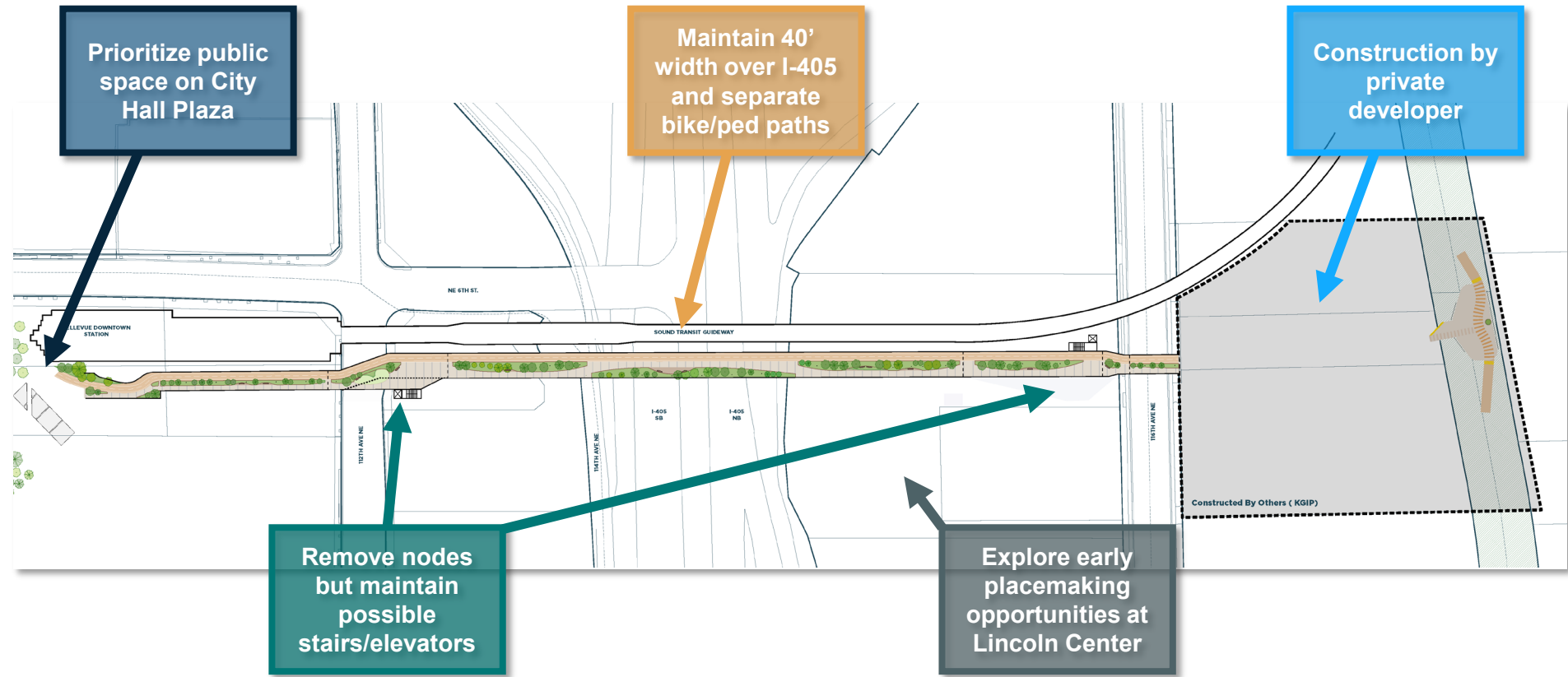
- **Staff recommends Day 1 project within the \$150-200 million budget range.**
- Benefits to public and project –
 - Delivers a safe, usable end-to-end Crossing on Day 1
 - Strong value-to-cost.
 - Allow additional amenities to be built over time with public and private redevelopment.
 - “Memorable but doable.”

Scope Adjustments

Feature	Go-Forward Design
Crossing width	30 feet minimum, with up to 40 feet over I-405
Landscaping and weather protection	Reduce and consolidate landscaping to allow better user flow and flexibility for maintenance and events like marathons. Maintain ability to add weather protection in the future.
Gathering space	Remove the elevated nodes in favor of earlier placemaking on the Metro and Lincoln Center sites. Plan for additional space through private development.
Stairs/elevators	Provide one public and one emergency access staircase near 116 th and 112 th Aves. Plan for redevelopments to connect and provide vertical circulation.
City Hall Plaza	Maintain the current size of City Hall Plaza. Modify the existing plaza to accommodate bicyclist/pedestrian flow and public gatherings.



Refined Day 1 crossing



Alignment with outreach themes

Connectivity

- Build complete link between Eastrail and Downtown first, add more amenities later.
- Direct integration with KGIP development

Safety

- Separate bicyclists and pedestrians to maintain user comfort.

Access to destinations

- At least one staircase or elevator on day one.
- Future redevelopment to provide additional mid-crossing access.

Timeline

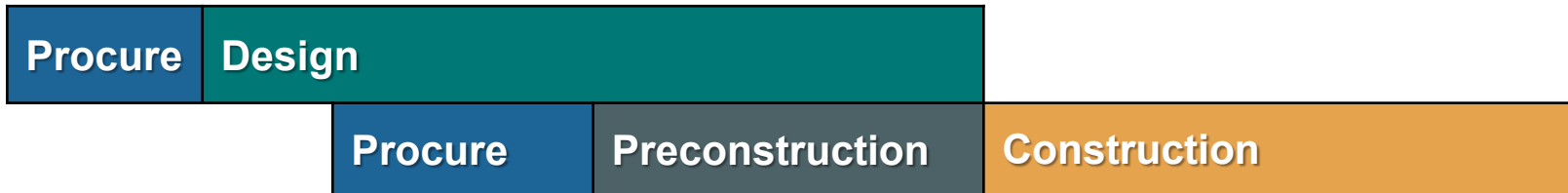
- Refined design helps simplify funding development.
- Shorter construction window.



Preparing for next phase

- The delivery method **integrates additional constructability expertise into the design process.**
- Additional contracts required in 2025 to meet timeline.

General contractor/construction manager (GC/CM)



Traditional design/bid/build (DBB)



Current Funding

- **Design** is 100% funded.
- **Construction** and ROW, if required, is not funded and will require new revenues.
- 100% Funding Plan is a key element for State approvals.



Construction Funding

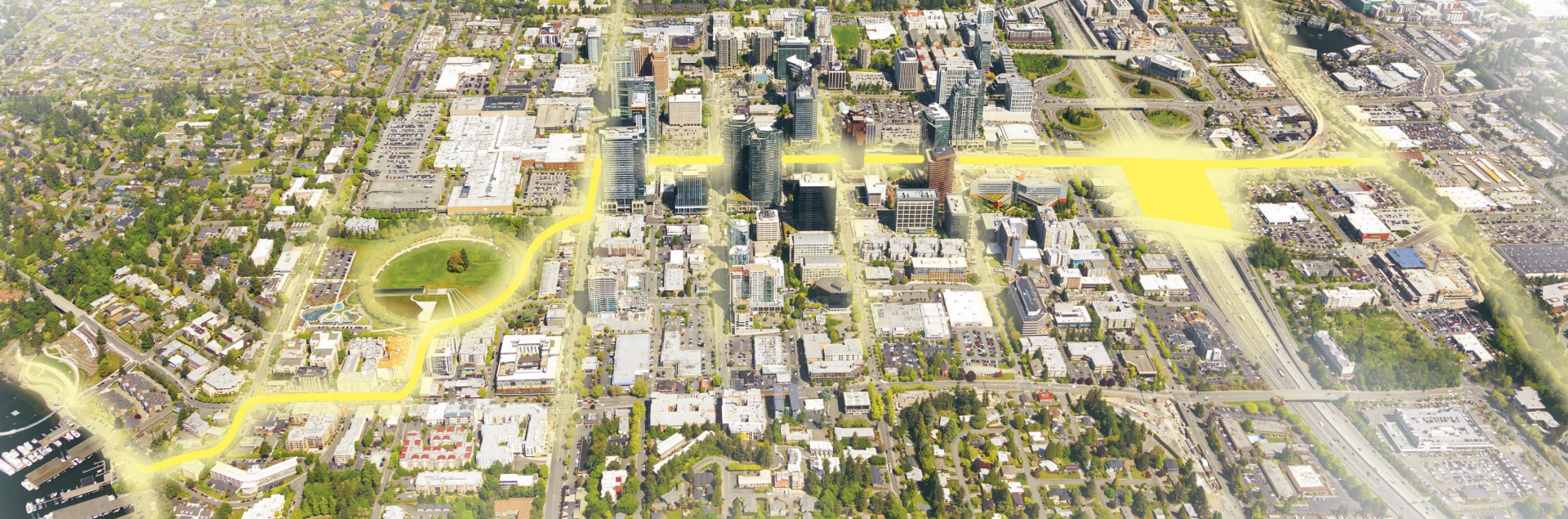
- Staff are reviewing a broad menu of options that include:
 - Potential Municipal tools like Tax Increment Financing, sales tax, banked capacity, among others
 - State partnership
 - Individual & corporate philanthropy
- Operations and maintenance funding plan also in development



Looking Forward



- Anticipated Council touchpoints this year:
 - **Spring:** Contracts for GC/CM owner advisor and continued design work
 - **Late spring/summer:** Conceptual project financial plan (info and direction)
 - **Fall:** Launch final design and engineering (direction)



Direction

Consider directing staff to move forward with preparing contracts for the next phase of the Grand Connection Crossing aligned with the proposed budget and scope.

