

Planning Commission

September 14, 2022

2022 Comprehensive Plan Amendments for Curb Management

Presented By:

Chris Iverson | City of Bellevue

Christina Beason | Vice Chair,
Transportation Commission



Planning Commission Direction

- 1) **Conduct a final review public hearing for the 2022 CPA for curb management policies in the Transportation Element and Downtown Subarea Plan**
- 2) **Commission Discussion**
- 3) **Commission Recommendation**



Outline for Today



**CPA Proposal
Overview**



**Public Comments,
SEPA, Responses**



**Curb Management
Plan Components**



**Requested
Action**



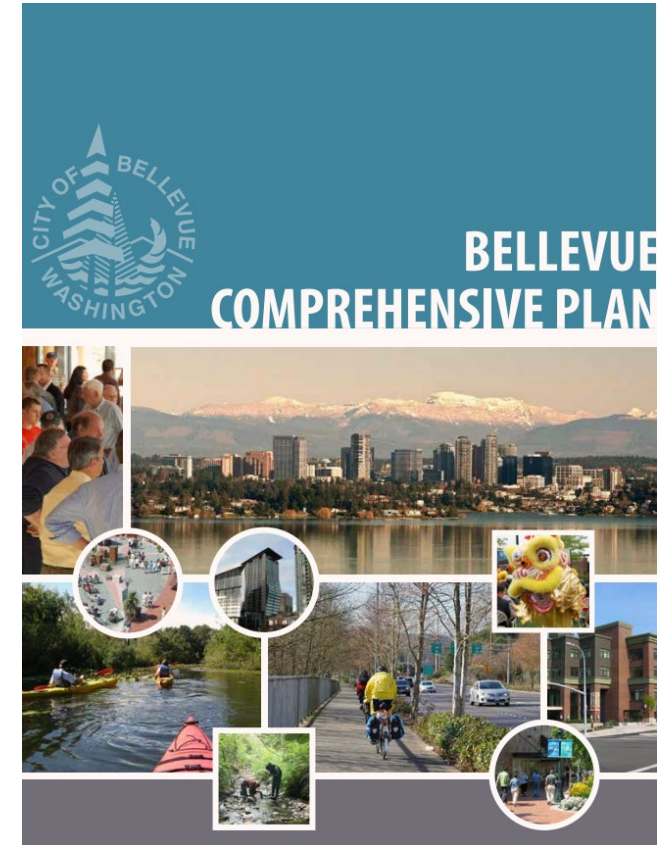
1

CPA PROPOSAL OVERVIEW

2022 CPA Proposal

Create policies in support of curb management

- Direction from Council (Feb 14, 2022)
 - *“Deputy Mayor Nieuwenhuis moved to direct staff to initiate the Comprehensive Plan Amendment (CPA) proposal into the 2022 CPA work program to incorporate policies in the Transportation Element and the Downtown Subarea Plan related to curb management, and to direct work with the Transportation Commission, the community and staff to prepare a Curb Management Plan recommendation for the City Council. Councilmember Stokes seconded the motion. The motion carried by a vote of 7-0.”*
- Transportation Commission recommendation
 - Repeal and amend existing policies to pair with significantly changed conditions.
 - Add seven new policies to provide support for curb management practices.



Recommended Policy Actions

1 Repeal Existing Policies S-DT-157.3 S-DT-157.4 S-DT-157.5 S-DT-157.7	2 Modify Existing Policies TR-128 TR-143 S-DT-157.1 S-DT-157.2 S-DT-157.6	3 Adopt New Policies 7 New Recommended Policies
---	---	---



Comprehensive Plan Amendment Process

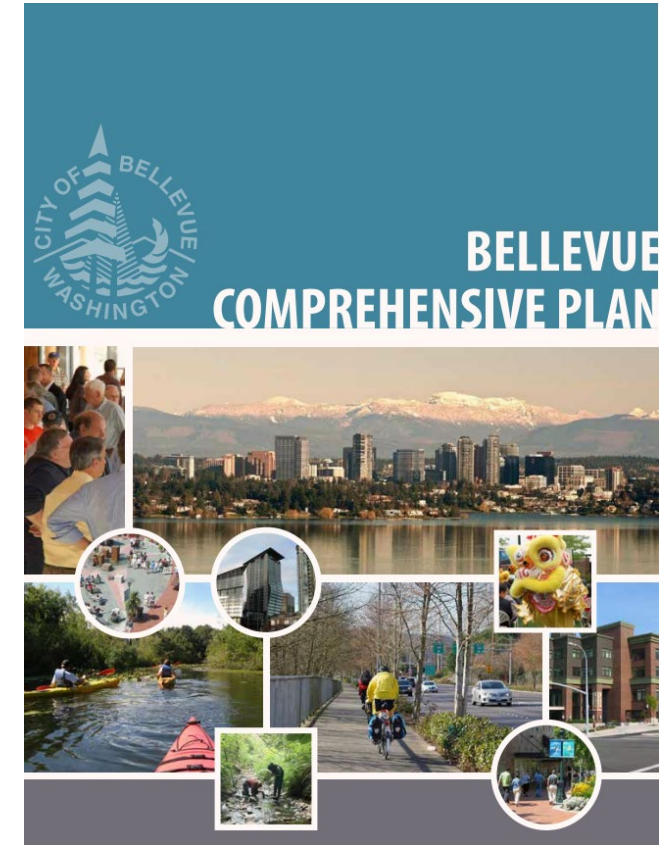
Policy Amendments: Background

Transportation Commission

- 3.63.070 Powers and duties
 - Long-range transportation planning, including participation with the planning commission in preparing, reviewing and recommending comprehensive plan updates and subarea transportation plans; provided, that the planning commission shall review and make final recommendations to the city council on all matters which will be adopted by the city council as part of the comprehensive plan;

Planning Commission

- 3.64.070 Powers and duties
 - Review, consider amendments, and make recommendations to the city council on the comprehensive plan and other planning documents of the city to determine if the city's plans, goals, policies and land use ordinances and regulations implement the state Growth Management Act and promote orderly and coordinated development within the city.



Curb Management Policies

- Existing policy provides some guidance to handle curb matters ad hoc.
- **New curb management-related policies are intended to:**
 - Allow for a broader range of curb uses.
 - Establish programmatic practices in the long-term.
 - Root the CMP within comp plan policy.



Recap of Process

✓ TC Meeting – April 28, 2022

- Presented initial policy recommendations
- 16 policy actions (4 for repeal, 5 to be modified, 7 proposed new policies)

✓ TC Meeting – May 12, 2022

- Reviewed and discussed revised policies
- 8 revised actions, 8 unchanged from April 28th

✓ TC Meeting – June 9, 2022

- Policy recommendations approved
- Proposed policies transmitted to Planning Commission

★
**Policies to Planning
Commission for
review**

Policy Recommendations

- At the meeting on June 9, 2022, the Transportation Commission voted unanimously to approve policy recommendations that support curb management in Bellevue.
- The Transportation Commission submits these recommendations as part of the 2022 amendments to the Comprehensive Plan.
- Recommendations respond to Council direction and are part of the larger task to prepare the Curb Management Plan.



2

PUBLIC COMMENTS, SEPA, RESPONSES

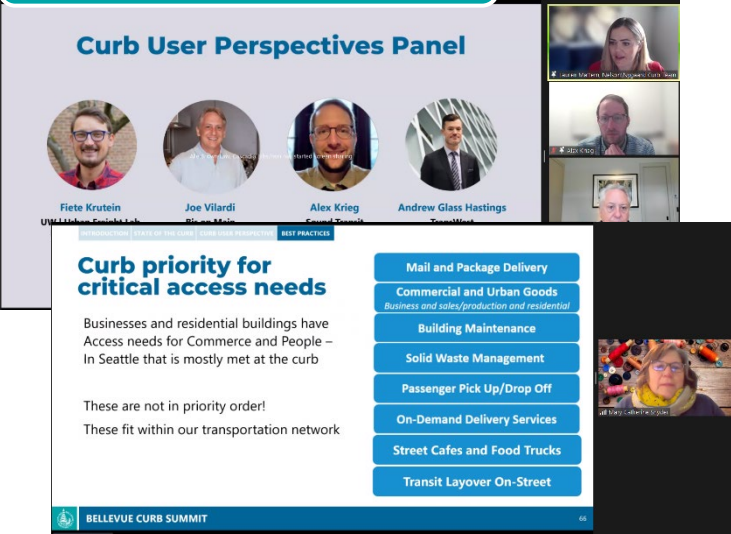
Public Engagement Recap

Stakeholder Interviews & Focus Groups



Concluded 6 focus group in March: Mobility Services, Local Businesses, Regional Employers, Residents, Advocates, and Development.

Curb Summit



Held on Tuesday, March 29. 65 attendance in the morning public session and 30 attendance in the afternoon practitioner workshop session.

Engaging Bellevue Questionnaire



Closed on April 15th. 196 responses received.



SEPA: Notice of Threshold Determination

- “City of Bellevue Transportation Curb Management Plan and Comprehensive Plan Amendment”
- **Issued Determination of Non-Significance on Sept 8**
- Quote from Conclusion:
 - *“The guidance provided by the CPA and CMP will further the City’s goal of creating an efficient, reliable, safe, and integrated multimodal transportation network. The CPA and CMP will also inform City efforts to accommodate growing demands and optimize the curb’s use to align with climate, equity, and economic outcomes of the City.”*

Public Hearing Comments & Themes

- Comment Sources
 - Residents, Business Owners, Developers
 - Bellevue Downtown Association
 - ACES Northwest Network
- Comment Themes
 - Questions regarding curb data (i.e. street parking utilization, inventory, etc)
 - Questions regarding curb pricing strategies
 - Interest in curbside technologies
 - Questions regarding curb flexibility, impacts to multimodal transportation system
 - Questions regarding policies referencing the Curb Management Plan

Staff Responses

- Curb Data:
 - Existing conditions & numerous curb data sources have been provided throughout the CMP process with the Transportation Commission.
- Curb Pricing:
 - National best practices indicate that pricing is the most straightforward, legible, and revenue-positive strategy for managing various curb demands.
 - Equitable pricing strategies reflect economic value while meeting Bellevue goals.
- Interest in curbside technologies
 - Proposed curb policy language & strategies will ensure continued piloting and launching technologies to promote system efficiency and monitor dynamic curb activity.
- Curb flexibility
 - Curbside strategies will pair with goals and performance targets outlined in the Mobility Implementation Plan.
 - Flexible & dynamic curb areas will aim to provide more reliability in the system.

Proposed CPA amendment

- Questions regarding policies referencing the Curb Management Plan
 - Transportation & Community Development staff have proposed policy language amendments to address public feedback and Planning Commission comments from 6/22.
- Proposed amendment:
 - **1) Modify language to remove specific references to the Curb Management Plan for applicable policies.**
 - Example: Designate curb uses, curb typologies, and modal priorities ~~as outlined in the Curb Management Plan~~.
 - Applicable policies to be modified: NEW-1, NEW-2, NEW-6, NEW-7, TR-126, S-DT-157.1
 - **2) Add proposed policy that directs development of a Curb Management Plan.**
 - Proposed language: “Develop and implement a Curb Management Plan that designates a curb typology, establishes a pay-for curb use program recommendation, facilitates dynamic curbside management, and accounts for various movement, access, and placemaking functionalities.”

Proposed CPA amendments

Policy	Action	Final CPA Language
TR-126	Amended language	Provide flexible curbside space within public right-of-way to accommodate parcel delivery and passenger loading through development review and curb operation changes as designated in the Curb Management Plan.
S-DT-157.1	Amended language	Create curbside zones for on-street parking as designated in the Curb Management Plan.
NEW-1	Amended language	Designate curb uses, curb typologies, and modal priorities as outlined in the Curb Management Plan.
NEW-2	Amended language	Implement a pay-for curb use program as recommended in the Curb Management Plan.
NEW-6	Amended language	Consider creating Create designated curbside zones to allow for vendor and food truck activity as outlined in the Curb Management Plan.
NEW-7	Amended language	Create activated curbside zones, such as on-street dining areas, parklets, and other placemaking solutions as outlined in the Curb Management Plan.
NEW-8	New	Develop and implement a Curb Management Plan that designates a curb typology, establishes a pay-for curb use program recommendation, facilitates dynamic curbside management, and accounts for various movement, access, and placemaking functionalities.



3

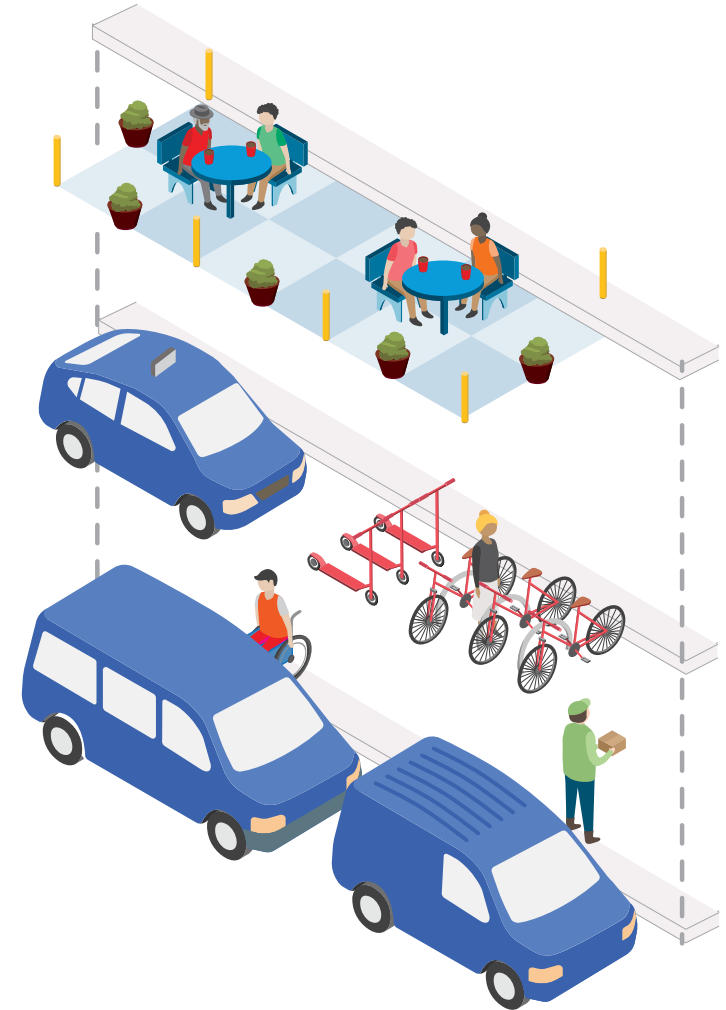
CURB MANAGEMENT PLAN COMPONENTS

Curb Management Plan Outline

- Background & Existing Conditions
- Public Engagement
- Policy Development & Public Process
- Curb Supply & Curb Demand Management
- Recommendations & Implementation Roadmap
- Supporting Documents

CMP and Policy: Summary

- Proposed CPA policy language provides support, direction, and content for the CMP.
- Proposed policies will provide future-oriented direction to create a more orderly and coordinated curbside environment within the transportation system.



CMP Upcoming Timeline

1. October 2022

- Present draft curb typology & prioritization framework, review curb data

2. November 2022

- Finalize curb typology

3. December 2022

- Review supporting documents

4. Q1 2023

- Begin review of draft Curb Management Plan: content & recommendations



REQUESTED ACTION

Planning Commission Direction

- 1) Conduct a final review public hearing for the 2022 CPA for curb management policies in the Transportation Element and Downtown Subarea Plan
- 2) Commission Discussion
- 3) Commission Recommendation





Thank You

Chris Iverson | *City of Bellevue* | civerson@bellevuewa.gov

Christina Beason | *Vice Chair* | transportationcommission@bellevuewa.gov

