

Environmental Services Commission

City of Bellevue Utilities

Capital Improvements Program (CIP) Tour – May 21, 2026

← from Bellevue City Hall, 450 110th Ave NE, Bellevue, WA 98004 to 13709 Somerset Blvd SE, Bellevue, WA 98006

30 min (10.5 miles)

via NE 8th St

Fastest route now due to traffic conditions

Bellevue City Hall

450 110th Ave NE, Bellevue, WA 98004

↑ Exit the parking lot toward 110th Ave NE

167 ft

↘ Turn right onto 110th Ave NE

0.2 mi

↘ Turn right onto NE 8th St

0.3 mi

↘ Keep right to stay on NE 8th St

2.0 mi

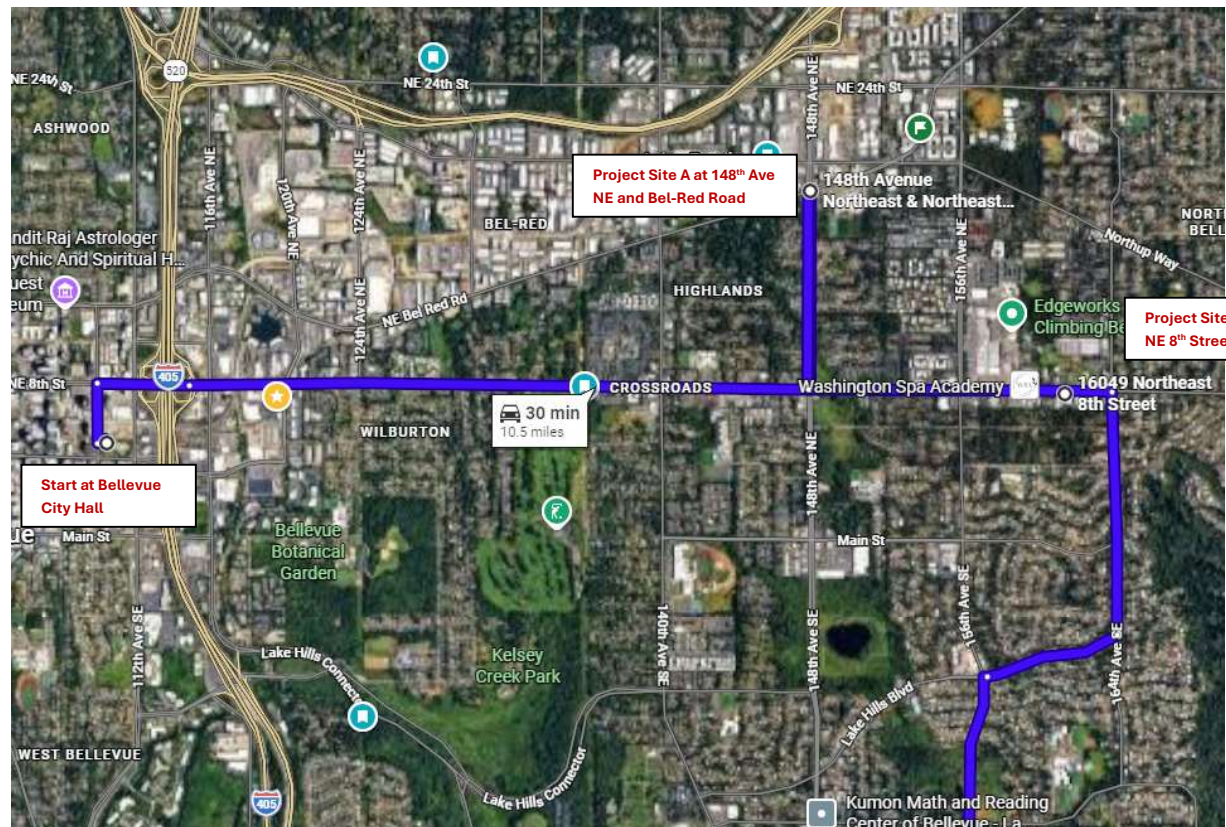
← Turn left onto 148th Ave NE

0.7 mi

11 min (3.2 mi)

148th Ave NE & NE Bel Red Rd
Bellevue, WA 98007

Project Site A – Stormwater Park Planning Study at Commissioners Waterway



148th Ave NE & NE Bel Red Rd
Bellevue, WA 98007

Project Site A – Stormwater Park Planning Study at Commissioners Waterway

Project Site A at 148th Ave NE and Bel-Red

Project Site B at 16049 NE 8th Street

- ↑ Head toward 148th Ave NE
0.7 mi
 - ↶ Turn left onto NE 8th St
0.8 mi
 - ↷ Turn right
62 ft
- 4 min (1.5 mi)

16049 NE 8th St
Bellevue, WA 98008

Project Site B – Crossroads North and South Reservoir Recoating Project

- ↑ Exit the parking lot toward NE 8th St
2 sec (62 ft)
 - Drive along 164th Ave NE, 156th Ave SE, 150th Ave SE and SE Newport Way
13 min (5.0 mi)
 - Drive to Somerset Blvd SE
2 min (0.7 mi)
- 15 min (5.7 mi)

13709 Somerset Blvd SE
Bellevue, WA 98006

Project Site C – Somerset 2 Water Pump Station Improvement Project

Project Site C at 13709 Somerset Blvd SE

