

I-90 Lewis and Sunset Creeks

Fish Passage Projects

Amir Rasaie, Assistant Regional Administrator for Project Development
October 11, 2021

Agenda

1. WSDOT fish passage program
2. Project overview
3. Lane closures
4. Noise
5. Relocation of utilities
6. Fish recovery benefits
7. Public engagement



Fish passage program

- WSDOT created a dedicated fish passage program in 1991
- 344 barriers corrected, opening 1,161 miles of fish habitat
- 2013 federal injunction on state culverts requires WSDOT to speed up this work
- Working with 21 northwest Washington tribes to open 90% of habitat blocked by state culverts by 2030

BEFORE



AFTER



Sunset Creek location

Location details:

- I-90 milepost 10.52
- Half-mile from I-405 interchange
- Close to Factoria Mall and Bellevue College

Notable nearby offices/buildings:

- T-Mobile
- Kaiser Permanente
- Honda Auto Center of Bellevue
- Seattle Humane Society



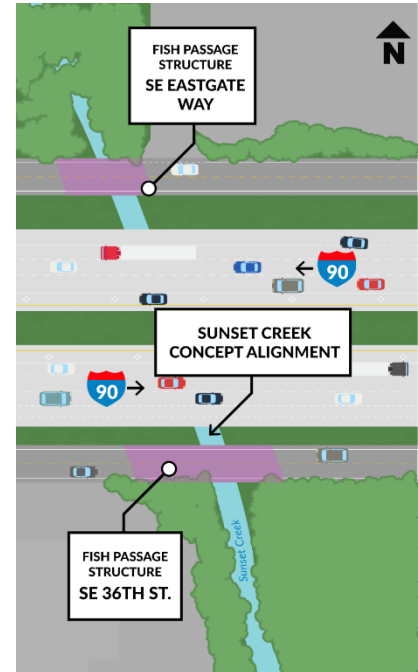
Sunset Creek structures

WSDOT will build four fish passages under:

- Eastbound I-90
- Westbound I-90
- Southeast Eastgate Way
- Southeast 36th Street

Structure details

- 55-foot-wide bridge spans on I-90
- Either bridges or box culverts on Bellevue roads



Lane closures – Sunset Creek

- Subject to traffic study
- Coordination with Bellevue staff
- I-90 lane reductions for two years
- Direct access HOV ramps to/from 142nd closure possible
- Single lane open on Southeast 36th Street
- Single lane open or full closure of Southeast Eastgate Way
- Shifted or detoured Mountains to Sound Greenway Trail



Lewis Creek location

Location details:

- I-90 milepost 13.83
- In Issaquah, just east of Bellevue-Issaquah boundary

Nearby:

- Timberlake Park
- Lakemont Community Park
- Cougar Mountain Zoo



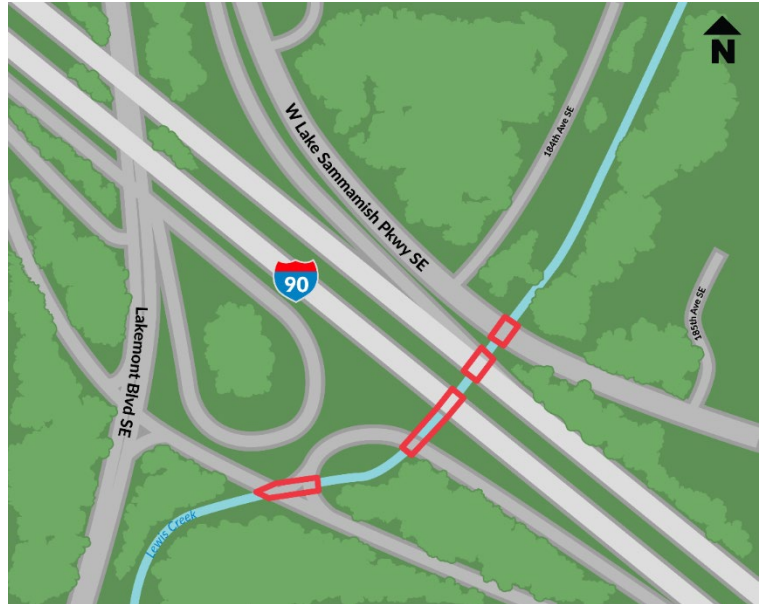
Lewis Creek structures

WSDOT will build fish passages under:

- Eastbound I-90
- Westbound I-90
- On-ramp from Southeast Newport Way to EB I-90
- West Lake Sammamish Parkway Southeast
- Southeast Newport Way

Structure details

- 50-foot-wide bridge spans on I-90
- Either bridges or box culverts on Issaquah roads



Lane closures– Lewis Creek

- I-90 lane reductions for two years
- West Lake Sammamish Parkway Southeast closed for no more than one month
- Southeast Newport Way closed for no more than three months
- On-ramp from Southeast Newport Way to EB I-90 closed for one weekend



Project delivery and timeline

Project delivery

- Design-build project
- Hire contractor to both finish design and construct
- WSDOT is currently working on conceptual designs and drafting the Request for Proposal language
- Bi-weekly coordination meetings with city staff

Timeline	
Request for proposal	April 2022
Hire design-builder	Fall 2022
Begin construction	Spring 2023
Finish construction	Fall 2028



Noise and vibration

Mail noise notices

- Currently studying how wide of a radius to send notices
- Will be sent to residents and business owners at least 14 days in advance

Overnight hours

- Continue to coordinate with city staff on any overnight limitations

Vibration

Coordinating with health care providers in the area to ensure vibration does not interfere with medical equipment

Noise wall

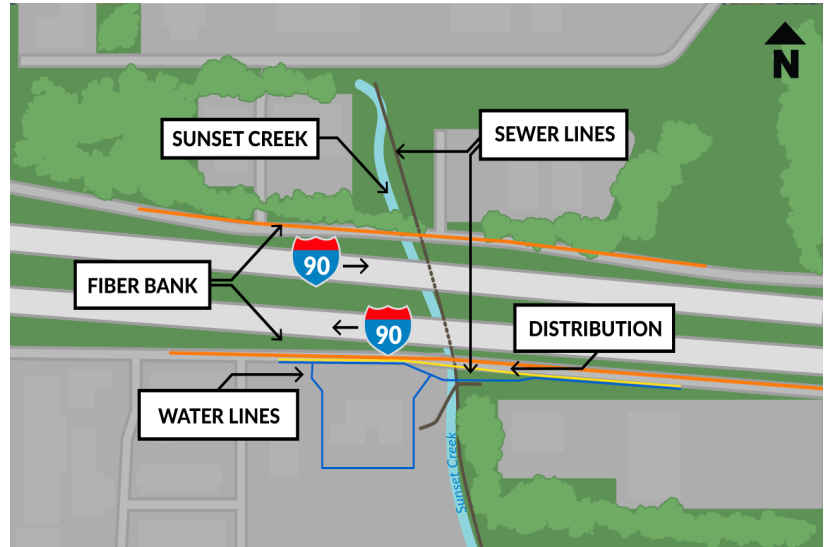
- Lewis Creek – noise wall may need to be rebuilt

Relocation of utilities – Sunset Creek

Three Bellevue utilities will need to be relocated:

- Waterline at SE 36th Street
- Sanitary sewer across I-90 and connections along SE 36th Street
- Telecommunications conduit at Eastgate Way and SE 36th Street

Cost sharing agreement under discussion

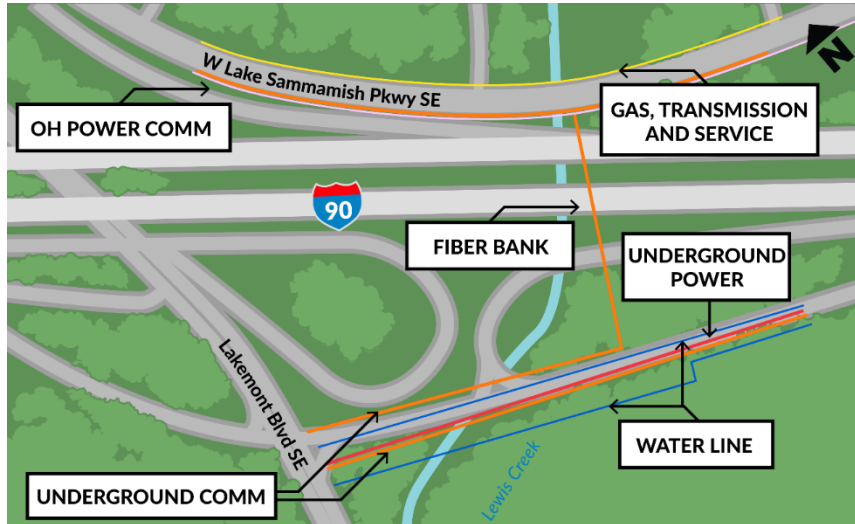


Relocation of utilities – Lewis Creek

City of Issaquah utilities that will need to be relocated:

- Waterlines south of Southeast Newport Way and on West Lake Sammamish Parkway Southeast

There are several other utilities that will be relocated, owned by Cascade Water Alliance, Puget Sound Energy, and telecommunications companies.



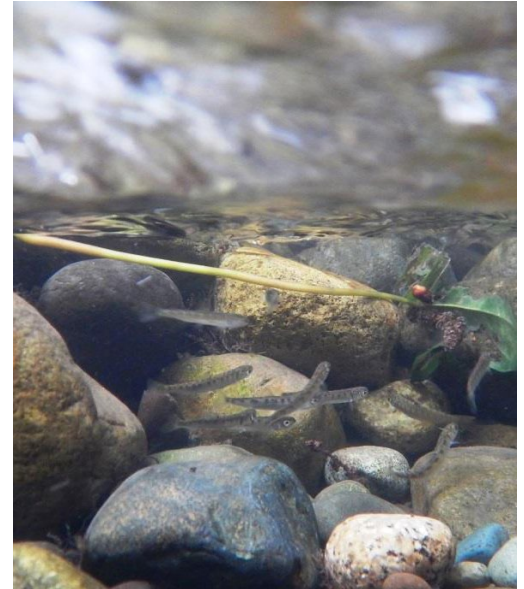
Fish recovery benefits

Sunset Creek

- 1.7 miles of potential habitat gain
- Rated “good-to-excellent” for rearing
- Dependent on removing other culvert barriers not included in project

Lewis Creek

- 2.7 miles of potential habitat gain
- 42,905 square feet of spawning habitat, 6,663 square feet of potential rearing habitat; Kokanee habitat
- Three partial barriers upstream, three barriers downstream



Public engagement

Stakeholder engagement during conceptual design

Hire communications consultant

- Will develop a communications plan

WSDOT outreach strategies

- Community meetings and open houses
- Traditional media
- Social media, videos and blog posts
- Hotline and response to public comments



Contact

Amir Rasaie

Assistant Regional Administrator
for Project Development
amir.rasaie@wsdot.wa.gov

Tim Nau

Assistant Project Engineer
tim.nau@wsdot.wa.gov

Ruth Park

Environmental Manager
King and Snohomish counties
Ruth.park@wsdot.wa.gov

Kris Olsen

Public Information Officer
kris.olsen@wsdot.wa.gov