



City of Bellevue



Bike Bellevue

Transportation Commission

Franz Loewenherz | Mobility Planning & Solutions Manager

Chris Iverson | Senior Transportation Engineer

May 11, 2023

AGENDA

- **Tonight:** Background, information Only.
- **May 25:** Requested concurrence on public engagement strategy.

AGENDA



Bicycle Planning and Implementation



CIP PW-W/B-85



Bike Bellevue Project Area Map



Bike Bellevue Principles



Bike Bellevue Public Engagement

Bicycle Planning & Implementation

2009 Pedestrian
and Bicycle
Transportation Plan

2016 TC
Bicycle Rapid
Implementation
Program

2017-2019:
108th Ave NE
and Main
Street Projects

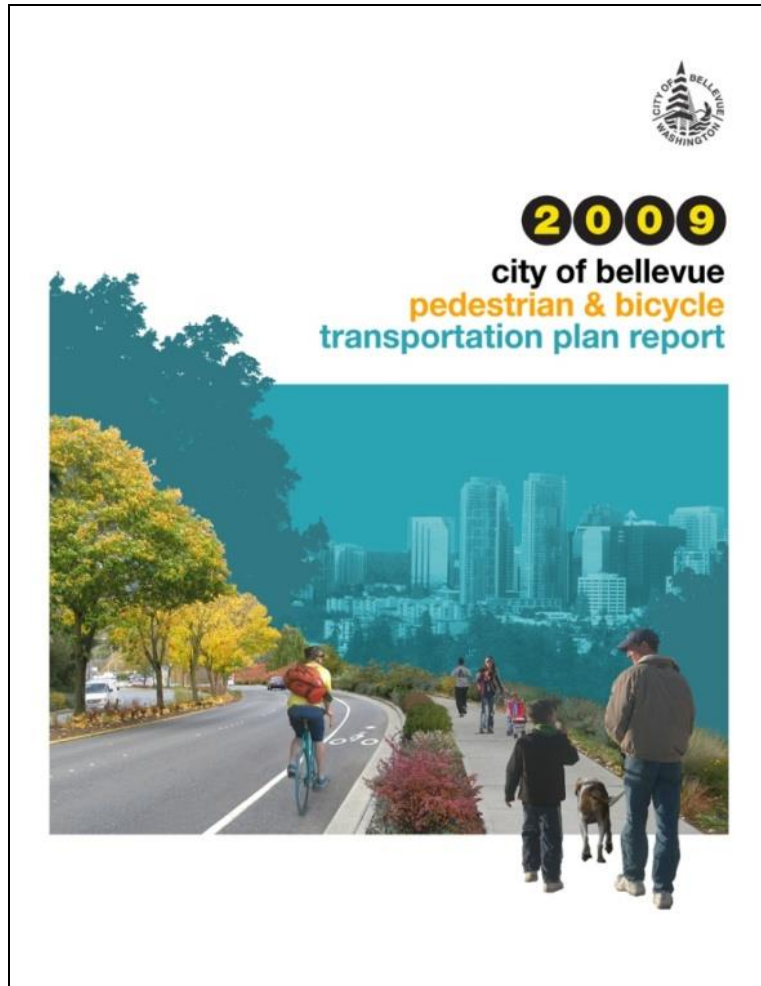
2022 Council
increased CIP
funding to
\$4.5 million

2015
Pedestrian &
Bicycle
Implementation
Initiative (PBII)
Program Principles

2016
Neighborhood
Safety,
Connectivity and
Congestion Levy

2021 Council
approved CIP
#PW-W/B-85
(\$1.5 million)

2009 Pedestrian and Bicycle Plan



- Formulated vision, goals, objectives.
- Assessed gaps in the non-motorized network.
- Developed a project list for peds & bikes.

2015 PBII Program Principles

Bellevue City Council

Claudia Balducci
Mayor

Kevin Wallace
Deputy Mayor

John Chelminiak
Councilmember

Conrad Lee
Councilmember

Jennifer Robertson
Councilmember

Lynne Robinson
Councilmember

John Stokes
Councilmember

PBII Program Principles

To guide the Transportation Commission in its oversight of the PBII, the Bellevue City Council approved the following set of **Program Principles**:

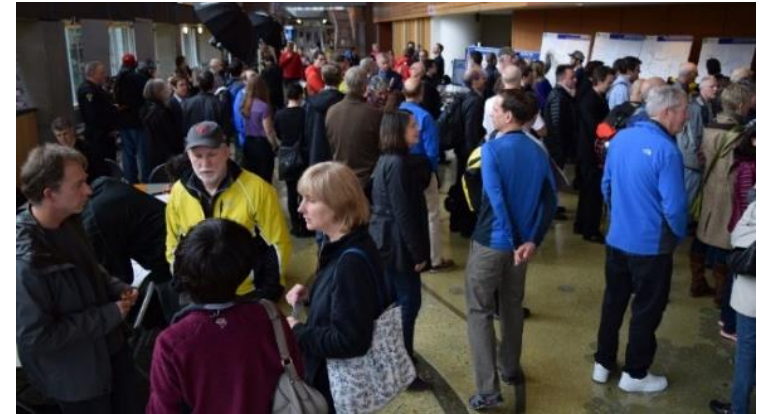
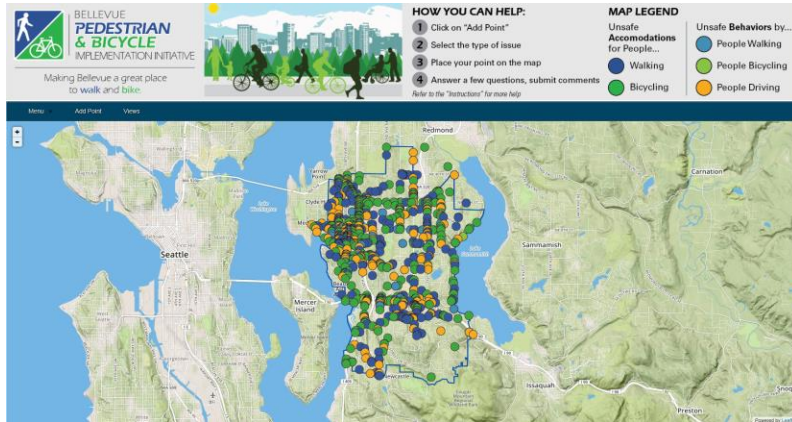
The City Council envisions an accessible, well-connected network of pedestrian and bicycle facilities for Bellevue that (i) enhances livability, (ii) supports economic vitality, and (iii) serves the mobility needs of people of all ages and abilities. The Council developed the following set of Program Principles to direct the Pedestrian & Bicycle Implementation Initiative, a complement of action-oriented efforts that advance non-motorized facility designs and programs identified by the 2009 Pedestrian and Bicycle Transportation Plan to meet or exceed the City's 2019 targets and position the City to realize its long-term vision for a walkable and bikeable Bellevue.

1. Continue to aspire to the vision established by the 2009 Pedestrian and Bicycle Transportation Plan, pursue its goals, which should not be diluted, and monitor its established measures of effectiveness.
2. Undertake an action-oriented initiative that advances projects and programs to help realize the City's vision.
3. Provide a safe pedestrian and bicycle environment, which is a prerequisite to making non-motorized travel a viable, attractive option in Bellevue.
4. Advance the implementation of Bellevue's planned Bicycle Priority Corridors to facilitate continuous bicycle travel along a connected grid of safe facilities throughout the city and the region.
5. Research pedestrian and bicycle count technologies to improve the City's data driven decision-making.
6. Determine where pedestrian and bicycle investments can improve the connectivity of the multi-modal transportation system.
7. Coordinate with other efforts underway in Bellevue related to pedestrian and bicycle issues.
8. Identify partnership opportunities to advance the implementation of non-motorized projects and programs.
9. Engage community stakeholders in setting the priorities for investment in non-motorized facilities.
10. Refine existing metrics to track plan progress and engage other departments as needed to foster a One City commitment to active transportation.

“Advance the implementation of Bellevue’s planned Bicycle Priority Corridors to facilitate continuous bicycle travel along a connected grid of safe facilities throughout the city and the region.”

- City Council (February 2015)

2016 BRIP Engagement



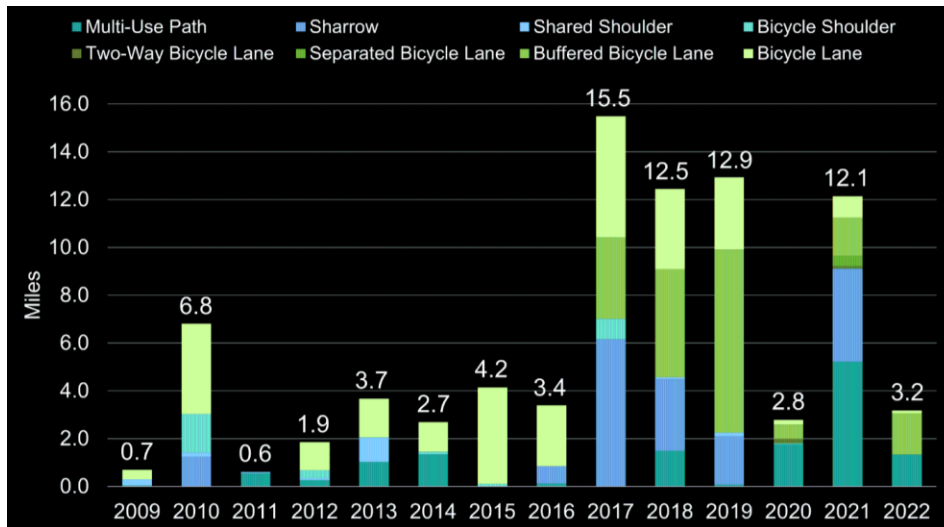
2016 Transportation Levy



Mileage of bicycle facilities installed in Bellevue:

Before passage of Levy:
17 miles

After passage of Levy:
59 miles



2017-2018 Demonstration Bikeway Engagement + Installation



We want to hear from you!
The Transportation Department is working to make Downtown Bellevue a safe, comfortable, attractive place for people to bike.

We could install Downtown's first high-comfort bikeway as a pilot project in 2018. Help pick the street and design that balances the community's priorities.

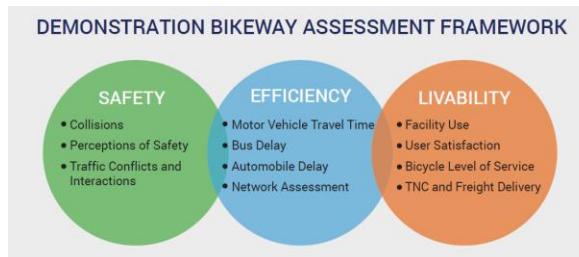
Learn about the benefits and trade-offs of concepts along four candidate streets: 108th Ave NE, 106th Ave NE, Main St, NE 2nd St.

Attend the Open House:
Thursday / November 30 / 5-7 PM
Bellevue City Hall / 450 110th Ave NE

Take the Survey:
<http://www.seawalking.com/DriveBikeDemo>
Available through December 31

For more information contact Franz Loewenherz at 425-452-4077 or floewenherz@bellevuewa.gov

Postcard Mailer



Engagement (2017)

- Robust outreach process to determine route of demonstration.

Installation (2018)

- Monitoring and evaluating outcomes.

Final Decision (2019)

- City Council approves permanent facility.

108 Ave NE Complete Streets Project



2022 MIP: Bike Level of Traffic Stress

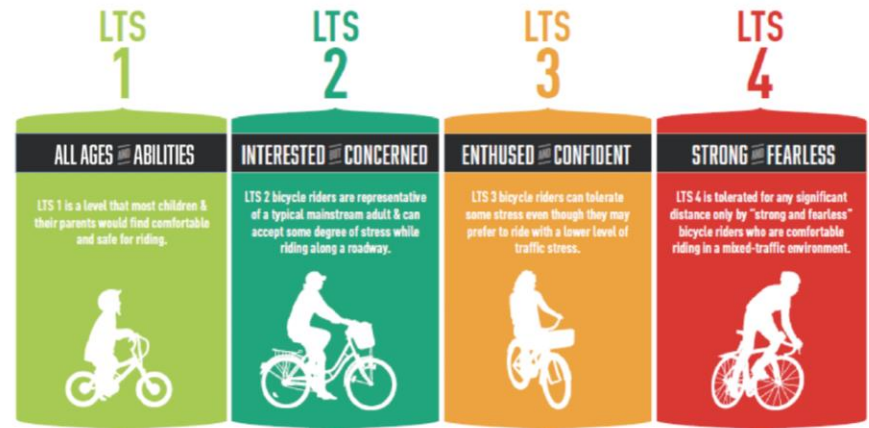
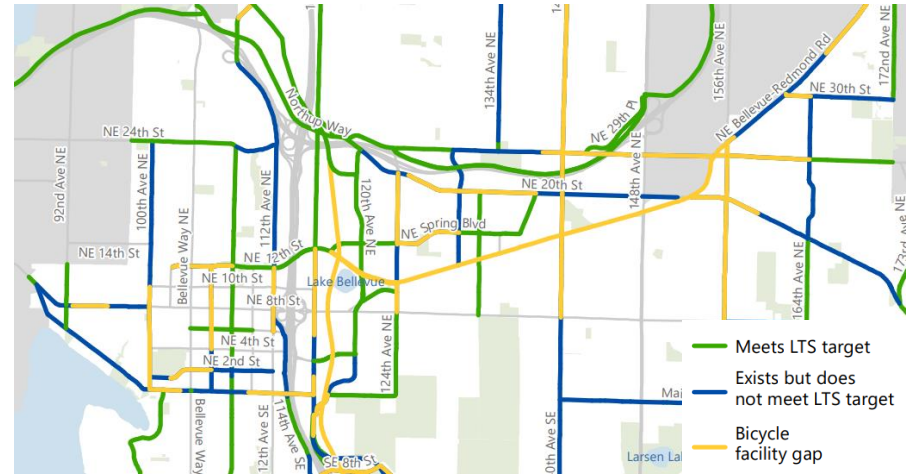


Mobility
Implementation
Plan






City of Bellevue, WA
Adopted April 18, 2022
Resolution No. 10085



CIP PW-W/B-85

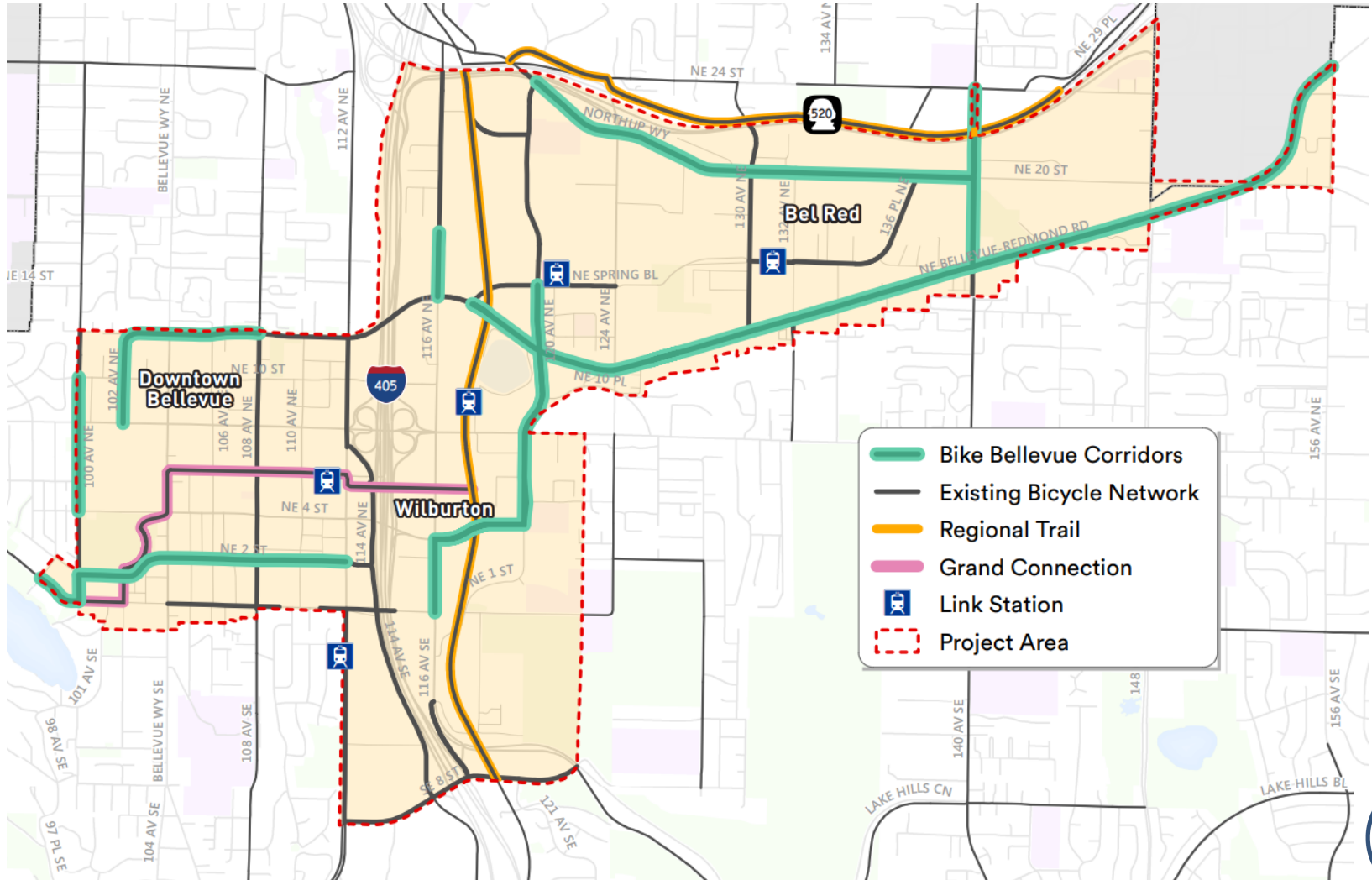
CIP description: *“Growth Corridor High Comfort Bicycle Network Implementation”*

(AKA: Bike Bellevue)

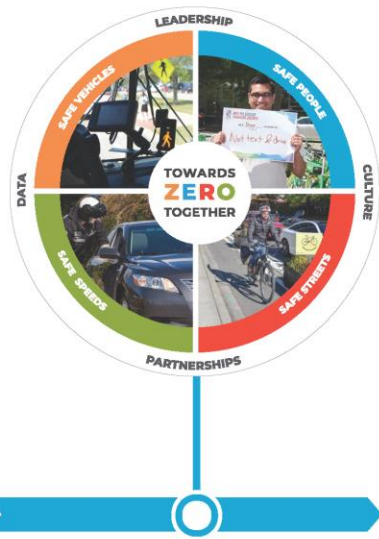
1. \$4.5 million in 2023-29 CIP.
2. Design and implement rapid-build bicycle projects on existing streets in the Downtown, Wilburton, and BelRed neighborhoods.
3. Establish grid of safe and comfortable connections to key destinations for people of all ages and abilities.



Bike Bellevue Project Area Map



Aligns with Safe System/Vision Zero



Safe System - Council Resolution (2020)



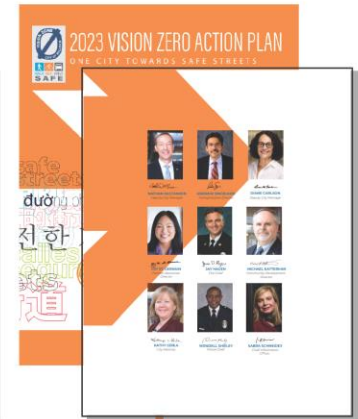
2020 Vision Zero Strategic Plan



2021 Vision Zero Action Plan



2022 Vision Zero Action Plan



2023 Vision Zero Action Plan



Bike Bellevue Principles

- 1. Safety:** Reduce the frequency and severity of crashes and minimize conflicts between roadway users through bikeway design.
- 2. Connectivity:** Implement a connected network of bicycle lanes that facilitate access to major destinations.
- 3. Comfort:** Design bicycle lanes that maximize separation between motor vehicles and people bicycling on streets with higher speed limits and more vehicle traffic.
- 4. Evaluation:** Use a data informed approach to evaluate impacts to all modes of travel and design the program to maximize the mobility of all modes.



Bike Bellevue Principles

- 5. Coordination:** Coordinate transportation and land use efforts underway in Bellevue to ensure equity and sustainability outcomes are aligned.
- 6. Partnerships:** Identify partnership opportunities to advance the implementation of bicycle projects.
- 7. Engagement:** Engage community stakeholders in setting the priorities for Bike Bellevue investments.
- 8. Equity:** Promote equity and inclusion in the development and delivery of bicycle projects.



Public Engagement - Purpose



NE 12th Street west of Bellevue Way

- Expand **community awareness** on Bike Bellevue
- Enable public to **inform project design refinements**
- Enable public to **inform project prioritization**
- **Report public input** to the Transportation Commission



Public Engagement - Strategies



NE 12th Street west of Bellevue Way

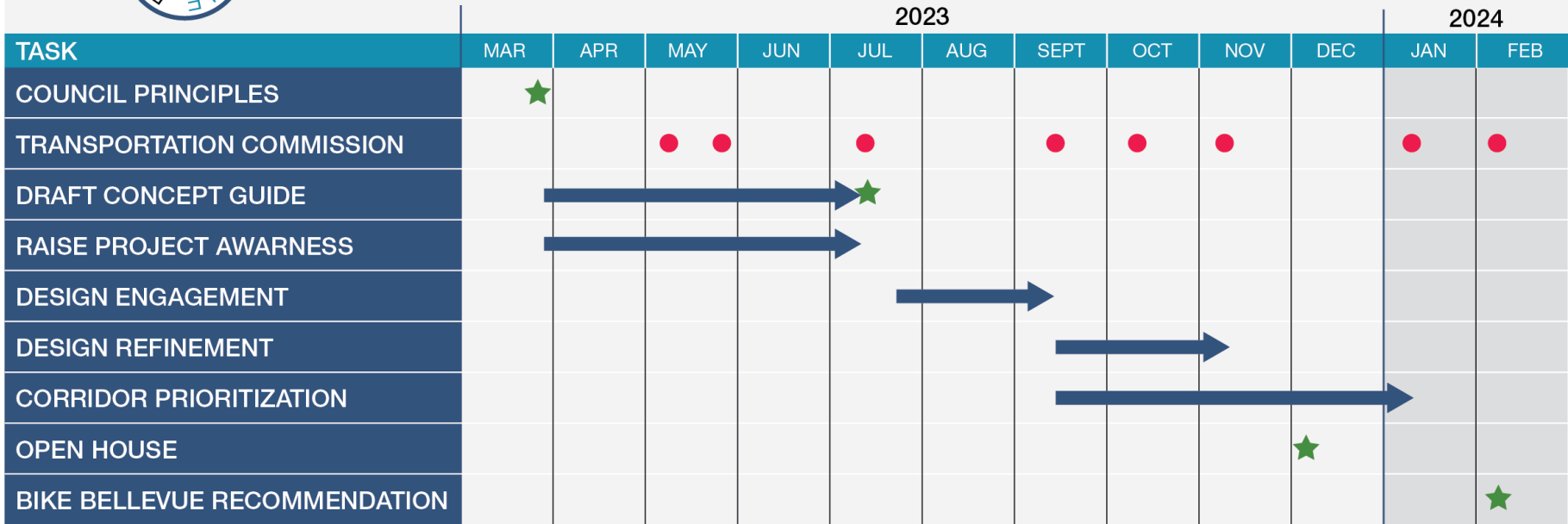
- Transportation Commission
- Focus Groups
- Online Presence
- Public Open House
- Direct Engagement and Feedback
- Mailer/Media
- Coordination/Collaboration



Bike Bellevue Timeline



BIKE BELLEVUE PROJECT TIMELINE



● MEETING ★ MILESTONE



Next Steps

1. May 25, 2023:

- Concurrence with Bike Bellevue engagement plan.
- Introduce structure of the Concept Guide.

2. July 13, 2023:

- Present DRAFT Concept Guide.

3. Q3-Q4 2023:

- Discuss corridor refinements and project prioritization.





Thank you!

Questions?



Information

- **Project Webpage**
<https://BellevueWA.gov/bike-bellevue>
- **Franz Loewenherz**
floewenherz@bellevuewa.gov or 425-452-4077