

Planning Commission

March 9, 2022

Bellevue Curb Management Plan

Presented By:

Chris Iverson | City of Bellevue



Outline for Today



**Project
Overview**



**Bellevue
Context**



**Future of the Curb
and Next Steps**

Project Team



Transportation
Community Dev.
Dev. Services
Parks
Police
CAO / CMO



Chris Iverson
Project Manager



Lauren Mattern
Nelson\Nygaard



Evan Costagliola
Nelson\Nygaard



Primus Consulting



Direction needed tonight from Planning Commission

No action needed – information only.



1

PROJECT OVERVIEW

What is Curb Management?

- From the Institute of Transportation Engineers (ITE):
 - *"Curbside Management seeks to inventory, optimize, allocate, and manage the curb space to maximize mobility, safety, and access for the wide variety of curb demands."*



Purpose and Objectives

The Curb Management Plan will establish new policies and guidance on how curb areas should be designed, maintained, and operated over time.

- Establish a **vision and values framework** to root curb decisions and policies
- Establish a contextualized **prioritization framework for curb use**
- Analyze options to establish a **dedicated curb program** for various curbside uses
- Develop a **curbside playbook** of tools needed to deliver better curb outcomes
- Build an **organizational and staffing framework** to implement the Curb Management Plan

Curb Management Plan: Why Now?

- Rapid growth in Bellevue's "Urban Core" affects curb designs & uses.
- Increase of "new mobility" services, e-commerce, growing multimodal needs are placing burdens on curb.
- Responses to COVID-19 pandemic have inspired innovative strategies in curbside areas.



The curb as the street shoreline



Parking



Commercial Freight Activity



Passenger Load & Unload



Seating & Dining



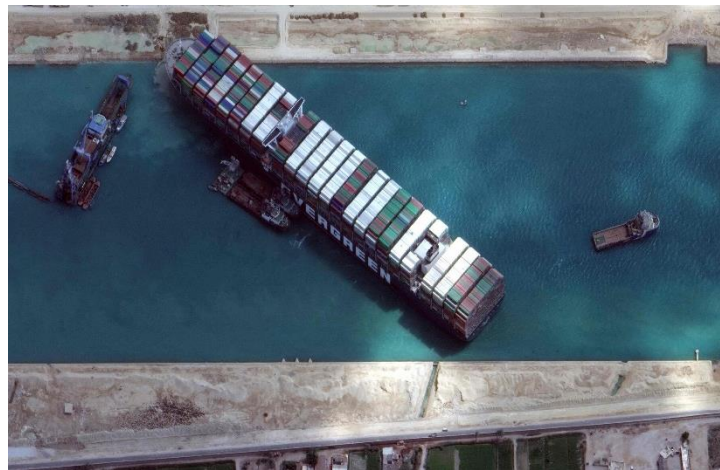
Placemaking & Activation



Greenery

The curb as the street shoreline

- Unorganized structures can lead to poor outcomes.





2

BELLEVUE CONTEXT

History

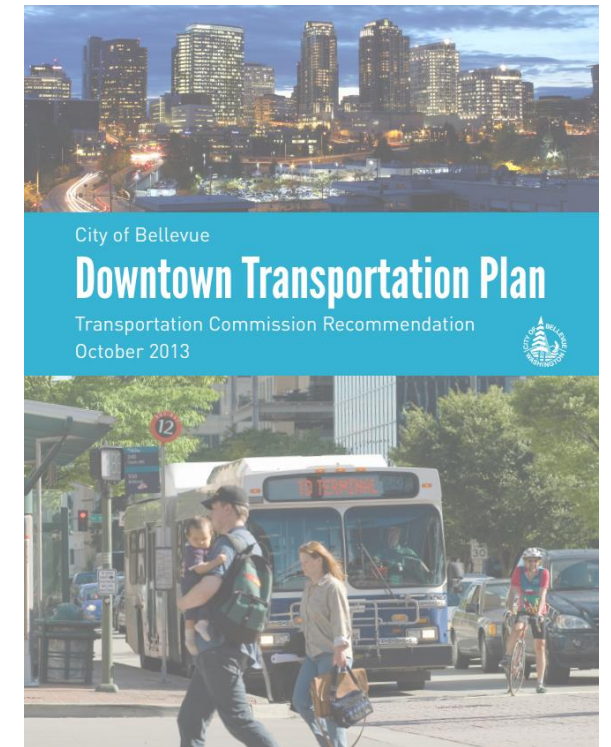
Pre-CMP Activity

- **1996:** Bellevue formalizes on-street parking in downtown Bellevue (passage of Ordinance 4927)
- **2014:** Bellevue Downtown Transportation Plan
- **2015:** King County begins regulating TNCs
- **2019:** DOE-funded partnership with UW's Urban Freight Lab
- **2020:** Rapid curb deployments
 - Al Fresco Dining Program
 - 3-Minute "Food Priority Pick-up Zone"
 - Transportation for America Smart Cities Collaborative and 106th Ave Curbside Pilot project
- **2020:** Environmental Stewardship Plan includes strategy focused on curb management



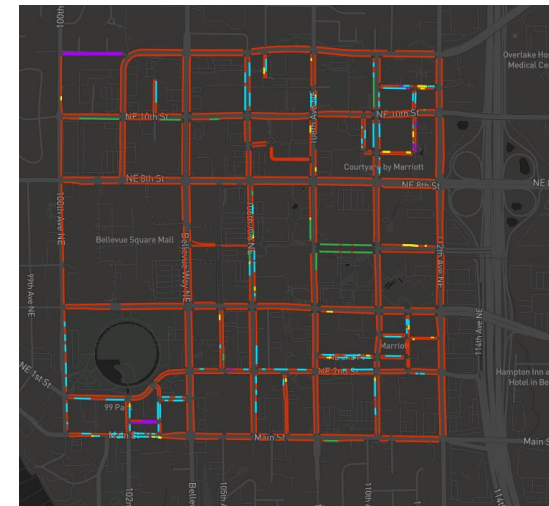
Curb Management in City Plans

- Downtown Transportation Plan (2013-2014)
 - Sections covering on-street parking, other curb uses
 - DT Subarea Plan policies speak to curb uses
- Smart Mobility Plan (2018)
 - Strategies to implement curb technologies
- Environmental Stewardship Plan (2020)



Curb Management in Bellevue Today

- Curb areas are managed on an ad-hoc basis.
- Parking enforcement is very light (i.e., contracted in downtown).
- Decisions in the right-of-way at the curb are oftentimes made in isolation.
- No curb operation guidance during development review.
- Curb interventions have been focused on pilot projects.



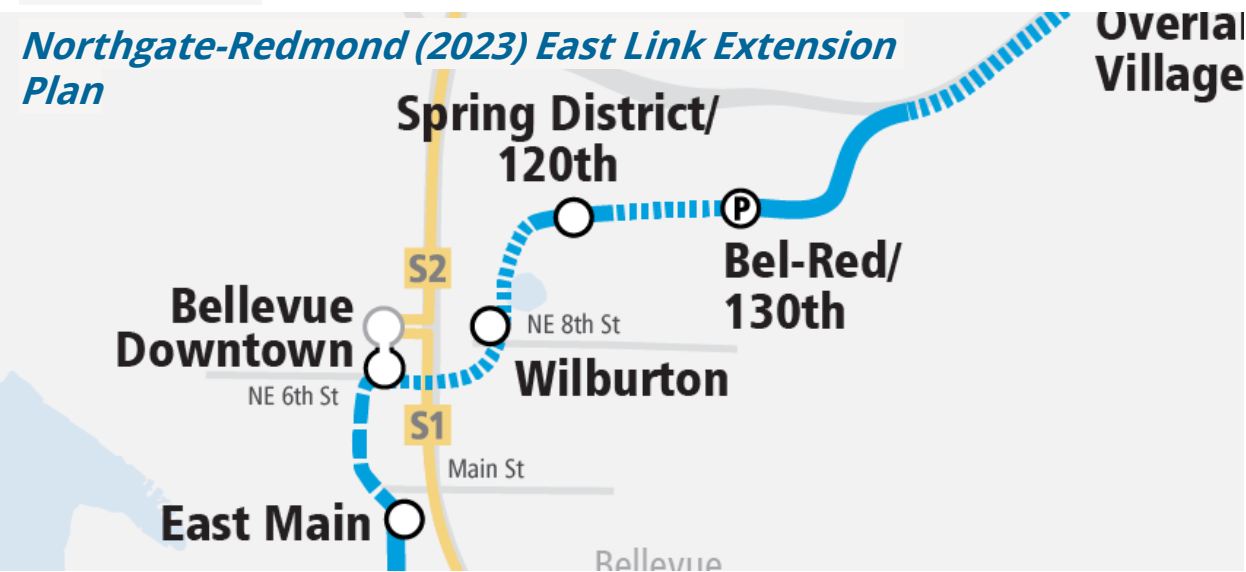
The Future

An Increasingly Urban Bellevue



New Bellevue Downtown Link Station Construction

Northgate-Redmond (2023) East Link Extension Plan



Bikeshare near DC Metro Station



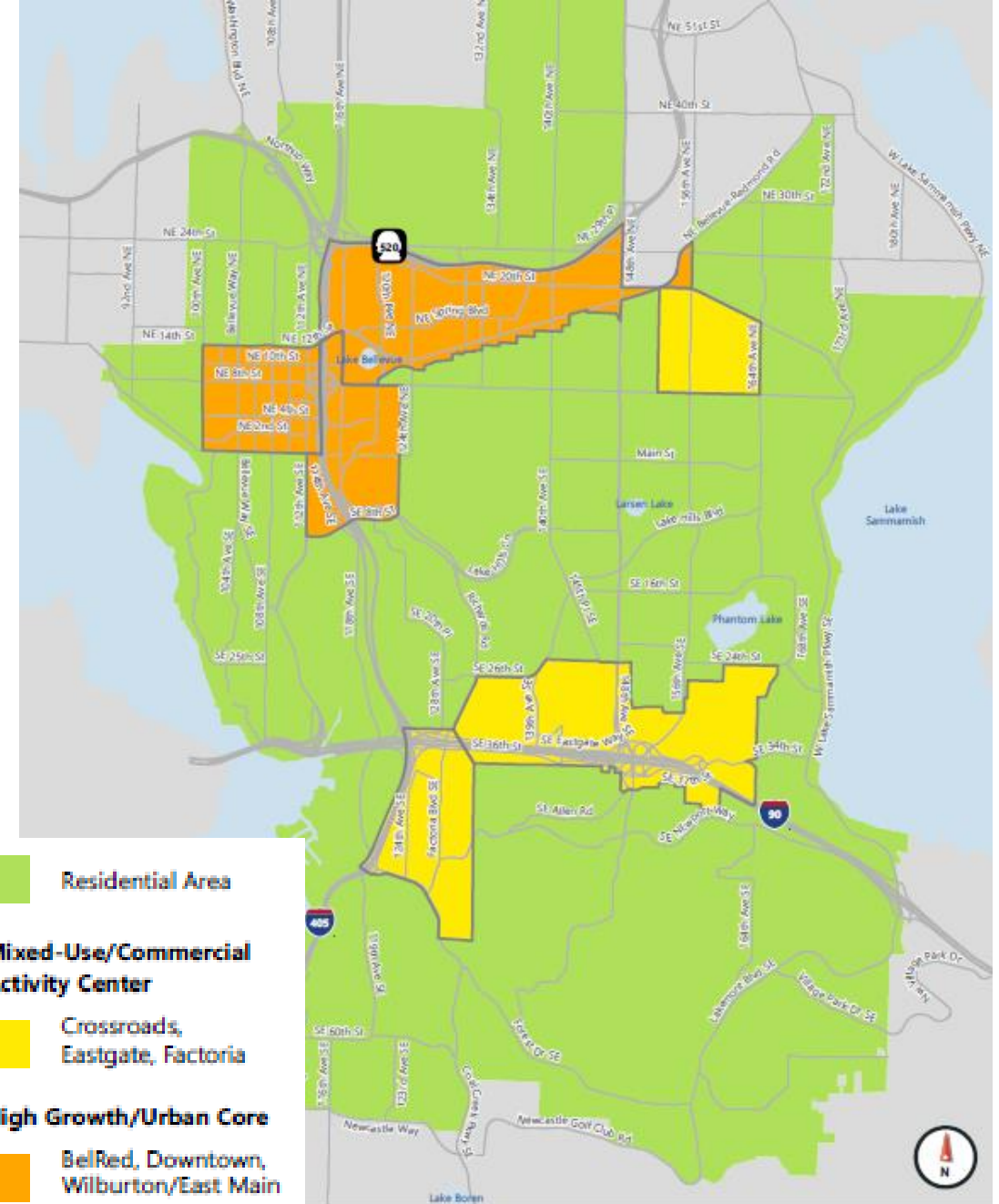
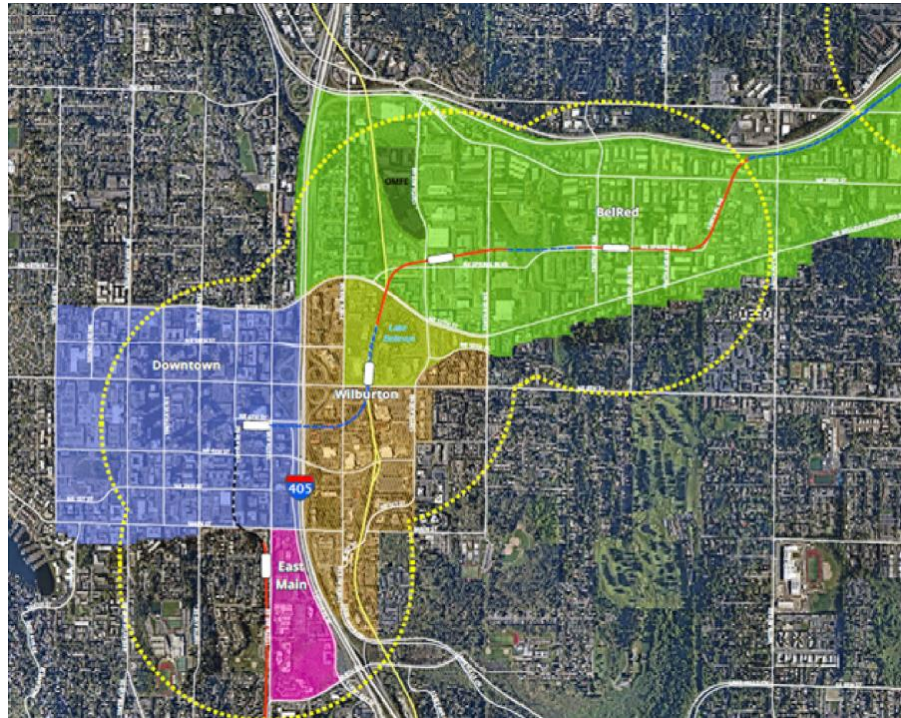
Curb space near Capitol Hill Link Station reserved for passenger pickup/dropoff



Primary Study Area

"Growth Corridor" consists of neighborhoods within PMA Type 1, including:

- Downtown
- Wilburton
- East Main
- BelRed

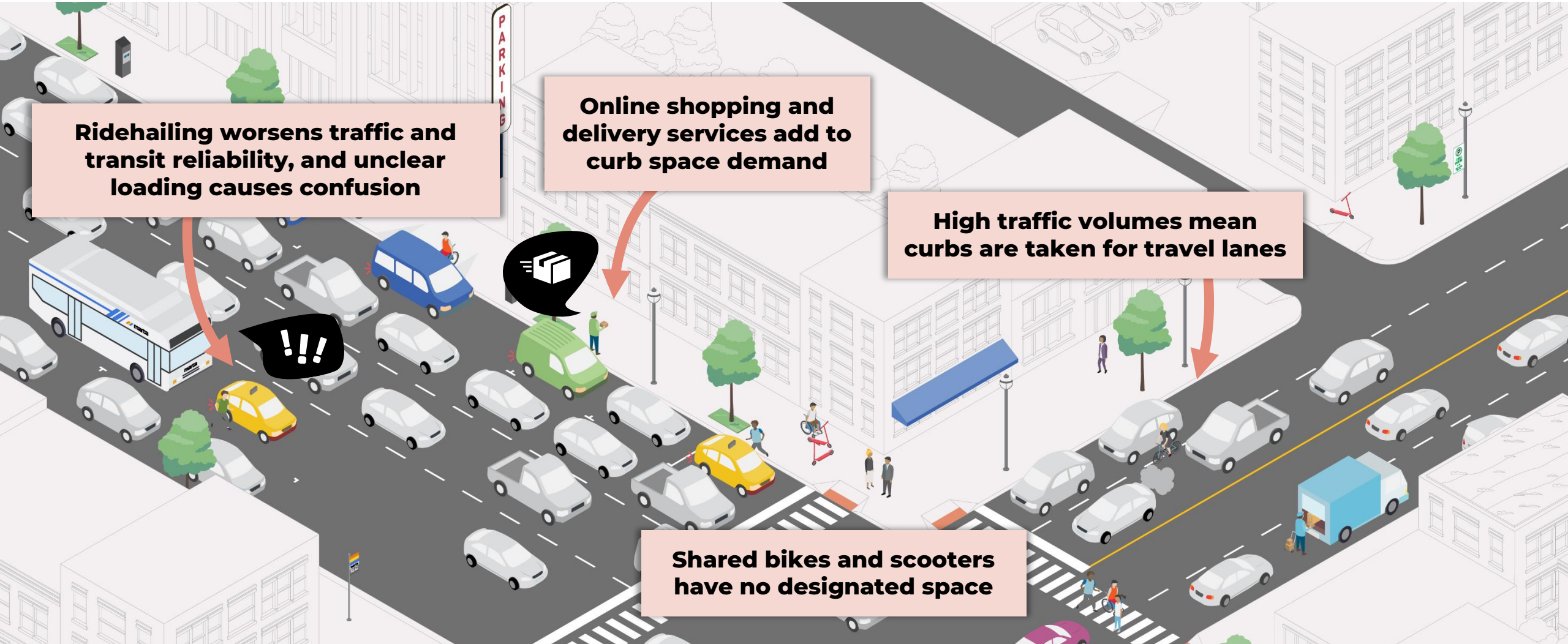




3

FUTURE OF THE CURB AND NEXT STEPS

What we often see today:



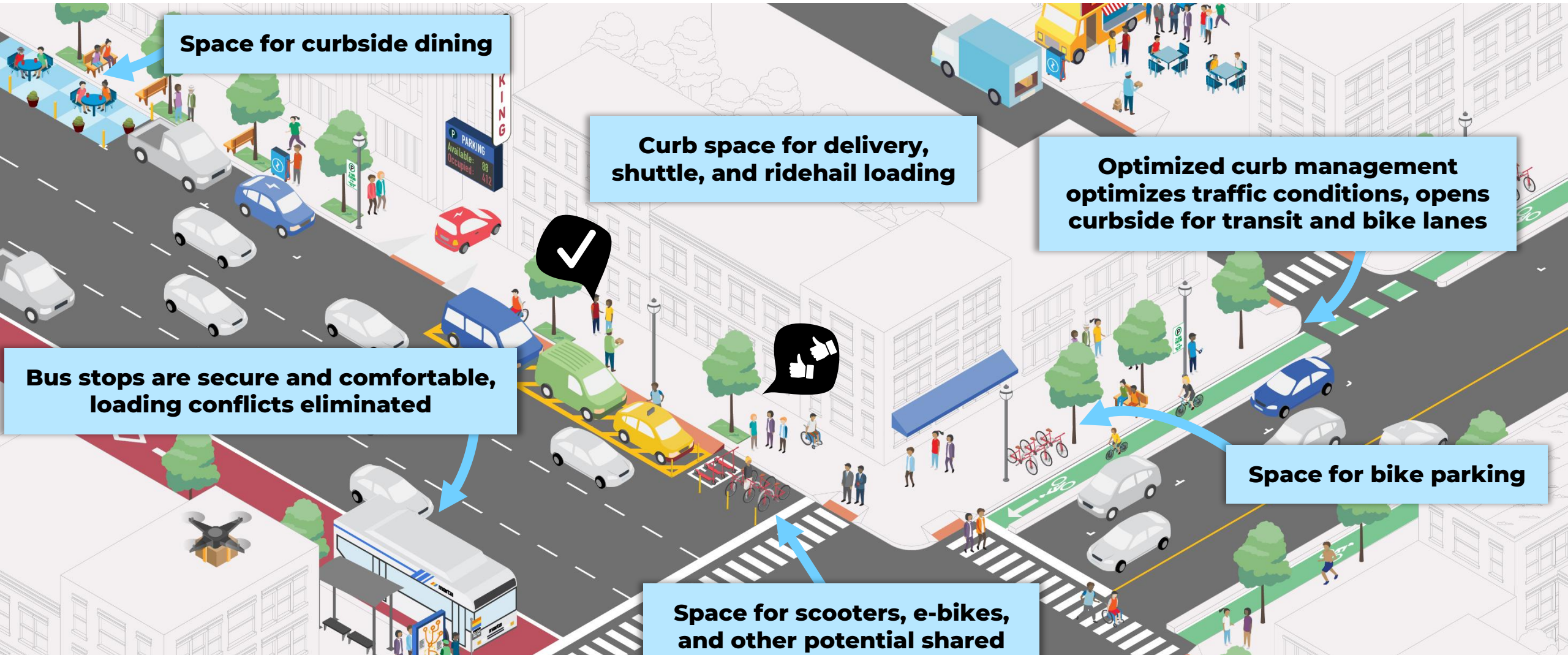
Ridehailing worsens traffic and transit reliability, and unclear loading causes confusion

Online shopping and delivery services add to curb space demand

High traffic volumes mean curbs are taken for travel lanes

Shared bikes and scooters have no designated space

What we hope to see tomorrow:



Space for curbside dining

Curb space for delivery, shuttle, and ridehail loading

Optimized curb management optimizes traffic conditions, opens curbside for transit and bike lanes

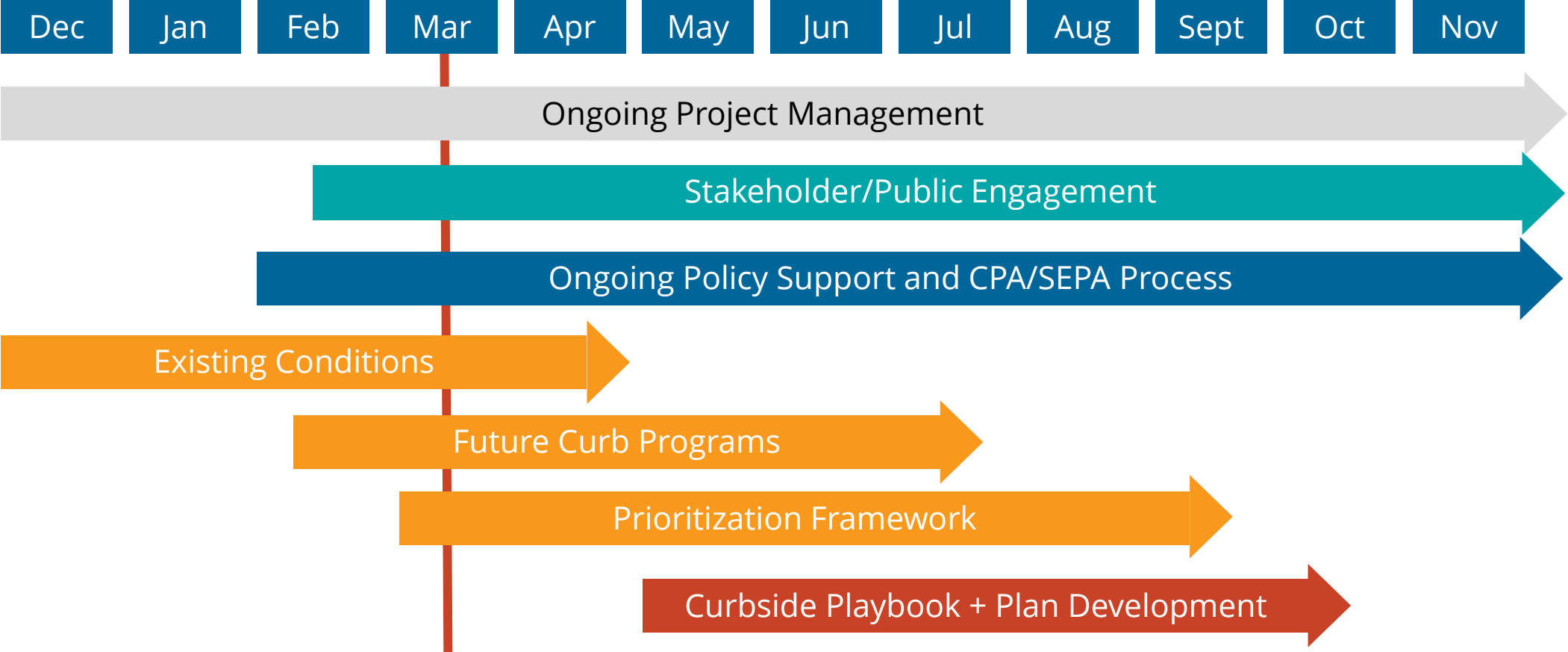
Bus stops are secure and comfortable, loading conflicts eliminated

Space for bike parking

Space for scooters, e-bikes, and other potential shared mobility services



Proposed CMP Schedule



* Schedule of CMP approval subject to change



Planned Engagement



Inform

Engaging Bellevue
Information materials
Project updates



Consult

EB.com Survey
Curb Summit
Stakeholder interviews
Stakeholder focus groups



Collaborate

Council & Commission
Meetings

CMP – Policy Approach

- **Comprehensive Plan policies will be created in support of curb management.**
 - The CMP will include a Comprehensive Plan Amendment (CPA) process to add, modify, and remove policies to better align with changed conditions.
- **Potential policy concepts include:**
 - Added support for curb placemaking and activation functions, like curbside dining and parklets
 - Added support for developing curbside mobility hubs
 - Added support for curb management technologies and innovations
 - Amended language that addresses new mobility functions, such as providing deliberate accommodation for rideshare services, freight providers, and micromobility services
 - Added support for the creation of a dedicated curb management program

Milestones

■ Previous Engagements

- Transportation Commission = January 13
- City Council = February 14
 - Council provided direction to have TR Commission develop Comp Plan policies + content for the CMP

■ Upcoming Engagements

- Planning Commission meeting = Today
- Next Transportation Commission meeting = Tomorrow (Thursday, March 10)
- Focus Groups = Feb & March 2022
- Curb Summit = Tuesday, March 29

■ Next Planning Commission meeting

- June 2022 (tentative)



Thank You

Chris Iverson | *City of Bellevue* | civerson@bellevuewa.gov

