



Comprehensive Plan Periodic Update : Capital Facilities, Utilities, and Urban Design and the Arts Policies

Thara Johnson, Planning Manager
Kate Nesse, Senior Planner

Community Development

Planning Commission | March 27, 2024



Direction

Review policies in:

- Urban Design & the Arts
- Utilities
- Capital Facilities

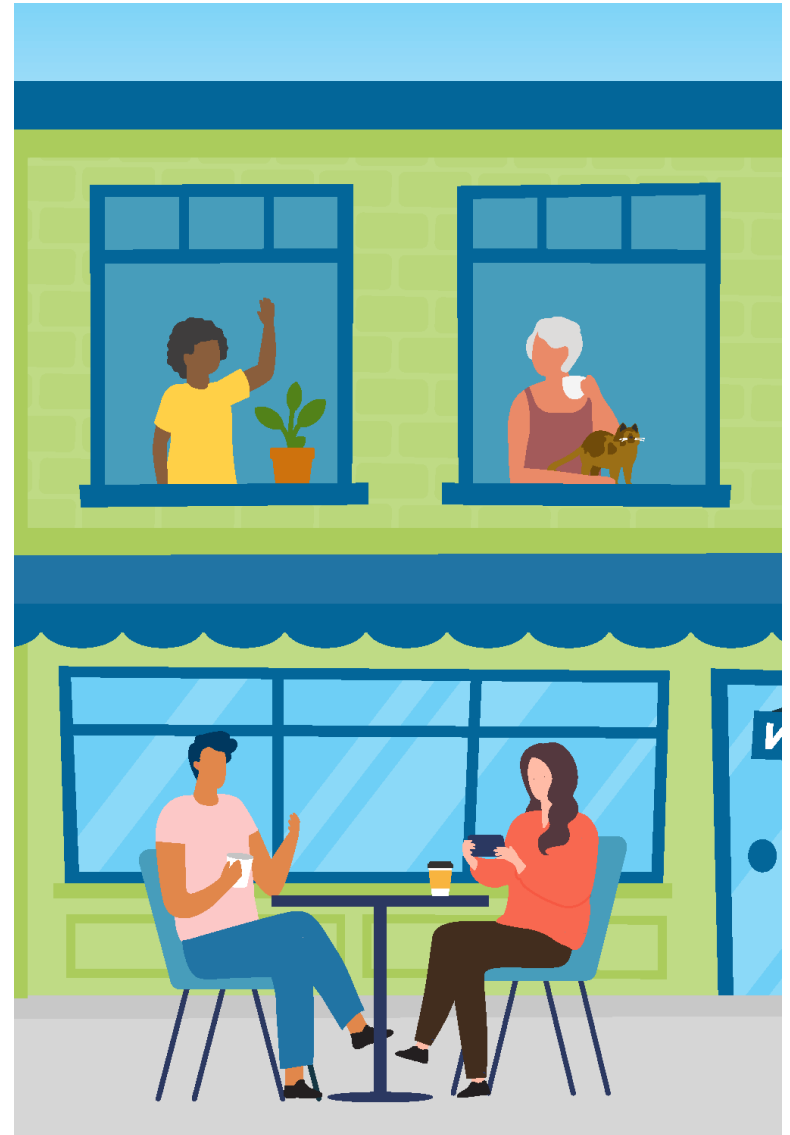
Direction on issues to address before moving to final draft stage





Agenda

1. Background
2. Recommended Policy Changes
 - Urban Design & the Arts
 - Utilities
 - Capital Facilities
3. Next Steps



Background

Date	Elements	
Jan 24	Community Engagement; Economic Development	✓
Feb 14	Land Use & Future Land Use Designations	✓
Feb 28	Future Land Use Map	✓
Mar 13	Neighborhoods; Climate & Environment; Parks (rec from PRSB)	✓
Mar 27	Capital Facilities; Utilities (rec from ESC); Urban Design & the Arts (rec from AC)	
Apr 3	Housing; Human Services (rec from HSC);	
Apr 10	Transportation (rec from TC)	

Background

Date	Elements
May 1	Release of Complete Comprehensive Plan Draft
May 8	Community Comments Addressed; Future Land Use Map Updates, PC Comments Addressed
May 22	Subarea Plan Policies; Follow-up
June 20	Public Hearing I
June 26	Public Hearing II; Recommendation

Tentative



Urban Design & the Arts



Major Changes

- Reorganization of the element around geographic areas
- Policy simplification & clarification
- Addition of policies to:
 - Address universal design
 - Support the BelRed Arts District
 - Promote arts and culture in Bellevue
 - Support the recognition of historic resources and landmarks
 - Tribal coordination



Arts Commission Recommendation



Arts Commission unanimously recommended the amendments to policies UD-28, UD-29 & UD-48 to UD-67 in the Urban Design & the Arts element.

(policies noted with an asterisk on subsequent slides) *

Reorganization & Clarification

- Citywide Character
- Residential Neighborhoods
- Downtown, Commercial and Mixed Use Areas
- Arts & Culture
- Design Quality - Downtown, Commercial, & Mixed-Use Developments
 - Site and Building Design
 - Downtown, Commercial and Mixed-Use Developments
 - Signs and Wayfinding
 - Vegetation and Landscaping
- Public Space
 - Public Places
 - Sidewalks and Trails
- Landmarks and Historic Resources

85 policies

Recommended Revision

- Citywide Public Experience
- Mixed Use Areas
- Mixed Use Center
- Neighborhood Center Design
- Street and Corridor Experience
- Pedestrian Experience
- Sustainable Environmental Design
- Arts and Culture
- Landmarks and Historic Resources

67 policies

Universal Design

Universal design is creating an environment such as a streetscape that everyone can use regardless of age or ability.

Policy Number	Recommended Policy
UD-11	Incorporate universal design principles in the design of indoor and outdoor spaces to ensure these environments are usable to the greatest extent possible by all people regardless of age and ability.

Support BelRed Arts District

Policies added to increase and structure support for the development of the BelRed Arts District

Policy Number	Recommended Policy
UD-28 *	Catalyze the activation of BelRed Arts District as a unique destination focused on arts, culture, innovation, and nightlife.
UD-29 *	Support the organization and visibility of the BelRed Arts District, increase the number of affordable creative spaces and foster connection and collaboration with the BelRed community in accordance with the BelRed Arts District Implementation Plan.



Promote Arts & Culture

Several new policies promoting sustainability, arts and cultural activities in Bellevue

Policy Number	Recommended Policy
UD-46	Incorporate interpretative or educational materials to highlight sustainable design components.
UD-57 *	Encourage and enhance arts and cultural opportunities within Neighborhood Centers.
UD-58 *	Use art treatments, such as box wraps, where it can extend the usable life and deter vandalism of city owned equipment and facilities.
UD-60 *	Support partnerships and spaces for cross-cultural programming that contribute to intercultural engagement, learning, and exchange.

Landmarks & Historic Resources

Many new policies supporting the recognition of historic and cultural resources in Bellevue

Policy Number	Recommended Policy
UD-62 *	Consider establishing a local preservation program to increase historic resources protections.
UD-63 *	Explore opportunities for preservation, rehabilitation, and adaptive reuse of historically significant sites and structures.
UD-64 *	Identify and protect historic and cultural sites and structures that may be acutely sensitive to climate hazards.

Landmarks & Historic Resources

Continued...

Policy Number	Recommended Policy
UD-65 *	Establish a process of conducting historic surveys that identify, document, and evaluate historic properties.



Tribal Coordination

Support coordination with tribes on historic & cultural resources

Policy Number	Recommended Policy
UD-65 *	Establish a process of conducting historic surveys that identify, document, and evaluate historic properties.
UD-66 *	Coordinate with affected tribes and agencies regarding planning and development activities that may impact significant natural, cultural, or archaeological resources.
UD-67 *	Work with tribes and other historically marginalized or underserved communities to raise awareness of and protect historically and culturally valuable resources to these communities.

Community Feedback: Urban Design & the Arts



- Strong support for
 - BelRed Arts District
 - Community-building programs
 - Universal design
- Students desire youth-focused programming & gathering spaces
- Some people asked for policies regarding:
 - Performing arts
 - Contribution of older adults & LGBTQIA+ to culture





Utilities



Major Changes

- City-managed utility policies updated to reflect current practices & clarified
- Non-city-managed utility policies reorganized
- Addition of policies to:
 - Address climate change & support conversion to clean energy



Environmental Services Commission Recommendation



Environmental Services Commission
unanimously recommended the
amendments to policies UT-1 to UT-44 in
the Utilities element.

(policies noted with an asterisk on subsequent slides) *

Updated for Current Practice

Updates to align policies with required or recommended practices and clarify policy intent.

Policy Number	Recommended Policy
UT-13 *	Require Low Impact Development principles to minimize impervious surfaces and native vegetation loss on all infrastructure improvement projects.
UT-26 *	Use a public review process in the selection and approval of sites for any disposal facility, to study and consider sensitivity to aesthetics, equitable distribution of burdens and benefits, health effects and the environment.

Non City-Managed Utilities

- General Utility System
- Utility Coordination
- Hazardous Waste
- Solid Waste
- Wastewater Utility
- Storm & Surface Water Utility
- Water Utility

- Non City-Managed Utilities
 - General Non City-Managed Utilities
 - Non City-Managed Utilities - Additional Wireless Communication Facilities
 - Non City-Managed Utilities - Additional Electrical Facilities Policies

Recommended Revision

- General Utility System
- Utility Coordination
- Hazardous Waste
- Solid Waste
- Wastewater Utility
- Storm & Surface Water Utility
- Water Utility

- General Non City-Managed Utilities
- Telecommunication Utility
- Electric Utility

Address Climate Change

Add policies to address climate change and the conversion to clean energy.

Policy Number	Recommended Policy
UT-59	Facilitate the conversion away from fossil fuels to cost-effective and environmentally sensitive technologies and energy sources.

Address Climate Change

Continued....

Policy Number	Recommended Policy
UT-80	Update utility agreements, engage partnerships, and develop policy to require timely planning and investments to ensure sufficient grid capacity for electrification and decarbonization.
UT-82	Work with Puget Sound Energy to improve the safety and reliability of power infrastructure vulnerable to climate change.

Community Feedback: Utilities



- Strong support for
 - Move away from fossil fuels
 - Climate impacts
- Some people asked for policies regarding:
 - Closer cooperation with or regulation of PSE
 - Maintaining competition between internet providers
 - Planning for emergencies





Capital Facilities



Major Changes

- Addition of policies to:
 - Equitable impacts of public facility siting
 - Respond to climate change
 - Engage impacted communities
 - Support increasing sustainability of city facilities



Equitable impacts of public facilities



Changes to ensure benefits and burdens of public facility access and siting are equitably distributed.

Policy Number	Recommended Policy
CF-2	Provide affordable and equitable access to capital facilities and public services to all communities, especially the historically underserved. Prioritize investments to address disparities.



Respond to Climate Change

Several policies were added to address the causes and impacts of climate change on City facilities.

Policy Number	Recommended Policy
CF-16	Plan capital investments to prepare to withstand, rapidly recover from, and promote community resiliency against climate impacts, including extreme heat, wildfire, smoke, extreme precipitation, drought, and flooding.
CF-17	Plan capital investments to support efficient, equitable and environmentally sustainable outcomes through facility condition assessments, including consideration for climate resilience, risks, and the present cost of non-investment.

Respond to Climate Change

Continued...

Policy Number	Recommended Policy
CF-30	Consider climate change, economic, equity, and health impacts when siting and building essential public services and facilities.



Engage Impacted Communities

Policy added to engage communities impacted by public facility siting.

Policy Number	Recommended Policy
CF-18	Consider climate change, economic, equity, and health impacts when siting and building essential public services and facilities.

Sustainability of City Facilities

Several policies were added to move city facilities to a more sustainable operation.

Policy Number	Recommended Policy
CF-19	Reduce solid waste at capital facilities through a comprehensive program and purchasing policies that promote processing and recovery of recyclable materials, compostable food and yard waste, and disposable items to promote a circular economy.
CF-20	Incorporate Low Impact Design (LID) standards and operational strategies into all relevant capital projects and ongoing maintenance.



Sustainability of City Facilities

Continued....

Policy Number	Recommended Policy
CF-21	Reduce energy use and greenhouse gas emissions in municipal operations and facilities by supporting renewable energy, electrification, and energy conservation measures.
CF-22	Require all capital projects to meet or exceed green certification standards for capital facilities unless determined infeasible by interdepartmental review.
CF-23	Ensure that all electric vehicle charging infrastructure sited on city property is designed to charge a wide array of vehicles and is equitably distributed throughout Bellevue.

Community Feedback: Capital Facilities



- Strong support for
 - Environmental sustainability considerations
- Desire for the City to go further in its commitment to sustainable practices
- Some people asked for policies regarding:
 - Siting facilities close to growth
 - New community centers





Direction

Review policies in:

- Urban Design & the Arts
- Utilities
- Capital Facilities

Direction on issues to address before moving to final draft stage





Next Steps

Review these three elements again at final draft stage

- Suggested changes
- Suggested changes based on community input regarding these elements

