

King County Metro RapidRide K Line

Overview and Guiding Principles

Andrew Singelakis
Transportation

June 11, 2024



Direction

Direct staff to use Bellevue RapidRide K Line Guiding Principles to represent local needs and ensure that the city's transit interests are effectively represented in K Line planning.



Agenda

1. Council-Adopted Policies
2. Draft Guiding Principles

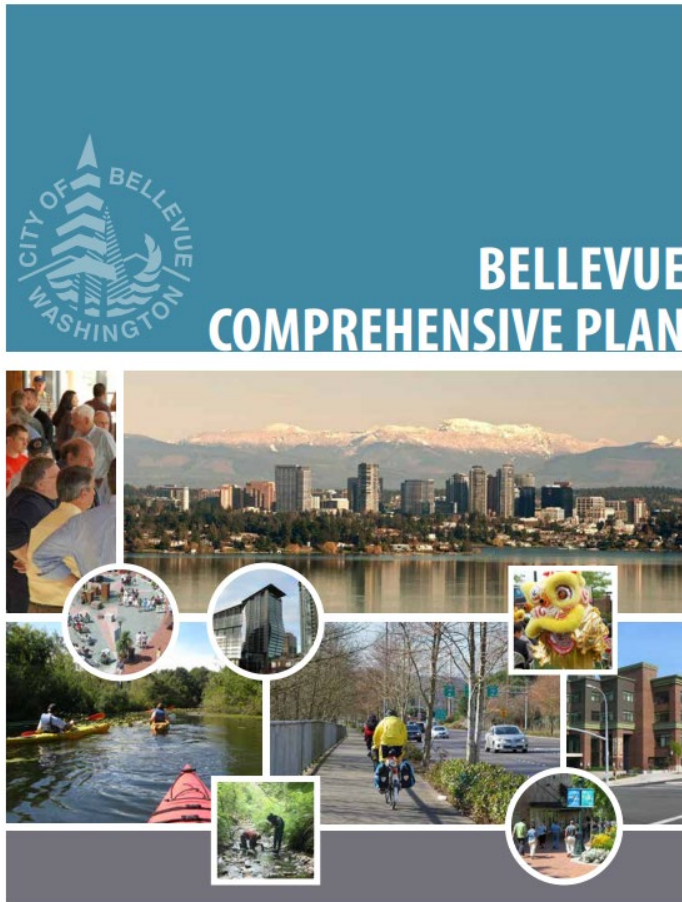


Council-Adopted Policies

“The only way to **efficiently** serve multicentered cities like Bellevue is with routes that are **frequent** and that make it **easy to connect** from one route to another at **attractive** and **safe** connection facilities.”



Council-Adopted Policies



“Support planned growth and development with a **bold transit vision** that provides **efficient, useful, attractive service** for most people, to most destinations, most of the time, serving **maximum ridership.**” (TR-68)

Council-Adopted Policies

“Take advantage of light rail, bus rapid transit and the Frequent Transit Network that form the spine of our transit network to **support growth.**”



Guiding Principles

Topic Areas

- Convenient
- Attractive
- Direct
- Regionally connected
- Efficient
- Growth-oriented
- Community informed
- Safe
- Environmentally sustainable



Direction

Direct staff to use Bellevue RapidRide K Line Guiding Principles to represent local needs and ensure that the city's transit interests are effectively represented in K Line planning.



Draft Guiding Principles 1-2

- 1. Convenient:** Make transit the logical choice for the largest possible share of trips. RapidRide K Line stations will be located where most people have easy access to service. The RapidRide K Line will help people reach more destinations in less time by minimizing wait times and improving connections.
- 2. Attractive:** Design for high ridership, maximizing the value of public investment. Ensure the project is competitive for federal investment.



Draft Guiding Principles 3-4

3. **Direct:** Minimize deviations from the shortest path to provide the fastest service between activity centers. The RapidRide K Line will directly connect Eastgate Park and Ride, downtown Bellevue, and Totem Lake Transit Center in Kirkland. Route deviations are avoided unless they serve significantly more riders.
4. **Regionally connected:** Provide access to as many regional locations as possible by connecting to other transit services. The RapidRide K Line will operate frequently and provide connections with the 2 Line, Stride bus rapid transit, RapidRide B Line, and local transit routes.



Draft Guiding Principles 5-7

5. **Efficient:** Improve the person-throughput of Bellevue's street network. The RapidRide K Line will provide high-capacity transit, increasing the number of people that can travel on Bellevue's street network.
6. **Growth-oriented:** Increase mobility options to support Bellevue's growing and diverse population.
7. **Community informed:** Support equitable and meaningful community engagement. The RapidRide K Line will be developed through a robust public engagement strategy that prioritizes outreach to historically under-represented populations.

Draft Guiding Principles 8-9

8. **Safe:** Provide a safe trip for transit users including at the bus stop and when traveling to and from the stop. The RapidRide K Line will support Bellevue's Safe System approach to Vision Zero.
9. **Environmentally sustainable:** Aim to reduce greenhouse gas emissions by designing an attractive transit service that people choose to ride over driving alone. The RapidRide K Line's blend of high-frequency, speed and convenience will be more attractive to Bellevue residents when deciding what mode to use and should result in less greenhouse gas emissions per capita.

