



City of Bellevue

King County State of the Court and Bellevue Community Court Update

Presented By:

Judge Rebecca Robertson | King County Chief Presiding Judge

Stephen Penner | Chief Prosecutor, City Attorney's Office

Craig A. Fritz | Probation Manager, Parks & Community Services

June 24, 2025

A blue circle is positioned at the top-left corner of the slide. A thin blue line extends horizontally from the circle across the top of the slide, and another thin blue line extends vertically from the circle down to the bottom of the slide, forming an L-shape that frames the text.

Information Only

AGENDA



King County District Court State of the Court



Bellevue Community Court Update



Closing / Questions



City of Bellevue

King County District Court State of the Court - 2025

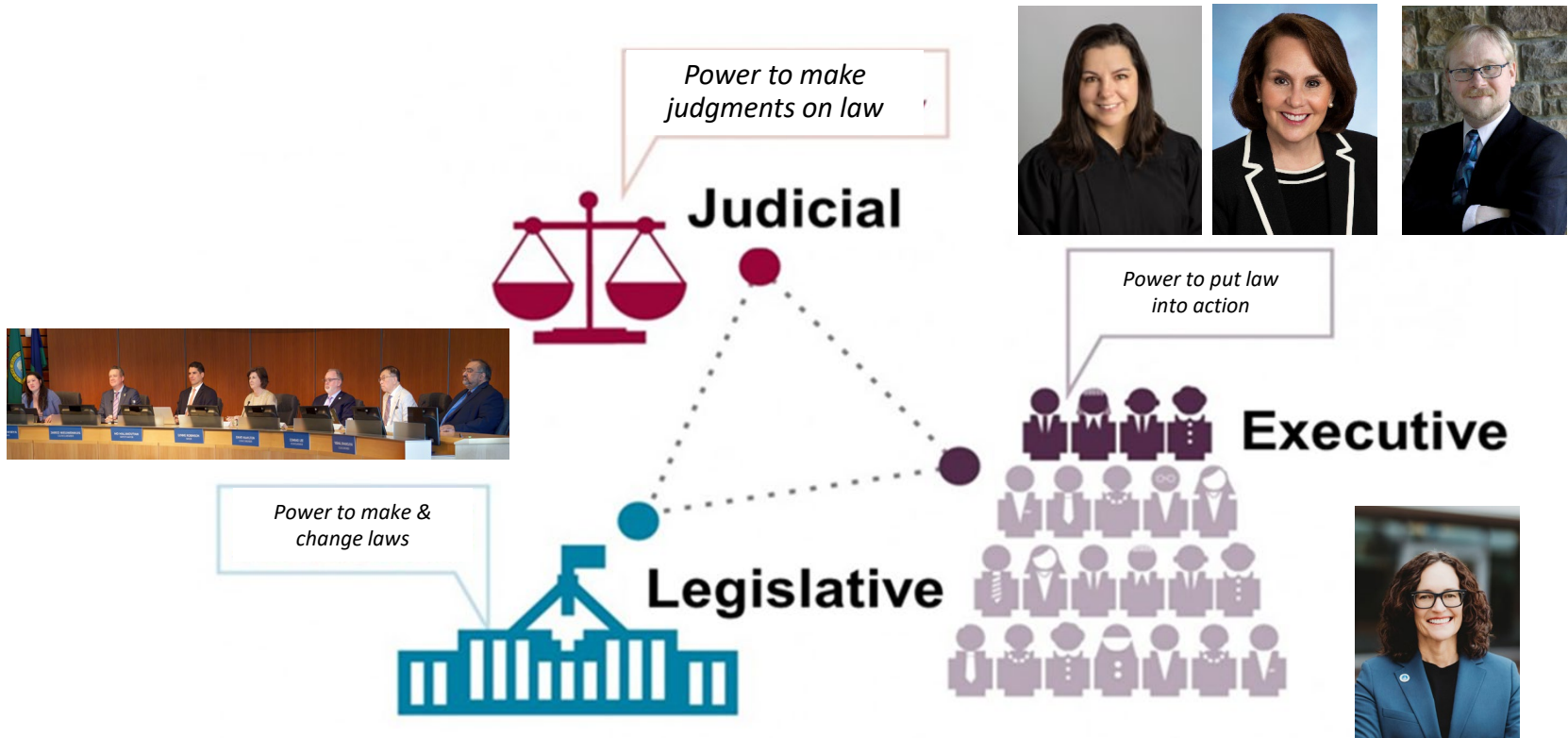


Judge Rebecca C. Robertson
Chief Presiding Judge

Bellevue City Council
June 24, 2025



Bellevue Branches of Government



Judicial Leadership

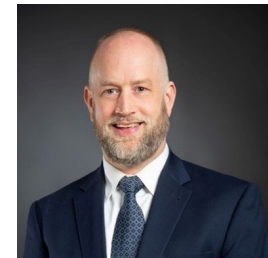
Executive Committee

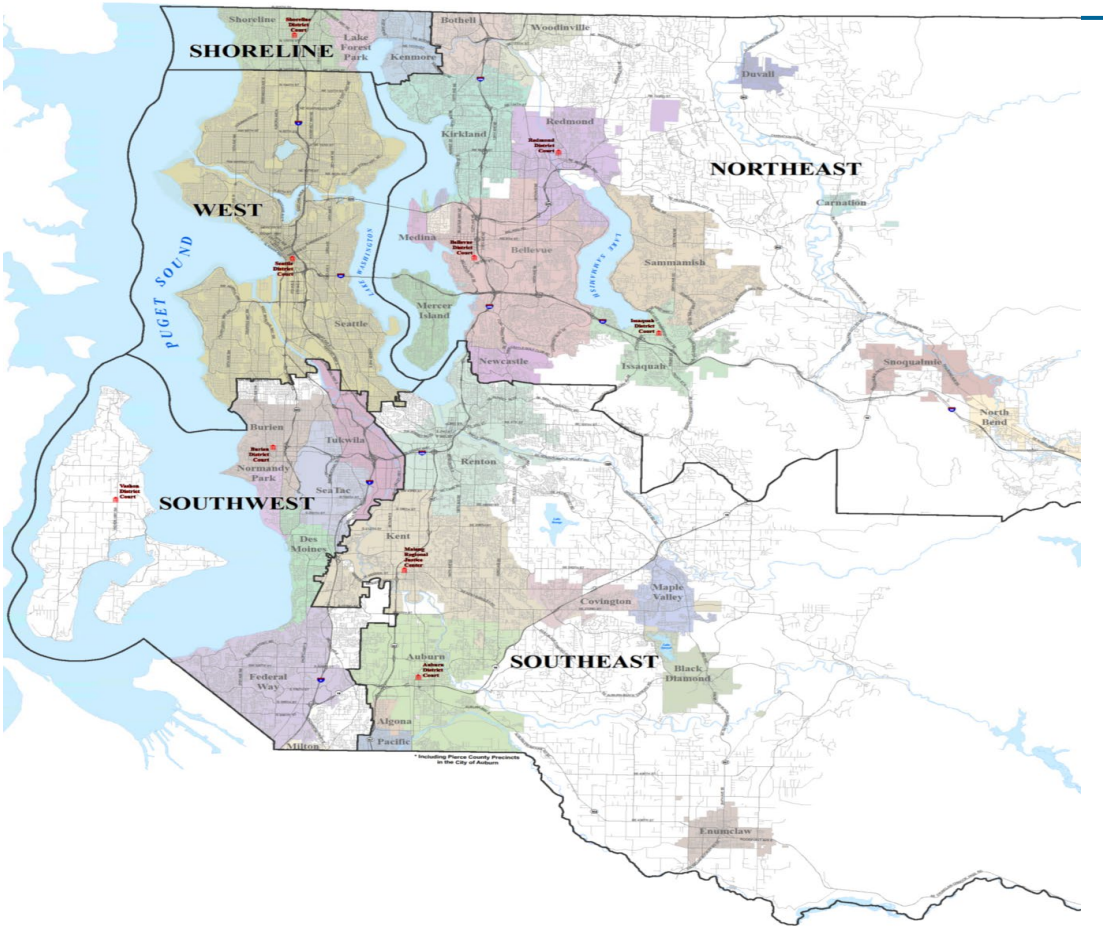
Chief Presiding Judge – Judge Rebecca C. Robertson

Asst. Chief Presiding Judge – Judge Corinna Harn

Division Presiding Judges

- East – Judge Lisa O'Toole
- South – Judge Brian Todd
- West – Judge Kristin Shotwell



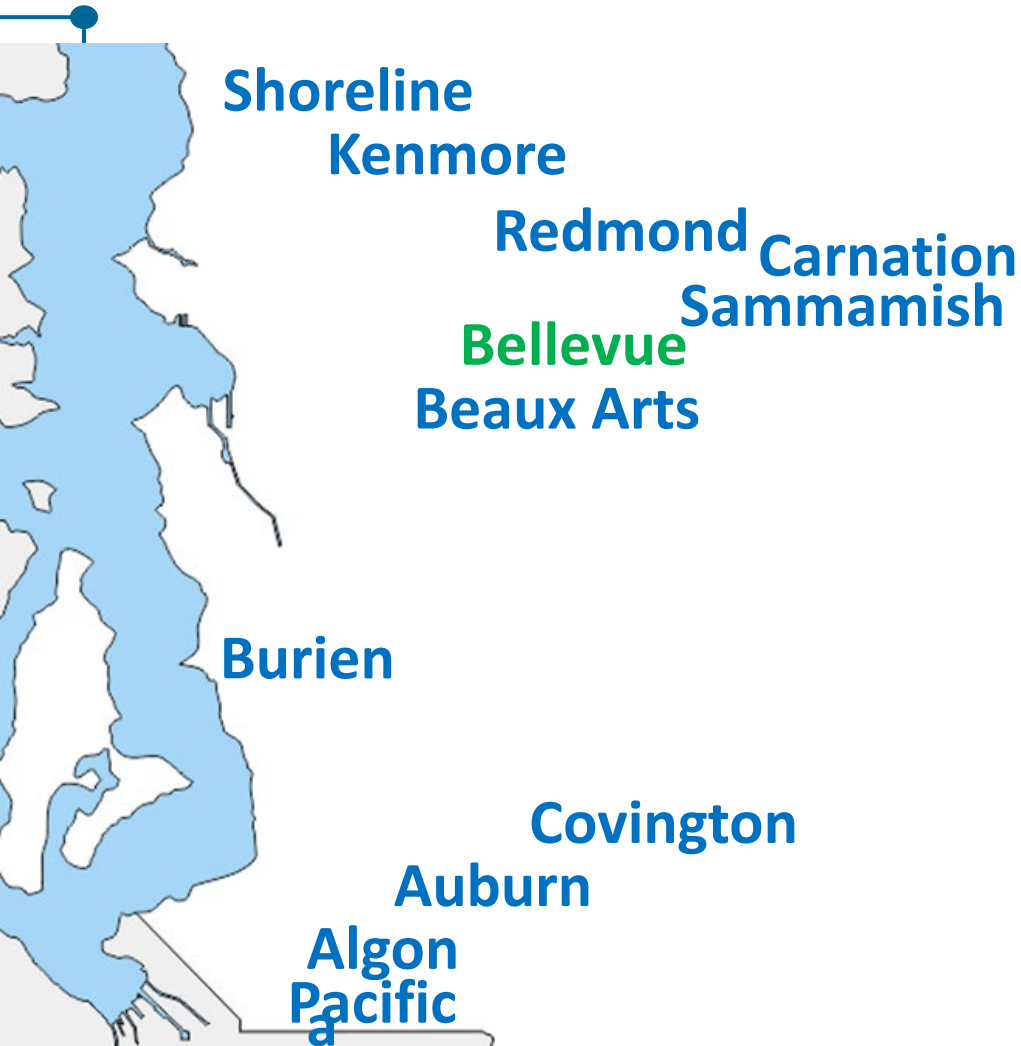


25 Judges

Elected by Electoral District



KCDC Courthouse Locations



Skykomish

13 Contracting Cities

King County District Court Mission Statement

To serve the public by:

- Providing an accessible forum for the fair, efficient and understandable resolution of civil and criminal cases; and
- Maintaining an atmosphere of respect for the dignity of all individuals.



Criminal and Civil Cases

- Gross misdemeanor & misdemeanor criminal cases
- Protection orders
- Civil litigation matters
- Small claims
- Infractions
- Other civil matters



Judicial and Court Time

- Most judicial time is spent on criminal cases
- Infractions require one hearing
- Criminal matters require multiple hearings
- Criminal matters are more serious by definition
- Criminal matters affect liberty interests
- We must respect and enforce constitutional rights

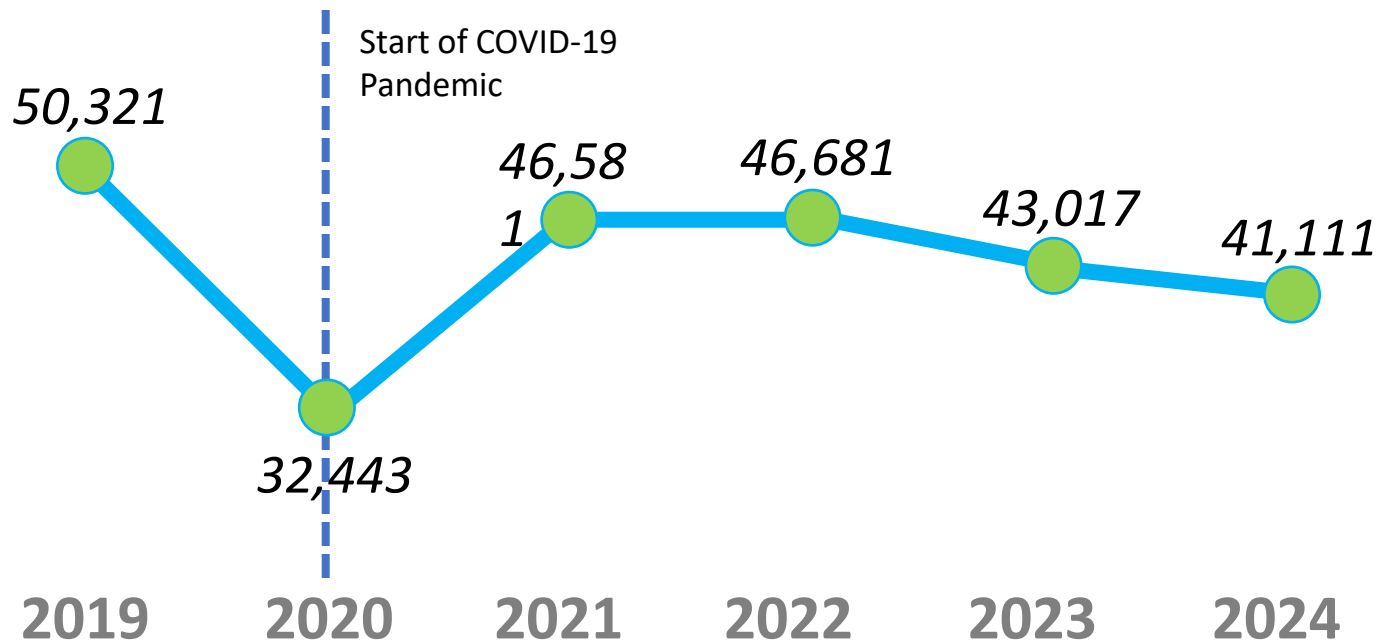


Bellevue 2024 case filings

41,111 Cases Filed

Case Type	Filings
Infraction – Traffic	3,473
Infraction – Non-Traffic	24
DUI	235
Criminal – Traffic	199
Criminal – Non-Traffic	1,532
Parking	35,648

Bellevue 6-year case history



Thank you for your partnership!





City of Bellevue

Bellevue Community Court and Resource Center

Judge Rebecca Robertson | King County Chief Presiding Judge

Stephen Penner | Chief Prosecutor, City Attorney's Office

Craig A. Fritz | Probation Manager, Parks & Community Services



Bellevue Community Court & Resource Center

- Alternative, therapeutic court for eligible misdemeanor participants
- Hold participants accountable while helping them improve their lives
- Judge Lisa O'Toole presiding
- Planned launch: July 15, 2025
- Held at Bellevue downtown library

Foundation of Community Court

Alternative to
traditional court

Goal is to increase
safety for all

Increased collaboration
between the criminal
justice system and
other systems

Community Resource
Center

Collaborative Model



City of Bellevue Involvement

City
Manager's
Office

Bellevue
Police
Department

City
Attorney's
Office

Homelessness
Outreach
Program

Parks &
Community
Services
Probation
Division

Community Court Participants

- Clients approved by City Prosecutor
- Non-violent misdemeanor cases



Benefits of Community Court

Clients

Bellevue
Residents

City
Operations



Information Only