



City of Bellevue

Parks 2025-2034 CIP Budget Update

Parks & Community Services Board
May 15, 2024

Agenda

- Welcome and Agenda (5 min.)
- Council Priorities (5 min.)
- Park & Open Space System Plan (10 min.)
- Budget Process/Funding/Brd Strategies (10 min.)
- Q&A
- Break (15 min.)
- CIP Budget Proposals (45 min.)
- Q&A
- Board Priorities/Theme Development

A decorative blue line starts from the left edge of the slide, extends horizontally to the right, then turns 90 degrees downward, ending with a solid blue circle.

Council Priorities

Strategic Target Areas



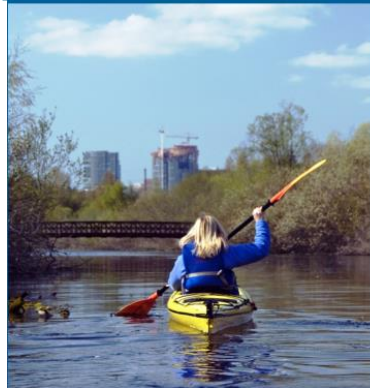
HIGH
PERFORMANCE
GOVERNMENT



VIBRANT
ECONOMY



SAFE & EFFICIENT
TRANSPORTATION
SYSTEM



HIGH QUALITY
BUILT & NATURAL
ENVIRONMENT



COMMUNITY
SAFETY & HEALTH



THRIVING PEOPLE
& COMMUNITIES

2024-26 Council Priorities

- Customer service and data improvements
- City brand identity update
- Arts program expansion
- Affordable housing target update
- Strategy for using city property for affordable housing
- Simplify Accessory Dwelling Unit permitting
- Preserving Old Bellevue Character
- Eastrail regional trail implementation
- Update Diversity Advantage Plan
- Enhance community engagement efforts
- Implement Human Services Strategic Plan
- Support homelessness prevention and housing

Carrying the Vision Forward

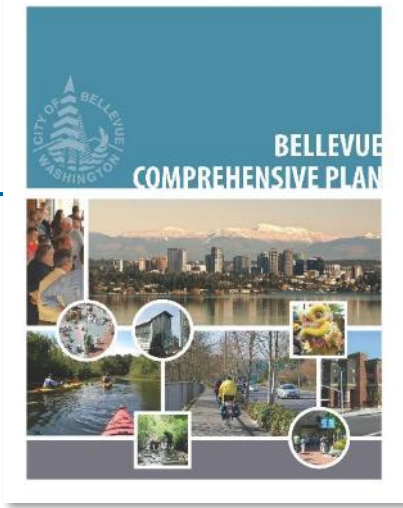
- Aquatic Center at Bellevue Airfield Park
- Meydenbauer Bay Park
- Grand Connection
- Ashwood Park
- Parks for underserved neighborhoods
- BelRed and Wilburton
- 2008 and 2022 Park Levy commitments

A decorative blue line starts from the left edge of the slide, extends horizontally to the right, then turns 90 degrees downward, ending with a solid blue circle.

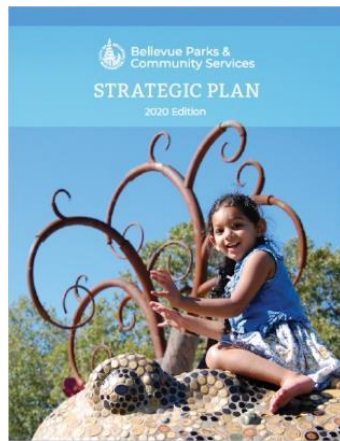
Parks & Open Space System Plan

Guiding Plans

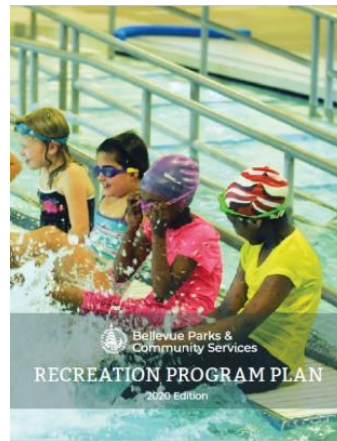
City of Bellevue Comprehensive Plan



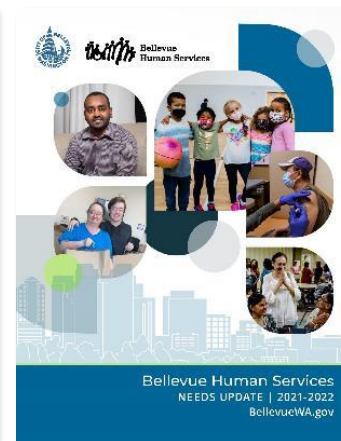
Parks &
Open Space
System Plan



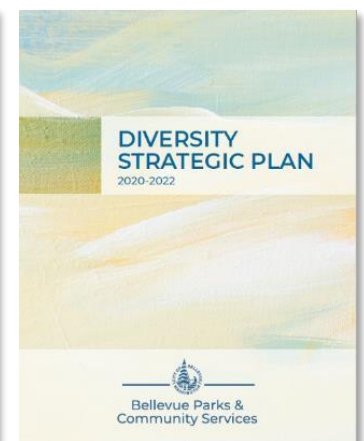
Department
Strategic
Plan



Recreation
Program
Plan



Human
Services
Needs
Update



Department
Diversity
Strategic
Plan

Facility Use

Use in the
past 12
months
(Survey data)

Type of Facility	Anyone in Household
Trail through natural areas	80%
Paved or gravel trails	80%
Community beach, waterfront park, or boat launch	68%
Parks with display gardens	62%
Open areas for unstructured play	61%
Outdoor sports fields or courts	43%
Playgrounds	43%
Community / visitor centers	30%
Indoor sports facilities / fitness centers	23%
Designated off-leash dog areas	22%
Swimming pools	13%
Other	2%

Development Preferences

Ranked from survey data

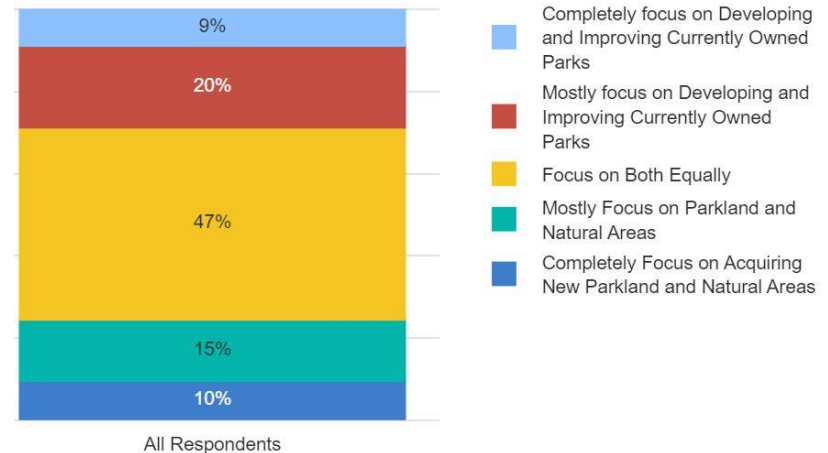
- Trails
- Beaches and waterfront parks
- Unstructured play/picnic areas
- Parks with display gardens
- Outdoor sport fields/courts
- Swimming pool
- Indoor facilities

Development Preferences

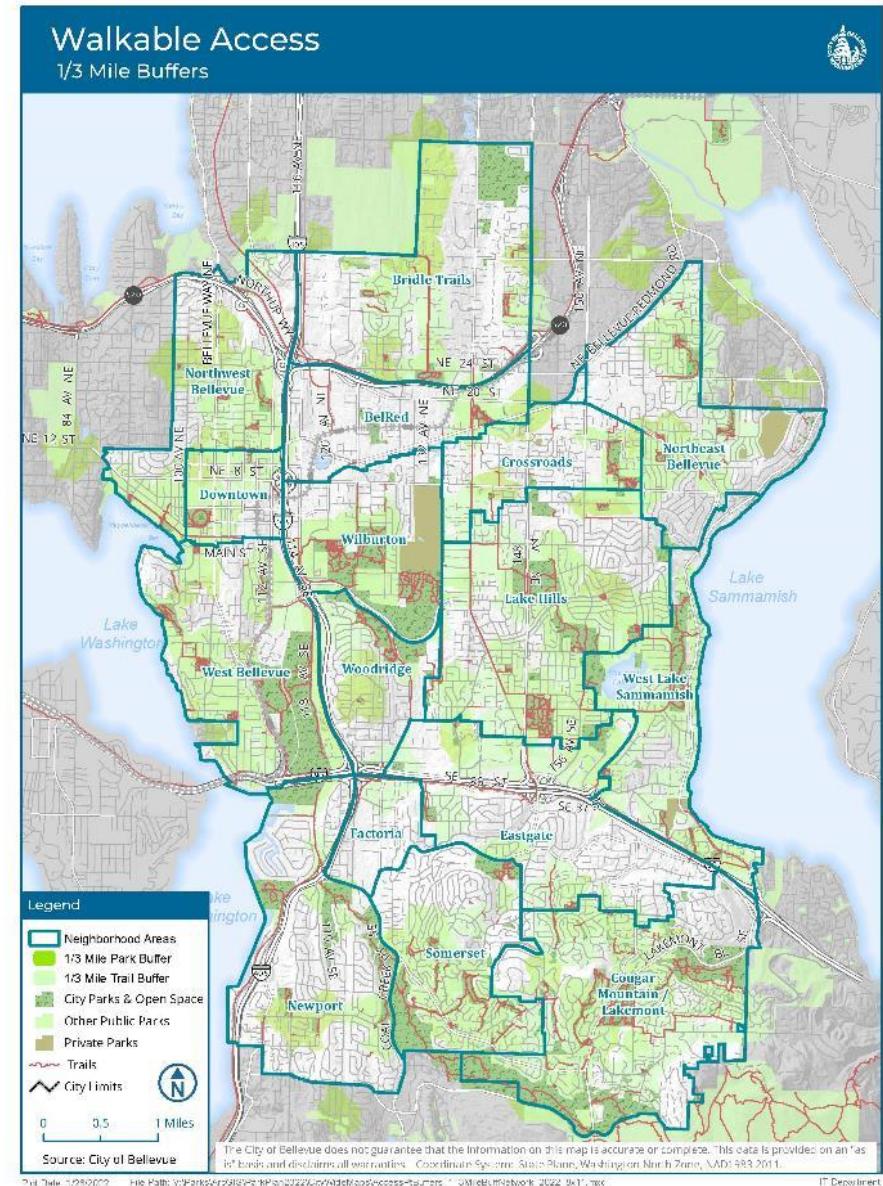
Ranked from survey data

- Trails
- Beaches and waterfront parks
- Unstructured play/picnic areas
- Parks with display gardens
- Outdoor sport fields/courts
- Swimming pool
- Indoor facilities

- # Development Preferences
- Ranked from survey data
- Trails
 - Beaches and waterfront parks
 - Unstructured play/picnic areas
 - Parks with display gardens
 - Outdoor sport fields/courts
 - Swimming pool
 - Indoor facilities

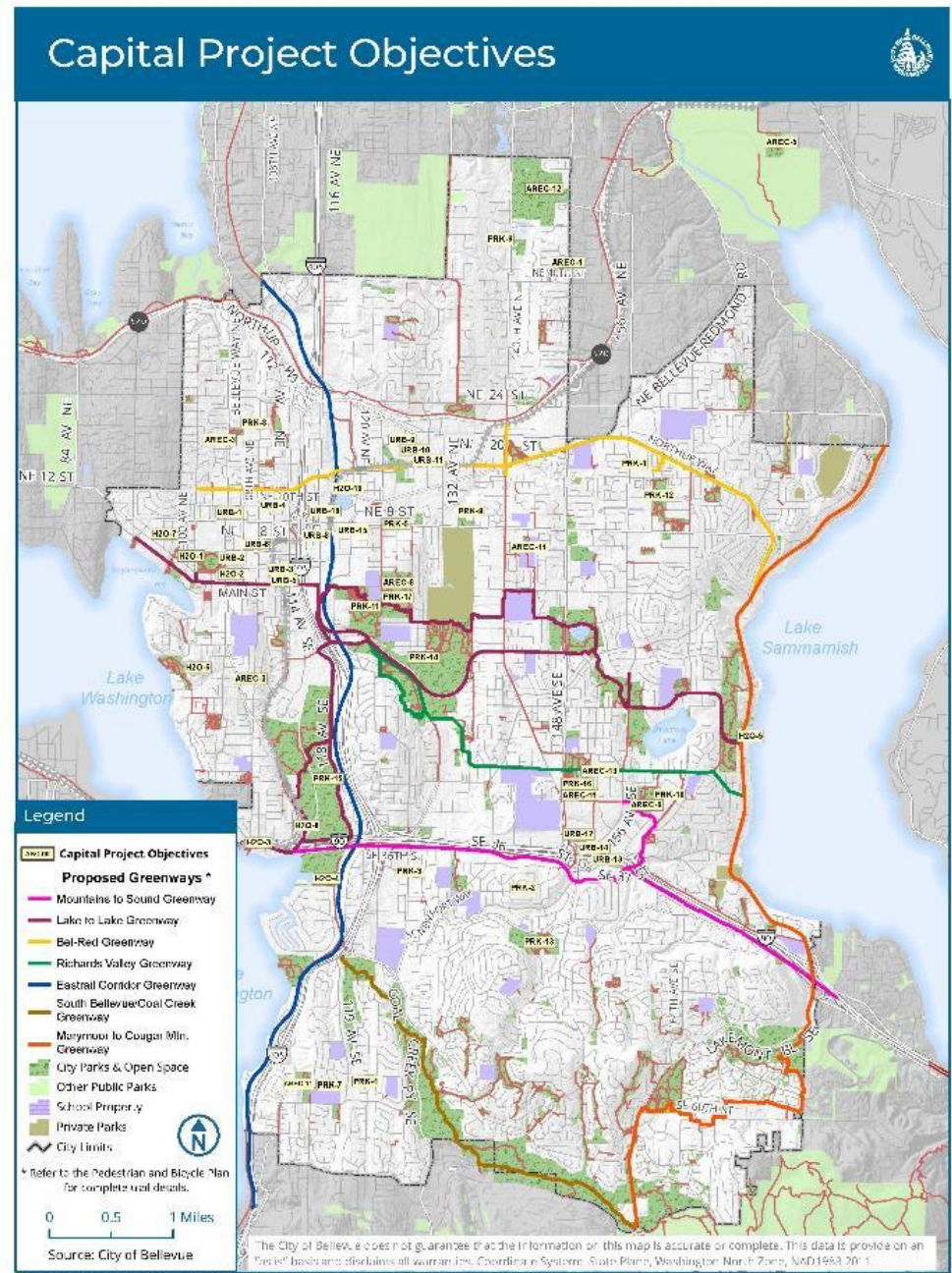


- Individual participation
- Public satisfaction
- Walkable access



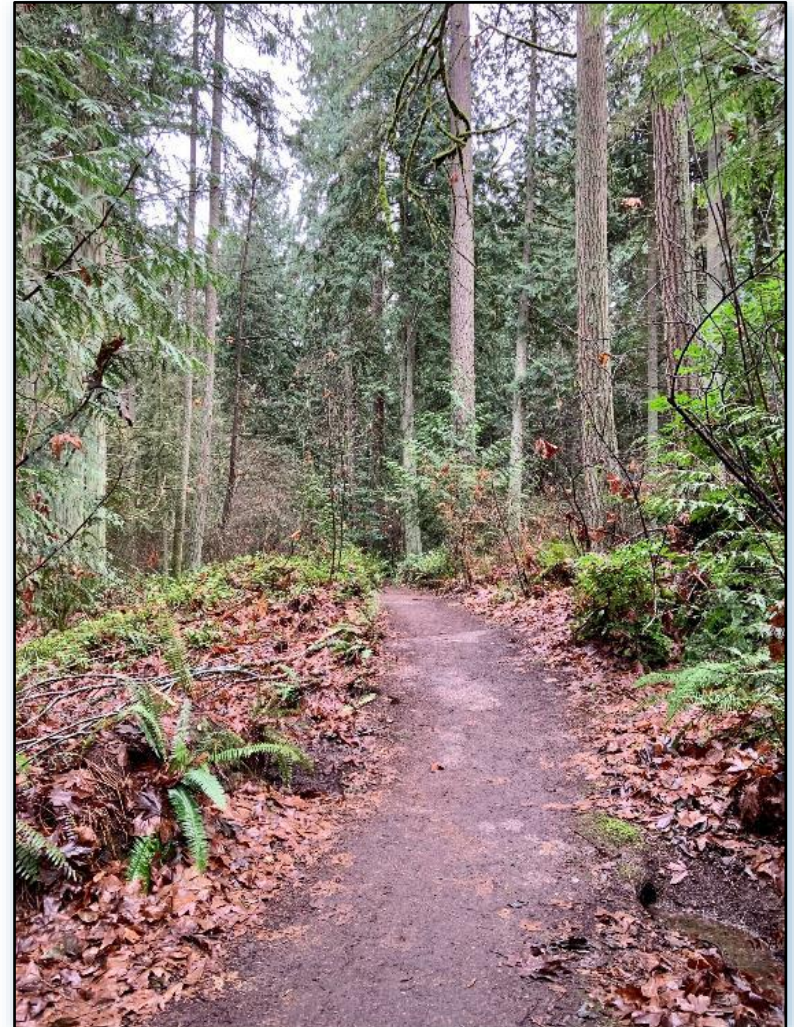
Focus Areas

- Open Space, Greenways, Wildlife Corridors, & Trails
- Park Facilities
- Active Recreation Facilities
- Urban Park Systems
- Waterfront Access
- Partnership Opportunities
- Historic, Cultural, & Art Resources



Open Space, Greenways, Wildlife Corridors, & Trails

- Greenways establishment
- Connectivity
- Open space and natural resources conservation



Park Facilities

- Neighborhood park acquisition and development
- Community park development and expansion



Active Recreation Facilities

- Provide a diversity of indoor and outdoor recreation spaces
 - Sport fields/courts
 - Off-leash dog areas
 - Community centers
 - Aquatic facility
 - Enterprise fund facilities



Urban Park Systems

- Develop parks
- Expand trail connections
- Enhance natural systems
- BelRed
- Downtown
- Eastgate, I-90
- Wilburton TOD



Waterfront Access

- Public waterfront acquisition and development
- Connectivity
- Non-motorized boat access



Partnership Opportunities

- Partner with public, private, and non-profit entities to create/fund/manage
- Connect to regional facilities
- Historic building preservation



Historic, Cultural, & Art Resources

- Protect and interpret cultural history
- Provide space for artistic expression
- Historic and cultural facilities stewardship

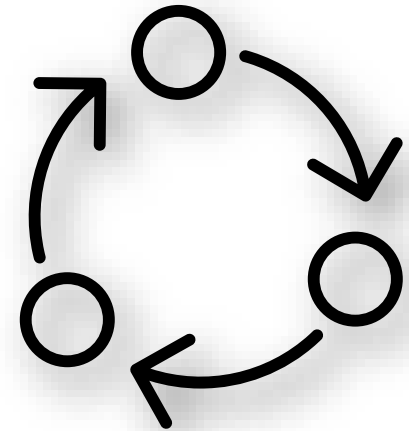


A decorative blue line starts from the left edge of the slide, extends horizontally to the right, then turns 90 degrees downward, ending with a solid blue circle.

Budget Process

Updates on City CIP Budget Structure

- CIP = Capital Investment Program
- 7-yr to 10-yr plan – updated every 2 years
- CIP phases:
 - Planning
 - Design
 - Construction/Implementation



Current Parks 2023-2029 CIP

- Parks CIP Funding Resources:
 - Real Estate Excise Tax (REET)
 - 2008 Parks & Natural Areas Levy
 - 2020-2025 King County Parks Levy
 - 2022 Parks & Opens Space Levy
 - Project Specific Leveraging – grants, partnerships, donations & developer fees
- Parks can also request General CIP funding available to all program areas

Budget Process Timeline



April 30

Proposals due internally

Through
Summer

Proposal review and scenarios developed

September

City Manager's Proposed Budget

June- October

Public Hearings

October

Council Deliberation

November

Council Budget Adoption

Park Board Roles



TYPICAL BUDGET
ROLE - ADVISORY TO
COUNCIL ON PARKS
CAPITAL NEEDS



REVIEW PARKS
CIP STRATEGY



DEVELOP A
PARK BOARD
COMMUNICATION
TO COUNCIL

Next Steps



April

Budget Process Introduction

May

Review CIP Projects

June

Review and Approve Board Memo to Council

September

Transmit Parks & Community Services Board Comments to Council



Questions?

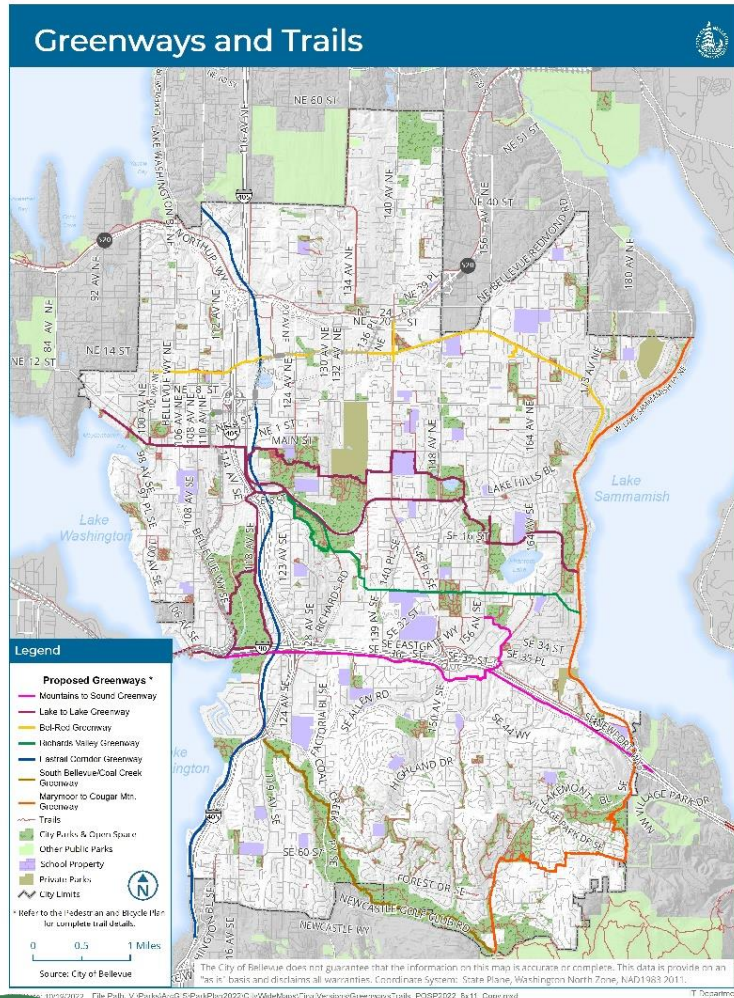
Break

A decorative blue line starts from the left edge of the slide, extends horizontally to the right, then turns 90 degrees downward, ending with a solid blue circle.

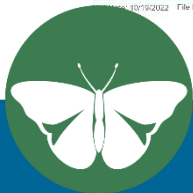
Capital Budget Proposals

2025-2034

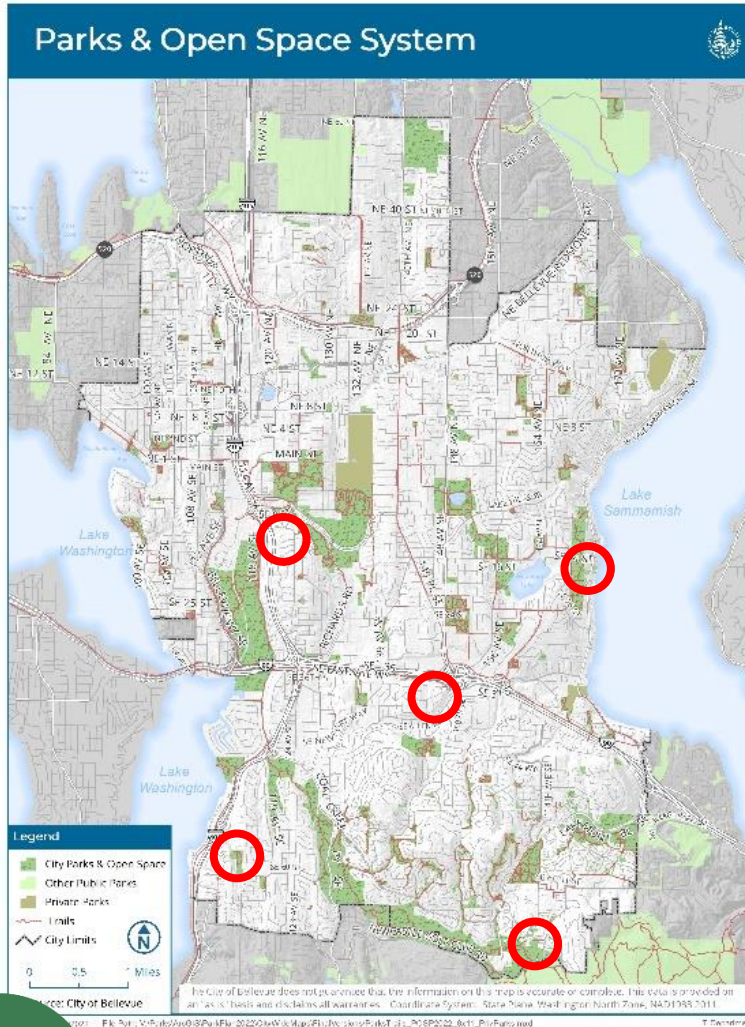
Park Trail System Access and Expansion



\$9.9M (\$1M/Year)



Parks & Open Space Acquisition



\$45M (\$2.2-\$6M/year)



BBG Design and Development

\$7.9M 
Levy



Kelsey Creek Energy and Accessibility Renovation

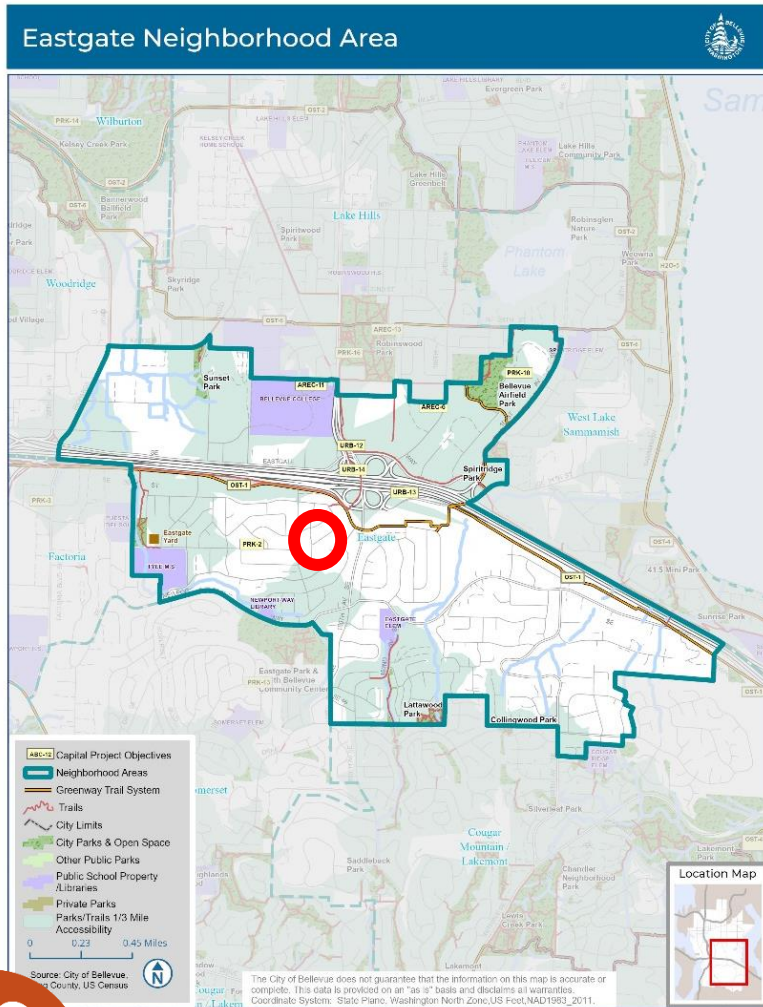
NEW

\$19M

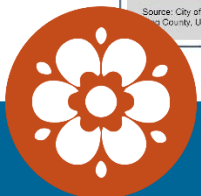


Eastgate Neighborhood Park

\$8.6 M 
Levy

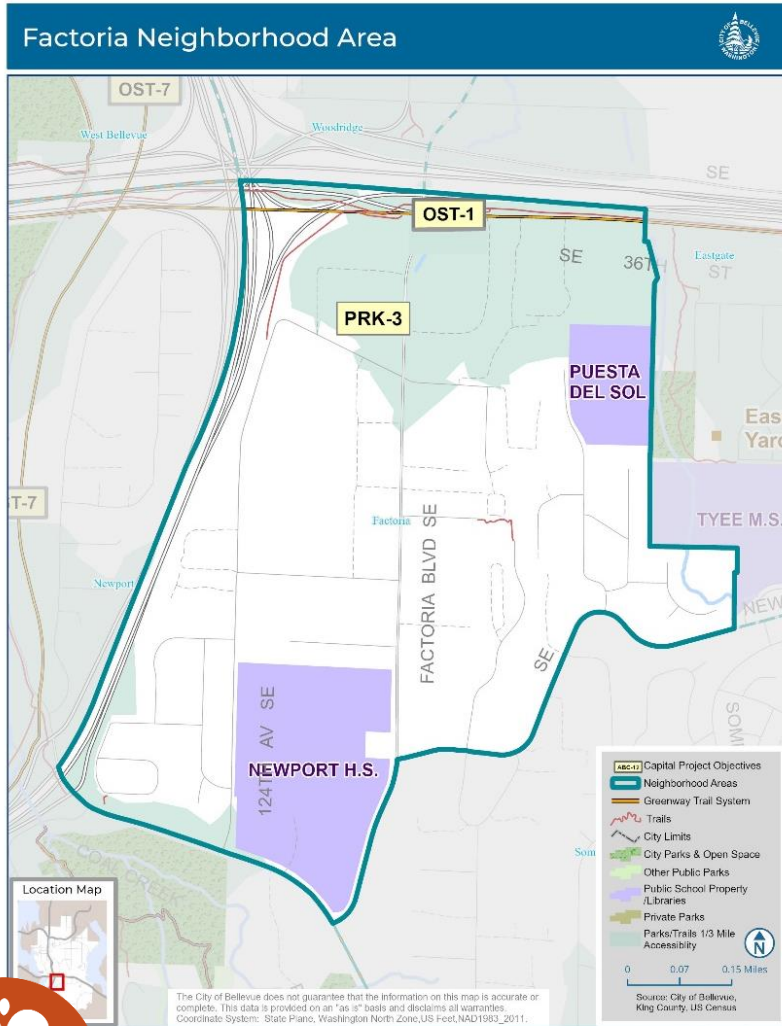


File Name: V:\Parks\ArcGISPro\Map\2022\NeighborhoodArea\Map\NeighborhoodAreaMap_POST2022_8x11\NeighborhoodAreaMap_POST2022_8x11_MapSeries.aprx



Factoria Neighborhood Park

\$10M 
Levy



ADA Accessibility Barrier Removal Initiative

NEW

\$700K-\$1M/Year | \$9M Total



Bellevue Airfield Park Development

\$22.8M



LEGEND:

- ① Parking Area
- ② Flexible Field
- ③ Playgrounds
- ④ Basketball Court
- ⑤ Pickleball Courts
- ⑥ Splash Pad
- ⑦ Picnic Area
- ⑧ Amphitheatre
- ⑨ Stormwater Area
- ⑩ Restrooms
- ⑪ Aquatic Center



Aquatic Facility Design and Development

(+\$27M) / \$38.5



Off-Leash Areas and Emerging Sports Facilities

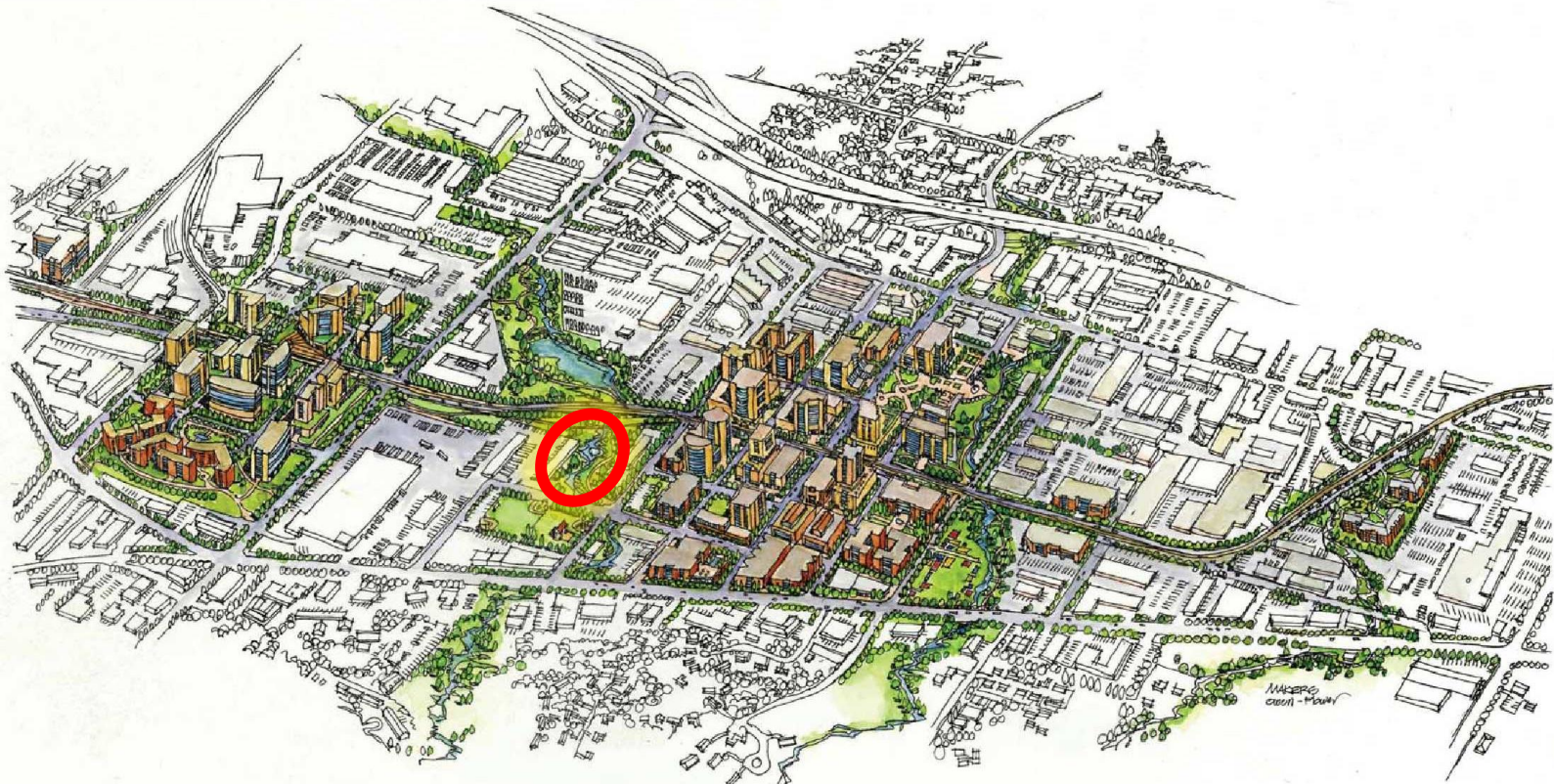
\$12.3M



BelRed Parks and Streams

- \$13.7M Levy + Developer Fees

\$25.5M



Wilburton Parks and Trails

NEW

\$25M



Ashwood Park Design and Development

■ 2025 - 2034

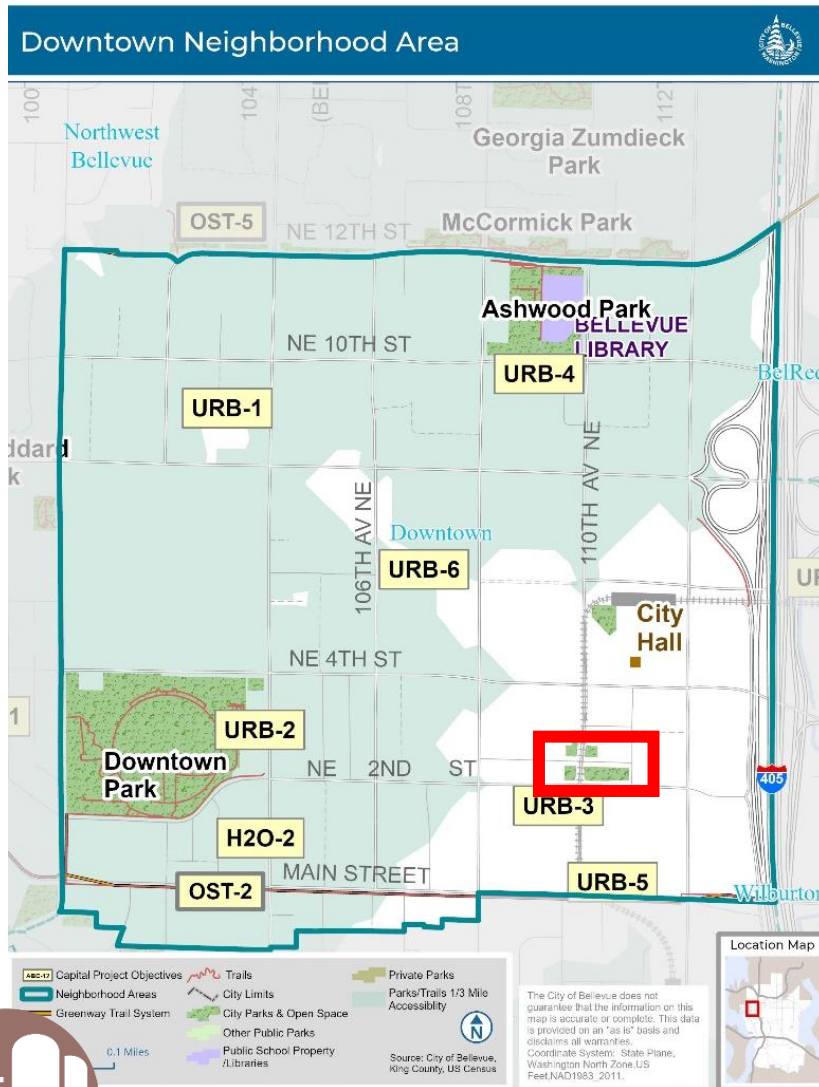
\$10.5 M



Downtown SE Neighborhood Park

NEW

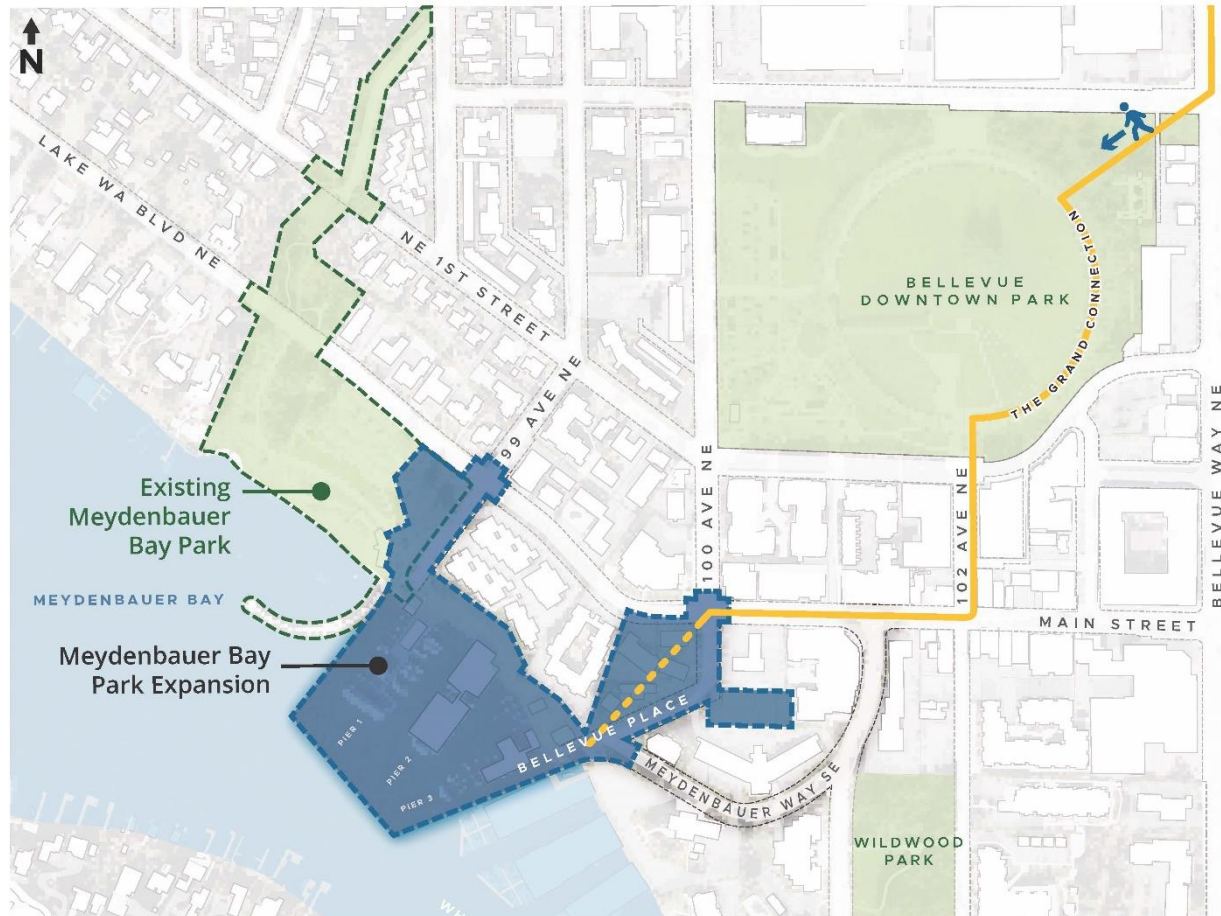
\$13M CIP



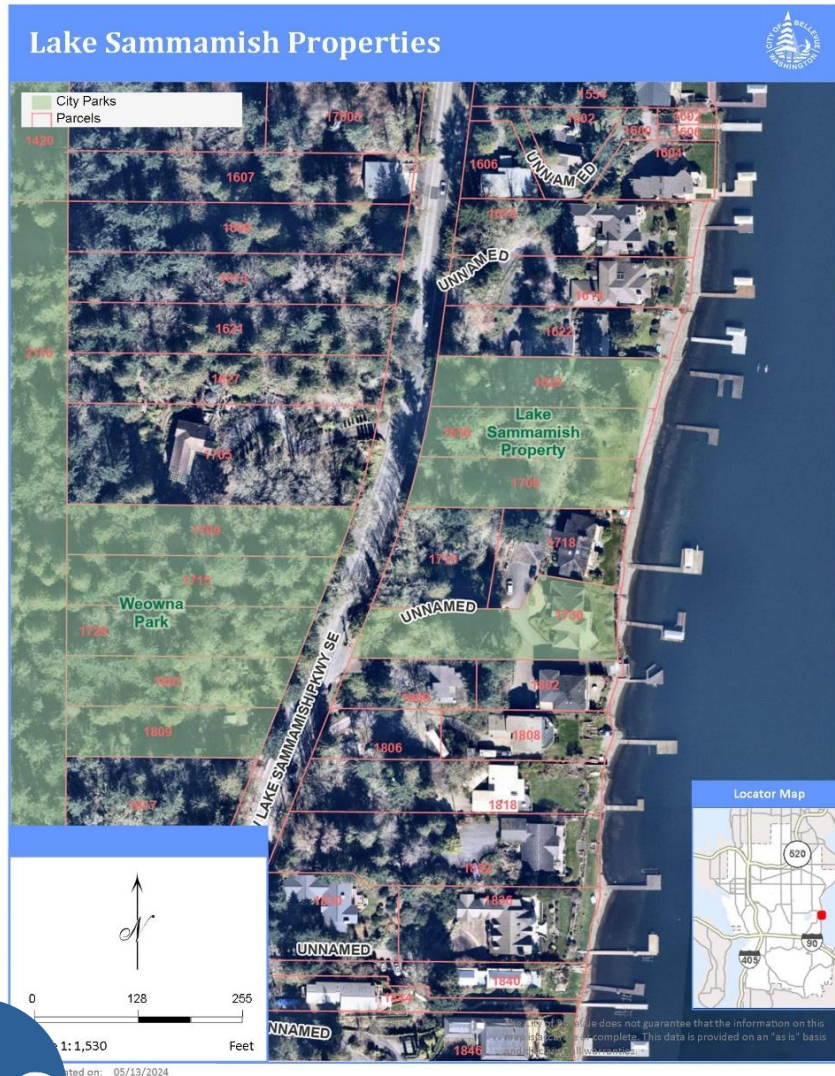
Meydenbauer Bay Park Design & Development

■ 2025-2034

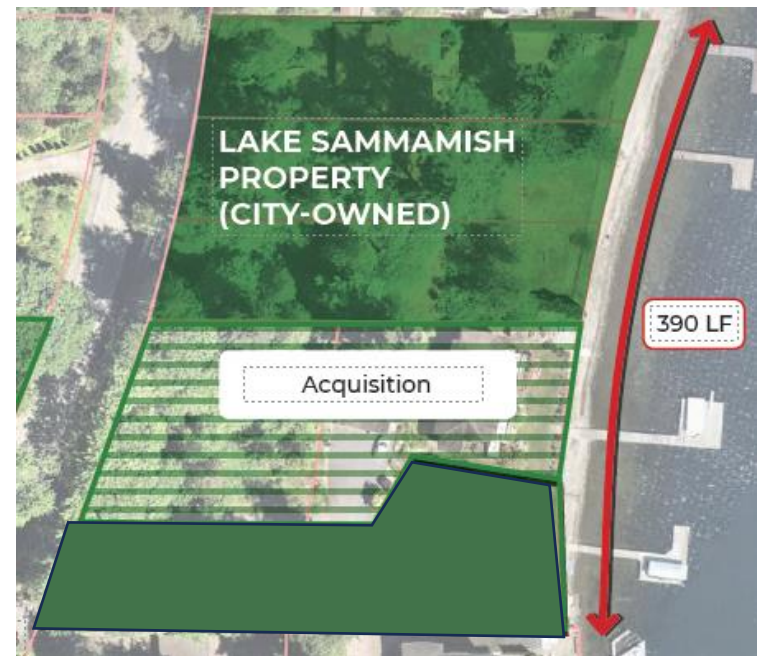
(+15M) / \$33M



Lake Sammamish Neighborhood Beach Park



\$16.4M 
Levy



Park Shoreline Restoration

■ 2025-2034

(+ 4.4M) / \$14.2M



Japanese American Legacy Project

\$250K 
Levy



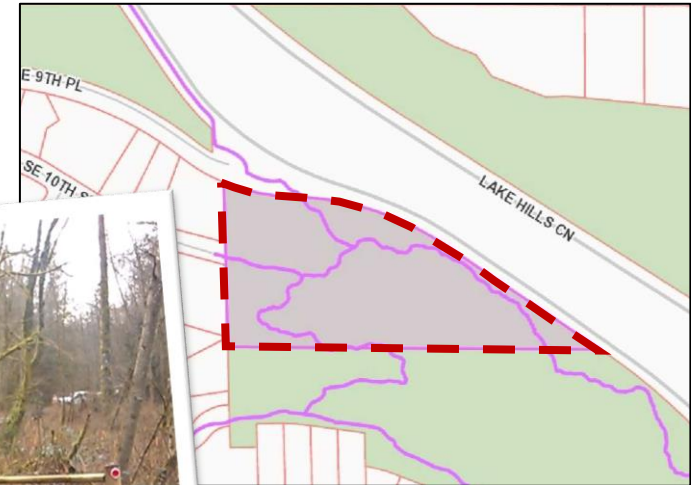
Parks Renovation & Refurbishment Plan

(+33.9M) | \$65.5M Total



King County Parks Levy (2020-2025)

Almost Complete



\$1.8M 2023-2029 (No change)



Mercer Slough East Link Mitigation

Almost Complete



Bridle Trails Valley Creek



Complete 
Levy





Questions and Discussion

- Questions about Parks 2025-34 CIP Project Requests
- Discuss key messages for Council Communication