

# EASTRAIL

## Bellevue Progress Update February 2020

**Christie True** - Director, King County  
Department of Natural Resources and Parks

**Curt Warber** - Eastrail Trail Project  
Manager



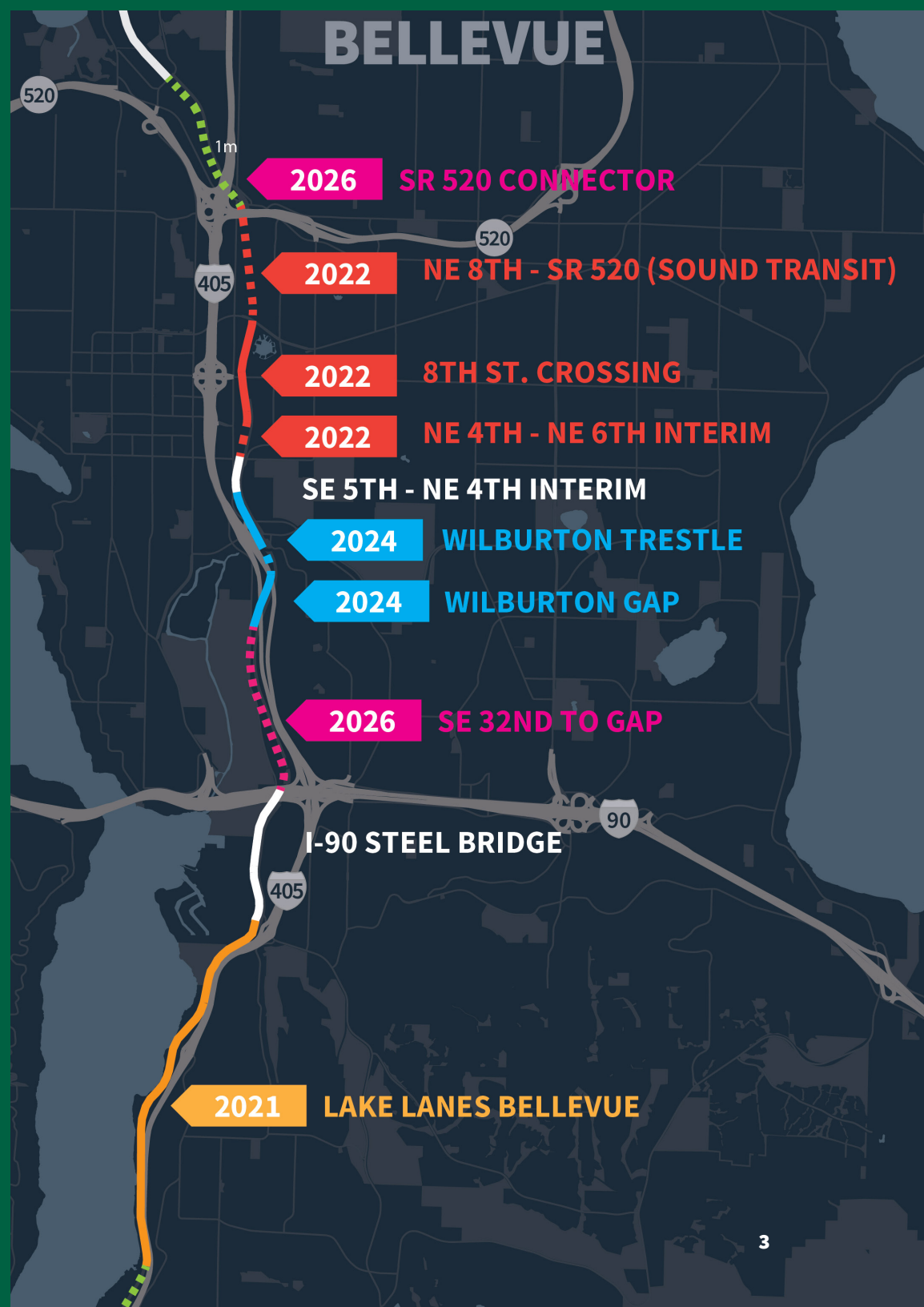
# Parks Levy Passed, anticipate \$49 Million for Eastrail trail through 2025

- Strong support for levy
- Demonstrates residents' commitment to regional priorities and local park systems



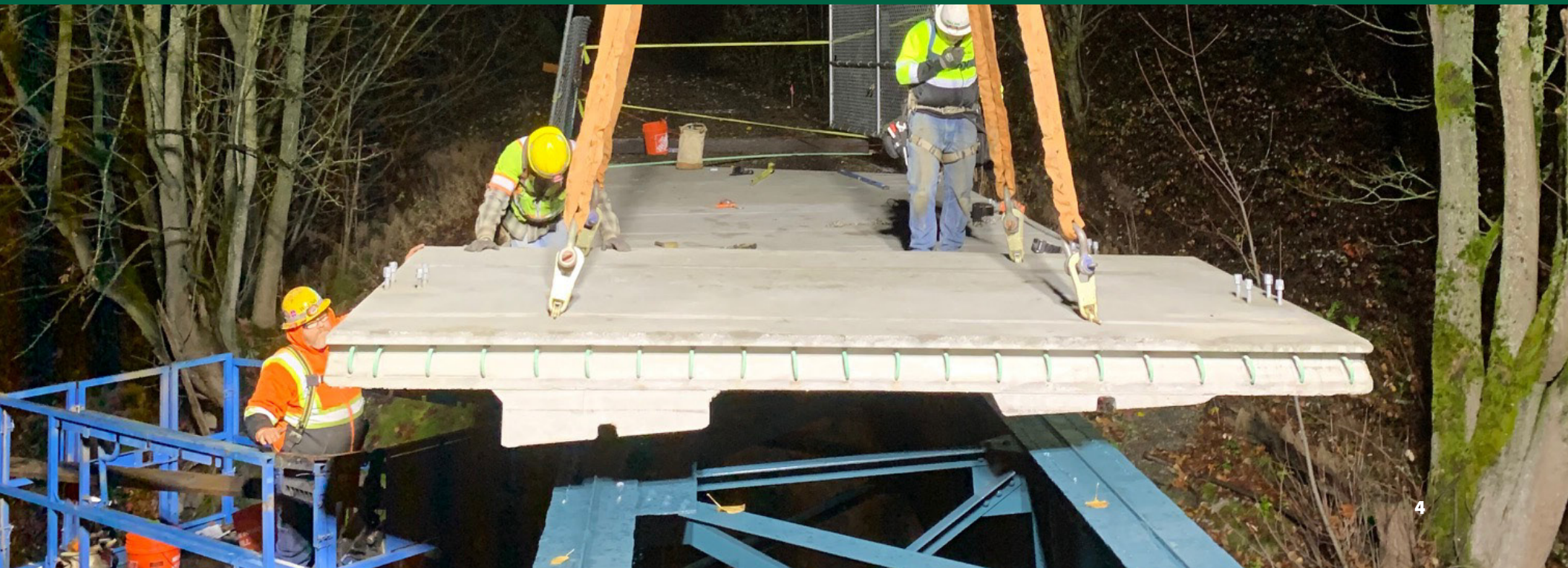
# Current estimated opening schedule for Bellevue Eastrail

*(Best information as of February 2020)*



# Progress on Eastrail Trail Capital Projects

- Coal Creek Bridges completed
- I-405 Design Build underway
- NE 8th Overcrossing progress
- Wilburton Trestle permit documents underway



# Coal Creek Bridges

- County project, in anticipation of WSDOT I-405 work
- \$ 1.5 Million (2014 parks levy)
- Expands trail to north, and provides safe crossing over Coal Creek Parkway
- Open for use in 2021

## Coal Creek Bridges



# WSDOT I-405 Renton to Bellevue

- New bridge over southbound I-405 & 2.5 miles of paved trail in Bellevue south of I-90
- \$19.6 M from WSDOT + \$6.7 M from King County (2014 levy)
- Close coordination between City and County staff
- Trail construction closures this Summer, open 2021

## Lake Lanes Trail



# Wilburton Trestle

- Moving forward with design - iconic experience for visitors
- Trestle repair costs higher than originally budgeted
- Working to reduce costs (phasing & maintenance plan) and bring in new outside funding
- Anticipate budget request (within King County) for construction in the 2021-2022 biennium

## Wilburton Trestle



# NE 8th Overcrossing

- Moving from 60%-90% design
- Permitting and acquisitions progressing
- Close coordination with Sound Transit to accommodate north stairs to plaza and Sturtevant Creek design issues
- Construction anticipated to begin late 2020, open to use late 2022/early 2023

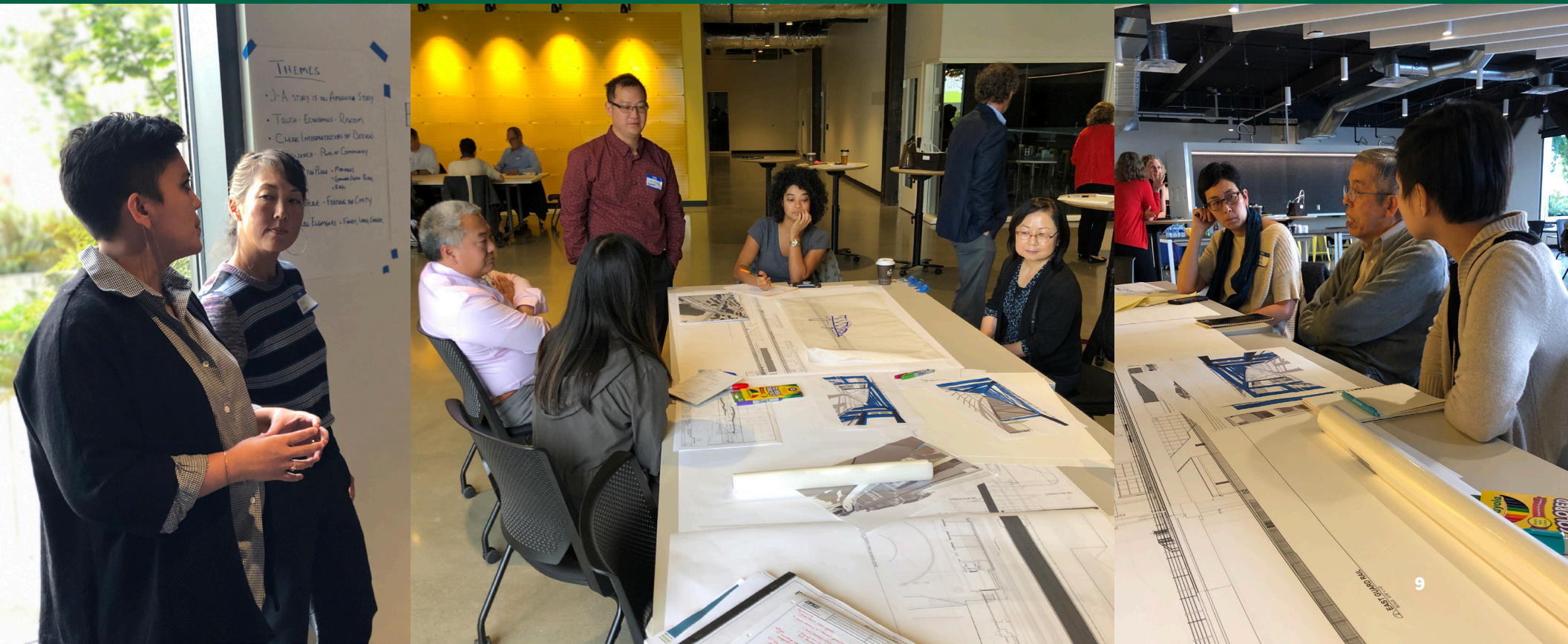
## NE 8th Overcrossing





# Japanese American Heritage

- Two charrettes completed in partnership with City.
- Support & enthusiasm for an installation associated with the NE 8th Overcrossing project.
- King County Parks funding (\$100,000) to support continuing design work
- Close coordination, but schedule and funding for heritage installation still uncertain.



# The “Northern Trails”

- Rail removal and selected interim trail in Kirkland and Woodinville.
- Currently in design, open to the public fall 2021.
- Continuous trail from NE 8th through Kirkland to the Sammamish River Trail at NE 145th!

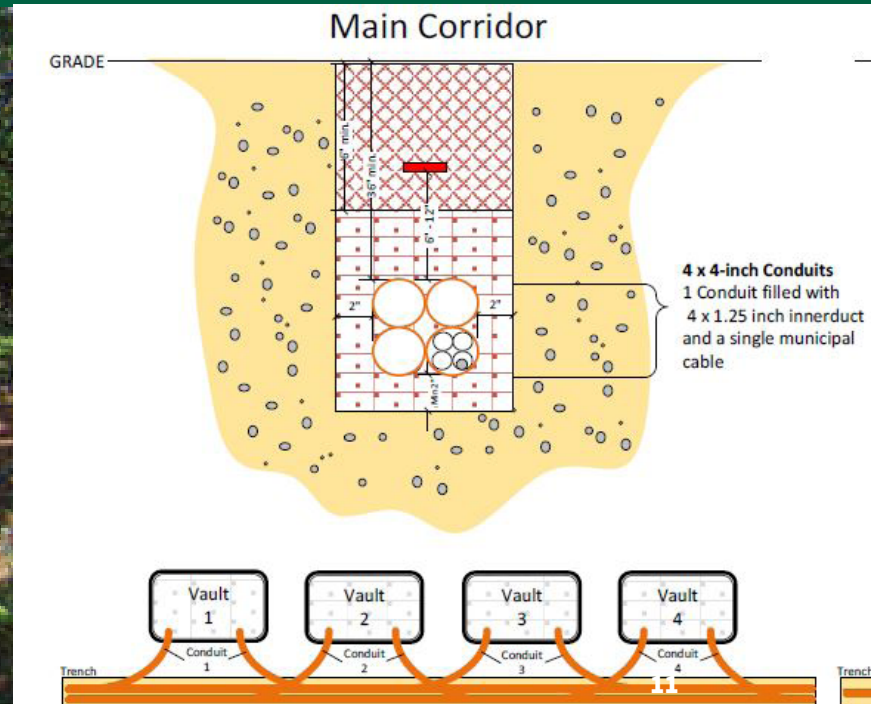


# Fiber Optic Feasibility

- New fiber emphasizing local connectivity
- Local government and agency use
- Potential lease revenue
- Adding value to a connected corridor for trail, transit & utilities



## Fiber Optic



# Eastrail Partners Up & Running

- Private/Public cooperative funding for the start-up phase of the non-profit
- New director hired
- Expanding the board
- Goals to attract new funding, grow and strengthen partnerships

## Board

|                 |                                 |
|-----------------|---------------------------------|
| Gene Duvernoy   | <i>Forterra</i>                 |
| Greg Johnson    | <i>Wright Runstad &amp; Co.</i> |
| Matt Cohen      | <i>Community</i>                |
| Bill Finkbeiner | <i>Community</i>                |
| Stacy Graven    | <i>Community</i>                |
| Taldi Harrison  | <i>REI</i>                      |
| Steve Kramer    | <i>KG Properties</i>            |
| John Marchione  | <i>Community</i>                |
| Joan McBride    | <i>Community</i>                |
| Greg Shelton    | <i>Physio Control</i>           |
| Edna Shim       | <i>Children's Hospital</i>      |
| Kay Taylor      | <i>Evergreen Hospital</i>       |
| Dave Tomson     | <i>SRM Development</i>          |
| Rocale Timmons  | <i>Seco Development</i>         |
| Sung Yang       | <i>Pacific Public Affairs</i>   |

## Katherine Hollis

*Executive Director*

