



City of Bellevue

Neighborhood Park Development

Newport Hills SE 60th Street

Shelley McVein, Glenn Kost
Parks & Community Services
December 2, 2019



Direction Needed from Council

Request feedback on the Park Board recommended plan for the park on SE 60th Street in Newport Hills. Staff will then proceed with design, permitting and construction.



City of Bellevue

Newport Neighborhood Area

Meeting Flyer Mailing Area



Property Aerial

Property Area
13.7 Acres Total

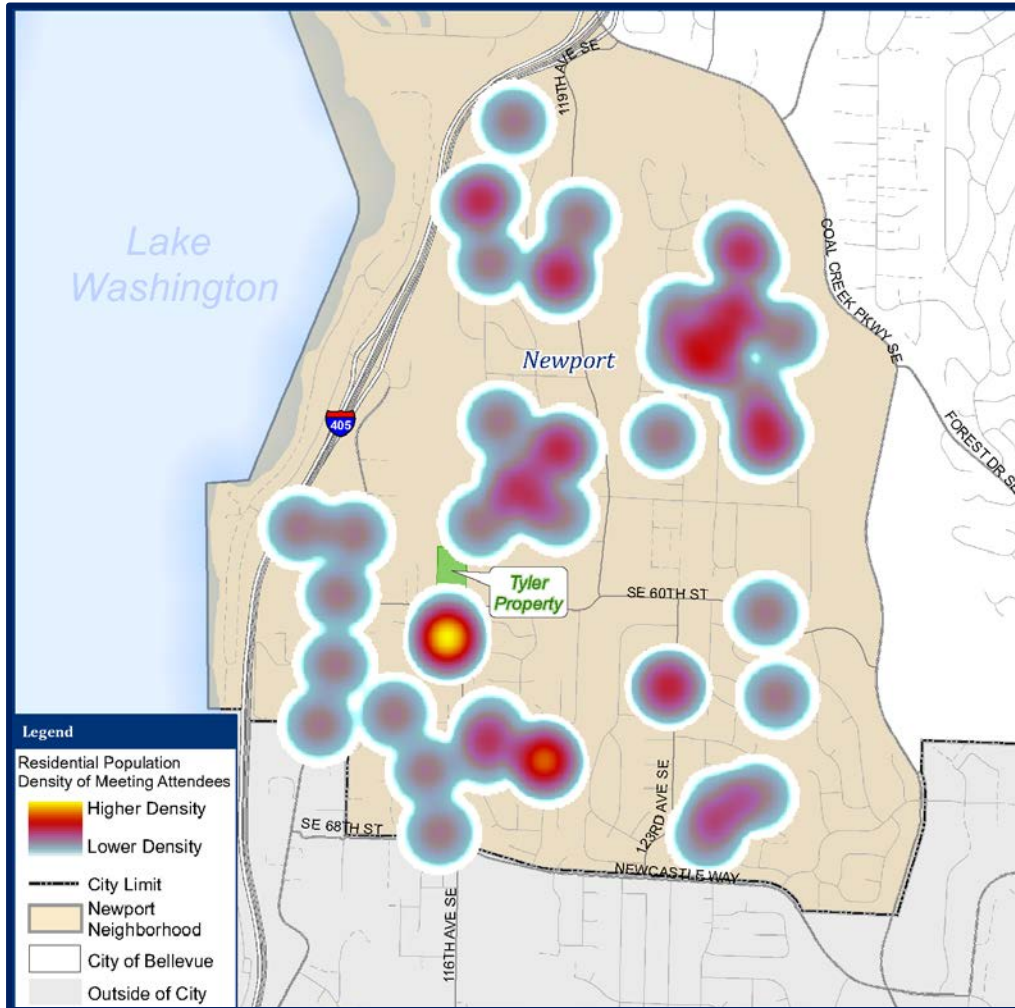


Outreach and Feedback Overview

- 3,189 flyers mailed to neighborhood residents
- Advertised on Parks & NHCC Websites, NextDoor, Gov alerts
- 75 attended the May 21st meeting; 55 responses
- 50 attended the July 23rd meeting; 146 responses
- 53 attended the Sept. 24th meeting; 58 responses

Community Involvement Heat Map

September 24, 2019 Community Meeting



July 23, 2019 Meeting

42 attended & signed in*

- 41 NH addresses
- 19 Comment Cards
- 17 Newport Hills addresses

September 24, 2019 Meeting

53 attended & signed in*

- 51 NH addresses
- 21 Comment Cards
- 20 Newport Hills addresses

* Not including COB staff, Councilmembers or PB members

Alternative A

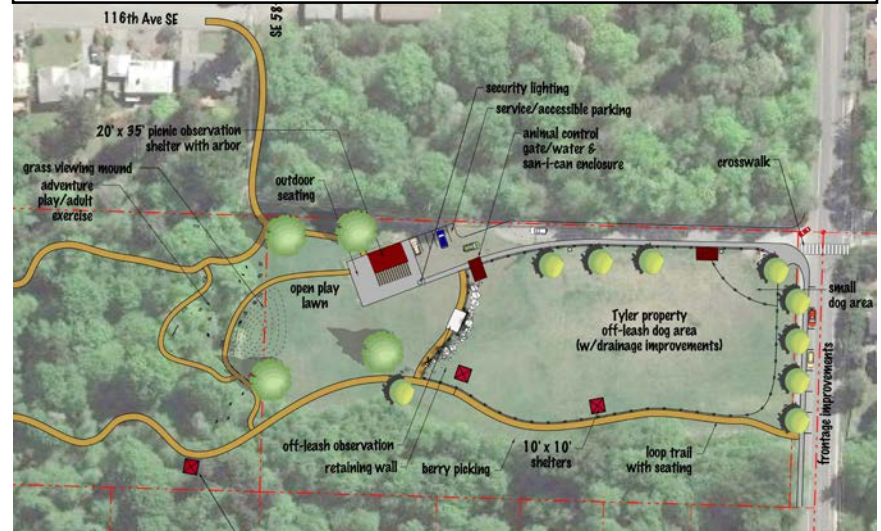


Three Plan Alternatives

Alternative B



Alternative C



Feedback

SURVEY

Alternative A:	13 (10%)
Alternative B:	35 (27%)
Alternative C:	62 (48%)
Combination:	18 (14%)
Neither:	1 (<1%)

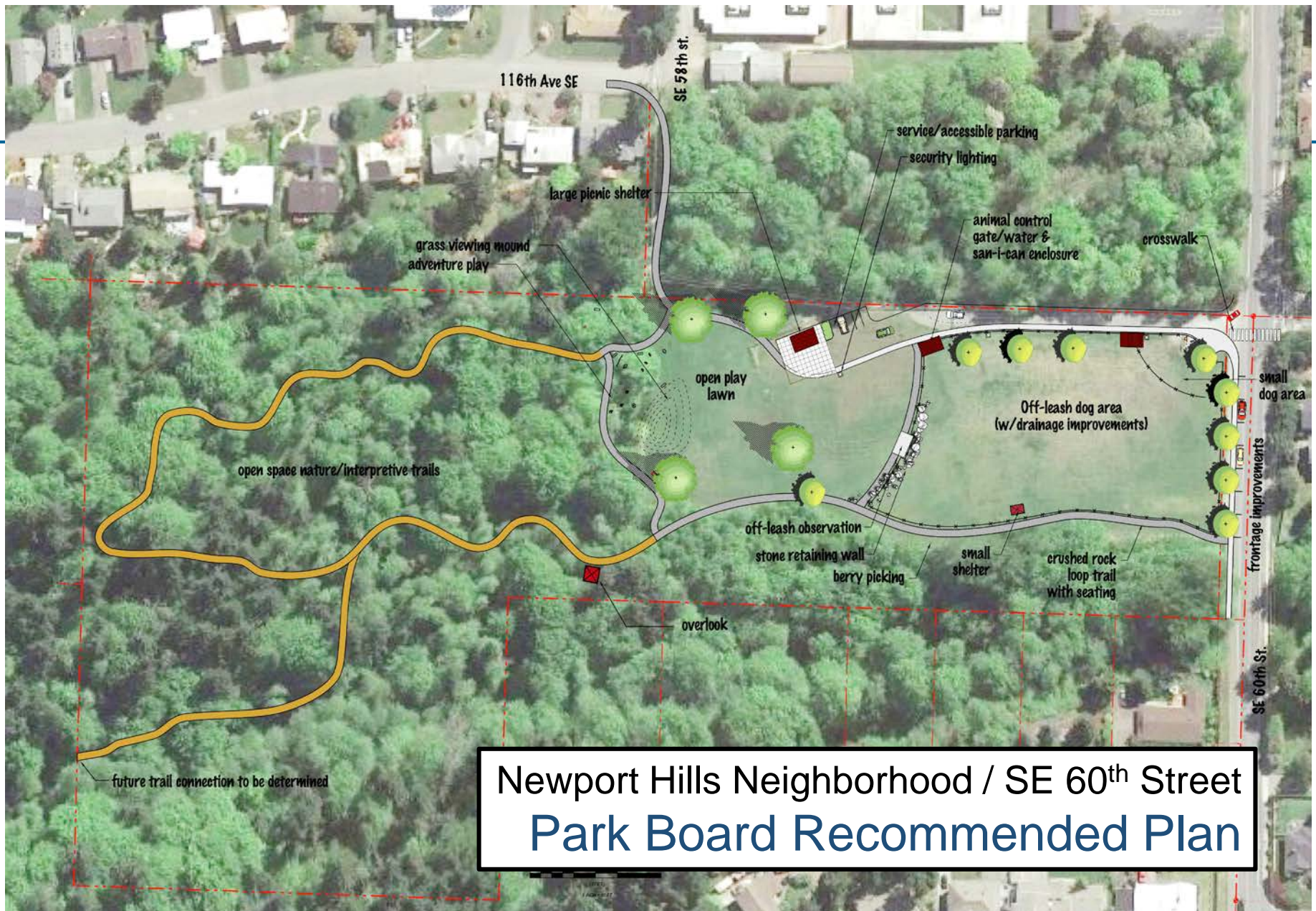
PARK BOARD

- General support for Alt. C;
- Some felt a 1-acre OLA better reflected a neighborhood facility, others felt it was right sized;
- Request that the OLA in Alt. C be reduced to approximately same size as the general use area.

Park Board Recommended Plan Features

- Equivalent size OLA & general park
- Picnic shelter & lawn area
- Fenced off-leash area with shelter
- Adventure-themed play area
- Loop trail system & connections
- Street frontage improvements & crosswalk
- Paved entry drive, parking & restroom





Newport Hills Neighborhood / SE 60th Street
Park Board Recommended Plan

Next Steps / Project Timeline

- Tonight – Council feedback on the Park Board recommended plan
- Design, permitting and environmental review (includes CPTED) - through spring 2020
- Public bid - late spring 2020
- Construction - complete in 2020





Direction Needed from Council

Request feedback on the Park Board recommended plan for the park on SE 60th Street in Newport Hills. Staff will then proceed with design, permitting and construction.