



ESI Strategic Plan Update

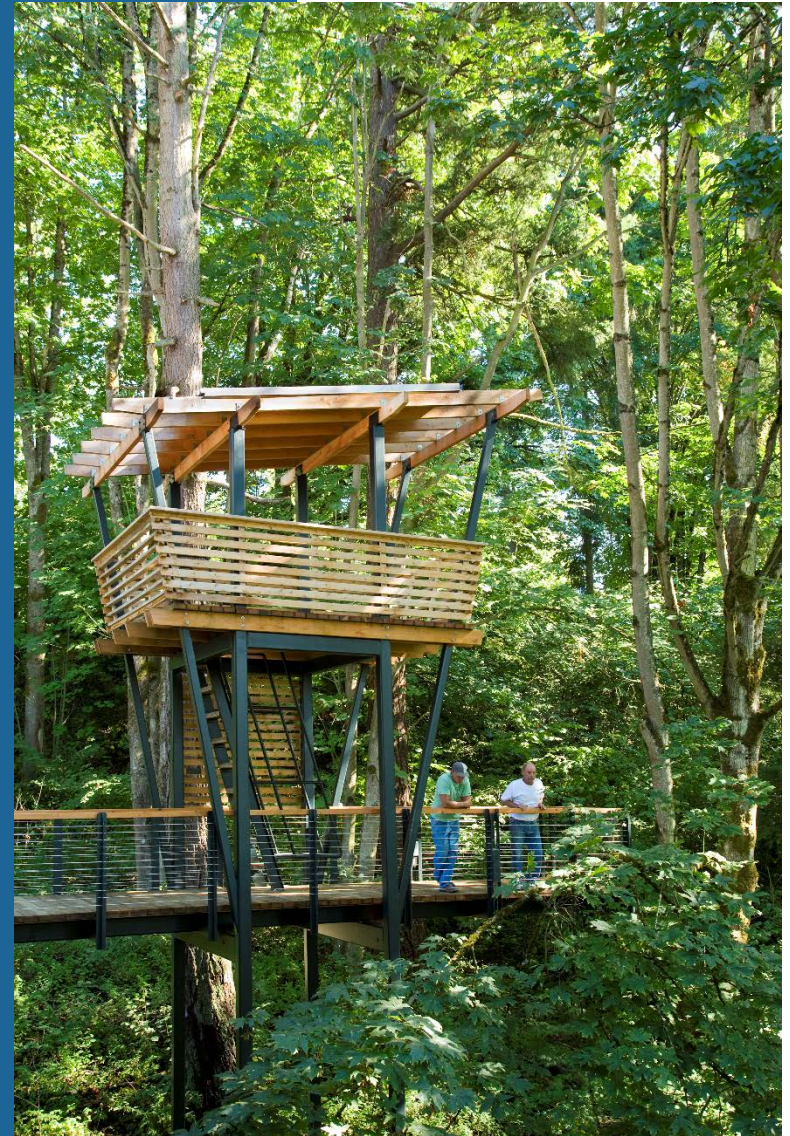
Environmental Goals & Potential Targets

Jennifer Ewing, Program Manager
Arun Jain, Assistant Director
Community Development
May 20, 2019



Direction

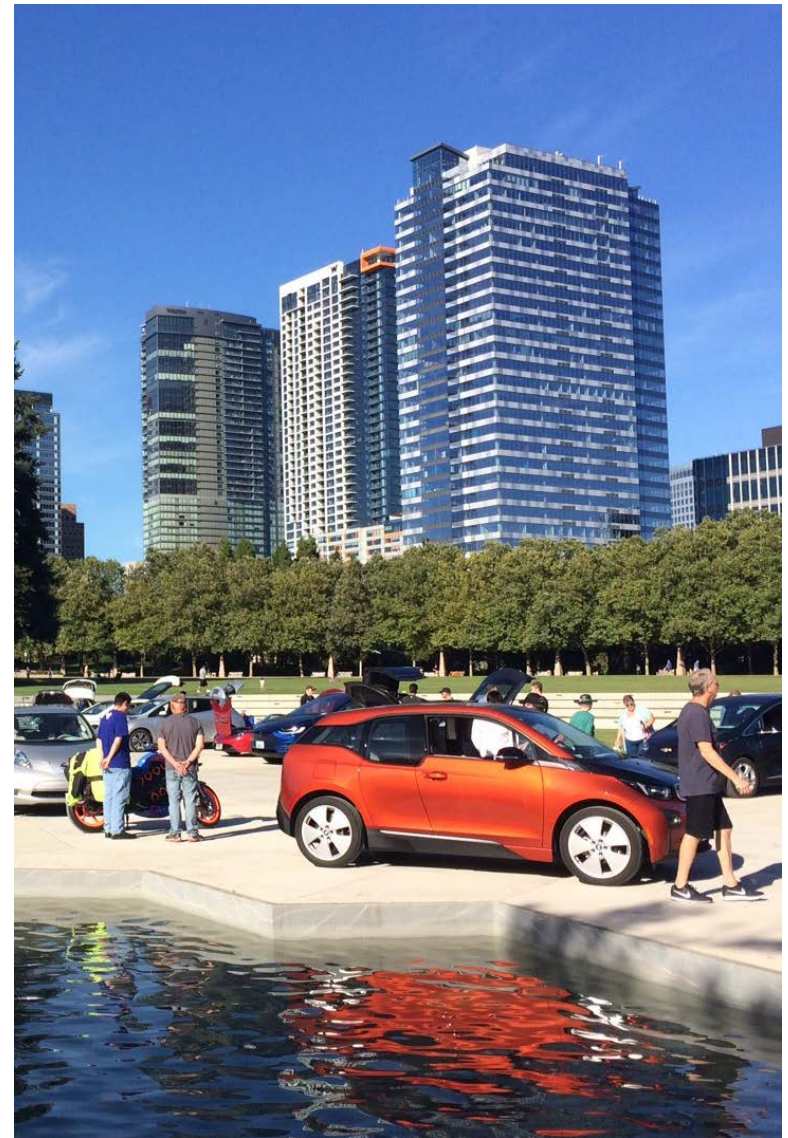
Staff will present an overview of the suggested environmental goals and potential targets for the ESI Strategic Plan and seek **Council input.**





Agenda

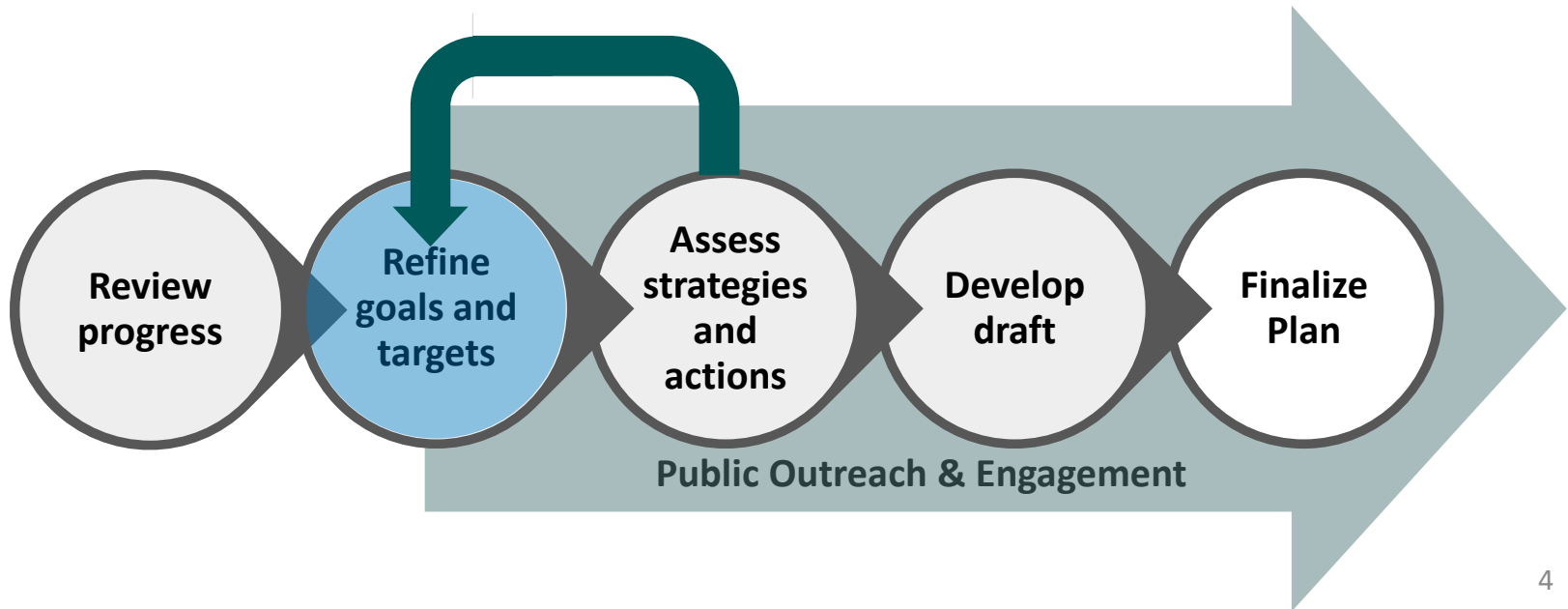
1. Background
2. Suggested ESI goals and potential targets
 - Materials Management & Waste
 - Mobility & Land Use
 - Natural Systems
 - Energy
 - Climate Change
3. Next Steps
4. Direction



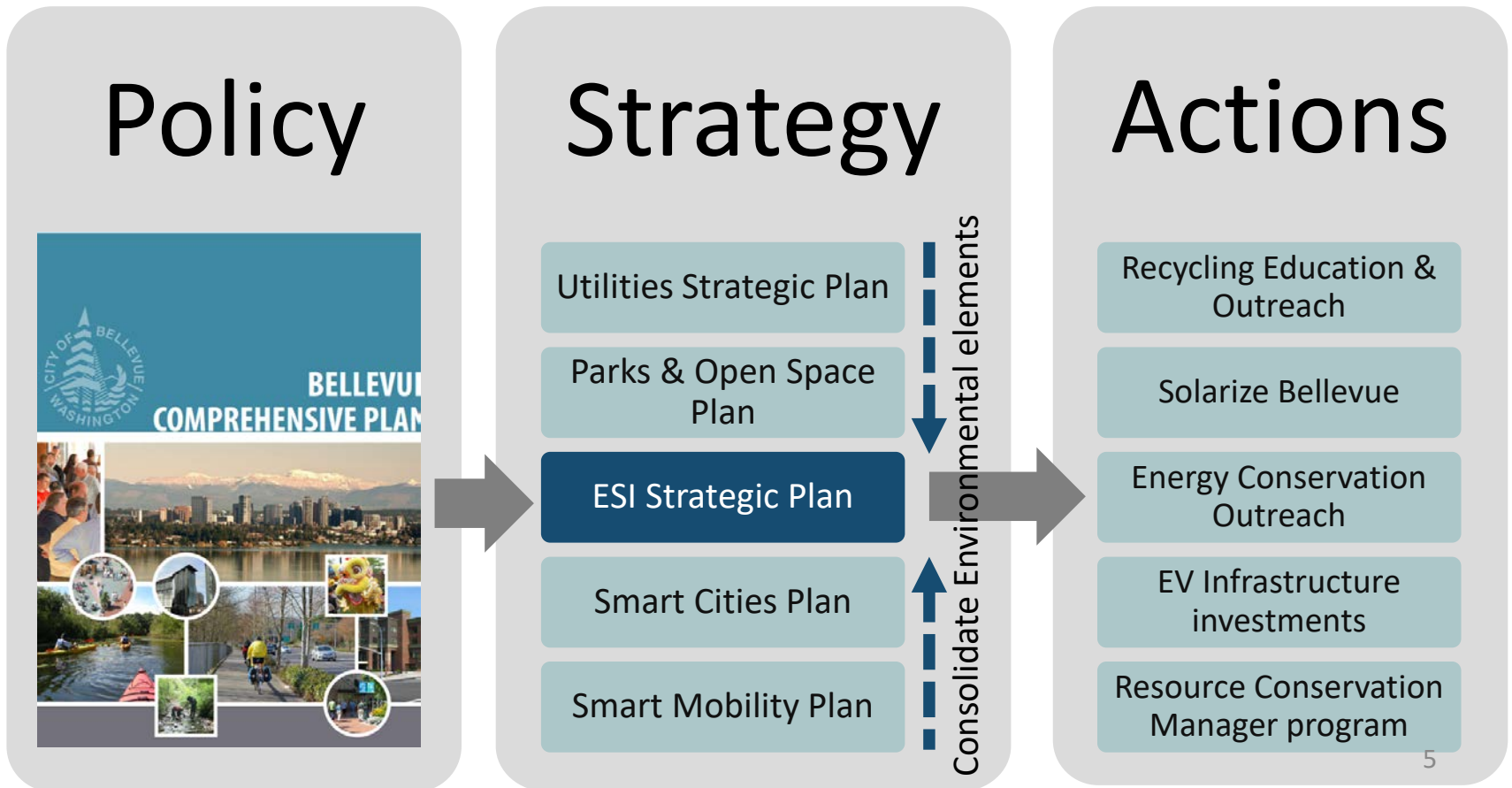
Background

City County Vision Priority #11

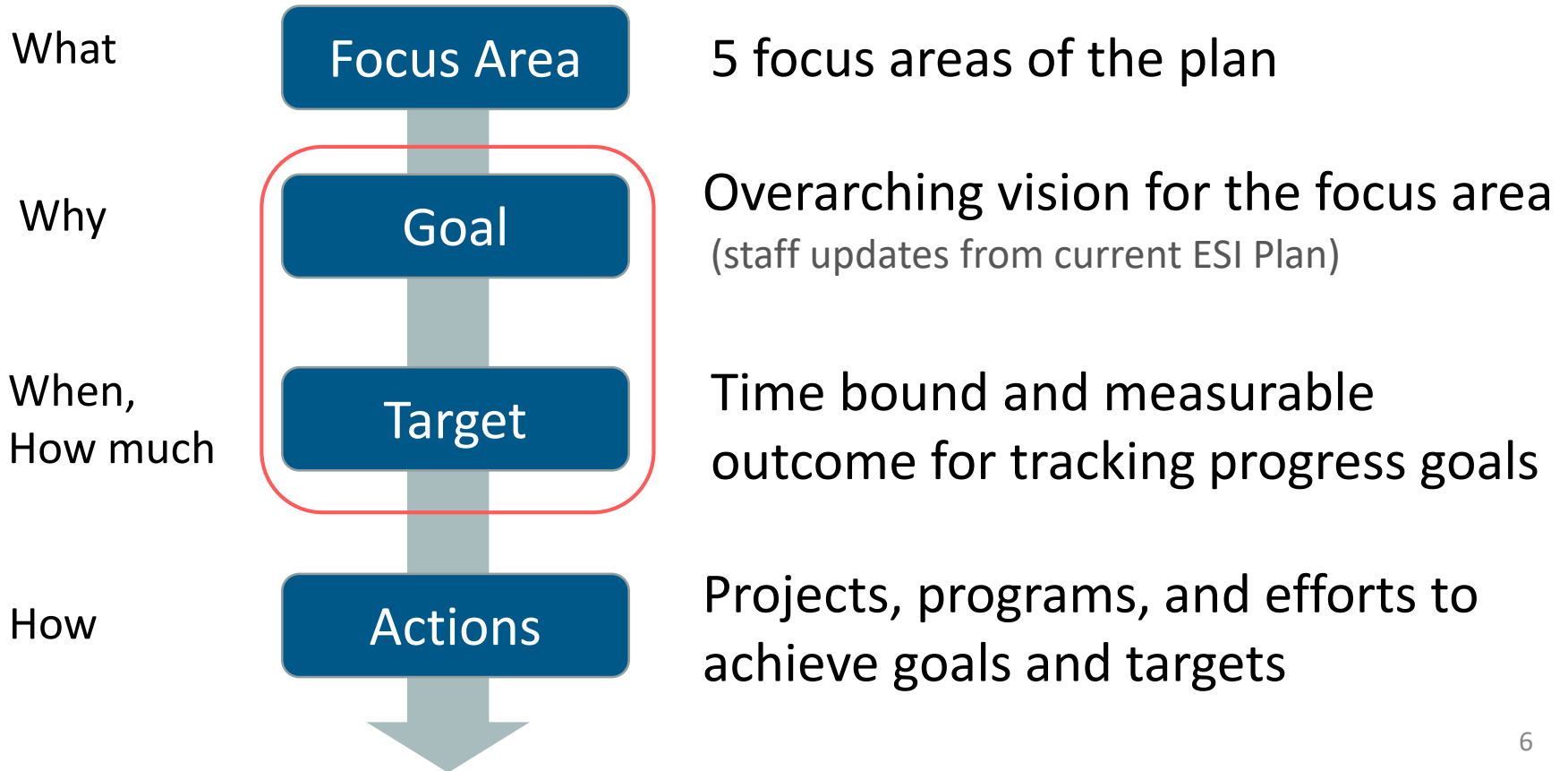
Review progress of ESI and analyze additional steps the City may wish to take to achieve its environmental goals.



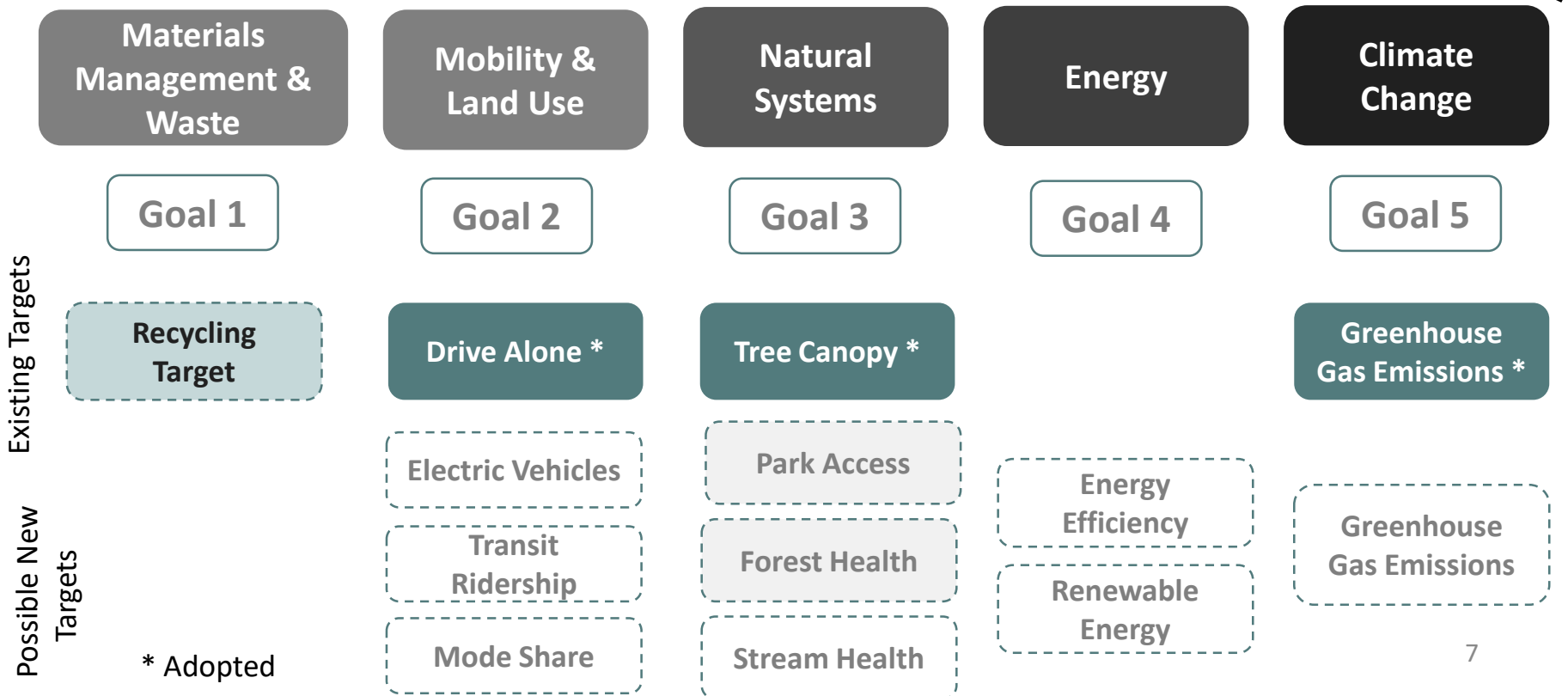
Policy Context



ESI Plan Overview



Focus Areas, Goals, & Targets





ESI Goals

Suggested ESI Goals and potential targets as drawn from peer cities





Materials Management & Waste

Suggested Goal Reduce the negative impacts from consumption and waste practices (staff update from current ESI Plan)

Target	Source	Performance	Trajectory
Divert 50% of all waste to recycling or composting	Utilities Strategic Plan/ ESI Strategic Plan	Needs improvement 40% recycling rate Achieved 80% of goal	No update contemplated Review in progress with King County Solid Waste Management Plan



Mobility and Land Use

Suggested Goal Minimize the environmental impacts of transportation & development by focusing development in growth centers & providing mobility options (staff update from current ESI Plan)

Target	Source	Performance	Trajectory
Reduce drive alone rate for city residents to 55% by 2035	Comp. Plan <i>Transportation Element</i>	Needs improvement Achieved 77% of goal	No update contemplated
Expand the use of EV vehicles citywide	ESI Strategic Plan	On track 100+ new EVs per year in city	New target?
Expand the use of EV vehicles in Bellevue’s municipal fleet	ESI Strategic Plan	On track 3 EVs, 3 plug-in hybrids, 126 hybrids	New target?
Increase bike/ped mode share	N/A		New target?
Increase transit ridership	N/A		New target?



Natural Systems

Suggested Goal Improve & preserve the integrity & health of Bellevue's natural systems and ensure all residents have access to our abundant natural resources (staff update from current ESI Plan)

Target	Source	Performance	Trajectory
Increase tree canopy to 40% citywide	Comp. Plan	Needs improvement Achieved 93% of goal	No new target
At least 70% of public urban forests in class 1 or 2 condition	ESI Strategic Plan	Achieved target	Set revised target
72% pop. live w/in a 1/3 mile of open space	Parks KPI	Achieved target	Set revised target
Improve stream health	ESI Strategic Plan	N/A	New target?



Energy

Suggested Goal Ensure long-term access to clean energy while reducing the fiscal and environmental impacts of consumption (staff update from current ESI Plan)

Target	Source	Performance	Trajectory
Reduce municipal operations energy use by 10% by 2020	Operations Policy Team	On track	New long-term target?
Use renewable energy for city operations	N/A	70% green power for city operations starting 2021	New target?
Reduce citywide energy use	N/A	Reduced by 2% between 2011 and 2017	New target?
Use renewable energy citywide	N/A	100% green power by 2045 (Statewide legislation)	New target?



Climate Change

Suggested Goal Reduce Bellevue's greenhouse gas emissions and prepare and adapt to ongoing climate change impacts (staff update from current ESI Plan)

Target	Source	Performance	Trajectory
Reduce citywide greenhouse gas emissions 7% below 1990 levels by 2012	Mayors Climate Protection Agreement (2006 Res. 7517)	Needs improvement 22% of goal	Set revised target (Per Comp Plan direction)
Reduce municipal greenhouse gas emissions 7% below 1990 levels by 2012	Mayors Climate Protection Agreement (2006 Res. 7517)	Needs improvement 50% of goal	Set revised target (Per Comp Plan direction)



Next Steps

- Consultant to enhance our background research and analysis
- Public outreach and engagement to gather input on strategies to achieve goals
- Return to Council with goals and target recommendations and seek direction



Direction

Staff will present an overview of the suggested environmental goals and potential targets for the ESI Strategic Plan and seek **Council input.**

