



City of Bellevue

Ashwood Park Master Plan Update

Pam Fehrman
Zachariah Collom
Parks & Community Services

Parks & Community Services Board | March 12, 2024



Ashwood Master Plan Update

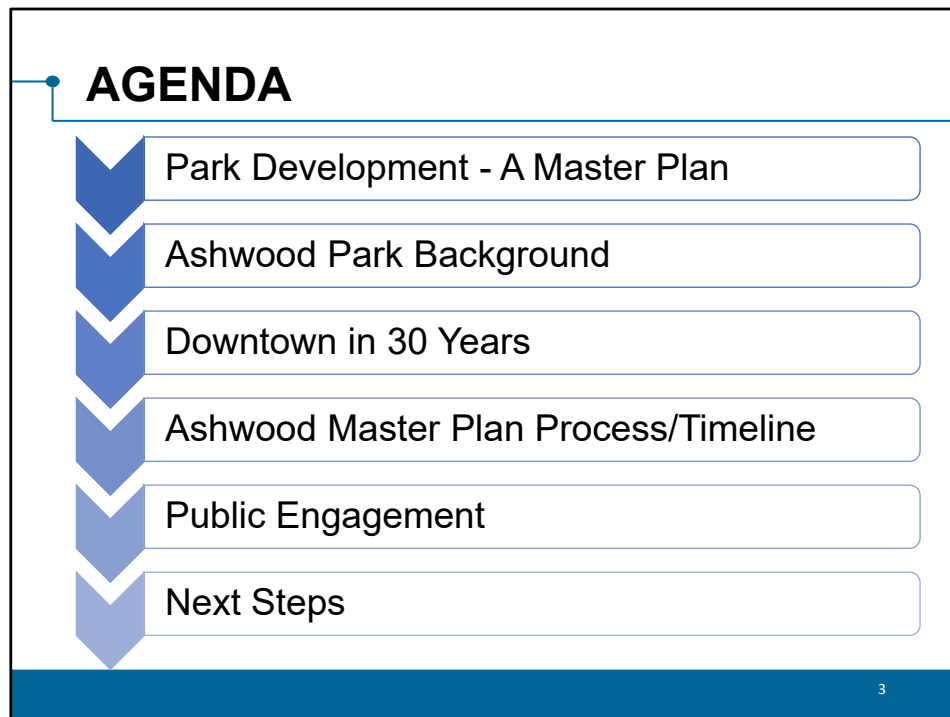
Parks & Community Services Board Role

2

The Parks & community Services Department Planning and development division is initiating work to update the Ashwood Park Master Plan.

We're looking to the Parks & Community Services Board to serve as the primary advisory body for this work and we'll ultimately be asking you to provide a master plan recommendation to the City Council.

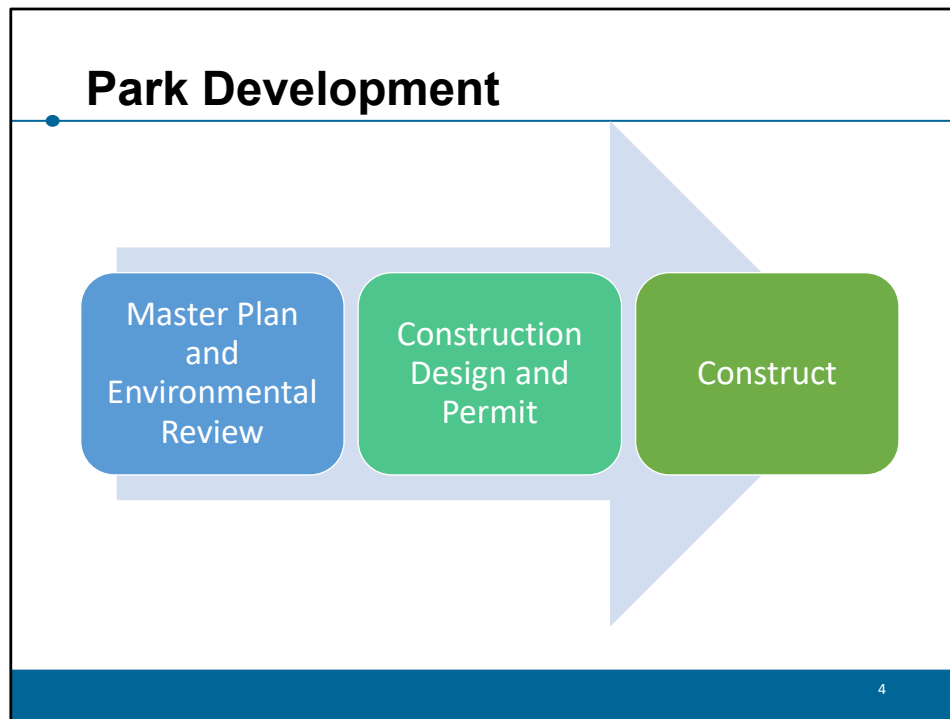
We'll work to provide you updates regarding our planning process and community feedback throughout the process at key project milestones – and invite you to join us at the community outreach events.



At your meeting tonight, Zachariah and I will provide the Parks & Community Services Board

- an overview of typical Park planning and development.
- A bit of background regarding ashwood park
- An overview of the changes to our downtown in the last 30 years
- The estimated Ashwood Park Master Plan update and timeline
- Our public engagement plans and
- Next steps before we ask you for your questions and comments

Aas well as project background, current status, public engagement plan and next steps. This planning process will be led by Parks & Community Services staff, supported by a consulting team led by McCleod Record Landscape Architects.



- There are Three Major steps to developing a new City park that includes, 1. Planning (working with the community to develop a park master Plan for the park, then 2. Construction design– Drawings and specifications as well as permitting before we 3. begin Construction of a park. (depending on the complexity of park development each of these steps can take one to two years or more to construct)
- The master plan process takes into consideration the City's comprehensive Plan, park & open space system needs, Community input, Pk Brd review and recommendations, environmental impacts and is ultimately adopted by the City Council.
- The purpose of the Master plan is to provide a consistent and long-term conceptual vision for phased development of a park over time.

- Depending on the complexity and cost of park development, parks can take decades to reach their full Master Plan vision. As implementation occurs over time, the park is designed to be consistent with the principles and park elements of the master plan.
 - A good example of a multi-phased project that took over many years is the Downtown Park: originally designed in1985 MP, 1997 MP update and
 - It wasn't until 2017 (32 years) that the circle was complete -
 - And then in 2021 and 2023 when the NE Corner of Downtown was completed.... and the art installed.

With that general overview of park development -

I'd like to introduce Zachariah, the project manager for the Ashwood Master Plan Update project who

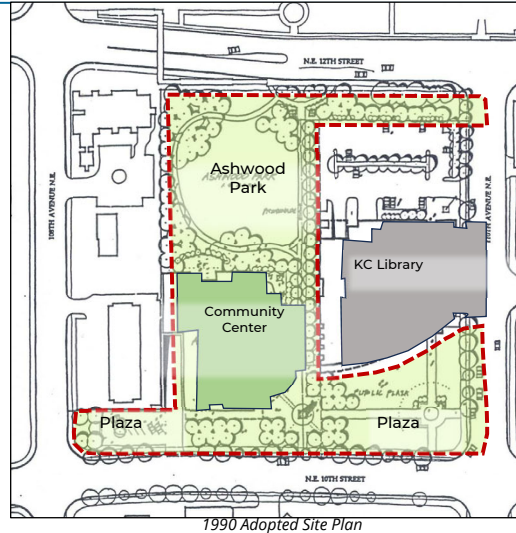
Ashwood Park



5

- Ashwood park located in Downtown Bellevue at 10820 NE 10th Street. It is 3.5-acres in size including the plaza in front of the library and the plaza in the south west corner and a vegetation buffer strip to the north of the library parking lot.
- The site is adjacent to the King County Regional Library – Bellevue to the east with two residential towers and KidsQuest Children’s Museum to the west.
- The study area for master plan update is the 2.5-acre central playfield.

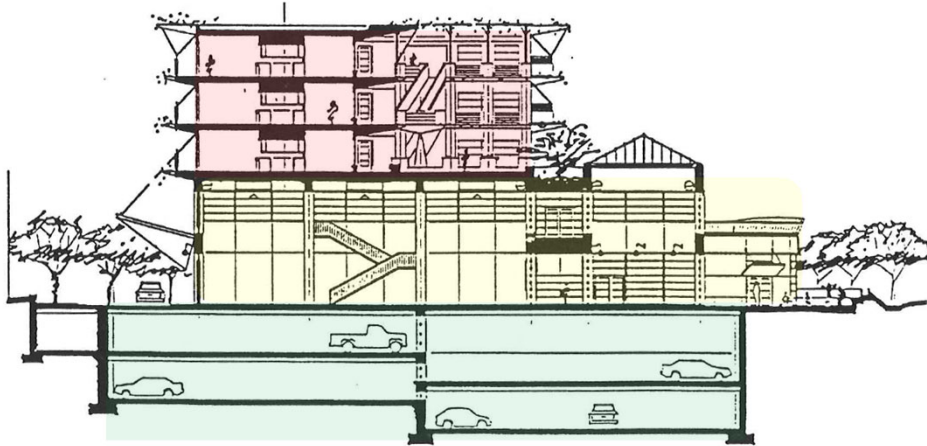
1990 Conceptual Site Plan



6

The 1990 council adopted conceptual site plan consists of approximately 1 acre of green space, the plaza in front of the library, a plaza in the southwest corner and a community center

1990 Conceptual Site Plan (Cont.)



7

As this sectional drawing depicts the

- Community Center consists of 2 stories
- With 3 stories of Affordable housing above and
- Underground Parking with access via NE 10th st

Although the building was never built the plazas were.

Ashwood Park



8

Plaza Development was Completed

On the right is the statue of Gandhi on display in the Library plaza that was built in 1996.

On the left is the Ashwood plaza south of the 1020 building that was built in 2008

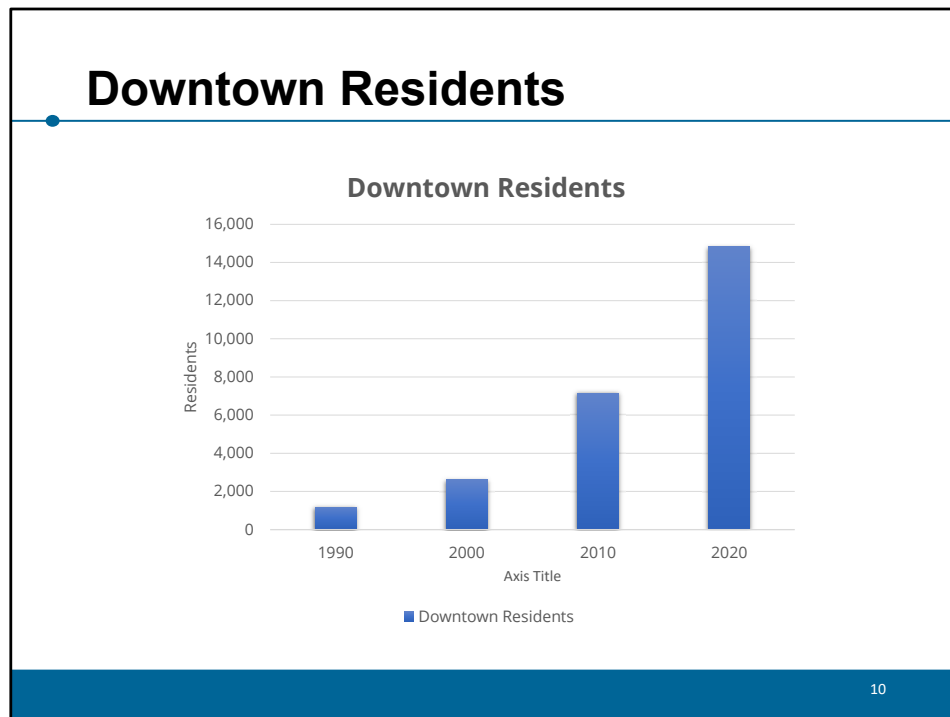
(Master plan was Approved by Council, 4 April 2005, Resolution 7162)



Downtown Bellevue – 30 Years

9

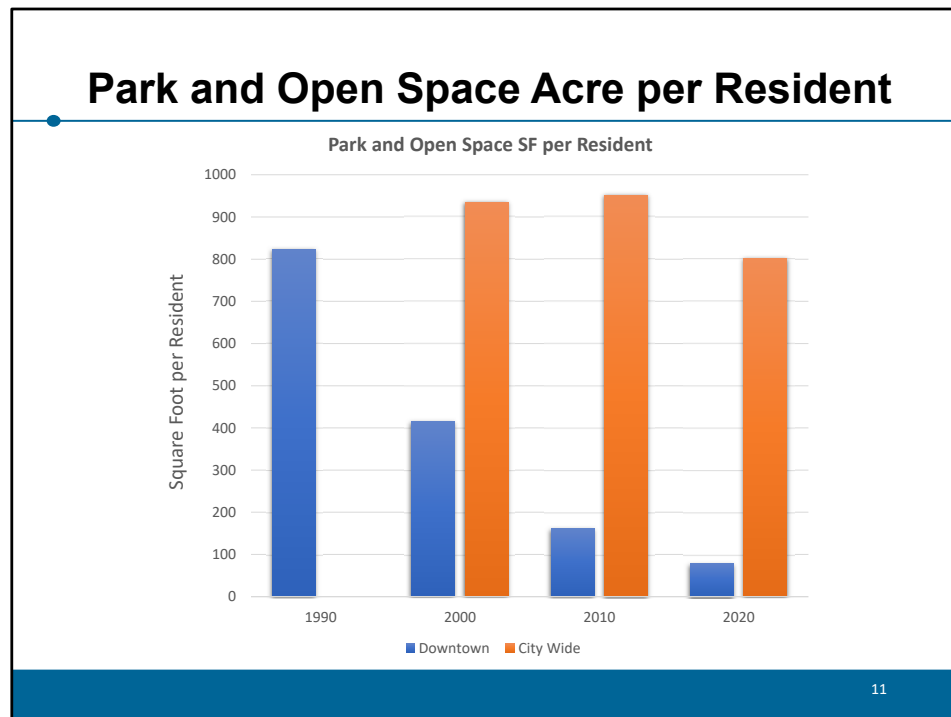
Over the past 30 years, Ashwood Park has served the downtown community in its interim condition as a place for structured and unstructured recreation events.



In that time, our city and downtown area have experienced significant growth. The number of Residents living in downtown has multiplied by 13, as illustrated by the graph.

Of that:

- Children living in downtown has grown 18 times to 1,263 in 2020
- Daily employees in downtown has tripled, to 62,659 in 2022.
- The top six languages spoken in the Ashwood area are English, Japanese, Mandarin, Russian, Spanish and Korean.
- The proportion of race and ethnic groups other than White in Bellevue has more than tripled from about 14.7% of the population in 1990 to just over 50% as of 2019.
- ~~Downtown Parks and Open Space has only increased by 4.61 acres since 1990, or only 20%~~



While the downtown residential, working and playing population in our urban center has grown, the park and open space has not seen the same growth. In 1990 downtown had approximately 800 square feet of park space per resident, in 2020 there was approximately 100 square feet of park space per resident. Whereas the citywide square foot of park space per resident has decrease from just over 900 to about 800 square feet. The downtown parks acreage has only grown 4.61 acres or about 20%.

During this time planning initiatives, public and private development proposals, and community requests for the park have suggested a range of uses that differ from the adopted plan. These suggestions include; an Arts ad Cultural center, a fire station, and requests to preserve and enhance the open green space.

Given community input, the undeveloped state of Ashwood Park, and

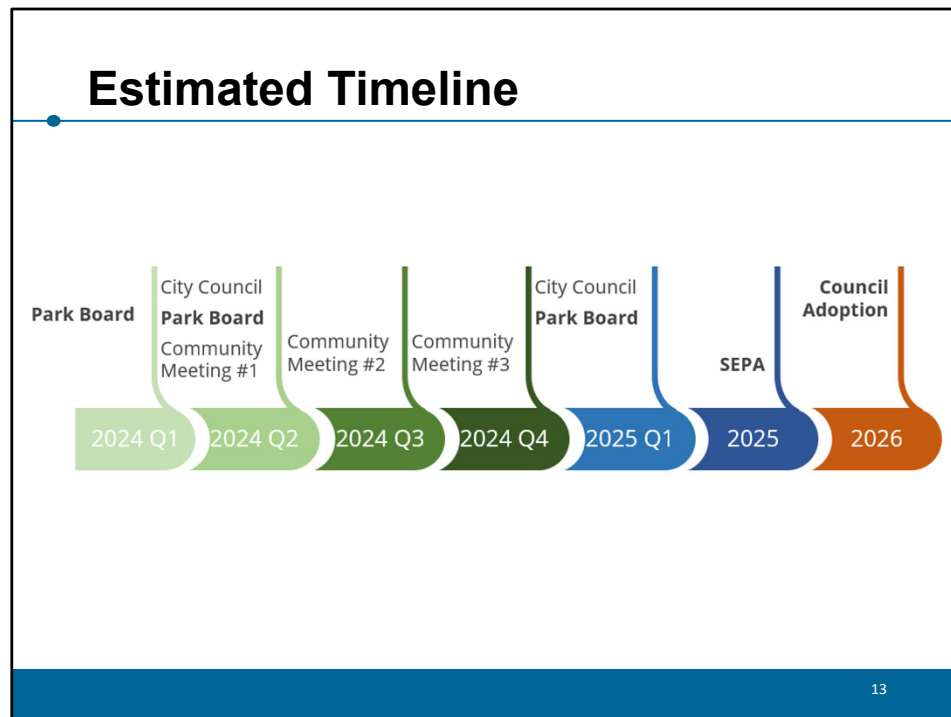
the significant urban growth that Downtown Bellevue has experienced, City Council directed a master plan update of Ashwood Park.



Master Plan Process/Timeline

12

We anticipate the master planning process for Ashwood Park to take approximately two to two-and-a-half years to complete. This planning process will be led by Parks & Community Services staff, supported by a consulting architectural, urban design and engineering team led by McCleod Record Landscape Architects.



Before you is an estimated timeline – This is estimated as we'll want to remain efficient but also responsive to the needs of the community, park board and Council feedback

The first item on the timeline is this evening's Park board meeting which serves as the project Kick-off.

Also on the schedule is a Pop-up event scheduled to help bring awareness to the project

Our first Community meeting will introduce the project, share site analysis and hear from the community on their development preferences, park element preferences and concerns

We will look to share community responses with Council and Park Board for feedback before proceeding to the next community meeting where we hope to share some design alternatives based on what we hear from council, park board, and the community

We will continue work to refine the master plan conceptual layout

of the preferred park elements, until we rtn

To request park brd to recommend a preferred master plan to City Council

Get direction from Council to proceed with Environmental review per the State Environmental Protection Act (SEPA) and once that is complete, return to City Council for adoption of the master plan



Public Engagement

14

Our public engagement is guided by our Public Outreach Plan.

Public Outreach Plan

Goal and objectives

- Provide a range of opportunities for community input
- Generate broad reaching, cross cultural input
- Engage community stakeholders
- Keep public, Parks Board, and City Council informed

15

The Goals of the Public Outreach Plan consist of:

- Providing a range of opportunities for the community to be included and inform the park planning process and preferred master plan for Ashwood Park
 - Including Community meetings, pop-up events, Park Board and City Council Meetings
- Generate broad-reaching, cross cultural, and multi-generational public input, providing materials that are translated and Engaging community stakeholders including the BDA, residents, businesses, neighbors, KidsQuest, King County Library System
- And to keep the public, Parks & Community Services Board and City Council informed through
 - Mailings, emails, social media, press releases, surveys, and the project website

Public Outreach Plan (Cont.)

Communication Strategies:

- Website:

Bellevuewa.gov/ashwood-master-plan

- Social Media
- Mailing and Posters
- Media Outreach



16

Our public outreach communication strategies consists of:

- Our website, bellevuewa.gov/ashwood-master-plan, we list the upcoming meetings, past meetings with presentations, our anticipated timeline and general project information.
- Through our PIO we will be releasing information on the City's official social media accounts such as Facebook, X (formerly Twitter) and Nextdoor.
- Before each community meeting, a mailing will go out to residents ~~within 1/3 of a mile of the park.~~
- Outreach will be coordinated with media – including City Communications "It's Your City", the "Bellevue Reporter", and Neighborhood News

Public Outreach Plan (Cont.)

Community Events:

- Community Meetings
- Pop-up Events
- Focus Groups/Stakeholder Meetings
- Park Board and City Council Meetings



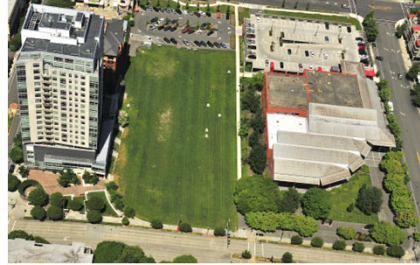
17

The plan is to have 3 formal community meetings through out this process, the first one on April 3rd.

Currently we have our first Pop-up event this Saturday March 16th.

Focus Group and stakeholder meetings are being schedule and will occur on an ongoing basis.

Park Board and City Council meetings are planned through out the process to keep the Board up to date and at decision points.



Next Steps

- March 16, 2024 - Pop-Up event at the Bellevue Library 1-3 pm
- April 3, 2024 – Community Meeting #1 at the Bellevue Library from 6-7:30 pm

18

We currently have an informational pop-up event to build project awareness and invite participation this Saturday at the Bellevue library from 1-3, followed by our first meeting with the community scheduled on April 3rd, from 6 to 7:30 pm at the library in Room 1

We would like to invite you to participate!



Questions and Comments?

19

I would like to thank the board, and ask for any questions or feedback you may have at this time?