

# Eastrail Corridor Update

Bellevue Transportation  
Commission

February 8, 2024

Mike Ingram, Senior Planner  
Transportation Department



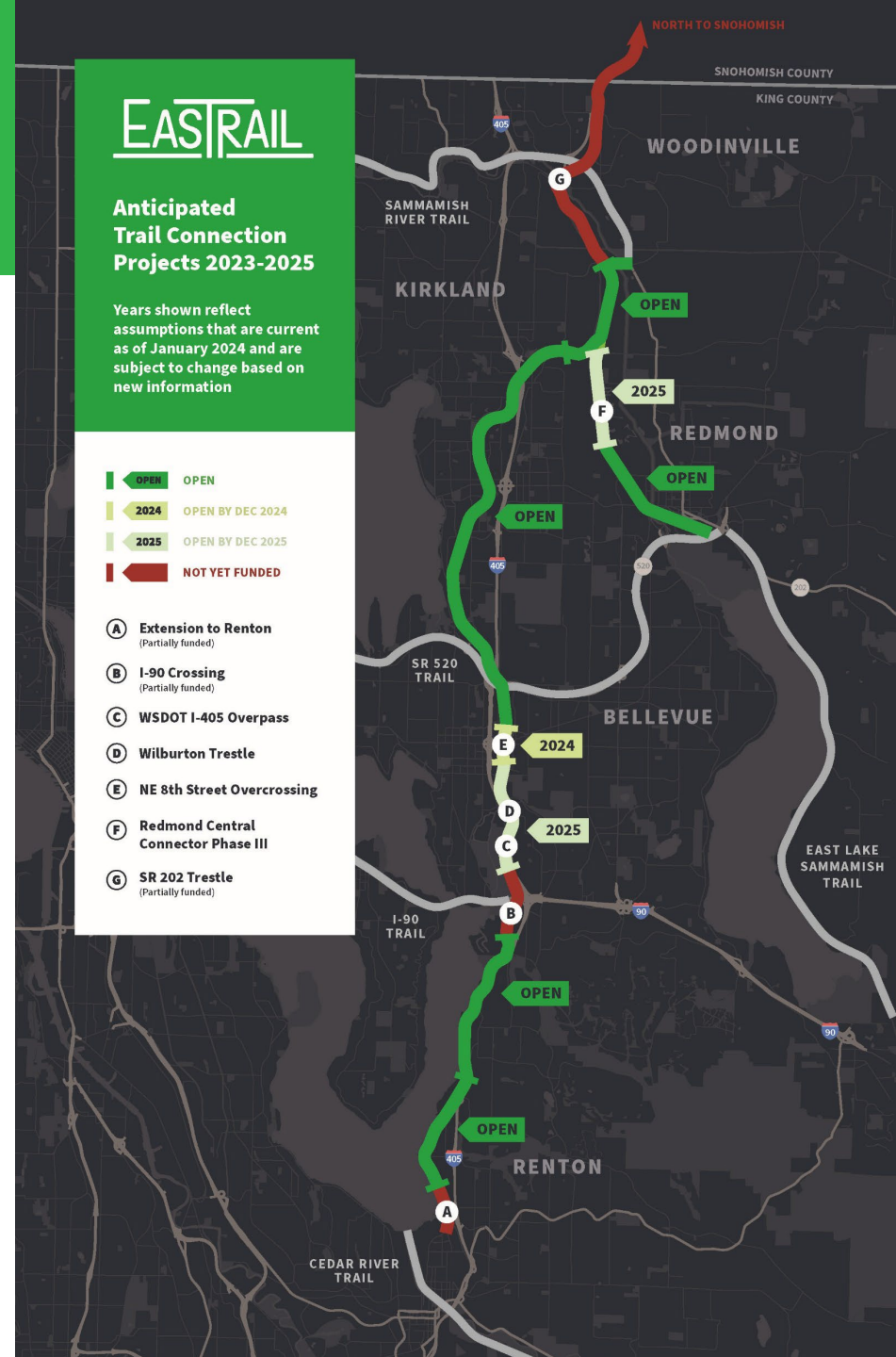
# Tonight's Presentation

## Eastrail trail: Current status + What's in pipeline

- North of Bellevue
- South of Bellevue
- Northeast of Bellevue (Redmond)
- In Bellevue, projects and related planning work (north to south)

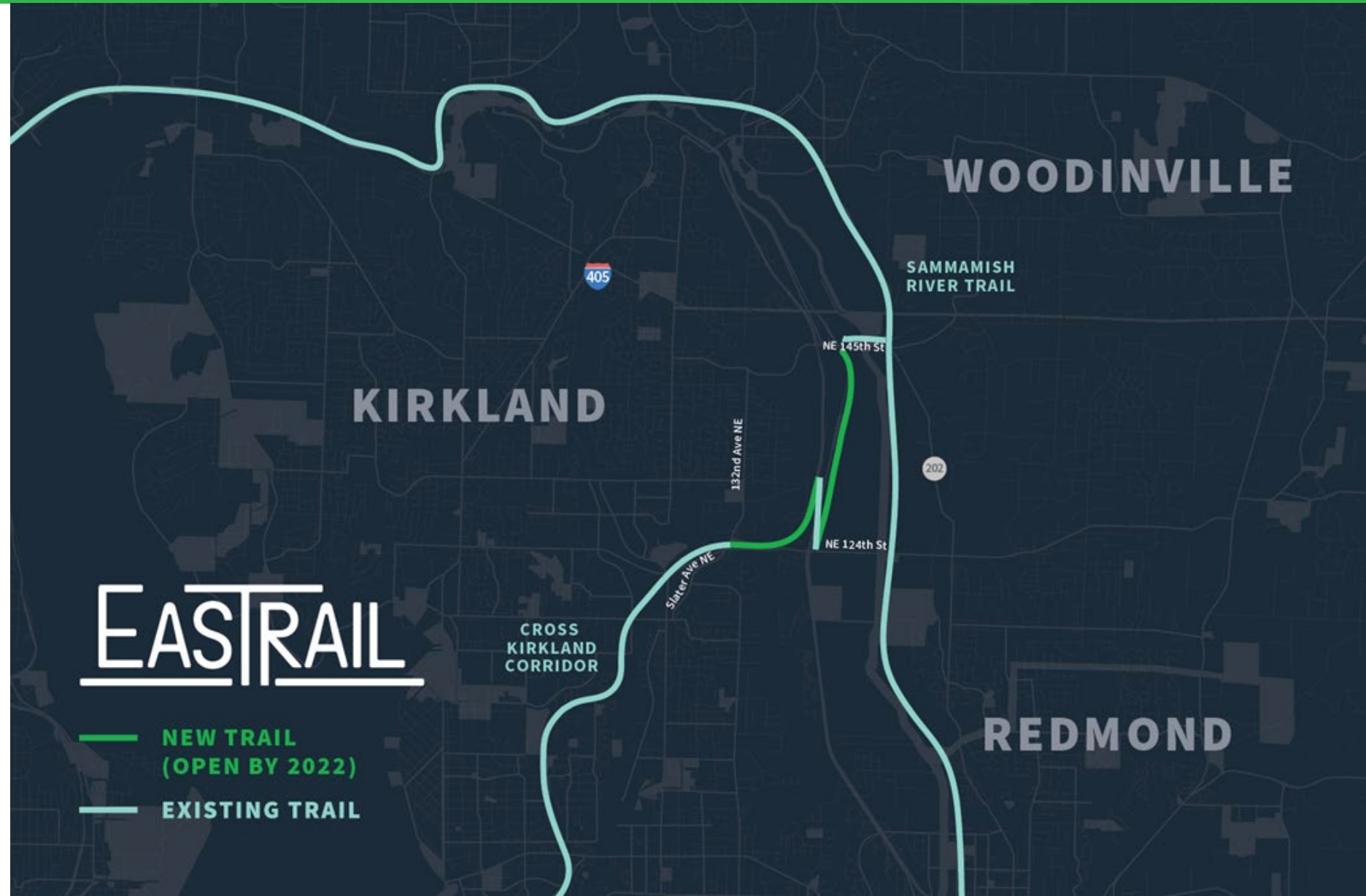
In addition to the trail, other owner interests in the corridor are for utilities (fiber, wastewater, PSE) and transit (Sound Transit easement).

Other names for segments of the Eastrail are Cross-Kirkland Corridor, Redmond Central Connector.



# Eastrail Up North

Connection in  
place to  
Sammamish  
River Trail





# Kirkland to Woodinville Trail

## Eastrail Up North

Connection in place  
to Sammamish  
River Trail

*Efforts by*

- Kirkland
- King County
- Woodinville





# Eastrail Up North

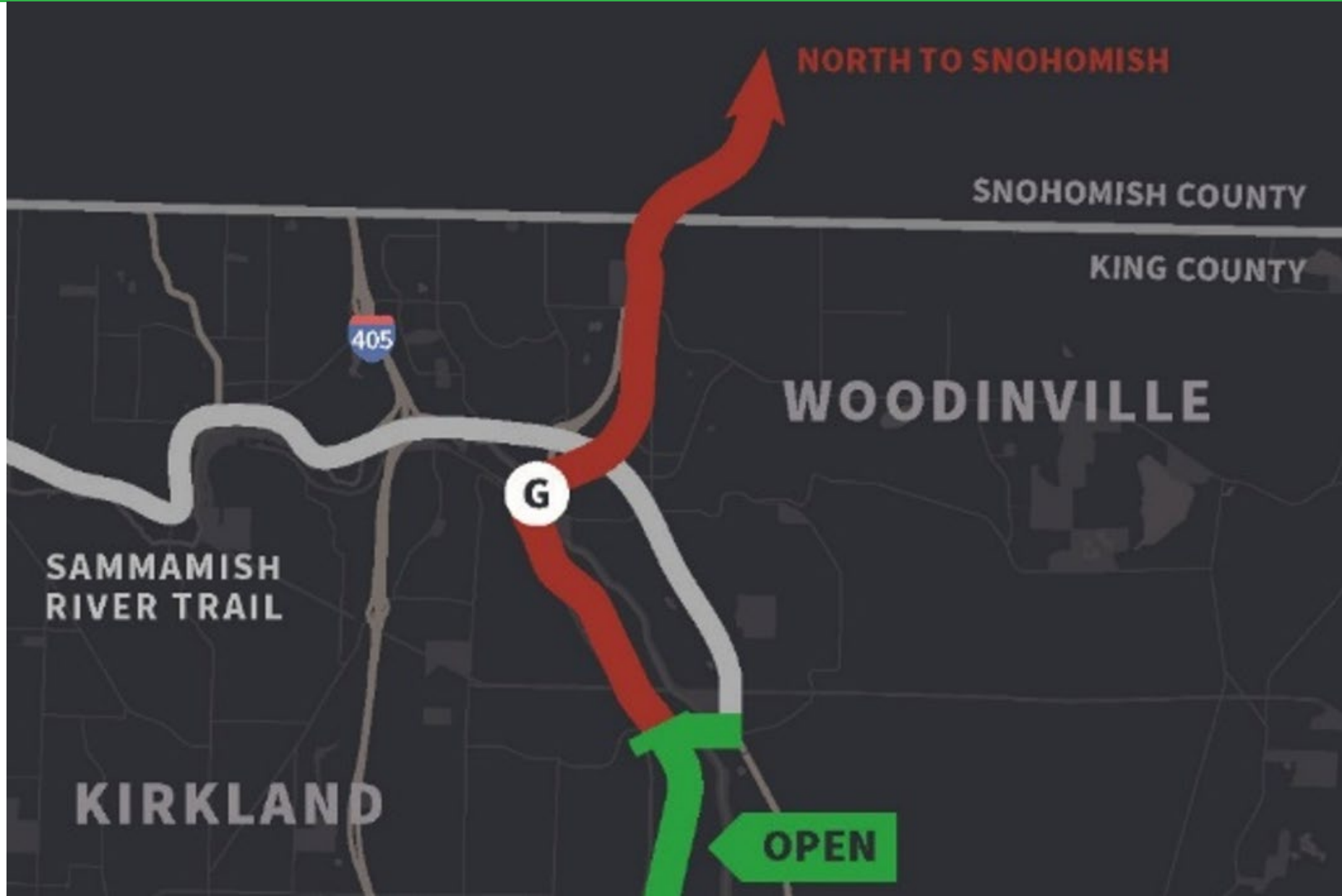
## Future phases

- Woodinville
- Snohomish County



Woodinville Rail Removal

**EASTRAIL**





# Totem Lake Connector Bridge

KIRKLAND

Ped-bike bridge crossing one of Kirkland's most complicated & congested intersections: Totem Lake Boulevard and NE 124th Street.



**OPENED: July 2023**



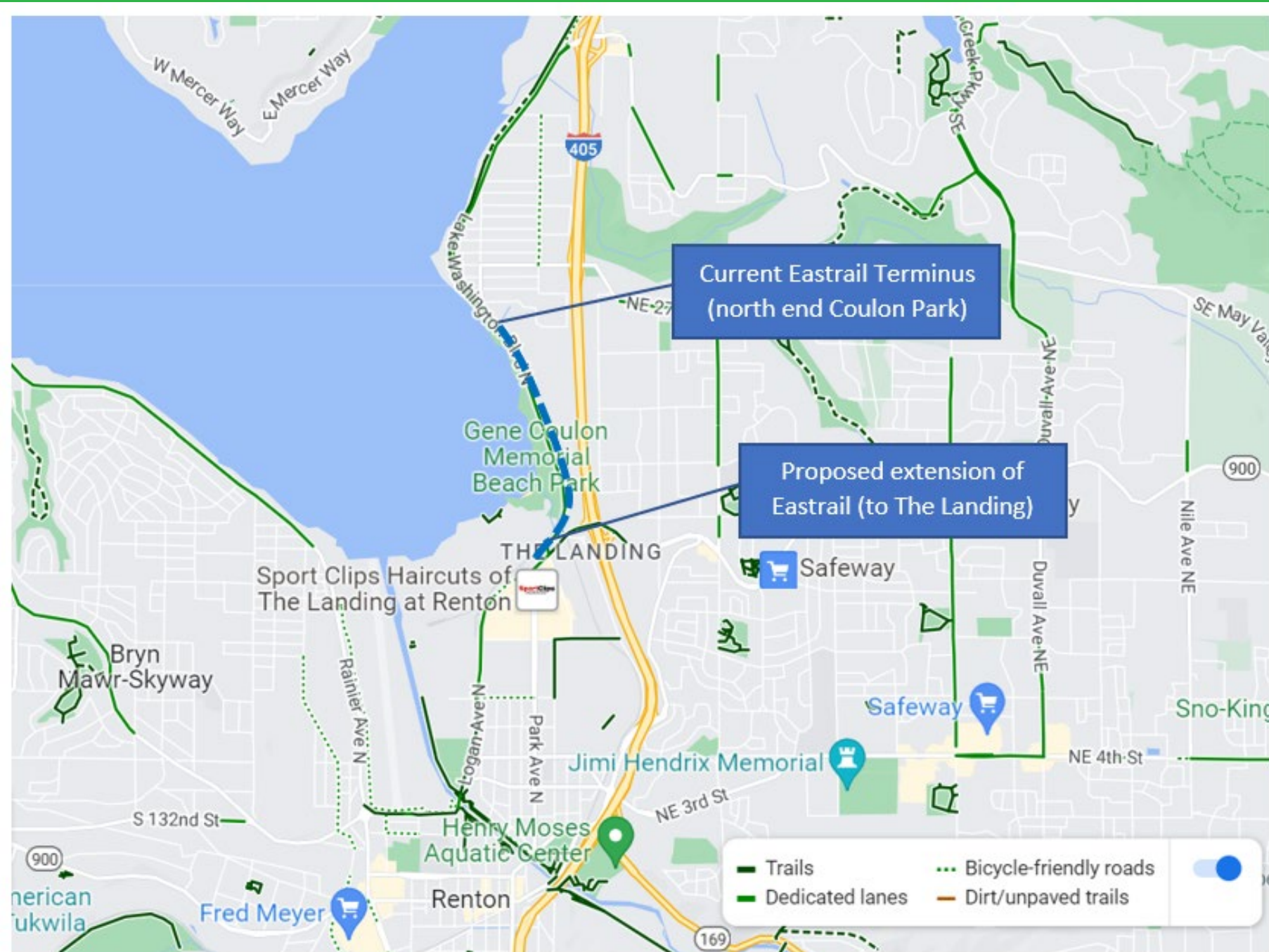


# Eastrail Down South

Current terminus at  
north end Coulon  
Park

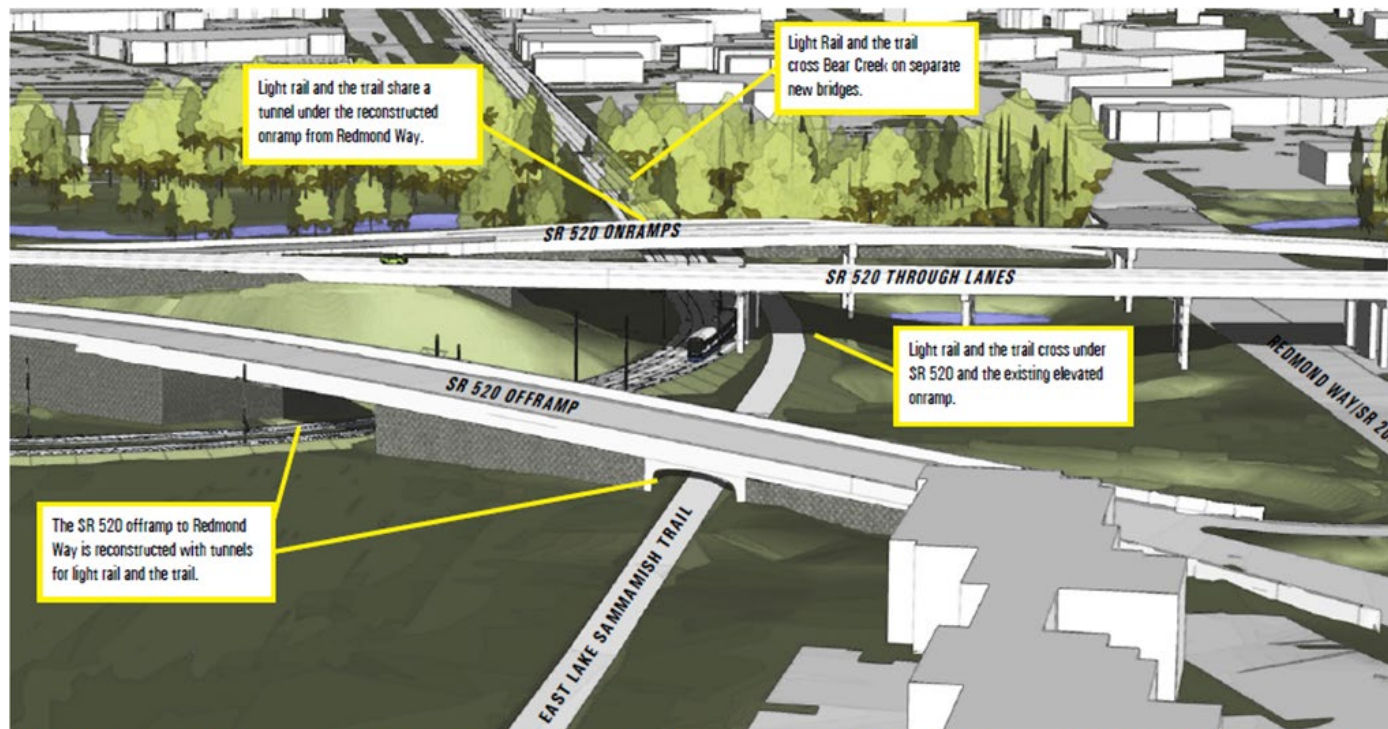
Seeking acquisition  
from BNSF to extend  
to south end of Park/  
Southport complex.

**EASTRAIL**

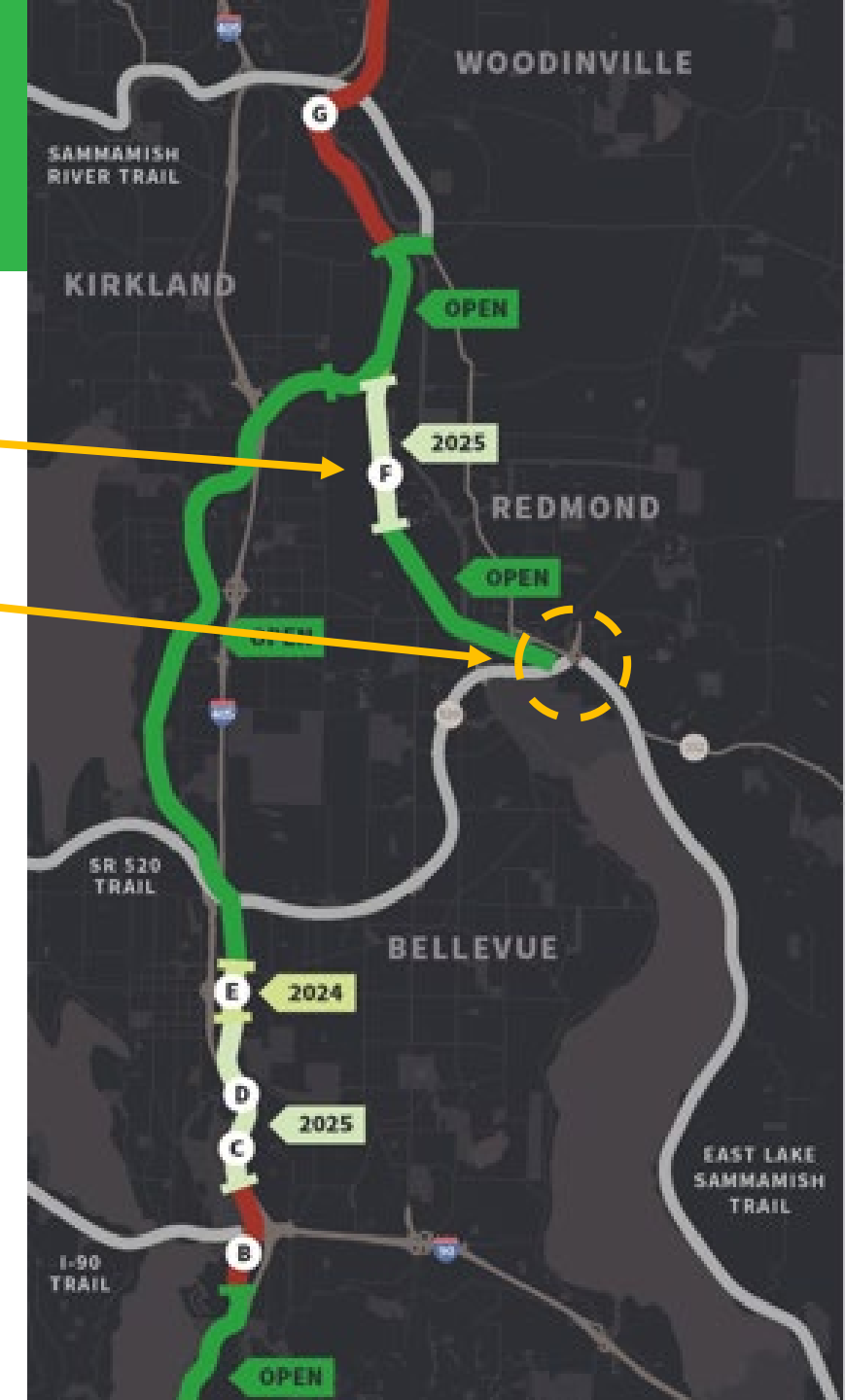


# Eastrail in Redmond

- North segment now under construction (“F” on map), follows west side of Willows Rd corridor
- Connection under SR 520 to East Lake Sammamish Trail now under construction (orange circle on map)



The light rail connection between southeast Redmond and downtown will create a corridor to extend the East Lake Sammamish Trail through the SR 520 interchange.





# Eastrail in Bellevue



Segment open in north Bellevue, BelRed to Kirkland.

Segment open in South Bellevue, Coal Creek to Renton.



→Entire corridor, Renton to Woodinville, expected to be open for use by 2026, except segment over I-90, which is currently unfunded.



# Two connections in north part of Bellevue

*Completed:* Eastrail to Northup Way  
(Lead: Eastrail Partners and King County)

*Coming soon:* Eastrail to Spring Blvd  
(Lead: City of Bellevue)





# 520 Trail/Northup Way Connector

EASTRAIL PARTNERS/KING COUNTY

- New trail ramp connecting the Eastrail to the SR 520 Trail corridor at Northup Way.
- Primary funding by REI and Meta/Facebook (\$1 million each). King County paid balance needed.



Trail opening on December 1, 2023

**EASTRAIL**

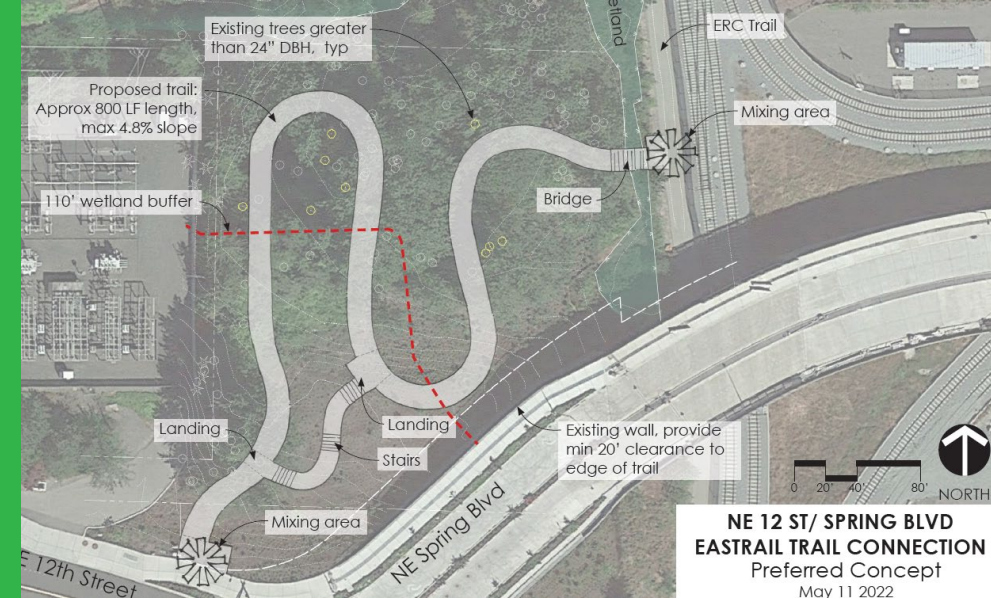




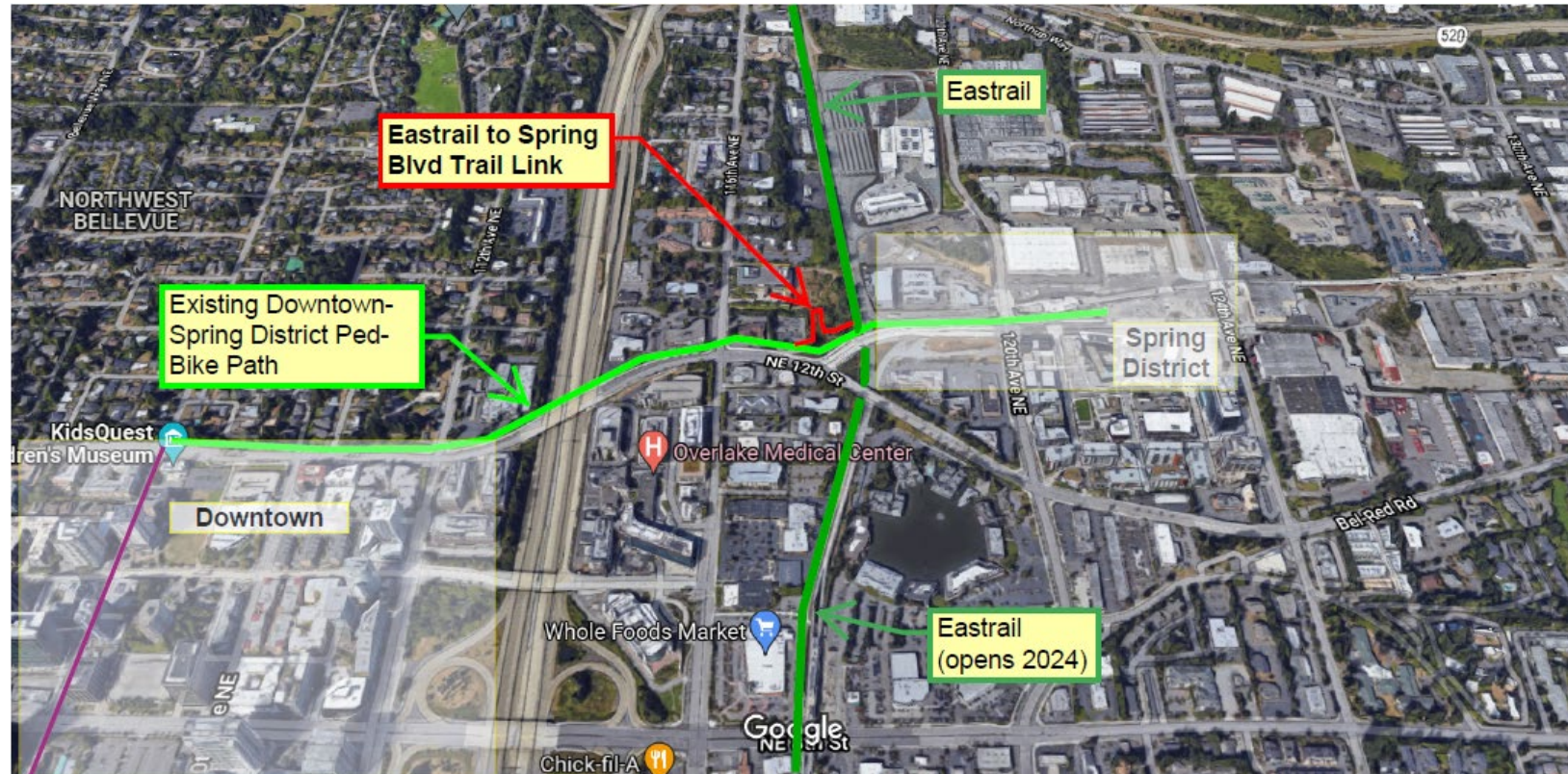
# Eastrail to Spring Blvd Connector

## BELLEVUE

- Connects north-south Eastrail to east-west NE 12th St/Spring Blvd path
- Provides efficient route to BelRed/Spring District (to the east) and Downtown (to the west)
- Traverses 34' grade difference
- Funding secured via PSRC grant process (two grants, one for design, another for construction)



Design nearly complete; construction anticipated in 2025





# Eastrail NE 8<sup>th</sup> St. Crossing

## KING COUNTY

- Now under construction
- Provides critical connection to Wilburton Light Rail Station
- Includes Japanese American Agricultural Heritage commemoration elements



STEEL CUT-OUTS (LOOKING EAST) - 3D VIEW  
SCALE: 1/80





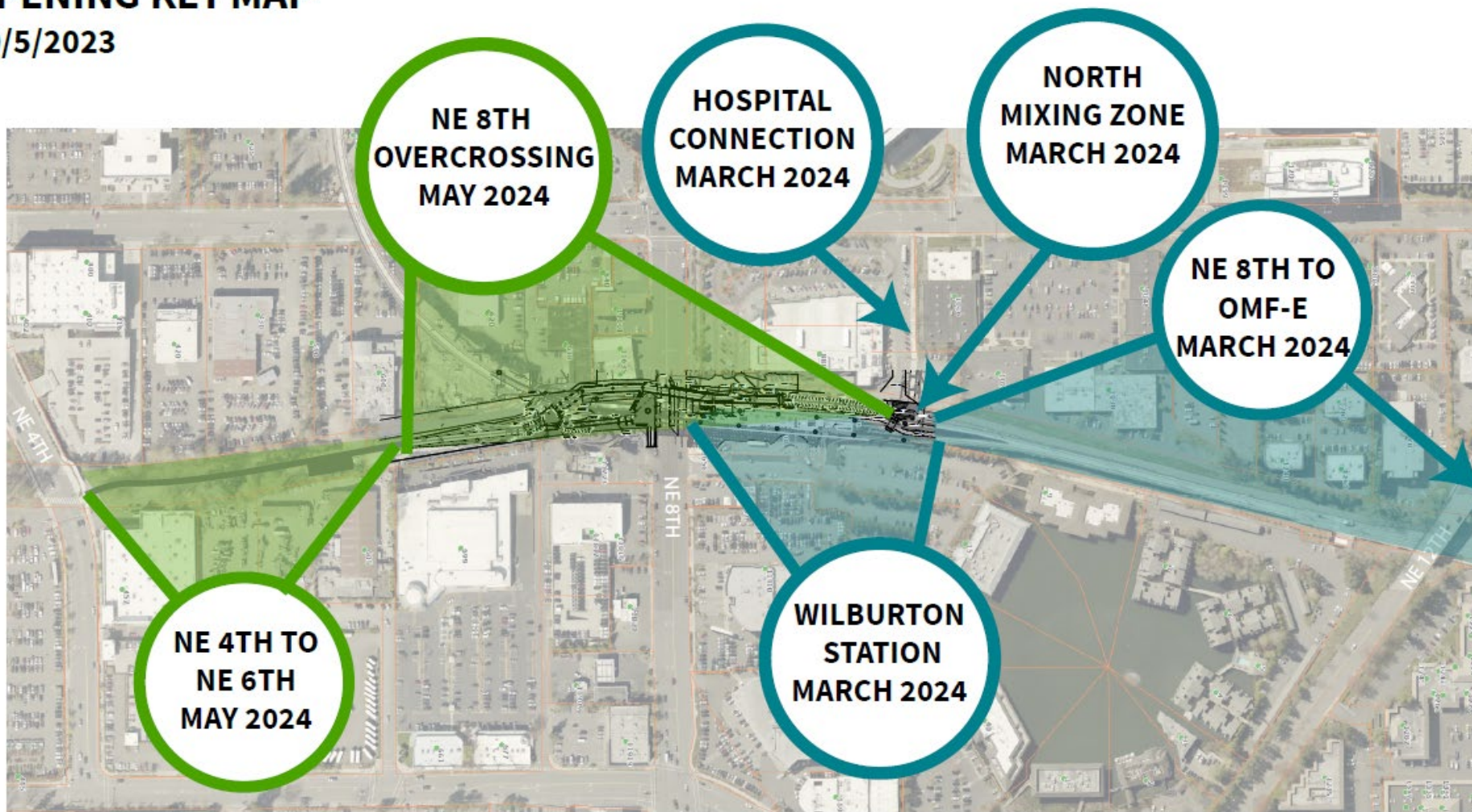
# Eastrail NE 8<sup>th</sup> St. Crossing Construction





# **DRAFT NE 4TH TO OMF-E OPENING KEY MAP**

10/5/2023





# Central Wilburton Segment

KING COUNTY

¾ Mile gravel trail connecting NE 8<sup>th</sup> Bridge to Wilburton Trestle

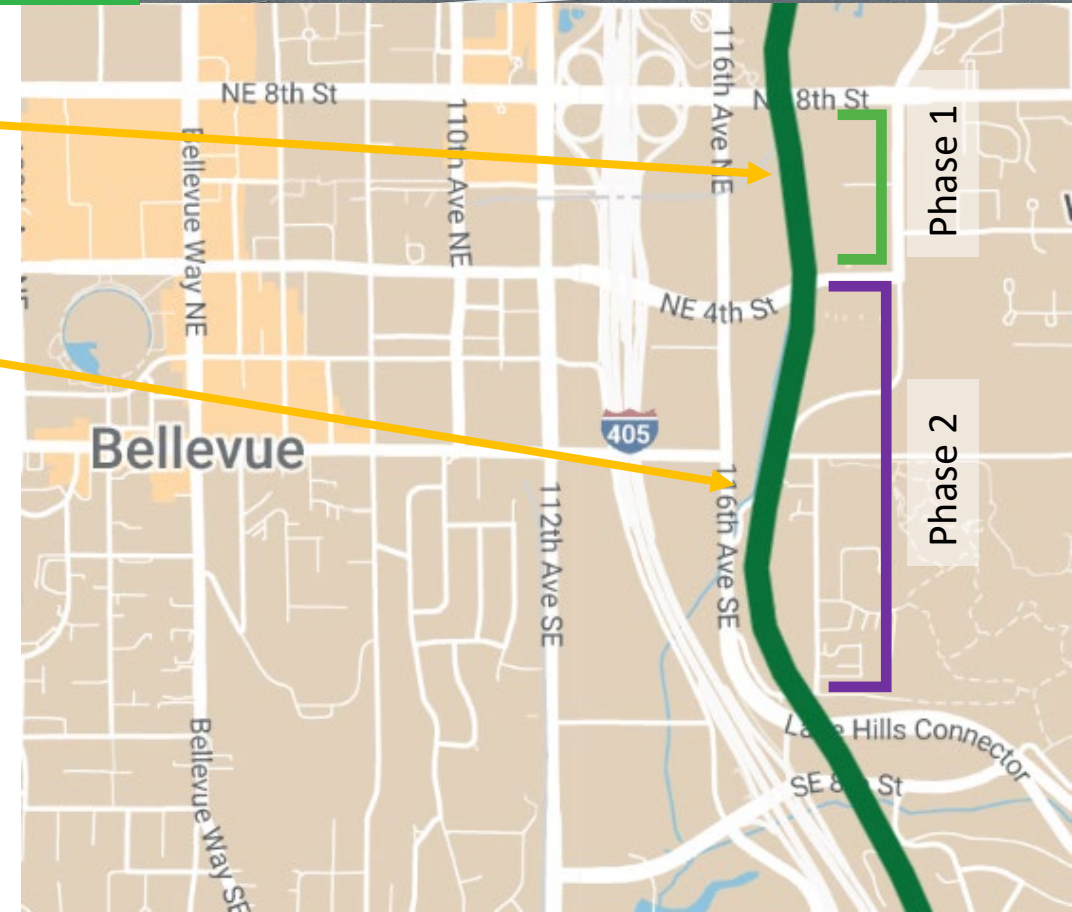
Funding Source: Amazon \$2.5 Million



**Phase 1:** NE 8<sup>th</sup> Street to NE 4<sup>th</sup> Street  
Opening: Spring 2024

**Phase 2:** NE 4<sup>th</sup> Street to SE 5<sup>th</sup> Street  
Opening: Late 2025  
Includes a new signal at the SE 1<sup>st</sup> Street crossing.

Will fill in remaining gap to complete an uninterrupted trail from 118<sup>th</sup> Ave SE/Mercer Slough to Kirkland (and beyond).





# Wilburton Eastrail Framework Plan

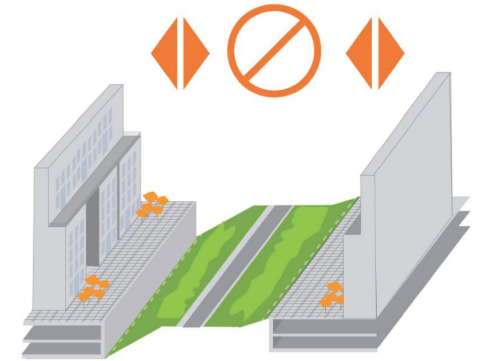
NE 12<sup>th</sup> Street to SE 5<sup>th</sup> Street/Trestle

Opportunity for integration of adjacent new development with the trail corridor.

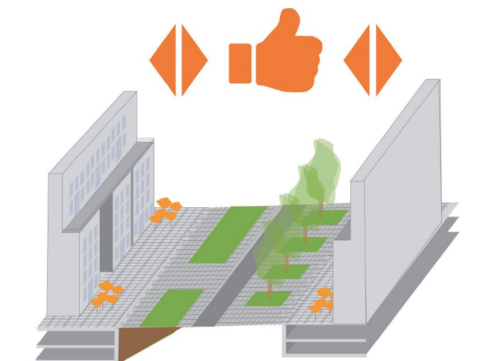


Development concept from Wilburton CAC, 2018

WHAT IF OUR  
CORRIDOR NEEDS TO  
RE-CONNECT?



WHAT IF OUR  
CORRIDOR NEEDS TO  
RE-CONNECT?



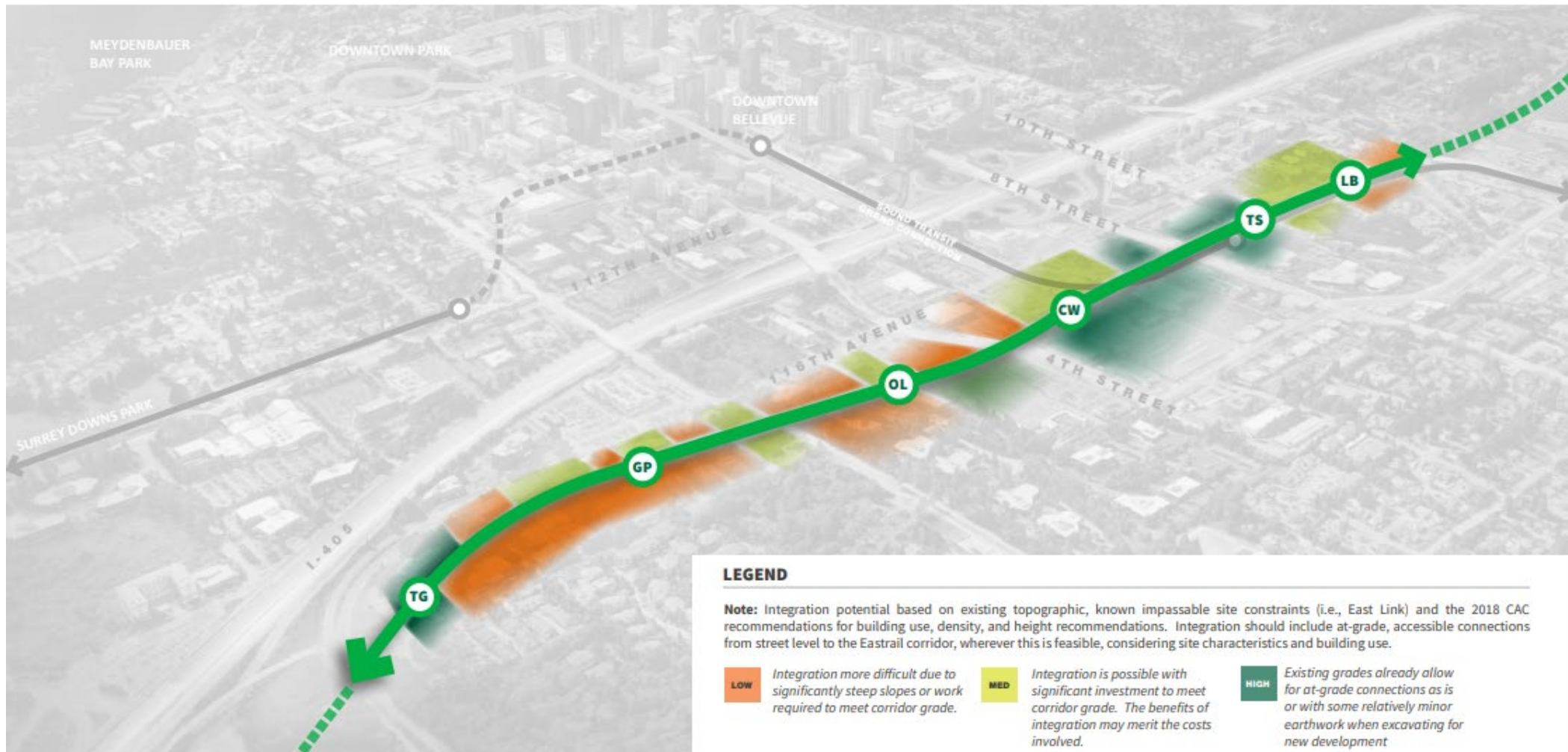
# Wilburton Eastrail Framework Plan

NE 12<sup>th</sup> Street to SE 5<sup>th</sup> Street/Trestle

Conditions in some areas (in teal) are more conducive to integration with the corridor than other areas (in orange).

Areas in light green have potential for integration but it will require significant investment to accomplish.

## Trail-Oriented Development Future At-Grade Corridor Integration Potential





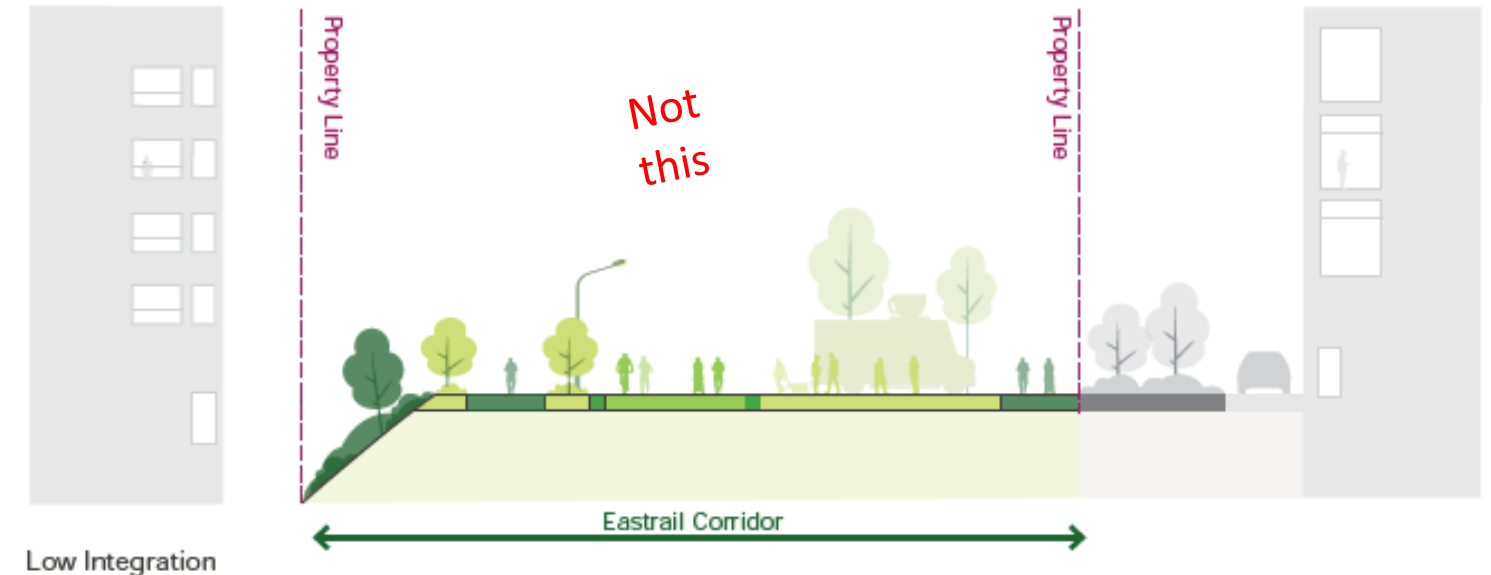
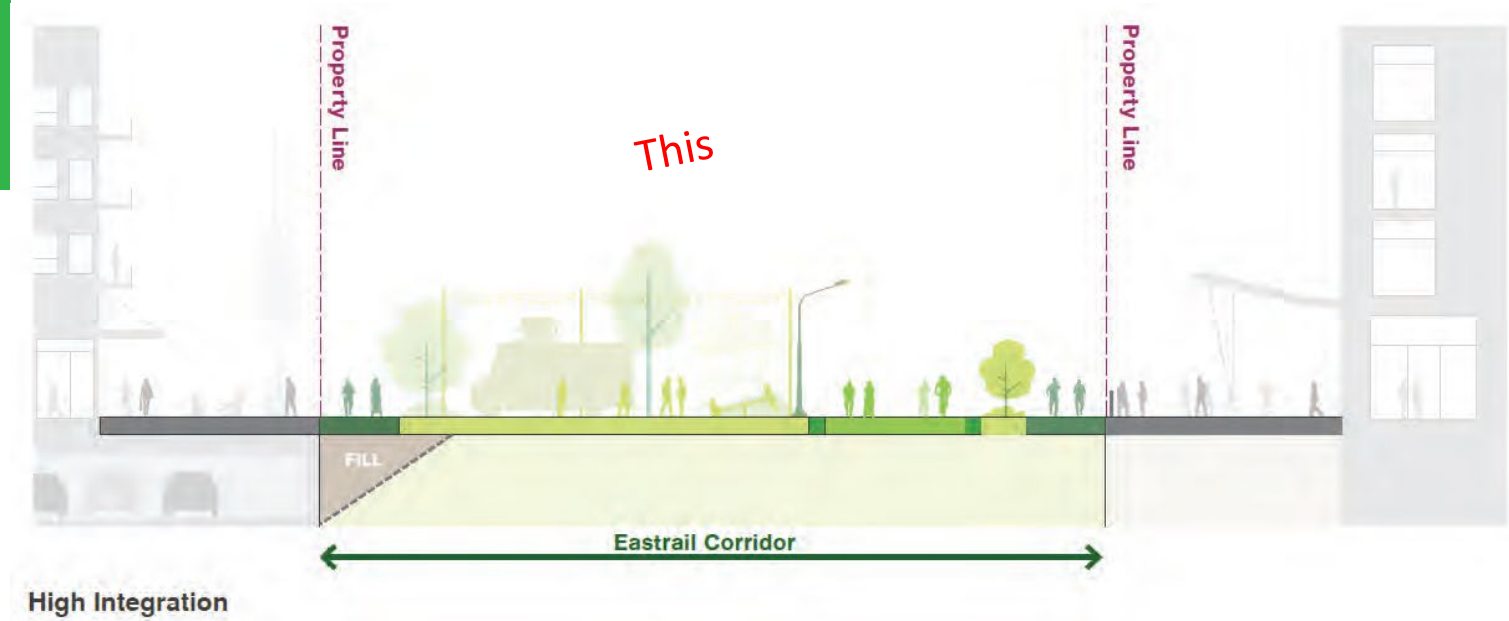
# Wilburton Eastrail Framework Plan

NE 12<sup>th</sup> Street to SE 5<sup>th</sup> Street/Trestle

Seeking high level of integration in key areas as new development occurs adjacent to corridor

Eastrail will offer efficient pedestrian route to Wilburton station.

Corridor can serve as open space, benefiting occupants of adjacent buildings.





# Grand Connection

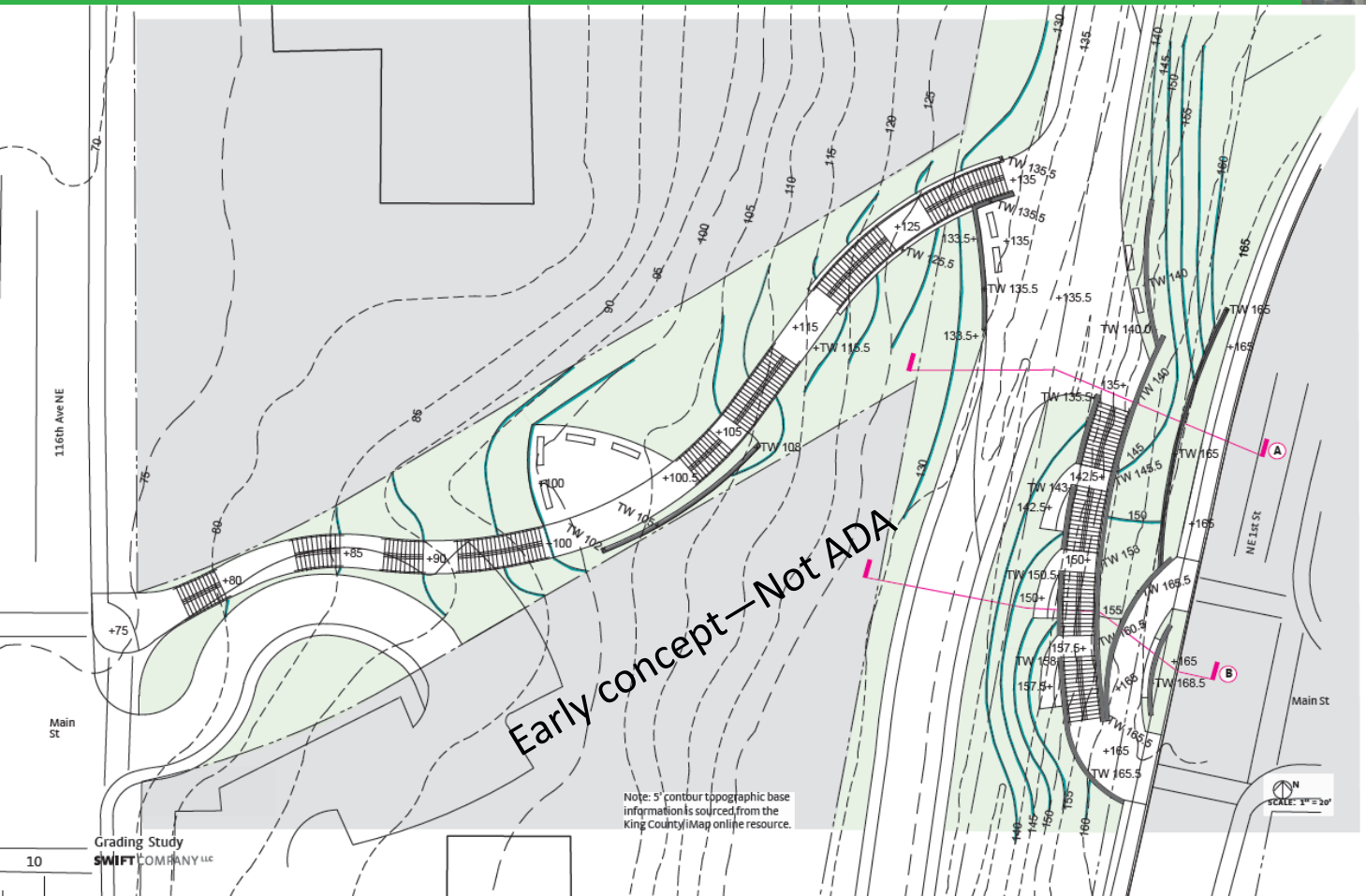




# Eastrail Connection at Main Street

## BELLEVUE

- Access to 116<sup>th</sup> Ave SE and Downtown via new Main Street Bridge
- Access to upper Main St and to Botanical Garden
- Next step is to develop ADA-compliant design concept



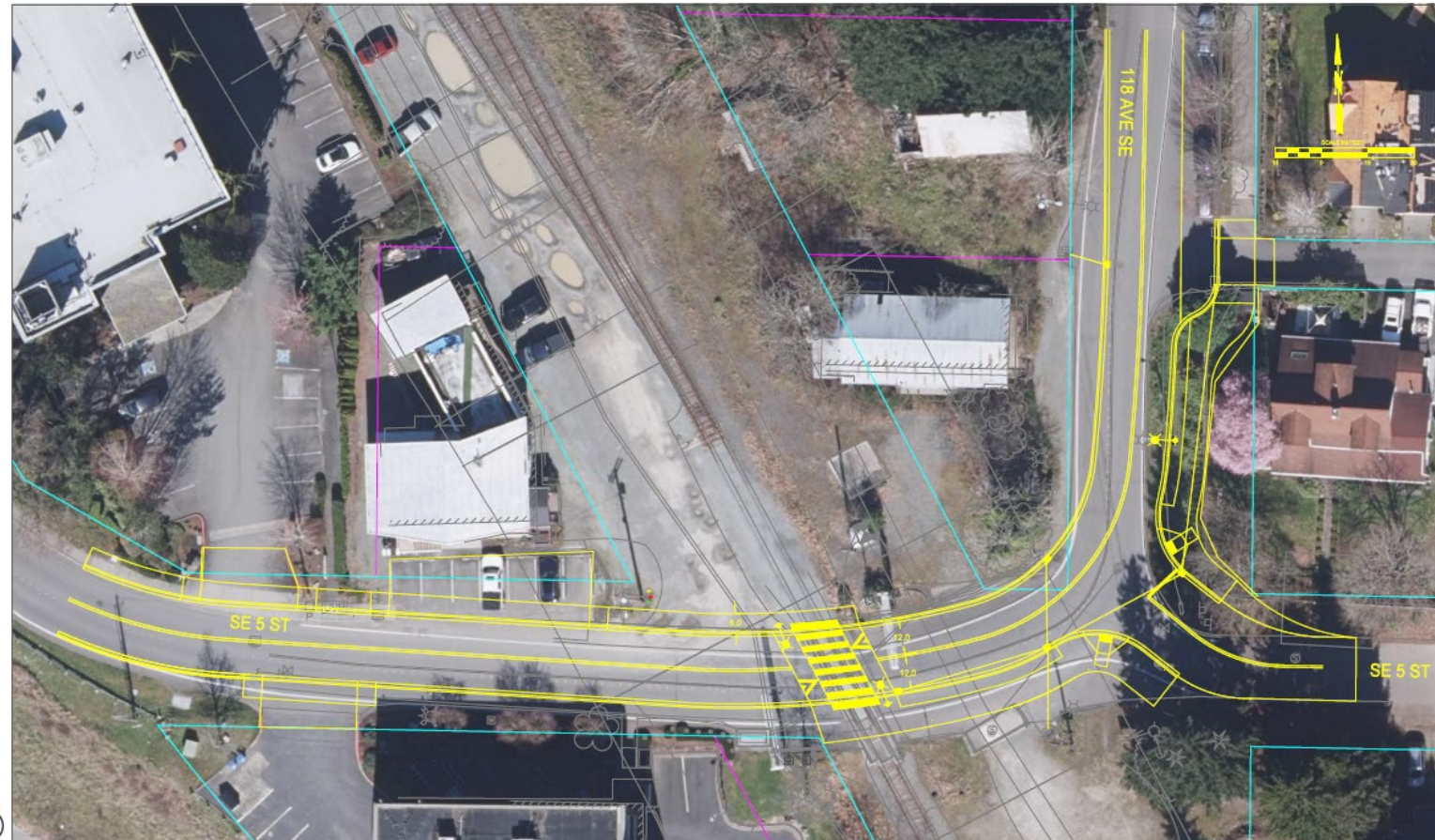
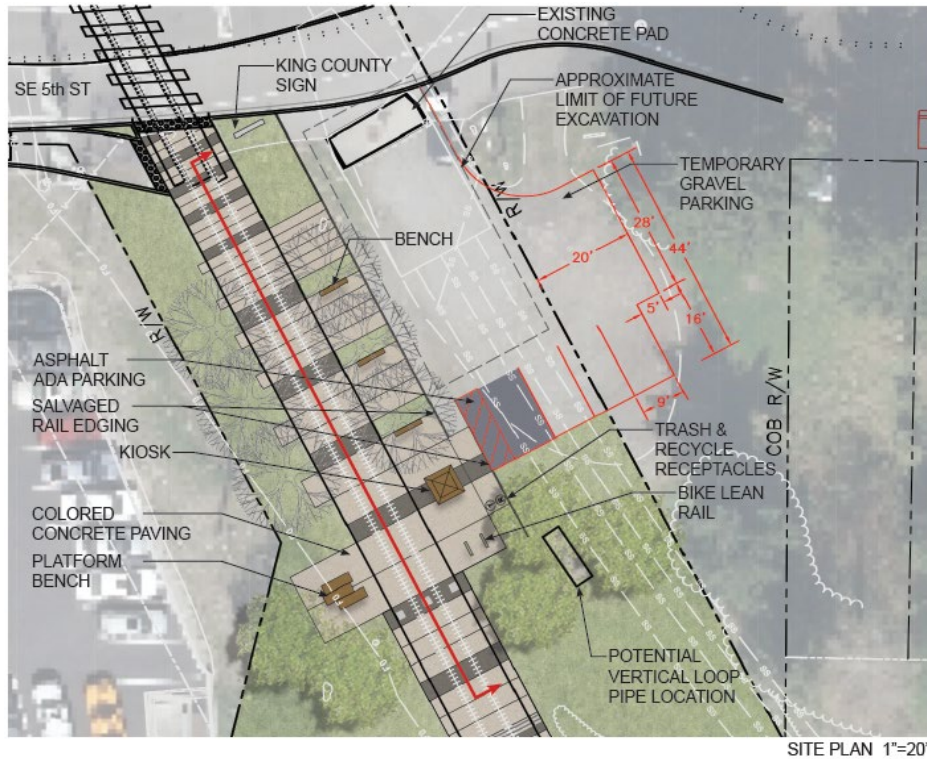


# North Trestle Gateway

SE 5<sup>th</sup> Street vicinity

Issues include:

- Realignment of 118<sup>th</sup> Avenue SE, SE 5<sup>th</sup> Street
- Sidewalk gaps
- Parking for visitors





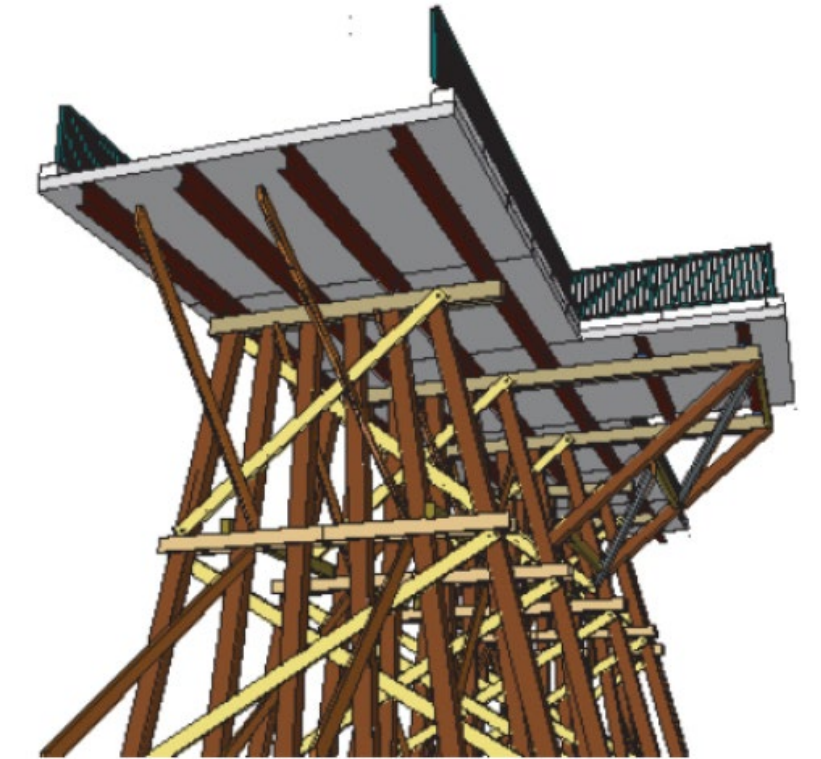
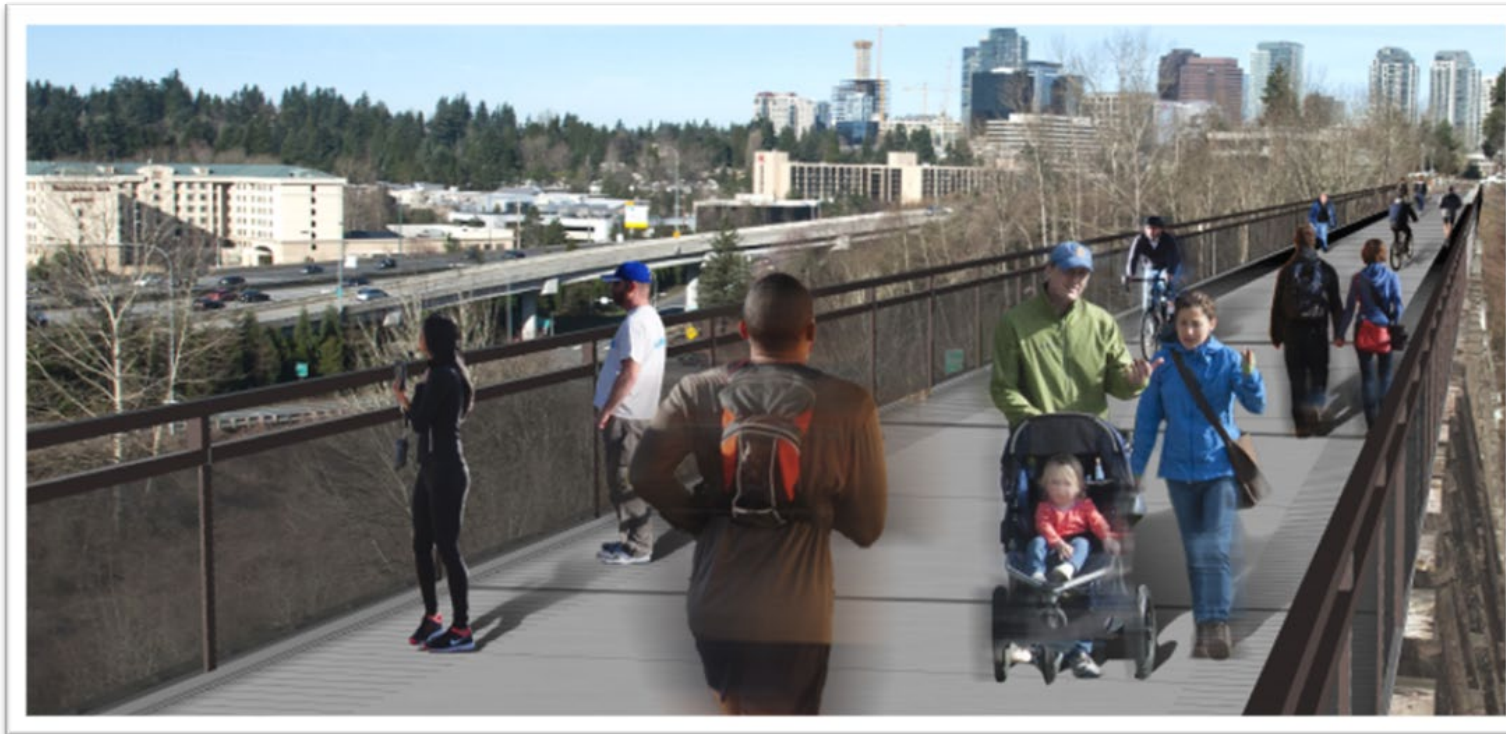
# Wilburton Trestle

## KING COUNTY

- Currently reviewing bids
- Distinctive railing, benches, overlooks
- Historic railroad character
- Open late 2025/early 2026 (anticipated)



CONSTRUCTION: 2024 - 2025



Overlook cross section



# Wilburton Trailhead Acquisitions

In 2021 King County Parks and the City of Bellevue each purchased properties adjacent to the Eastrail.

## The City of Bellevue property

- Provides Eastrail access from the Woodridge neighborhood (at SE 11<sup>th</sup> St)
- Provides construction access during the Trestle retrofit.

## The King County Parks property

- Provides access to Eastrail from 118<sup>th</sup> Ave SE.
- Provides Eastrail users access to the Mercer Slough Nature Park
- Supports O&M operations
- Offers opportunity for future development as a trailhead access location (with parking and amenities).





# I-405 Renton to Bellevue project

## WSDOT/KING COUNTY

- New Eastrail crossing of I-405 southbound lanes currently under construction, will be complete in 2024.
- Will open the same time as the Wilburton Trestle in 2025





# I-90 Steel Bridge and Connecting Segments

Last remaining gap in Eastrail corridor, Renton to Woodinville

Partial funding from State (Move Ahead Washington), King County

Currently preparing application for a RAISE grant (seeking \$25 million)



## I-90 STEEL BRIDGE & TRAIL - PROJECT ELEMENTS

All costs are early planning-level estimates in anticipated 2027 dollars.



# GAP AT I-90 STEEL BRIDGE—PARTIALLY FUNDED

Scope may include:

- Connecting trail segments to north and south
- Access at SE 32<sup>nd</sup> Street
- Connection to I-90/MTS Trail

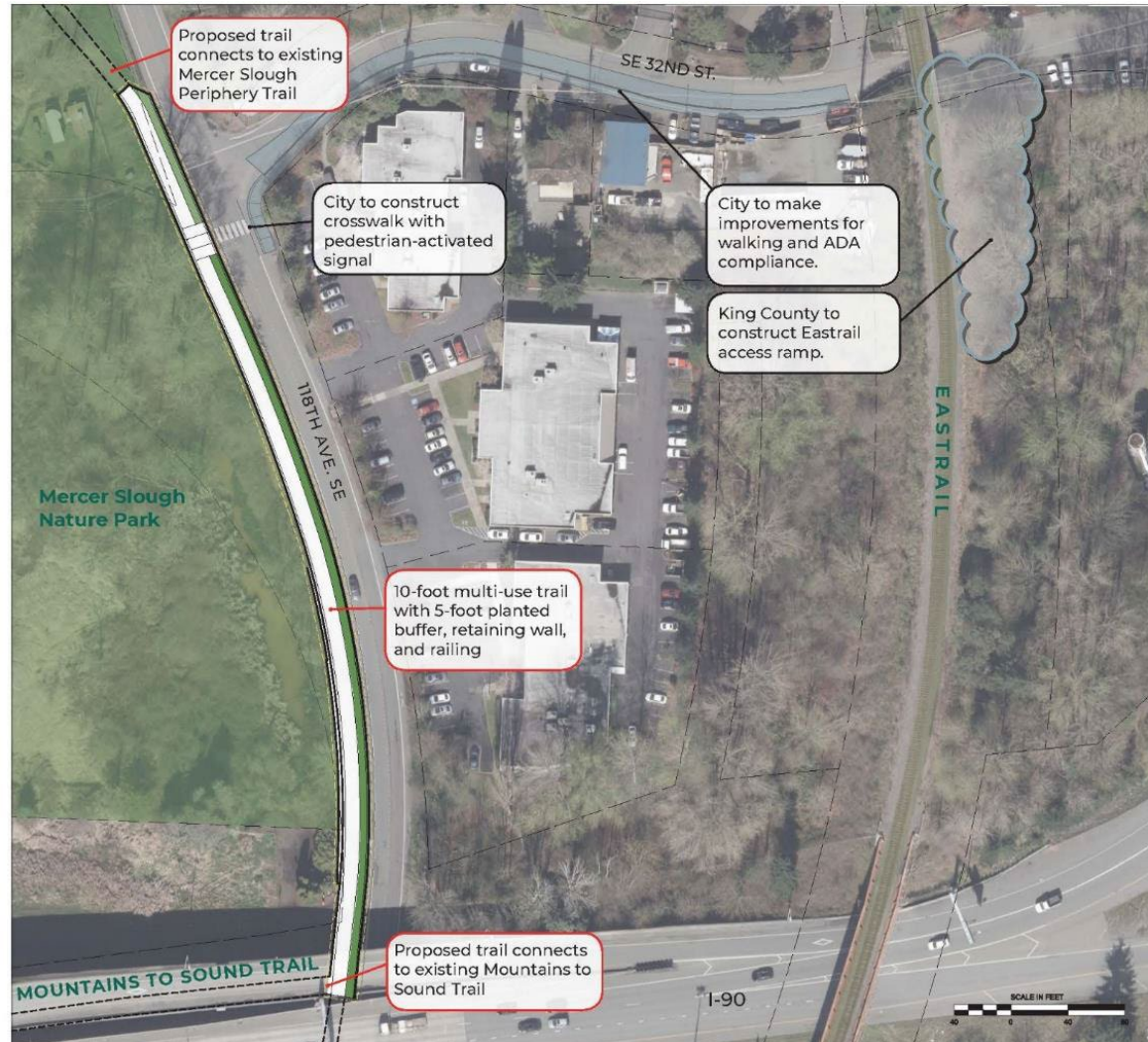




# Eastrail Connection to Mtns to Sound Trail

via SE 32<sup>nd</sup> Street, 118<sup>th</sup> Avenue SE

- City awarded \$2.5m for construction
- Anticipate construction in 2026





# End Discussion + Questions

Mike Ingram, Senior Planner  
Transportation Department  
[mingram@bellevuewa.gov](mailto:mingram@bellevuewa.gov)  
425452-4166

Access points to Eastrail south  
segment, to Renton

