



City of Bellevue

# Ashwood Park Master Plan Update

[bellevuewa.gov/ashwood-master-plan](https://bellevuewa.gov/ashwood-master-plan)

**Community Meeting #2 | September 4, 2024**

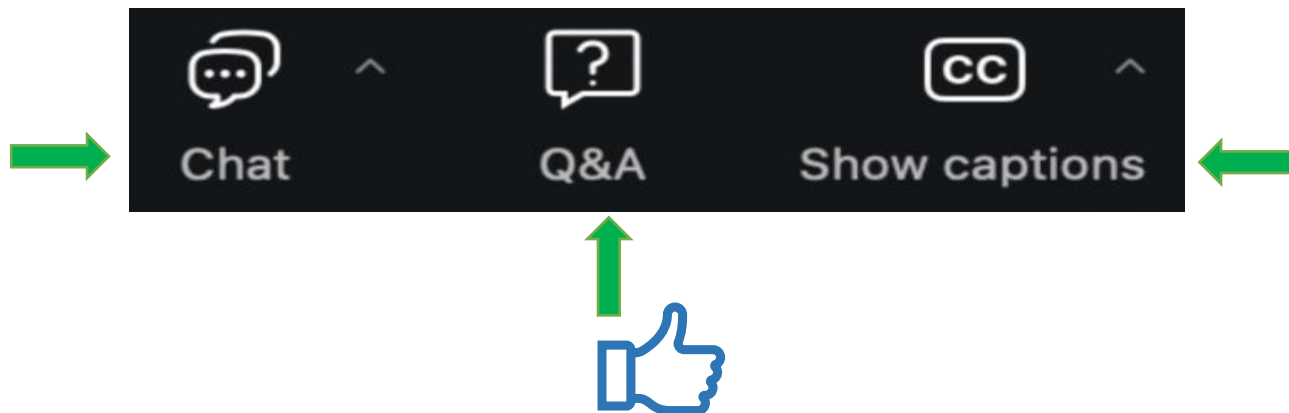
# Welcome

---

- This meeting is being recorded
  - Closed Caption is turned on for all who would like to use that feature
  - All attendees are on mute
- If you need assistance with audio or video, please put a message in the **Q&A**
- If you are dialing in by phone, you can participate during **Q&A** by pressing **\*9** to raise your hand  
When called on, press **\*6** to unmute

# Welcome Cont.

- Find the **Question & Answer (Q&A)** feature!  
That's the way to comment and ask questions
  - See a question you wanted to ask? Click the **thumbs-up** icon to "upvote" the question
- To keep us on time, we have consolidated similar questions



# Welcome Cont.

---

- We are expecting a large number of attendees, to avoid confusion, all are on mute.
- We will gather questions throughout the webinar using the **Q&A** feature and will answer them together after the presentation.
- To keep us on time, we will consolidate similar questions
- The **Chat** feature is read only, look there for additional notes from the park team!

# • Introductions

---

- City of Bellevue Staff
- MacLeod Reckord Staff
- PRR staff

# AGENDA



Project Review



Ashwood Survey #1 Results



Conceptual Plans



Next Steps



Question and Answers



# **Project Review**

---

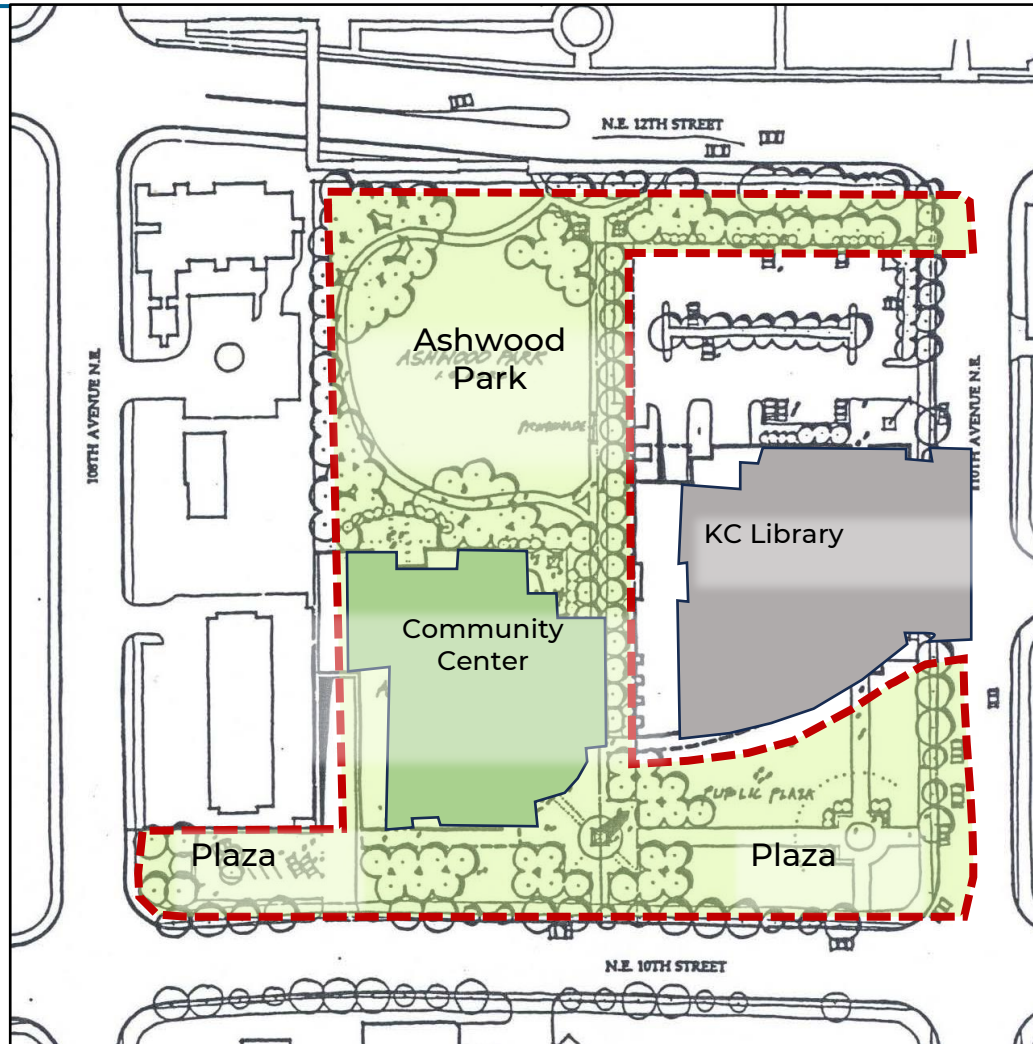
# Ashwood Park



2023 Aerial



# 1990 Conceptual Site Plan



1990 Adopted Site Plan

# Public Outreach Plan

---

## Goal and objectives

- Provide a range of opportunities for community input
- Generate broad reaching, cross cultural input
- Engage community stakeholders
- Keep public, Parks Board, and City Council informed
- Website: [Bellevuewa.gov/ashwood-master-plan](https://Bellevuewa.gov/ashwood-master-plan)

# Community Meeting #1

- Meeting was held April 3, 2024 at the Bellevue Library
- There were approximately 90 people that participated in that meeting.
- We had a short Q&A session and;
- Participants were able to ask further questions at staffed stations around the room and;
- place dots on a preference chart
- The Survey was also available to complete



# Ashwood Survey Results

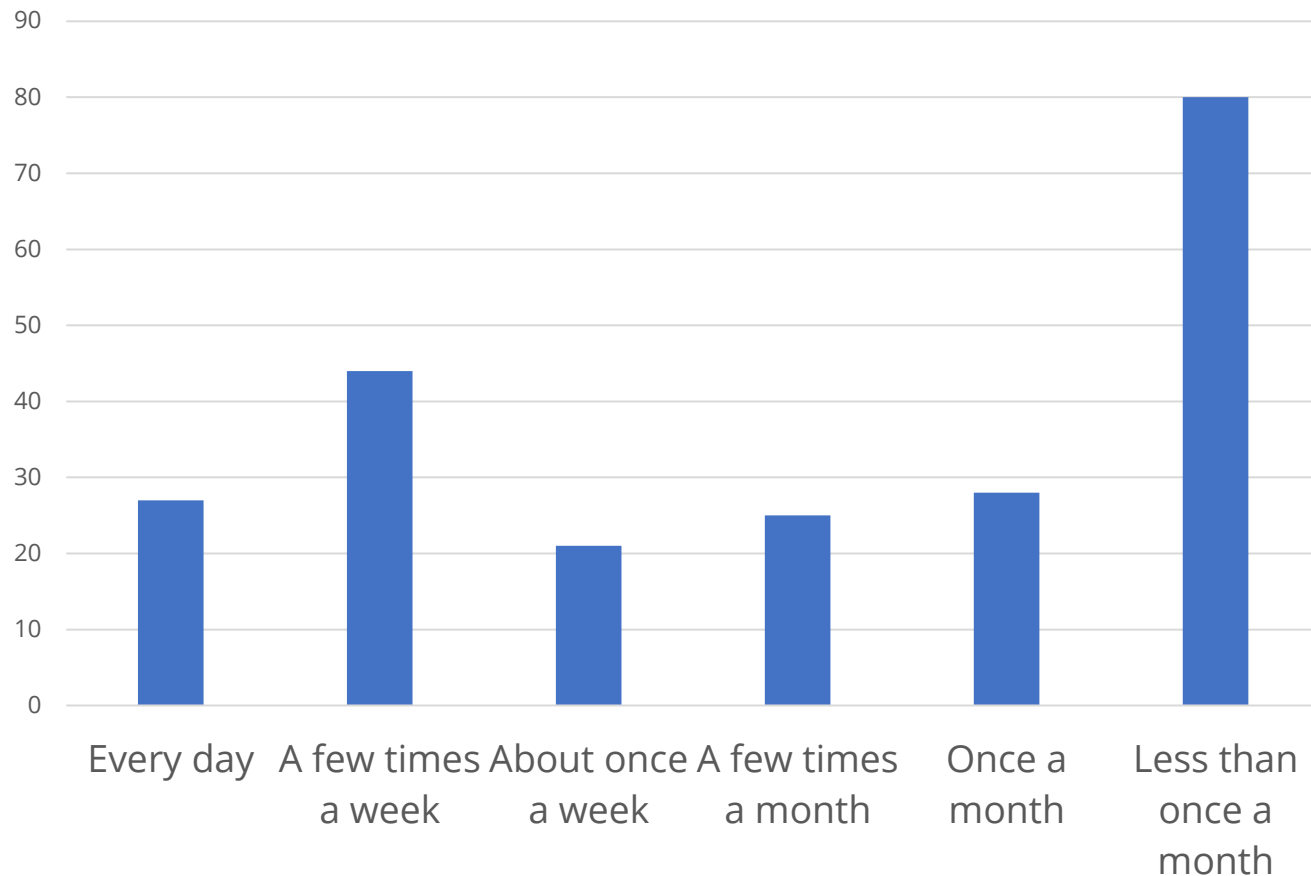
---

# Survey Results

- Demographics of respondents:
  - 191 live in Bellevue
  - 31 work but do not live in Bellevue
  - 3 do not live or work in Bellevue
  
  - 40% from 18-44 years old
  - 34% from 45-64 years old
  - 21% 65 or older
  - 5% prefer not to answer

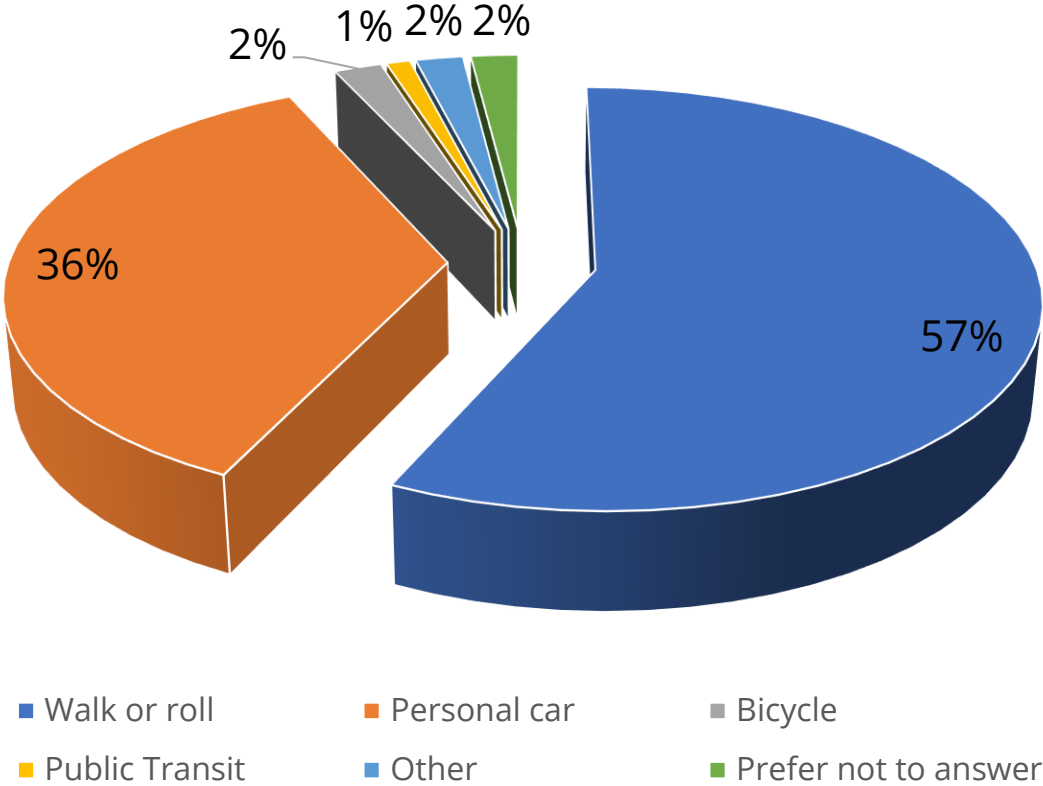
# Survey Results cont.

How often do you visit Ashwood Park?



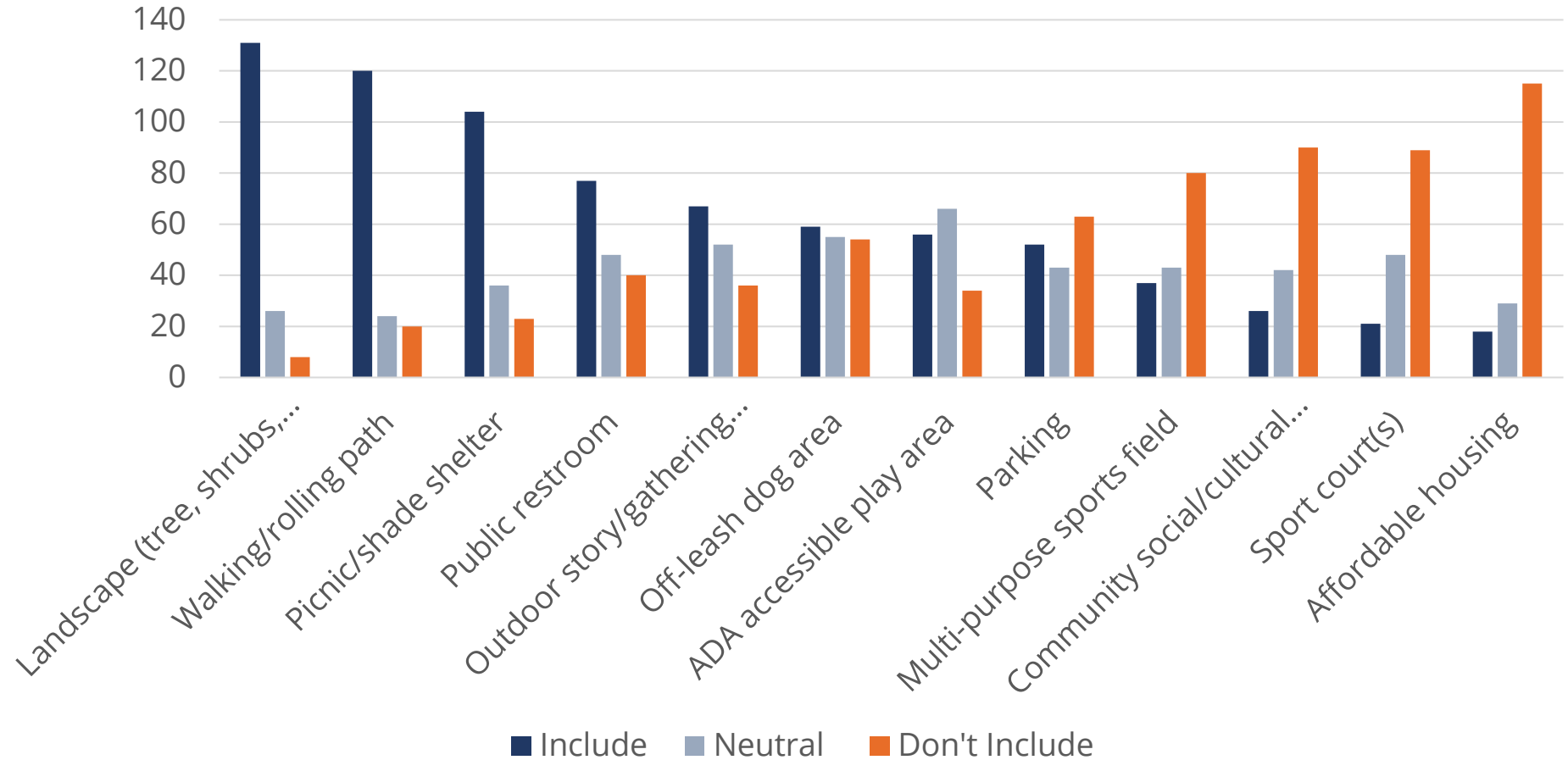
# Survey Results cont.

Q4 How do you most often access Ashwood Park?



# Preliminary Survey Results

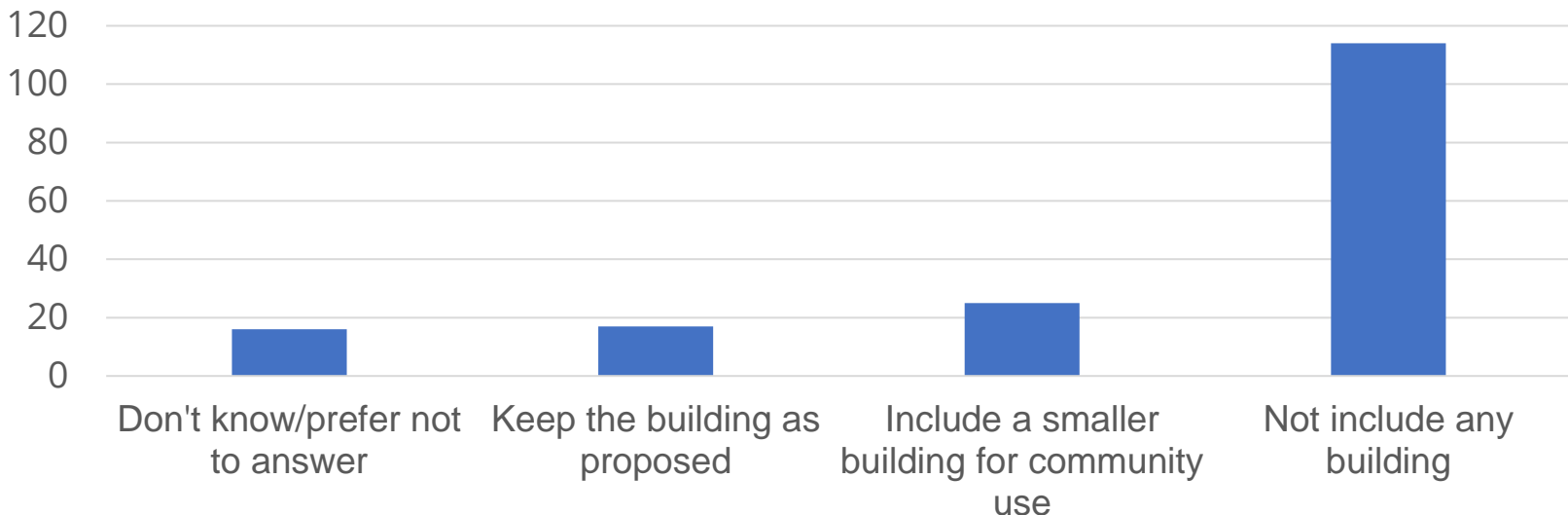
## Park Elements





# Preliminary Survey Results (cont.)

Q6 The 1990 master plan includes one acre of open green park and a large building that includes structured parking, a community center, and affordable housing. In your opinion, should the updated master plan:



# Preliminary Survey Summary

---

- Most respondents would prefer an open park with walking routes, increased landscaping, picnic/shade shelters, public restroom, gathering space and an off-leash dog area.
- Many in the community prefer there not to be a community/cultural center, affordable housing, sports courts or sports fields.
- The majority of users walk or roll to Ashwood.



# Conceptual Plans

---

# Concept Alternatives

- Previous 1990 Master Plan
- 5 Additional Concept Alternatives
  - Variability in balancing similar program elements
- Themes / Character
  - Evokes aesthetic and functional differences
- Comparison Matrix
  - Quantitative comparisons



Grand Pavilion South - Concept A



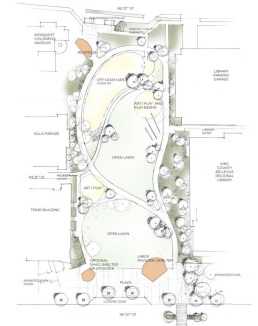
Grand Pavilion North - Concept B



Active Theater - Concept C

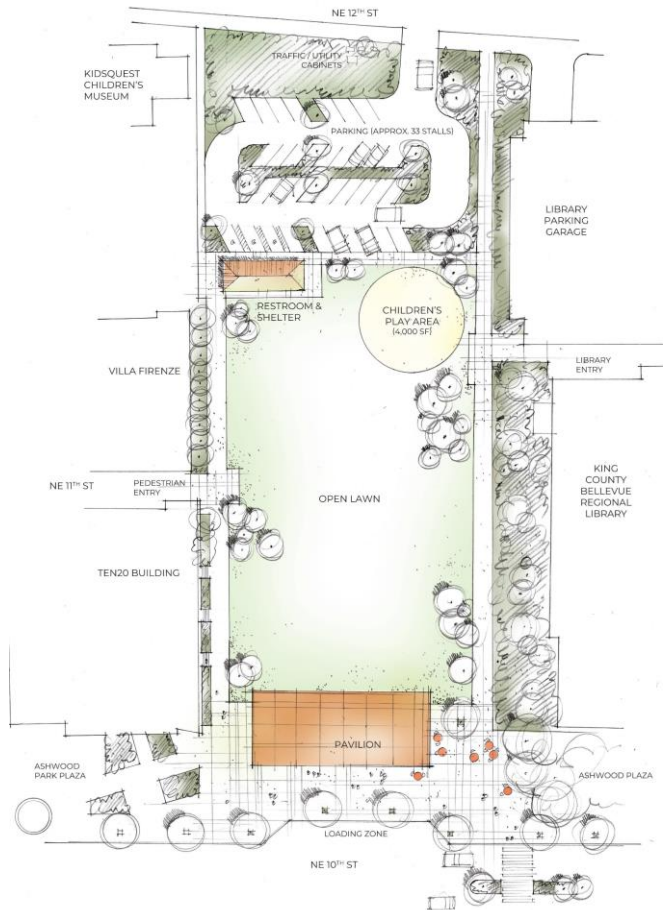


Playful Promenade - Concept D



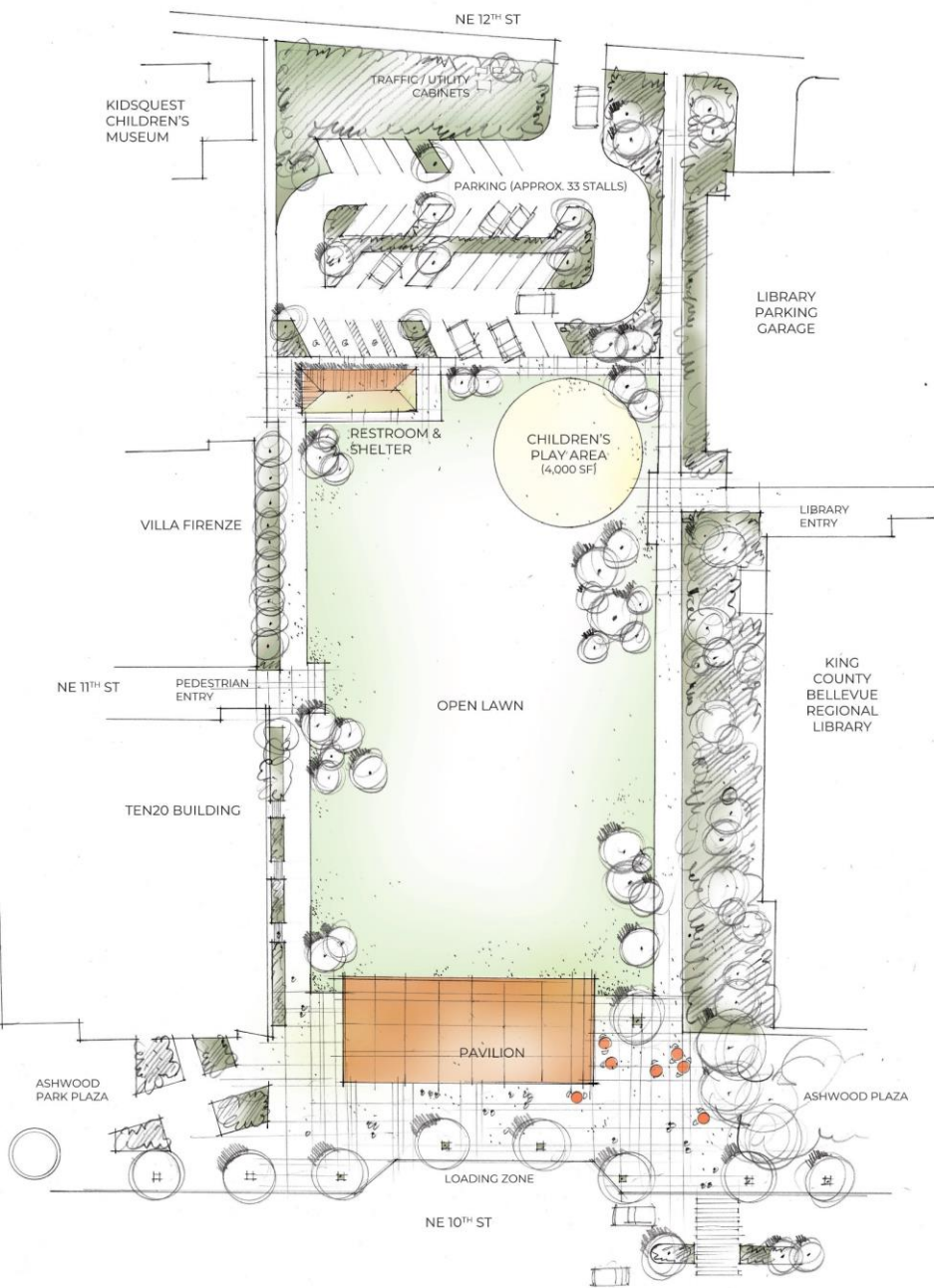
Art In The Park - Concept E

# Grand Pavilion South – Concept A



## Key attributes

- Structured venue for markets, events
- Large plaza space
- Open, unscheduled lawn
- Existing parking improved
- Restroom/shelter combined
- Children's play area



Play Area and Playful Site Furnishings



Pavilion

Restroom / Shelter



Open Lawn with Wide Perimeter Promenade and Plazas



Street Front Plaza

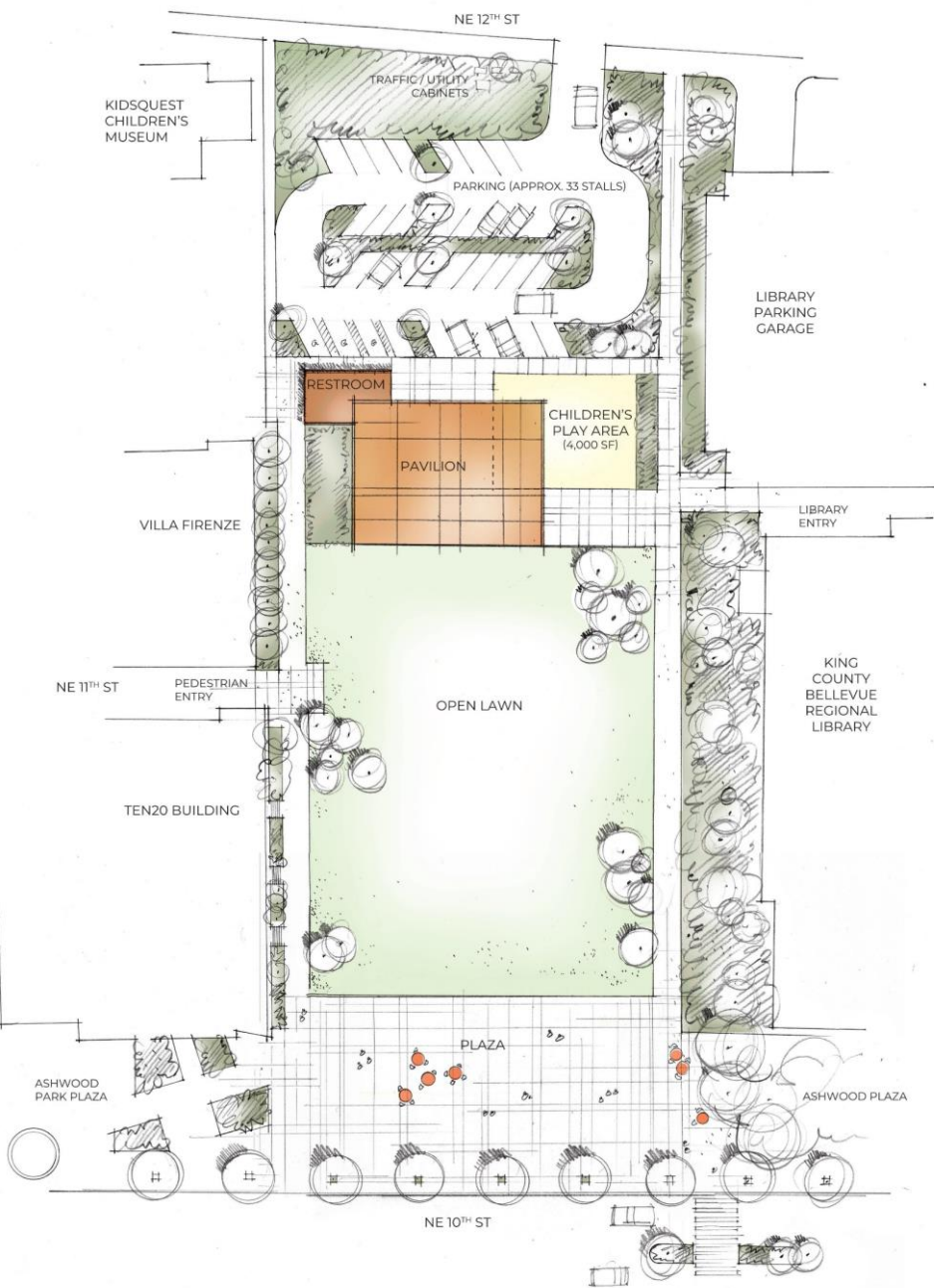
Precedent Images

# Grand Pavilion North – Concept B



## Key attributes

- Structured venue integrated with restroom and play area
- Large plaza space
- Open, unscheduled lawn
- Existing parking improved



Play Area and Playful Site Furnishings



Pavilion

Restroom / Shelter



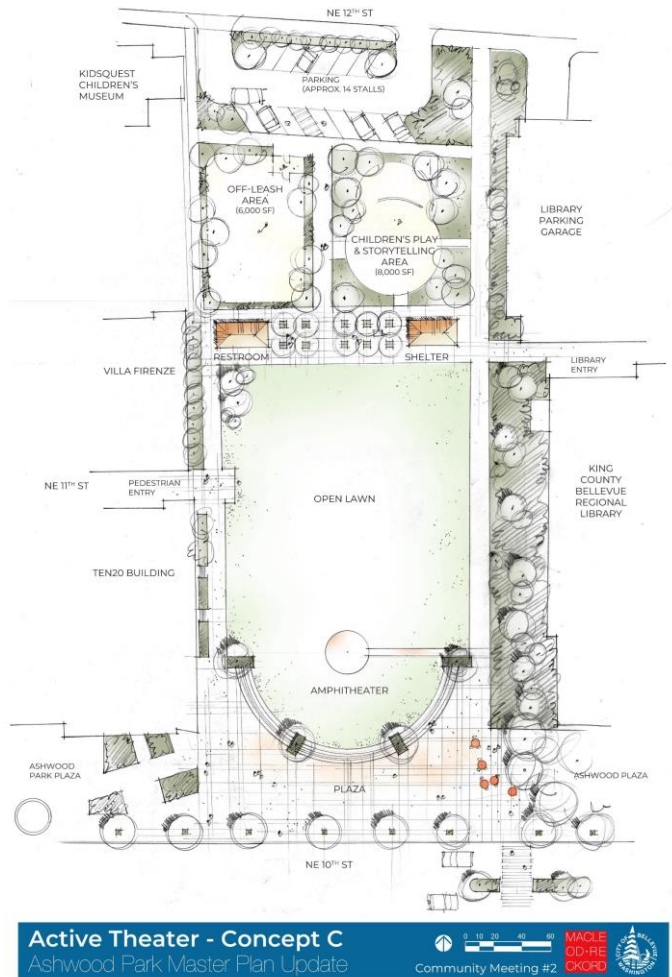
Open Lawn with Wide Perimeter Promenade and Plazas



Street Front Plaza



# Active Theater – Concept C



## Key attributes

- Plaza with formalized amphitheater bowl and open, unscheduled lawn
- Large and medium plaza spaces
- Existing parking reduced
- Restroom/shelter separate structures
- Children's play area
- Off-leash area



Off-Leash Area



Raingarden Planting



Restroom and Shelter



Play Area



Bocce Courts



Open Lawn and Amphitheater



Street Front Plaza



Precedent Images

Active Theatre - Concept C  
Ashwood Park Master Plan Update

Active Theater - Concept C  
Ashwood Park Master Plan Update

0 10 20 40 60  
MACLE OD-RE OKORD  
COMMUNITY MEETING #2  
CITY OF BELLEVUE WASHINGTON

September 04 2024  
COMMUNITY MEETING #2  
MACLE OD-RE OKORD  
CITY OF BELLEVUE WASHINGTON

# Playful Promenade – Concept D



## Key attributes

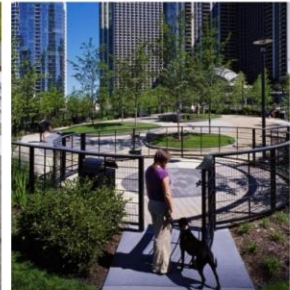
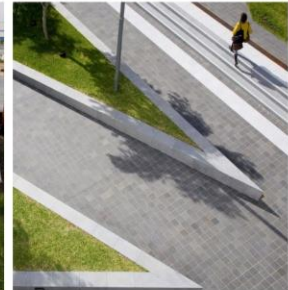
- Large plaza space
- Open, unscheduled lawn
- ADA parking only
- Restroom/shelter separate structures all at south end
- Children's play area integrated with artwork/earthwork
- Off-leash area
- Angular geometry



Art / Play



Perimeter Promenade and Plazas



Off-Leash Area



Restroom



Pergola / Shelter



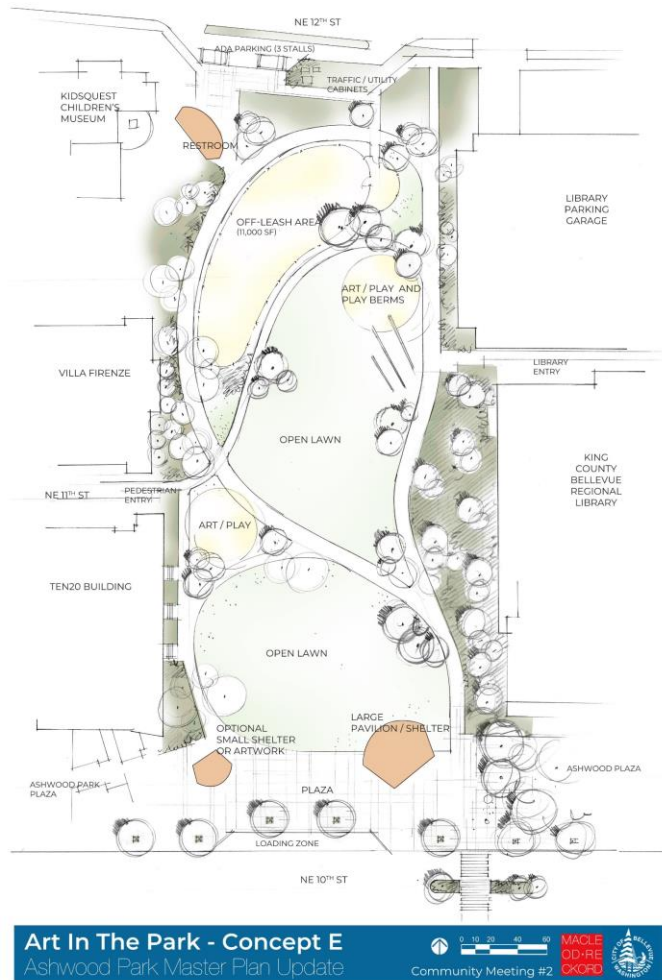
Seat / Swings



Plaza and Seating



# Art in the Park – Concept E



## Key attributes

- Medium and small plazas
- Open, unscheduled lawn interrupted by pathways
- ADA parking only
- Restroom/shelter separate structures at both ends of the site
- Children's play area integrated with artwork/earthwork in 2 locations
- Largest off-leash area
- Curvilinear geometry



Art / Play



Off-Leash Area



Gateway



Restroom



Pavilion / Shelter



Street Front Plaza and Open Lawn



# Summary

- Comparison Matrix

Program Element	Grand Pavilion South Concept A	Grand Pavilion North Concept B	Active Theater Concept C	Playful Promenade Concept D	Art in the Park Concept E
<b>Park Structures</b>	Mixed event large covered pavilion	Mixed event large covered pavilion with integrated restroom	Separate restroom and covered shelter	Separate restroom and open air pergola	Separate restroom, one pavilion/shelter, one small shelter
<b>Performance Venues</b>	Covered pavilion and open lawn	Covered pavilion and open lawn	Open air stage platform and open lawn	Open air pergola/shelter and open lawn	Covered pavilion and open lawn
<b>Parking and Access</b>	Two-way ingress/egress from relocated driveway and two bays of parking	Two-way ingress/egress from relocated driveway and two bays of parking	One-way ingress/egress with two new driveways and one bay of parking	ADA only stalls in single lane drive through	ADA only stalls in single lane drive through
<b>Parking Stall Count</b>	approx 33	approx 33	approx 14	approx 6 ADA stalls	approx 3 ADA stalls
<b>Plaza Development</b>	South end and includes loading zone	South end and integrated with pavilion at north end	South end and integrated with restroom/shelter	South end	South end
<b>Children's Play Area</b>	Yes, 4000 SF	Yes, 4,000 SF	Yes, 8,000 SF	Yes, integrated with art	Yes, integrated with art
<b>Off-Leash Area</b>	Not provided	Not provided	Yes, 6,000 SF	Yes, 10,000 SF	Yes, 11,000 SF
<b>Program Elements Common to All Alternative Concepts</b>					
Open unscheduled lawn					
Perimeter path, seating					
Restroom and shelter					
Access to NE 11th and Library					
Connections to existing plazas along south frontage					
Remove vehicular access through library					

# Summary

---

- All 5 Concepts can accommodate variable program elements
- Preferences
  - Concept
  - Program elements
  - Aesthetic quality





# Next Steps

# Timeline



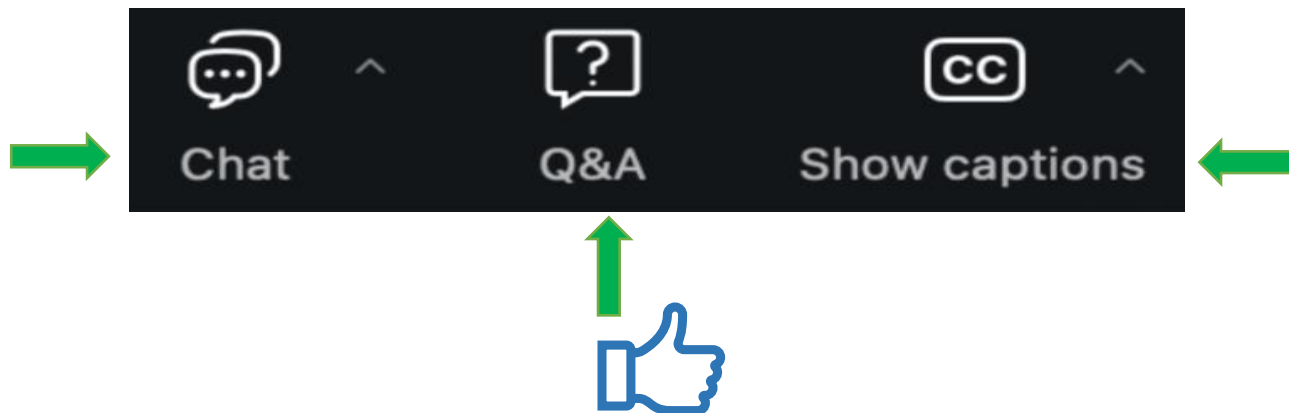
## Survey #2

- Survey will be available on the project website September 5, 2024

<https://bellevuewa.gov/ashwood-master-plan>

# Questions and Answers

- Find the **Question & Answer (Q&A)** feature! That's the way to comment and ask questions
  - See a question you wanted to ask? Click the **thumbs-up** icon to "upvote" the question
- To keep us on time, we have consolidated similar questions



# Questions and Answers

- If you are dialing in by phone, you can participate by pressing \*9 to raise your hand
  - When called on, press \*6 to unmute

