



DRAFT 2023 Stormwater Management Program Plan Update & Public Hearing

Don McQuilliams | Utilities Operations Manager
John Sizemore | Regulatory Compliance Supervisor
February 2, 2023



WESTERN WASHINGTON PHASE II MUNICIPAL STORMWATER PERMIT

A FEDERAL CLEAN WATER ACT
NATIONAL POLLUTANT DISCHARGE ELIMINATION SYSTEM (NPDES) AND
WASHINGTON STATE WASTE DISCHARGE GENERAL PERMIT



City of Bellevue, Washington
NPDES ANNUAL REPORT
DRAFT 2023 STORMWATER
MANAGEMENT PROGRAM PLAN /
2022 COMPLIANCE REPORT

January 2023



Seeking feedback on
the 2023 Stormwater
Management
Program Plan (SWMP)

THE DRAIN IS JUST FOR RAIN



Agenda

- History of the NPDES permit
- 2019-2024 permit requirements
- The 2023 SWMP
- 2022 NPDES Compliance Report
- Public Hearing

City of Bellevue NPDES History

- 1st permit issued in 2007
- 5-year permit terms
- Issued by the Department of Ecology
- Progressive
- Reissued in 2013 and again in 2019

Stormwater Management Program (SWMP) Plan

- Required to be updated annually
- The SWMP covers the 5-year permit term
- Opportunity for Public Involvement & Participation
- Guidance to staff and an outline for the public
- Formatting follows the permit
- Updated annually no later than March 31st

2019-2024 NPDES Phase II Permit Requirements

- Stormwater Planning
- Public Education and Outreach (E&O)
- Public Involvement and Participation
- Mapping and Documentation
- Illicit Discharge Detection and Elimination (IDDE)
- Controlling Runoff
- Operations and Maintenance
- Source Control
- Monitoring

Stormwater Planning

- ✓ Convene an interdisciplinary team
- ✓ Respond to the series of Stormwater Planning Questions
- ✓ Submit a watershed inventory
- ✓ Document and prioritize our watersheds
- Develop a Stormwater Management Action Plan

Public Education & Outreach

- ✓ Annually conduct outreach and education
- ✓ Conduct a campaign for behavior change
- Evaluate and report on changes for the behavior campaign

Public Involvement & Participation

- ✓ Annually invite the public to comment on the SWMP
- Post on the City website the Final SWMP Plan and the annual report

Mapping & Documentation

- ✓ Collect size and material for all known stormwater outfalls
- Map known connections from the City owned stormwater system to a privately-owned stormwater systems
- ✓ Make Stormwater maps available in an electronic format

Illicit Discharge Detection & Elimination (IDDE)

- ✓ Establish and maintain an ongoing IDDE program
- ✓ Provide training to staff responsible for IDDE activities
- ✓ Field screening of a portion of the Stormwater system

Controlling Runoff from New Development, Redevelopment & Construction Sites

- ✓ Implement an ordinance or other mechanism that addresses stormwater runoff from development
- ✓ Make effective a local program that meets Permit requirements

Operations & Maintenance

- ✓ Ongoing program for inspection and maintenance of stormwater facilities
- ✓ Update the Stormwater maintenance standards, as necessary
- ✓ Document the practices, policies and procedures to reduce stormwater impacts
- ✓ Update Stormwater Pollution Prevention Plans

Source Control Program for Existing Development

- ✓ Adopt and make effective an ordinance(s), or other enforceable document, requiring the application of source control Best Management Practices
- ✓ Establish a Source Control inventory
- ✓ Implement an inspection program
- ✓ Implement a progressive enforcement policy

2022 NPDES Compliance Report

Anticipate to be fully compliant for the 2022 Compliance Report.

2022 Highlights

City wide staff involvement from Utilities, Parks, Facilities, Development Review and Legal to ensure we meet our NPDES obligations annually

Education & Outreach

- The Dumpster Outreach campaign reached over new 60 businesses

Operations & Maintenance

- 10,226 stormwater structures were inspected with 1,646 requiring maintenance (16%)
 - 16% indicates a downward trend over time
- 729 Private Drainage inspections performed

IDDE

- 269 Illicit Discharge responses/investigations

Development & Re-Development

- 632 Site plans reviewed

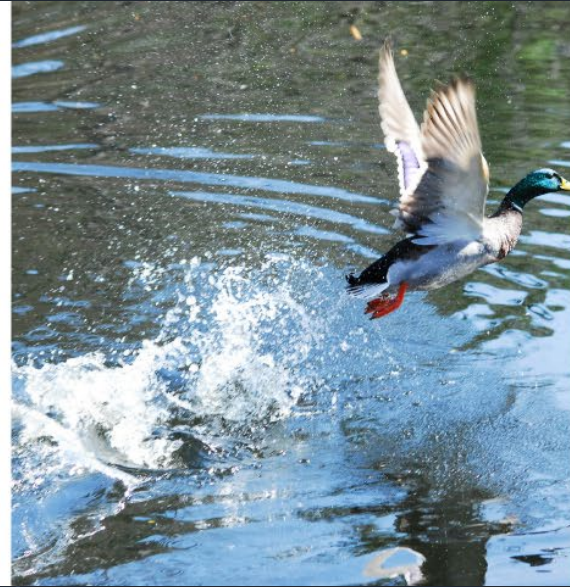
Stormwater Management Action Plan (SMAP - Due March 31, 2023)

- Nearing completion

A photograph of a metal stormwater grate on a sidewalk. The grate is partially covered with dry leaves and sticks, illustrating the problem of stormwater management. The image is darkened to make the white text stand out.

Stormwater Management Action Plan (SMAP)

For ESC awareness



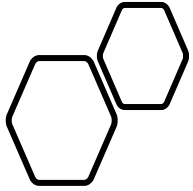
What is the SMAP?

Stormwater Management Action Plan

A requirement by Ecology in the 2019-2024 permit.

Preparation of a planning level document within a defined 'catchment area'.

Bellevue's catchment area identified is within the Crossroads area.



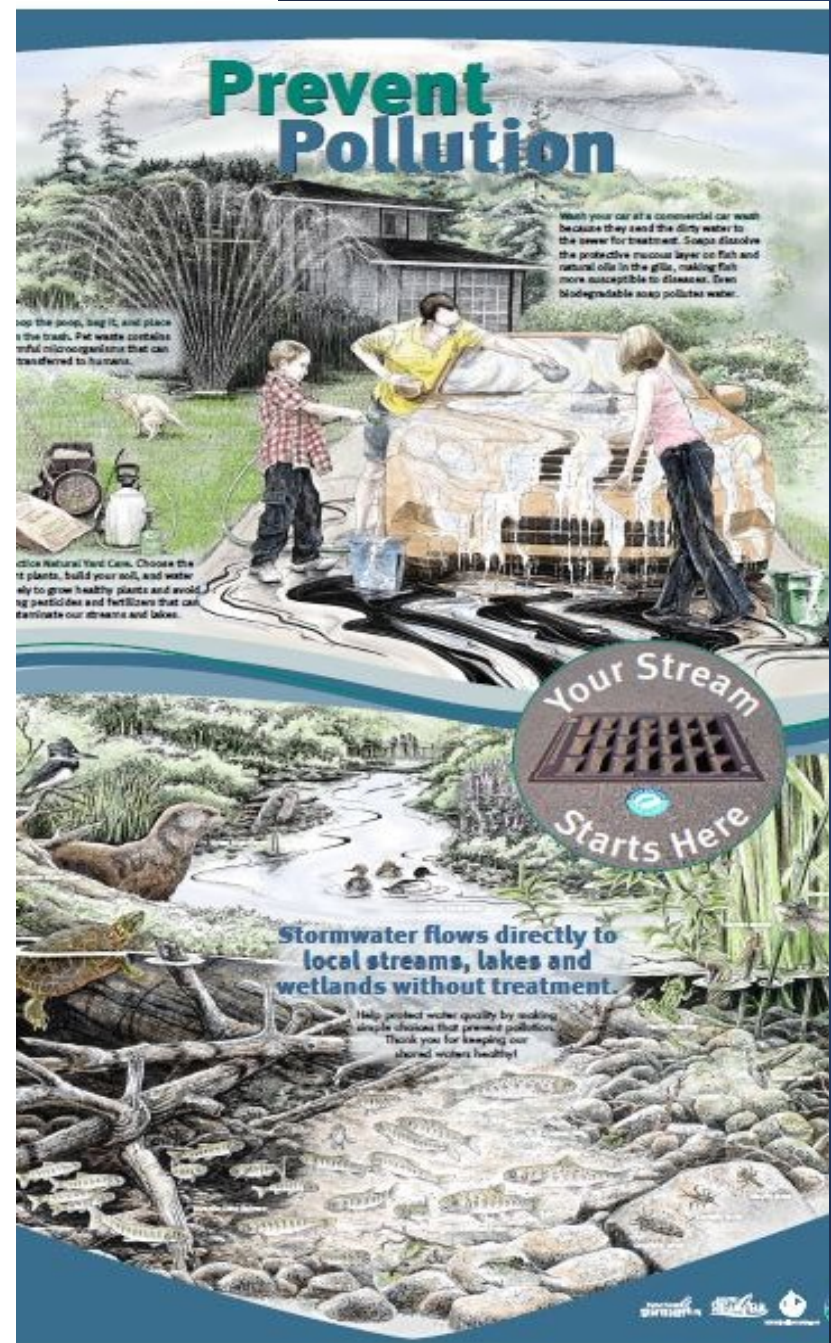
SMAP Concepts

- Identify stormwater retrofits within the catchment area.
- Develop water quality management strategies.
- Utilization of targeted and enhanced maintenance.



Moving Forward

- SMAP is in final development.
- Ecology will be releasing the draft language for the 2024-2029 permit in the summer of this year (2023).
- More to come as future permit language is developed...



Questions & Comments

The Stormwater Management Program Plan is available at:

BellevueWA.gov/Stormwater-Management-Program

Don McQuilliams | Utilities Operations Manager

dmcquilliams@bellevuewa.gov

425.452.7865

John Sizemore | Utilities Regulatory Compliance Supervisor

jsizemore@bellevuewa.gov

425.452.2030