

# Transportation Commission RETREAT

October 10, 2019

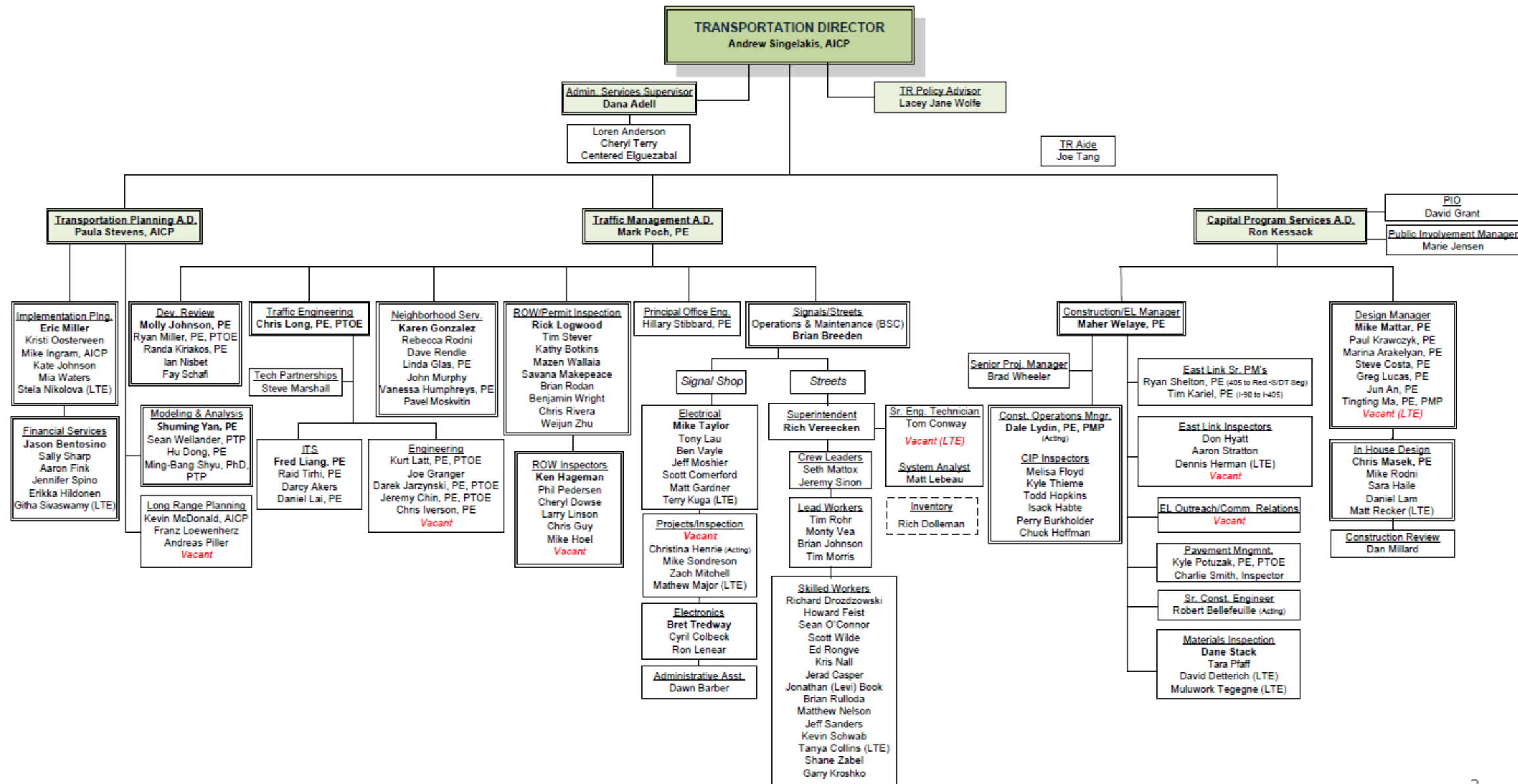
Andrew Singelakis, Director  
Transportation Department

# Topics Andrew Will Cover

- Transportation Department Organization Chart and highlighting where the Transportation Commission typically interfaces with staff
- Comprehensive Plan – Transportation Element policies that guide our work, including new policies added in the 2015 Comprehensive Plan Update
- Transportation Commission Work Program Major Items for 2020
- Transportation Commission Roles and Responsibilities – Bellevue City Code



# CITY OF BELLEVUE TRANSPORTATION DEPARTMENT ORGANIZATION CHART



# Comprehensive Plan

## Council-adopted Policy Document

- Plans adopted since the 1970s
- 1st Plan under the guidance of the Growth Management Act was in 1991
- Amended annually
- Updated every 10 years

## 1974 Comprehensive Plan

- *Bellevue shall continue to be a principal suburban community in Puget Sound metropolitan Area*
- *A system on local and regional circulation shall be encouraged which accomplishes a variety of motorized and non-motorized travel modes*

PLANNING DEPARTMENT LIBRARY

James D. Smith

## CITY OF BELLEVUE GOALS AND POLICIES

comprehensive plan | First  
Element  
of  
Community  
Development  
Guide

BELLEVUE PLANNING DEPARTMENT

AUGUST 1974

# Comprehensive Plan

**2015 was the most recent update**

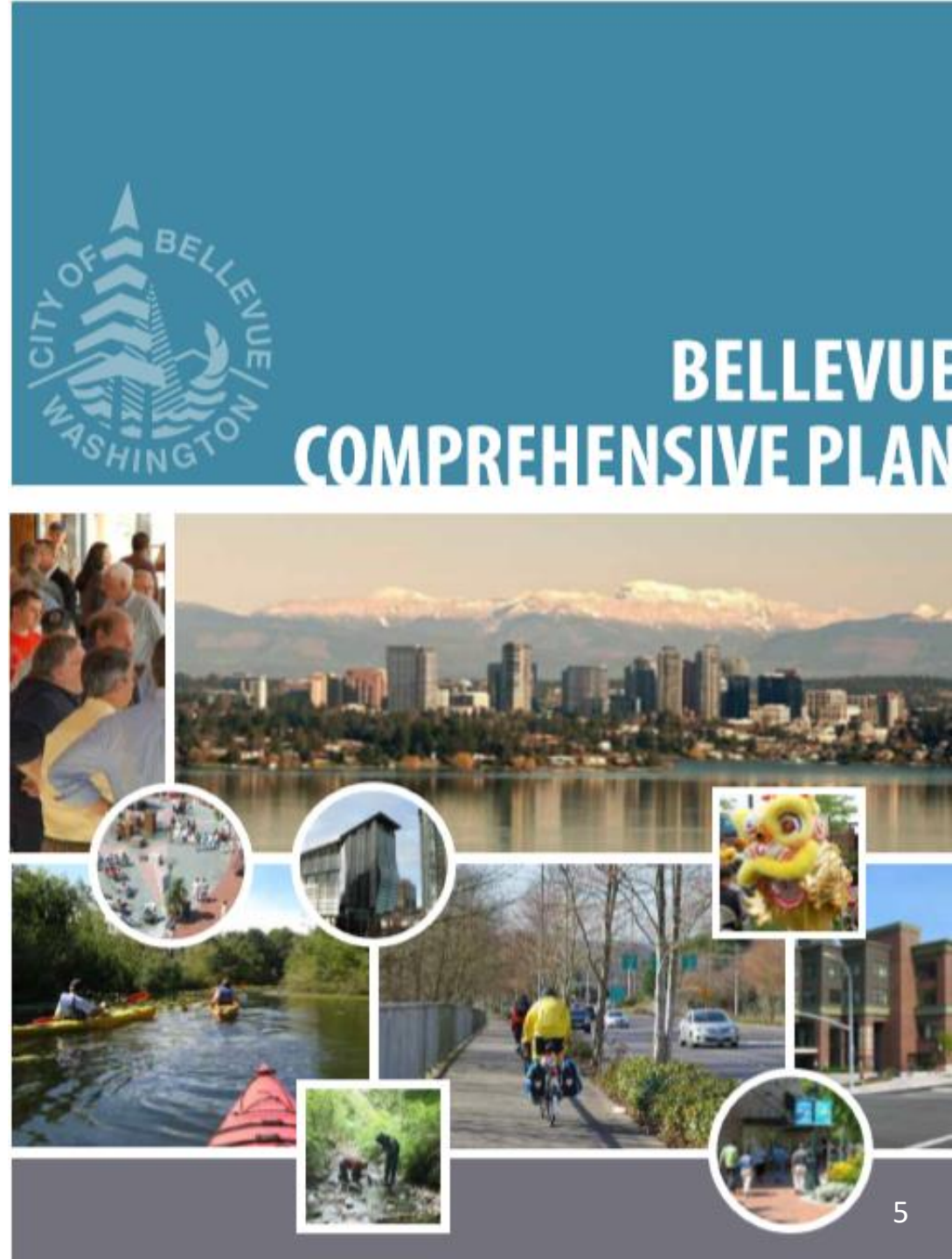
---

## TRANSPORTATION VISION

---

MOVING INTO, AROUND AND THROUGH BELLEVUE IS RELIABLE AND PREDICTABLE.

*Bellevue is connected to the region, enabling local and regional access for businesses and neighborhoods. Safe and reliable mobility options, including walking, biking, transit and car, take people where they need to go. The City's transportation system integrates leading safety and efficiency technology.*





# Comprehensive Plan



## LAND USE



---

## LAND USE VISION

---

BELLEVUE GROWS IN A MANNER THAT ENHANCES THE LIVABILITY OF THE COMMUNITY, WHILE MAINTAINING THE ELEMENTS THAT RESIDENTS CHERISH.

*Growth in Bellevue is focused in denser mixed use centers, like Downtown, BelRed, and Eastgate, while maintaining the city's outstanding natural environment and the health and vitality of established residential neighborhoods.*

# Comprehensive Plan



## ECONOMIC DEVELOPMENT

---

### ECONOMIC DEVELOPMENT VISION

---

BELLEVUE IS A HUB FOR GLOBAL BUSINESS AND INNOVATION.

*Its economic strength is built on the creativity, innovation, and hard work of its people. Bellevue works to attract innovative and entrepreneurial businesses through ensuring that our neighborhoods, cultural amenities, public schools, digital infrastructure and business climate are among the nation's best.*

# Comprehensive Plan



Credit: Hugh Jennings

## ENVIRONMENT

---

### ENVIRONMENT VISION

---

BELLEVUE EMBRACES ITS STEWARDSHIP OF THE ENVIRONMENT BY PROTECTING AND RETAINING NATURAL SYSTEMS, AND BUILDING FOR A SUSTAINABLE FUTURE.

*As growth and development occurs, Bellevue is working to build a healthier, greener, and more sustainable future for generations to come. New buildings are designed to protect and even restore natural systems. The community highly values and celebrates the results, such as reduced energy use and greenhouse gas emissions, increasing tree canopy, and more salmon in local creeks.*



# Comprehensive Plan



## CAPITAL FACILITIES

---

### CAPITAL FACILITIES VISION

---

BELLEVUE HAS OUTSTANDING COMMUNITY FACILITIES THAT SERVE THE NEEDS OF A GROWING AND CHANGING CITY.

*Bellevue has adequate financial resources to build and maintain the parks, streets, and other community facilities to address the community's growth and evolving needs. These facilities address multiple objectives, such as creating new open space and enhancing neighborhood character, even as they meet basic functional requirements.*

# Comprehensive Plan

## Transportation Element Policies – 2015 Major Policy Updates

- Vision Zero
  - *Strive to achieve zero traffic deaths and serious injuries by 2030*
- Complete Streets
  - *Consider all modes in the scoping, planning, designing, implementing, operating, and maintaining the transportation system*
- Multimodal Level-of-Service
  - *Establish multimodal level-of-service and concurrency standards and other mobility measures and targets in consideration of development patterns and mobility options*
- Technology
  - *Employ intelligent transportation system technology and infrastructure intended to improve mobility, safety, efficiency and people-moving capacity*
- Equity and Access
  - *Ensure that the transportation system infrastructure provides mobility options for all modes, and accommodates the mobility needs of everyone, including underserved populations*
- Transportation Master Plan
  - *Develop and utilize a citywide Transportation Master Plan to identify and prioritize implementation of transportation system improvements*

# 2020 Major Topics for the Commission

## **Annual and/or Recurring Topics**

- Transportation Improvement Program

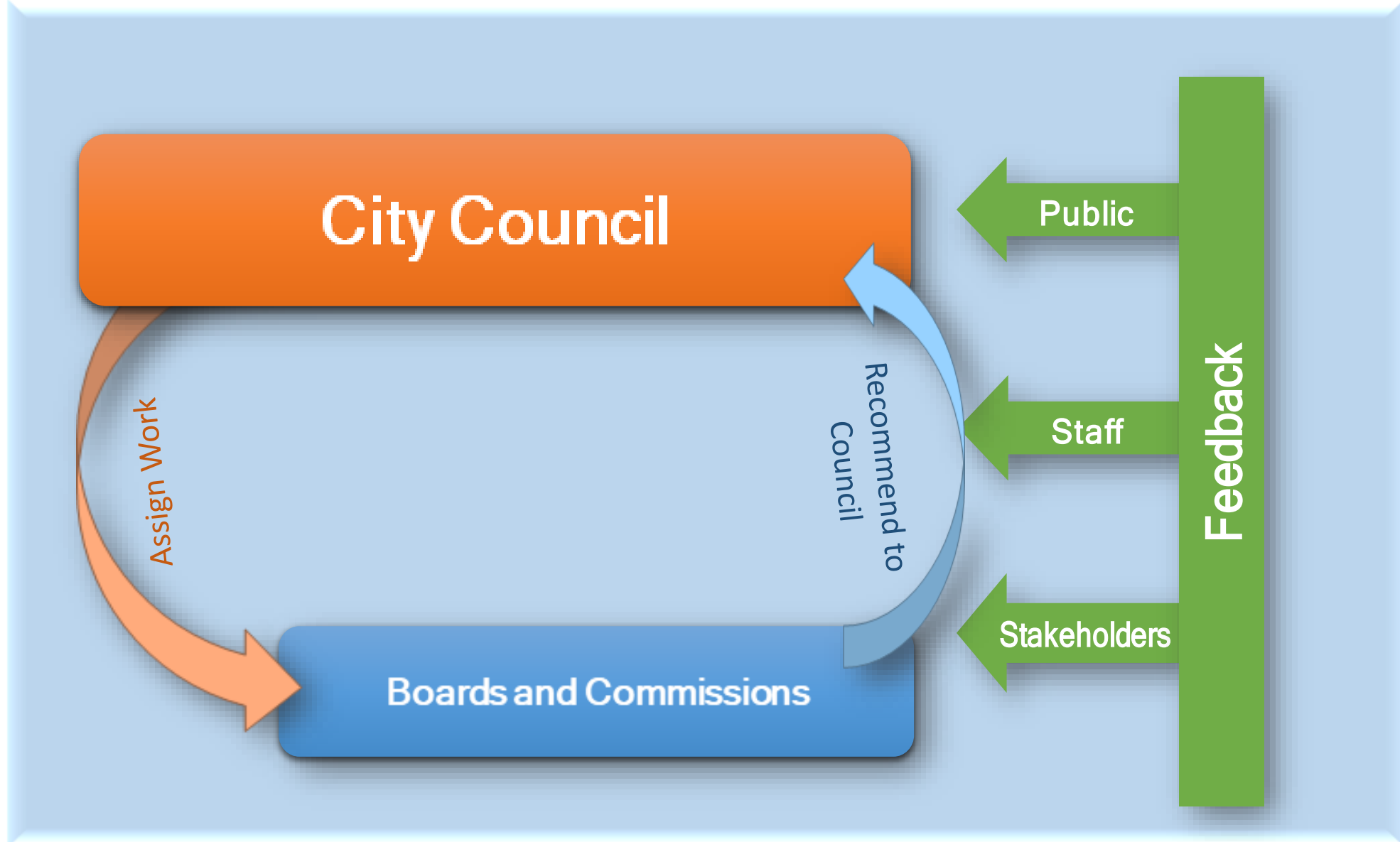
## **Council Direction**

- Vision Zero Action Plan Strategies
- “Northeastern” Bellevue Transportation Study
- Wilburton Subarea Plan (Community Development is lead)

## **Other Items**

- Transportation Master Plan Budget Request
- Environmental Sustainability Initiative – Transportation goals/targets
- Downtown Curbside Management

# Relationships and Responsibilities





## BCC 3.63.070

# Powers and Duties of the Transportation Commission

“The commission shall act in a policy advisory capacity to the city council. The commission may hold public hearings and shall conduct studies, perform analyses, and prepare reports as required by the traffic standards code or requested by the city council. The commission shall review, advise, and make recommendations to the council as needed regarding:” The following are examples of powers and duties:

- Advise/inform City Council
- Provide detailed study and recommendations on important issues/policies
- Provide additional eyes and ears for Council on important issues
- Hold public hearings
- Channel public input into Board/Commission recommendations

**Thank you!**  
Andrew Singelakis  
[asingelakis@bellevuewa.gov](mailto:asingelakis@bellevuewa.gov)  
425-452-6468

