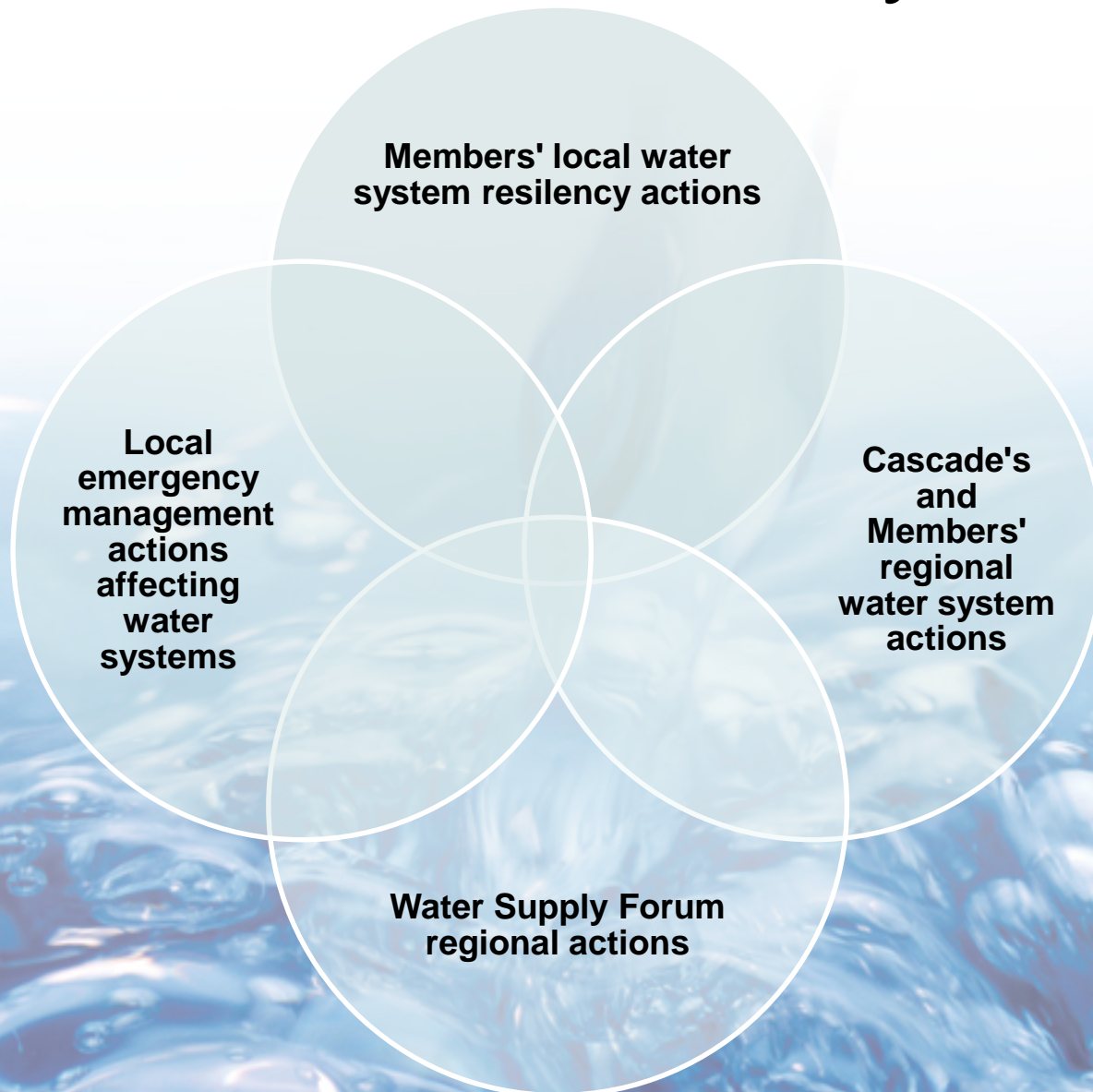


Cascade's Seismic Resiliency Planning

Presentation to Bellevue's
Environmental Services Commission

September 5, 2019

Intersection of Resiliency Actions



America's Water Infrastructure Act

- Risk and Resiliency Assessment and Emergency Response Plan required for populations of 3,300+
- Certification submittals to EPA by certain dates
- > 100,000 people served: Risk and Resiliency Assessment due 3/31/2020; Emergency Response Plan due 9/30/2020
- Recertification required every 5 years
- Specific tools and methods not required
- Plans must be coordinated with local emergency planning committees

Members' Workshop Objectives

With the understanding there is value in being proactive and collaborating regionally with respect to earthquake resiliency and in a way that complements (not duplicates or supplants) Cascade's and Members' current actions:

- Determine the highest priority uses for Cascade's \$200K annual budget and other priority regional efforts that don't require use of the budget.
- Develop high level work plans for the priorities.
- Understand how our priorities dovetail with other efforts (e.g. Water Supply Forum).

Members' and Cascade's Current Resiliency Actions

Common themes:

- Seismic studies and assessments
- Emergency response plans
- Coordination with emergency management offices
- Infrastructure hardening
- Emergency supplies and repair parts
- Post-event level of service goals

Members' and Cascade's Future Actions

- Top regional actions identified:
 - Conduct tabletop exercises
 - Research alternative water sources
 - Develop pre- and post-event communications between Members and with customers
 - Create an inventory list of emergency supplies
- High-level workplans developed
 - Deliverables, timeframe, \$ estimate, lead, intersection with others
- Two additional actions that Cascade will lead:
 - Research lessons learned from others
 - Determine method to allocate post-event water

Members' and Cascade's Future Actions

Next Steps:

- Detail out the work plans.
- Present actions that require using \$25K or more of Cascade's \$200K budget to Board.
- Check in on a regular basis and track our progress.
- Annually identify new future actions.

Water Supply Forum

- Water supply system resiliency a central Forum focus.
- Phase 1 (2015-16): Identification of key risks related to earthquakes, climate change, drought, and threats to water quality.
- Phase 2 (2018): In-depth study of earthquake risks and identification of short- and long-term action plans.

Forum's Future Actions

- Top Forum regional actions identified:
 - Update and share an inventory list of emergency supplies
 - Develop and issue consistent public messaging
 - Coordinate with local emergency managers to define roles and responsibilities
 - Jointly seek for funding for resiliency efforts
- High-level workplans developed (e.g. deliverables, timeframe, \$ estimate, lead)
- Check in quarterly and track our progress

Questions?

