



Watershed Management Plan – Open Stream Condition Assessment

2019 Update

Linda De Boldt, Jerry Shuster, Kit Paulsen, and Christa Heller | Utilities Department

June 6, 2019



Agenda

- Watershed Management Plan context
- Stream Condition Assessment
 - Project Background
 - Goal
 - Implementation
 - Initial Results
- Next Steps





Background

Storm and Surface Water Utility Mission:

- Control damage from storms
- Protect surface water quality
- Support fish and wildlife habitat



Storm and Surface Water System Plan

(Adopted by Council December 2015)

Set policies and plans to guide the operation of the Storm and Surface Water



Storm and Surface Water Initiatives:

Management practices to keep pace with Bellevue's development while maintaining City's environmental & property protection goals

**Open Stream
Condition Assessment**



**City-Wide Watershed
Management Plan**



Watershed Management Plan

- Policies
 - Performance goals (level of service)
 - Prioritize watersheds for investment
- Strategies
 - Operational Changes
 - Capital Projects
 - Regulatory changes
- Opportunities
 - Community Engagement
 - Partner with other City departments (Community Development, Transportation, and Parks)





Open Streams Condition Assessment Goal

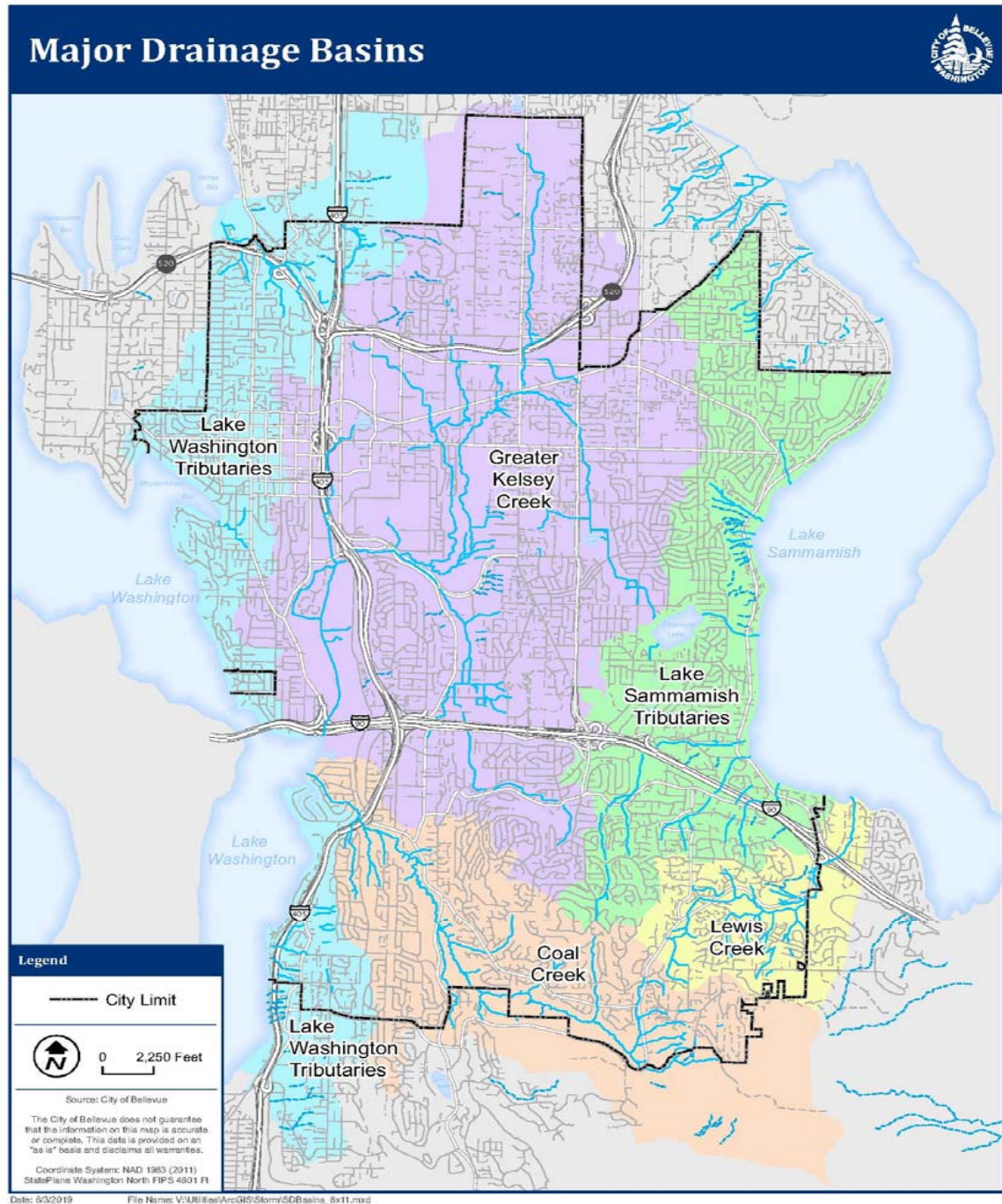
To gain a comprehensive understanding of current stream conditions and identify opportunities for improvement.





BELLEVUE STREAMS

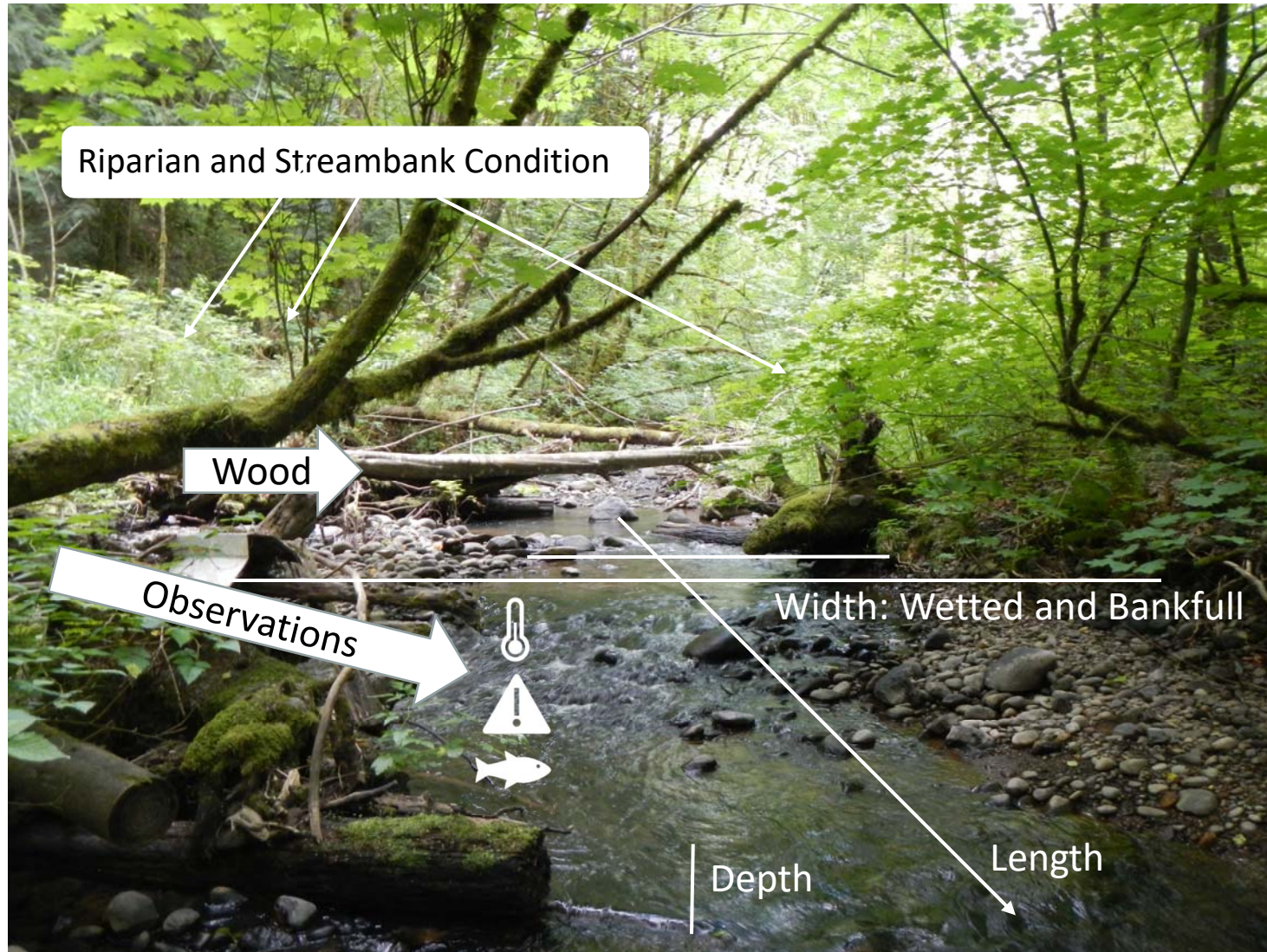
- 80 miles of streams will be surveyed throughout the City



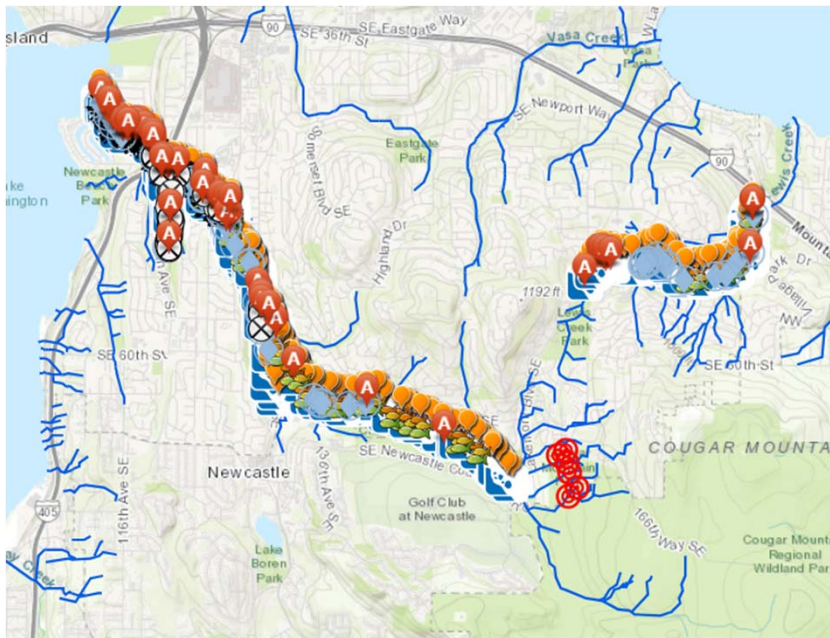
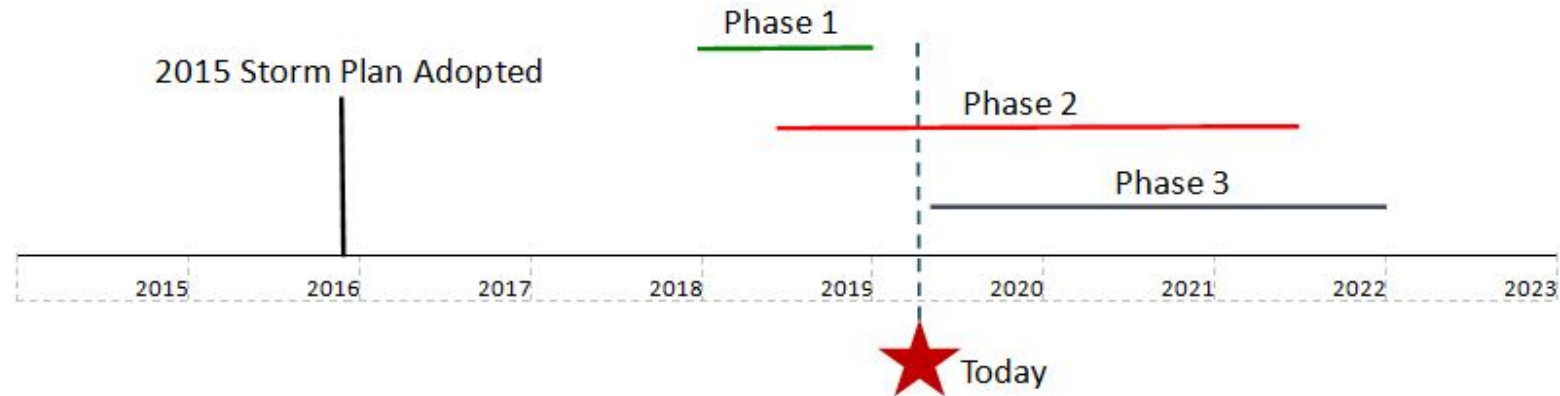
Stream Habitat Surveys



The purpose of these surveys is to assess the health of our stream basins and identify opportunities for improvement.



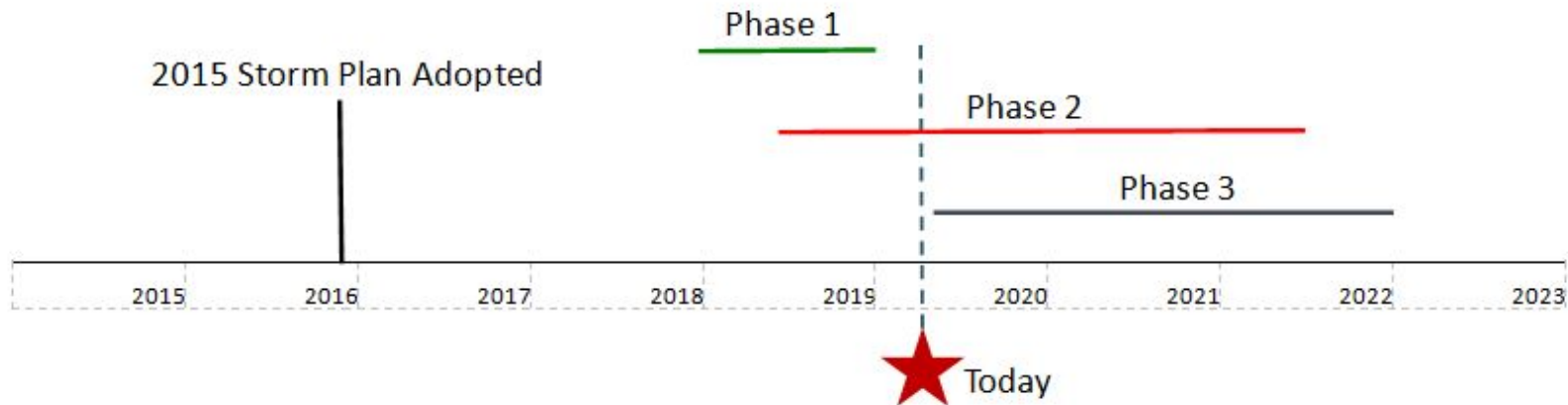
Phase 1: Complete



- ✓ Selection of Stream Habitat Protocol
- ✓ Prioritization of Stream Basins
- ✓ Creation and Utilization of a GIS based data collection Application



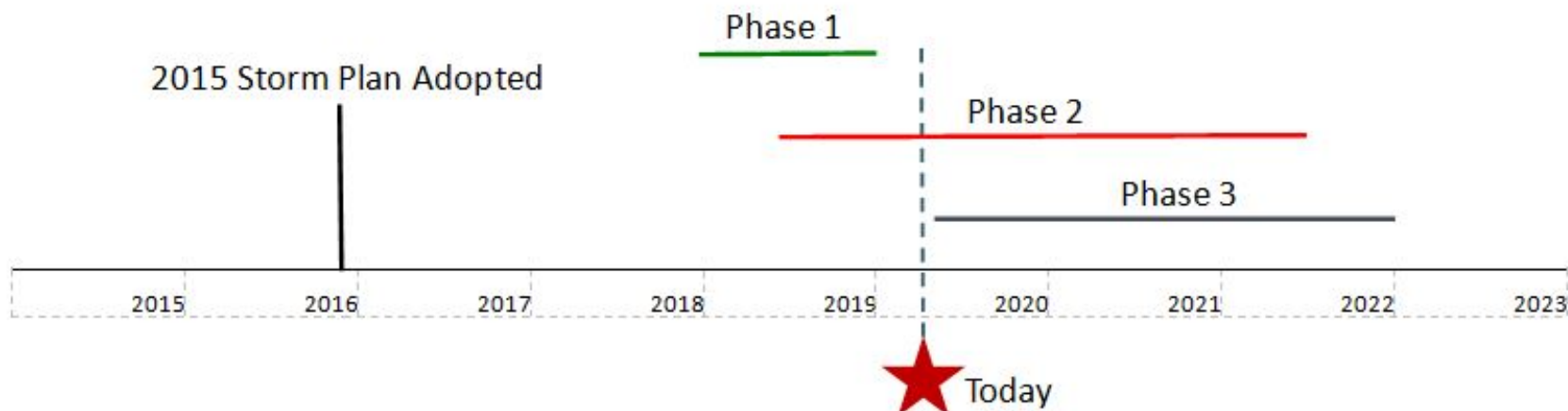
Phase 2: Ongoing through 2022



- Rights of Entry for streamside private property
- Stream Habitat Assessments
 - ✓ Over 15 miles of stream data collected
- Data Management and GIS Mapping
- Data Analysis
- Coordination with both internal and external stakeholders



Phase 3: To begin in late 2019



- Report Writing
- Integration with the Watershed Management Plan

Early Results

Coal Creek
Mouth (L. Washington) to
Lakemont Blvd
(River Mile 0.0 to 4.9)

- Large Woody Debris (LWD)
 - Very Good
 - Total: 2,354 pieces
 - Average: 492 pieces/mile
 - Greatest quantities were found in the Cinder Mines/Red Town segments
 - Greatest deficiencies in segments near Newport Shores and area just upstream of Coal Creek Parkway



Next Steps -

Open Stream Condition Assessment

- Continue the field data collection for the remainder of the streams.
- Synthesize the data for reporting and use in the Watershed Management Plan



Next Steps -

Watershed Management Plan

- Scope of Work
- Schedule & Strategy for Plan Development
- Outreach and Engagement Strategy



Questions?

