

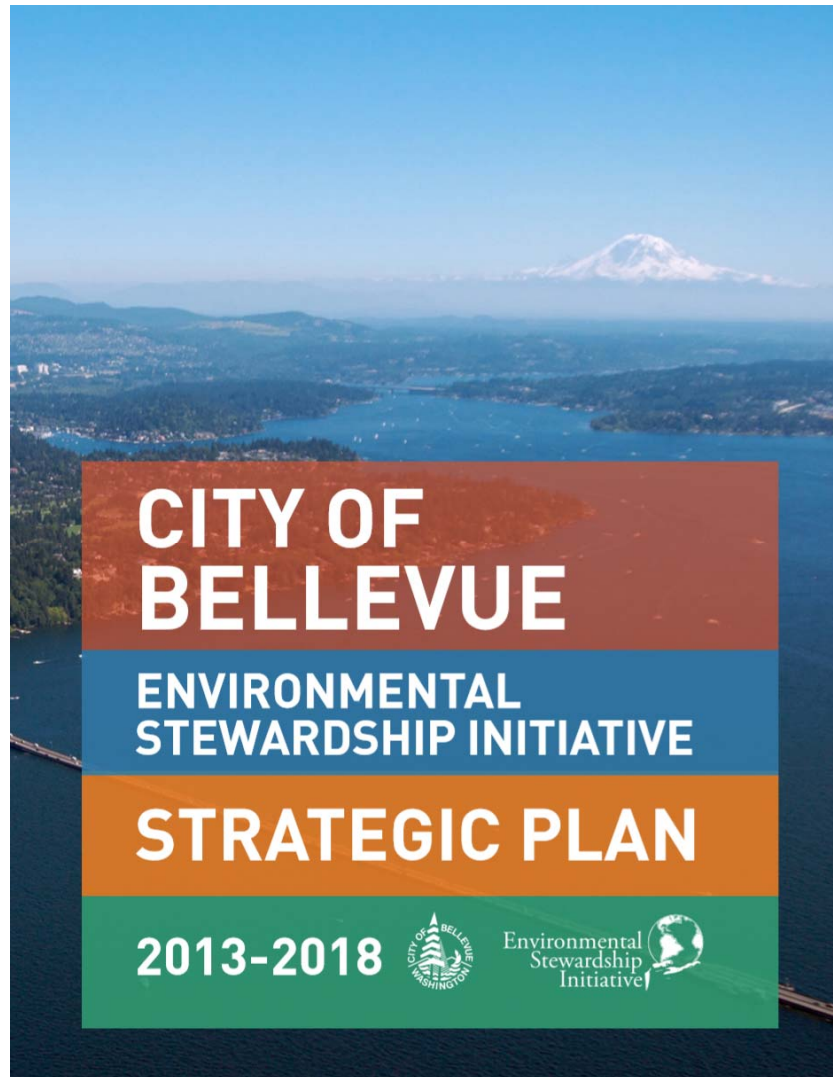
Environmental Stewardship Plan



Environmental Services Commission
**Jennifer Ewing, Environmental Stewardship
Program Manager**

January 16, 2020

Building on a Foundation



- Environmental Stewardship Initiative (ESI) Started in 2007
- Mayors Climate Protection Agreement
- Joined King County in Cities Climate Collaboration (K4C)
- 2013-2018 ESI Strategic Plan: Made Progress on 96% of the strategies
- Directed by Council to lead by example

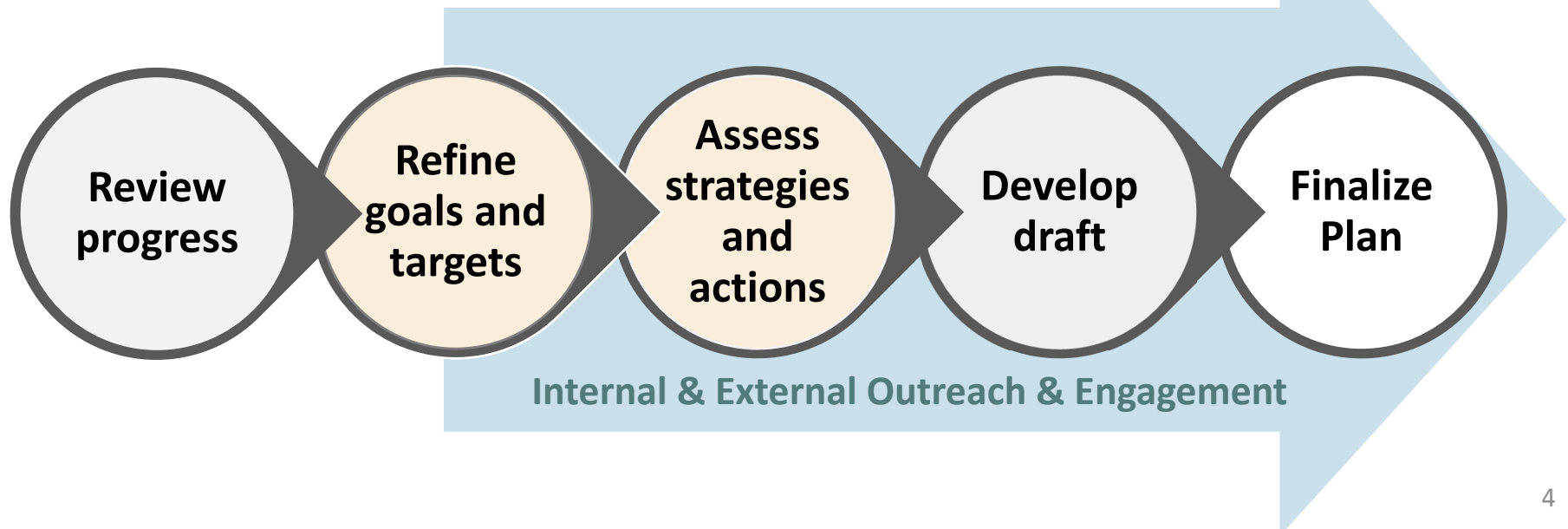
Council Direction for Boards and Commissions

- Engage with all Boards and Commissions
(Nov 12 2019 Council Study Session)
- Boards and Commissions Role:
 - Provide input on possible strategies and actions for the plan
 - No formal action is needed



Environmental Stewardship Plan Update Process

City Council Vision Priority #11

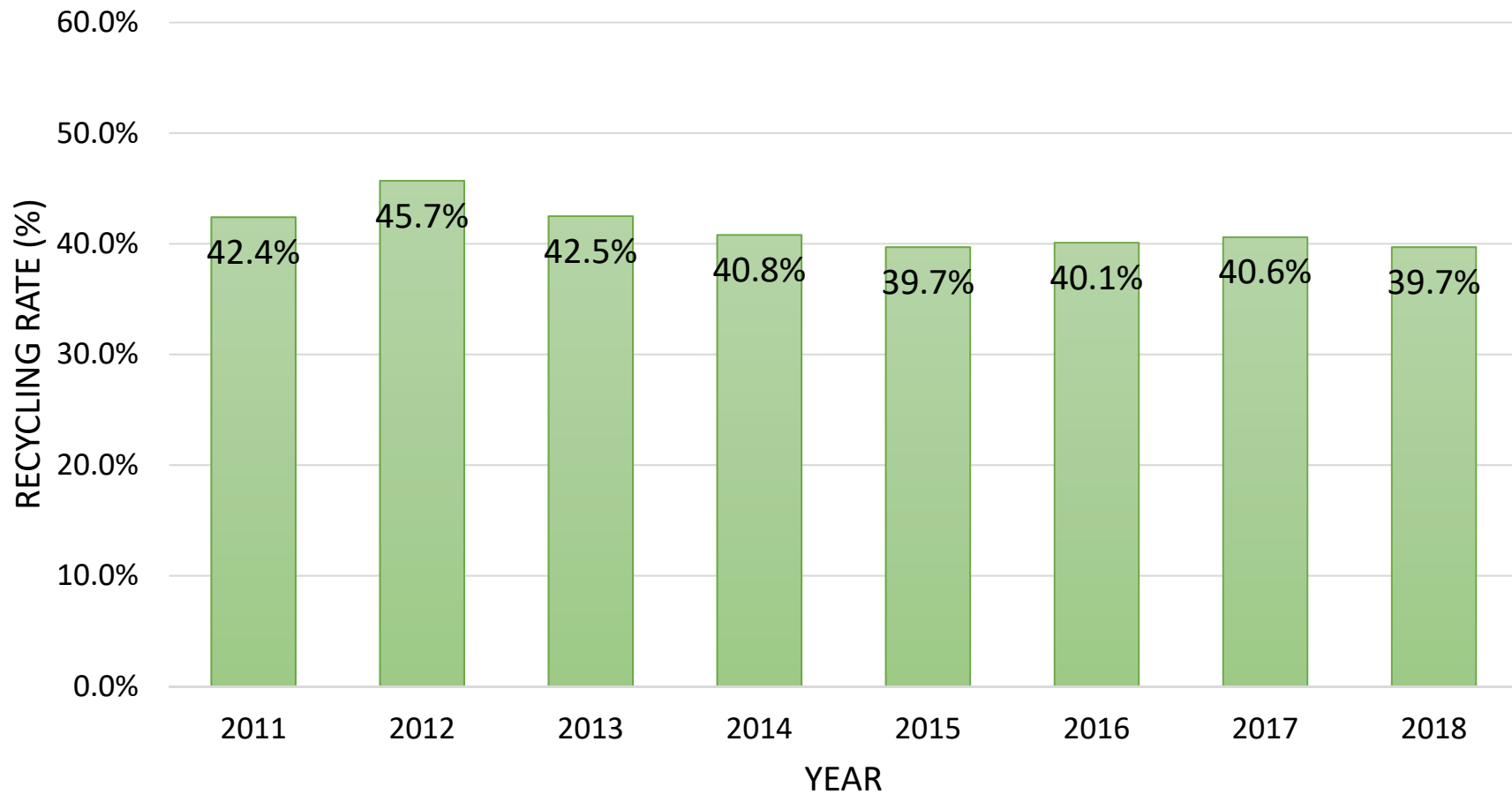
Review progress of ESI and analyze additional steps the City may take to achieve its environmental goals.



Community Targets

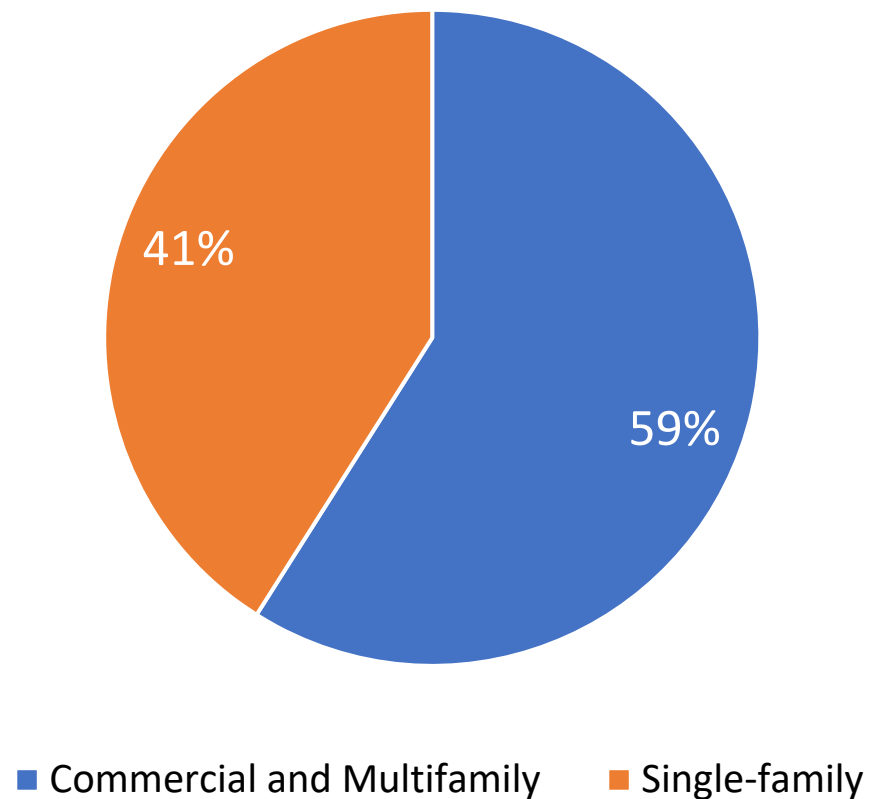
	 PROGRESS SINCE 2011	 2050 TARGETS
MATERIALS MGMT & WASTE	40% Recycling Rate	Zero Waste
MOBILITY & LAND USE	65% Drive Alone Rate (Residents) 2% EV Ownership 3% VMT/Capita Reduction 63% Jobs & 42% Housing within ¼ mile of freq. transit station	45% Drive Alone Rate 50% EV Ownership 50% VMT/Capita Reduction 85% Jobs & 65% Housing within ¼ mile of freq. transit station
ENERGY	40% Renewable Energy 5% Energy Use Reduction	100% Renewable Energy 30% Energy Use Reduction
NATURAL SYSTEMS	37% Tree Canopy Cover 73% 1/3 mile to Park Access	40% Tree Canopy Cover 100% 1/3 mile to Park Access
CLIMATE CHANGE	9% GHG Reduction (22% per capita reduction)	80% GHG Reduction

Overall Recycling Rate

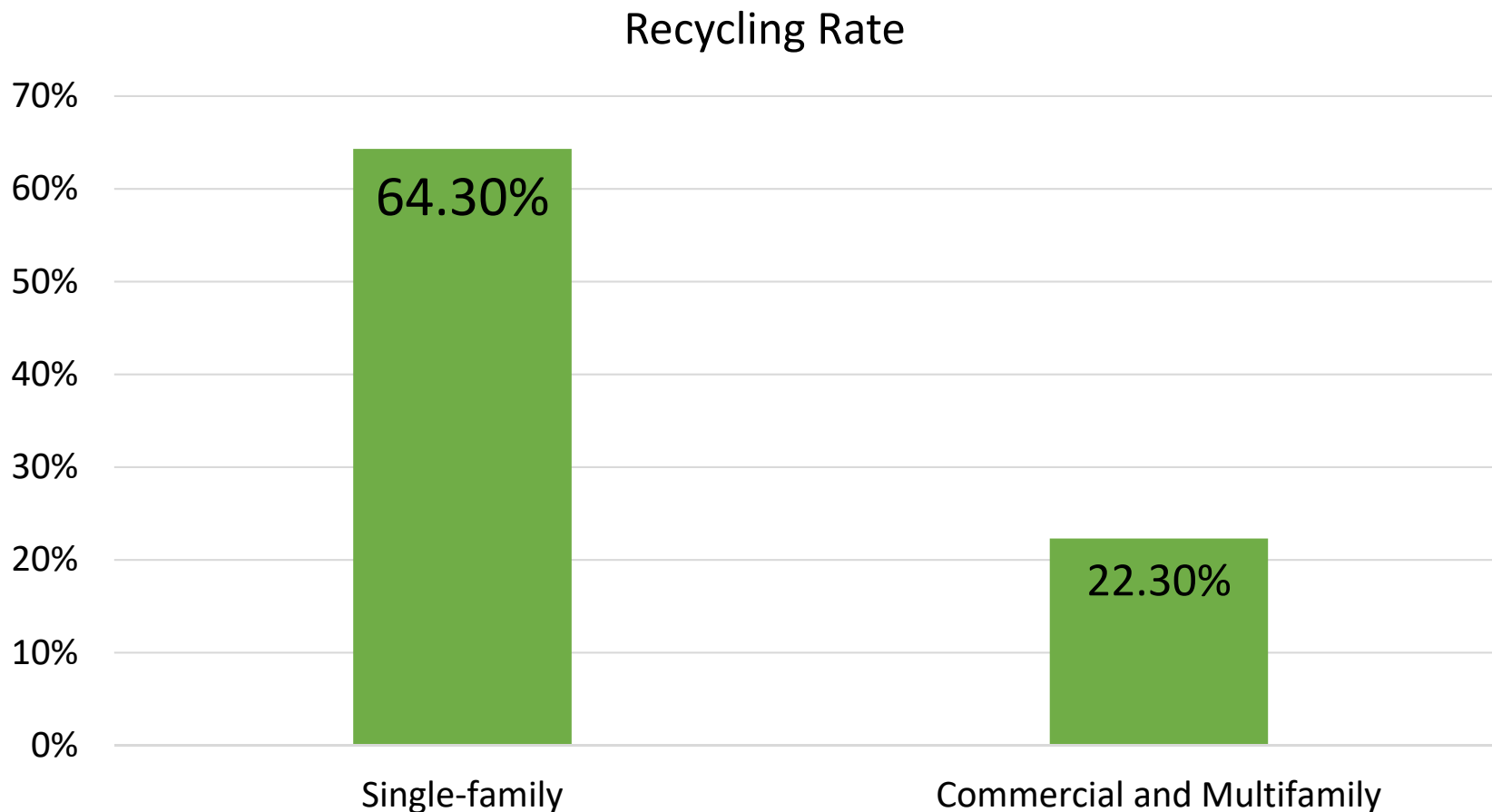


Sources of Waste

Sources of Waste by Household

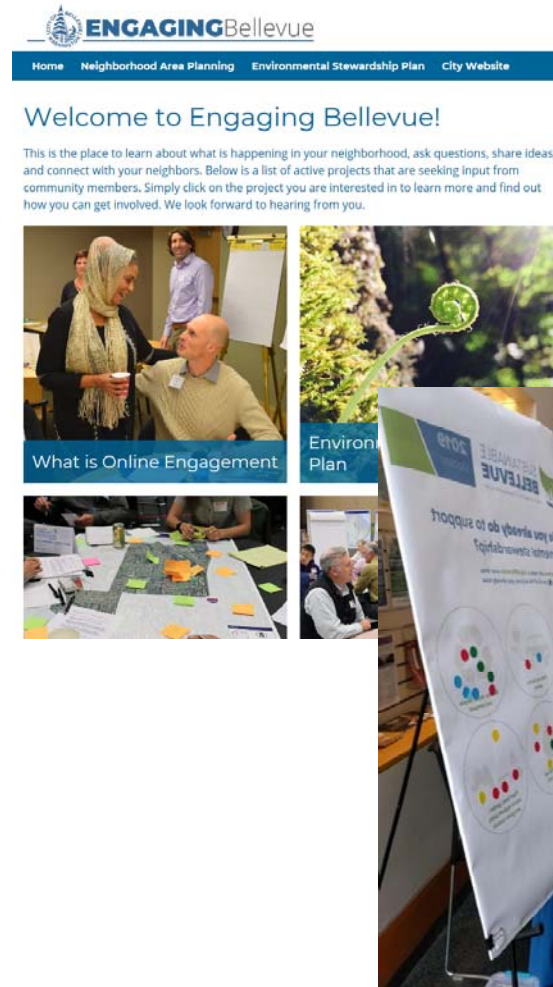


Single-family vs Multifamily/Commercial Recycling

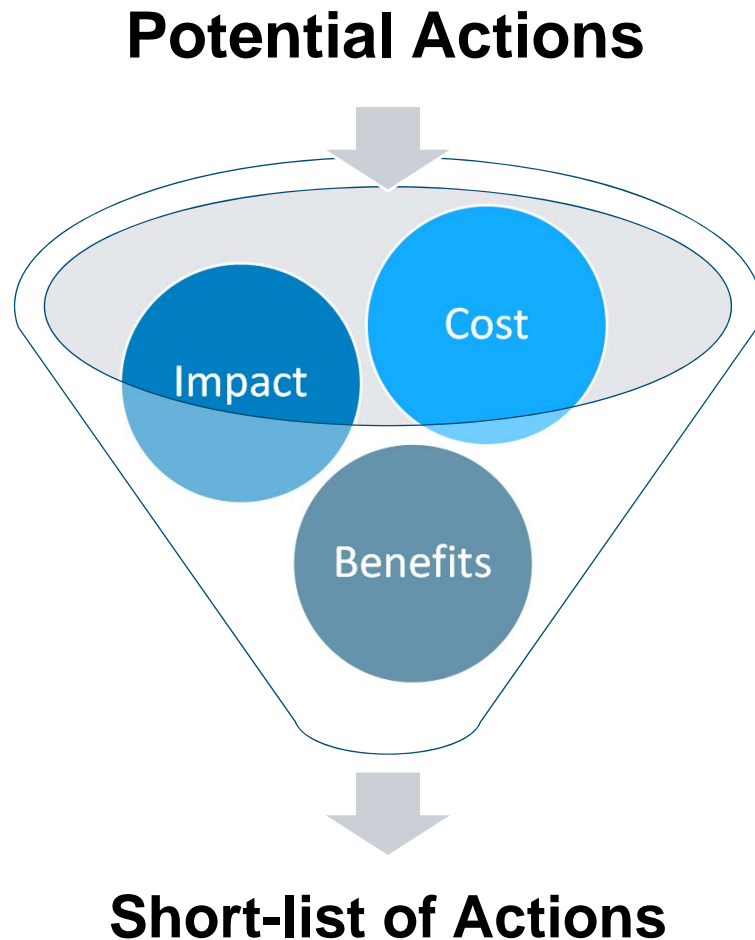


Public Engagement

- **87%** say that climate change is an important issue to them personally
- **77%** want Bellevue to be ambitious
- Key issues:
 - Trees
 - Water quality
 - Waste/recycling
 - Single-use plastics
- Considerations:
 - Leadership
 - Cost benefits



Strategy Development



ESC Related Topics:

- Waste and recycling
 - Multi-family and commercial
 - Construction and demolition waste recycling
 - Single-use plastics
- Stormwater / low impact development

Next Steps

Analyze and short-list possible
strategies and action



Outreach and Engagement



Draft Plan



Review draft
plan with
Council



Council
Adoption of
Plan

Nov

Dec

Jan

Feb

Mar

Apr

May

Jun

July

Aug

Discussion

- Would the ESC like to suggest any strategies or actions for consideration in the benefit cost analysis and public outreach?
- What are the greatest areas of opportunity for increasing recycling and organics collection? And for increasing the benefits of low impact development?



Thank you!
Q&A Discussion



Jennifer Ewing, ESI Program Manager, Community Development