

Environmental Stewardship Plan



Environmental Services Commission

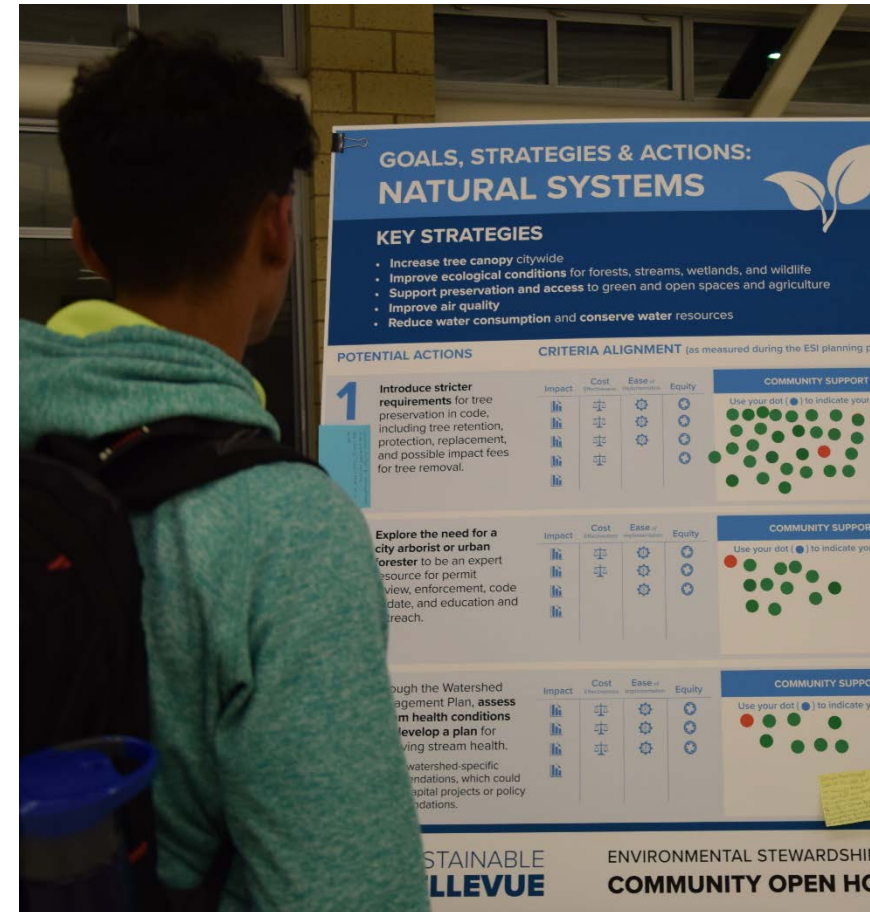
Ana McMahon, Resource Conservation Program Manager

Liesl Olson, Management Fellow

August 20, 2020

Presentation Overview

- Progress since last presentation (Jan 16, 2020)
- Updated goals and targets
- Outreach and engagement overview
- Draft list of actions
- Impact of COVID-19 on ESI plan and revised timeline
- **Discussion:** Input from Commission on draft actions



Council Direction for Boards and Commissions

City Council Vision Priority #11

Review progress of ESI and analyze additional steps the City may take to achieve its environmental goals.

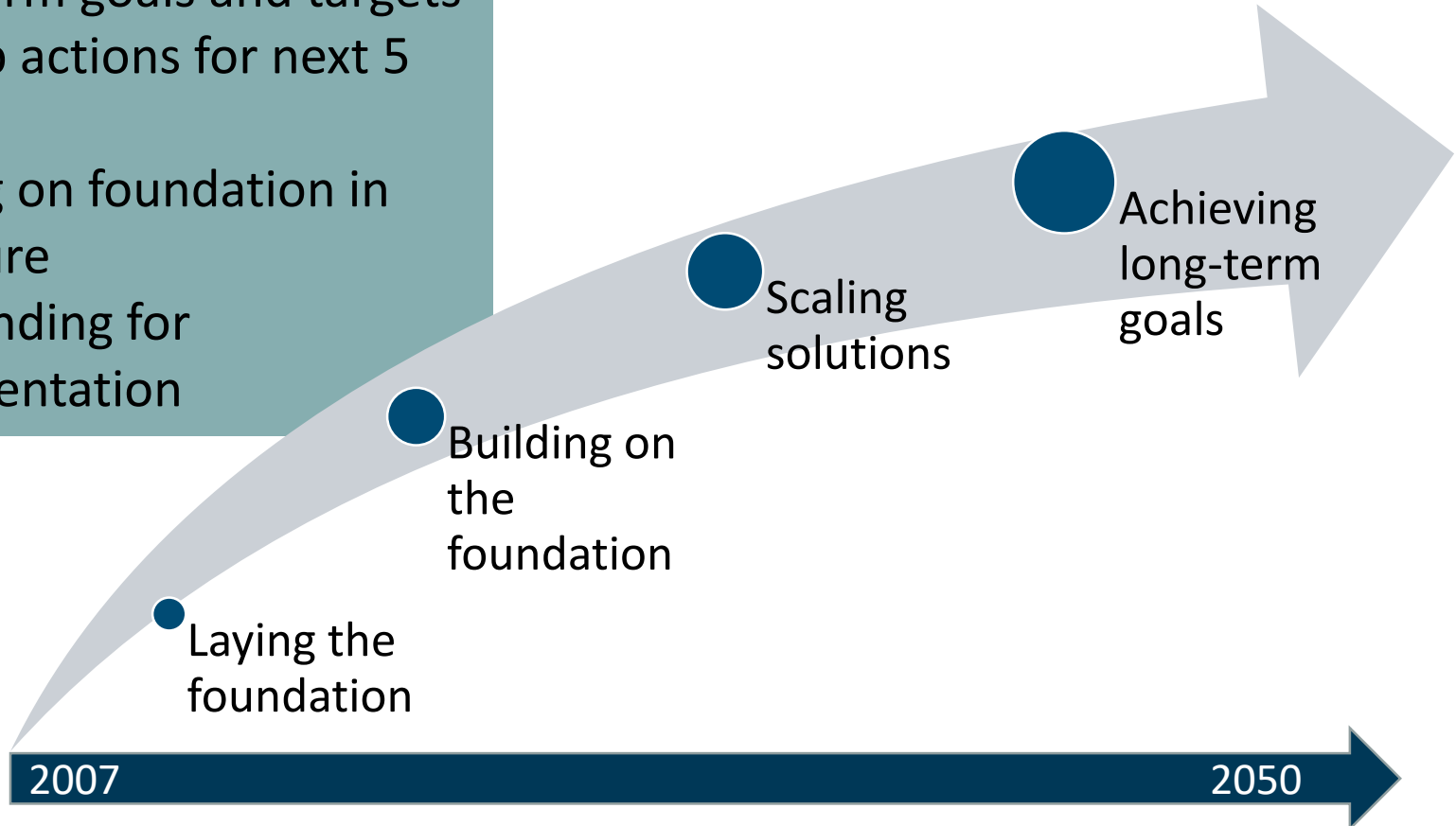
- Engage with all Boards and Commissions
(Nov 12, 2019 Council Study Session)
- Boards and Commissions Role:
 - Provide input on possible strategies and actions for the plan
 - No formal action is needed



Framework for the Plan

2020-2025 ESI Plan

- Establish long-term and short-term goals and targets
- Develop actions for next 5 years
- Building on foundation in the future
- Seek funding for implementation

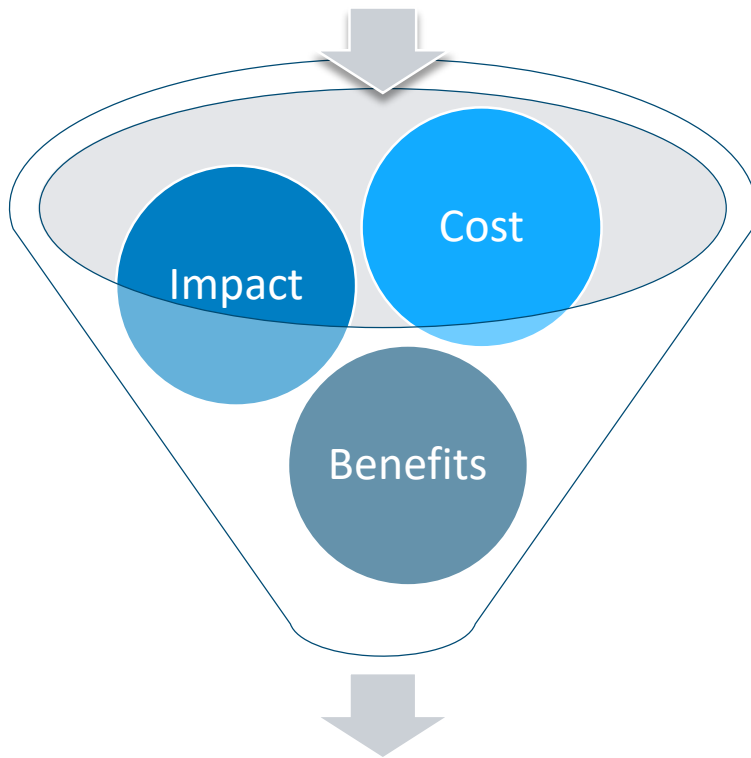


Communitywide Targets

	2030	2050	
MATERIALS & WASTE	50%	90%	Recycling Rate (or Zero Waste)
MOBILITY & LAND USE	65%	45%	Drive Alone Rate
	25%	100%	Electric Vehicles
	20%	50%	VMT/Capita Reduction
	75%/50%	85%/65%	% of Jobs % Housing } Within ¼ mile of freq. transit station
ENERGY	75%	100%	Renewable Energy
	10%	30%	Energy Use Reduction
NATURAL SYSTEMS	38%	40%	Tree Canopy Cover
	80%	100%	1/3 mile to Park Access
CLIMATE CHANGE	50%	80%	Greenhouse Gas Reduction

Strategy Development

Potential Actions



Short-list of Actions

Waste and Natural Systems Related Strategies:

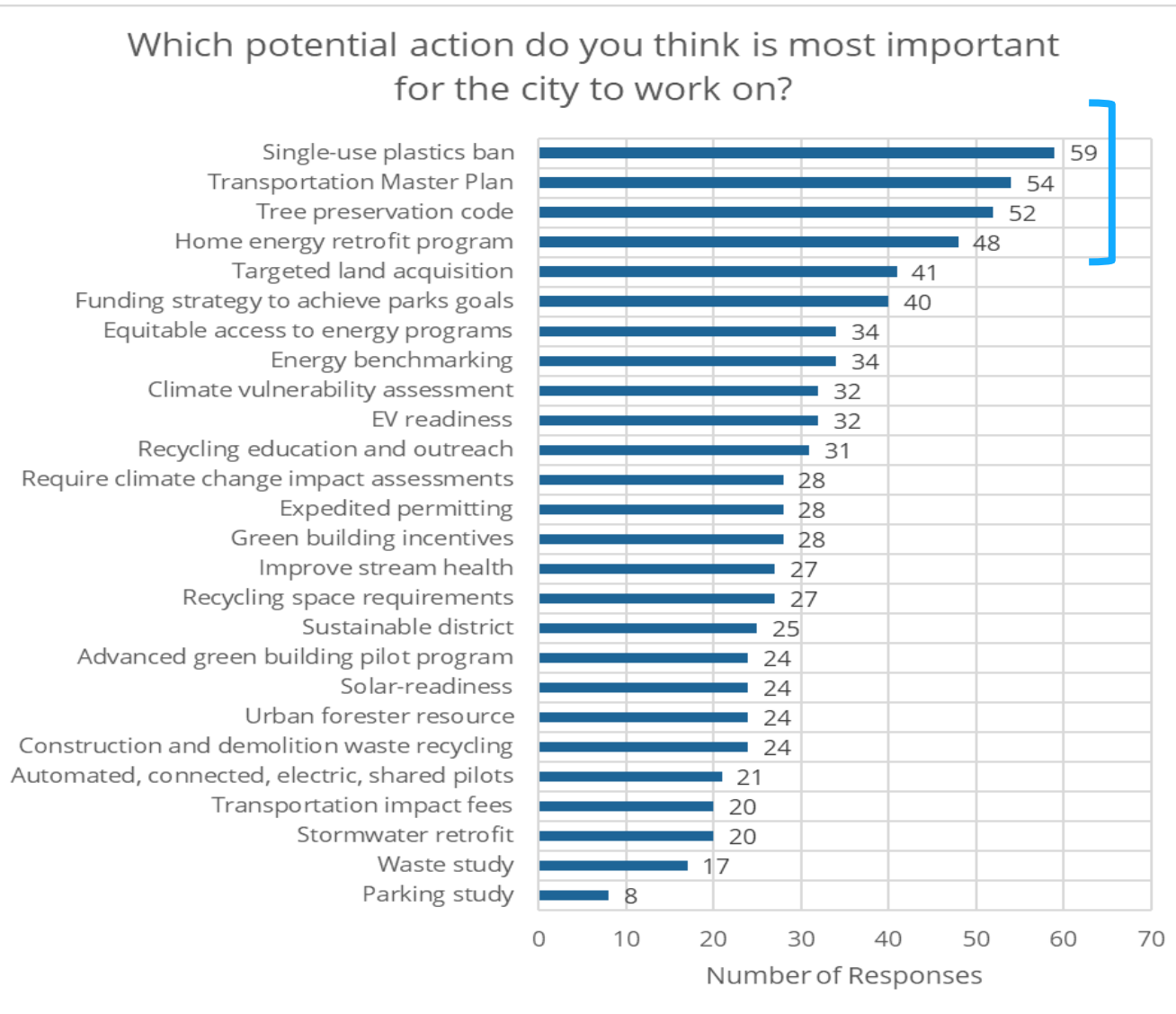
- Waste Reduction
 - Multi-family and commercial
 - Single-use plastics
 - Food waste reduction
- Stormwater / low impact development

Public Engagement

- Open House on March 3
- Online Survey: 600+ respondents
- Earth Week: Climate Anxiety Talk and Online Town Hall
- Business Focus Groups and Bellevue Chamber presentation
- BSD Sustainability Town Hall



Top Actions



Draft Actions



Materials Management and Waste

- Recycling Education / Outreach
- Single-use Plastics Ban
- Construction/Demolition Waste Recycling
- Recycling Space Requirements
- Waste Study
- Food Waste Prevention
- Assess Waste Strategies



Natural Systems

- Improve Stream Health
- Stormwater Retrofit

COVID and Climate Change

Flattening the Curve on Climate

- Prioritizing strategies which reduce costs for residents and businesses
- Support job growth
- Consider economic recovery timing in implementation planning for Environmental Stewardship Plan
- Incorporating sustainability into economic recovery

Revised Timeline

Strategy Analysis

Boards and
Commissions

Phase 2 Outreach

Boards and Commissions

Draft Plan

Draft Plan
Outreach

Council
Draft
Plan

Council
Adoption

Feb

Mar

Apr

May

Jun

Jul

Aug

Sept

Oct

Nov



Thank you!
Q&A Discussion



Ana McMahon, Resource Conservation Program Manager
Liesl Olson, Management Fellow