

Environmental Outreach in a Covid-19 Environment

Erin Hislop
Utilities

January 7, 2021



Direction Needed from Council

- No action by the Commission is required. This is an informational briefing.



Agenda

1. Outreach Approach
2. Reaching Residents
3. Assisting Multifamily Properties
4. Assisting Businesses
5. Supporting Distanced Learning and Bellevue Youth
6. Planning For The Future



Outreach Approach



Outreach Approach

1. Provide service continuity in new ways during COVID-19
2. Determine additional services needed to address new needs
3. Utilize creative partnerships
4. Ensure longevity of new resources beyond the pandemic
5. Incorporate updated Environmental Stewardship Plan solid waste goals



Reaching Residents

Single-family and multifamily residential outreach strategies

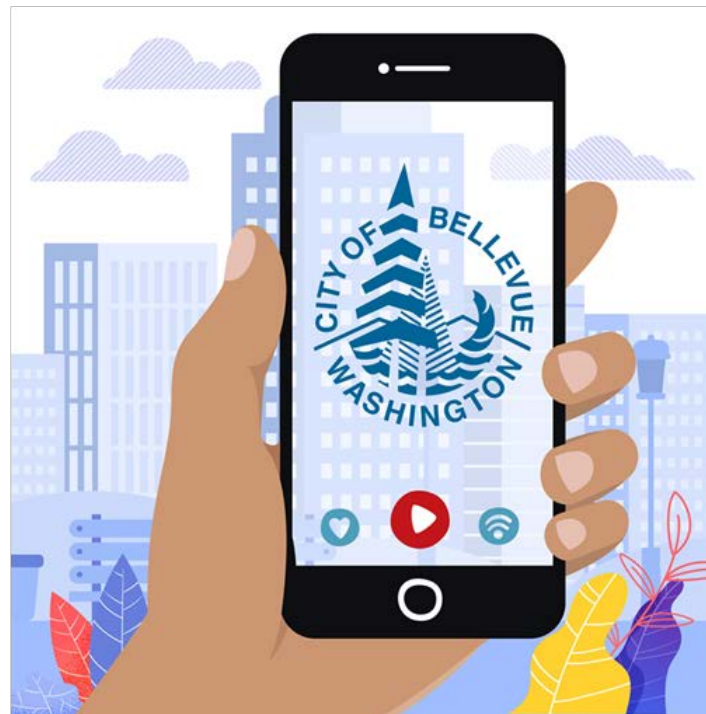


In-person workshops redesigned to virtual formats



New virtual service

The Great Bellevue Scavenger Hunt October 2-30, 2020



Curbside pickup opportunities



Creative partnerships



City of Bellevue, Washington - Government

6d · 🌐

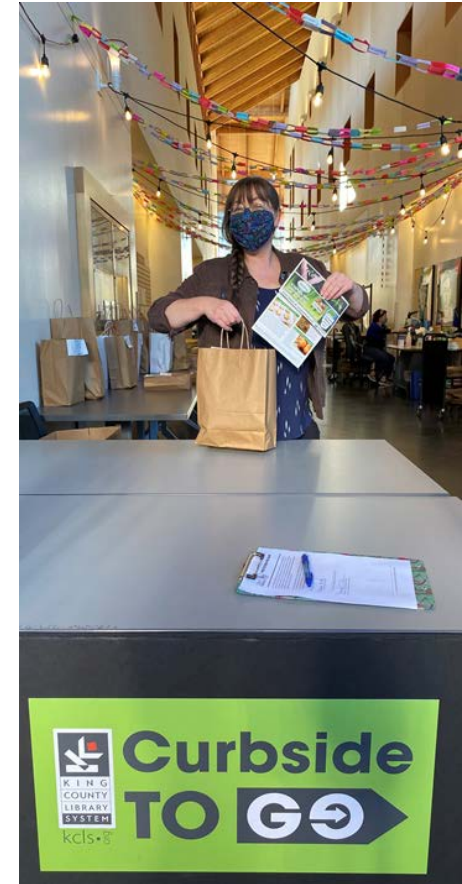
The city joins [Bellevue Arts Museum](#) in offering BAM-O-WEEN TO GO this year. 2,000 creepy craft-making kits will be available for contactless pickup outsid... See More



BELLEVUEARTS.ORG

BAM-O-WEEN To Go

In lieu of our usual BAM-O-WEEN program, we're giving a...



City of Bellevue

Utilizing media channels

- Neighborhood News
- It's Your City
- City Social Media
- Republic Services website
- Partner organization social media and newsletters



Assisting Multifamily Properties



Virtual and contactless support



Increasing composting



Reaching families



ZERO WASTE CHALLENGE AT HOME PLEDGE



LEARN

I will find out what is recyclable in my Bellevue home by visiting www.bellevuewa.gov/recycleright

REDUCE AND REUSE

I will reduce garbage by trying three waste reduction or reuse actions at home, by the end of the month.

1. _____
2. _____
3. _____

RECYCLE RIGHT

I will only recycle clean, empty and dry items. I will make sure boxes are flattened before placing in the recycling bin.

SHARE (optional)

With permission from an adult, email a photo or example of how you reduced waste to recycle@bellevuewa.gov by December 1. You will be entered for a drawing on December 2 for a chance to win a reusable sandwich bag made from recycled plastic bottles.



Assisting Businesses



Cost saving actions

For Businesses

Recycling help during COVID-19

Your Bellevue business' solid waste streams may look different while operating under reduced capacity during COVID-19. Bellevue Utilities staff are available to help!

Contact recycle@bellevuewa.gov or 425-452-6197 to request support with waste reduction and recycling options that may help at this time, including:

- Recommendations for right-sizing your outdoor waste bins or frequency of service to help save money
- Staff training and signage to help with properly sorting recyclables to reduce waste and avoid increased garbage costs
- Other personalized assistance with waste reduction and recycling solutions that can benefit your business and our environment



Virtual and contactless support



Targeted outreach to food generating businesses



Recycling assistance for paint retailers and motor oil collections



Supporting Distanced Learning and Bellevue Youth



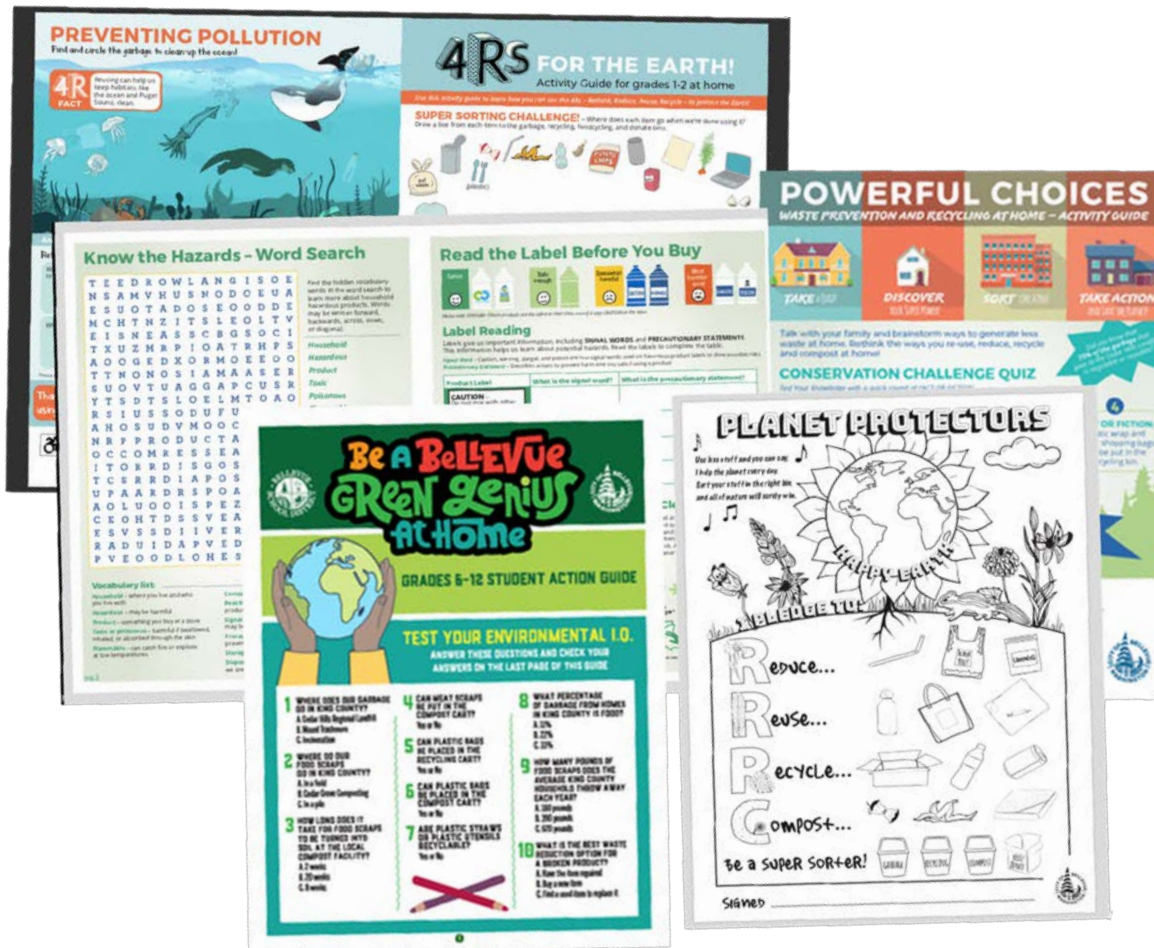
Virtual classroom presentations and remote curriculum



Partnerships with youth organizations



Home activity guides



Planning For The Future



Systemic approaches

- Zero Waste Events
- Facilities and infrastructure



Conclusion



Questions?

