

2022 Parks & Open Space System Plan Update

PARKS & COMMUNITY SERVICES BOARD

January 11, 2022



Bellevue Parks &
Community Services



City of Bellevue

Agenda

- Welcome (5 min)
- Outreach summary (10 min)
- Draft plan review (45 min)
- Closing and next steps (5 min)



Project Timeline



Public Involvement - Surveys

- **Statistically valid (ABS) resident survey**
 - 470 responses
 - 78% conducted online, 22% conducted by phone
 - 5% completed in a language other than English
- **Open park user survey**
 - 400 responses
 - All online
 - 1% completed in a language other than English

Completed Surveys by Neighborhood

	Address-Based Sample	Open Survey	Total
Bel-Red	(n=7)	(n=6)	(n=13)
Bridle Trails	(n=31)	(n=17)	(n=48)
Cougar Mountain	(n=39)	(n=29)	(n=68)
Crossroads	(n=26)	(n=16)	(n=42)
Downtown	(n=89)	(n=48)	(n=137)
Eastgate	(n=17)	(n=55)	(n=72)
Factoria	(n=9)	(n=5)	(n=14)
Lake Hills	(n=46)	(n=55)	(n=101)
Newport	(n=25)	(n=20)	(n=45)
Northeast Bellevue	(n=29)	(n=17)	(n=46)
Northwest Bellevue	(n=35)	(n=11)	(n=46)
Somerset	(n=23)	(n=25)	(n=48)
West Bellevue	(n=29)	(n=35)	(n=64)
West Lake Sammamish	(n=21)	(n=19)	(n=40)
Wilburton	(n=18)	(n=15)	(n=33)
Woodridge	(n=21)	(n=10)	(n=31)
Total by source	(n=465)	(n=383)	(n=848)

Survey Data

Use of Park and Recreation Facilities

	Anyone in Household/Yr
Trail through natural areas	79%
Paved or gravel trails	79%
Community beach, waterfront park, or boat launch	67%
Parks with display gardens	63%
Open areas for unstructured play	60%
Outdoor sports fields or courts	45%
Playgrounds	44%
Community / visitor centers	31%
Indoor sports facilities / fitness centers	24%
Designated off-leash dog areas	22%
Swimming pools	14%
Other	2%



Survey Data

Frequency of Park and Recreation Facility Use

	Average Household Usage/Yr
Paved or gravel trails	7.5
Trail through natural areas	7.2
Playgrounds	5.4
Community beach, waterfront park, or boat launch	4.9
Open areas for unstructured play	4.8
Outdoor sports fields or courts	4.4
Parks with display gardens	3.5
Community / visitor centers	1.6
Indoor sports facilities / fitness centers	1.5
Swimming pools	1.4
Designated off-leash dog areas	1.1
Other	0.1

Survey Data

Reasons for Visiting Parks and Recreation Facilities

	Anyone in the Household
To enjoy or experience nature and open spaces	74%
To relax	67%
To exercise outdoors or engage in outdoor sports	64%
To spend time with family and friends	64%
Participation in unstructured recreation (e.g. playground)	32%
To exercise in an indoor facility or engage in indoor sports	20%
Participation in structured recreation (e.g. sports)	19%
To attend or participate in a cultural or community event	17%
To participate in a class for fitness, education or personal enrichment	12%
Some other reason	8%

Survey Data

Access to Parks, Trails, or Recreation Facilities

87%

Live or work within a 10-minute
walk of a park, trail, or facility

Of those...

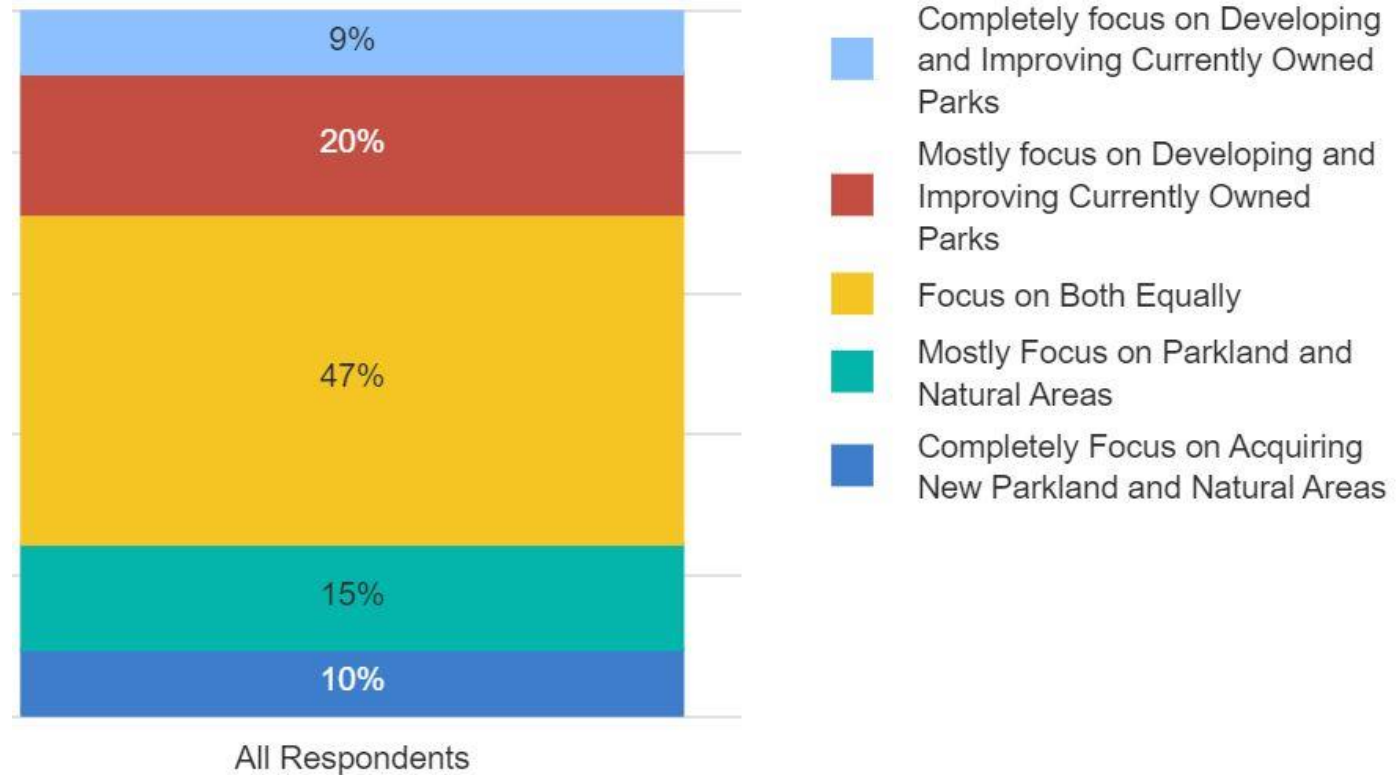
95%

State that they can reach the
park, trail, or facility safely



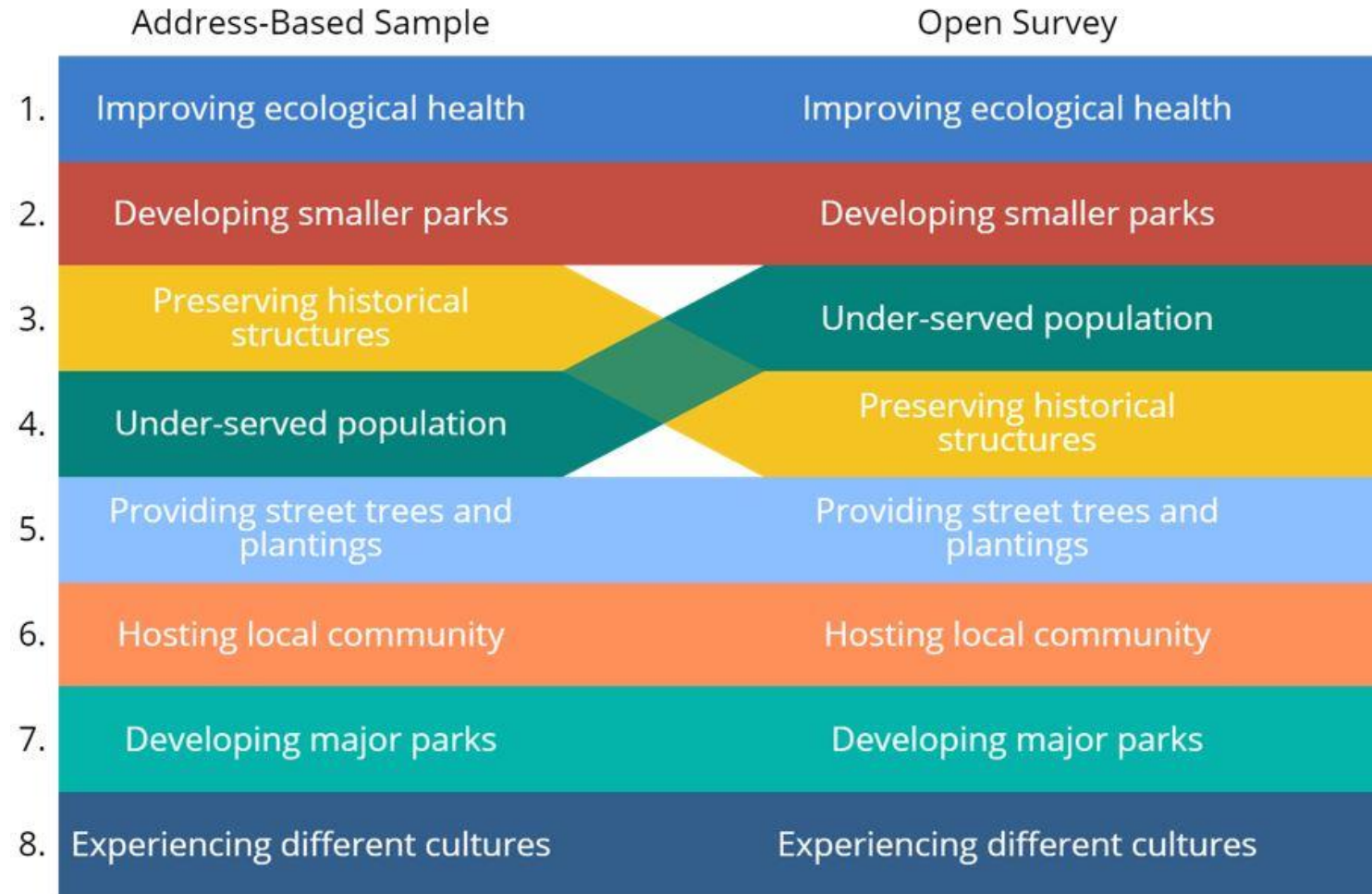
Survey Data

10 Year Focus



Survey Data

Funding Priorities



Survey Data

Development Facilities Priorities



Survey Data

Development Groups Priorities



Public Involvement

- Engaging Bellevue hub
 - 140 ideas were shared
- Outreach to:
 - Boards and commissions
 - Neighborhood groups
 - Community groups
- Publications, social media

Home » Input for Parks and Open Spaces!

Input for Parks and Open Spaces!



Do you want to help shape the future of Bellevue's parks and open space? Bellevue Parks and Community Services is updating the long-range Parks and Open Space System Plan and we want to hear from you.

Many of the Bellevue parks and trails we use and treasure today started as ideas in the parks plan! The parks plan provides guidance on all aspects of the parks, trails, and open space system throughout Bellevue, including areas for recreation and play, undeveloped spaces for exploring the natural world, trails that connect communities, and more. The parks plan provides direction specifically on the acquisition, development, and management of parks and open space.

- What do you like about the parks system and what might you like to see more of?
- How can we provide safer and expanded access to parks and trails?
- What can be done to ensure that we are reaching all populations in Bellevue?

Please take 5 minutes and share your input for the Parks and Open Space System plan! The survey will be available through November 8th. It is available in Chinese (simplified and traditional), English, Korean, Russian, Spanish, and Vietnamese.

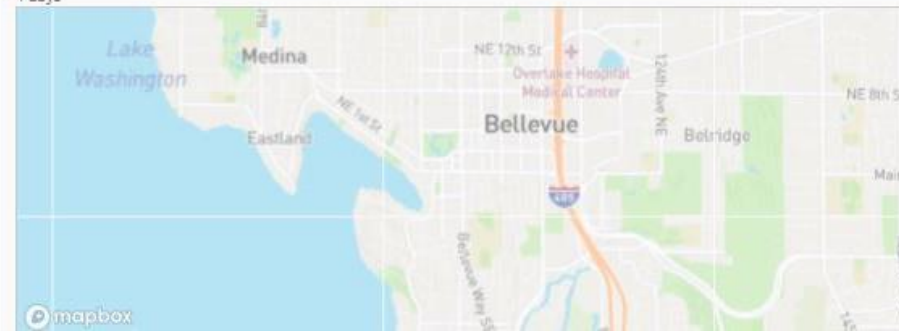


[PARKS AND OPEN SPACE SYSTEM SURVEY](#)

MAP IDEAS

Map Your Idea!

4 days



Key Dates

Neighborhood Leadership Gathering: Parks and Open Spaces
October 07 2021

Who's Listening

Ryan Walker

Planner
Parks and Community Services

Phone 425-452-4280
Email rwalker@bellevuewa.gov



Documents

- ☐ 2016 Parks and Open Space System Plan
- ☐ Parks and Open Space System Map
- ☐ Park Plan Capital Projects Map 2016
- ☐ Park Plan 1/3 Mile Access Map 2016

Important Links

[Parks and Open Spaces System Plan Website](#)

Lifecycle

- ☒ **Spring 2021**
Project initiated and scoping completed
- ☒ **Summer 2021**
Initial meetings with Parks & Community Services Board; parks and open space inventory
- ☐ **Fall 2021**



City of Bellevue

Public Involvement

- **Common input**
 - Parks are well maintained and important to the quality of life
 - Protect natural resources & open space we have left
 - Expanding local trail connections and wayfinding is important
 - Parks needed in specific neighborhoods, particularly high growth areas and those with minimal existing access
 - Design parks facilities for interaction and gathering
 - Consider a variety of facilities in our parks, including those for emerging sports such as pickleball and cricket, off-leash areas, skating, and dispersed fields/courts around the city
 - Provide relevant facilities for a diverse population, including those with disabilities, the active aging community, youth, and different ethnicities.
 - Preserve history and cultural resources. Consider additional interpretation.

Board Discussion



Working Draft Plan Review

Objectives

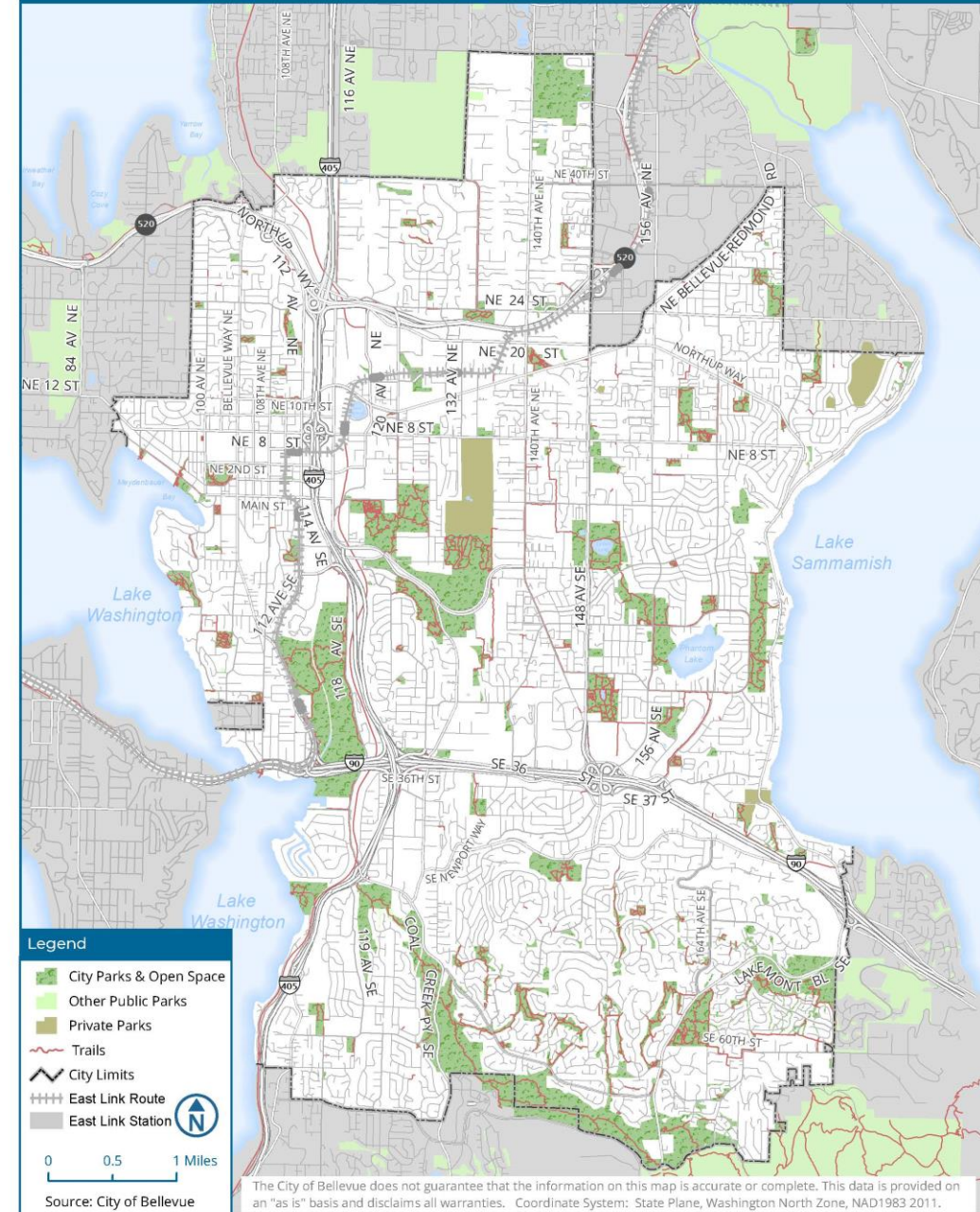
- **Identify significant edits/additions to language**
- **Focus on the big ideas**
- **Consider what may be missing**
- **Finalize Capital Project Objectives chapter**
- **Review next steps and prepare to recommend the plan forward in February**

About this Draft

- **This is an update - Edits and additions are based upon public and staff input and changes in the city since 2016**
- **Language is not final; additional review can be sent post-meeting**
- **Formatting is not complete**
- **Order of contents may change slightly for flow purposes and to meet RCO requirements**

Introduction

- Current status of referenced larger projects updated
- Additional, non substantive edits may be made prior to adoption



Bellevue, A City in A Park

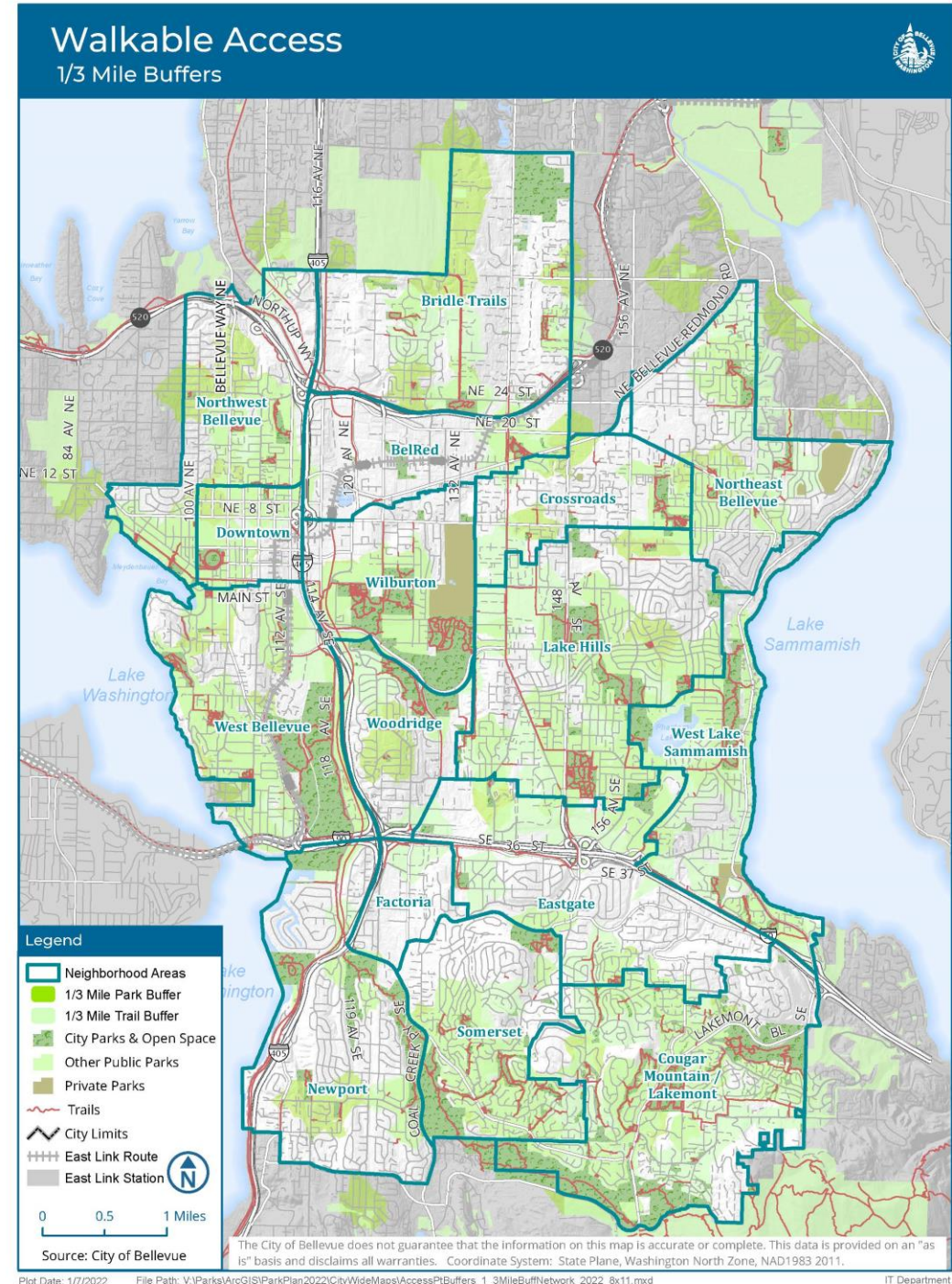
Section	Notes
Community Profile	Updated with the most recent statistics
Natural Resources	Minor edits made, additional language forthcoming
Park system and current use	Updated inventory numbers Updated/added narrative on system use
Recent capital projects	Added projects completed since the last update in 2016

Policy Framework

Section	Notes
Comprehensive Plan vision and Parks & Open Space System elements	Described from 2015 Comprehensive Plan No edits
System plan goals	Based on Comprehensive Plan Updated equity and accessibility language
Department philosophy	How potential actions are viewed and evaluated Updated equity language
Decision and design factors	Tools to achieve the system goals Minimal edits
Natural resources and conservation policy	Environmental Stewardship Plan narrative added

Planning for the Future

- **Public participation - summary added**
- **Population and growth trends - updated**
- **Level of Service**
 - **Individual participation – updated with survey data and analysis**
 - **Public satisfaction – updated with survey data and analysis**
 - **Walkable access service area – access data updated (survey and mapping); neighborhood gaps descriptions updated**



Capital Project Objectives

- **Open Space, Greenways, Wildlife Corridors, & Trails**
- **Park Facilities**
- **Active Recreation Facilities**
- **Urban Park Systems**
- **Waterfront Access**
- **Partnership Opportunities**
- **Historic, Cultural, & Art Resources**



Open Space, Greenways, Wildlife Corridors and Trails

Opportunity:	Acquire	Develop	Enhance / Preserve	Recommendation	Notes
Greenway Connections/Extensions Mountains to Sound Greenway Trails Lake to Lake Greenway Trails South Bellevue / Coal Creek Greenway Trails Marymoor to Cougar Mountain Greenway Trails Bel-Red Greenway Trails Richards Valley Greenway Trails Eastside Rail Corridor (ERC) Greenway Trails Eastrail corridor	•	•	•	Continue forward	Near-term activity focused on Mountains-to-Sound, Lake-to-Lake, BelRed, and Eastrail. Updated narrative regarding greenway status.
Trail Connections/Extensions: Enhance connectivity and walkability by creating connections and improving wayfinding between neighborhoods and local parks	•	•		Continue forward	Enhanced existing narrative
Incorporate underused spaces, such as street ends, as opportunities to add to or connect open spaces and park facilities		•	•	Add	Included additional language

Open Space, Greenways, Wildlife Corridors and Trails

Opportunity:	Acquire	Develop	Enhance / Preserve	Recommendation	Notes
Native Growth Protection Areas (NGPA) Stewardship	•			Remove	No longer proactively pursuing transfers of private NGPA's to public ownership. Retained most narrative.
<u>Open space acquisition to conserve natural resources and/or expand or connect existing open space, such as Coal Creek</u>	•			Add	Enhanced existing narrative
<u>Open space stewardship that protects tree canopy and emphasizes sustainable land management, including restoration, as funding and opportunities allow.</u>			•	Add	Enhanced existing narrative
<u>Pedestrian and Bicycle Implementation Initiative related to trail and park connectivity, including</u> Pedestrian and Bicycle Transportation Plan Implementation	•	•	•	Continue forward with edits	

Park Facilities

Opportunity:	Acquire	Develop	Enhance / Preserve	Recommendation	Notes
Add neighborhood parks in underserved subareas: BelRed (see Urban Park Systems) Crossroads Downtown (see Urban Park Systems) Eastgate Factoria Newport Wilburton	•	•		Continue forward	Near term focus in BelRed, Downtown and Eastgate/Factoria.
Develop existing undeveloped properties including, but not limited to: Bridle Trails BelRed (West Trib Property) Downtown (Ashwood Park; NE 2 nd PI Properties) Newport (new Newport Hills neighborhood park) Northwest Bellevue (Chapin Property) Wilburton (Highland-Glendale Property)		•		Continue forward with edits	Near term focus Existing Newport Hills property development in process Updated narrative to reflect current status

Park Facilities

Opportunity:	Acquire	Develop	Enhance / Preserve	Recommendation	Notes
Add to or e Continue phased development of existing community parks, including but not limited to: Bellevue Airfield Park Bellevue Botanical Garden Crossroads Park Eastgate Park/South Bellevue Community Center Kelsey Creek Park Lewis Creek Park Mercer Slough Nature Park Robinswood Park Surrey Downs Park Wilburton Hill Park	•	•	•	Continue forward with edits	Planned acquisition and development of Lewis Creek and Surrey Downs are complete.
Pursue acquisitions to expand community parks or natural areas as opportunities arise	•			Add	

Active Recreation Facilities

Opportunity:	Acquire	Develop	Enhance / Preserve	Recommendation	Notes
North Bellevue Community Center Addition		•	•	Continue forward with edits	Community interest in outdoor amenities
Facilities providing recreation and interaction for diverse cultures, ages and abilities		•	•	Continue forward	
Community center serving Northwest, Downtown and West Bellevue neighborhood areas		•		Continue forward	Updated narrative to reflect current status
Sportfields Synthetic field surfaces Two lighted ballfields at Marymoor Park Lighted sportfields at Bellevue Airfield Park Lighted fields at selected community and school sites Improve school sportfields Ballfield at Wilburton Hill Park Cricket grounds		•	•	Continue forward with edits	Enhanced existing narrative re cricket Added narrative re emerging sports, shared uses, and considerations for park facilities in the future
Sport Courts Pickleball facilities		•	•	Add	Added narrative.

Active Recreation Facilities

Opportunity:	Acquire	Develop	Enhance / Preserve	Recommendation	Notes
Off-leash dog areas re Expand Robinswood Park facilities Complete Newport Hills park facility and a Add geographically dispersed additional sites across the city in the northern portion of city		•	•	Continue forward with edits	Near-term focus. Enhanced existing narrative Newport Hills opening 2022
Enterprise Fund facility improvements Golf courses Robinswood Tennis Center Bellevue Aquatic Center Large group picnic areas with shelters and facilities			•	Continue forward	Reference is to existing aquatic center
New aquatic facility		•		Add	Near-term focus. Added narrative

Urban Parks Systems

Opportunity:	Acquire	Develop	Enhance / Preserve	Recommendation	Notes
Downtown NW & SE quadrant neighborhood parks Downtown Park Ashwood Park NW quadrant neighborhood parks SE quadrant neighborhood parks (NE 2nd Place Properties) Main Street linear buffer greenway Urban Trail System Grand Connection Community center serving Downtown	•	•	•	Continue forward with edits	Updated narrative

Urban Parks Systems

Opportunity:	Acquire	Develop	Enhance / Preserve	Recommendation	Notes
Bel-Red Open space and off-street trail development Multi-purpose trail development Park acquisition and development (West Trib Property)	•	•		Continue forward with edits	Near term focus
Eastgate I-90 Corridor Open space and off-street trail development Multi-purpose trail development Park acquisition and development	•	•	•	Continue forward	Neighborhood parks acquisition and connections to parks is near term focus.. Enhanced narrative
Wilburton Multi-purpose connections to Eastrail corridor Eastrail corridor development Grand Connection Park acquisition and development (Highland-Glendale) Open space and natural systems enhancement	•	•	•	Add	Added narrative Trail connections and initial Eastrail development is near term in partnership with King Co.

Waterfront Access

Opportunity:	Acquire	Develop	Enhance / Preserve	Recommendation	Notes
Meydenbauer Bay Park		•		Continue forward	Phase 2 development near term focus
Meydenbauer Bay Park to Downtown Park connection	•	•		Continue forward	
Connect Enatai Beach Park to Mercer Slough Nature Park	•			Remove	Removed narrative
Complete phased development of Enatai Beach Park		•		Continue forward	
SE 40th Boat Launch addition	•	•	•	Continue forward with edits	
Sweyolocken Boat Launch redevelopment		•	•	Continue forward with edits	
Lake Sammamish waterfront	•	•		Continue forward	Enhanced existing narrative re acquisitions

Waterfront Access

Opportunity:	Acquire	Develop	Enhance / Preserve	Recommendation	Notes
Chism Beach redevelopment			•	Continue forward	Shoreline restoration needs
Clyde Beach redevelopment			•	Continue forward	Shoreline restoration needs
Additions to existing waterfront parks	•			Continue forward	
Additional established locations for non-motorized boat launch, such as street ends	•	•		Add	
Lake Bellevue access	•	•		Add	Added narrative

Partnership Opportunities

Opportunity:	Acquire	Develop	Enhance / Preserve	Recommendation	Notes
Elementary, middle and high school recreation site improvements			●	Remove	Partnership better reflected in line 3
Partner with other City departments to create parks	●	●	●	Continue forward with edits	
Partner with other public agencies to create, fund, or manage parks and trails , including but not limited to adjacent cities, Tribes, Bellevue School District, Cascade Water Alliance, Sound Transit, Seattle Public Utilities, Washington State, King County and Bellevue College	●	●	●	Continue forward with edits	Enhanced existing narrative
Partner with community-based organizations to create parks where advantageous to achieve capital project goals, such as the new aquatic facility	●	●	●	Continue forward with edits	Enhanced existing narrative
Aquatic facility	●	●		Moved	Included in the line above

Partnership Opportunities

Opportunity:	Acquire	Develop	Enhance / Preserve	Recommendation	Notes
Partner with non-profit conservation organizations to advance open space protection and restoration opportunities	•			Add	Added narrative
Historic building preservation			•	Continue forward	
Cross-Cultural facility	•	•		Continue forward	Enhanced existing narrative

Historic, Cultural, and Art Resources

- **Capital Project Objectives built into other focus areas, namely partnerships.**
- **Parks & Community Services stewards many historical and cultural properties, included in**
- **Historic and cultural resources – updated and added narrative, namely related to Eastrail**
- **Visual and performing arts – updated narrative**

Prioritization Criteria

Recommended projects are to be implemented according the following criteria:

1. Parks System Plan consistency
2. City Council priorities
3. Maintenance and operations impacts
4. Citizen input
5. Geographic distribution
6. Multiple benefits (user groups and/or plans)
7. Special funding availability
8. Affordability
9. Neighborhood impacts
10. Site suitability
11. Economic impact
12. Urgency

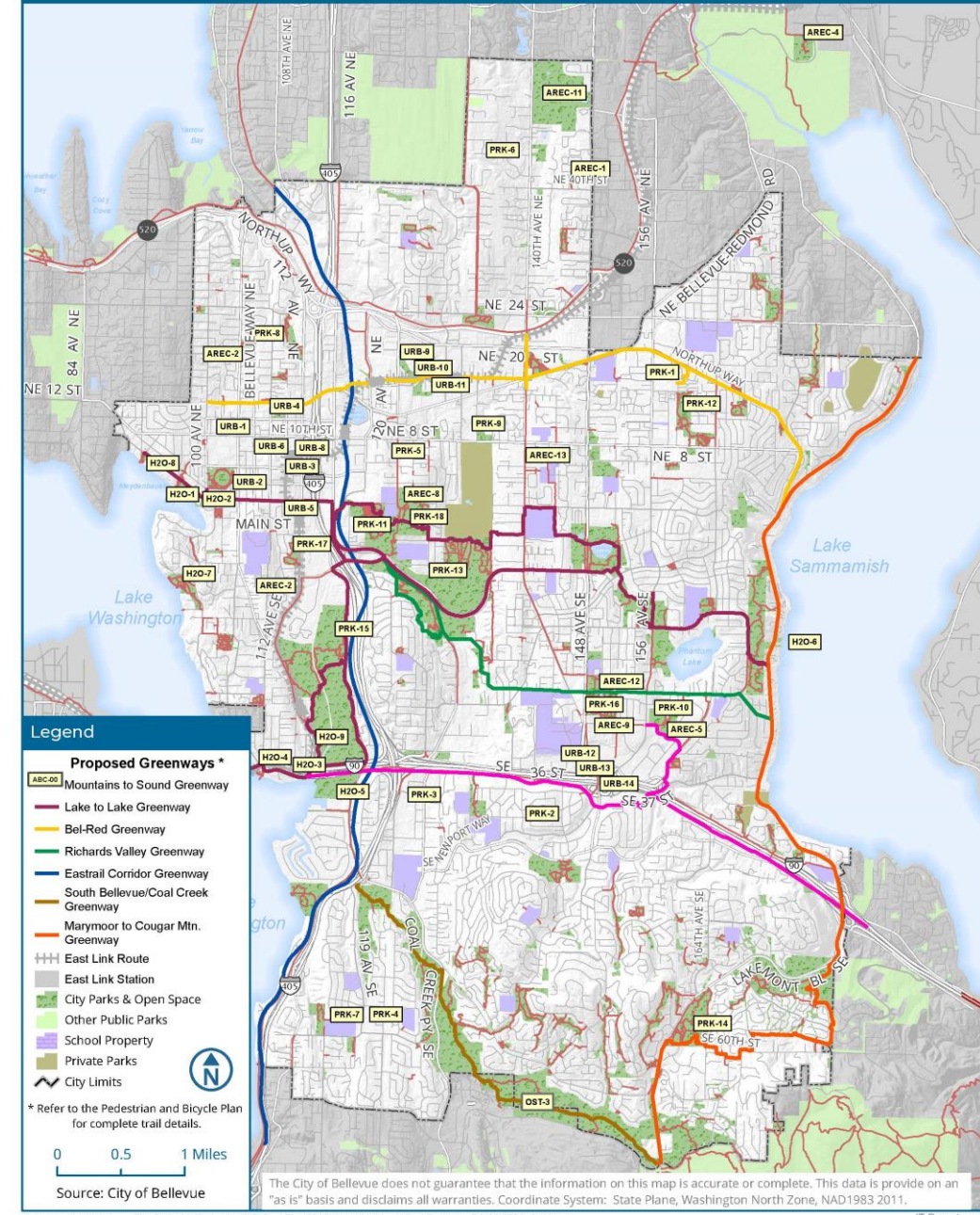
Maintenance, Renovation, & Security

- **Management and maintenance – describes goals and resources**
- **Renovation Plan – updated language to reflect latest plan**
- **Safety & security related to the parks system**
- **Department role in City emergency preparedness**

Financing

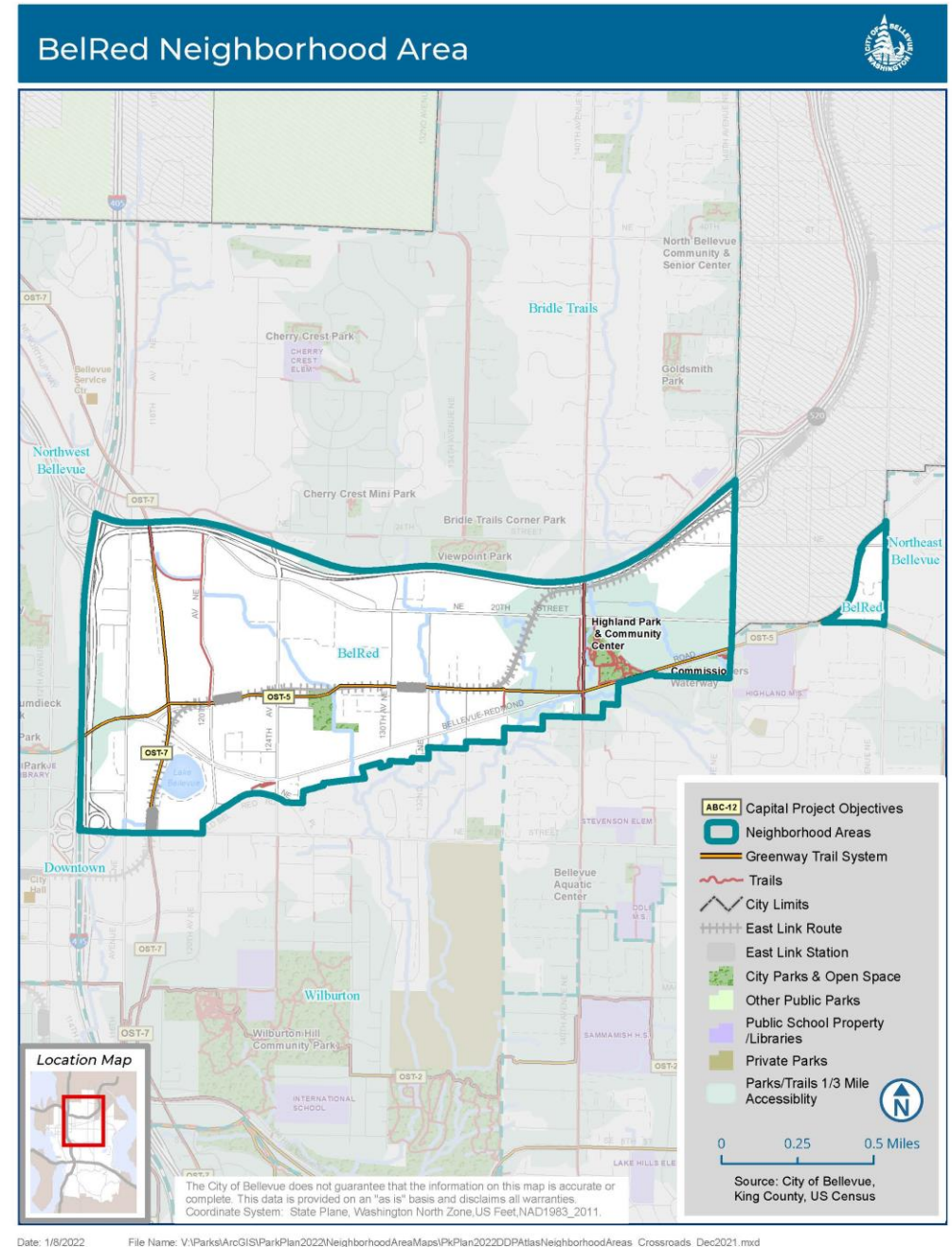
- Funding strategy – proposed to implement this plan
- Summary of funding sources – toolbox of options
 - Updated narrative to reflect status of current sources, such as levy and grants
- Levy funds remain for:
 - Park & Open Space Acquisition (Levy, REET)
 - Bellevue Airfield Park Development

Capital Project Objectives



Conclusion & Appendices

- Likely to edit the conclusion before adoption
- Appendices to be added:
 - Inventory and mapping
 - Capital Investment Program 2021-27
 - Bridle Trails/140th Street Park Development
 - Bel-Red Parks & Streams
 - Meydenbauer Bay Park Phase 2
 - Parks O & M facility



Board Discussion



Next steps

- **Staff will further refine text**
- **Post for public review**
- **Recommend plan forward at February Board meeting**
- **Formatting of draft plan**
- **Council will review in spring**



Thank you!

