

I-405, Renton to Bellevue Widening and Express Toll Lanes Project

Bellevue City Council

Jan. 18, 2022

Master Plan vision for a 50-mile ETL & BRT System

Park and Ride expansions



Transit center expansions



Bus Rapid Transit stations



Local arterial improvements



Additional lane capacity



Transit service increase



Direct Access and Direct Connectors



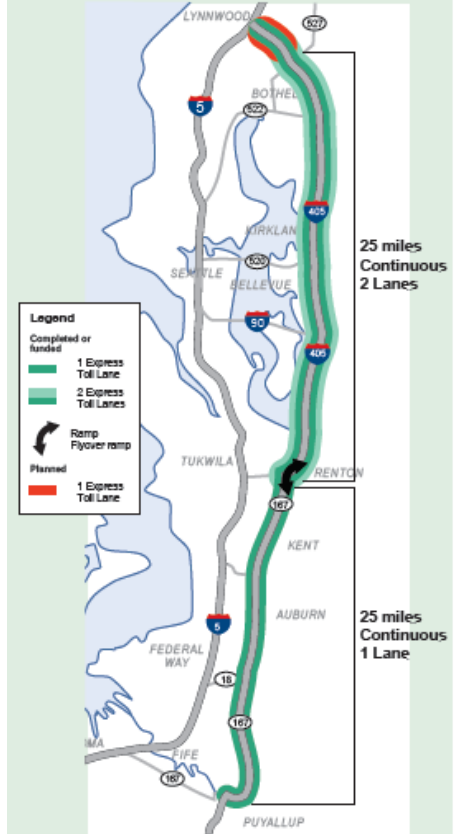
Vanpool service increase



Pedestrian/bicycle improvements



50-mile Express Toll Lane System
95% complete or funded



Agenda

Welcome and introductions

Project overview

Progress and early milestones

- King County Eastrail
- Mountains to Sound Greenway Trail
- Northeast 44th Street interchange

Upcoming Main Street bridge replacement

- I-405 full weekend closure
 - Detour
 - Anticipated impacts
- Main Street bridge long-term closure
 - Detour
 - Anticipated impacts
- Bridge replacement schedule
- Outreach and coordination

Potential demo viewing opportunity

Questions

Project update

Rob Woeck, I-405/SR 167 Deputy Program Administrator

Gil McNabb, I-405/SR 167 Engineering Manager

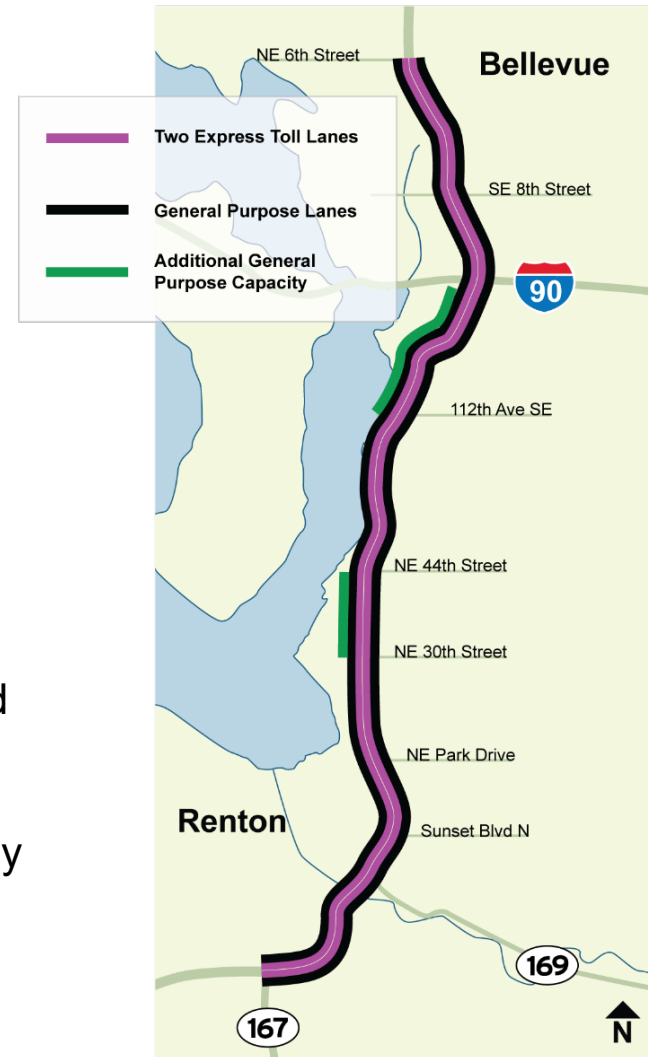
Ken Horton, Construction Manager, Flatiron-Lane JV

Craig Smiley, I-405/SR 167 Program Public Information

Project overview

Major multimodal project elements:

- New capacity and interchange improvements
- Dual express toll lane system
- Direct access ramps
 - Northeast 44th Street in Renton
 - 112th Avenue Southeast
- Main Street Bridge replacement
- Bus Rapid Transit infrastructure (with Sound Transit)
- Additional general-purpose capacity southbound auxiliary lanes
- Eastrail segments (with King County)
- Coordination with Mountains to Sound Greenway trail



Progress and early milestones: King County Eastrail south segment

On Wednesday, Nov. 10, crews opened the full 2.5-miles of the new King County Eastrail regional trail between Renton and Bellevue.

- King County hosted a trail opening event with partners WSDOT, the City of Renton, and the City of Bellevue.



Progress and early milestones: King County Eastrail pedestrian bridge

Work progressing on the Eastrail pedestrian bridge over southbound I-405 near the Mercer Slough



Progress and early milestones: Northeast 44th Street interchange in Renton

Early work has been focused on the Northeast 44th Street interchange:

- Relocating the Northeast 44th Street on-ramp to northbound I-405.
- Northbound I-405 May Creek bridge widening.



Bellevue Main Street bridge replacement

Closure of the Main Street bridge:

- Main Street bridge replacement to accommodate widening mainline I-405
- Work anticipated to begin March 2022
- Complete work August 2022
- Full weekend closure of I-405 for Main Street bridge demolition
- **150-day** closure of Main Street bridge
- **60-day** single lane traffic following full bridge closure



I-405 full weekend closure

I-405 detour routes:

- Northbound detoured at Southeast Eighth Street onto 116th Ave. NE
- Southbound I-405 detoured at Northeast Fourth Street onto 112th Ave NE

Anticipated impacts:

- Heavier than usual traffic along detour routes (112th Ave. NE and 116th Ave. NE) and adjacent Bellevue surface streets.
- Construction related noise from Main Street bridge demolition.



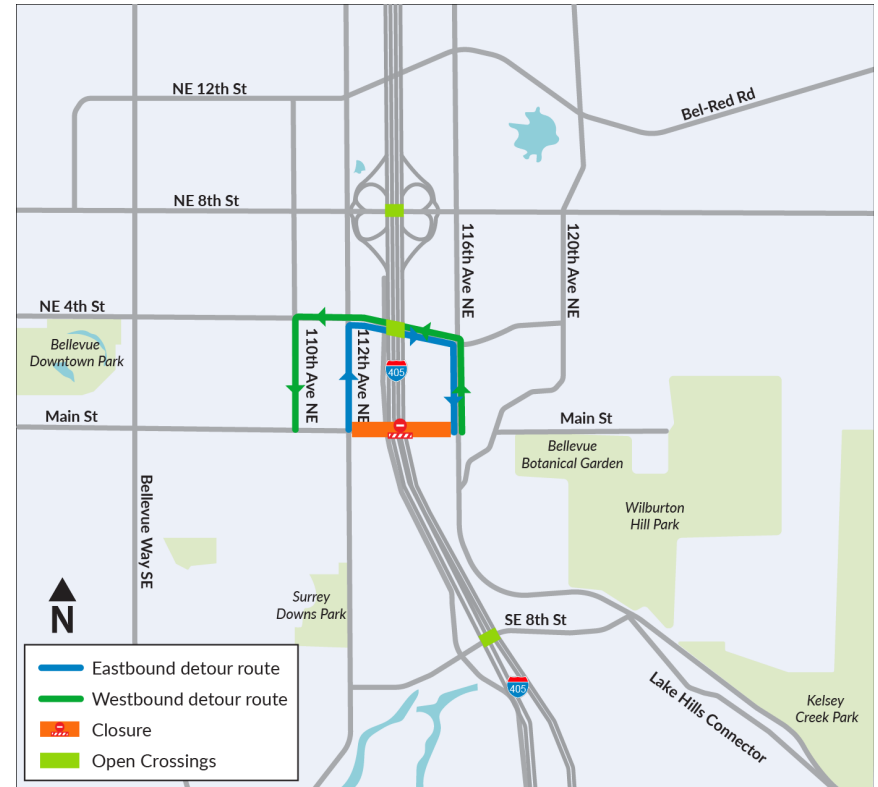
Main Street bridge long-term closure

Main Street bridge detour routes:

- Main Street bridge traffic detoured to Northeast Fourth Street

Anticipated impacts:

- Slightly heavier traffic on east/west connecting streets, Southeast Eighth Street, Northeast Fourth Street, and Northeast Eighth Street



Schedule: Main Street bridge replacement

One week in advance – Portable message signs placed per traffic control plans.

Tuesday – Close Main Street between 112th Ave NE and 116th Ave NE; close 114th Ave SE for 200 feet on either side of bridge; post detour signs per traffic control plans.

Friday:

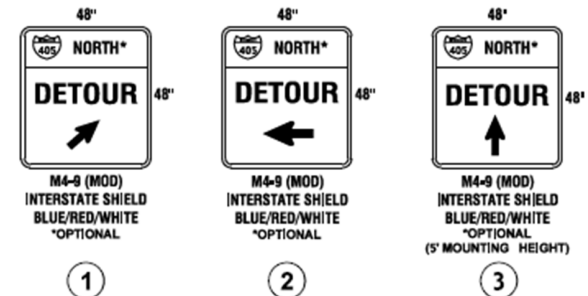
- **9 p.m. to 11 p.m.** – Close on-ramps and off-ramps, 114th Ave SE, and post detour signs for I-405 closure.
- **Midnight** – Close mainline I-405 between Southeast Eighth Street and Northeast Fourth Street.

Saturday – Demolition begins on east side of Main Street bridge. Crews demolish bridge, process debris on-site and haul away, working east to west.

Sunday – Demolition, processing and hauling continues.

Monday:

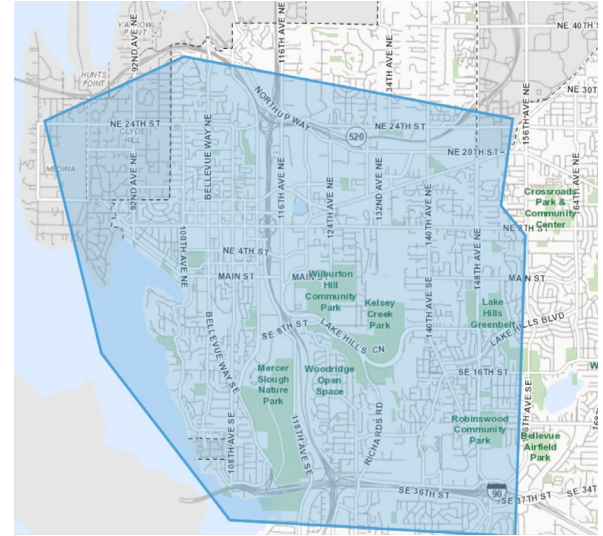
- **4:30 a.m.** – Reopen mainline I-405 both directions.
- **7 a.m.** – Reopen 114th Street Southeast.



Outreach and coordination

Began outreach planning and coordination between WSDOT, Flatiron/Lane Joint Venture and Bellevue staff in December 2021:

- Postcard mailers and translated materials
- WSDOT website updates
- WSDOT news release
- WSDOT blog post and social media push
- Bellevue “It’s Your City” blog post and publication
- Interested parties and listserv email
- Business outreach
- Briefings



Wednesday, February 23, 2022

I-405 weekend closure in Bellevue to remove Main Street bridge



Questions?

Contact

Rob Woeck

I-405/SR 167 Deputy Program Administrator

WorckRo@wsdot.wa.gov

Gil McNabb

I-405/SR 167 Engineering Manager

McNabbG@wsdot.wa.gov