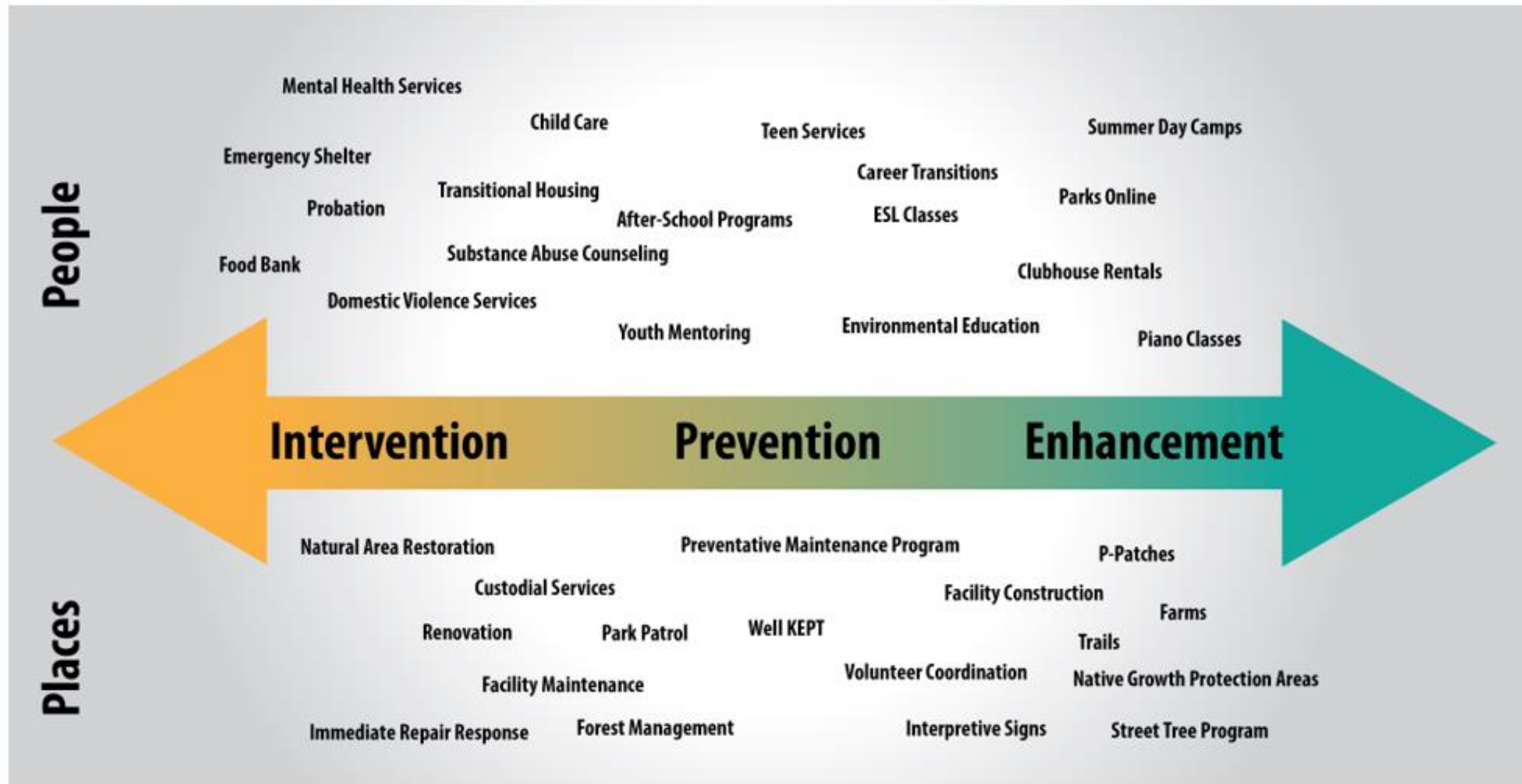


# PROBATION SERVICES


City of Bellevue Parks and Community Services

# Parks & Community Services – Continuum of Services



# WHAT IS PROBATION?

## Community Corrections

- Probation
  - Parole (in Washington State this is known as Community Custody)
  - Home Confinement or Electronic Home Detention
  - Work Crew
  - Work Release
- 
- Three parallel white lines of varying lengths are positioned diagonally on the right side of the slide, extending from the middle towards the bottom right corner.

# WHO IS ON PROBATION?

- Probationers come from all walks of life.
- People of color are over-represented.
  - **1 in 23** African Americans are on probation vs **1 in 81** of their white counterparts (Pew)
    - They also are subject to higher revocation rates (National Institute of Corrections).
- As are those who live in the poorest communities
  - On probation at almost twice that of their wealthy counterparts (PrisonPolicy.org)
- Nationally, approximately 40% of probationers have a substance use disorder. Of those, 37% also has a co-occurring mental illness. (Health and Justice Journal)

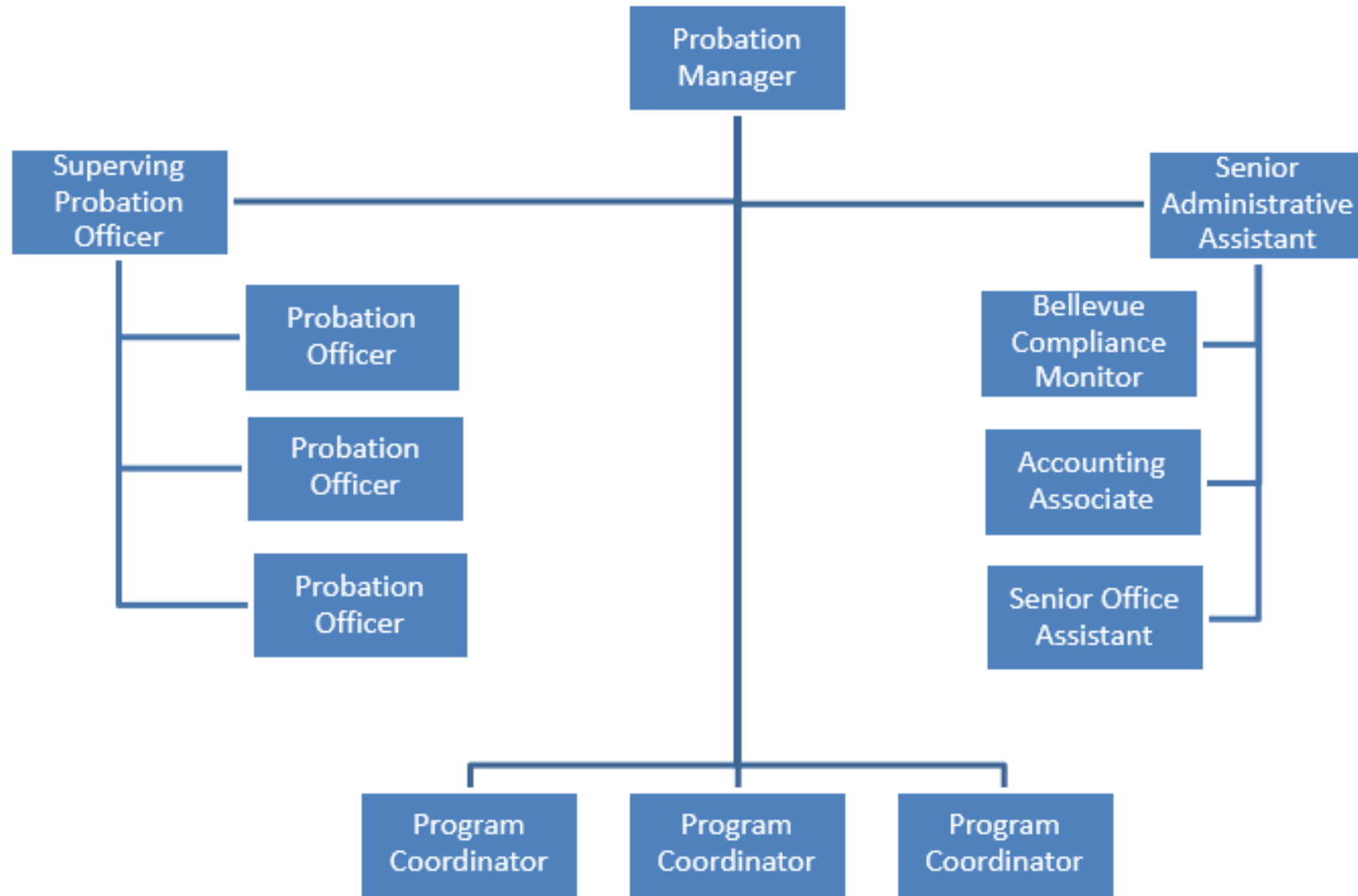
# Common Barriers or Needs

- **Housing**
  - **Disability**
  - **Economic**
  - **Language Access**
  - **Transportation**
  - **Employment/Education**
- 
- Several white lines of varying lengths and orientations are positioned in the bottom right corner of the slide, creating a modern, abstract graphic element.

# KING COUNTY DISTRICT COURT

## Partnership with King County District Court (KCDC)

- Bellevue does not operate own court
  - Interlocal Agreement (ILA) for Provision of District Court Services
  - Memorandum of Understanding (MOU)
- All work and case files are generated from KCDC
  - Active Probation
  - Compliance Monitoring
  - Direct Service Programs
  - Altogether, the City of Bellevue serves over 1000 clients annually.




# WHAT DO PROBATION OFFICERS DO?

- **Evaluate**
  - **Refer**
  - **Collaborate**
  - **Monitor**
  - **Investigate**
  - **Report**
- 
- A series of three parallel white diagonal lines extending from the bottom right towards the top right of the slide.



# COB PROBATION PROGRAMS

- **DV MRT (Moral Reconation Therapy)**
  - **Alive at 25**
  - **Defensive Driving (DDC 10)**
  - **License Support Program**
  - **Consumer Awareness Program**
- 
- Several white lines of varying lengths and slopes are positioned in the bottom right corner of the slide, creating a modern, abstract graphic element.

# BELLEVUE WORK CREW

**Bellevue Work Crew is a city run work program that serves several purposes such as:**

- **An alternative to confinement**
- **A means to receive credit for outstanding fees**
- **A work site option for community service at judge's discretion**

**All current work sites are located at City park locations**

# ELECTRONIC HOME DETENTION (EHD)

## **Pre-Adjudication Functions:**

- **24/7 Sobriety Program**
  - **Transdermal Alcohol Detection Device (TAD)**
  - **Soberlink**

**Also serves as an alternative to confinement**

- **EHD**

**Each program charges a daily fee**

- **To ensure access to all, fees are assessed on a sliding scale**

# ADVANCING EQUITY

## **Diverse Staff**

## **Staff Training**

- **Courageous Conversations**
- **Trauma Informed Care**
- **Suicide Prevention**
- **Harm Reduction and Medication Assisted Therapy**
- **Motivational Interviewing**

## **Sliding Scale and Reduced Fees**

## **Data Sets to Measure Outcomes**

## **Exit Surveys**

## **Evening and Day Classes (Spanish Available)**

- **Interpreters are provided for all other languages across all programs**

## **Free Bus Tickets**

		2018	2019	2020	2021	Target
100.0008	Jail cost savings from EHD	\$449,730	\$715,072	\$701,243	\$602,254	> \$400000
100.0009	% of EHD cases closed in comp	91.93%	90.62%	83.56%	89.74%	> 90%
100.0015	% of closed Prob cases reoffending in 3 yr	38.24%	25.80%	32.85%	17.95%	< 40%
100.0016	% of closed Prob cases reoffending in COB in 3 yr	10.78%	7.50%	6.24%	5.23%	< 15%
120.0120	Offenders completing PTD (SOC) in comp	91.86%	88.92%	85.59%	86.96%	> 75%
120.0130	Offenders completing DV prob in comp	81.61%	76.83%	69.27%	70.59%	> 65%

# COVID-19

## Unprecedented Impacts of a Pandemic

- Nationwide numbers decreased
  - Bellevue was also affected
- Customer service focused profession
- Programs suspended and reinstated
- Staffing challenges
  - Finding balance and preparing for illness

## What did we learn?

- Parks & Community Services response
- Importance of vigilance
- Pandemic related changes required careful navigation
- Progress can continue
- Embracing the digital frontier

# Questions?

