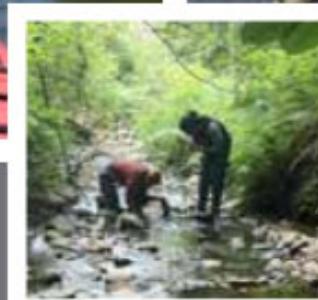




# Comprehensive Plan Periodic Update

Kate Nesse  
*Community Development*

March 10, 2022

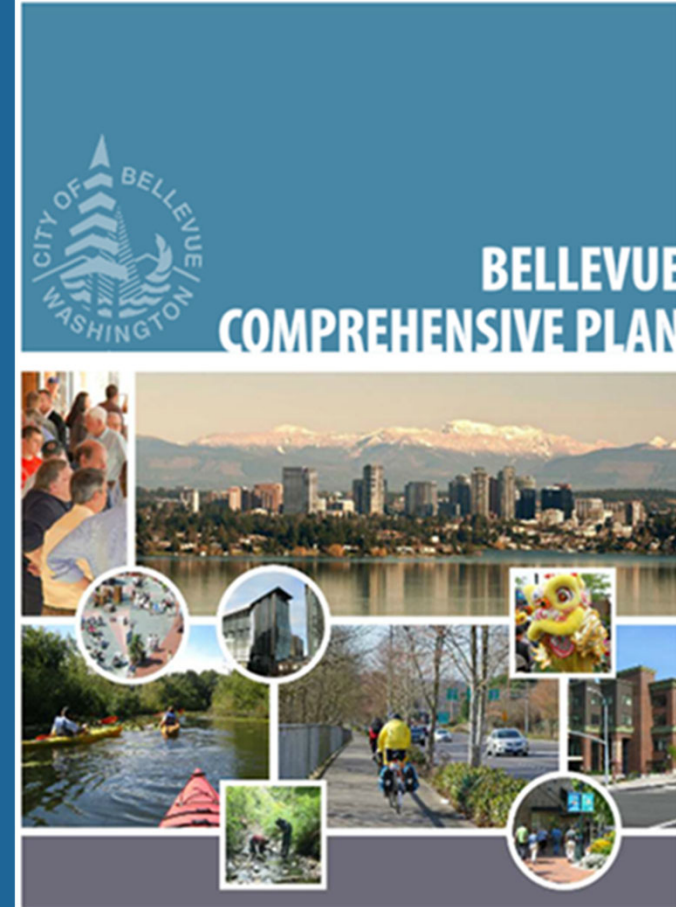




# Information

On February 28, Council

- 1) Initiated the Comprehensive Plan Periodic Update
- 2) Directed boards and commissions to contribute to the update

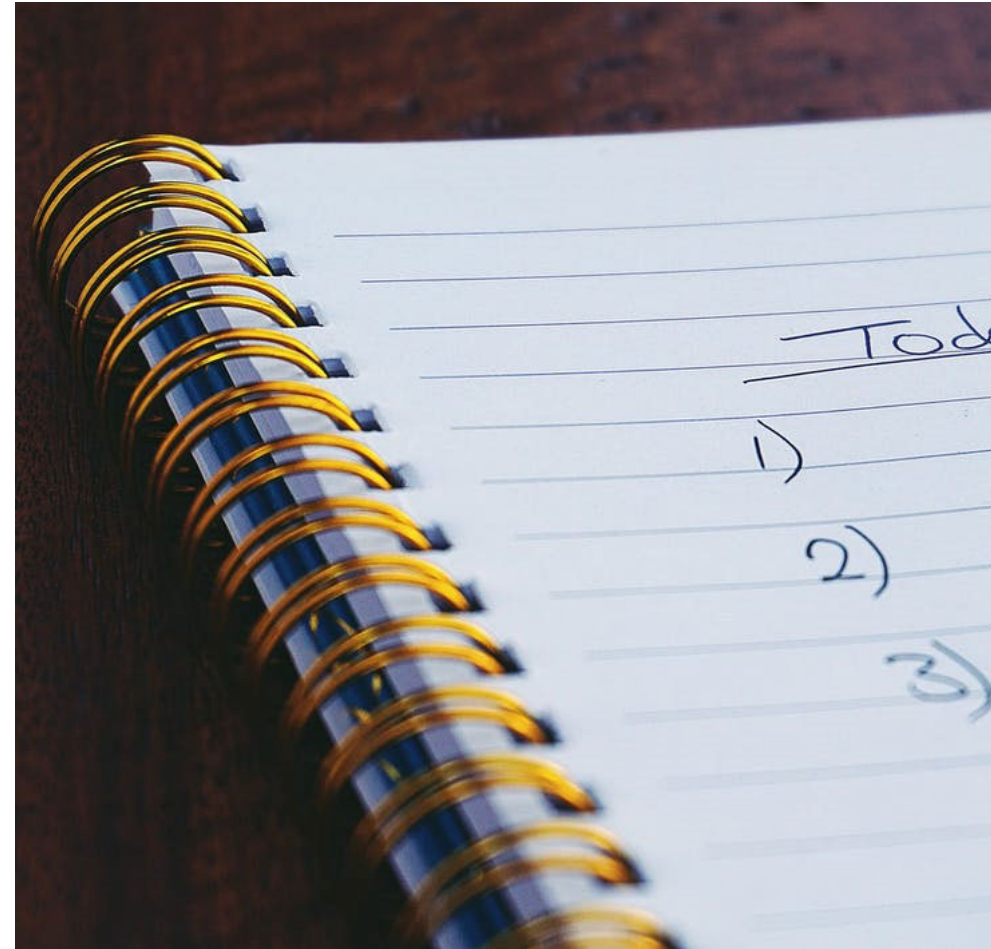




# Agenda

---

1. Background
2. Current Plan
3. Reasons for the Update
4. Emphasis areas and scope
5. Update Process
6. Community Engagement Strategy
7. Next Steps

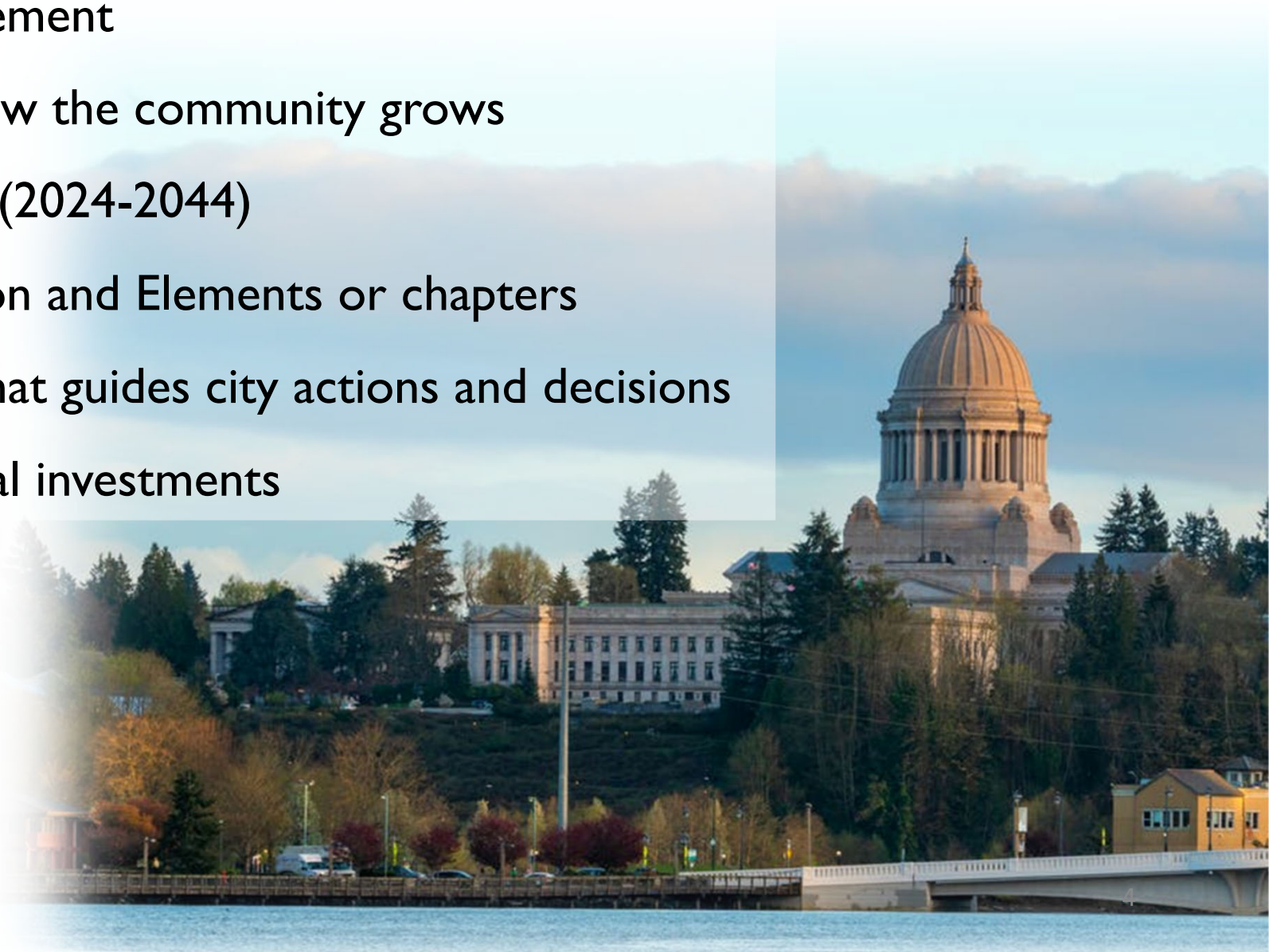




# What is a Comprehensive Plan

---

- GMA requirement
- Vision for how the community grows
- 20 year plan (2024-2044)
- Includes Vision and Elements or chapters
- Sets policy that guides city actions and decisions
- Guides capital investments



# What is our current plan?

- Vision
- Narrative
- Goals + supporting Policies
- Map of land uses
- Subarea/Neighborhood Area plans



TABLE OF CONTENTS	
INTRODUCTION & VISION	1
CITIZEN ENGAGEMENT	23
LAND USE	33
NEIGHBORHOODS	61
HOUSING	77
CAPITAL FACILITIES	99
UTILITIES	121
TRANSPORTATION	159
ECONOMIC DEVELOPMENT	207
ENVIRONMENT	231
HUMAN SERVICES	273
PARKS, RECREATION & OPEN SPACE	287
URBAN DESIGN & THE ARTS	305
SHORELINE MANAGEMENT	329
GLOSSARY	G-1

CITY OF BELLEVUE COMPREHENSIVE PLAN: TABLE OF CONTENTS



# VISION 2050

A Plan for the Central Puget Sound Region



Puget Sound Regional Council



## Why update now?

- Remain current and relevant
- Address regional requirements
  - GMA requirements – 8 year periodic update (2024)
  - PSRC Vision 2050 MPP's
  - King County CPPs and growth targets
- Reflect Council's updated vision
  - Housing options and affordability
  - Maintain economic innovation
  - Protecting the environment



# Growth Targets: Background

Growth targets are:

- A policy statement about the amount of housing and jobs we plan for in 2024 comprehensive plans
- For at least a 20-year period (2019-2044)
- Created collaboratively by all cities and King County
- Adopted as part of the CPPs



# Adopted Growth Targets:

- Metropolitan job center and regional collaboration
- Downtown Bellevue is an Urban Growth Center
- Achieving a more equitable jobs/housing balance – 2:1 from 2.4:1
- Planning to address growth: Periodic update, other initiatives

	Housing Units	Jobs
Existing Inventory	65,194	155,031
	<b>Net New Housing Units 2019-2044</b>	<b>Net New Jobs 2019-2044</b>
Target	35,000	70,000
Existing Capacity	26,859	117,241



# Focus of the Update



- Plan for growth: Land Use Map amendments + broader categories, and Countywide and Regional Centers
- Expand housing options, access to affordable housing, and approaches to combat homelessness
- Create vibrant places at a variety of scales and locations
- Equitable approaches with a focus on underserved and underrepresented community members
  - Diverse and inclusive engagement
  - Displacement considerations
  - Legacy of discrimination: education and response
- Emphasize environmental sustainability and resilience
- Set the stage for future planning

# Focus of the Update

---

## Areas of emphasis:

- Update the land use map and/or policy changes to plan for adopted growth targets;
- Amend the housing element to align with CPPs and affordable housing;
- Policies that address the legacy of discrimination;
- Update policies to manage growth in the City's Centers: Countywide and Regional Centers;
- Consistent, equitable outreach and engagement with diverse communities;
- Address climate change requirements
- Broader land use map designations



# Update Process

---

Two year process with an EIS and three phases:

Phase 1: Vision Update and Alignment

Phase 2a: Draft Land Use Alternatives

Phase 2b: Analyze and lay the foundation

Phase 2c: Growth-Related policy updates

Phase 3: Revise and refine

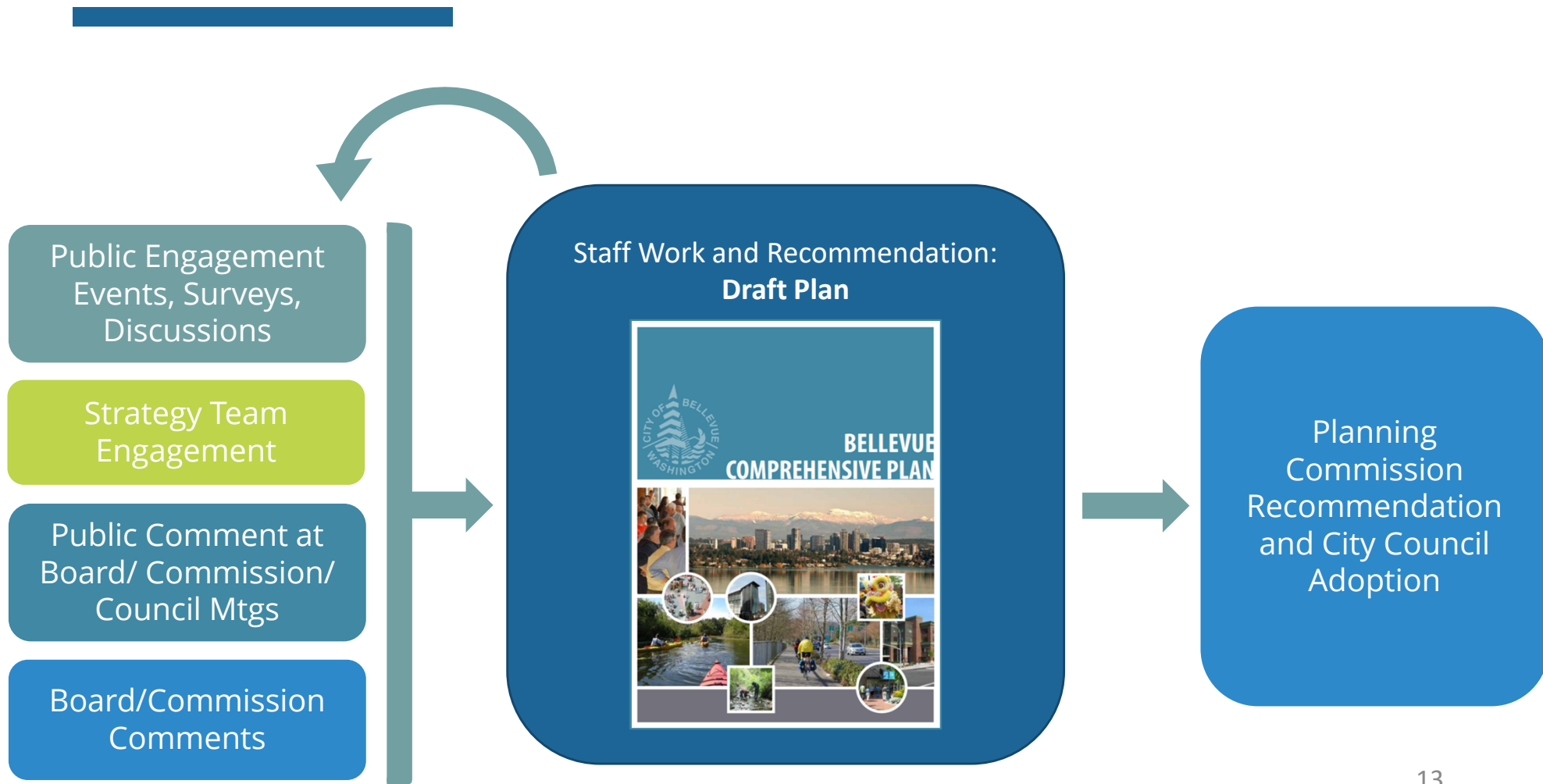


# Community Engagement Strategy



YEAR	TIME	PHASE	FOCUS
2022	Mar-Apr	1	Affirm the Vision
	May-Jul	2a	Explore Livability
	Sep-Nov	2b	Lay the Foundation for Future Planning
2023	Jan-Mar	2c	Explore Growth Alternatives
	Jul-Oct	3	Refine Plan & Policies

# Streams of Engagement



# Types of Outreach Activities

## Direct

- Mailed questionnaire to all households
- Mailed announcements

## On-Demand

- Engaging Bellevue Website  
[www.engagingbellevue.com](http://www.engagingbellevue.com)
  - Ask questions
  - Provide input – surveys, ideas, discussion
  - Download information

## In-Person/Virtual

- Community workshops
- Presentations on request
- Tabling in the community

## Equity

- Cultural Outreach Ambassadors
- Material Translated
- Multi-lingual outreach





# Next Steps

---

Upcoming meetings in 2022

July – (Direction) Draft Land Use alternatives

November – (Direction) Draft transportation element policies



# Information

On February 28, Council

- 1) Initiated the Comprehensive Plan Periodic Update
- 2) Directed boards and commissions to contribute to the update

