



Let's Connect

BELLEVUE PARKS BOARD

January 2023



PARKS

Your Big Backyard



Essential Connector

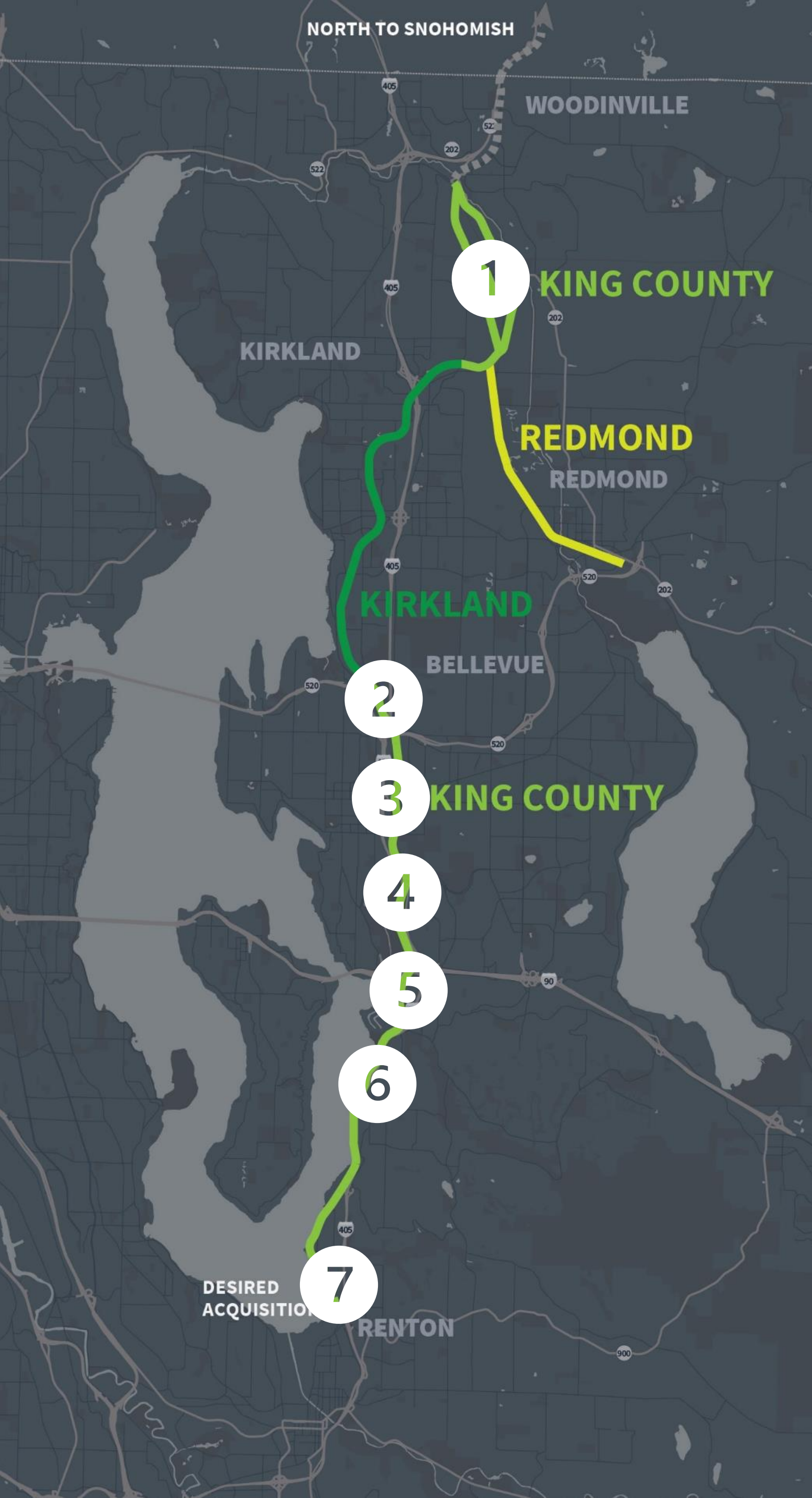
Like 405, the Eastrail is the critical north-south spine

Multi-Modal ●

Sound Transit at 4 light rail stations +

Renton BRT+

RapidRide

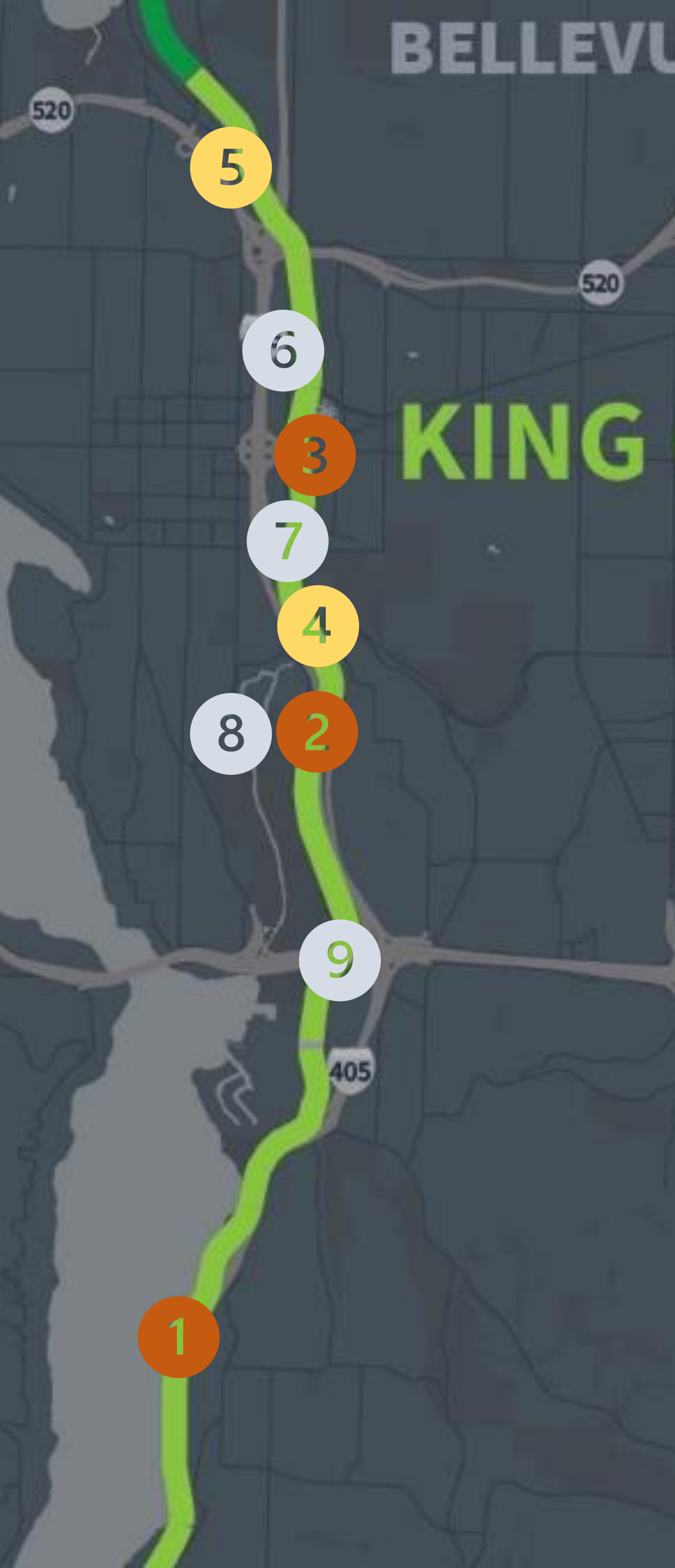


FUNDING & PARTNERSHIPS

\$60M+ Current KC Parks Levy Capital Funding

\$62M in partnerships - building better and faster:

- ① City of Woodinville \$1.5 Million - 145th Crossing
- ② Eastrail Partners \$2 Million – Northup Connector
- ③ Sound Transit \$3 Million- NE 8th Overcrossing
- ④ Kaiser Permanente - \$.5 Million Wilburton Trestle
Washington State - \$2.5+\$6 Million Wilburton Trestle
City of Bellevue - \$2 Million Wilburton Trestle
Amazon - \$7.5 Million Wilburton Trestle & Trail
- ⑤ Washington State - \$12 Million I-90 Steel Bridge
- ⑥ WSDOT - \$19 Million I-405 projects
- ⑦ Washington State - \$6 Million Renton Extension



BELLEVUE PROJECTS

In Construction

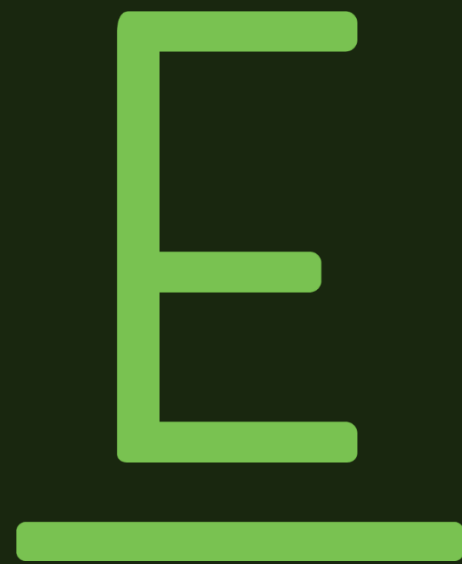
- 1 I-405 Lake Lanes – *Open to the public*
- 2 I-405 Crossing – *Open late 2025*
- 3 NE 8th Overcrossing – *Open late 2023*

In Design-Permitting Phase

- 4 Wilburton Trestle – *Open late 2025*
- 5 Northup/SR 520 Trail Connector – *Open by early 2024*

In Design/Upcoming

- 6 Spring Boulevard Connector – *Fully funded*
- 7 NE4th-SE5th Trail – *Bellevue SS4A grant application*
- 8 Doolittle/Ollis – *Acquisition complete/unfunded*
- 9 I-90 Crossing – *Unfunded*



King County/WSDOT

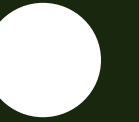
I-405 LAKE LANES

- 2.5 miles of paved trail between Renton and Coal Creek Parkway
- Newcastle Beach Park Connection

FUND



DESIGN



PERMIT



BUILD



PROJECT COST:

\$26 Million

FUNDING SOURCES:

King County \$7 Million

Washington State \$19 Million

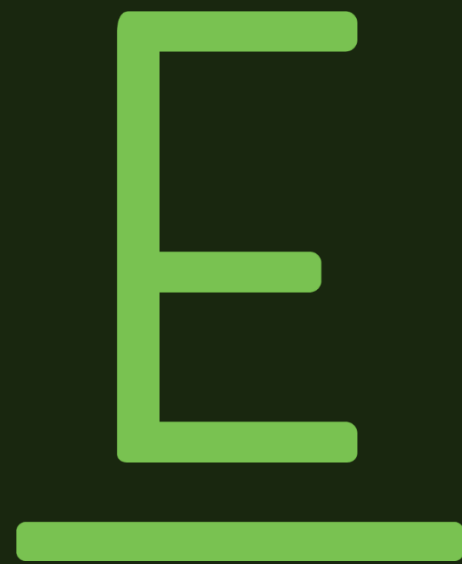
(includes all I-405 partnership segments)

E



E





King County/WSDOT

I-405 CROSSING

- .4 miles of paved trail including a new bridge over I-405 southbound lanes
- Connects to the Wilburton Trestle project
- Future access from 118th and the Ollis Property

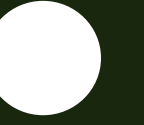
FUND



DESIGN



PERMIT



BUILD



PROJECT COST:

\$26 Million

FUNDING SOURCES:

King County \$7 Million

Washington State \$19 Million

(includes all I-405 partnership segments)

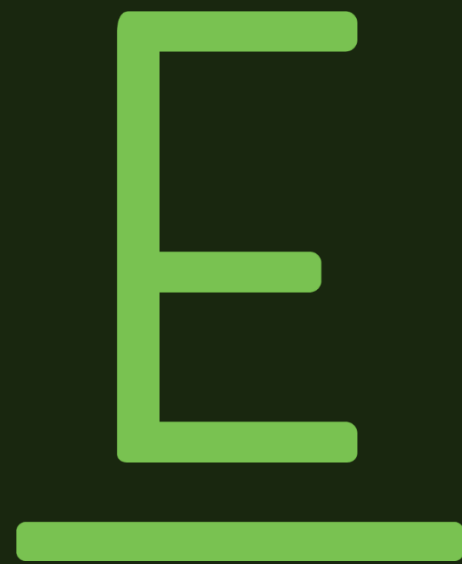
Image copyright vexcel imaging

E



FE





King County

WILBURTON TRESTLE

Iconic landmark and critical connection. 1,000 feet long, 100 feet high, 100 years old. Will be a destination in itself along the Eastrail.

FUND



DESIGN



PERMIT



BUILD



PROJECT COST:

\$32 Million

FUNDING SOURCES:

King County \$18 Million

Washington State \$9 Million

Amazon \$5 Million

City of Bellevue \$2 Million

Kaiser Permanente \$.5 Million

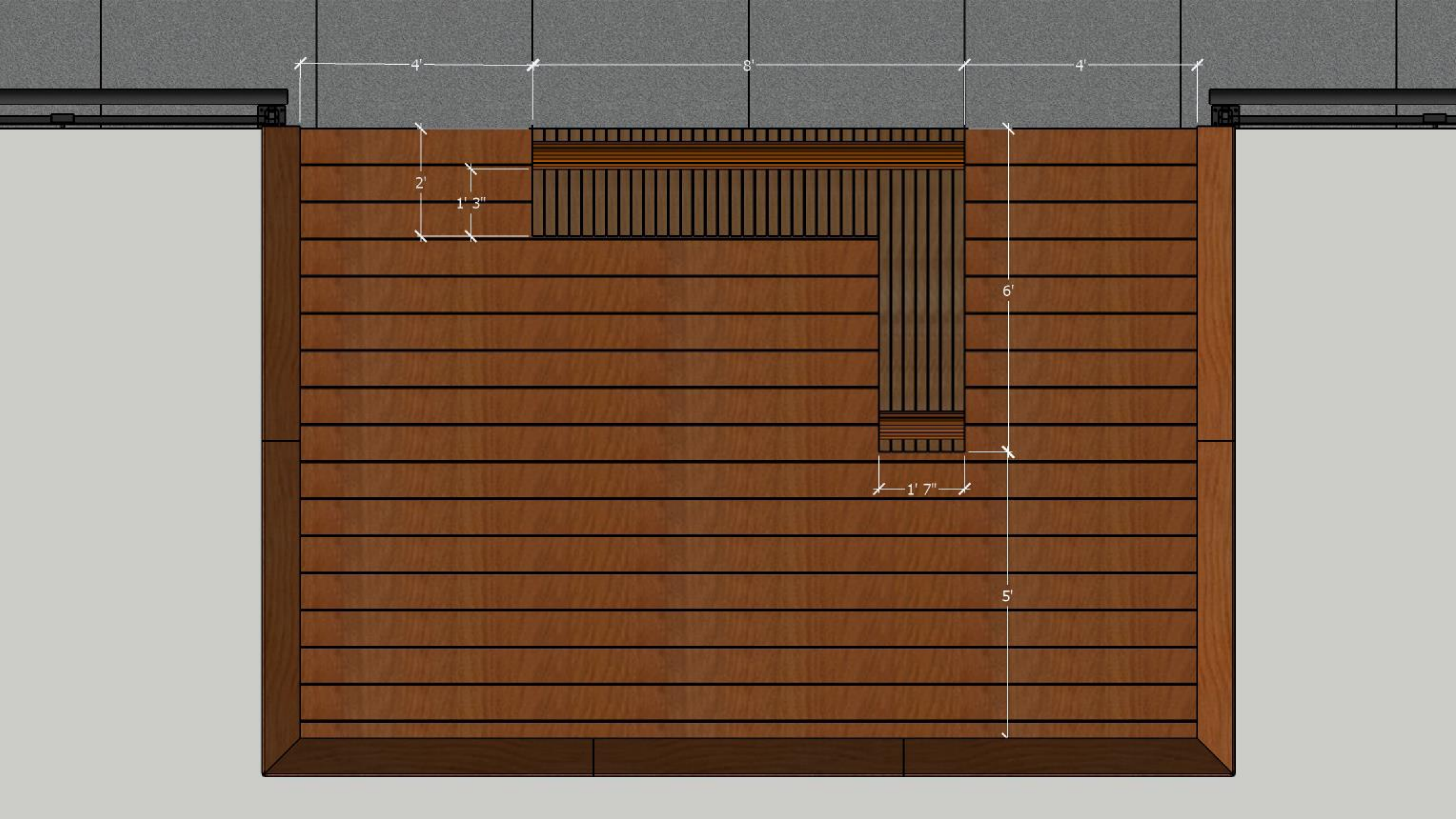
E



Viewpoint Railing 1

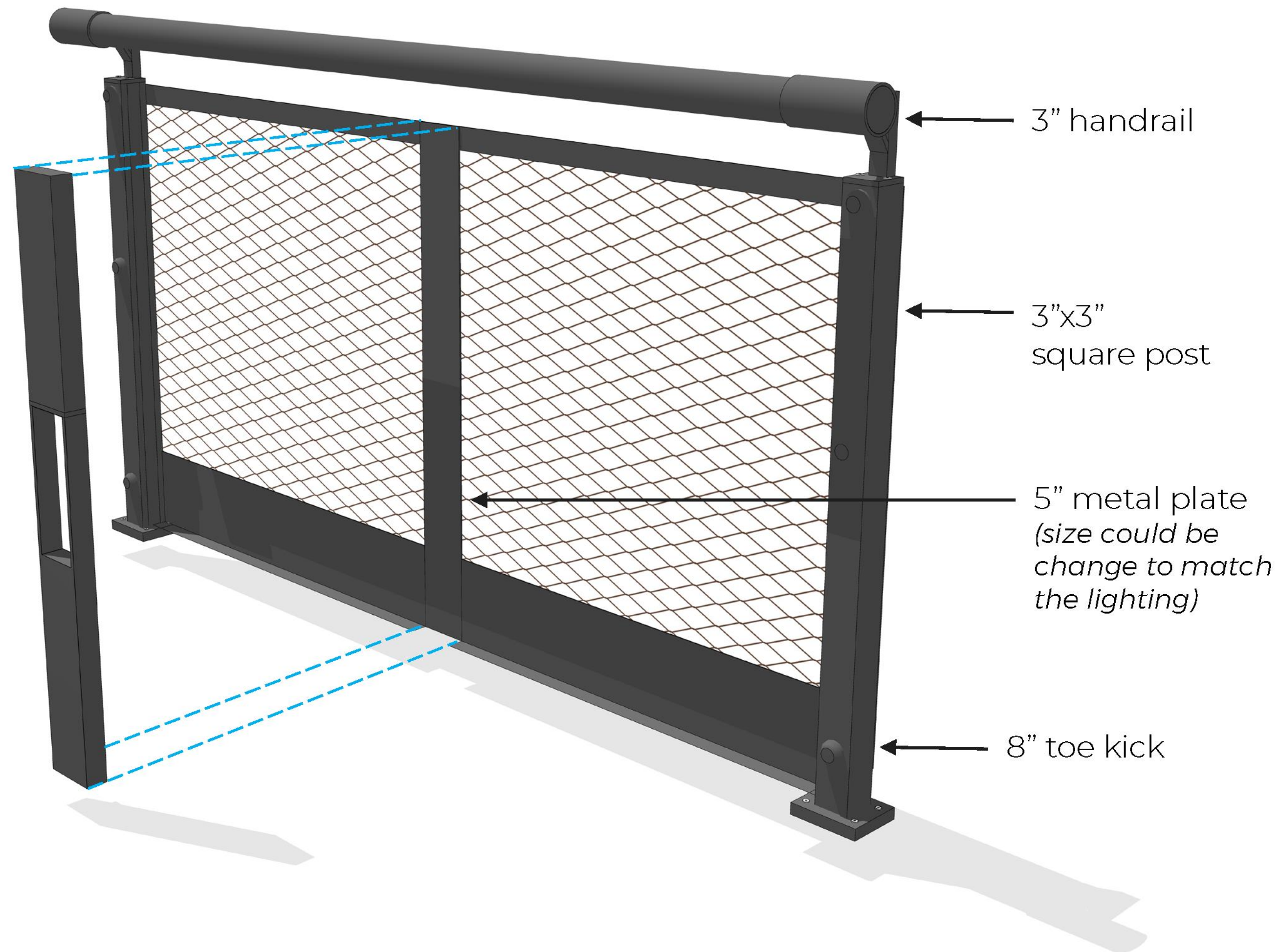
70" SEGMENT (square post)





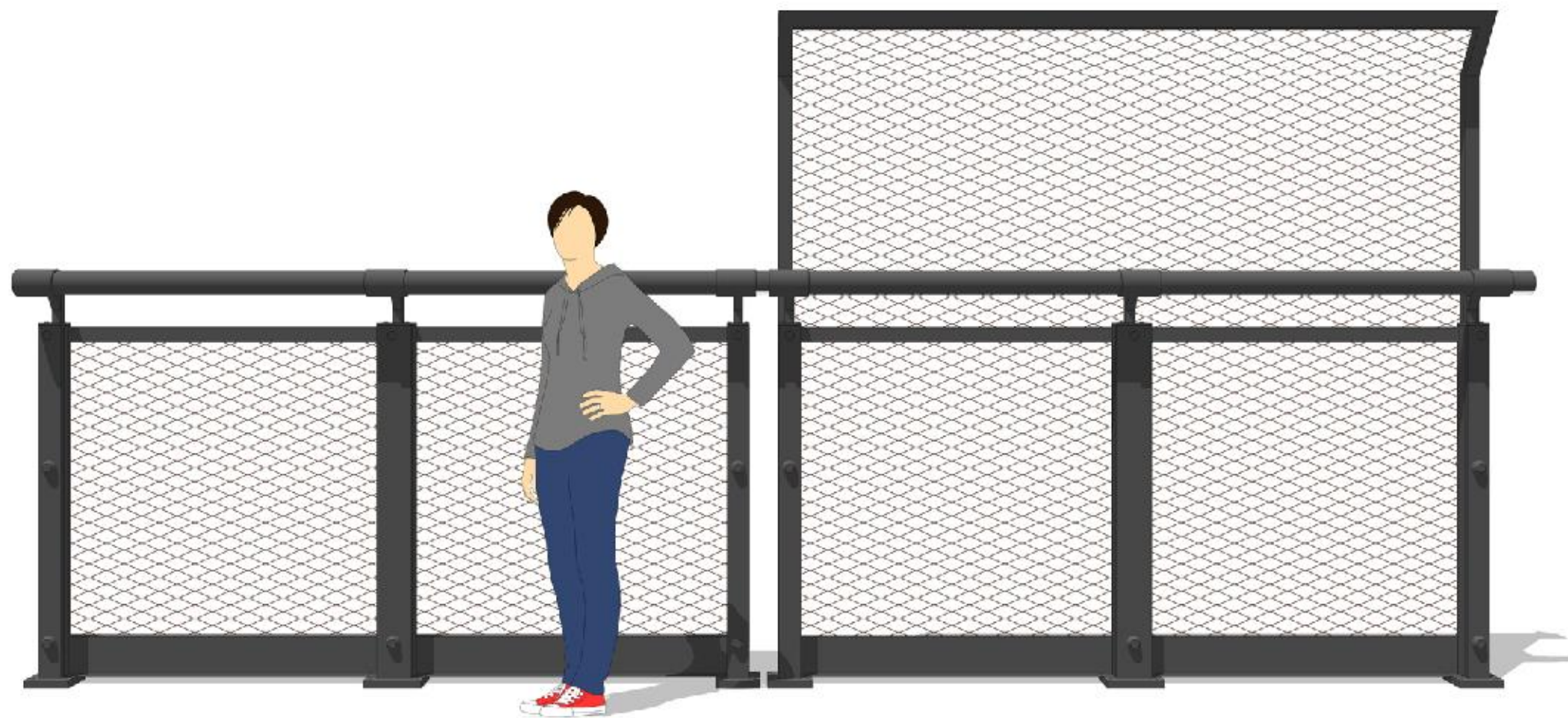
Regular Railing 1

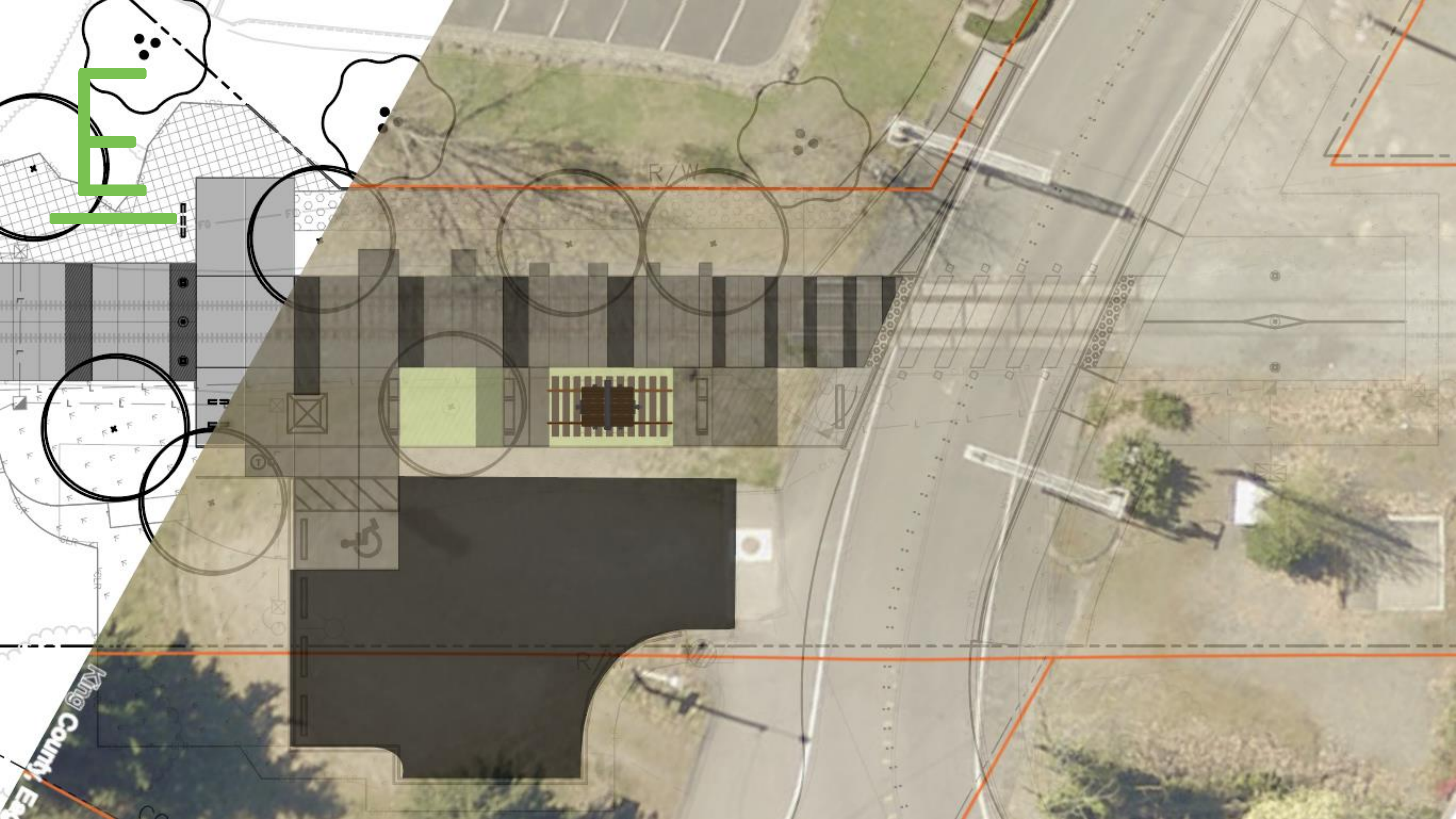
8' SEGMENT (round top square post)

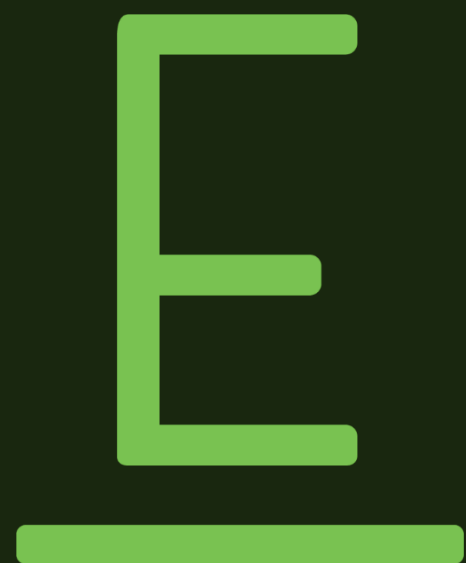


Height Variation 2

inward







King County

NE 8th St. Overcrossing

A new landmark in a growing trail and transit-oriented neighborhood, the NE 8th St. Overcrossing will provide a safe route over a busy arterial, and integrates with the Sound Transit Wilburton Station

FUND



DESIGN



PERMIT



BUILD



PROJECT COST:

\$31 Million

FUNDING SOURCES:

King County \$28 Million

Sound Transit \$3 Million

E



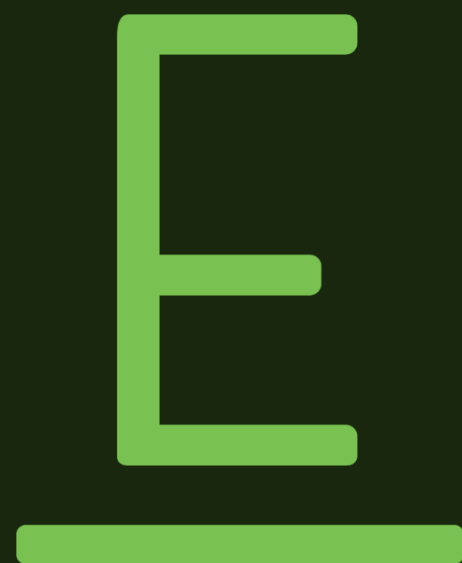


E



EF





Eastrail Partners

SR 520 Trail Connector

• Trail ramp to connect the Eastrail to Northup Way

FUND



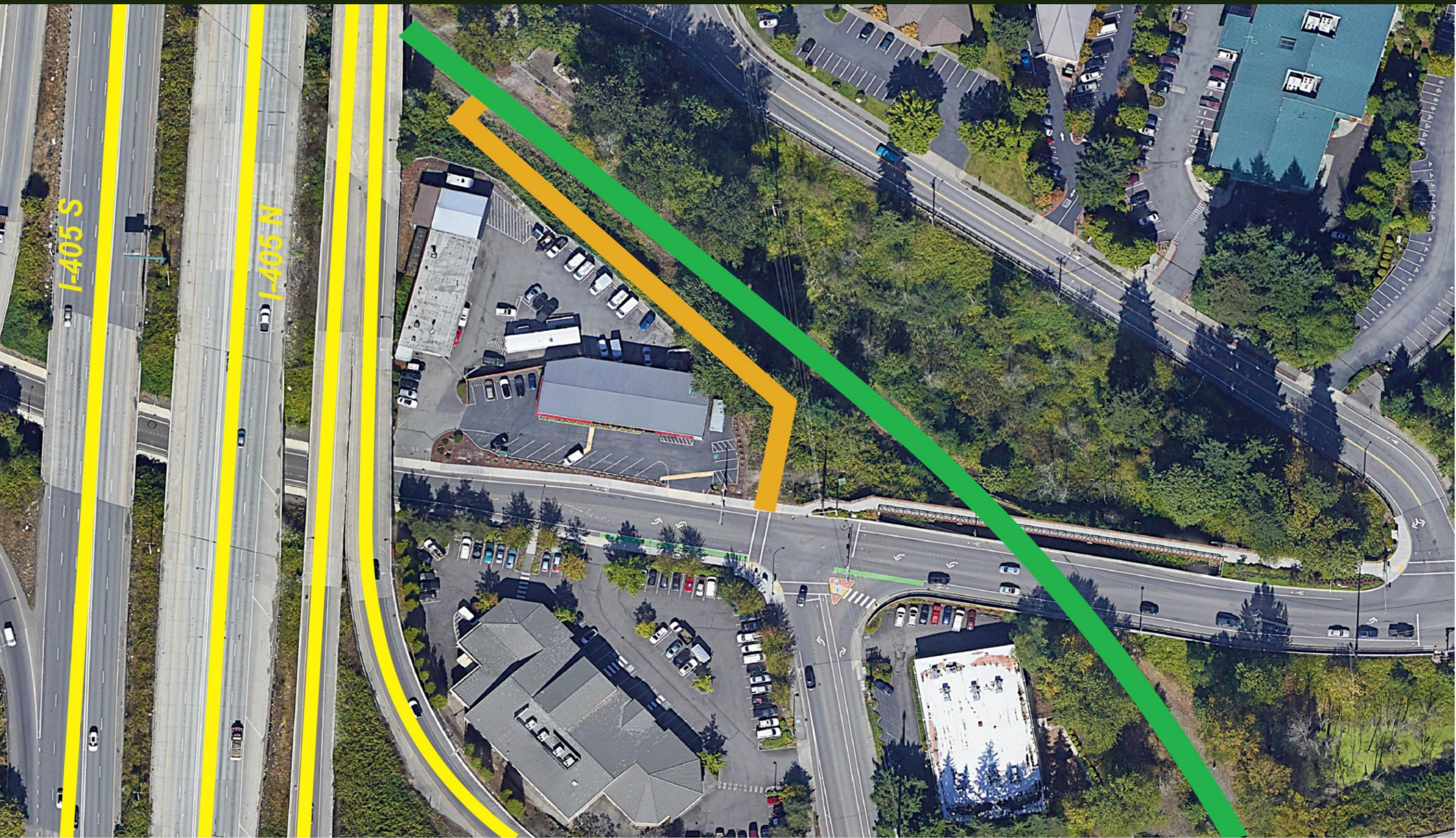
DESIGN



PERMIT



BUILD



PROJECT COST:
\$2.5 Million

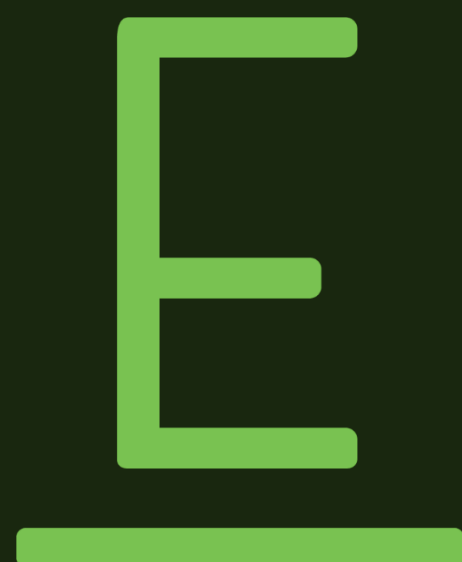
FUNDING SOURCES:
REI \$1M
Meta \$1M
King County \$.5M

E



E





City of Bellevue

Spring Boulevard Connector

Trail ramp to connect the Eastrail to Northrup Way

This connection will connect Eastrail to the 12th Street trail
between the Spring District and downtown.

FUND



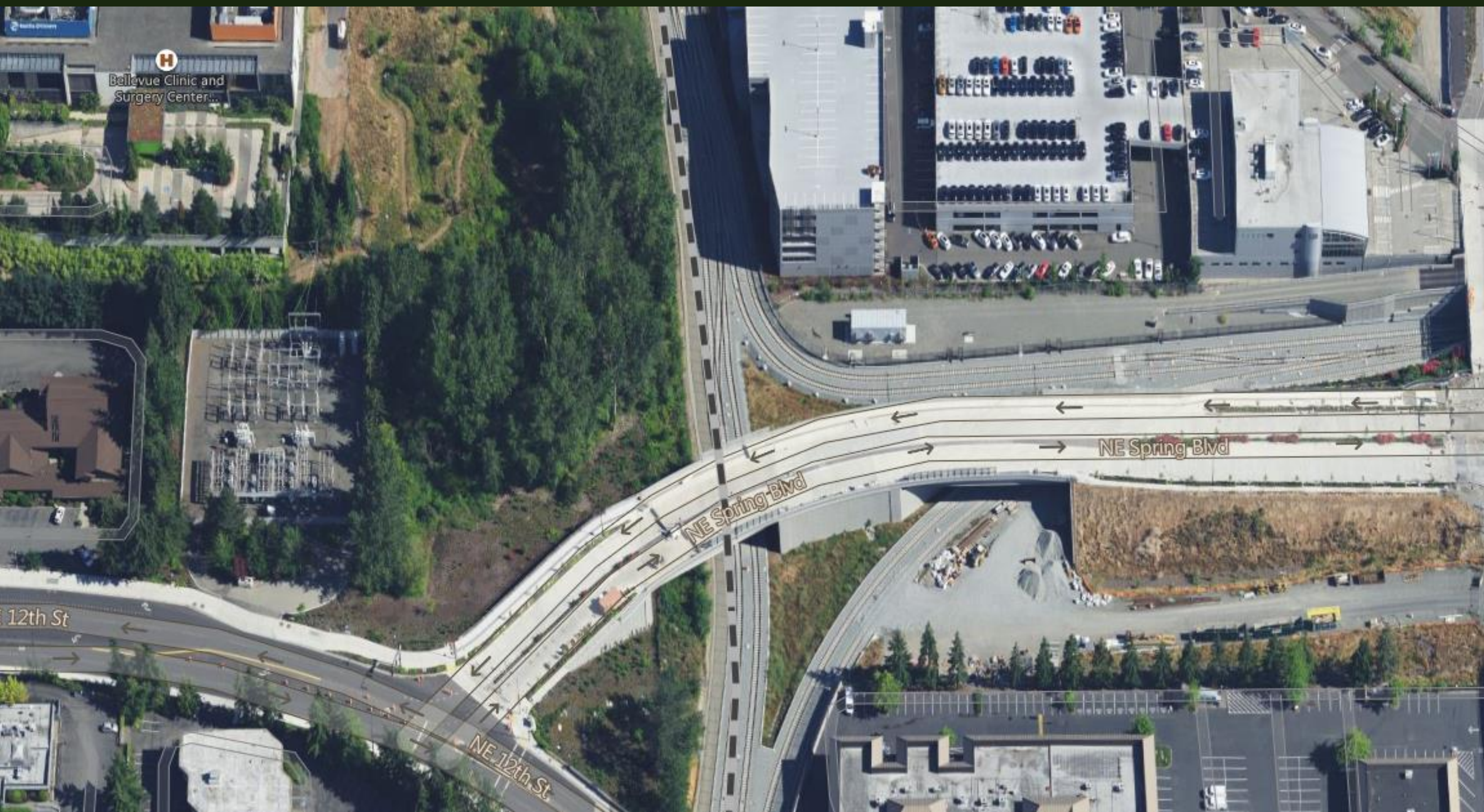
DESIGN



PERMIT



BUILD



PROJECT COST:

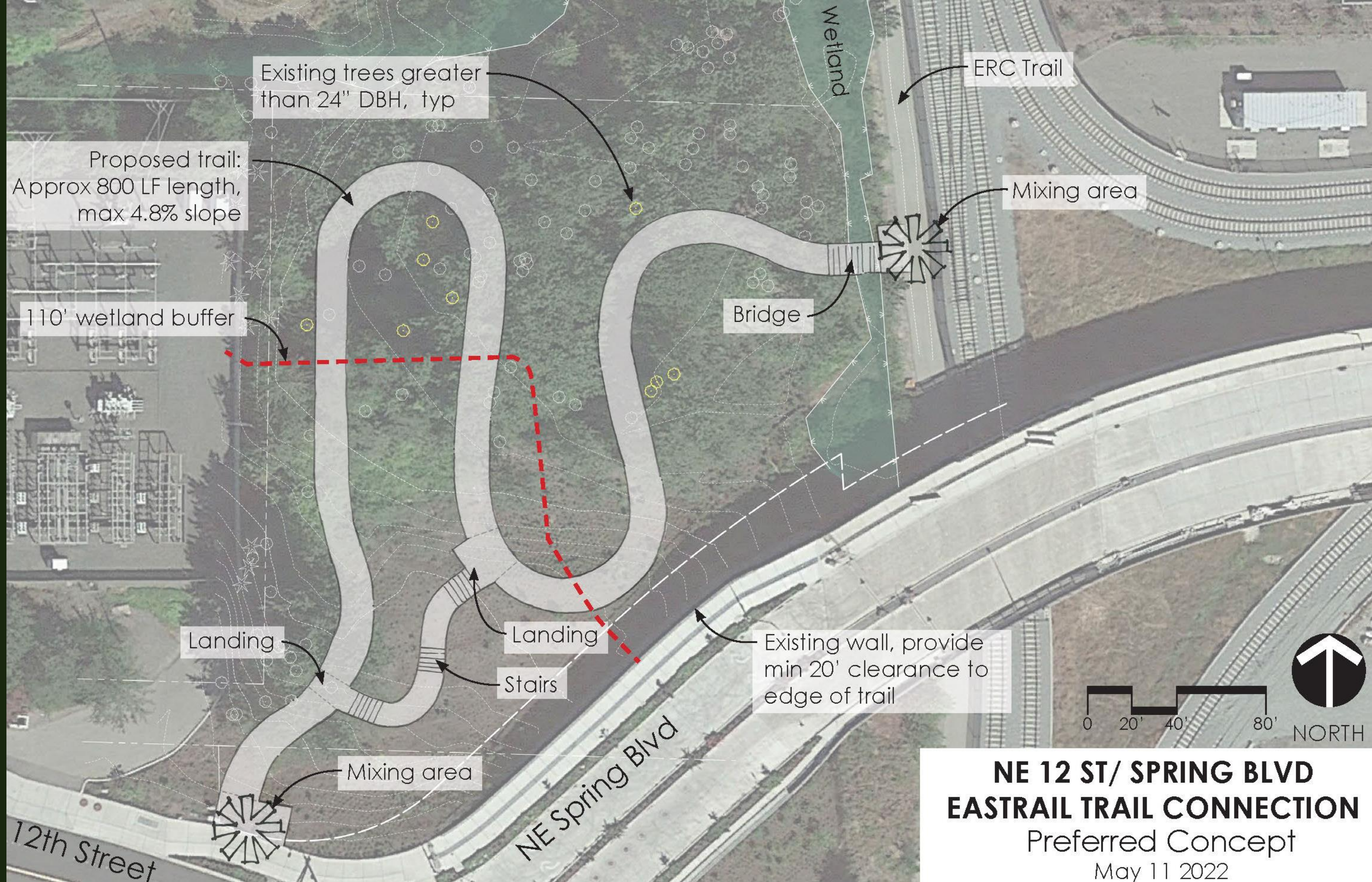
\$7M

FUNDING SOURCES:

City of Bellevue \$0.8M

Federal \$6.2M

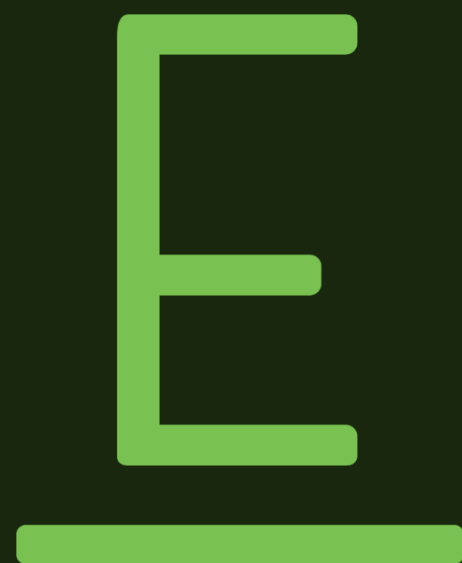
FILE



NE 12 ST/ SPRING BLVD EASTRAIL TRAIL CONNECTION

Preferred Concept

May 11 2022



King County & City of Bellevue

Ollis & Doolittle

Two new acquisitions will provide access to the Wilburton Trestle and
Eastrail from Woodridge, 118th, and Mercer Slough.

FUND



DESIGN



PERMIT



BUILD



E

TRESTLE

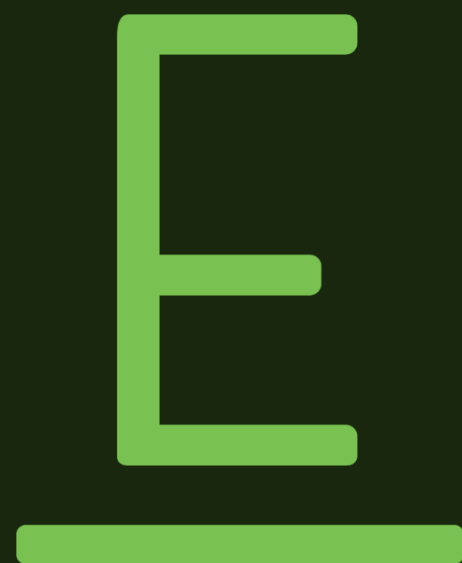
OLLIS

WOODRIDGE

MERCER
SLOUGH

DOOLITTLE





King County & City of Bellevue

SS4A Grant Eastrail

Partnership to Build full paved trail between SE 5th (the Wilburton Trestle) and SE 1st

FUND



DESIGN



PERMIT



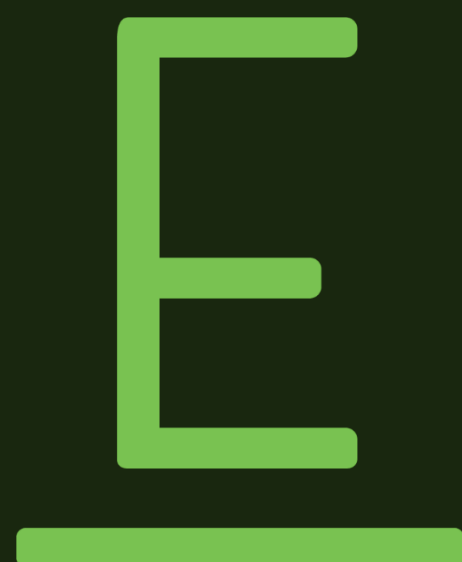
BUILD





EASTRAIL

CITY OF BELLEVUE SAFE STREETS 4 ALL PARTNERSHIP +
NE 8TH CONNECTION



King County & Partners

I-90 Steel Bridge

A project to connect Coal Creek Parkway to Mercer Slough, including the renovation of the I-90 steel bridge

FUND



DESIGN



PERMIT



BUILD





**EASTRAIL
MERCER
SLOUGH
GATEWAY**

I-90 TRAIL

118TH AVE SE

**COAL
CREEK
PKWY**

**.7 MILES
TRAIL**

**STEEL
BRIDGE**

**.11 MILES
TRAIL +
RAMP**

**SE 32ND
TRESTLE**

**.86 MILES
TRAIL**

I-90 STEEL BRIDGE PROJECT ELEMENTS