

**Transportation Commission
Study Session**

February 9, 2023

Bellevue Curb Management Plan

Presented By:

Chris Iverson | City of Bellevue

Alex Mercuri | Nelson\Nygaard

Lauren Mattern | Nelson\Nygaard



Agenda for Today



CMP Recap



**Curbside Guide +
Recommendations**



Next Steps

Objectives for tonight

- Project team informs Transportation Commission on draft recommendations within the Curbside Guide and welcomes discussion + feedback.
- No action requested at this time.



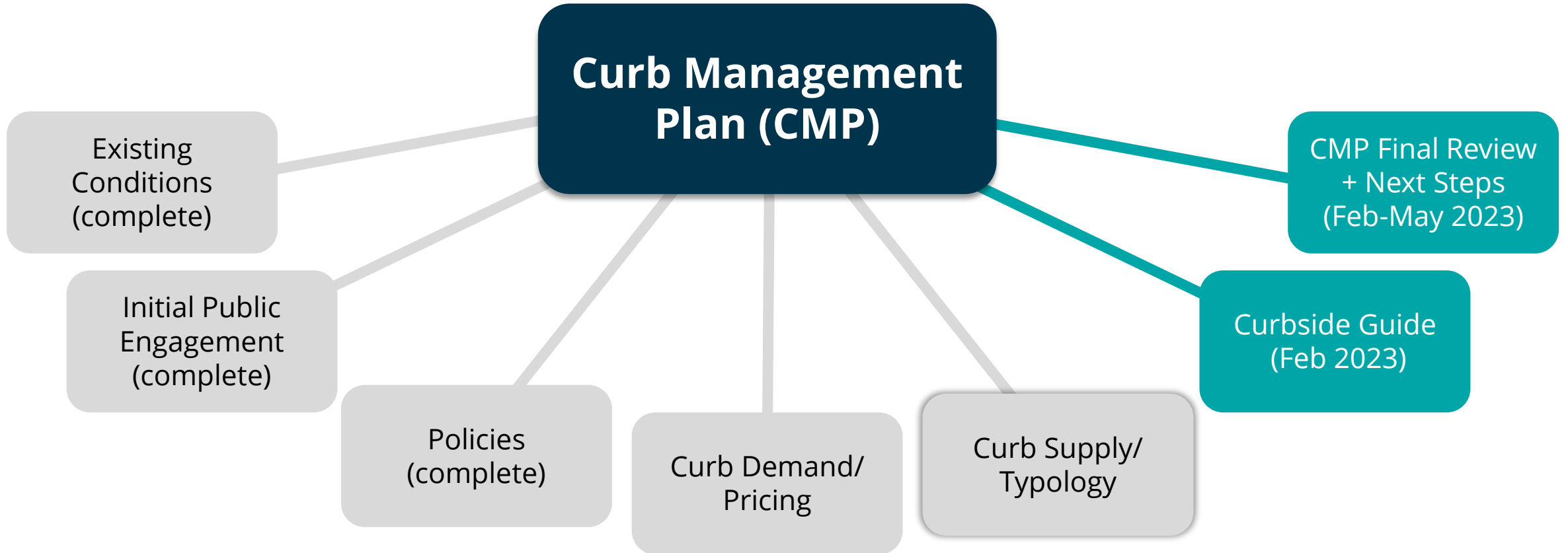


CURB MANAGEMENT PLAN RECAP

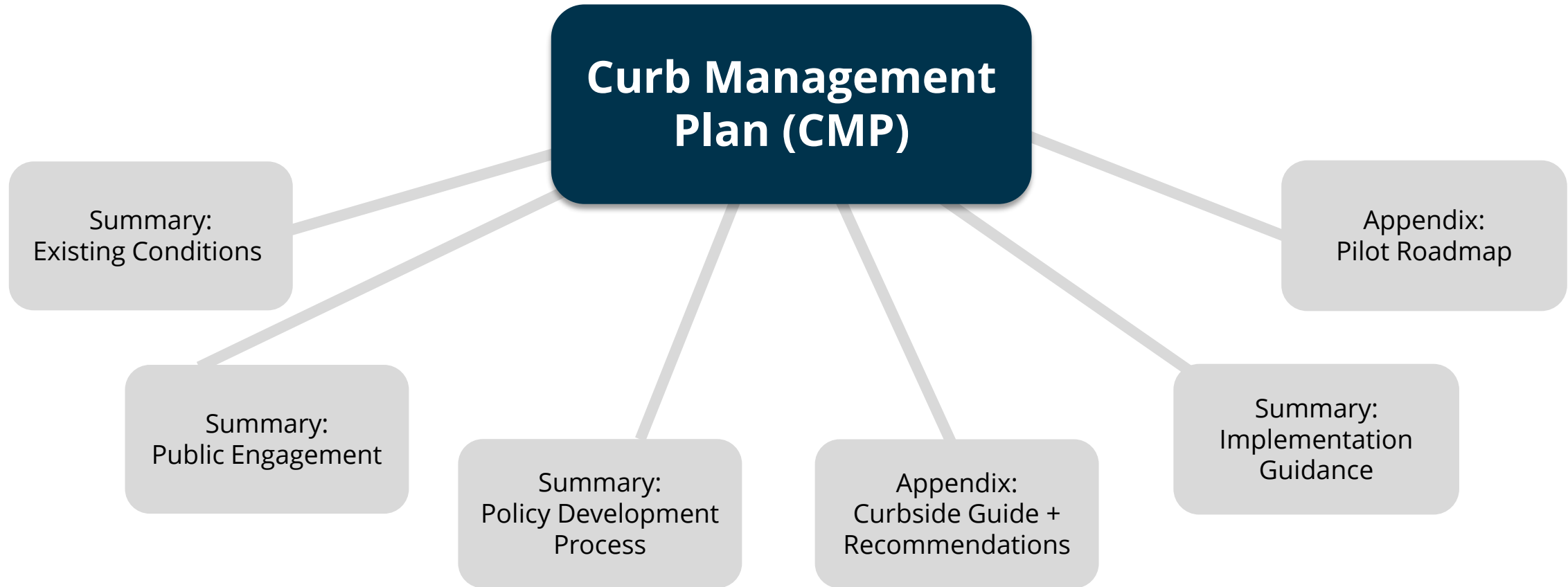
What is the Curb Management Plan?

The **Curb Management Plan (CMP)** is the culmination of a year's worth of planning and engagement on how best to manage Bellevue's valuable curb space efficiently and effectively.

CMP Context



CMP Content



Recap: Engagement

Stakeholder Interviews & Focus Groups



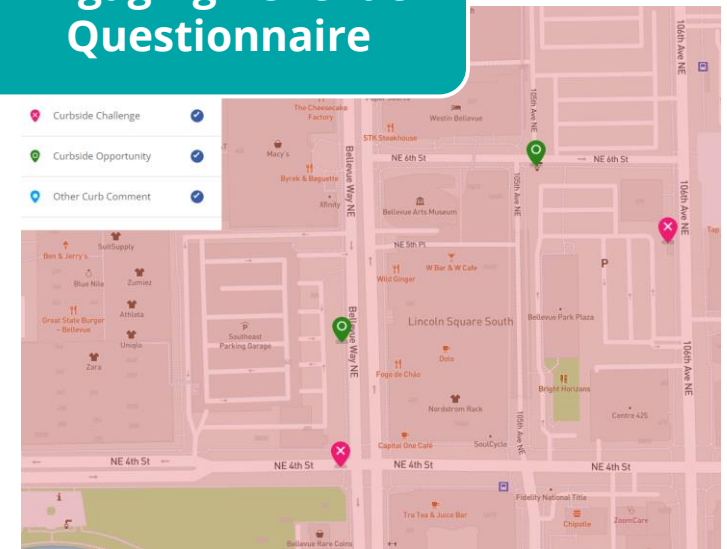
Concluded 6 focus group in March: Mobility Services, Local Businesses, Regional Employers, Residents, Advocates, and Development.

Curb Summit



Held on Tuesday, March 29. 65 attendance in the morning public session and 30 attendance in the afternoon practitioner workshop session.

Engaging Bellevue Questionnaire



Closed on April 15th. 196 responses received.

Recap: Engagement

Meeting Group	# of Meetings	Discussion Notes
City Council	3	Launch CMP; Adopt curb management policies
Transportation Commission	7	CMP Policy development; CMP content development
Planning Commission	3	CMP policy development
Focus Groups	6	Gathered feedback from curbside stakeholders
Curb Summit	1	Open-to-the-public virtual meeting for CMP
Questionnaire	N/A	Online questionnaire to inform CMP recommendations
Bellevue Downtown Association (TR Committee)	6	Overview of CMP; track CMP progress
Bellevue Chamber of Commerce (TR Committee)	4	Overview of CMP; track CMP progress
Bellevue Diversity Action Network	1	Overview of CMP; track CMP progress
Old Bellevue Merchant Association	1	Overview of CMP; track CMP progress

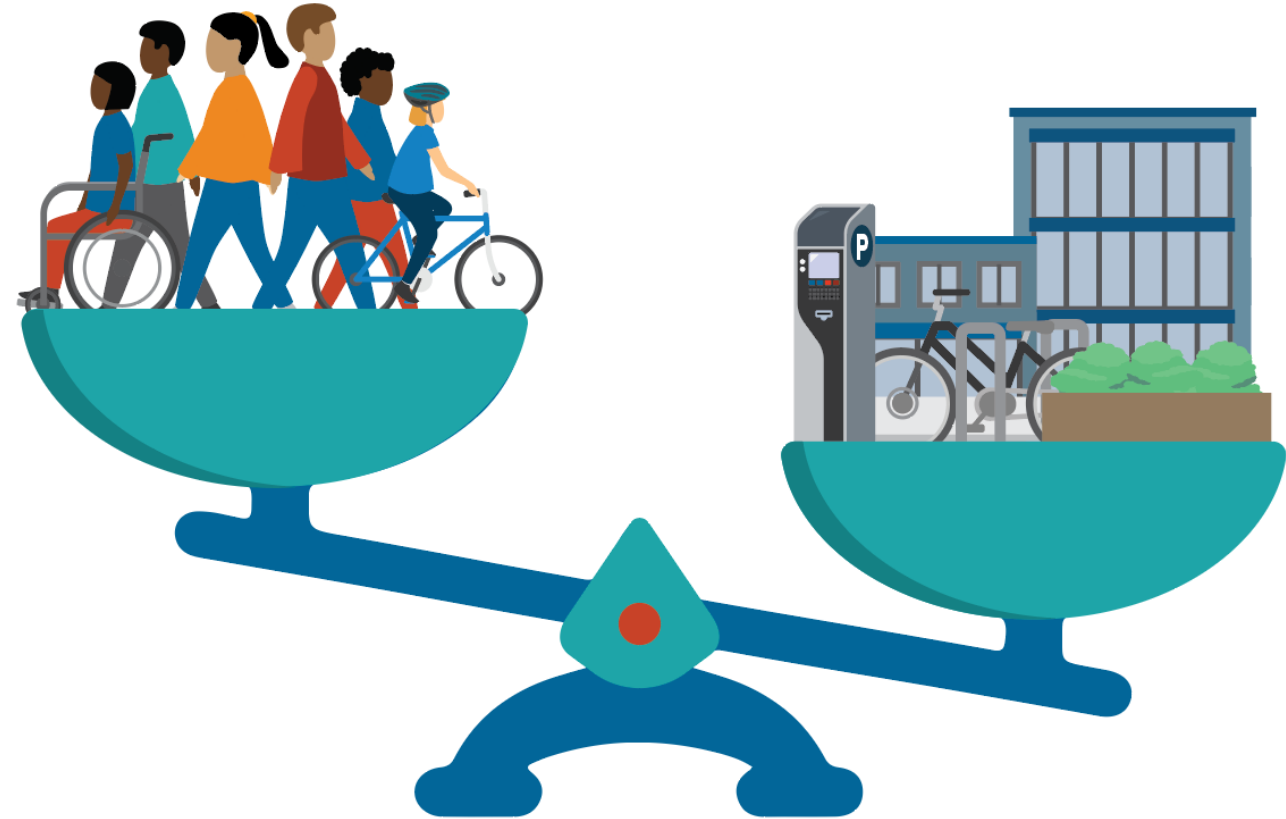
Recap: Engagement

Crosscutting themes:

- Prioritize pedestrian safety
- Interest in more people space
- Lack of loading space, generally
- Specifically, provide better support for freight delivery services
- Maintain a balance between flexibility/resilience and predictability/legibility
- Maximize the potential of enforcement and pricing
- Utilize digital tools and technology to improve curb performance

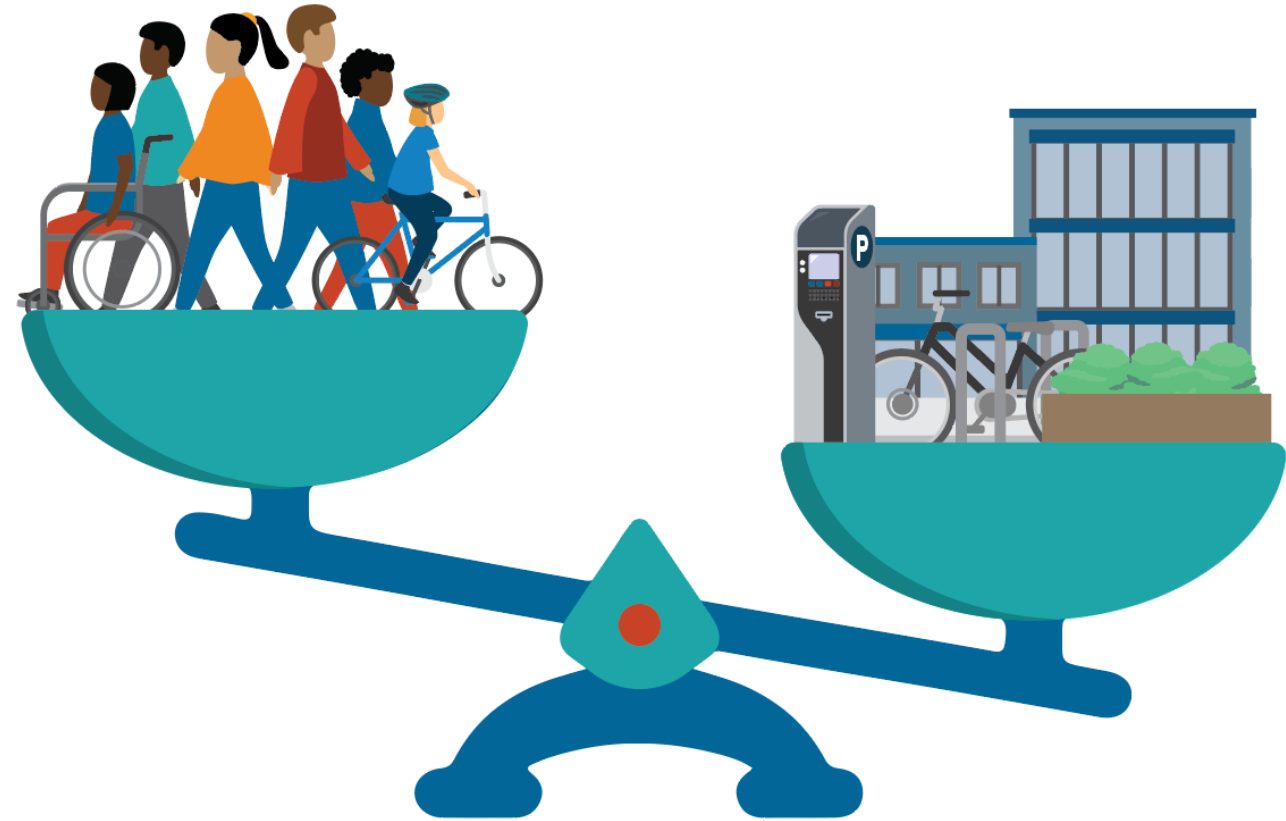
Recap: Curb Management Framework

- Curb space is a limited public resource that is subject to the forces of **supply and demand**
- The curb is the setting for myriad **mobility and placemaking functions**, all of which provide economic value to the community



Recap: Supply and Demand

- Curb Supply:
 - The **curb typology** addresses the supply side of curb management
- Curb Demand
 - The **curb pricing framework** will address the demand side of curb management





CURBSIDE GUIDE + RECOMMENDATIONS

Curbside Practices Guide

1 Curbside Regulations

2 Storage

3 Curb Access Features

4 Sustainable and Emerging Mobility

5 Curbside Activation

6 Digital Governance

Curbside Practices Guide

Each practice will be displayed as a "cut sheet" with the following information:

- Concept overview
- Existing conditions & practices
- Public Feedback
- Vision
- Strategies
- Implementation Actions
- Stakeholders
- Cost Considerations
- Timeline (short, medium, long term)
- Infographics, images, key takeaways

Practices

1 Curbside Regulations

Background:

- *Public Feedback:*
 - *The City should be proactive in managing sidewalks and traffic as population and congestion grow*
- *Data:*
 - *Curbs in Bellevue are primarily static – about 60% of Downtown Bellevue curb lanes are reserved for through traffic 24 hours a day.*



Practices

1 Curbside Regulations

Recommendations:

- Streamline and digitize **curbside regulations**
- Add resources for **curbside enforcement** and compliance
- **Modernize Bellevue's permitting system** and regulations to optimize curb use
- Consider amending language in the **Land Use Code** to better integrate the built environment with the curbside



Practices

Spotlight: Enforcement

- Add resources for **curbside enforcement** and compliance
 - Better enforcement of travel lane, bike lane blockages
 - Recent observations showed **travel lanes being blocked** due to loading activity for an **average of 2.5 hours per day**
 - **Passenger pick up and drop off** are the most common obstructions
 - Public engagement feedback has consistently noted **enforcement as a top priority** for better curb management in Bellevue
 - **Additional funding resources** will be needed to improve enforcement



Practices

2 Storage

Background:

- **Public Feedback:**
 - *There is a lack of short-term parking and loading space for vehicles, shuttles, and trucks to safely stop and load/unload passengers and goods.*
 - *Consider equity by maintaining parking access in all neighborhoods and ensuring parking does not exacerbate existing cost-of-living disparities*
- **Data:**
 - *Only 10% of Downtown Bellevue curbs are reserved for parking, commercial and passenger loading, and transit stops*



Practices

2 Storage

Recommendations:

- Launch paid parking program & update on-street parking **procedures and regulations**
- Refine and scale **residential parking** programs and regulations
- Inventory and expand **accessible parking**
- Create optimal conditions for dedicated **car share parking**
- Adopt **common locker requirements**



Practices

Spotlight: Paid Parking

Data:

- Parking surveys have observed an **average 80% - 86% occupancy** at the curbside in Old Bellevue & Spring District.
- Many blocks are **occupied 100% of the time** for several hours of the day, resulting in additional traffic (i.e. circling).

Benefits

- Revenue from parking fees can be used to **create a more user-friendly experience** at the curb
- Pricing and enforcement **work together to improve management** of the curb and make room for new and innovative programming



Practices

3 Curb Access Features

Background:

- *Public Feedback:*
 - *There is a desire for improved pedestrian and bicycle infrastructure like bike lanes, mid-block crossings, and curb bulbs*
 - *Emphasis on the importance of ensuring curb features are accessible and welcoming to people with disabilities, such as ADA-compliant on-street parking, wider sidewalks, and more open space.*



Practices

3 Curb Access Features

Recommendations:

- Install more **passenger loading zones** throughout the Urban Core
- Expand and relocate **conventional commercial loading zones**
- Establish a **smart loading zone** program



Practices

3 Curb Access Features (cont.)

Recommendations:

- Manage an expanded **employer shuttle loading** zone program
- Improve the **bus shelter and shared stop** system
- Establish formal protocols for curbside **transit layover**



Practices

3 Curb Access Features

Recommendations:

- Install more **passenger loading zones** throughout the Urban Core
- Expand and relocate **conventional commercial loading zones**
- Establish a **smart loading zone** program



Practices

Spotlight: Loading Zones

- Expand and relocate **conventional commercial loading zones**
- **Less than 1% of downtown curbs are currently reserved for commercial loading activity**

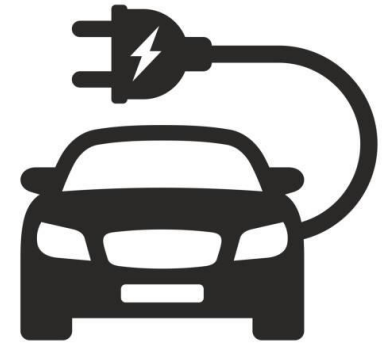


Practices

4 Sustainable & Emerging Mobility

Background:

- *Public Feedback:*
 - *There is an appetite for dedicated micromobility travel lanes and parking space to help address first/last mile gaps*
 - *Consider how equity should shape curb practices*



Practices

4 Sustainable & Emerging Mobility

Recommendations:

- Deploy public **charging infrastructure** to promote equitable electric mobility
 - Develop **a mobility hub** strategy and plan
 - Proactively evaluate current and future needs for **autonomous mobility providers**
- Leverage Bellevue's **Transportation Demand Management (TDM)** program to manage curb demands

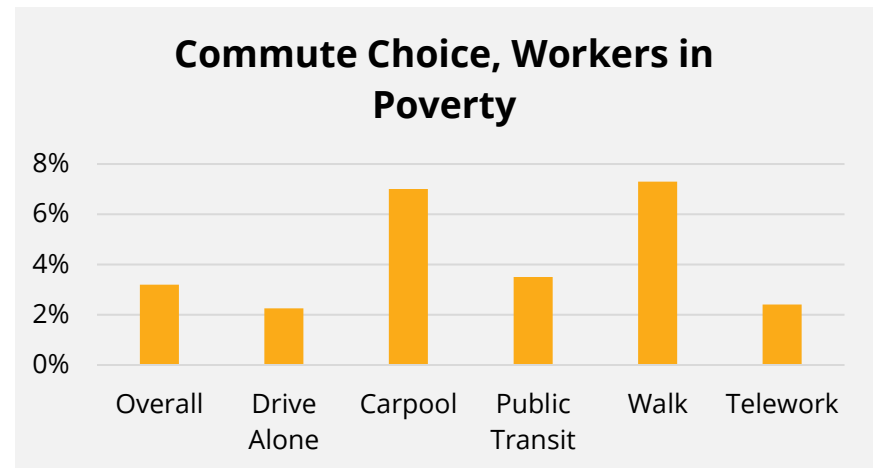
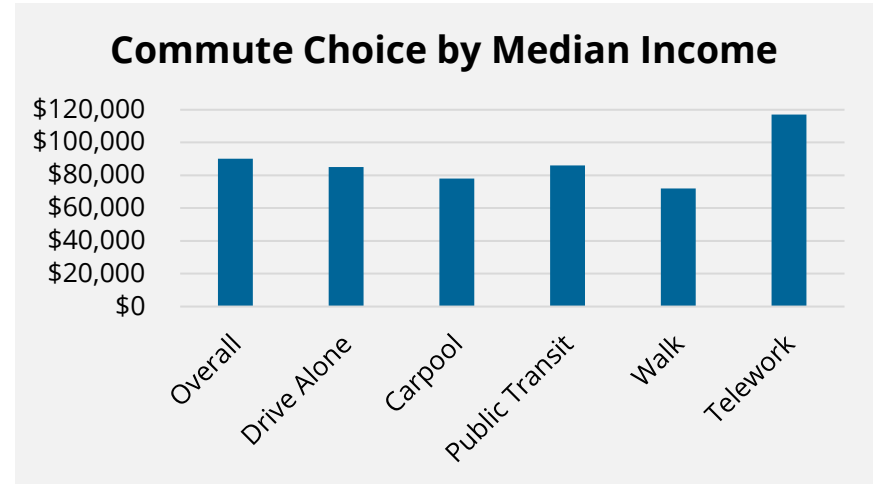


Practices

Spotlight: TDM

- **Leverage existing curbside assets** to make citywide TDM efforts more equitable
- Prioritize new assets that support walking, biking, and ride sharing
- Allocating more space to people traveling by carpool, walking, or biking will **support lower-income workers** and **contribute to more equitable and sustainable travel** patterns

Source: ACS Estimates, City of Bellevue, 2017-2021



Practices

5 Curbside Activation

Background:

- *Public Feedback:*
 - *Curb space should contribute to a more vibrant urban core*
 - *Promoting placemaking with creative curb uses can support equity*



Practices

5 Curbside Activation

Recommendations:

- Expand al fresco **on-street dining** program
- Establish criteria and guidelines for installation of **parklets and expanded green space**
- Formalize **food truck** zone program



Practices

Spotlight: Al Fresco Dining

Data:

- A 2021 survey on the program's impact along Main Street showed that **85% of respondents were more likely to visit the area again** because of the outdoor and on-street dining space.
- Most participating restaurants in 2021 and 2022 reported that their revenues exceeded summer 2019 revenues.



Practices

6 Digital Governance

Background:

- *Data:*
 - *Uniform data storage and sharing standards makes it easier to integrate new technology into existing systems*



Practices

6 Digital Governance

Recommendations:

- Collect, maintain, and share **curb asset information**
- Collect and analyze **curb activity data** to inform curb management decisions
- **Automate enforcement and pricing** processes
- Create and maintain **digital policy** expressions and management tools



Looking Forward

Post CMP Adoption

1. Data collection & equity analysis during implementation
2. Staffing
3. Permitting considerations
4. Delivering pilot roadmap



Curb Practices:

Clarifying Questions

Concurrence

3

NEXT STEPS

Next steps for the CMP

- ~~February 2023:~~
 - ~~High-level CMP recommendations + Pilot Roadmap~~
- March – May 2023:
 - Detailed TR Commission review + discussion of CMP
 - TR Commission comment “tracker” available
 - Public Review of CMP
- May 2023:
 - TR Commission action: final recommendation on CMP

Thank You

Chris Iverson | *City of Bellevue*

Alex Mercuri | *Nelson\Nygaard*

Lauren Mattern | *Nelson\Nygaard*





APPENDIX

Name change?

Curb Management Plan

1. “Curb Management” primarily focuses on the curbside lane, but the CMP has some recommendations for the full curbside experience (i.e. behind the curb in the planter / sidewalk area)
2. “Curb Management” is a standard industry term

Other potential ideas:

- Curbside Area Management Plan
- Curb-space Management Plan