



Comprehensive Plan Periodic Update

Thara Johnson, Comprehensive Planning Manager

Kate Nesse, PhD, Senior Planner

Community Development

February 22, 2023

BELLEVUE
COMPREHENSIVE PLAN

2044



Information

Summary of

- 1) The review process for the Environmental Impact Statement (EIS),
- 2) Progress on the Comprehensive Plan Periodic Update (CPPU)



History of CPPU Engagement



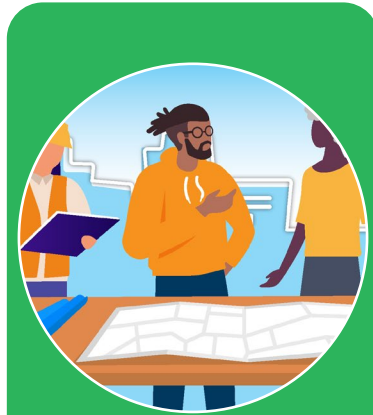
Jan 12, 2022

- Overview of Comprehensive Plan Periodic Update
- State Requirements



Mar 9, 2022

- Launch of Comprehensive Plan Periodic Update
- Timeline for Update



Jul 14, 2022

- Summary of Phase 1
- Framework for growth



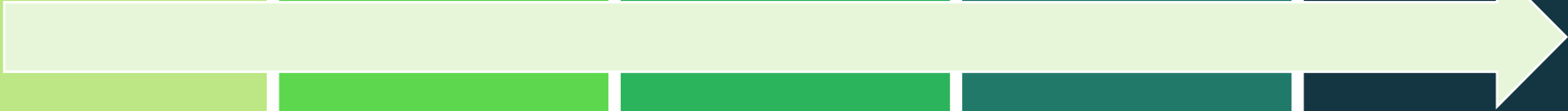
Sep 28, 2022

- Summary of Phase 2a
- Growth Alternatives



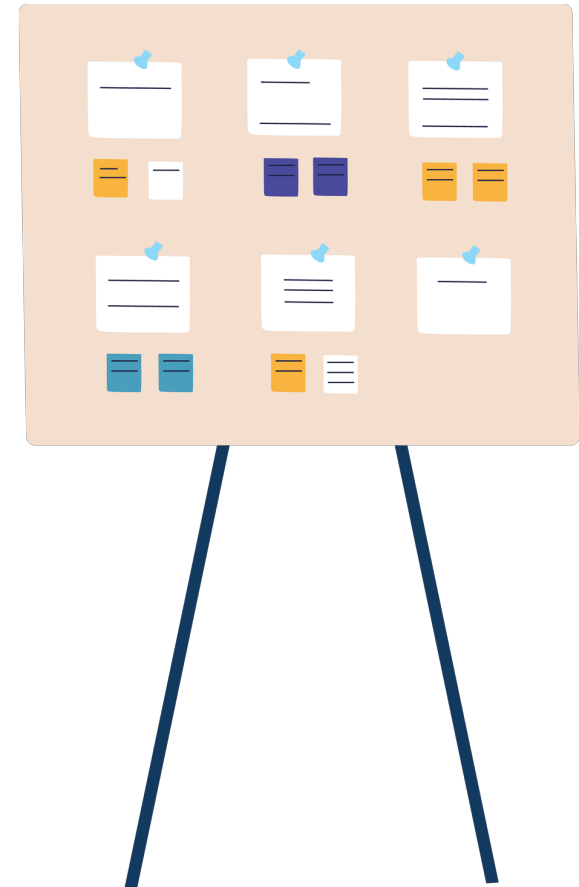
Feb 22, 2023

- Review of EIS Process
- Update on Phase 2b



Agenda

1. EIS Review Process
2. Progress on Comprehensive Plan Periodic Update
 1. Updates to narrative & policies by element
 2. Community Engagement in Phase 2b





EIS Review Process

Structure of SEPA Process

Project Introduced

- Comprehensive Plan Periodic Update Launched Feb 28, 2022

Determine Lead Agency

- City of Bellevue is the Lead Agency
- Note: City of Bellevue is also the applicant

Determine whether SEPA is required

- SEPA Determination of Significance issued Sept 29, 2022
- Environmental Checklist skipped because all agreed EIS necessary

Scope EIS

- The Scoping Period was Sept 30 to Oct 31, 2022
- Study 3 alternatives to study + no action alternative

Issue Draft EIS

- DEIS is scheduled to be released in April 2023

Issue Final EIS

- The Final EIS identifies a preferred alternative
- Any additional analysis that is needed is included in the FEIS



EIS Timeline

2022

2023



DEIS Public Meetings/Hearing: May 2023

EIS Analysis Underway

- Analysis of “informed build-out”
- Goal: Capture all possible future environmental impacts
- Informed build-out: Assumes all development will happen on redevelopable properties



Action Alternatives



Housing capacity: about 59,100 units
Focus of growth: Mixed-Use Centers



Housing capacity: about 76,300 units
Focus of growth: Mixed-Use Centers & areas with good access to transit



Housing capacity: about 94,500 new housing units
Focus of growth: Mixed-Use Centers, areas with good access to transit, and areas close to Neighborhood Centers

Relationship to Targets

- Planning for 35,000 housing units and 70,000 jobs
- Higher capacity gives more options for housing types
- Most cities have more capacity than their job and housing target



PC Engagement

- Reading the DEIS,
- Providing comments on the DEIS, and
- Providing recommendations on a preferred alternative to be studied in the FEIS.





Progress on CPPU

Project Timeline



Progress on Element Updates

Element	Policy Update	Narrative Update
Citizen Engagement	Initial language proposed	Not started
Land Use	Scoped	Scheduled for after FEIS
Neighborhoods	Scoped	Not started
Housing	Scoped	Scheduled for after FEIS
Capital Facilities	Scoped	Not started
Utilities	Initial language proposed	Not started
Transportation	Initial language proposed	Update in progress
Economic Development	Initial language proposed	Update in progress
Environment	Initial language proposed	Not started
Human Services	Scoped	Not started
Parks, Recreation & Open Space	Scoped	Not started
Urban Design & the Arts	Initial language proposed	Not started

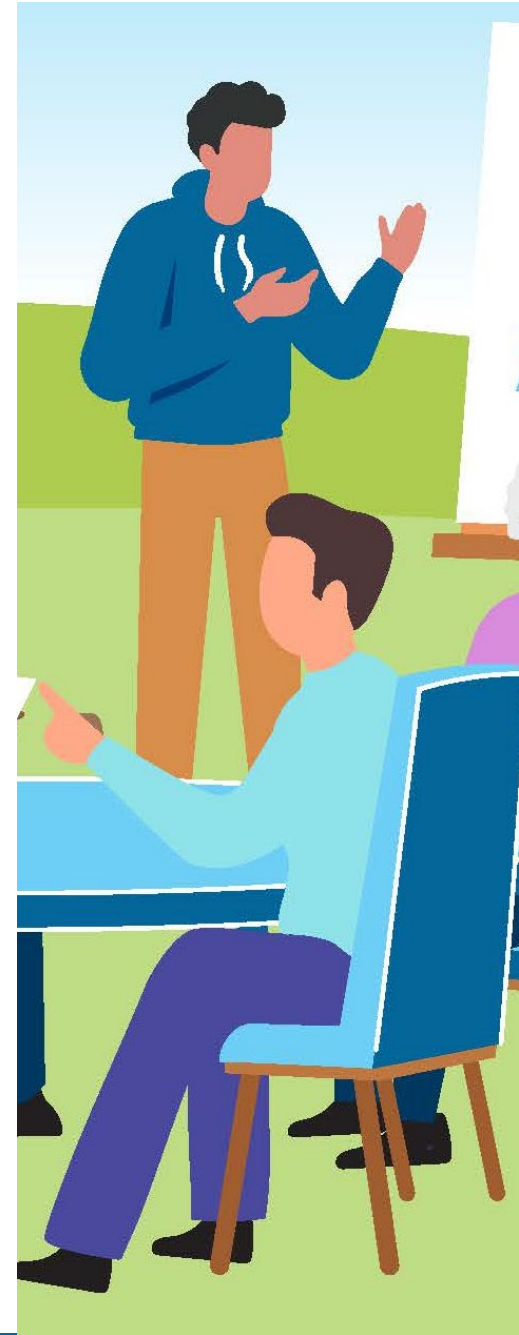
Phase 2b Engagement Activities In Progress

Statistically Valid Survey

- Complete, building dashboard

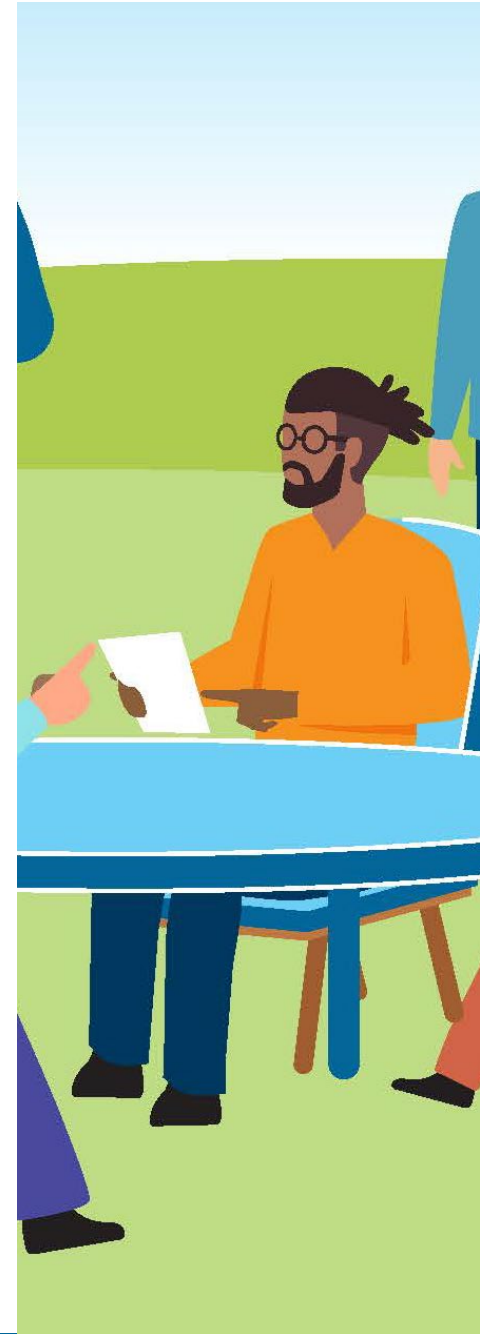
Housing Forums

- Scheduled for March 18 & 23
- Register:
<https://www.engagingbellevue.com/hub-page/bellevue-2044>



Community Groups Visited

- Bridle Trails Community Club (1/25/2023)
- Bellevue School District – Family Connection staff (1/31/2023)
- Mary’s Place – Staff (2/2/2023)
- Mary’s Place – Guests (2/2/2022)
- Bellevue Collection – Merchant Breakfast (2/9/2023)
- Bellevue Essentials Alumni Coffee (2/13/2022)
- Bellevue College Open House (2/28/2023)
- GIX Open House (planned, 4/13/2023)



Information

Summary of

- 1) The review process for the Environmental Impact Statement (EIS),
- 2) Progress on the Comprehensive Plan Periodic Update (CPPU)

