

Transportation Commission

2024-2033 Transportation Demand Management Plan

Kate Johnson & Colin Munson

May 11, 2023

Goals for Tonight's Presentation

- ☐ Provide high-level introduction to TDM in Bellevue.
- ☐ Describe the process & outline of the 2024-2033 TDM Plan Update.
- ☐ Discuss next steps in the planning process.
- ☐ Answer questions from the Commission.

Presentation Outline

- Background
 - Introduction to TDM
 - Current Bellevue TDM activities
 - 2015-2023 TDM Plan Strategies and Progress
- 2024-2033 TDM Plan Outline
 - Purpose
 - Process
 - Connection to 2044 Comprehensive Plan
 - Plan Outline
- Next Steps
- Q&A



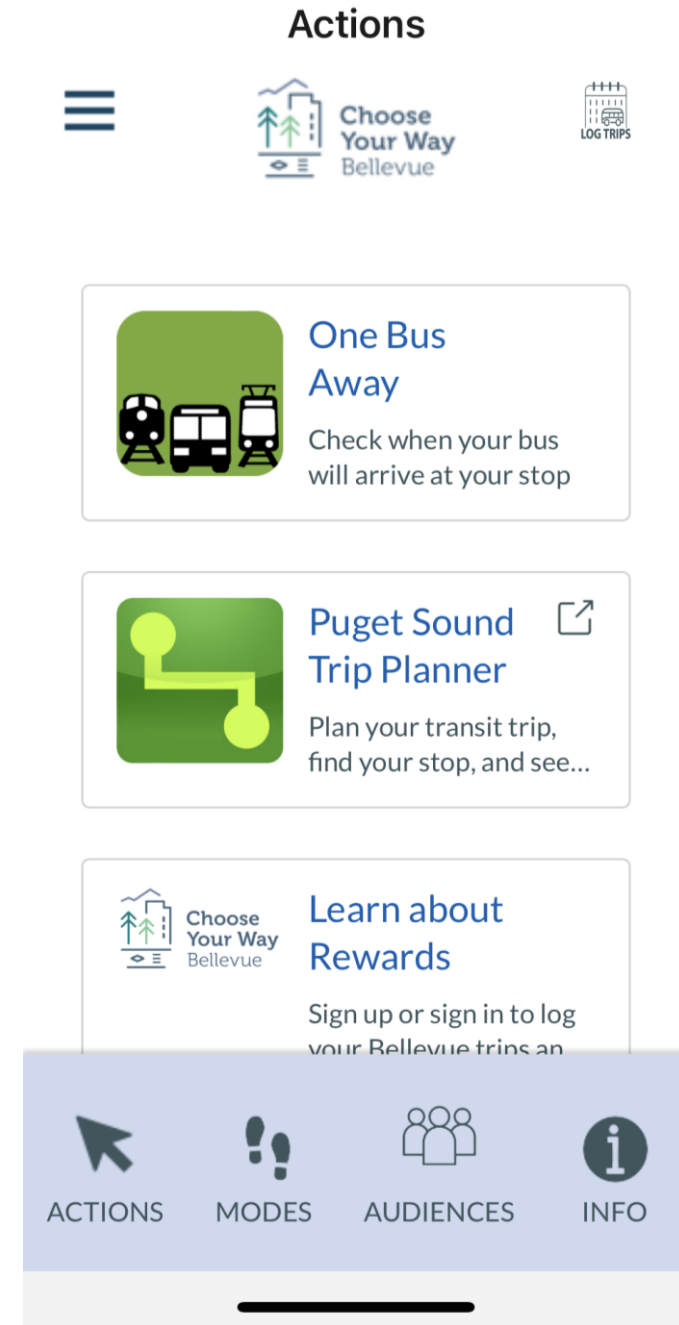
Introduction to TDM

- Increasing system efficiency by *facilitating choices*
 - Travel options information
 - Incentives
 - Encouragement



TDM in Bellevue

- Regulatory components
 - Commute Trip Reduction
 - Transportation Management Programs
- Non-Regulatory components
 - Choose Your Way Bellevue
 - Bellevue SchoolPool



Purpose of the TDM Plan Update

- Guide city TDM staff in implementing TDM program for 2024-2033.
 - Not adopted by City Council.
 - Administrative plan – includes strategies to meet Comp Plan policies.



2015-2023 TDM Plan: Strategies

- 1) Requirement-based programs, which are the state's Commute Trip Reduction Program and building Transportation Management Programs.
- 2) Product subsidies and discounts, such as transportation rebates and mini-grants.
- 3) Education and assistance, such as commute consulting for employers and property managers and real-time travel assistance.
- 4) Incentives and rewards, such as trip logging rewards.
- 5) Marketing and promotions, such as the Choose Your Way Bellevue website.
- 6) Research, planning, and coordination, such as understanding the Bellevue TDM market and improved coordination with other city departments, WSDOT, the Bellevue Downtown Association and local transit agencies.

2015-2023 TDM Plan: Targets and Progress

Non-Drive-Alone Rate			
Population	Comprehensive Plan Baseline (2012)	Most Recent Result	2023 Bellevue TDM Plan Target
Downtown workers	29%	35% (during 2012-2016)	46%
Citywide workers	26%	34% (during 2017-2021)	33%
Citywide residents	35%	48% (during 2017-2021)	40%

2024-2033 TDM Plan Planning Process

- Update to 2015-2023 TDM Plan
- Community Engagement
- Four presentations for the Transportation Commission



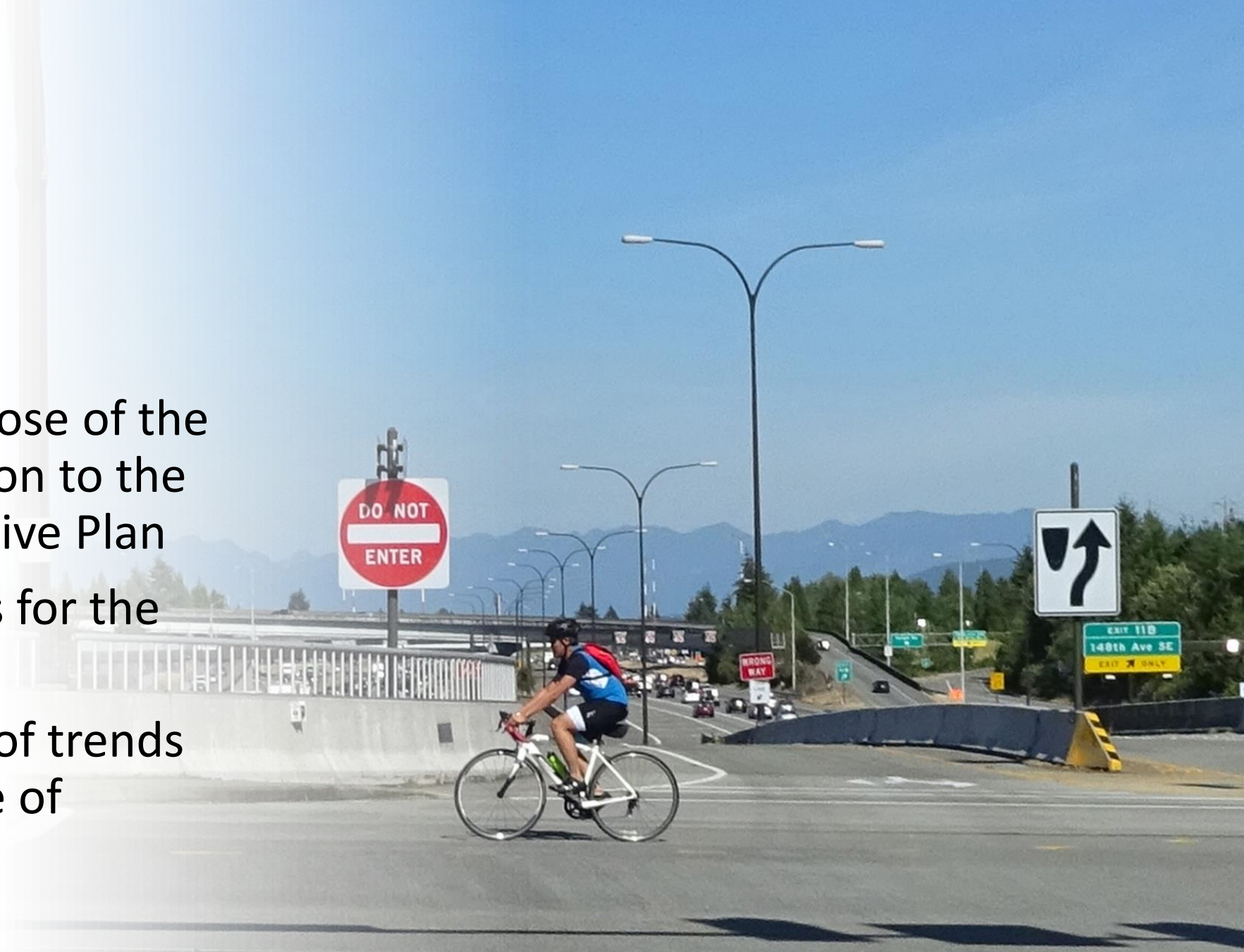
2024-2033 TDM Plan Outline

1. Introduction
2. Demographic Characteristics and Trends
3. TDM Planning Landscape: Assessment of Other Relevant Plans
4. Survey and Market Research
5. Measurement
6. Implementation Strategies

Chapter 1: Introduction

Purpose:

- Establish the purpose of the plan and connection to the 2044 Comprehensive Plan
- Establish the goals for the TDM Plan
- Provide overview of trends in the next decade of transportation



Chapter 2: Demographic Characteristics and Trends

Purpose:

- Present residential and employer data
- Present relevant general demographic trends, specifically changes from 2015-present
- Identify key takeaways for the TDM program

ONE WAY



Chapter 3: TDM Planning Landscape

Purpose:

- Evaluate prior TDM work and plans
- Discuss other relevant Bellevue plans
- Highlight key takeaways and considerations

Chapter 4: Surveys & Market Research

Purpose:

- Summarize several city and TDM surveys & research
- Identify key takeaways and focus areas for the TDM program

Chapter 5: Measurement

Purpose:

- Describe old and new goals and mode share targets in keeping with the Comp Plan
- Discuss general TDM measurement practices



Chapter 6: Implementation Strategies

Purpose:

- Outline TDM strategies for 2024-2033
- Defined by TDM staff with input from the Commission & public comment

Topic Highlight: Key Trends in 2024-2033

- Telework, hybrid work and office spaces
- Equity, housing costs and lengthening commutes
- Environmental stewardship and TDM
- New transportation technologies



Next Steps

- June 8: Present background chapters for Commission review.
- July 13: Present full draft of 2024-2033 TDM Plan to the Commission; develop “public review draft.”
- October 12: Present final draft version to Commission for endorsement.
- Fall: 2024-2033 TDM Plan transmitted to City Council.

THANK YOU

Kate Johnson, kmjohnson@bellevuewa.gov, 425-452-7896

Colin Munson, cmunson@bellevuewa.gov, 425-452-2855

2044 Comprehensive Plan TDM Goals

- TR-9: Coordinating with other Eastside jurisdictions, the private sector, and transit providers to develop and implement uniform or compatible TDM strategies;
- TR-10: Requiring employers to implement commute trip reduction programs for employees;
- TR-11: Encouraging employers to help reduce peak hour commute trips by facilitating employees' use of telework and other flexible scheduling options;
- TR-14: Requiring new developments that place significant impacts on the transportation system to implement transportation management programs to reduce drive-alone commute trips to the site;
- TR-15: Providing outreach and assistance to increase awareness of alternatives to driving alone; and
- TR-16: Evaluating and facilitating carsharing and bike sharing programs.