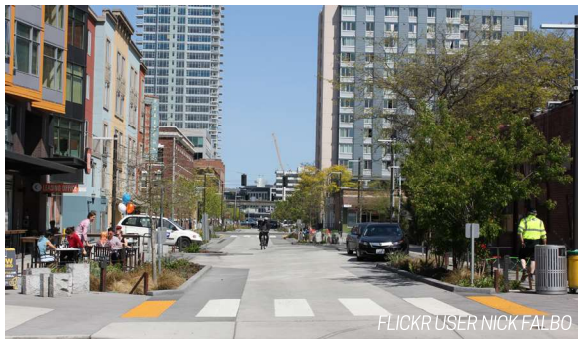


TRANSPORTATION

STREET NETWORK AND CONNECTIVITY

The vision of the Wilburton Commercial Area as a vibrant, walkable urban neighborhood hinges on the major improvement of existing street connections including both redesign of existing rights-of-way and the creation of new connections in key locations throughout the Study Area. Figure 4.04 is a conceptual diagram showing where new streets might be created in the Study Area. There are four street types proposed, plus stairways where grade is a challenge. The proposed street types are described below:



LOCAL STREET

Designed primarily for local access with lower vehicle speeds than on arterials. This is a comfortable space for multi-modal travel.



PEDESTRIAN PATH

Through-block connections and connection to the ERC will create comfortable and safe space for people walking and biking.



ALLEYS WITH ADDRESSES

Activated alleys are often much more human-scaled than typical streets. Active uses can encourage people to linger.



FESTIVAL STREET

Used as typical vehicle thoroughfares much of the time, festival streets are designed for frequent non-vehicular uses like farmer's markets.

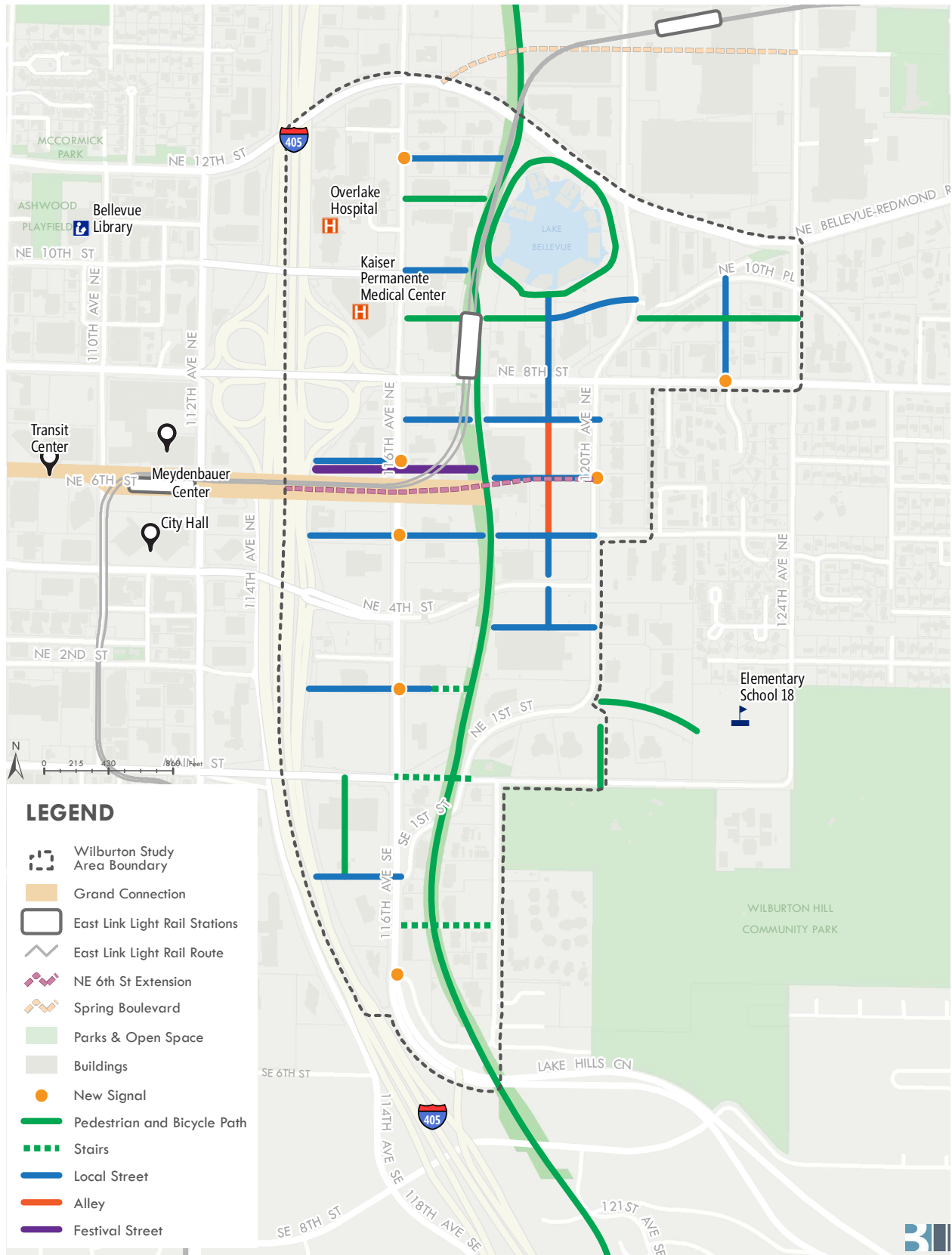


FIGURE 4.09: ILLUSTRATIVE NEW CONNECTION LOCATIONS
Actual new connection locations to be determined.