



Comprehensive Plan Periodic Update : Community Engagement Policies Economic Development Policies

Emil King, Planning Director
Kate Nesse, Senior Planner
Brooke Brod, Community Engagement Lead

Community Development

Planning Commission | January 24, 2024



- Community Engagement
- Economic Development

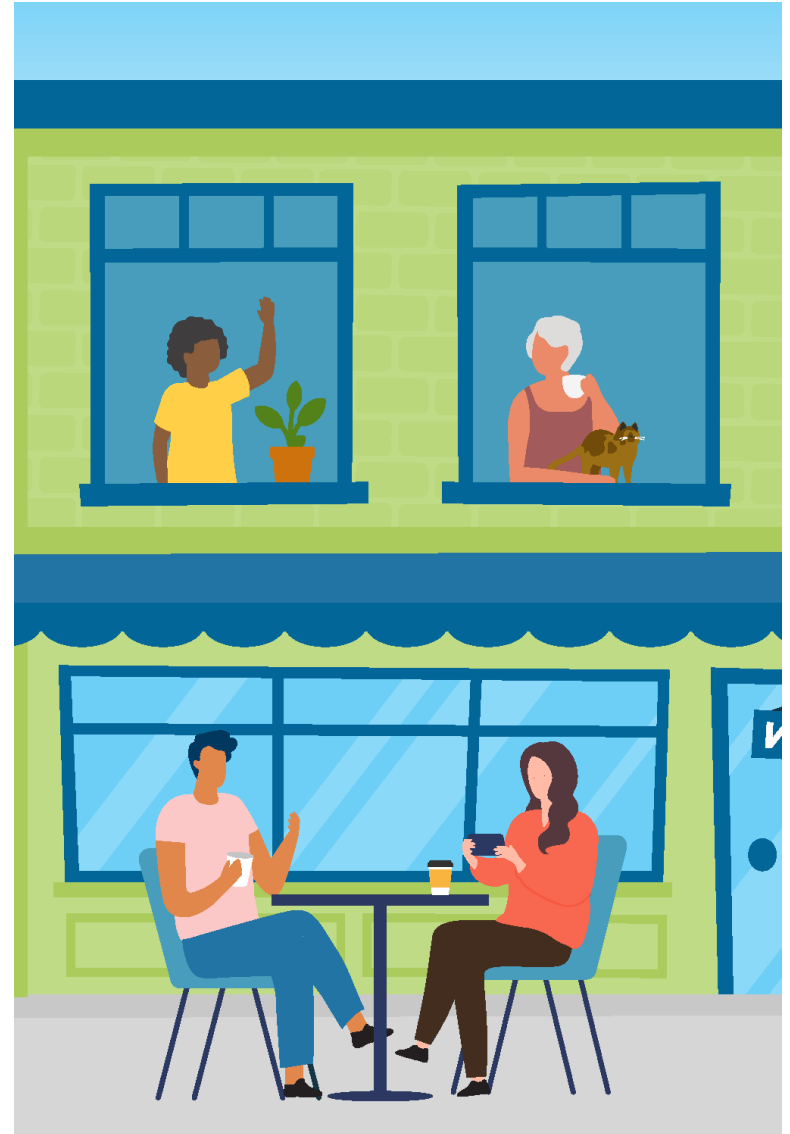
Direction on issues to address before moving to final draft stage





Agenda

1. Background
2. Recommended Policy Changes
3. Next Steps



Background

* Q2 2022	Update the Vision
* Q3 2022	
* Q4 2022	Lay the Foundation
* Q1 2023	
Q2 2023	Discuss Options
Q3 2023	
* Q4 2023	Refine Map & Policies
* Q1 2024	
Q2 2024	Recommend & Adopt
Q3 2024	

- **February 28, 2022** – Council launched Comprehensive Plan Periodic Update
- **March 9, 2022** – PC reviewed the scope of the update to the Comp Plan
- **September 28, 2022** – PC reviewed expected scope of updates in elements
- **February 22, 2023** – PC heard a progress report on each element
- **January 24** – PC will review Community Engagement & Economic Development
- **February to April** – PC will review updates to other elements

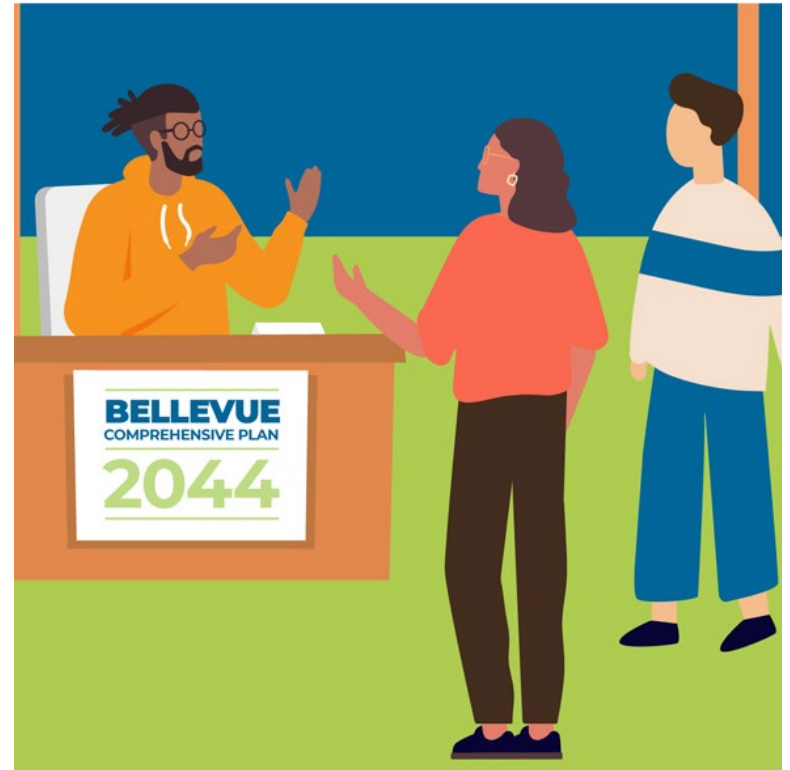
* Planning Commission Meeting related to elements

Background

Date	Elements
Jan 24	Community Engagement; Economic Development
Feb 14	Land Use
Feb 28	Future Land Use Map
Mar 13	Neighborhoods; Climate & Environment; Parks (rec from PRSB)
Mar 27	Housing; Human Services (rec from HSC); Urban Design & the Arts (rec from AC)
Apr 10	Transportation; Capital Facilities; Utilities (rec from ESC)
Apr 24	Subarea Policies (if needed)

Background

- Heard from **over 5,000 community members**
- Targeted outreach to under-represented groups
- Statistically valid survey
- Strategy Team knowledge and experience
- Taking into account:
Existing and future residents & businesses



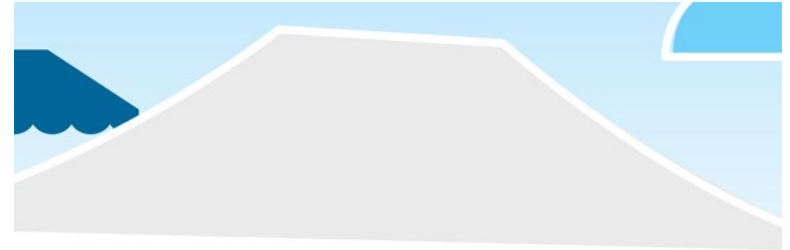
Background

Policy Move Survey still open:

www.EngagingBellevue.com/Bellevue-2044

Community Open House

- About 100 attendees
- Received some feedback about both Community Engagement and Economic Development





Community Engagement



Building Community Capacity

New section to support a transparent and productive dialog between city and community.

Policy Number	Change
CE-1	Added to focus on building relationships with people and groups in the community.
CE-2	Added to focus on building community leaders
CE-3	Added to support community education of civic activities

Planning for Engagement

Focus on the planning and analysis leading up to engagement.

Policy Number	Change
CE-4	Updated to assess impacts of projects, especially for historically underserved communities.
CE-5	Updated to broaden tools for engagement.
CE-6	Updated to include the community at the appropriate level for the project
CE-7	Updated to meet the community needs in a culturally relevant manner
CE-8	Added to ensure representation in engagement

Engaging the Community

Added policies to support practices of engagement and how the City engages with the community.

Policy Number	Change
CE-9	Added to ensure the City uses an understandable writing style
CE-10	Added to define the community broadly.
CE-11	Added to create conditions for meaningful community engagement.
CE-13	Added to reduce barriers to engagement

Engaging the Community

Continued...

Policy Number	Change
CE-14	Added to support expanding opportunities for engagement
CE-16	Added to support equitable engagement by setting metrics for engagement
CE-17	Added to support continuous communication with the community

Supporting Good Relationships

Policies focus on guiding how the city interacts with the community.

Policy Number	Change
CE-18	Added in response to several CPPs that added tribal governments to existing coordination policies
CE-20	Added to support continuous communication with the community



- Community Engagement

- Community Engagement





Economic Development



Business Development

Policies focus on how the city can provide support for the growth of businesses in the city.

Policy Number	Change
ED-15	Added to provide support for the continued growth of arts organizations

Community Livability

Policies focus on amenities that make Bellevue a great place to live and work.

Policy Number	Change
ED-18	Updated to support the development of housing to support Bellevue workers.
ED-22	Updated to give the City a more active role in strengthening destination retail.
ED-27	Removed limiting list and broadened to include all areas, not just commercial areas in decline.

Education

Policies relate to education at all stages of life.

Policy Number	Change
ED-34	Added to support the recruitment of a four-year research institution.

Economic Implementation

Policies in this subsection provide direction for the City in the implementation of economic policy.

Policy Number	Change
ED-46	Added to support city assistance in locating space for displaced businesses.



Direction

Review policies in:

- Economic Development

Direction on issues to address before moving to final draft stage

- Economic Development





Next Steps

Review elements again at final draft stage

- Suggested changes
- Summarize community input regarding these elements

