



Comprehensive Plan Periodic Update

Neighborhoods, Climate & Environment, Parks, Recreation & Open Space

Emil King, Planning Director

Kate Nesse, Senior Planner

Community Development

Planning Commission | March 13, 2024



- Parks, Recreation & Open Space
- Neighborhoods
- Climate & Environment

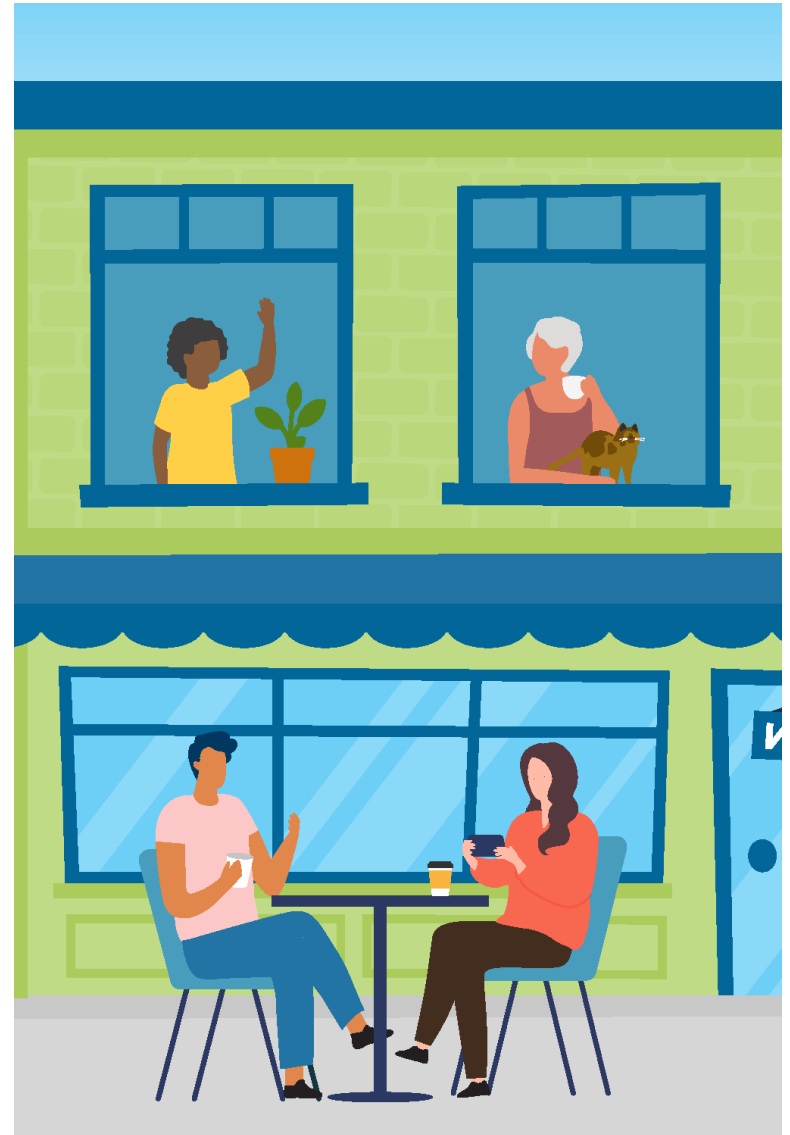
Direction on issues to address before moving to final draft stage





Agenda

1. Background
2. Recommended Policy Changes
 - a) Parks, Recreation & Open Space
 - b) Neighborhoods
 - c) Climate & Environment
3. Next Steps





Background

Date	Elements
Jan 24	Community Engagement; Economic Development ✓
Feb 14	Land Use & Future Land Use Designations ✓
Feb 28	Future Land Use Map ✓
Mar 13	Nighborhoods; Climate & Environment; Parks (rec from PRSB)
Mar 27	Urban Design & the Arts (rec from AC); Capital Facilities; Utilities (rec from ESC)
April 3	Housing; Human Services (rec from HSC)
Apr 10	Transportation; Capital Facilities; Utilities (rec from ESC)
May	Comprehensive Plan Draft



Parks, Recreation & Open Space



Parks and Community Services Board Recommendation



Parks and Community Services Board unanimously recommended the amendments to the Parks Recreation and Open Space element policies.

Community Feedback

Support

- Ecological function of parks
- Increasing access geographically
- Increasing equitable access

Missing

- Focused on details of parks planning
- Safety



Parks and Open Space Policies

The subsection focuses on the physical planning of parks, trails, open space and access to these resources.

Policy Number	Change
PA-2	Updated to reference keeping pace with growth and the Parks and Open Space System Plan.
PA-3	Updated to include consideration for underserved areas and areas experiencing growth.
PA-4	Added to ensure maximization of space is considered in park development.
PA-5	Added to support safe access to parks.
PA-11	Updated to include details of financing tools

Parks and Open Space Policies

Continued...

Policy Number	Change
PA-13	Updated to clarify that this applies to privately owned and operated facilities. Combined with (old number) PA-14.
PA-14	Updated to emphasize the safety of the linkages.
PA-15	Updated to emphasize the role Eastrail plays in the parks system.
PA-16	Added to include emerging facility needs.
PA-17	Updated to emphasize community involvement in the planning process.

Parks and Open Space Policies

Continued...

Policy Number	Change
PA-19	Added to ensure planning for public gathering spaces.
PA-20	Added to support development of facilities along the Grand Connection beyond active transportation and linkage to parks.

Recreation and Community Services Policies



This section contains policies about the programming around recreation and other community services

Policy Number	Change
PA-30	Updated to include evaluation and use more specific about why to solicit community feedback.
PA-31	Updated to include detail on responding to the community's needs in culturally-specific ways.

Stewardship Policies

Stewardship section is focused on caring for the city's parks and natural and recreational resources.

Policy Number	Change
PA-33	Added to support ecological management practices.
PA-35	Added to support tree canopy policies. (see policies CL-15 to CL-22)
PA-36	Added to support restoration opportunities.
PA-38	Updated to include climate change based on a recommendation in the CVA.
PA-39	Moved from Land Use element. Updated to focus on streetscapes.

Maintenance, Renovation and Redevelopment Policies

The policies in this section are focused on the care and maintenance of parks.

Policy Number	Change
PA-42	Added to direct the city to lead by example in the construction and renovation of buildings to have minimal negative impacts on the environment.
PA-45	Updated to prevent uses that are not in alignment with the intended or planned use and to better support resolution of property encroachments that can occur over time.



Neighborhoods



Community Feedback

Support

- Types of housing available
- Diversity of people in Bellevue
- Safety

Missing

- Crime prevention
- Walkability
- Equity definition



Neighborhood Core Needs Policies

These focus on the broad neighborhood needs across the city

Policy Number	Change
NH-2	Added to support middle housing, parks and Neighborhood Centers in all neighborhoods.
NH-3	Added climate-related hazards to consider for emergency preparation based on a recommendation from CVA
NH-4	Added to address new CPP policy, CPP-DP-8 about increasing equitable access to healthy food.
NH-6	Added to support initiatives to expand belonging in the city based on a recommendation from Centering Communities of Color community dialog.

Community Safety Policies

A new subsection focused on safety in many forms.

Policy Number	Change
NH-12	Added to support gun safety.
NH-13	Added to deter racism and racially-motivated hate crimes based on a recommendation from Centering Communities of Color community dialog.

Inclusive Neighborhood Identity Policies

The policies in this subsection aim to build community connections and collective identity in an inclusive way

Policy Number	Change
NH-14	Updated to include a more specific description of the character to be enhanced in Bellevue neighborhoods.

Neighborhood Area Planning Policies

Policies to guide the update of the subarea/neighborhood plans in Volume 2 of the Comprehensive Plan.

Policy Number	Change
NH-16	Updated to better reflect Neighborhood Area Plans' relationship to the Comprehensive Plan.



Climate & Environment



Community Feedback

Support

- Tree canopy
- Reducing GHG
- Responding to climate change

Missing

- More specifics & targets
- Transportation-related policies
- Requirements for PSE





Environmental Stewardship Policies

This subsection contains policies that focus broadly on environmental stewardship.

Policy Number	Change
CL-5	Updated to use more current and encompassing language and address the new CPP policy CPP-EN-2.
CL-7	Updated to include a standard climate accounting framework to measure GHG emissions and include a broader array of city activities.
CL-9	Added to address environmental disparities and the new CPP policy, CPP-EN-25.
CL-10	Added to support environmental education (moved from BelRed Subarea Plan).

Greenhouse Gas Emission Reduction Policies



Policies focused on the reduction of greenhouse gas emissions.

Policy Number	Change
CL-11	Added to support the transition to more sustainable energy sources.
CL-12	Updated to reflect new GHG emission reduction goals and CPP policy CPP-EN-27.
CL-13	Added to support the consideration of climate change, a recommendation from Climate Vulnerability Assessment.
CL-14	Added to continue to support the city leading by example.

Urban Forestry Policies

Policies focused on the health of trees and forest systems in the city.

Policy Number	Change
CL-17	Added to support tree health and tree canopy and CPP policy CPP-EN-32.
CL-18	
CL-19	
CL-20	Added to support tree health and tree canopy and CPP policy CPP-EN-11.
CL-22	
CL-21	Added to support the consideration of climate change on urban trees.

Climate Resiliency Policies

A new section with policies focused on responding to the impacts of climate change and minimizing Bellevue's contribution to it.

Policy Number	Change
CL-24	Added to support the conversion to electricity for buildings and vehicles.
CL-25	Added to prepare for impacts of climate change and extreme precipitation on stormwater.

Waste and Materials Management Policies



These policies are for the responsible disposal of waste and materials.

Policy Number	Change
CL-26	Updated to include a goal and reference the Environmental Stewardship Plan for actions.
CL-27	Updated to include a characterization of products to prioritize and support for circular economy programs.
CL-31	Added Environmental Stewardship Plan action W.2.1.

Water Resources Policies

This subsection is about managing the city's water resources to be healthy and clean into the future.

Policy Number	Change
CL-32	Updated to add consideration for ecosystem services and support CPP policy CPP-EN-18.

Geo Hazards Policies

Policies in this section are focused on safety from geo hazards like earthquakes.

Policy Number	Change
CL-43	Updated to include city approvals for vegetation removal in connection with development projects.
CL-51	Updated to be consistent with the Growth Management Act and geologic hazard areas critical areas protection.
CL-52	
CL-57	Added to include climate change impacts related to geologic hazards.



Sustainable Development Policies

The subsection was broadened to focus on all development activities that contribute to sustainability.

Policy Number	Change
CL-61	Added policy based on Environmental Stewardship Plan Action N.3.1.
CL-64	Updated to include climate resilience based on a recommendation in the Climate Vulnerability Assessment.
CL-65	Added to support greenhouse gas reduction targets (see CL-11).
CL-66	
CL-67	
CL-68	



Air Quality Policies

Policies focused on ensuring healthy air.

Policy Number	Change
CL-69	Updated to include climate change.

Fish and Wildlife Habitat Policies

This subsection contains policies that support wildlife and their habitats in Bellevue

Policy Number	Change
CL-77	Updated to include climate resilience as a consideration.
CL-81	Updated to combine CL-81 and (old number (EN-64) and respond to climate change impacts.
CL-86	Updated to include climate resiliency as a consideration.
CL-88	
CL-90	Updated to improve habitat quality based on a recommendation in the Climate Vulnerability Assessment.

Critical Areas Policies

Policies that guide planning for critical areas.

Policy Number	Change
CL-99	Updated to align with Growth Management Act and specify geologically hazardous areas protection.
CL-100	Added to support a target of no net loss of ecosystem based on a recommendation in the Climate Vulnerability Assessment.
CL-109	Added to support evaluation of ecosystem services during development.

Noise Policies

Policies to manage noise in the city.

Policy Number	Change
CL-113	Updated to include air pollution based on a mitigation measure in DEIS.



Next Steps

Review the three elements again at final draft stage

- Address suggested changes
- Recommend changes based on community feedback

