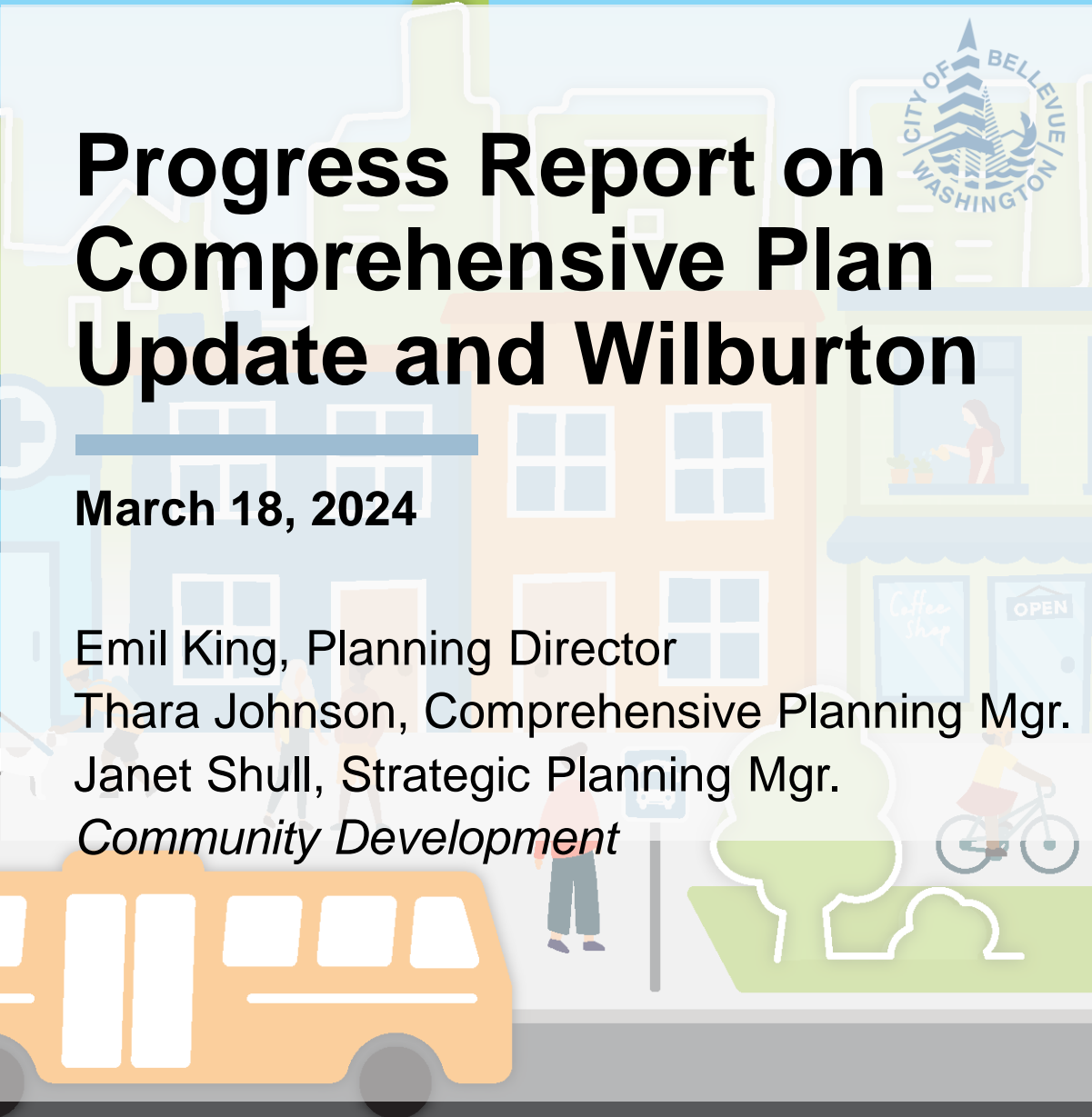




# Progress Report on Comprehensive Plan Update and Wilburton

March 18, 2024

Emil King, Planning Director  
Thara Johnson, Comprehensive Planning Mgr.  
Janet Shull, Strategic Planning Mgr.  
*Community Development*





# Information Only

Progress report on  
Comprehensive Plan Periodic  
Update and Wilburton Vision  
Implementation.





# Agenda

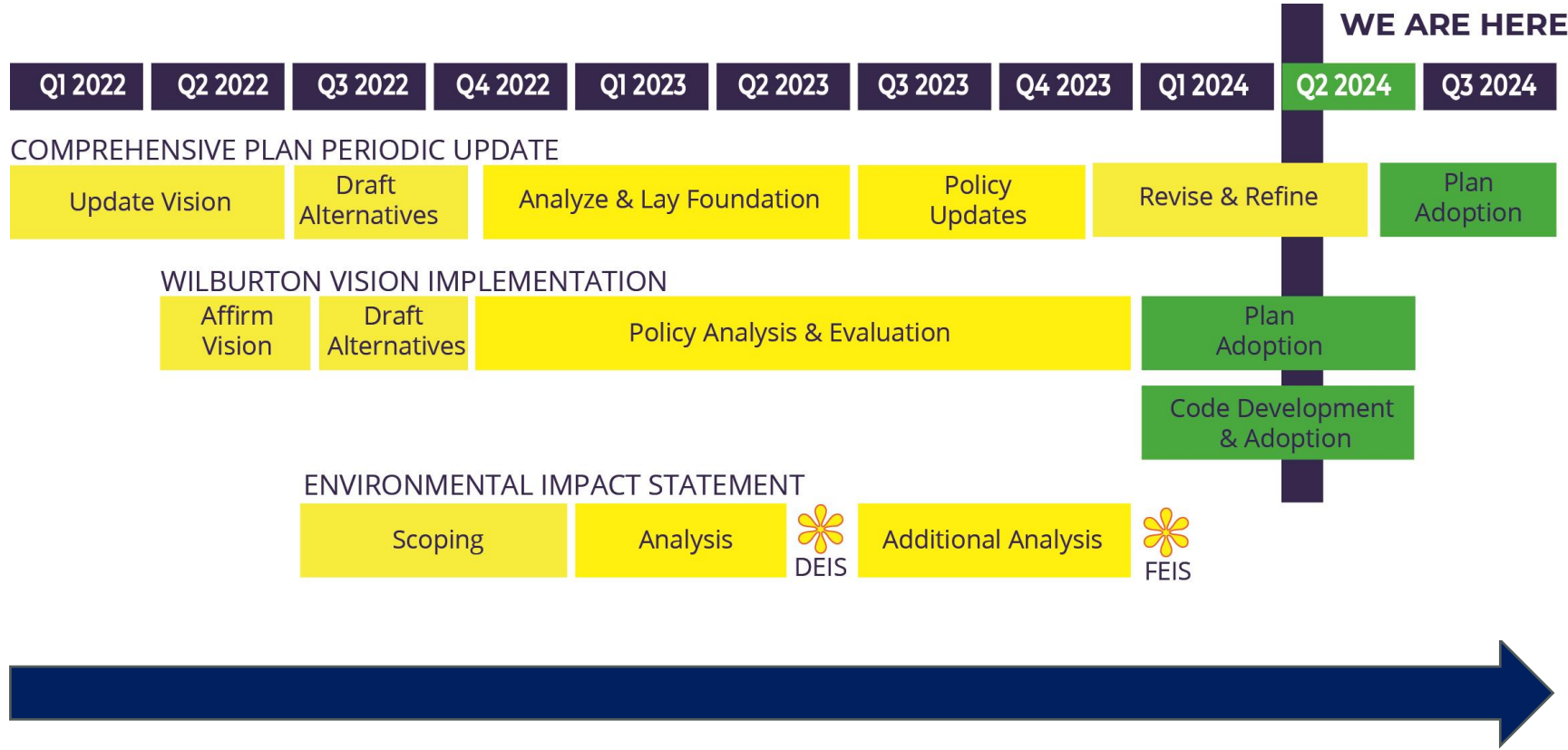
---

1. Planning Framework
2. Schedule Overview
3. Progress on Comprehensive Plan
4. Progress on Wilburton Vision Implementation





# Project Timeline



**Continuous Community Engagement**



# Planning Framework

- **Council Vision**
- State and regional requirements
- EIS, reports and analysis
- Community input and engagement

**GMA/Other State Leg.  
Countywide Policies  
Multicounty Policies**

- **EIS**
- **Racially Disparate Impacts**
- **Economic Analysis**
- **Climate Vulnerability**
- **Air Quality Report**

- **Surveys & Questionnaires**
- **Data Deep Dives**
- **Open Houses**
- **Stakeholder meetings**



# Comprehensive Plan Update

---





# Planning Commission Review of Draft Plan Elements

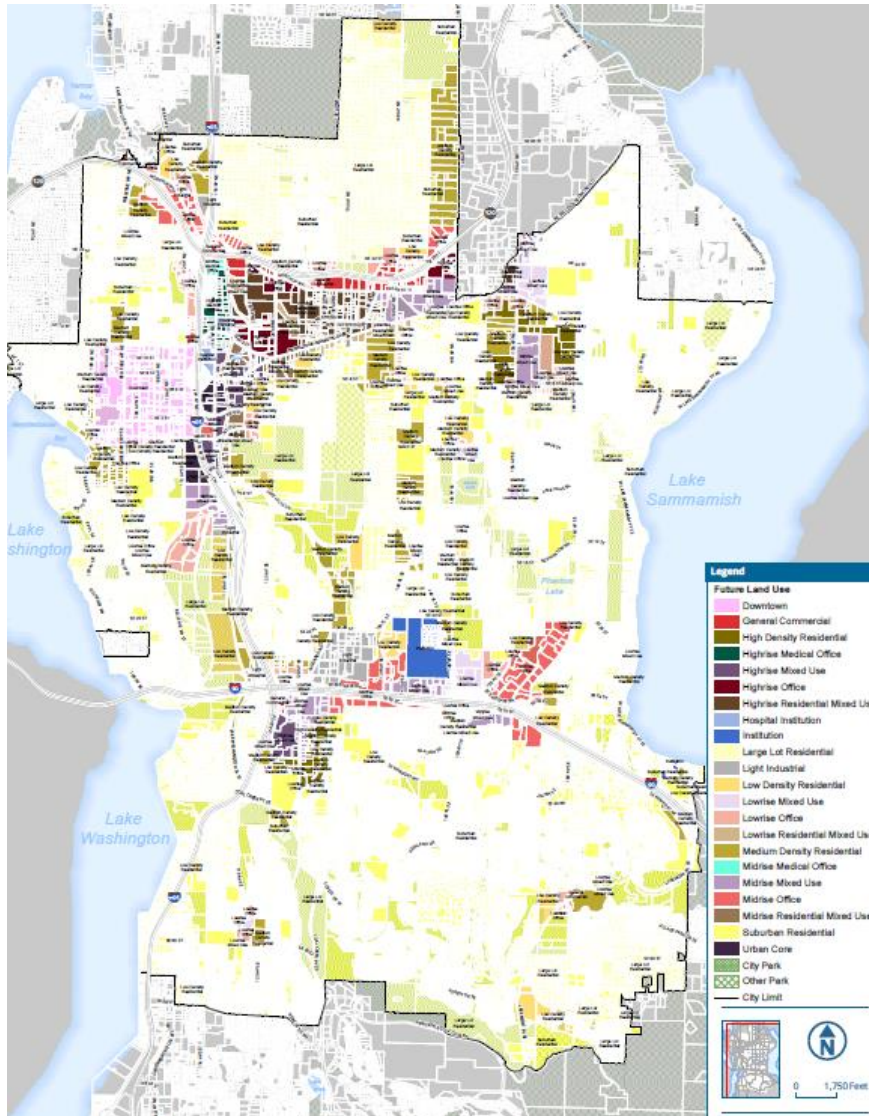
*Incorporates work from other boards/commissions*

Date	Elements
Jan 24	Community Engagement; Economic Development
Feb 14	Land Use & Future Land Use Designations
Feb 28	Future Land Use Map
March 13	Neighborhoods; Climate & Environment; Parks
March 27	Capital Facilities; Utilities; Urban Design & the Arts
April 3	Housing; Human Services
April 10	Transportation
May 8 & 22	Final Comprehensive Plan Draft
June 12 & 26	Public Hearings on Comprehensive Plan Update
July 10	Recommendation on Comprehensive Plan Update



*Tentative dates and topics*

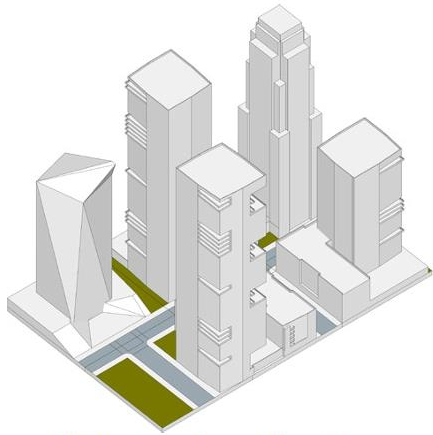
# Future Land Use Map



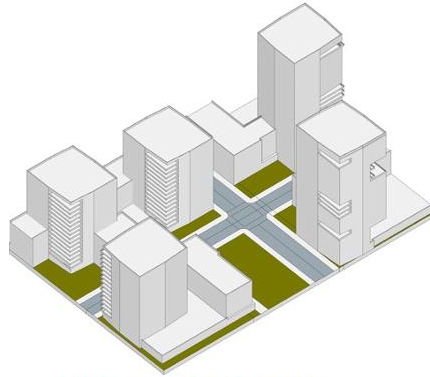
- FEIS Alternative basis for Future Land Use Map
- Broadened Comp Plan categories, more flexibility
- Commission review ongoing, part of final recommendation to Council



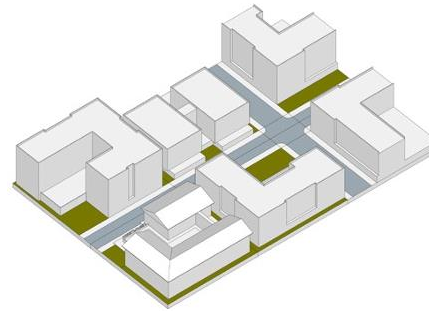
# Future Land Use Designations



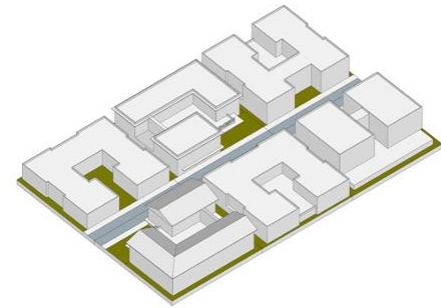
Highest scale and density



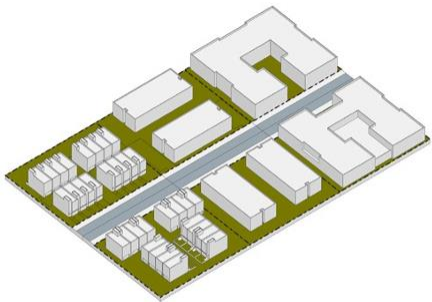
High scale and density



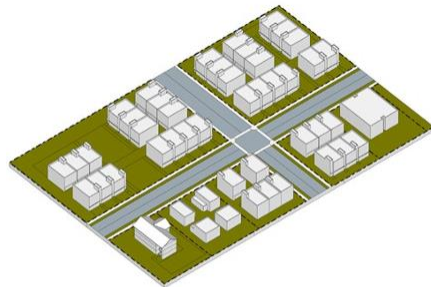
Middle scale and density



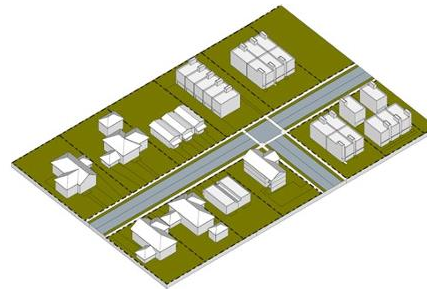
Low scale and density



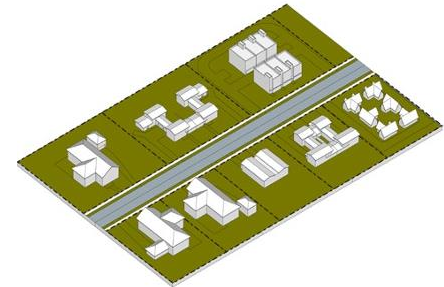
Middle urban residential scale and density



Lower urban residential scale and density



Typical suburban scale and density



Spacious scale and density

# Policy Issues

---

- Amount and Location of Growth
- Affordable Housing Options
- Middle Housing Implementation
- Transportation Mobility
- Air Quality Considerations
- Tree Canopy
- Climate and Environment Policies



# Comprehensive Plan Update Engagement

- Over 7,000 engaged in process to date
- 65 events over two years. 45% targeted for diverse groups, low-income, or youth.
- Detailed policy review: Jan 15 – Feb 27
  - 12 online questionnaires
  - 1 in-person open house
  - BDAN Community Conversation
  - Youth workshops





# Wilburton Update

---



# Wilburton: Policy Engagement

Summer-Fall 2023



Youth engagement



In-person Open House  
+ Online questionnaire

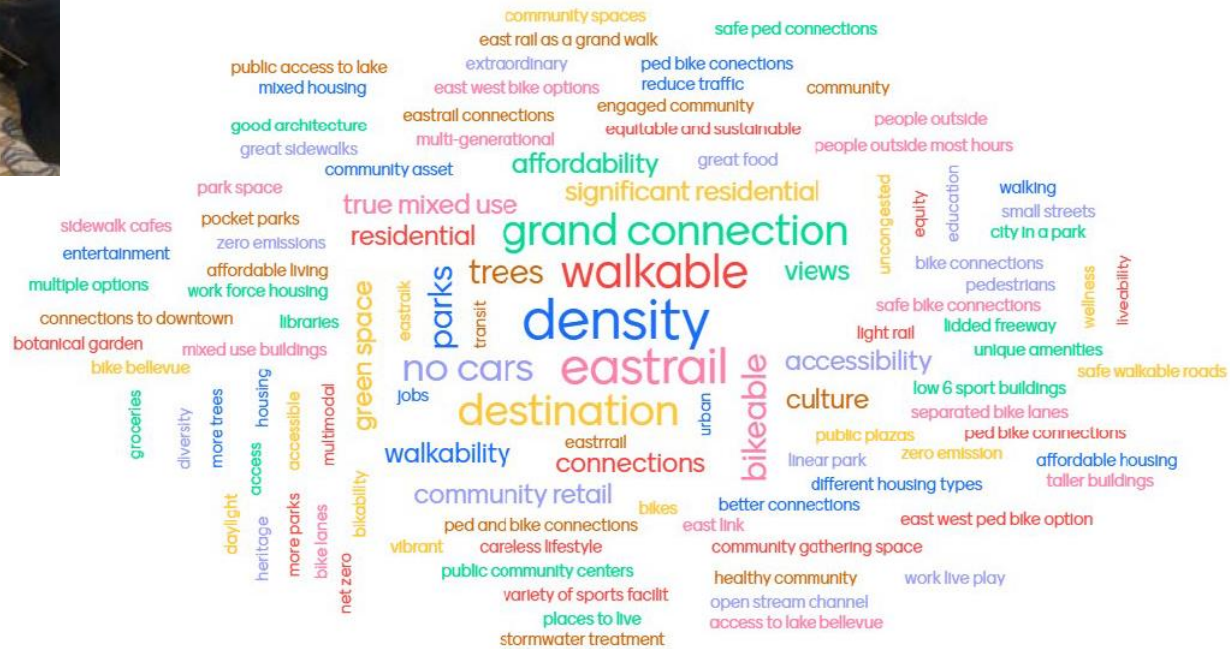


Pop Ups at events and in community

# Wilburton: Sustainable District Opportunity



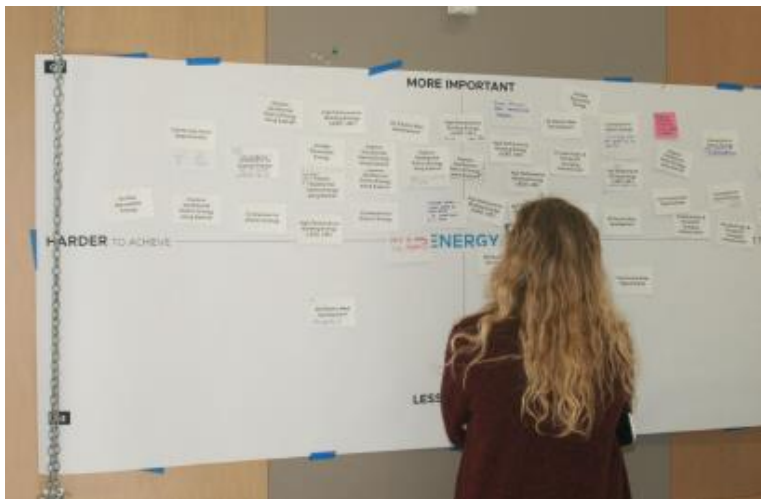
## December 14 Workshop: Sustainability ideas



# Wilburton: Sustainable District Opportunity



**February 14 Workshop:**  
Prioritization of sustainability  
and urban design  
opportunities




**Sustainable District Next Steps:**

- Incorporate sustainability elements into draft LUCA
- Prioritize overall strategies (e.g. district energy & increasing tree canopy)



# Wilburton: Next Steps

<b>Date</b>	<b>Planning Commission Schedule*</b> <i>Incorporates work from other boards/commissions</i>
Feb 28	Land Use Designations & Future Land Use Map 
Mar 27	Transportation, Streets, Blocks
April 3	Site Organization, Buildings, Design **
April 10	Land Use, Incentives, Housing
May 1	Public Hearings **
May/June	Council study sessions and action

\* Schedule as of 3/18/24    \*\* Additional meeting





# Information Only

Progress report on  
Comprehensive Plan Periodic  
Update and Wilburton Vision  
Implementation.

