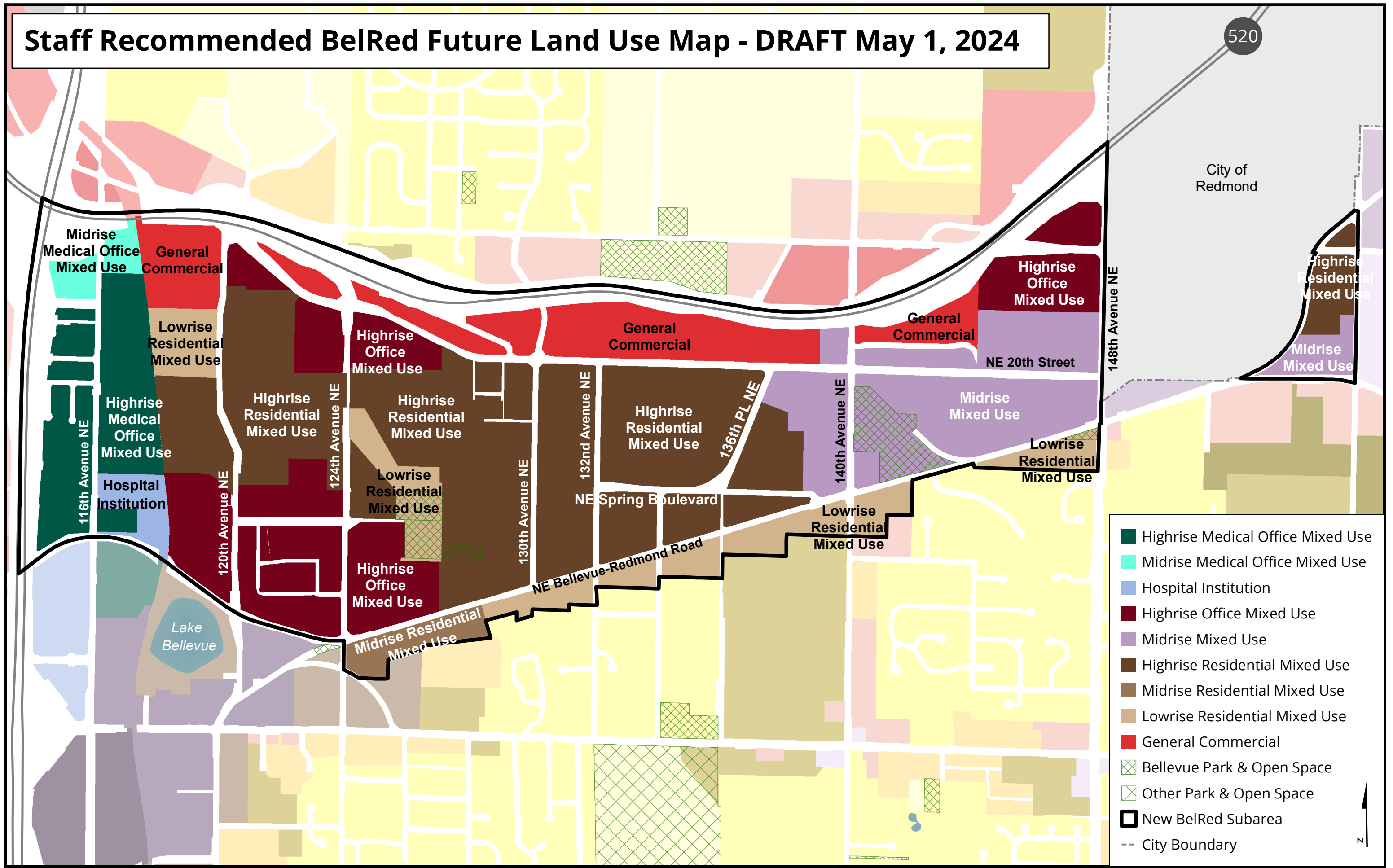


Staff Recommended BelRed Future Land Use Map - DRAFT May 1, 2024



City of Redmond

520

Highrise Residential Mixed Use
Midrise Mixed Use

Highrise Office Mixed Use

General Commercial

General Commercial

Highrise Office Mixed Use

General Commercial

Lowrise Residential Mixed Use

Highrise Medical Office Mixed Use

Hospital Institution

Highrise Residential Mixed Use

Highrise Residential Mixed Use

Highrise Residential Mixed Use

Midrise Mixed Use

Lowrise Residential Mixed Use

Lowrise Residential Mixed Use

NE Spring Boulevard

Lowrise Residential Mixed Use

Highrise Office Mixed Use
Midrise Residential Mixed Use

Lake Bellevue

- Highrise Medical Office Mixed Use
- Midrise Medical Office Mixed Use
- Hospital Institution
- Highrise Office Mixed Use
- Midrise Mixed Use
- Highrise Residential Mixed Use
- Midrise Residential Mixed Use
- Lowrise Residential Mixed Use
- General Commercial
- Bellevue Park & Open Space
- Other Park & Open Space
- New BelRed Subarea
- City Boundary

0 0.25 0.5 1 1.5 2 Miles

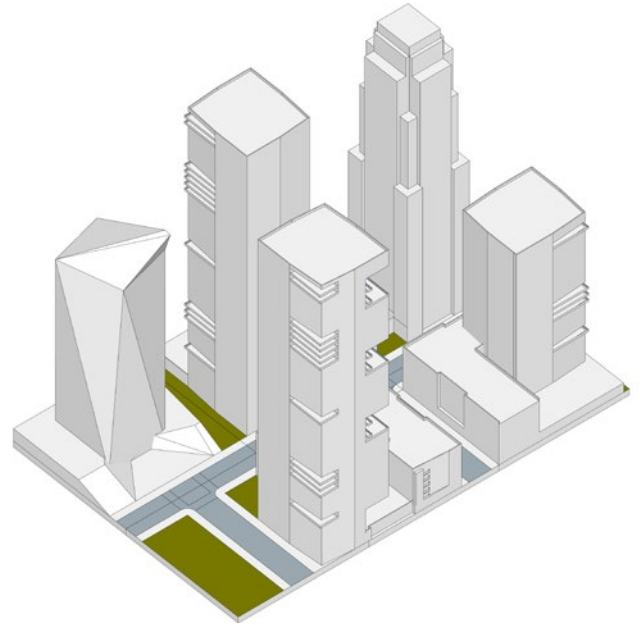


Future Land Use Map Key

MIXED USE

Downtown

The purpose is to provide an area for a mix of housing, retail, service, office and complementary uses at the **highest scale and density** (see illustration). The scale and density may be reduced by overlay districts.



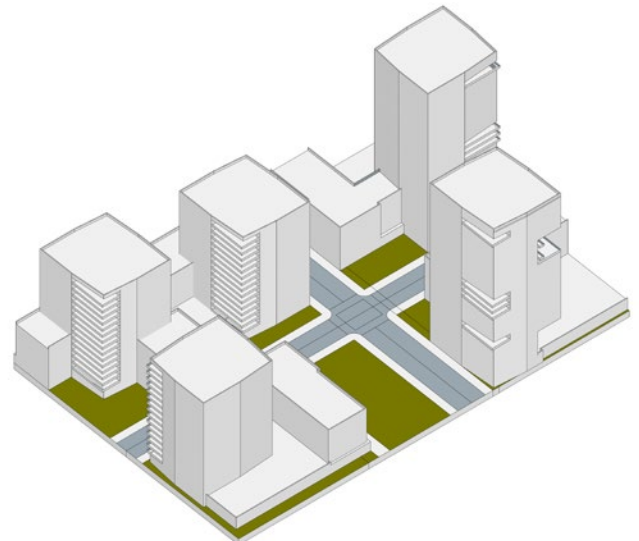
Highest scale and density

Urban Core

The purpose is to provide an area for a mix of housing, retail, service, office and complementary uses at the **highest scale and density** (see illustration), close to Downtown and light rail stations.

Highrise Mixed Use

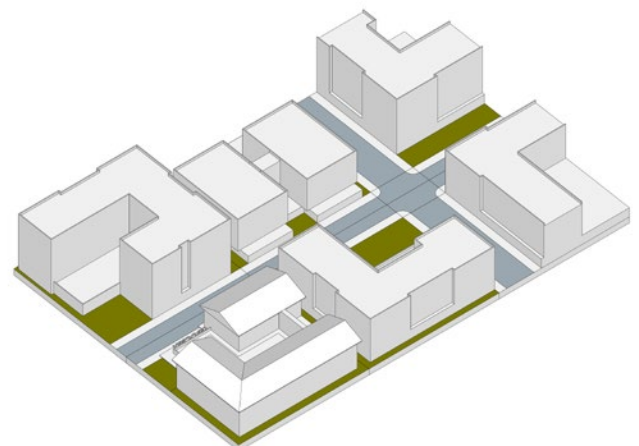
The purpose is to provide an area for a mix of housing, retail, service, office and complementary uses at a **high scale and density** (see illustration).



High scale and density

Midrise Mixed Use

The purpose is to provide an area for a mix of housing, retail, service, office and complementary uses at a **middle scale and density** (see illustration).



Middle scale and density

Lowrise Mixed Use

The purpose is to provide an area for a mix of housing, retail, service, office and complementary uses at a **low scale and density** (see illustration).

Highrise Office Mixed Use

The purpose is to provide a mix of office, housing, retail, service and complementary uses with a focus on office uses at **high scale and density** (see illustration).

Midrise Office Mixed Use
 The purpose is to provide a mix of housing, retail, service, office and complementary uses with a focus on office uses at **middle scale and density** (see illustration).

Lowrise Office Mixed Use
 The purpose is to provide a mix of office, housing, retail, service and complementary uses with a focus on office uses at **low scale and density** (see illustration).

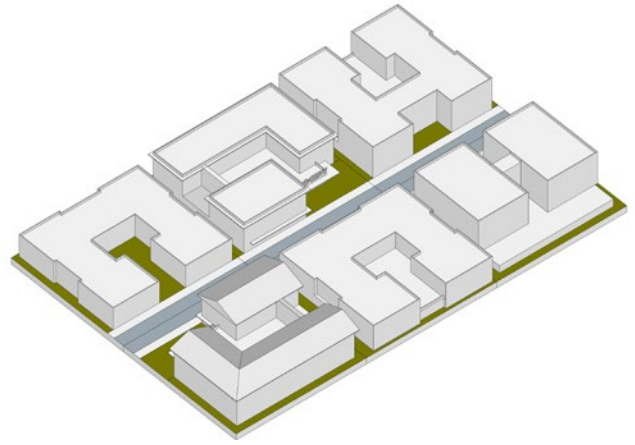
Highrise Medical Office Mixed Use
 The purpose is to provide a mix of laboratories, office, housing, retail, service, and complementary uses with a focus on medical uses at **high scale and density** (see illustration).

Midrise Medical Office Mixed Use
 The purpose is to provide a mix of laboratories, office, housing, retail, service and complementary uses with a focus on medical uses at a **middle scale and density** (see illustration).

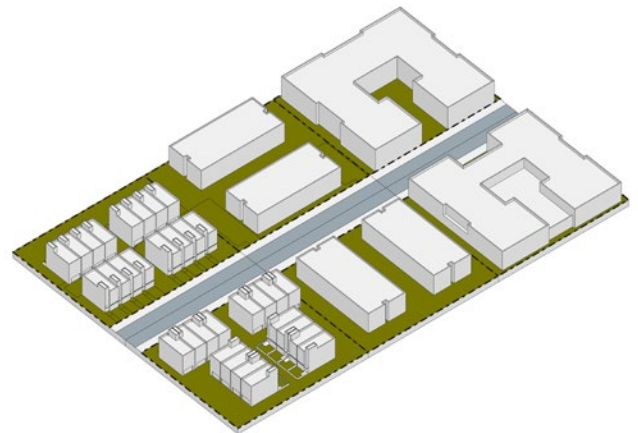
Highrise Residential Mixed Use
 The purpose is to provide primarily housing with a mix of retail, service, office and uses that compliment with a focus on housing at a **high scale and density** (see illustration).

Midrise Residential Mixed Use
 The purpose is to provide primarily housing with a mix of retail, service, office and uses that compliment with a focus on housing at **middle scale and density** (see illustration).

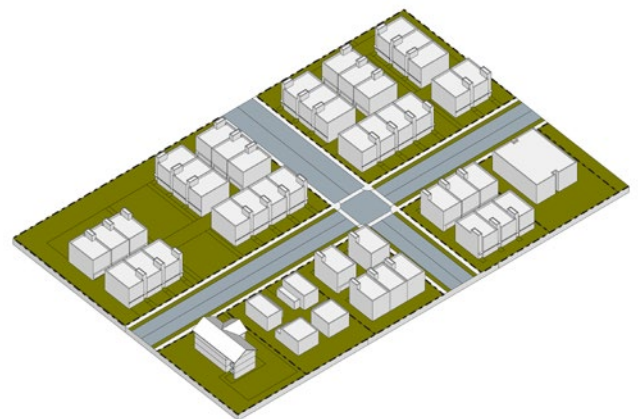
Lowrise Residential Mixed Use
 The purpose is to provide primarily housing with a mix of retail, service, office and uses that complement with a focus on housing at **low scale and density** (see illustration).



Low scale and density



Middle urban residential scale and density



Lower urban residential scale and density

RESIDENTIAL

High Density Residential

The purpose is to provide for residential and complementary uses at a **low scale and density** (see illustration), similar to lowrise mixed use.

Medium Density Residential

The purpose is to provide for residential and complementary uses at a **middle urban residential scale and density** (see illustration).

Low Density Residential

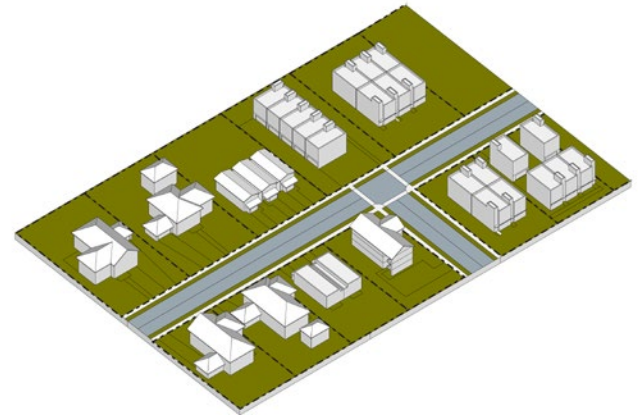
The purpose is to provide for residential and complementary uses at a **lower urban residential scale and density** (see illustration).

Suburban Residential

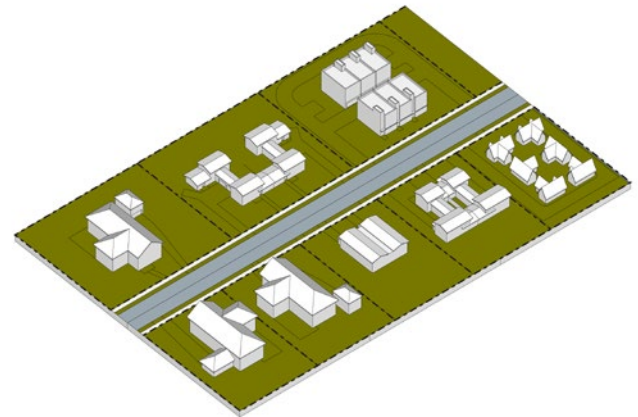
The purpose is to provide for residential and complementary uses at a **typical suburban density** (see illustration).

Large Lot Residential

The purpose is to provide for residential and complementary uses on large lots at a **spacious scale and density** (see illustration).



Typical suburban scale and density



Spacious scale and density

OTHER USES

General Commercial

The purpose of this district is to provide primarily office, retail and service uses.

Light Industrial

The purpose is to provide light industrial uses.

Institutional

The purpose of this district is to provide for institutional uses like colleges.

Hospital Institutions

The purpose is to provide Hospital uses and building styles.