



BELRED LOOK FORWARD ***BelRed Subarea Plan*** ***Full Draft Review***

May 22, 2024

Emil King, AICP, Planning Director

Gwen Rousseau, AICP, Senior Planner

Community Development



MAKERS OBERN

Direction Requested

Review draft BelRed Subarea Plan policies

Provide direction on policies and direct staff to schedule a public hearing.





Agenda

- Background
- Policy discussion
- Next Steps



BelRed Look Forward

What?

- A planning process to update both policies and land use designations.

When?

- Part of the Comprehensive Plan Periodic Update launched in February 2022.
- Adoption by Council anticipated in Q3 2024.

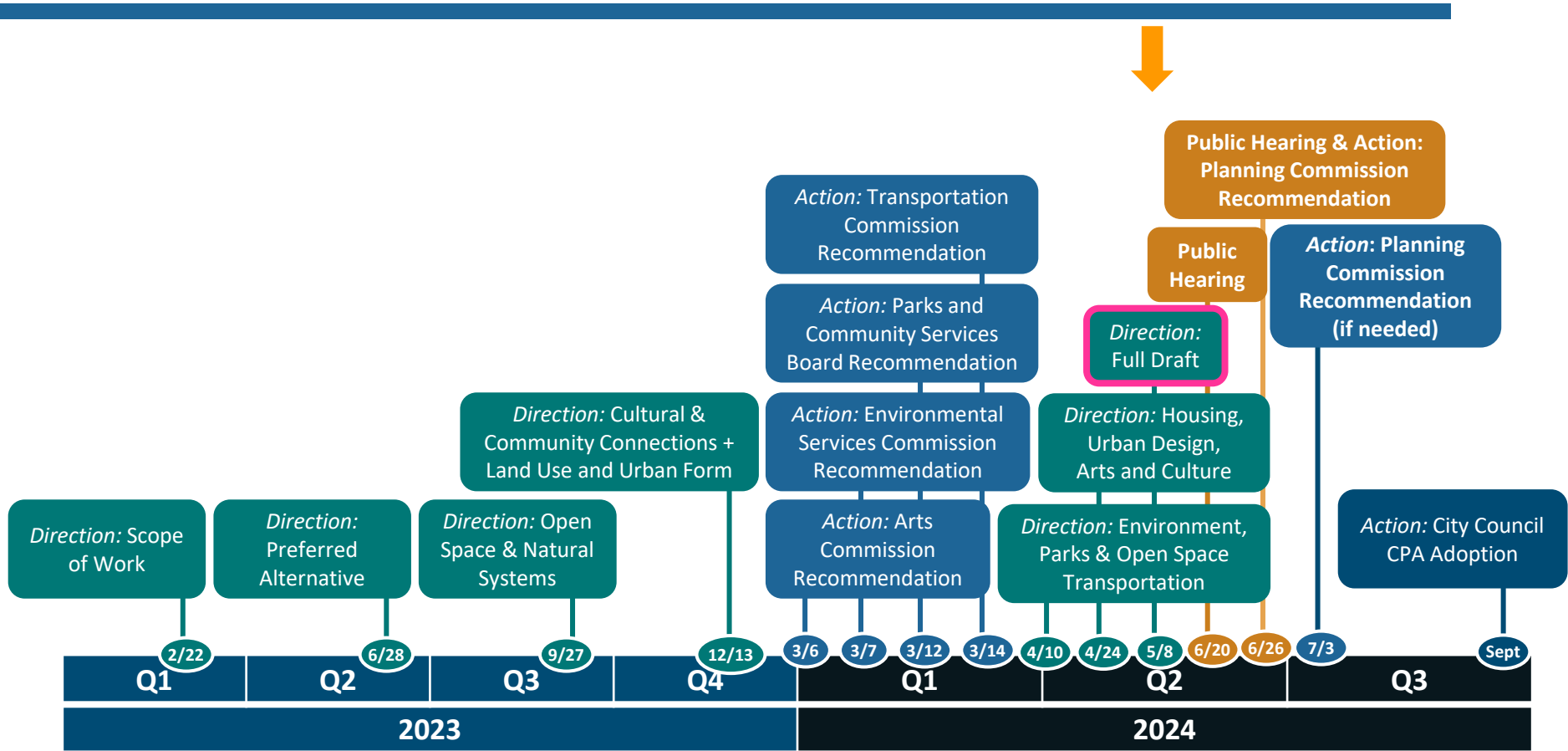
Why?

- **To reflect new information.**
- **To strengthen and clarify implementation strategies.**
- To increase capacity for housing and job growth.



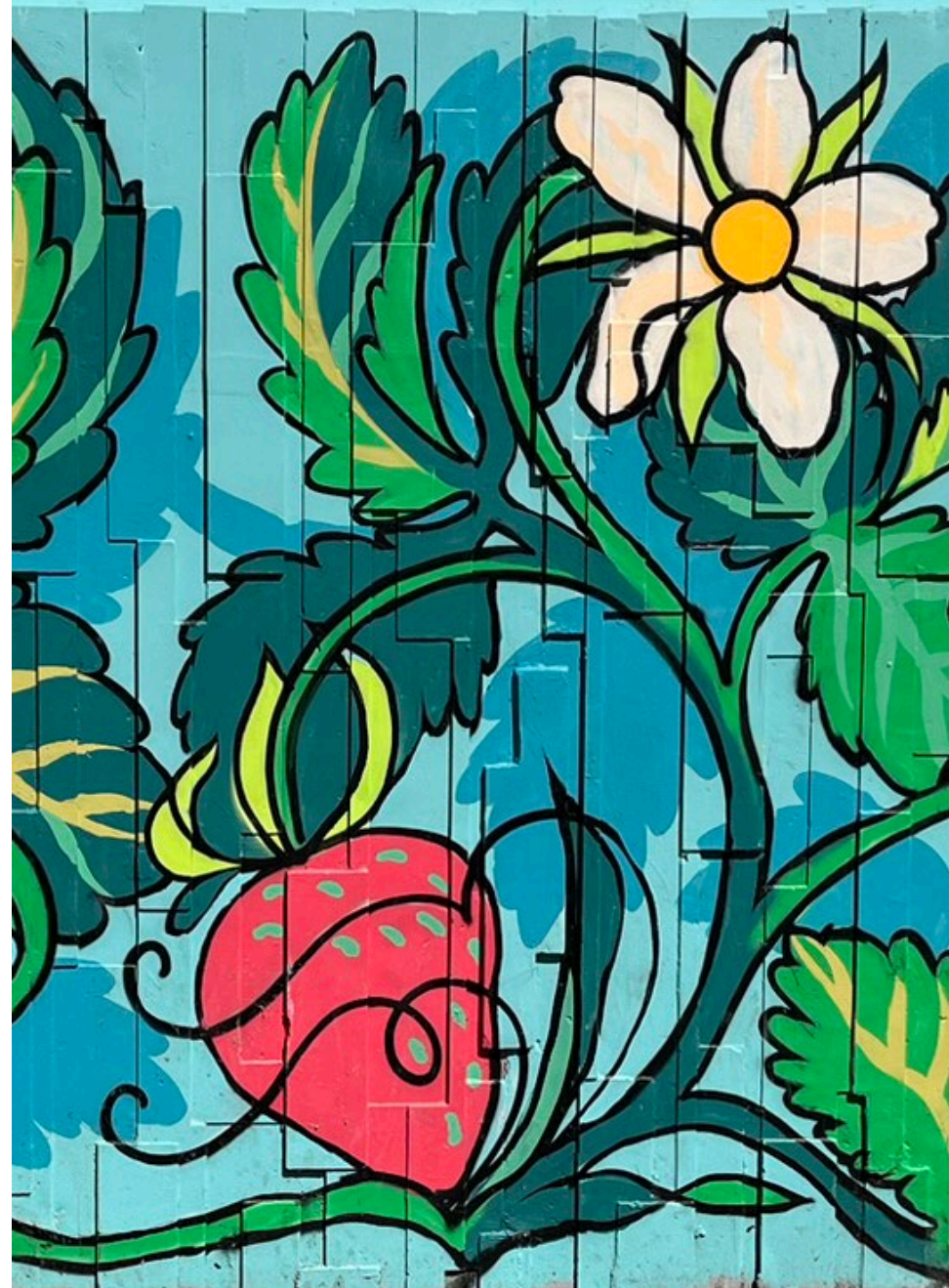
Timeline

WE ARE HERE



Supporting Materials

- A. Policy Changes from Planning Commission Review
- B. Recommended Policy Amendments (SU)
- C. Complete Draft Subarea Plan
- D. Comprehensive Plan Glossary
- E. Policies Supporting Stream Restoration and Rehabilitation



Plan Sections

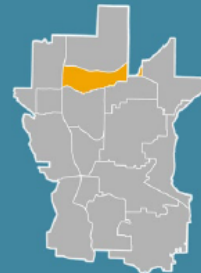
1. Overview / Vision
2. General
3. Land Use
4. Urban Design
5. Environment
6. Parks & Open Space
7. Housing
8. Arts, Culture & Creativity
9. Transportation
10. Implementation



BELRED

WHAT YOU WILL FIND IN THIS PLAN

- Overview
- BelRed Vision
- Goals and policies
- Project lists and map



GOAL

To continue developing a sustainable urban development pattern that dramatically reshapes the future of the BelRed Subarea, while allowing the area to transition gracefully from its past.

OVERVIEW

Connected via light rail to Downtown Bellevue in the southwest and to Redmond's Overlake Village and the Microsoft Campus in the northeast, BelRed is a geographically expansive area with diverse natural and built environments covering over 860 acres. The area has undergone several transformations in its past, and it is currently undergoing its most recent transformation from a light industrial area with large lots and acres of surface parking into a Countywide Growth Center with a collection of vibrant, diverse, and walkable neighborhood districts oriented around light rail.



Policy Modifications



Policy Modifications

General

- Added language to provide more comprehensive direction.

Land Use

- Restructured policy to provide clearer direction.

Neighborhood Districts

- Replaced vague language with more concrete direction.
- Specified office uses allowed within the medical mixed use district.

Urban Design and Parks and Open Space

- Incorporated additional concepts recommended.



Policy Modifications Continued

Housing

- Added language to provide more comprehensive direction.

Transportation and Implementation

- Replaced subjective terms such as community character with more objective terminology.
- Added language to provide more comprehensive direction.
- Clarified direction for implementation.



Direction Requested

Review draft BelRed Subarea Plan policies

Provide direction on policies and direct staff to schedule a public hearing.



Next Steps

June 20

- Public Hearing and Recommendation with option to extend discussion to June 26.

