

A colorful illustration of a town scene. In the foreground, a woman in a blue shirt and white skirt walks a young girl in a blue dress. A red car is parked on the street. In the background, there are blue houses, a white train on a track, a cyclist, a person walking, and a blue bus. The scene is set against a backdrop of light blue hills and a clear sky.

Wilburton Vision Implementation

**2024 Proposed Comprehensive Plan
Amendment (CPA)**

**City Council Ordinance Action
July 23, 2024**

Emil King
Janet Shull
Community Development



Action

Consider adopting the
Wilburton Vision
Implementation
Comprehensive Plan
Amendment Ordinance



A Framework for the Future

Cultural & Community Connections



Active, vibrant identity



Unique mix of businesses



Multimodal connections



Trail- and transit-oriented

Future Land Use



Diverse and affordable housing



Range of implementation tools

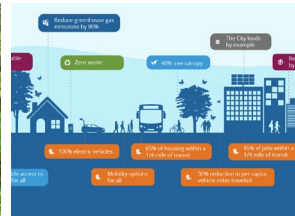
Open Space & Natural Systems



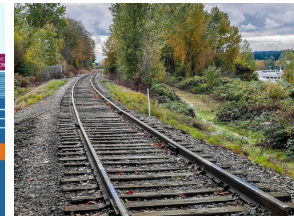
Urban park system



Enhance natural features



Sustainable district




Eastrail linear park





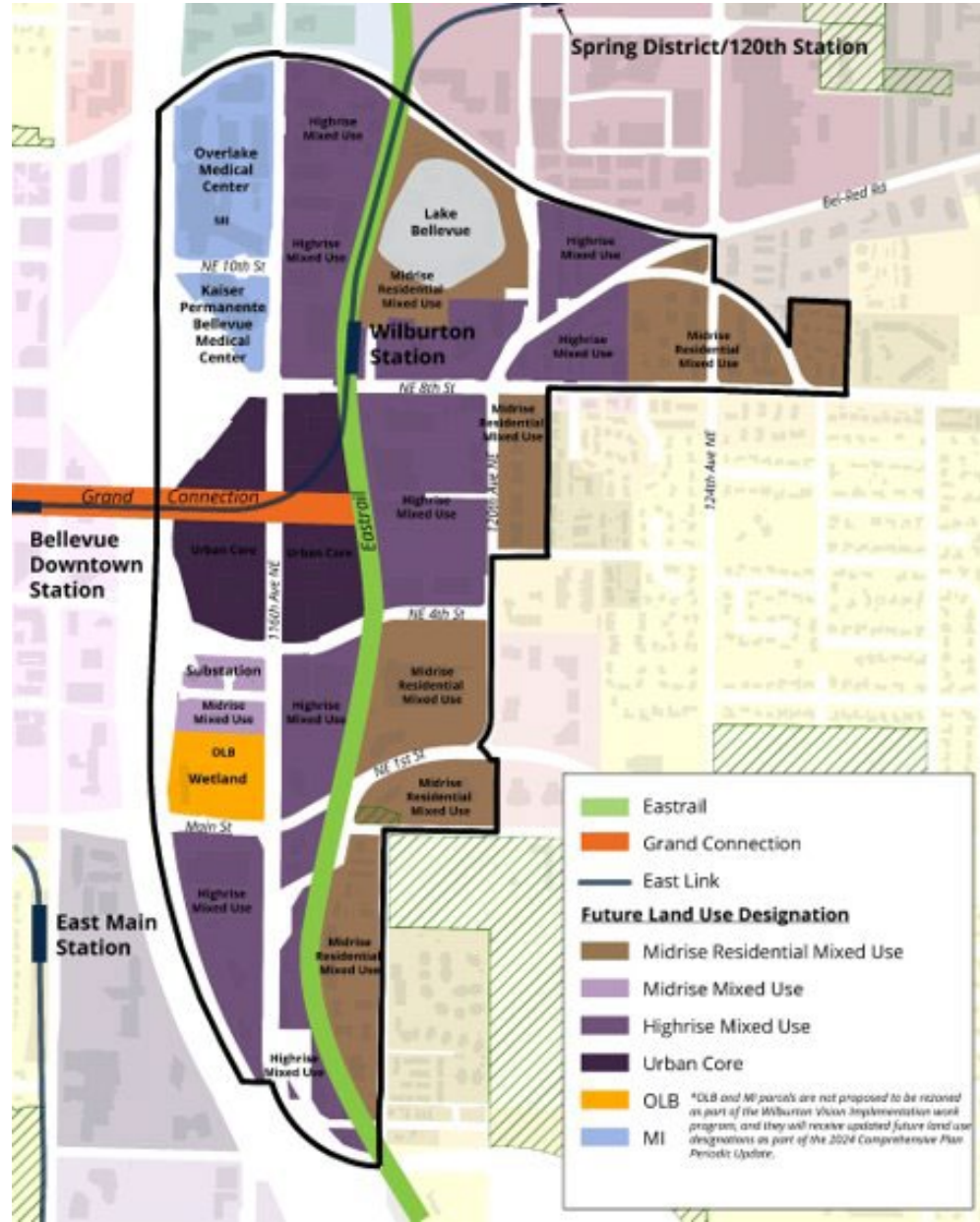
Future Land Use Map

-  Eastrail
-  Grand Connection
-  East Link

Future Land Use Designation

-  Midrise Residential Mixed Use
-  Midrise Mixed Use
-  Highrise Mixed Use
-  Urban Core

-  OLB **OLB and MI parcels are not proposed to be rezoned as part of the Wilburton Vision Implementation work program, and they will receive updated future land designations as part of the 2024 Comprehensive Plan Periodic Update.*
-  MI **OLB and MI parcels are not proposed to be rezoned as part of the Wilburton Vision Implementation work program, and they will receive updated future land designations as part of the 2024 Comprehensive Plan Periodic Update.*




-  Eastrail
-  Grand Connection
-  East Link

Future Land Use Designation

-  Midrise Residential Mixed Use
-  Midrise Mixed Use
-  Highrise Mixed Use
-  Urban Core
-  OLB **OLB and MI parcels are not proposed to be rezoned as part of the Wilburton Vision Implementation work program, and they will receive updated future land designations as part of the 2024 Comprehensive Plan Periodic Update.*
-  MI **OLB and MI parcels are not proposed to be rezoned as part of the Wilburton Vision Implementation work program, and they will receive updated future land designations as part of the 2024 Comprehensive Plan Periodic Update.*

Policy Guidance from CPA

WILBURTON/N.E. 8TH STREET →



WILBURTON/N.E. 8TH STREET

WHAT YOU WILL FIND IN THIS PLAN

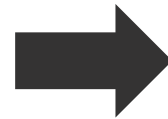
The community Overview, Goals, and Policies for Wilburton/N.E. 8th Street including the 2024 update adding the Vision, Goals, and Policies for the Wilburton Transit-Oriented Development (TOD) area.

The Subarea Plan was recently updated to address policies pertaining to the Wilburton TOD area. Updates to the full Subarea Plan will be addressed as part of the neighborhood area planning process.

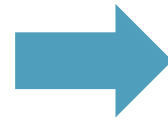
GOAL

- To distinguish residential, recreational, open space, commercial, and mixed-use areas from one another.
- To protect and enhance natural systems and open spaces.
- To improve active transportation connections, transit accessibility, and attractiveness of commercial and mixed-use areas for community members.
- To support higher-density mixed use development in the Wilburton Transit-Oriented Development (TOD) area that complements Downtown, provides new housing and job opportunities, and provides convenient access to transit, amenities, and services for the adjacent neighborhoods.
- To provide for a transition in scale and use between the Wilburton TOD area and adjacent residential areas.

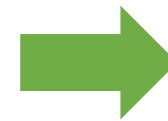
CITY OF BELLEVUE COMPREHENSIVE PLAN - WILBURTON/N.E. 8TH STREET - PAGE 281



Land Use Code Amendments



Affordable Housing Approach



Sustainable District Framework



Multimodal Access and Walkability

provides guiding framework for

A Vision Shaped by Community





Action

Consider adopting the
Wilburton Vision
Implementation
Comprehensive Plan
Amendment Ordinance

