

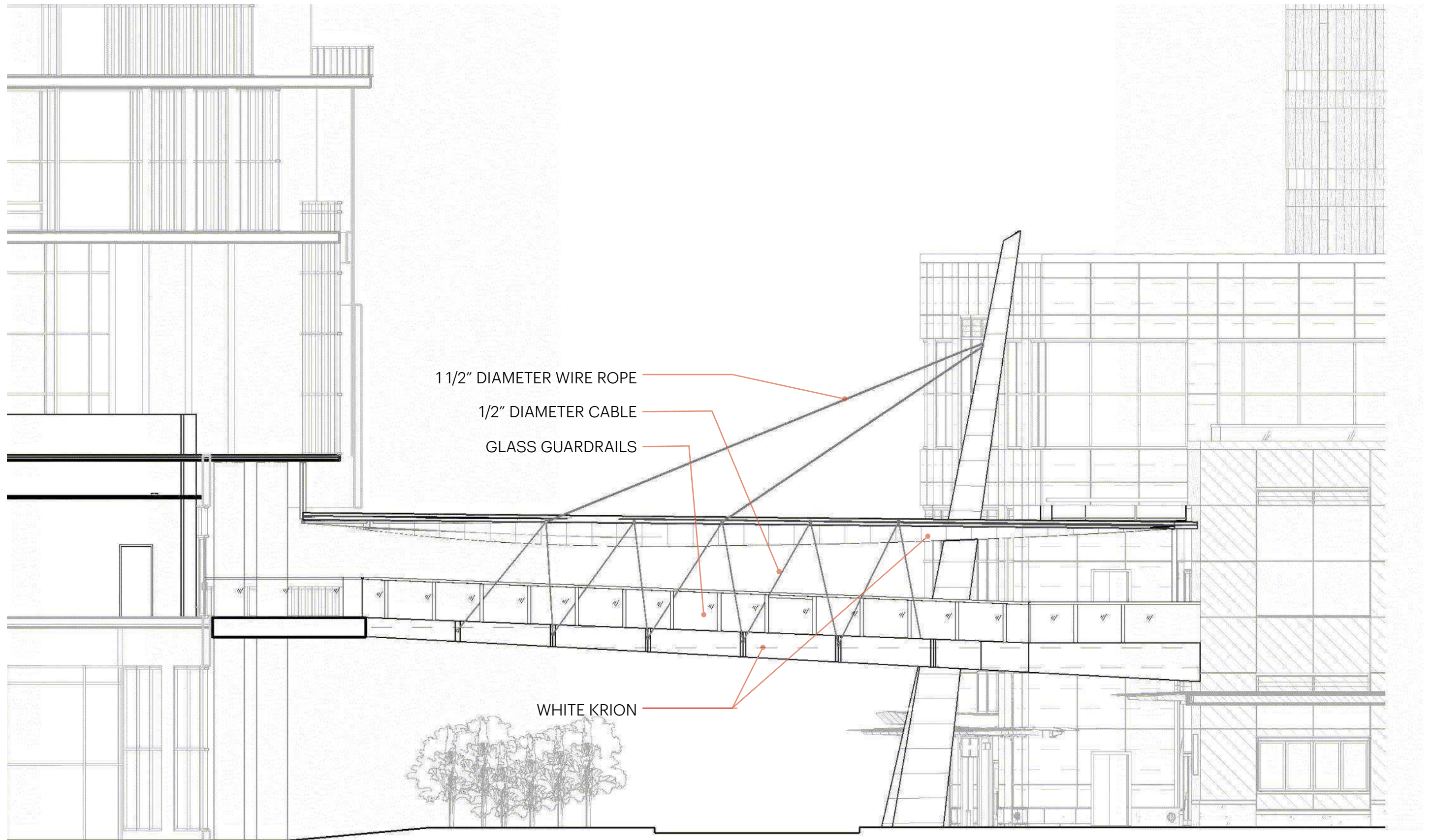


Lincoln Square Expansion – Pedestrian Corridor Gateway Plaza

18 April 2016

At the Western end of 6th Street, the *Lincoln Square Plaza and Bridge* will create a new gateway to Bellevue’s Pedestrian Corridor. The proposed improvement aims to create an urban plaza within the “Street as Plaza” and enhance and expand the primary and secondary paths through the existing Bellevue Way Major Public Open Space, running along 6th street and bounded by Bellevue Way at the West and 106th Avenue on the East. The new urban plaza will extend from the East face of the Bellevue Art Museum and encompass the intersection between 6th Street and 106th Avenue, while the bridge will span spring from the Lincoln Square Expansion on the South side and reach out to the Westin on the North side.

The primary paths through the Bellevue Way Major Public Open Space (MPOS) are currently well used from midday through to the evening. The proposed improvement to the plaza would break up the steep grade along these pathways, using low planter walls and vegetation to create pedestrian-friendly niches. The niches would offer a variety of seating opportunities for groups and activities of different sizes. Pedestrians would be invited to linger comfortably in the space and feel connected with the general hum of life throughout plaza, including the adjoining developments.



Lincoln Square - 6th Street

WEST ELEVATION

ARCHITECT
HKS ARCHITECTS, INC.
10880 WILSHIRE BLVD., SUITE 1850
LOS ANGELES, CA 90024

LANDSCAPE ARCHITECT
BRUMBAUGH & ASSOCIATES
600 NORTH STREET, SUITE 102
SEATTLE, WA 98103

STRUCTURAL ENGINEER
KPFF
1601 FIFTH AVENUE, SUITE 1600
SEATTLE, WA 98101

CIVIL ENGINEER
COUGHLIN PORTER LUNDEEN
801 SECOND AVENUE, SUITE 900
SEATTLE, WA 98104

LIGHTING DESIGNER
CANDELA
4100 194TH STREET SW, SUITE 400
LYNNWOOD, WA 98036

**LINCOLN SQUARE EXPANSION
PLAZA + SKY BRIDGE**
BELLEVUE, WASHINGTON

OWNER
KEMPER DEVELOPMENT COMPANY
575 BELLEVUE SQUARE
BELLEVUE, WA 98004

10888 REGISTERED
ARCHITECT
Scott B. Hunter
SCOTT B. HUNTER
STATE OF WASHINGTON

KEY PLAN

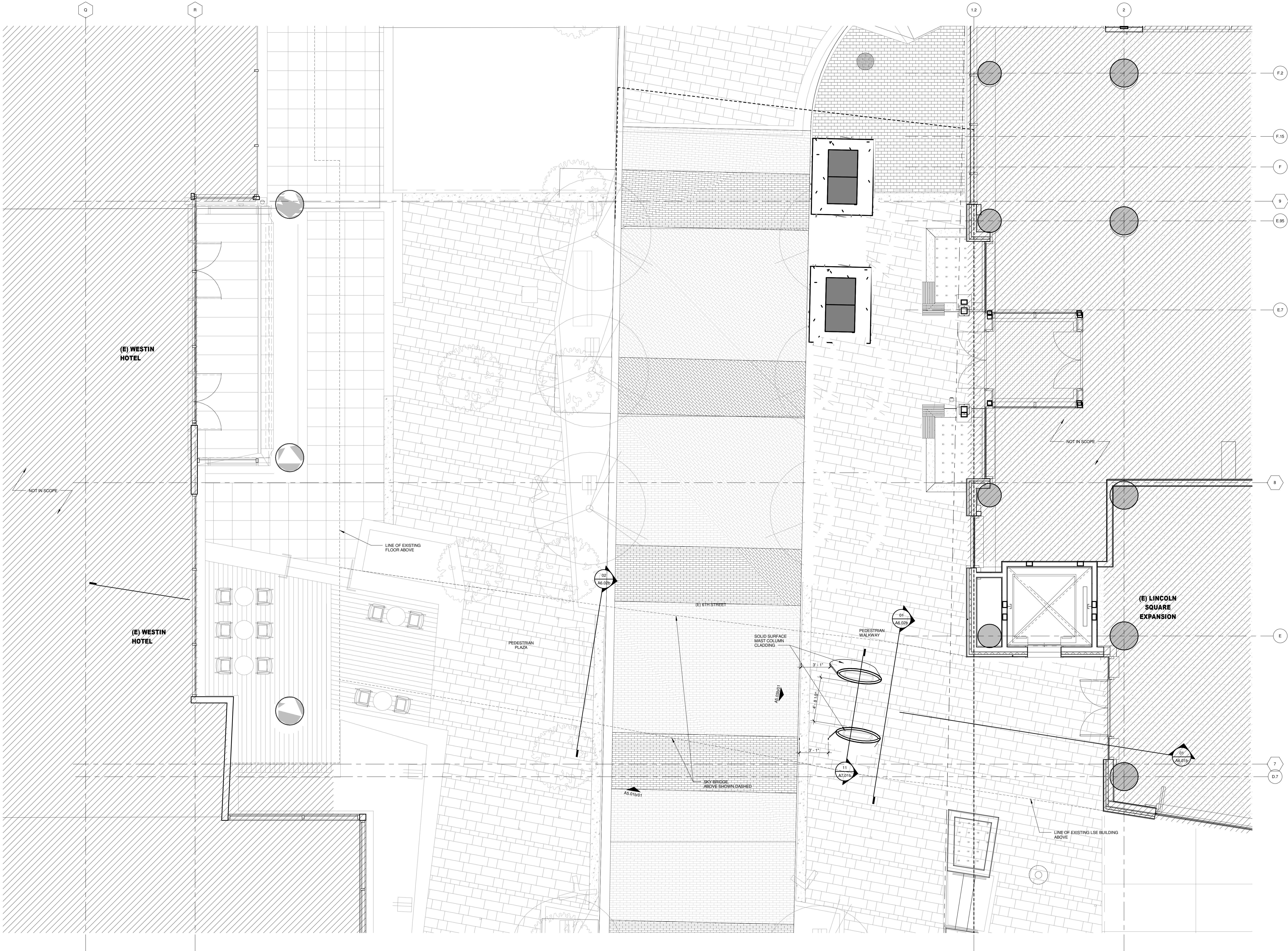
| REVISION NO. | DESCRIPTION | DATE |
|-----------------|-------------|------|
| | | |
| | | |
| | | |
| | | |
| | | |
| | | |
| | | |
| | | |
| | | |

HKS PROJECT NUMBER
19728.004
DATE
01/22/16
ISSUE
**GMX AND PERMIT
SUBMITTAL**

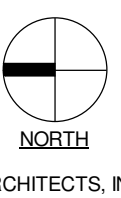
SHEET TITLE
FLOOR PLANS

SHEET NO.

A2.01b



01 LEVEL 1 - PEDESTRIAN PLAZA PLAN
1/4" = 1'-0"

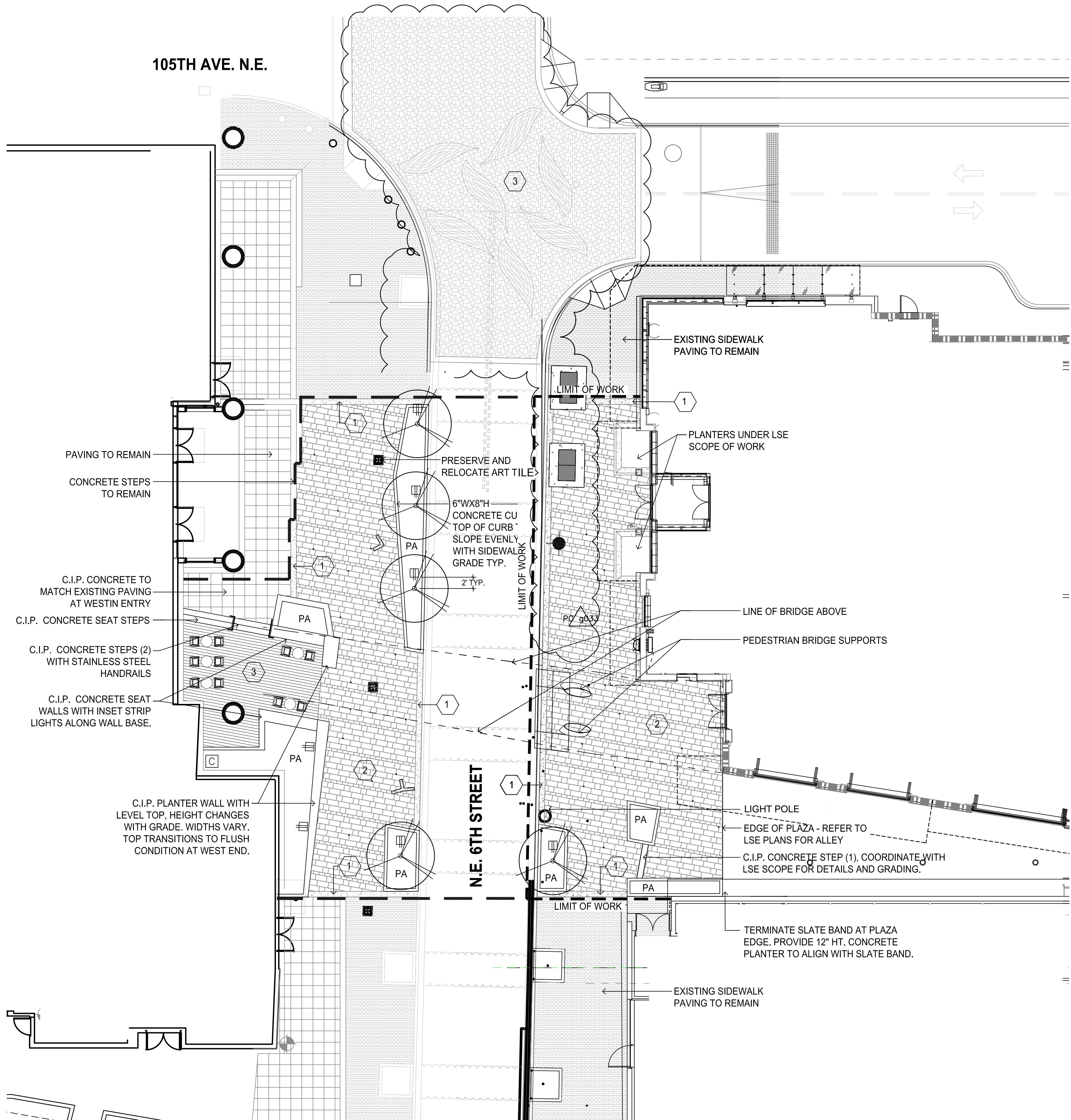


| MATERIALS SCHEDULE | | |
|--------------------|--|---|
| 1 | | C.I.P. ACCENT BAND - SMOOTH FINISH, NATURAL COLOR, 12" WIDTH. |
| 2 | | CONCRETE PAVERS - ACKERSTONE PALAZZO 12"x24", 6"x12", 12"x12". NO CHAMFER. MORTAR SET, OVER 5" SLAB PER CITY OF BELLEVUE |
| 3 | | WOOD DECKING - FSC CERTIFIED IPE OR TOURNESOL BOULEVARD WOOD - PROVIDE MOCK UP 8 MONTHS PRIOR WITH BOTH PRODUCTS FOR OWNER SELECTION. USE HIDDEN ATTACHMENTS. SEAL WITH MATTE SEALER. |
| 4 | | LINEAR PAVING IN INTERSECTION - C.I.P. CONCRETE. SAW CUT SCORE JOINTS. INTEGRAL ADMIX DAVIS COLOR TO BE SELECTED TO MATCH FIELD OF PAVERS. |
| 5 | | C.I.P. SMOOTH CONCRETE SEAT WALLS, TYPE A FINISH. SEE GRADING PLANS FOR WALL HEIGHTS. SEE LIGHTING PLANS FOR INSET STRIP LIGHTS. |

PAVING NOTES

1. REFER TO CIVIL PLANS FOR GRADING & DRAINAGE, PAVING SECTIONS, DETAILS, AND UTILITIES WITHIN R.O.W.
2. REFER TO IRRIGATION DRAWINGS FOR ALL SLEEVING THROUGH PAVED AREAS.
3. ABBREVIATIONS: C.I.P. = CAST IN PLACE, PA= PLANTING AREA
4. ALL PAVING AND LANDSCAPE BEYOND LIMIT OF PLAZA ARE TO REMAIN, UNLESS OTHERWISE INDICATED ON PLANS.
5. MATERIALS AND DETAILS ARE BASED ON OBSERVATIONS OF EXISTING CONDITIONS AND INFORMATION FROM SURVEY. LS AS-BUILTS HAVE NOT BEEN PROVIDED OR VIEWED.

| LANDSCAPE MATERIALS | | |
|---------------------|------|---|
| | QTY. | |
| | | LANDSCAPE FORMS - PARC CENTRE TABLES AND CHAIRS. |
| | 3 | LIGHT POLES - SEE LIGHTING PLANS FOR LOCATIONS AND FIXTURE INFORMATION. |
| | 10 | RECEPTACLES FOR SEASONAL LIGHTING. SEE ELECTRICAL PLANS. |
| | 1 | IRRIGATION CONTROLLER. PROVIDE 120V POWER, 1/2" WATER CONNECTION. |



1 MATERIALS PLAN
1" = 10'-0"
0 5' 10' 20' 40'
SCALE: 1" = 10' - 0"

ARCHITECT
HKS ARCHITECTS, INC.
10880 WILSHIRE BLVD., SUITE 1850
LOS ANGELES, CA 90024

LANDSCAPE ARCHITECT
BRUMBAUGH & ASSOCIATES
600 NORTH STREET, SUITE 102
SEATTLE, WA 98103

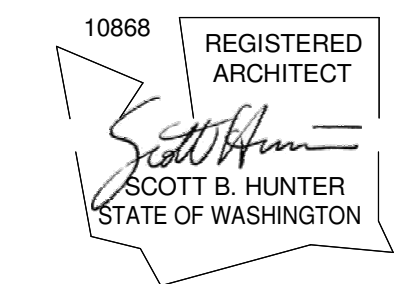
STRUCTURAL ENGINEER
KPF
1601 FIFTH AVENUE, SUITE 1600
SEATTLE, WA 98101

CIVIL ENGINEER
COUGHLIN PORTER LUNDEN
801 SECOND AVENUE, SUITE 900
SEATTLE, WA 98104

LIGHTING DESIGNER
CANDELA
4100 194TH STREET SW, SUITE 400
LYNNWOOD, WA 98036

**LINCOLN SQUARE EXPANSION
PLAZA + SKY BRIDGE**
BELLEVUE, WASHINGTON

OWNER
KEMPER DEVELOPMENT COMPANY
575 BELLEVUE SQUARE
BELLEVUE, WA 98004



KEY PLAN

| REVISION NO. | DESCRIPTION | DATE |
|--------------|-------------|------|
|--------------|-------------|------|

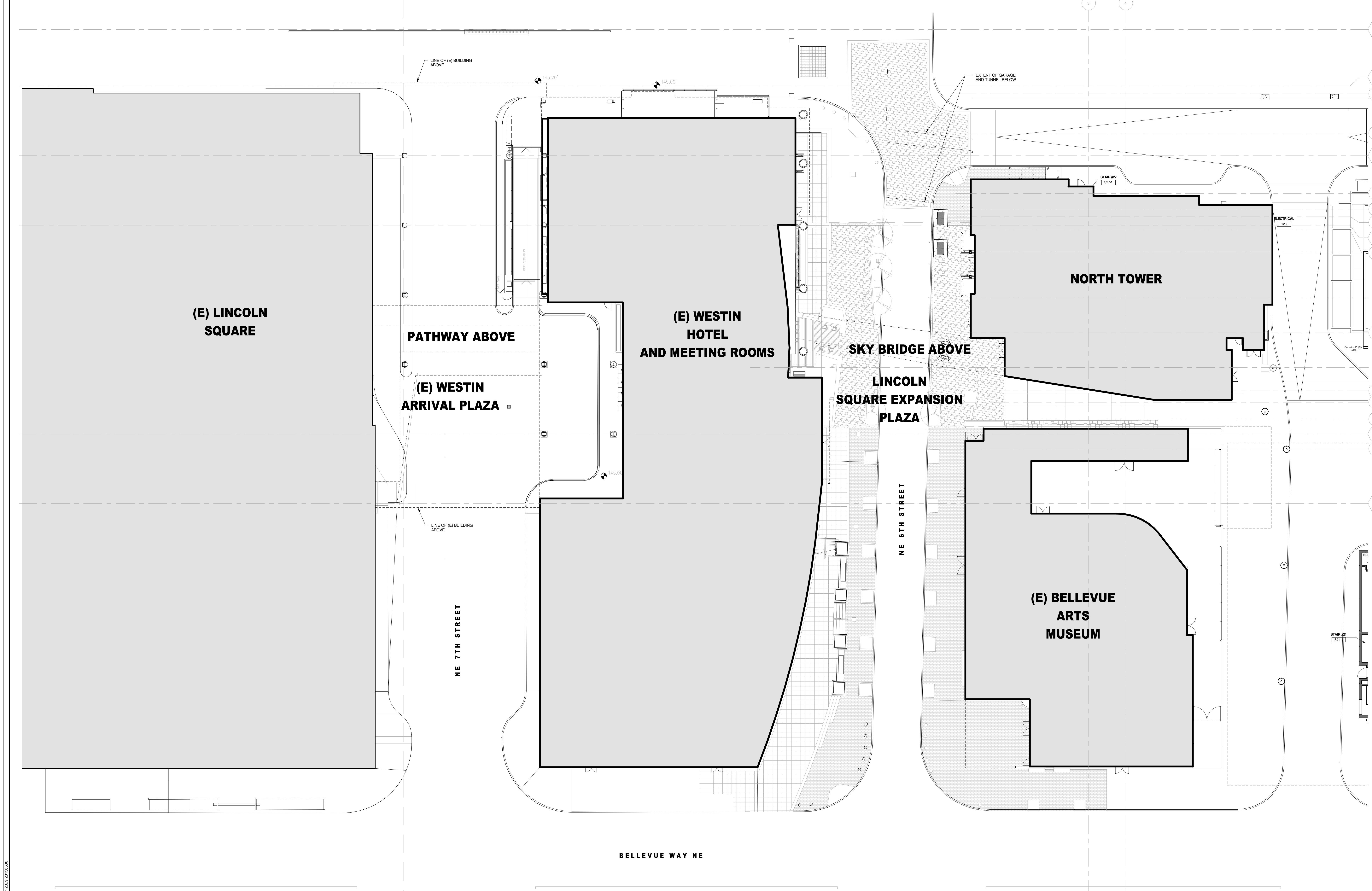
| | | |
|--|--|--|
| | | |
| | | |
| | | |
| | | |
| | | |
| | | |
| | | |
| | | |
| | | |
| | | |

HKS PROJECT NUMBER
19728.004
DATE
01/22/16
ISSUE
**GMAX AND PERMIT
SUBMITTAL**

SHEET TITLE
SITE PLAN

SHEET NO.

A1.00b



01 SITE PLAN
1/16" = 1'-0"

