

# NEIGHBORHOOD

## SAFETY, CONNECTIVITY AND CONGESTION LEVY



# Program Overview and Project Update

## Transportation Commission

Marie Jensen  
John Murphy

*Transportation Department*

Levy Co-Manager  
Levy Co-Manager

Sep. 13, 2018

# October 2017 Meeting

- Provided overview of Levy program, including project types
- Neighborhood Congestion Reduction program
- **2019-2020 project briefing planned for fall 2018**



# Agenda

- Levy background
- 2017-2018 Project updates
- 2019-2020 Project selection
- Levy communications

**Purpose of tonight's presentation is for information only; no action or direction is sought**

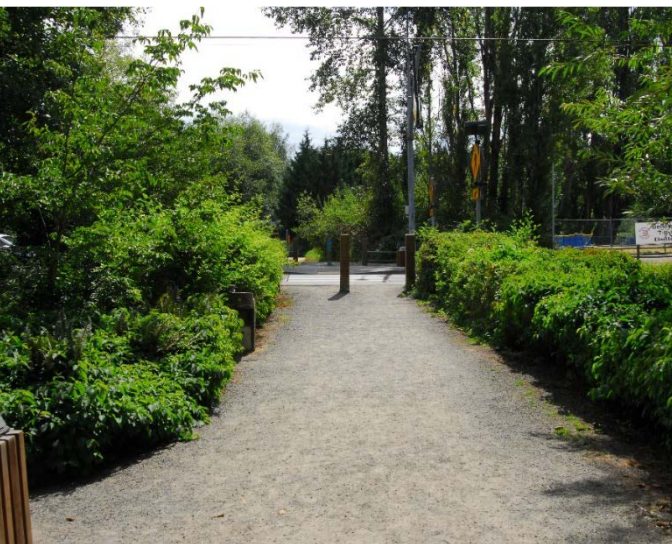
# Levy Background

- Voter-approved (2016)
- 20-year levy on property value
- Helps to do more of what we already do
- Funding covers project outreach, planning, design and construction
- Leverage other funding sources

## What the levy funds

- Crosswalks
- Bike lanes
- Maintenance
- Traffic technology
- Sidewalks
- Traffic calming
- Street lightings
- Signals
- Turn lanes
- Radar signs
- More









# Neighborhood Safety, Connectivity Levy

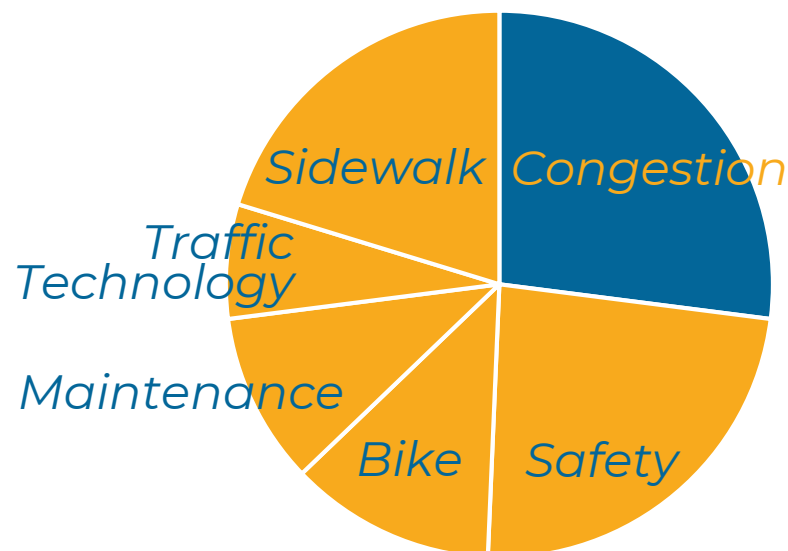
\$7.4 million/year

## Neighborhood Congestion Reduction

\$2 million/year

## Safety & Connectivity Projects

\$5.4 million/year



# Project development

- Levy projects originate from existing work programs (except for congestion)
- Transportation Commission Involvement
  - Evaluation criteria
  - Program development
  - Plan development
  - Updates
- City Council Involvement
  - Adoption of plans and programs
  - Updates

# 2017-2018 Projects

- Substantial progress
  - End of 2018: \$6.2 million in projects complete or in construction
- Continue to advance projects into 2019

Current Phase	# Of Projects*
Concept	8
Planning	4
30% Design	4
60% Design	2
90/100% Design	4
Construction	8
Complete	13

\* As of 9/10/18



# 2017-2018 Projects

Project Type	Biennial Allocation	# of Projects (2017-2018)	Source of Projects
Neighborhood Congestion Reduction	\$4M	3	Neighborhood Congestion Reduction Evaluation and Prioritization.
Bicycle	\$1.8M	15	Bicycle Rapid Implementation Program (BRIP) project list
Sidewalks	\$2.5M	5	Neighborhood Sidewalk Program
Safety	\$4.5M	15	Neighborhood Traffic Safety Service, Traffic Operations, Crosswalk Program backlog
Traffic Technology	\$1M	3	Smart Mobility Plan
Maintenance	\$1M	2	Maintenance backlog





NE 24<sup>th</sup> Bike Lane Project-before



118<sup>th</sup> Ave SE Sidewalk-before



NE 24<sup>th</sup> Bike Lane Project-after



118<sup>th</sup> Ave SE Sidewalk-during







# Community input

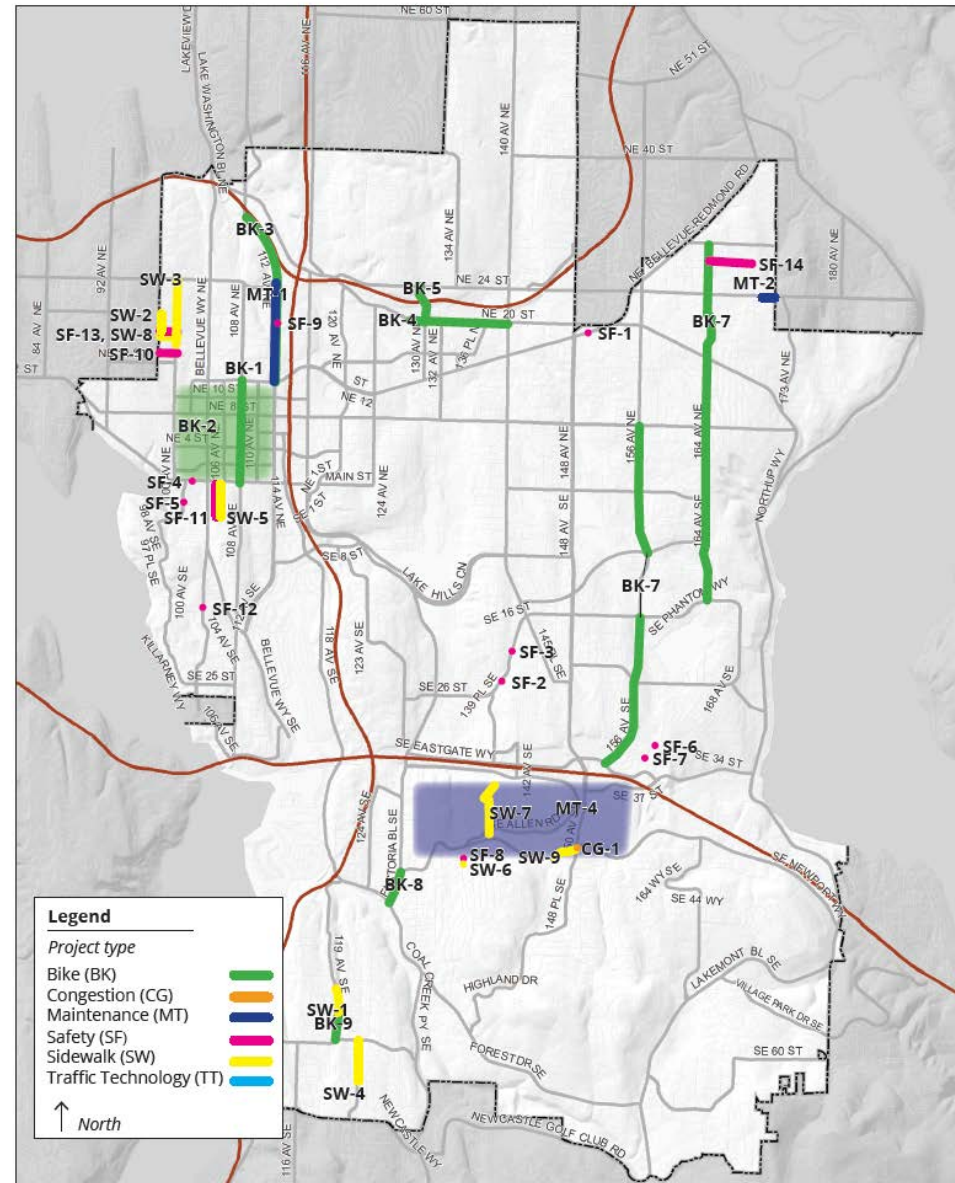
- Existing program channels
- Neighborhood Enhancement Program
- Anticipated: Neighborhood Area Planning
- Community input involved throughout project lifecycle including scoping

[bellevuewa.gov/transportationlevy](https://bellevuewa.gov/transportationlevy)  
[transportationlevy@bellevuewa.gov](mailto:transportationlevy@bellevuewa.gov)



# 2019-2020 Projects

- Project backlogs
- Projects consistent with what voters approved
- Category allocation levels adjusted (still \$7.4 million/year total)



# Neighborhood Congestion Reduction 2019-2020

- Kicking off traffic studies with consultants, October 2018
- Complete Broader Eastgate Study, Spring 2019
- Prioritize projects for design and funding, Summer 2019
- Construct mini-roundabout at Newport Way/164<sup>th</sup> Ave SE, Spring 2019
- Construct traffic signal at 112<sup>th</sup> Ave NE/NE 24<sup>th</sup> St, Summer 2019

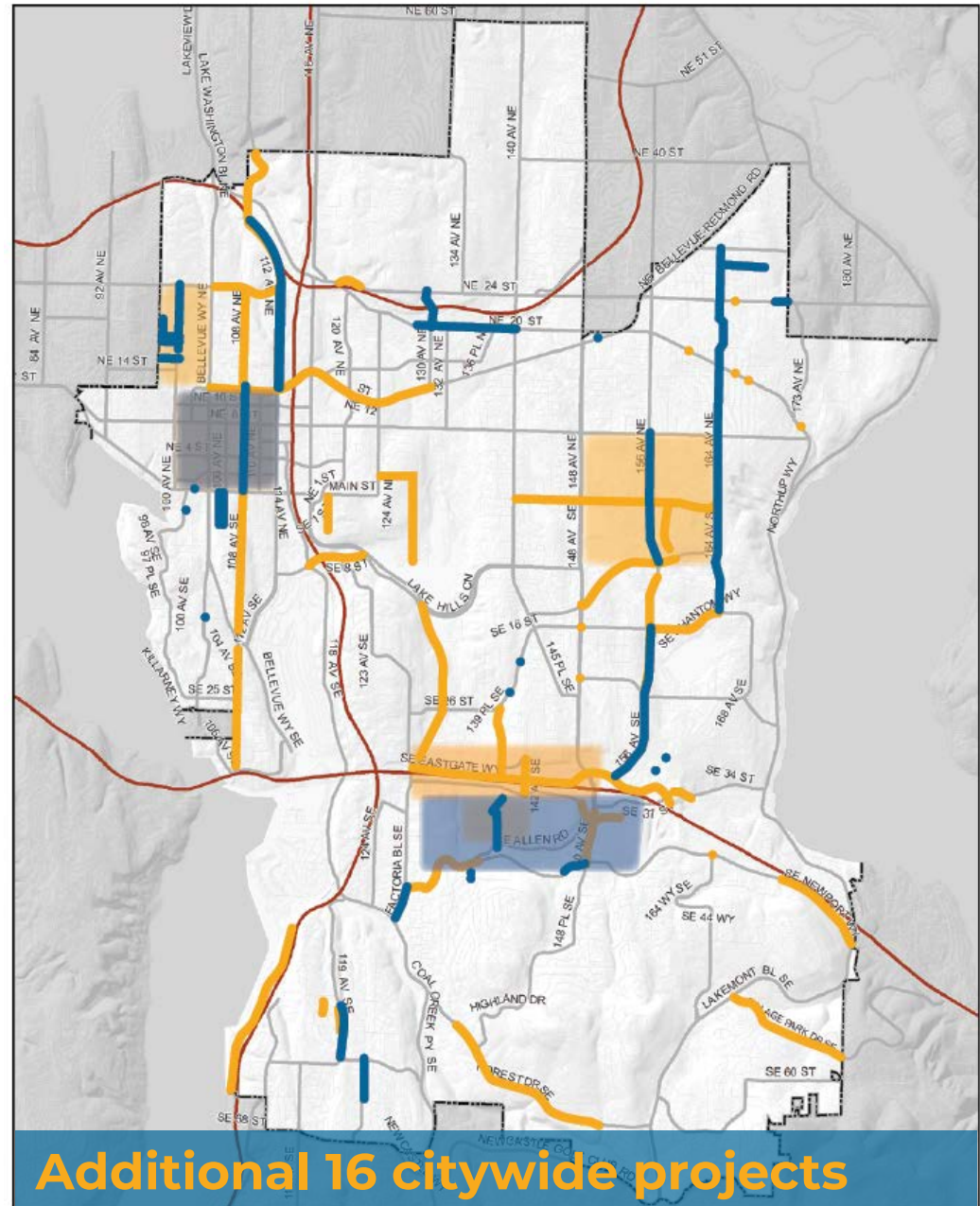


# 2017-2020 Projects

- Levy-funded projects in every neighborhood
- 90+ projects

## 2017-2018 project

## 2019-2020 project



# 2019-2020 Project Themes

- Continue to identify congestion projects; construction of 150<sup>th</sup>/Newport Way
  - Neighborhood Congestion Reduction Program to come back to Council in mid 2019
- Leveraging grants and other funding sources
- Continue downtown and other neighborhood bike improvements
- Finish work identified in 2017 by community
- Intersection improvements

# Communications

## Neighborhood Safety, Connectivity, and Congestion Levy Projects

A Story Map    

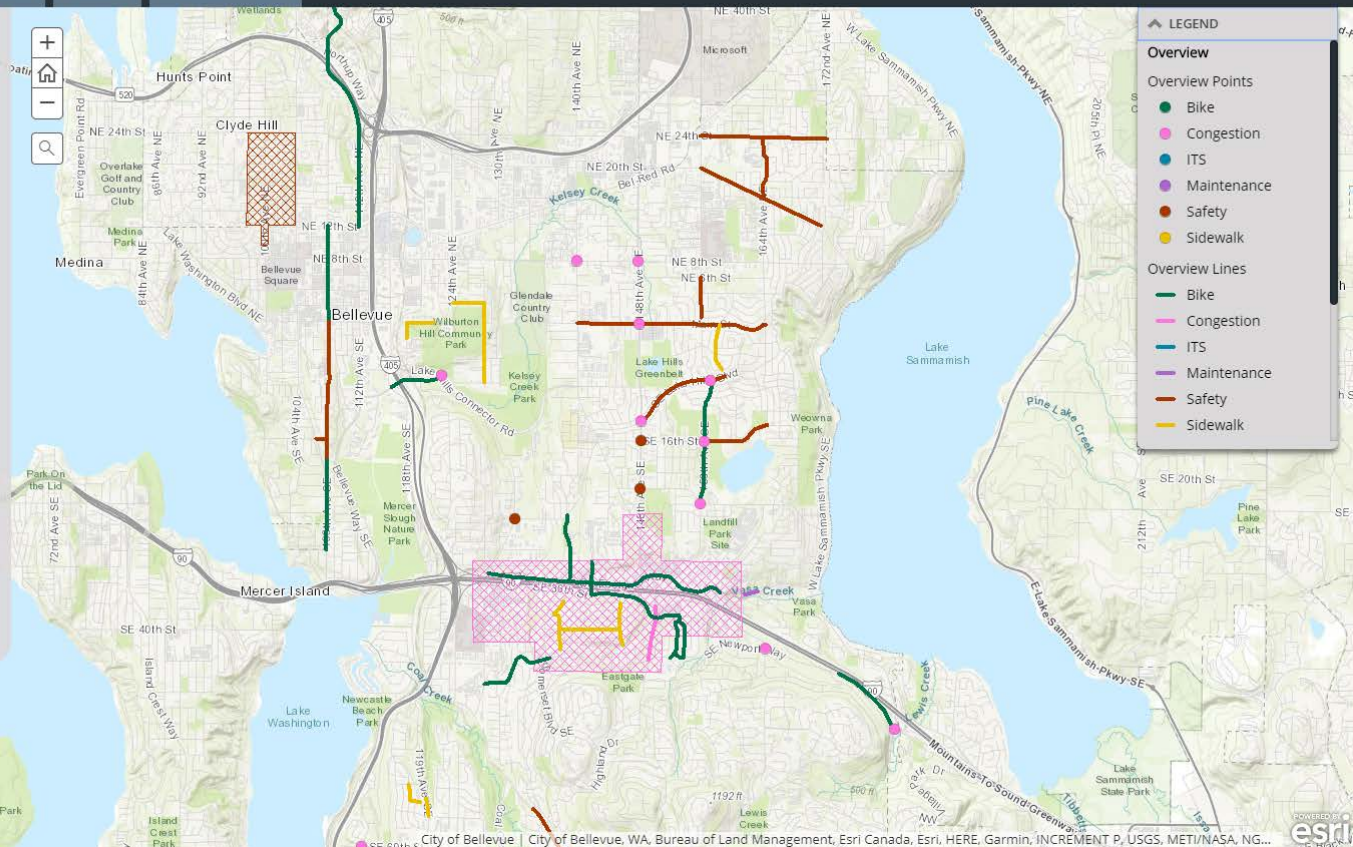
[Overview](#) [Bike](#) [Congestion](#) [Traffic Technology](#) [Maintenance](#) [Safety](#) [Sidewalks](#) [Completed Projects](#)



In 2016, Bellevue voters approved the 20-year ["Neighborhood Safety, Connectivity, and Congestion Levy."](#) The Levy provides funding to support existing transportation neighborhood programs and a new program aimed at easing motor vehicle congestion in neighborhoods. Levy funding supports the planning, design, construction and public outreach associated with selected levy-funded projects. Funding accelerates the city's ability to deliver more projects and services that Bellevue residents expect including:

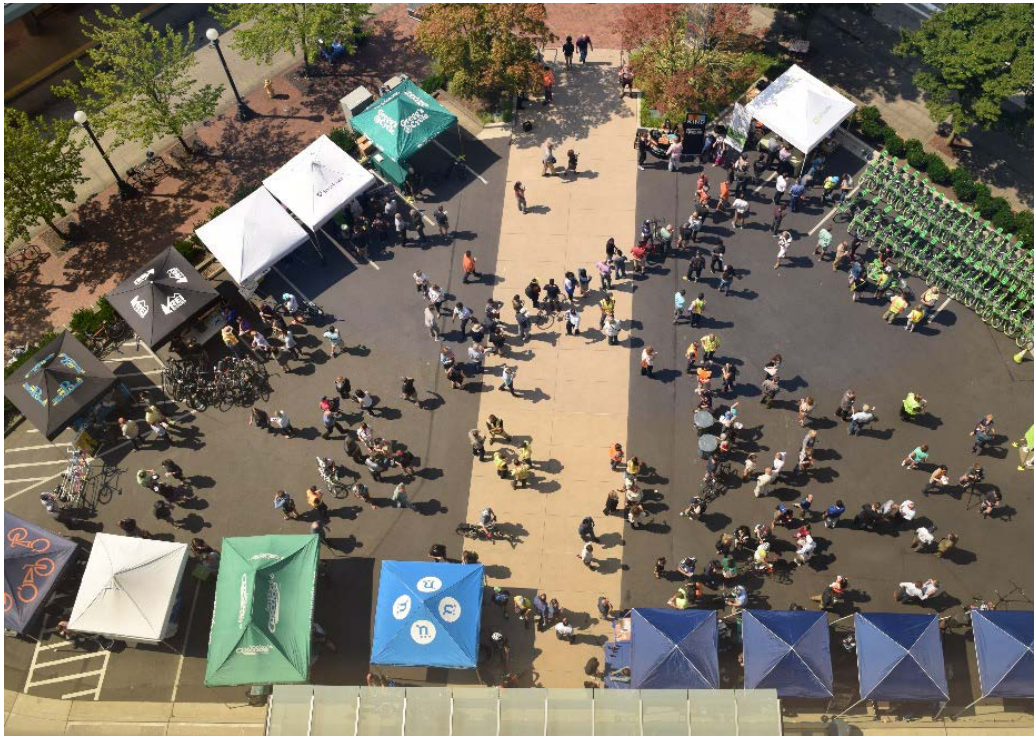
- Building neighborhood sidewalks, trails and pathways ([sidewalks](#));
- Installing traffic calming and crosswalk enhancements within neighborhoods and near schools ([safety](#));
- Advancing the city's Bicycle Rapid Implementation Plan ([bike](#));
- Enhancing traffic management technology ([traffic technology](#));
- Providing the ability to conduct more maintenance on sidewalks and boardwalk, including improvements to conform with Americans with Disabilities Act guidelines ([maintenance](#)); and
- Funding the newly created Neighborhood Congestion Reduction program ([congestion](#)).

Please email [transportationlevy@bellevuewa.gov](mailto:transportationlevy@bellevuewa.gov) for more information.

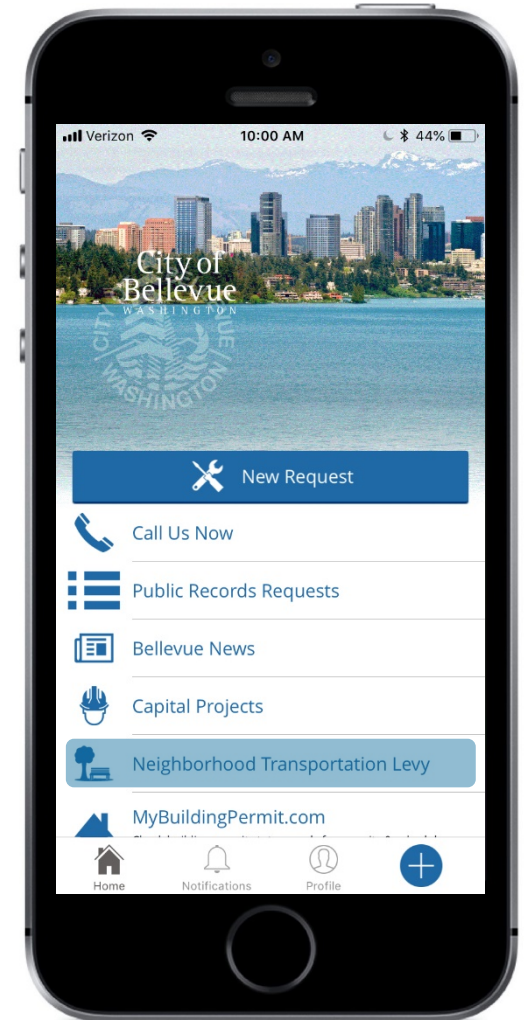




# Communications



[bellevuewa.gov/transportationlevy](http://bellevuewa.gov/transportationlevy)  
[transportationlevy@bellevuewa.gov](mailto:transportationlevy@bellevuewa.gov)



# Summary

- Most projects started in 2017 expected to be completed in 2019
- Planning/design to start for 2019-2020 projects
- City Council on 9/17 with update
- Commission engagement in 2019 on Neighborhood Congestion Reduction Program
- Levy Annual Accountability Report in early 2019

## Neighborhood Safety, Connectivity and Congestion Levy



# Contact

- Website is great source for project information  
**[bellevuewa.gov/transportationlevy](http://bellevuewa.gov/transportationlevy)**
- Or contact staff:

Marie Jensen

425-452-2064

[mjensen@bellevuewa.gov](mailto:mjensen@bellevuewa.gov)

John Murphy

425-452-6967

[jmurphy@bellevuewa.gov](mailto:jmurphy@bellevuewa.gov)

**Purpose of tonight's presentation is for  
information only; no action or direction is  
sought**