



March 6, 2017

The Honorable John Stokes  
City of Bellevue  
P.O. Box 90012  
Bellevue, WA 98009-9012

Dear Mayor Stokes:

We are pleased to forward for your consideration and ratification the enclosed amendment to the King County Countywide Planning Policies (CPP).

On February 13, 2017, the Metropolitan King County Council approved and ratified the amendment on behalf of unincorporated King County. The ordinance will become effective Monday, March 6, 2017. Copies of the transmittal letter, King County Council staff report, ordinance 18454 and Growth Management Planning Council motion are enclosed to assist you in your review of this amendment.

In accordance with the CPP, G-1, amendments become effective when ratified by ordinance or resolution by at least 30 percent of the city and county governments representing 70 percent of the population of King County according to the interlocal agreement. A city will be deemed to have ratified the CPP and amendments unless, within 90 days of adoption by King County, the city takes legislative action to disapprove the amendments. **Please note that the 90-day deadline for these amendments is Sunday, June 4, 2017.**

If you adopt any legislation concerning this action, please send a copy of the legislation by the close of business, Monday, June 5, 2017, to Melani Pedroza, Acting Clerk of the Council, Room 1200, King County Courthouse, 516 Third Avenue, Seattle, WA 98104.

If you have any questions about the amendments or ratification process, please contact Karen Wolf, Senior Strategy and Performance Analyst, King County

Executive's Office, at 206 263-9649, or Christine Jensen, Metropolitan King County Council Staff, at 206 477-5702.

Thank you for your prompt attention to this matter.

Sincerely,

The image shows two handwritten signatures in black ink. On the left is the signature of Joe McDermott, which is stylized and includes a large loop. On the right is the signature of Dow Constantine, which is more fluid and cursive.

Joe McDermott, Chair  
Metropolitan King County Council

Dow Constantine  
King County Executive

Enclosures

cc: King County City Planning Directors  
Sound Cities Association  
Lauren Smith, Director, Regional Planning  
Karen Wolf, Senior Strategy and Performance Analyst  
Christine Jensen, Council Staff, Transportation, Environment and Economy  
Committee (TREE)

2017-004

9/28/16

Sponsored By: Executive Committee**GMPC MOTION NO. 16-1**

A MOTION amending the 2012 King County Countywide Planning Policies; addressing changes to the Urban Growth Area of King County and the resulting changes to the Urban Growth Boundary map and Potential Annexation Area map.

WHEREAS, the Washington State Growth Management Act, RCW 36.70A.110 requires counties to designate an urban growth area within which urban growth shall be encouraged and outside of which growth can occur if it is not urban in nature; and

WHEREAS, Countywide Planning Policy G-1 recognizes that King County may initiate amendments to the Urban Growth Area; and

WHEREAS; the King County Executive and the King County Council request the Growth Management Planning Council consider the attached amendments to the Urban Growth Area for eventual adoption by the King County Council and ratification by the cities; and

WHEREAS, Countywide Planning Policies DP-15 – DP-18 outline criteria for changes to the Urban Growth Area; and

WHEREAS, on May 25, 2016, the Growth Management Planning Council received a briefing on all of the potential changes to the Urban Growth Area under consideration by the King County Transportation, Economy, and Environment Committee; and

WHEREAS, on September 20, 2016, the King County Transportation, Economy, and Environment Committee recommended the following amendments to the Urban Growth Area be considered by the King County Council as part of their approval of the 2016 King County Comprehensive Plan.

NOW THEREFORE BE IT RESOLVED that the Growth Management Planning Council of King County hereby recommends that the 2012 King County Countywide Planning Policies Urban Growth Boundary Map and the Potential Annexation Areas Map be amended as depicted on the attached maps.

  
Dow Constantine, Chair, Growth Management Planning Council

ATTACHMENTS

Maps to Be Amended (with technical fixes to titles, as noted below)

~~Growth Management Planning Council~~ Urban Growth Area Boundary – Countywide  
Planning Policies, September 2016

Potential Annexation Areas – Countywide Planning Policies ~~October~~  
~~2015~~, September 2016

For Reference – Detailed Site Maps Showing Specific Amendments to Urban Growth  
Area Boundary, as well as Amendment to East Cougar Potential Annexation Area

Urban Growth Area Contraction and Revision to Potential Annexation Area – East  
Cougar Mountain

Urban Growth Area Technical Amendment – SE 240th Street

Urban Growth Area Technical Amendment – 248th Ave SE

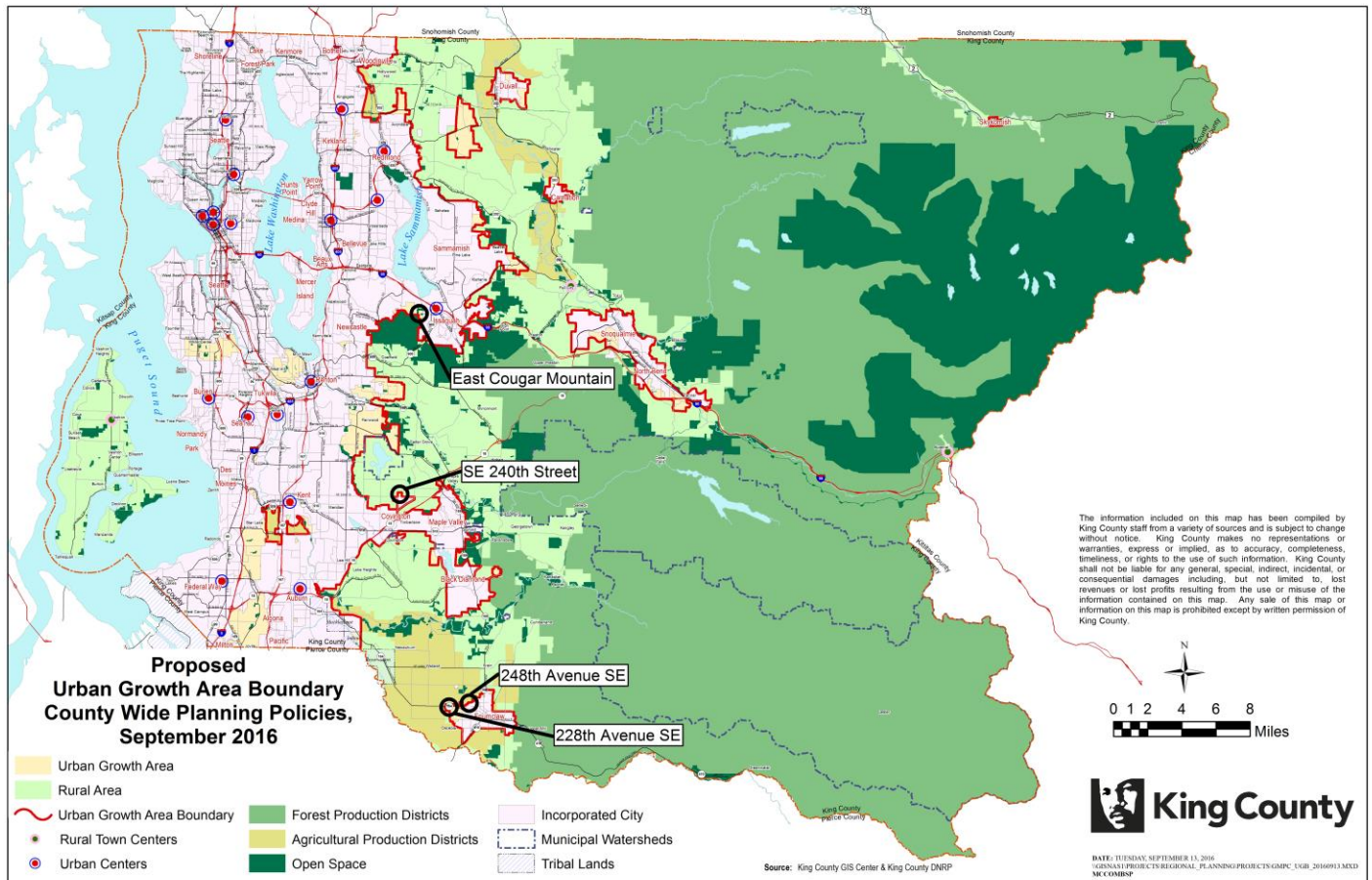
Urban Growth Area Technical Amendment – 228th Ave SE



Maps to Be Amended (with technical fixes to titles, as noted below)

*Note: Call out boxes to be removed following adoption by GMPC*

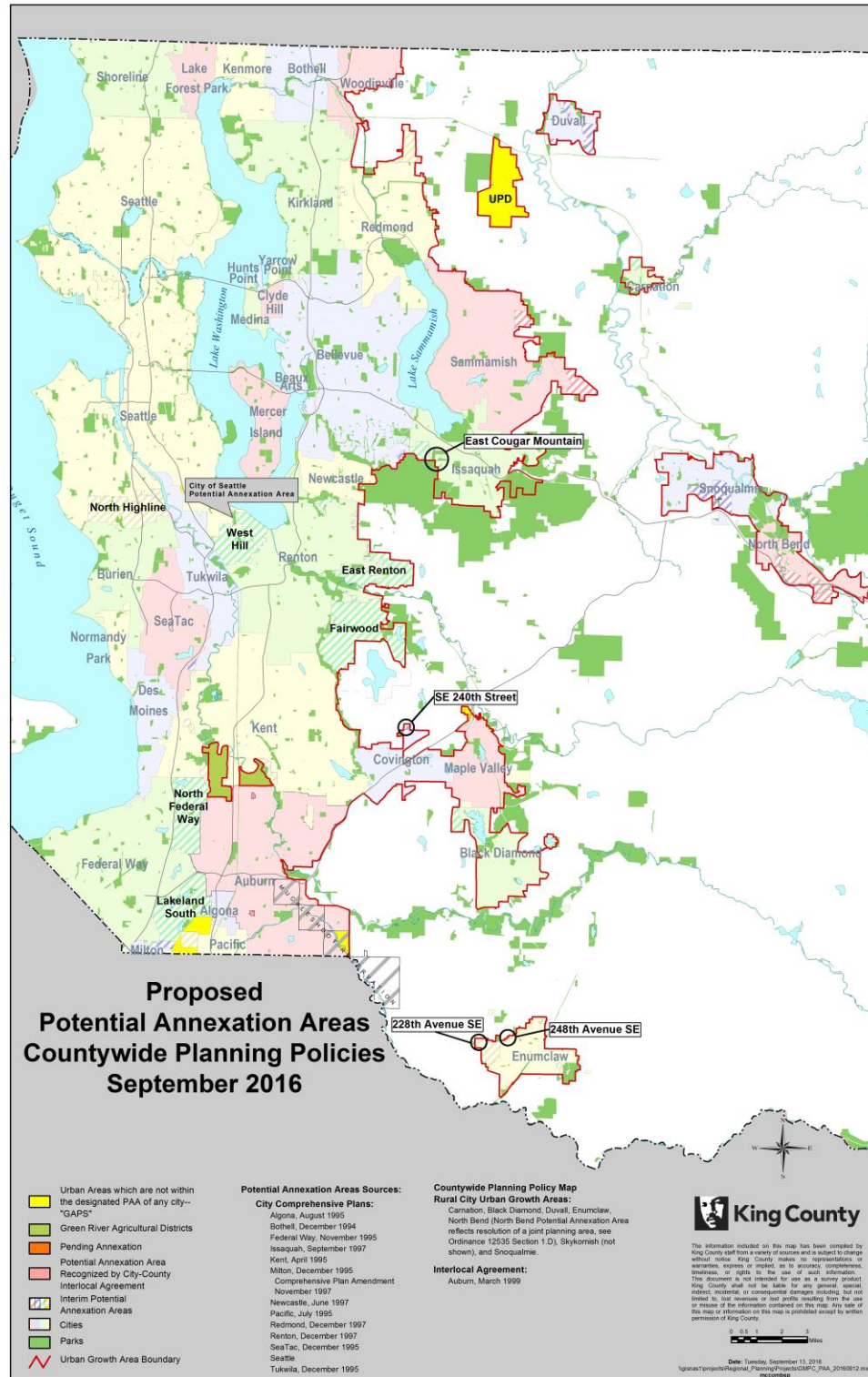
**Growth Management Planning Council**  
**Urban Growth Area Boundary – Countywide Planning Policies, September 2016**



## Maps to Be Amended (with technical fixes to titles, as noted below)

*Note: Call out boxes to be removed following adoption by GMPC*

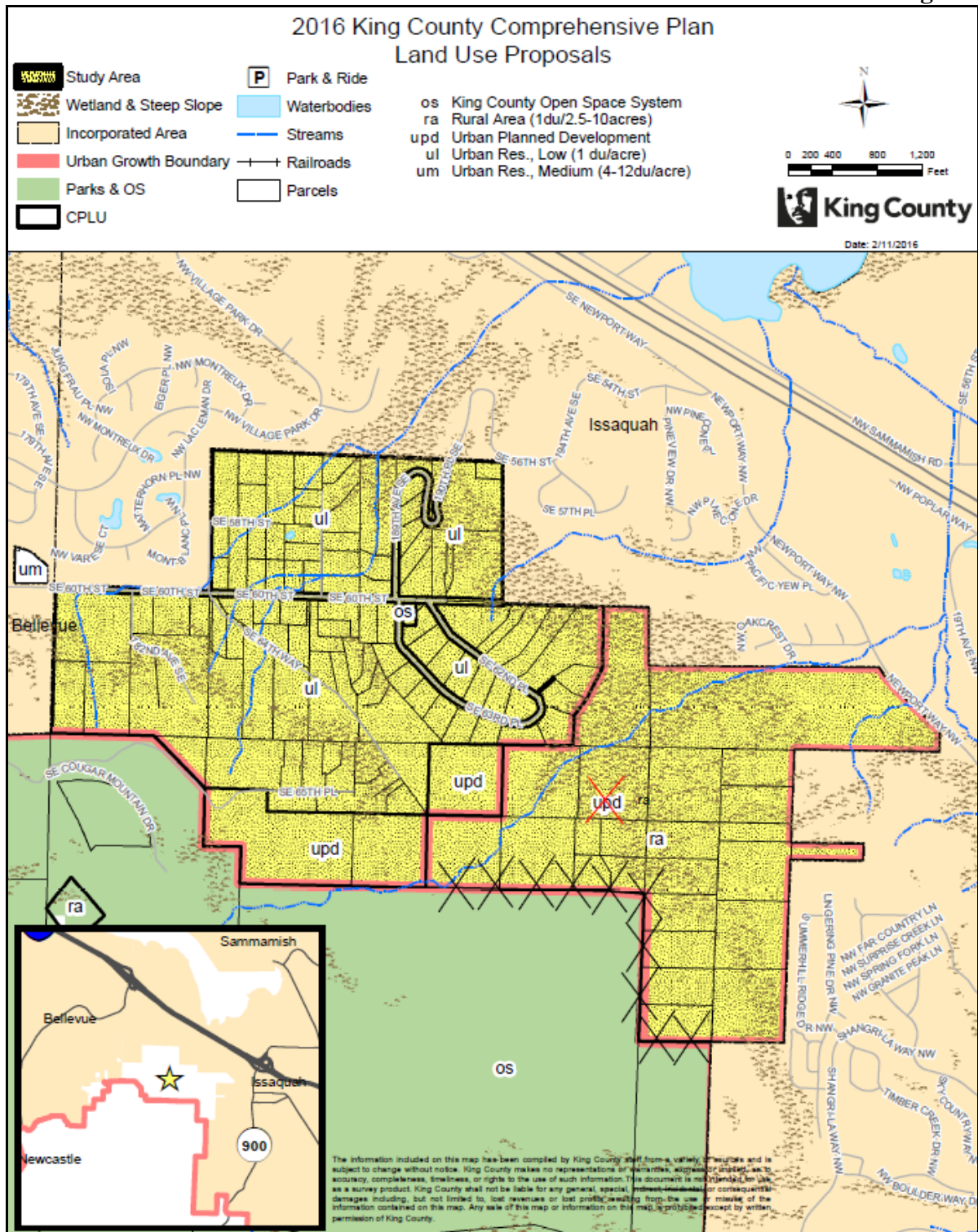
### Potential Annexation Areas – Countywide Planning Policies ~~October 2015~~, September 2016





For Reference – Detailed Site Maps Showing Specific Amendments to Urban Growth Area Boundary, as well as Amendment to East Cougar Potential Annexation Area

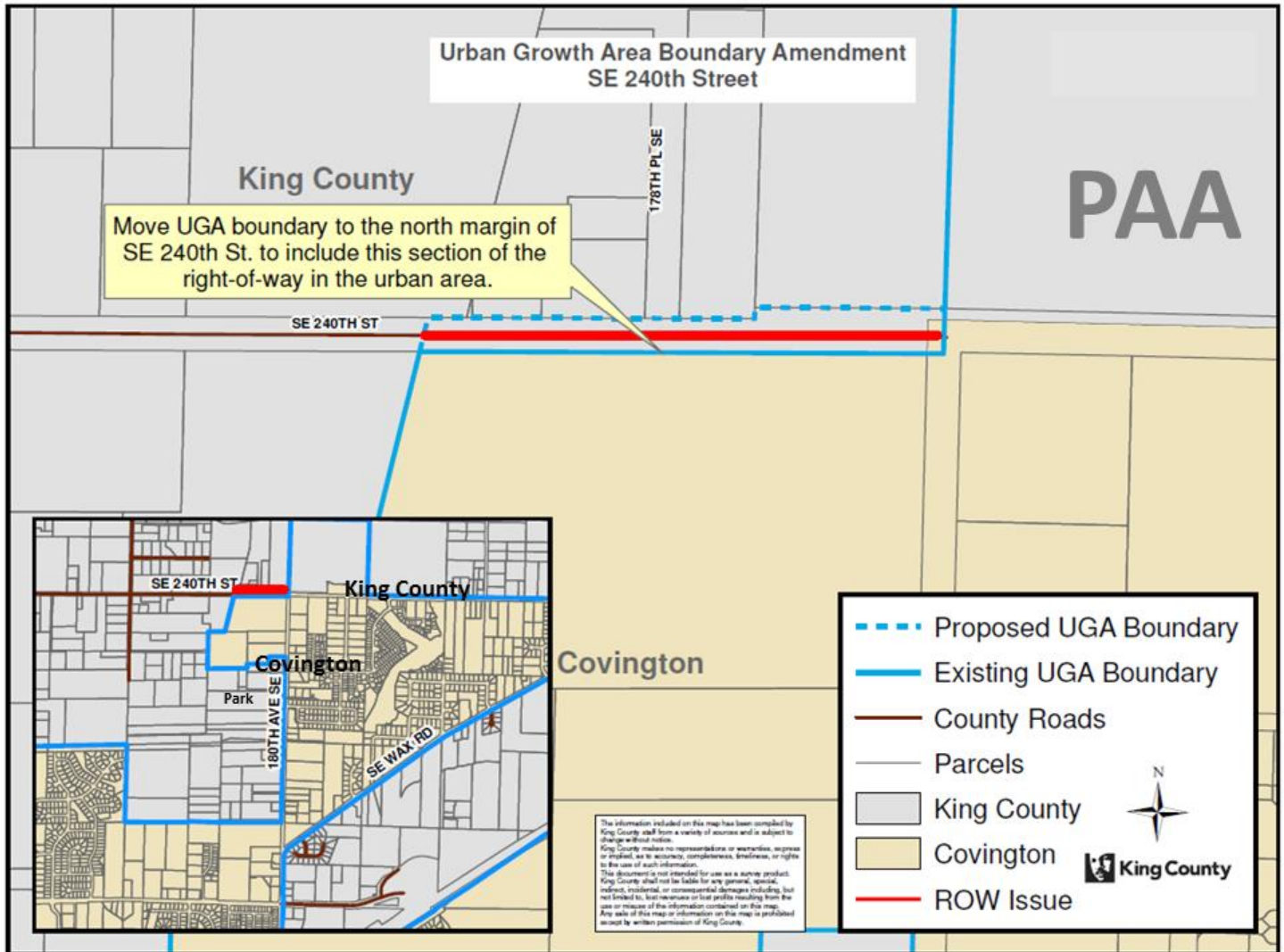
# **Urban Growth Area Contraction and Revision to Potential Annexation Area – East Cougar Mountain**



*Note: This change adds parcels to King County's unincorporated rural area. It also removes these same parcels from the City of Issaquah's Potential Annexation Area.*

For Reference – Detailed Site Maps Showing Specific Amendments to Urban Growth Area Boundary, as well as Amendment to East Cougar Potential Annexation Area

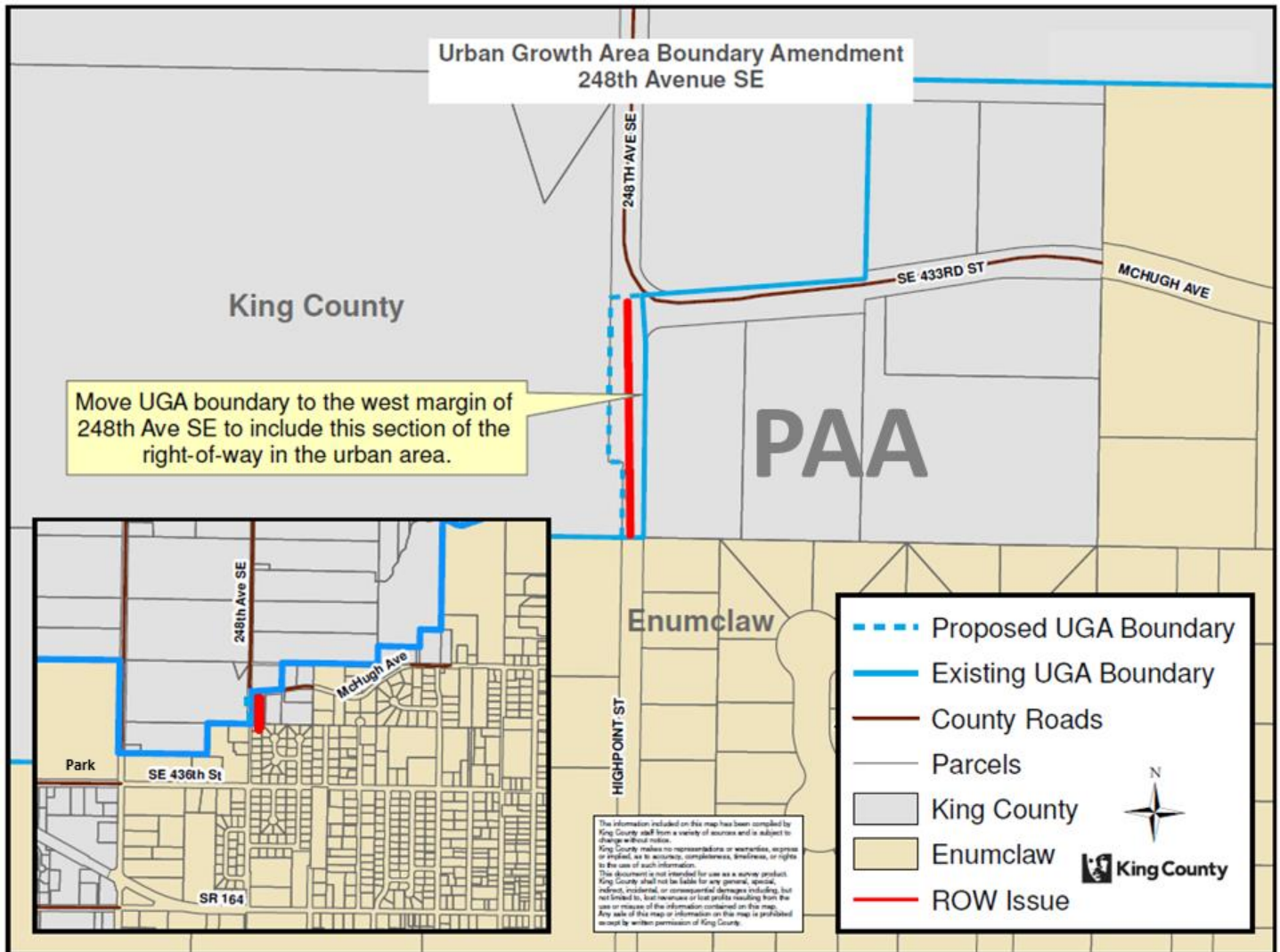
### Urban Growth Area Technical Amendment – SE 240th Street





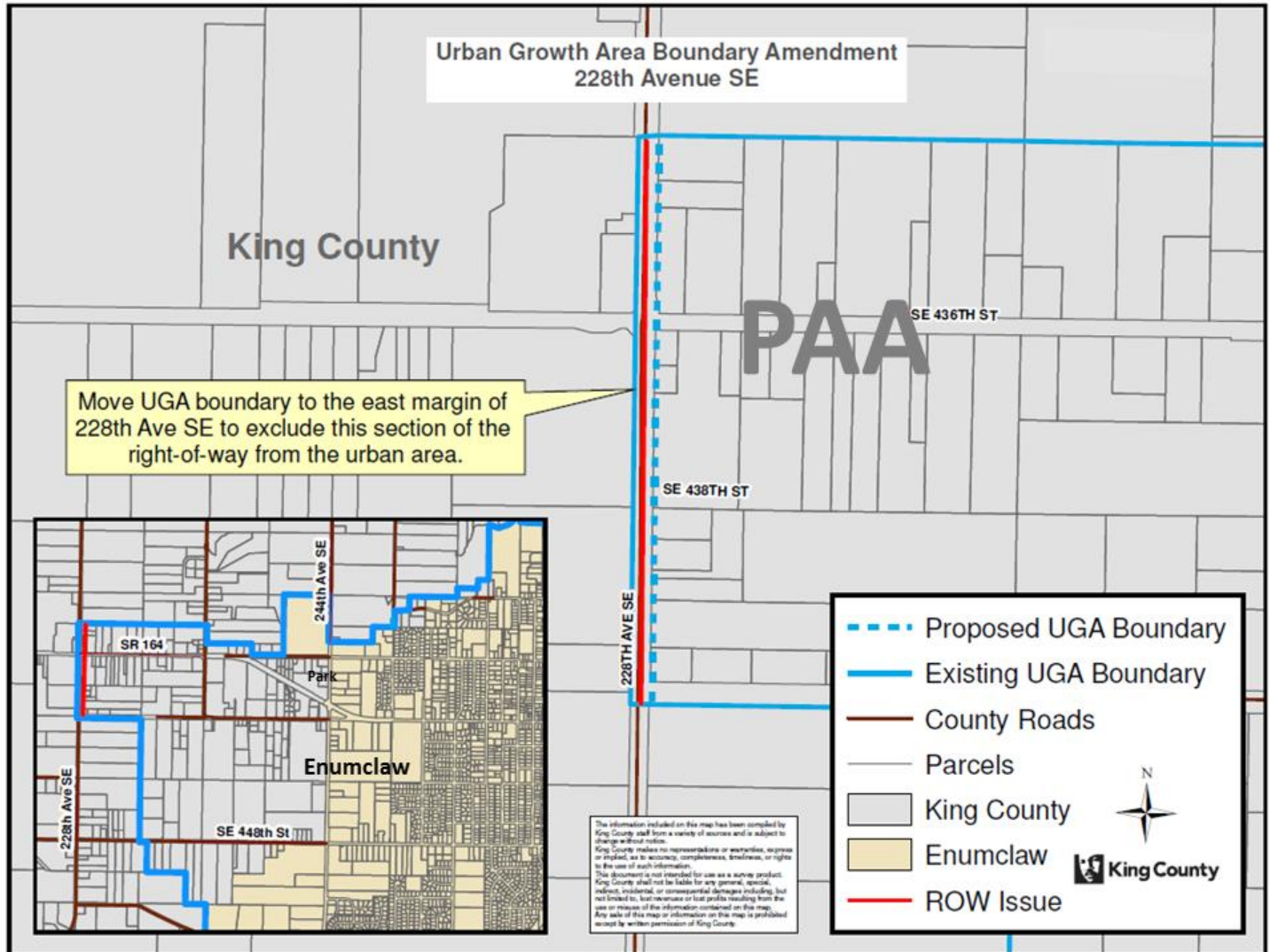
For Reference – Detailed Site Maps Showing Specific Amendments to Urban Growth Area Boundary, as well as Amendment to East Cougar Potential Annexation Area

### Urban Growth Area Technical Amendment – 248th Ave SE



For Reference – Detailed Site Maps Showing Specific Amendments to Urban Growth Area Boundary, as well as Amendment to East Cougar Potential Annexation Area

### Urban Growth Area Technical Amendment – 228th Ave SE





# KING COUNTY

1200 King County Courthouse  
516 Third Avenue  
Seattle, WA 98104

## Signature Report

February 13, 2017

Ordinance 18454

Proposed No. 2017-0004.1

Sponsors Dembowski

1 AN ORDINANCE adopting and ratifying Growth

2 Management Planning Council Motion 16-1.

3 BE IT ORDAINED BY THE COUNCIL OF KING COUNTY:

4 **SECTION 1. Findings:**

5 A. Growth Management Planning Council Motion 16-1 recommends that Urban  
6 Growth Area Map and the Potential Annexation Area Map in the 2012 King County  
7 Countywide Planning Policies be amended as depicted on the maps attached to Motion  
8 16-1.

9 B. On September 28, 2016, the Growth Management Planning Council  
10 unanimously adopted Motion 16-1, which recommends that the 2012 King County  
11 Countywide Planning Policies be amended to adjust the Urban Growth Area boundary for  
12 three technical amendments that involve road right-of-way adjustments and one  
13 substantive amendment to contract the Urban Growth Area boundary from the city of  
14 Issaquah's Potential Annexation Area at East Cougar Mountain.

15 **SECTION 2.** The amendments to the 2012 King County Countywide Planning



- 16 Policies, as shown in Attachment A to this ordinance, are hereby adopted by King County  
17 and ratified on behalf of the population of unincorporated King County.  
18

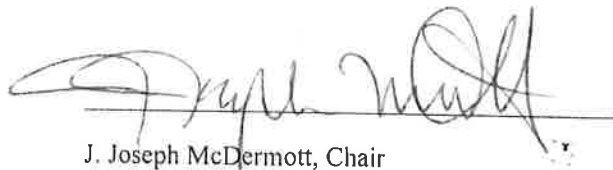
Ordinance 18454 was introduced on 1/17/2017 and passed by the Metropolitan King County Council on 2/13/2017, by the following vote:

Yes: 9 - Mr. von Reichbauer, Mr. Gossett, Ms. Lambert, Mr. Dunn,  
Mr. McDermott, Mr. Dembowski, Mr. Upthegrove, Ms. Kohl-Welles  
and Ms. Balducci

No: 0

Excused: 0

KING COUNTY COUNCIL  
KING COUNTY, WASHINGTON



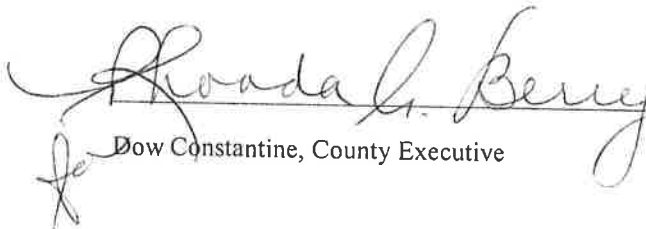
J. Joseph McDermott, Chair

ATTEST:



Melani Pedroza, Acting Clerk of the Council

APPROVED this 24<sup>th</sup> day of February 2017.



Dow Constantine, County Executive

Attachments: A. GMPC Motion No. 16-1