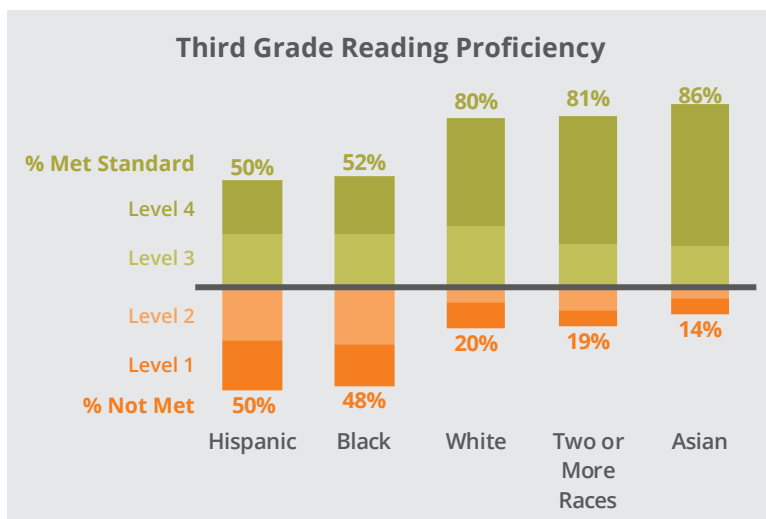


SUMMARY



A focus on **equity** is essential so that each child in our richly diverse community can access the many opportunities on the Eastside.

65%
earned a postsecondary
degree within six years of
graduating high school



In third grade reading scores, for example, there was a 30 point gap between Black and Hispanic students and all other students. We know literacy skills are the foundation for success in later grades. Changing these numbers requires an understanding of the obstacles holding our promising young students back.

The *Promotores* program launched in 2016 with that goal in mind. Eight Hispanic community members were selected for training and certification as *promotores*, or liaisons between families and organizations.

By harnessing the knowledge and leadership skills of our local Hispanic community, one of the communities most impacted by educational inequity is leading the work. **That is systems change.**

The model can be adapted for different cultural groups and contexts as our engagement work deepens. It keeps organizations from having to figure out community engagement on their own.

SOURCES

Kindergarten readiness: Percent met expectations in all six domains on WaKIDS, Office of Superintendent of Public Instruction (OSPI), Fall 2016.

3rd Grade Reading: Percent met standard on Smarter Balanced assessment, Bellevue School District (BSD), Spring 2016.

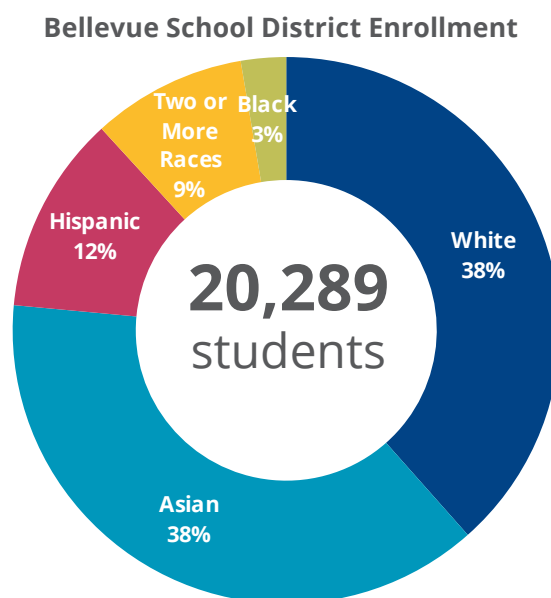
High school graduation: Five-year cohort graduation rate, OSPI, Class of 2015.

Authentic community engagement supports the work of our many collaborative work groups:

- School Readiness
- Summer and Extended Learning
- Attendance
- Transitions
- Career Pathways
- Mental Health and Wellbeing
- Community Engagement
- Business Engagement
- Racial Equity

Creating lasting change across organizations is complex. We implemented the adaptive leadership model in 2016 to determine project flow and ensure progress throughout the year.

In 2017 our priorities are to **align and allocate resources** toward our shared goals and **connect data across organizations** to spur improvement in delivering services that meet student needs.



Postsecondary completion: Percent earned two- or four-year degree within six years of finishing high school, National Student Clearinghouse via BSD, HS Class of 2010 in 2016.

Enrollment: OSPI, October 2016.