



Approved by City of Bellevue voters in November 2016, the 20-year, Neighborhood Safety, Connectivity and Congestion levy will help the city address a backlog of neighborhood safety, connectivity, sidewalk, bicycle, technology, congestion reduction and maintenance projects. There are currently 43 projects that will be delivered during 2017-2018.

### 2017-2018 Project List

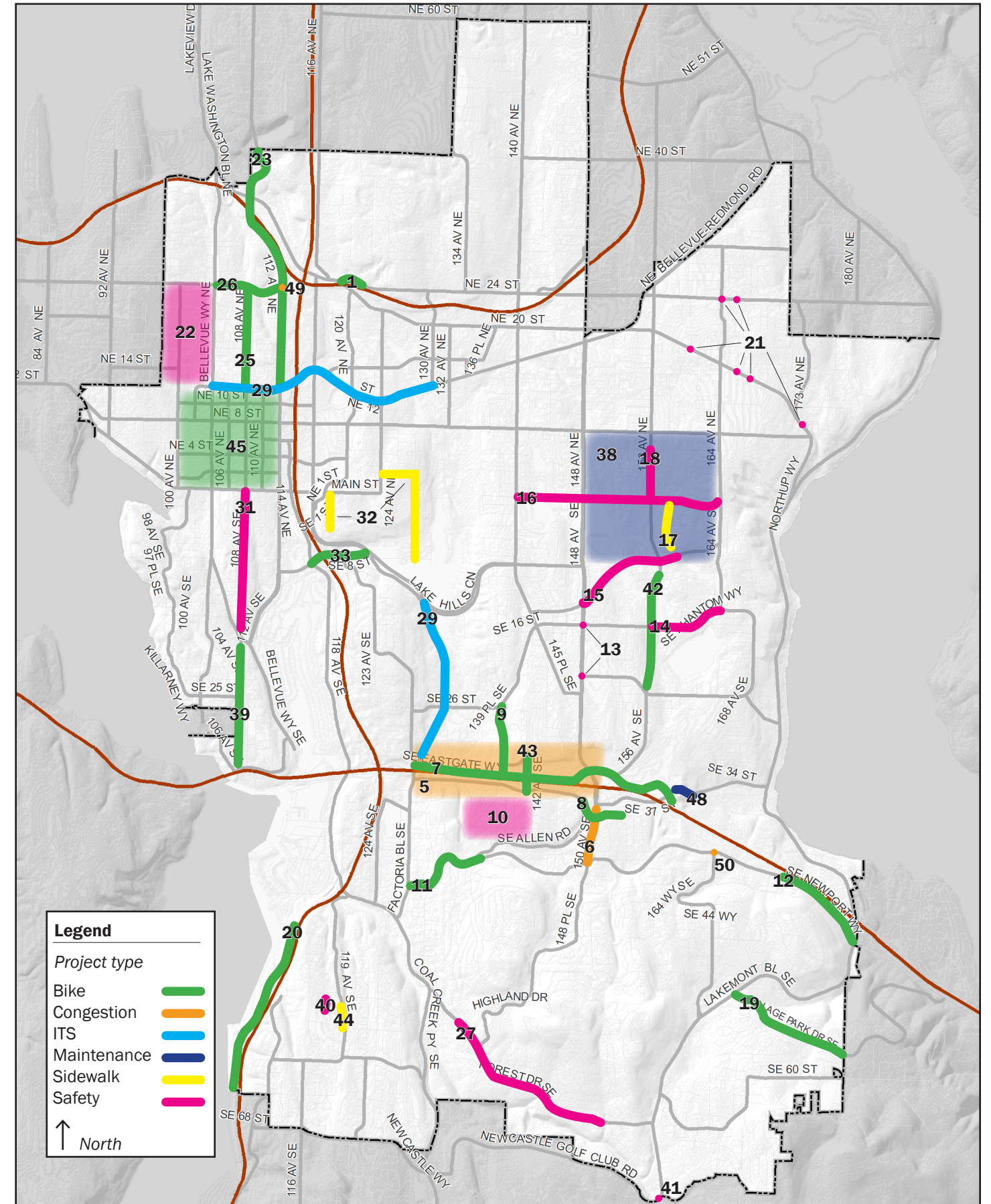
#### Project ID and Project Description

<b>1</b>	NE 24th St - Northrup Way to SR-520 Trail	<b>27</b>	Forest Drive Pedestrian Crossings
<b>5</b>	Eastgate Transportation Study	<b>28</b>	ITS - Communications Upgrade and Travel Time
<b>6</b>	150th Ave SE at Newport Way & SE 37th St	<b>29</b>	ITS - LED Lighting Upgrades (2 locations)
<b>7</b>	Eastgate Way - Richards Rd to I-90 Trail	<b>31</b>	108th Ave SE - Bellevue Way to Main St
<b>8</b>	SE 38th St - I-90 Overpass to 154th Ave SE	<b>32</b>	Wilburton Sidewalks Project
<b>9</b>	139th Ave SE - Eastgate Way to Kamber Rd	<b>33</b>	SE 8th St - 114th Ave SE to Lake Hills Connector
<b>10</b>	Tyee Middle School Safety	<b>35</b>	New ITS Partnerships
<b>11</b>	Newport Way west of 150th Ave SE	<b>36</b>	Congestion Traffic Analysis for (9) Intersections
<b>12</b>	Newport Way east of 150th Ave SE	<b>38</b>	156th Ave NE Corridor Sidewalk Maintenance
<b>13</b>	148th Ave SE - SE 16th/22nd Sts plus sidewalks	<b>39</b>	108th Ave SE - SE 30th St to Bellevue Way
<b>14</b>	SE 16th St - 156th to 164th Aves SE	<b>40</b>	117th Ave SE sidewalk
<b>15</b>	Lake Hills Blvd - 148th to 159th Aves SE	<b>41</b>	Lakemont Blvd at Red Town Trailhead Ped Crossing
<b>16</b>	Main St - 140th to 164th Aves SE	<b>42</b>	156th Ave bike project
<b>17</b>	158th Pl SE - Main St to SE 6th St	<b>43</b>	142nd Ave SE bike project
<b>18</b>	156th Ave NE Corridor Crosswalks	<b>44</b>	119th Ave SE sidewalk
<b>19</b>	Village Park Dr - Lakemont Blvd to 179th Ave SE	<b>45</b>	Downtown Demonstration Bikeway
<b>20</b>	Lake Wash Blvd - South City Line to Loop Trail	<b>46</b>	Boardwalk replacement
<b>21</b>	NE Bellevue Crosswalk Grant Match	<b>47</b>	Bike counters
<b>22</b>	100th Ave NE and Vicinity Complete Streets Project	<b>48</b>	SE 35th Pl Interim Walkway
<b>23</b>	112th Ave NE - NE 12th St to N. City Limit	<b>49</b>	NE 24th St/112th Ave SE Traffic Signal
<b>25</b>	108th Ave NE - NE 12th to NE 24th Sts	<b>50</b>	Newport Way/164th Ave SE Mini Roundabout
<b>26</b>	NE 24th St - Bellevue Way to 112th Ave NE		

Note: there are gaps in the ID numbers to maintain numbering consistency as projects get removed and added from the 2017-2018 project list.

\* levy project list subject to change based on design and construction coordination opportunities

### 2017-2018 Neighborhood Safety, Connectivity and Congestion Levy Projects



Citywide projects: #28 (ITS), #35 (ITS), #36 (Congestion), #46 (Maintenance), #47 (Bike)