

## **EXHIBIT "A"**

### **Large Park Entry Sign**

Standard Drawing # PK-SI-01



Parks & Community Services Department



City of  
Bellevue

TITLE:

# SIGN - PARK ENTRY - LARGE - ASSEMBLED DIMENSIONS AND PART IDENTIFICATION

DRAWING #:

PK-SI-01B

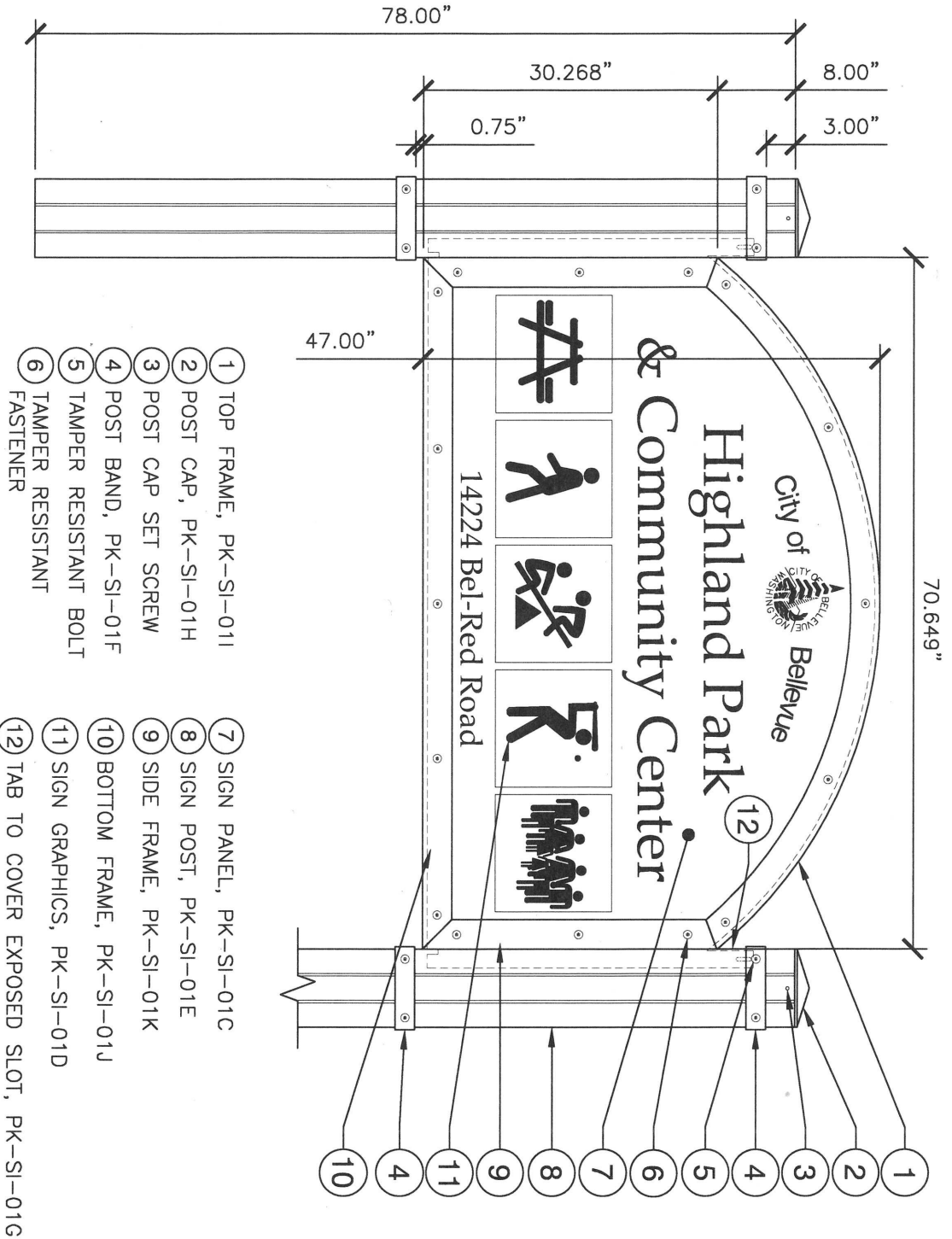
SCALE:

N.T.S.

REVISION DATE: 12-2018

DEPARTMENT:

PARKS





City of  
Bellevue

# SIGN - PARK ENTRY - LARGE - PANEL DIMENSIONS

TITLE:

DRAWING #:

PK-SI-01C

SCALE:

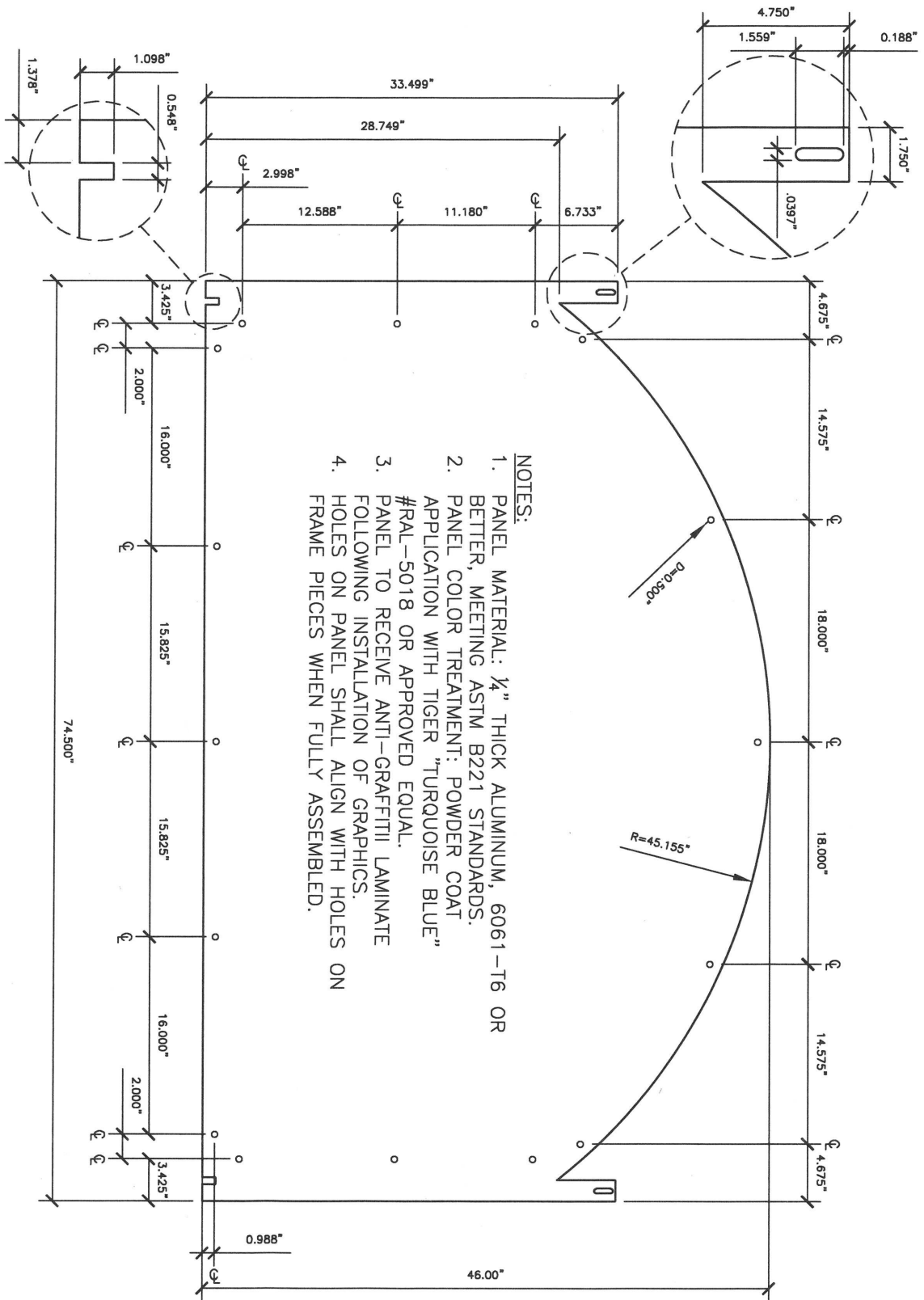
N.T.S.

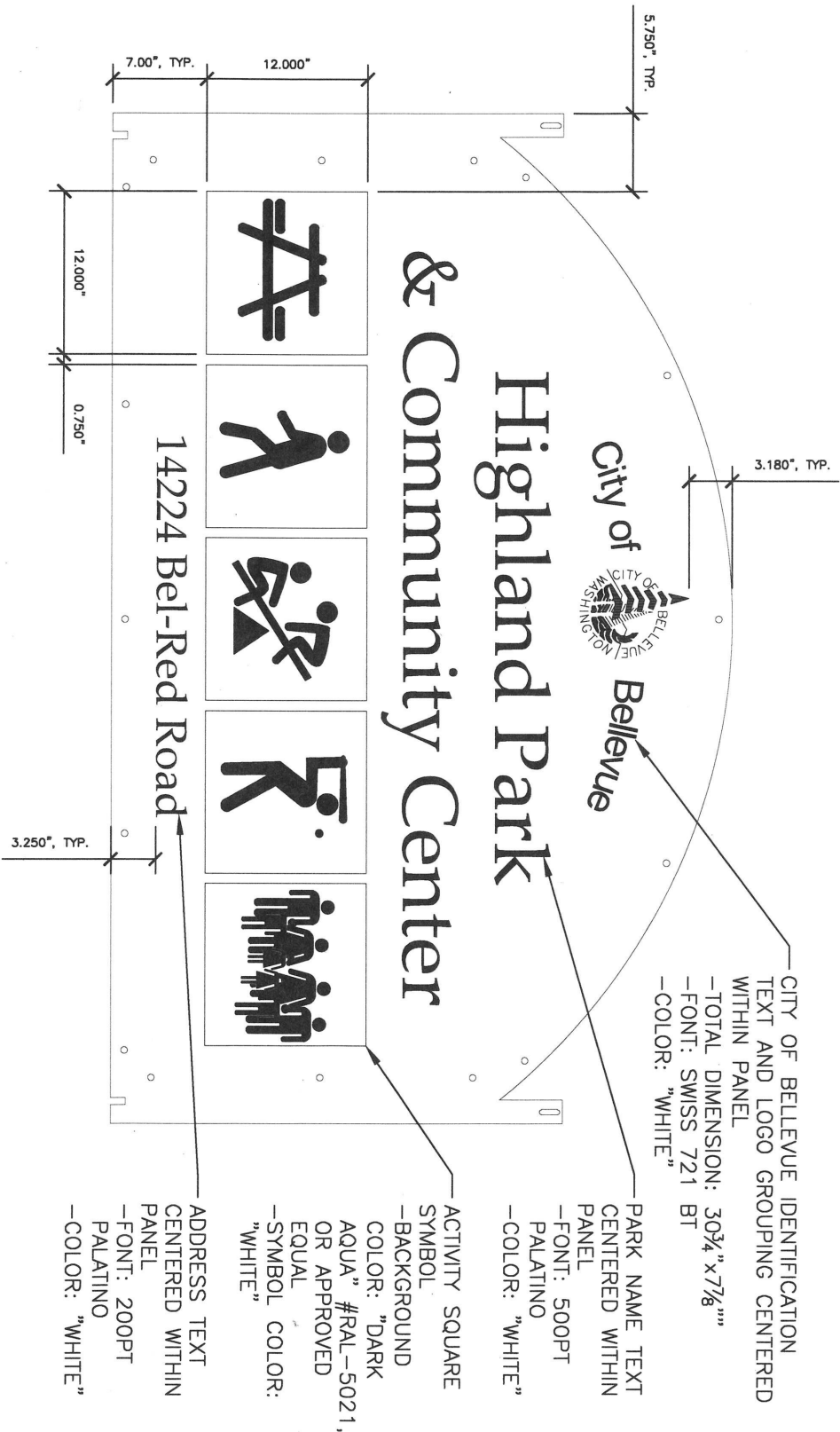
REVISION DATE:

12-2018

DEPARTMENT:

PARKS

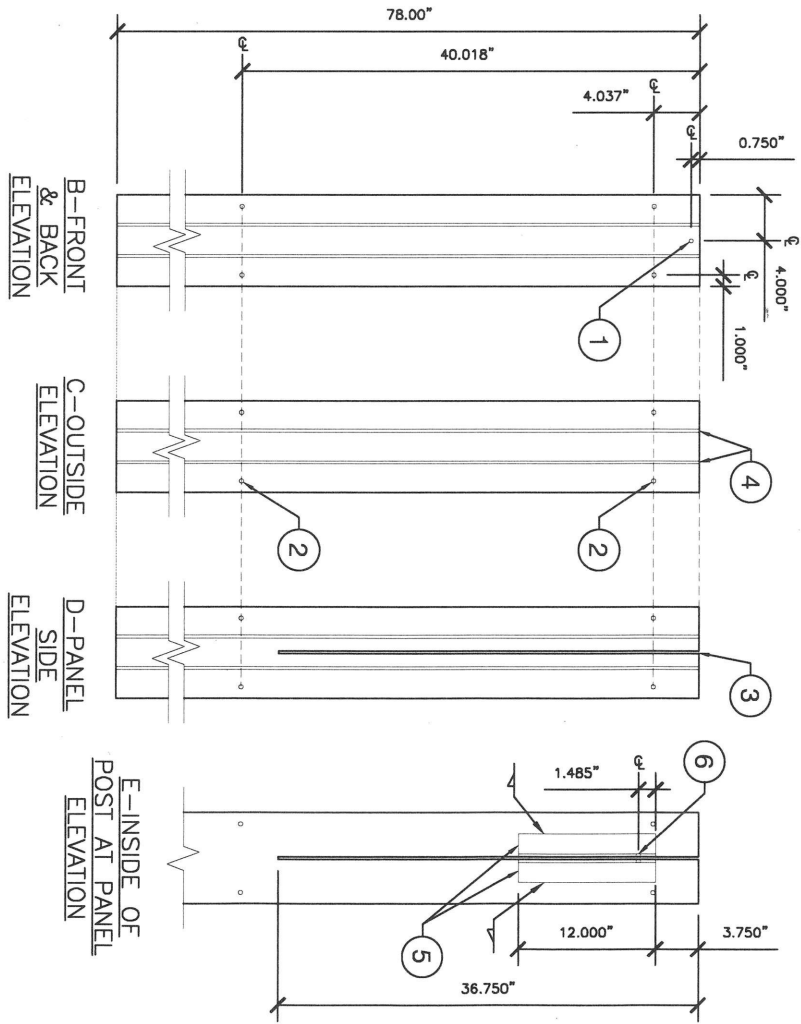
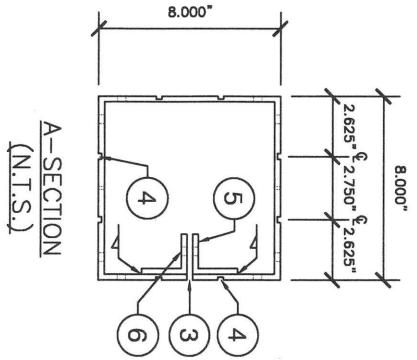
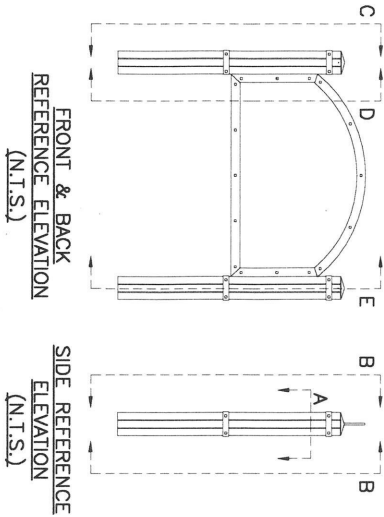




- NOTES:
1. ALL TEXT AND GRAPHICS TO BE MACHINE CUT, NON-REFLECTIVE 3-M SCOTCHCAL #3470 VINYL, OR APPROVED EQUAL.
  2. SIGN PANEL TO RECEIVE ANTI-GRAFFITI LAMINATE FOLLOWING INSTALLATIONS OF TEXT AND GRAPHICS.
  3. TEXT AND GRAPHICS SHOWN ARE FOR REFERENCE ONLY. FINAL GRAPHICS TO BE DETERMINED BY BELLEVUE PARKS. SUBMIT SIGN PROOF FOR FINAL APPROVAL PRIOR TO FABRICATION.

 <p><b>City of Bellevue</b></p>		<p>TITLE:</p> <p><b>SIGN - PARK ENTRY - LARGE - PANEL GRAPHICS</b></p>	
DRAWING #:	PK-SI-01D	SCALE:	N.T.S.
REVISION DATE:	12-2018	DEPARTMENT:	PARKS





- NOTES:
1. POST MATERIAL:  $\frac{1}{4}$ " THICK ALUMINUM, 6061-T6 OR BETTER, MEETING ASTM B221 STANDARDS.
  2. POST COLOR TREATMENT: POWDER COAT APPLICATION WITH "CAPE COD GRAY" OR APPROVED EQUAL.

- 1  $\frac{1}{8}$ " DIA. HOLE TO RECEIVE #6 SET SCREW FOR POST CAP
- 2  $\frac{3}{8}$ " DIA. THREADED HOLE TO RECEIVE  $\frac{3}{8}$ "x16 BOLT FOR MOUNTING ACCENT BANDS
- 3  $\frac{1}{4}$ " SLOT FOR RECEIVING SIGN PANEL
- 4  $\frac{1}{4}$ "x  $\frac{1}{8}$ " DECORATIVE GROOVE
- 5 (2)  $\frac{1}{2}$ " ALUMINUM ANGLE BAR WELDED TO INSIDE OF POST ON BOTH SIDES OF SLOT
- 6  $\frac{3}{8}$ " DIA. HOLE TO RECEIVE FASTENER FOR SECURING PANEL TO POST. FASTENER PROVIDED BY BELLEVUE PARKS.



City of  
Bellevue

TITLE:

# SIGN - PARK ENTRY - LARGE - POST DIMENSIONS

DRAWING #:	PK-SI-01E
SCALE:	N.T.S.
REVISION DATE:	12-2018
DEPARTMENT:	PARKS

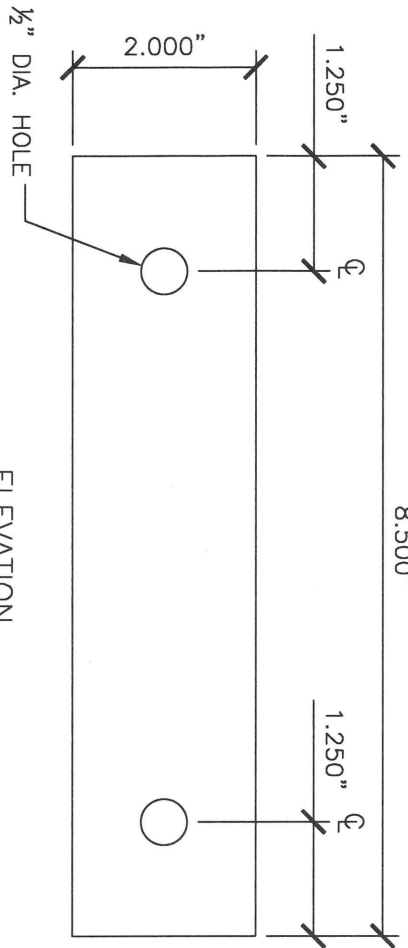


City of  
Bellevue

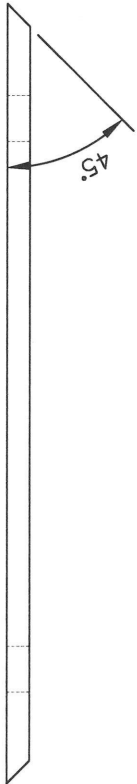
TITLE:

# SIGN - PARK ENTRY - LARGE - POST BAND DIMENSIONS

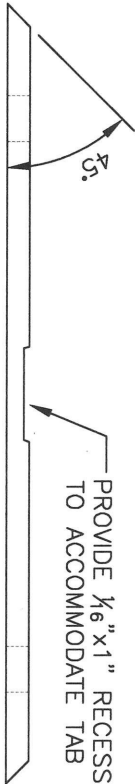
8.500"



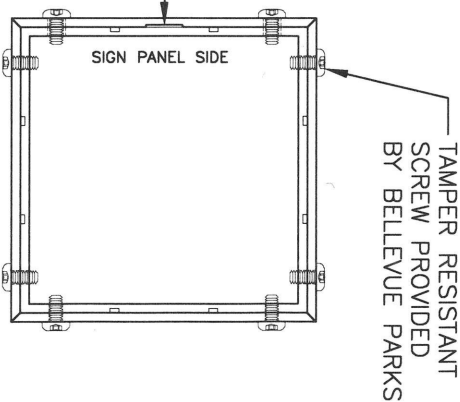
ELEVATION



PLAN



PLAN AT TAB  
LOCATIONS



PLAN SHOWING  
CONNECTION TO POST  
(N.T.S.)

- NOTES:
1. BAND MATERIAL:  $\frac{1}{4}$ " THICK ALUMINUM, 6061-T6 OR BETTER, MEETING ASTM B221 STANDARDS.
  2. BAND COLOR TREATMENT: POWDER COAT APPLICATION WITH TIGER "TURQUOISE BLUE" #RAL-5018 OR APPROVED EQUAL.
  3. HOLES ON BANDS SHALL ALIGN WITH THREADED HOLES ON POSTS WHEN ASSEMBLED.

DRAWING #:

PK-SI-01F

SCALE:

N.T.S.

REVISION DATE:

12-2018

DEPARTMENT:

PARKS



City of  
Bellevue

TITLE:

# SIGN - PARK ENTRY - LARGE - POST TAB COVER DIMENSIONS AND PLACEMENT

DRAWING #:

PK-SI-01G

SCALE:

N.T.S.

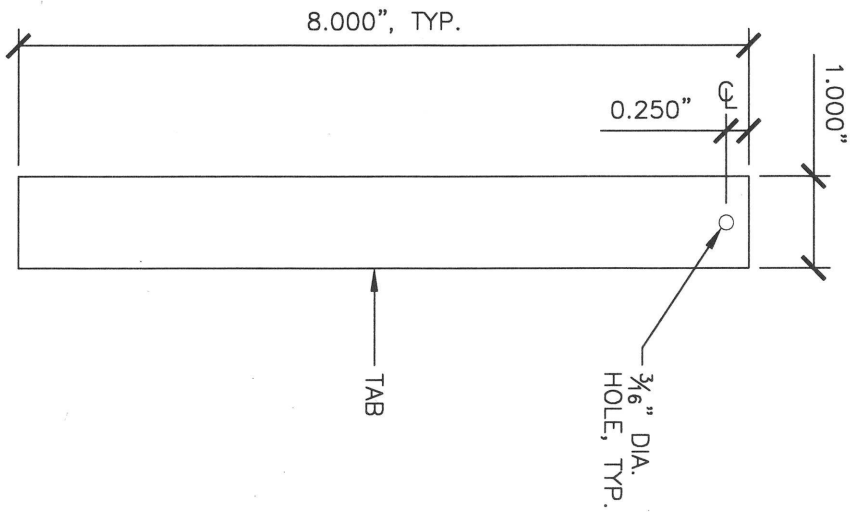
REVISION DATE:

12-2018

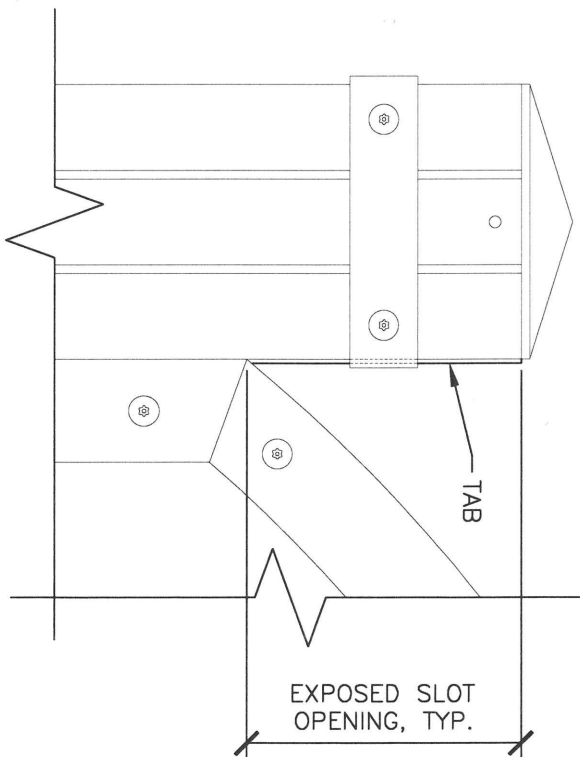
DEPARTMENT:

PARKS

ELEVATION



PLACEMENT  
(N.T.S.)



## NOTES:

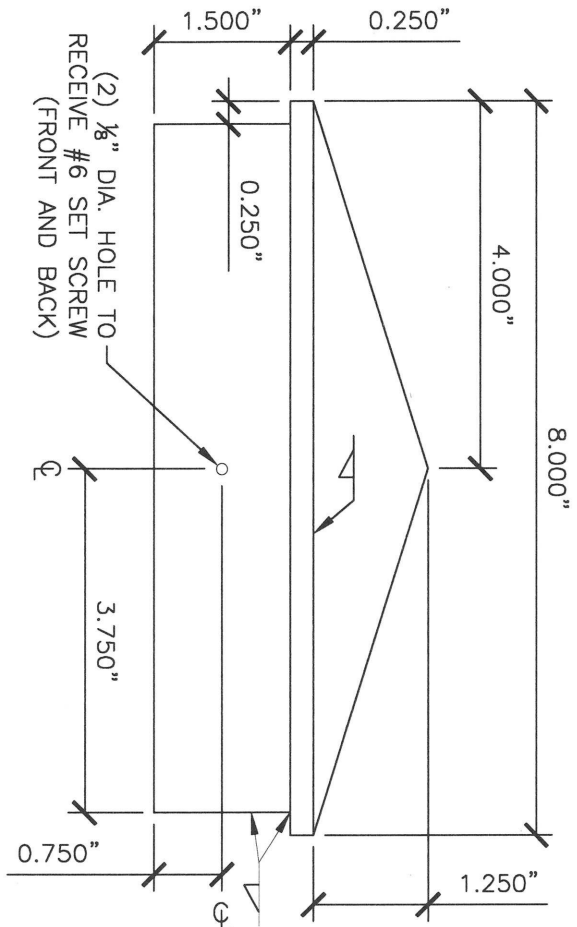
1. TAB MATERIAL:  $\frac{3}{16}$ " THICK ALUMINUM, 6061-T6 OR BETTER, MEETING ASTM B221 STANDARDS.
2. TAB COLOR TREATMENT: POWDER COAT APPLICATION WITH "CAPE COD GRAY" OR APPROVED EQUAL.



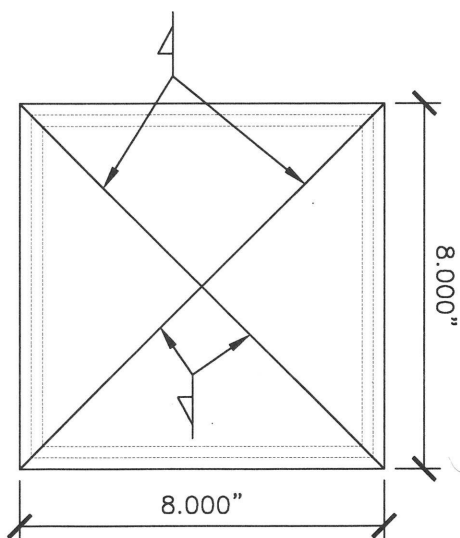
City of  
Bellevue

TITLE:  
**SIGN - PARK ENTRY - LARGE - POST CAP  
DIMENSIONS**

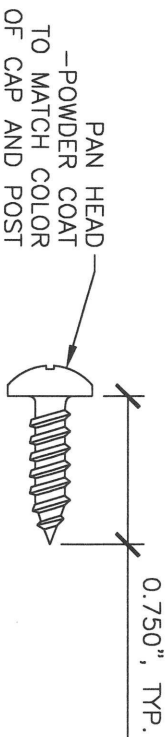
DRAWING #:	PK-SI-01H
SCALE:	N.T.S.
REVISION DATE:	12-2018
DEPARTMENT:	PARKS



ELEVATION



PLAN (N.T.S.)



#6 SET SCREW  
(N.T.S.)

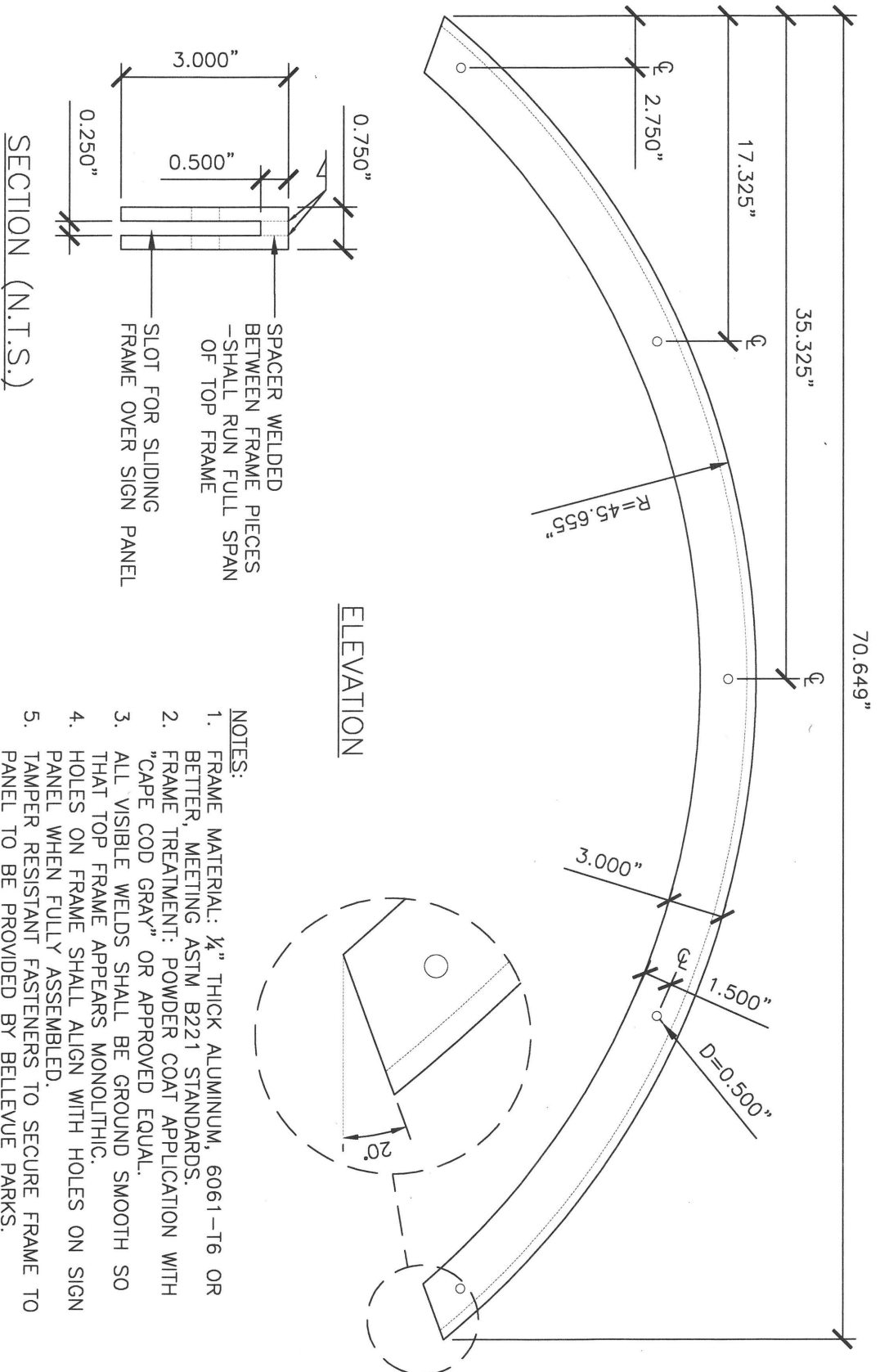
- NOTES:
1. CAP MATERIAL:  $\frac{1}{4}$ " THICK ALUMINUM, 6061-T6 OR BETTER, MEETING ASTM B221 STANDARDS.
  2. CAP AND SCREW COLOR TREATMENT: POWDER COAT APPLICATION WITH "CAPE COD GRAY" OR APPROVED EQUAL.
  3. ALL VISIBLE WELDS (WHEN CAP IS INSERTED WITHIN POST) SHALL BE GROUND SMOOTH SO THAT CAP APPEARS MONOLITHIC.
  4. HOLES ON CAP SHALL ALIGN WITH HOLES ON POSTS WHEN ASSEMBLED.



City of  
Bellevue

TITLE:  
**SIGN - PARK ENTRY - LARGE - TOP FRAME  
DIMENSIONS**

DRAWING #:	PK-SI-011
SCALE:	N.T.S.
REVISION DATE:	12-2018
DEPARTMENT:	PARKS

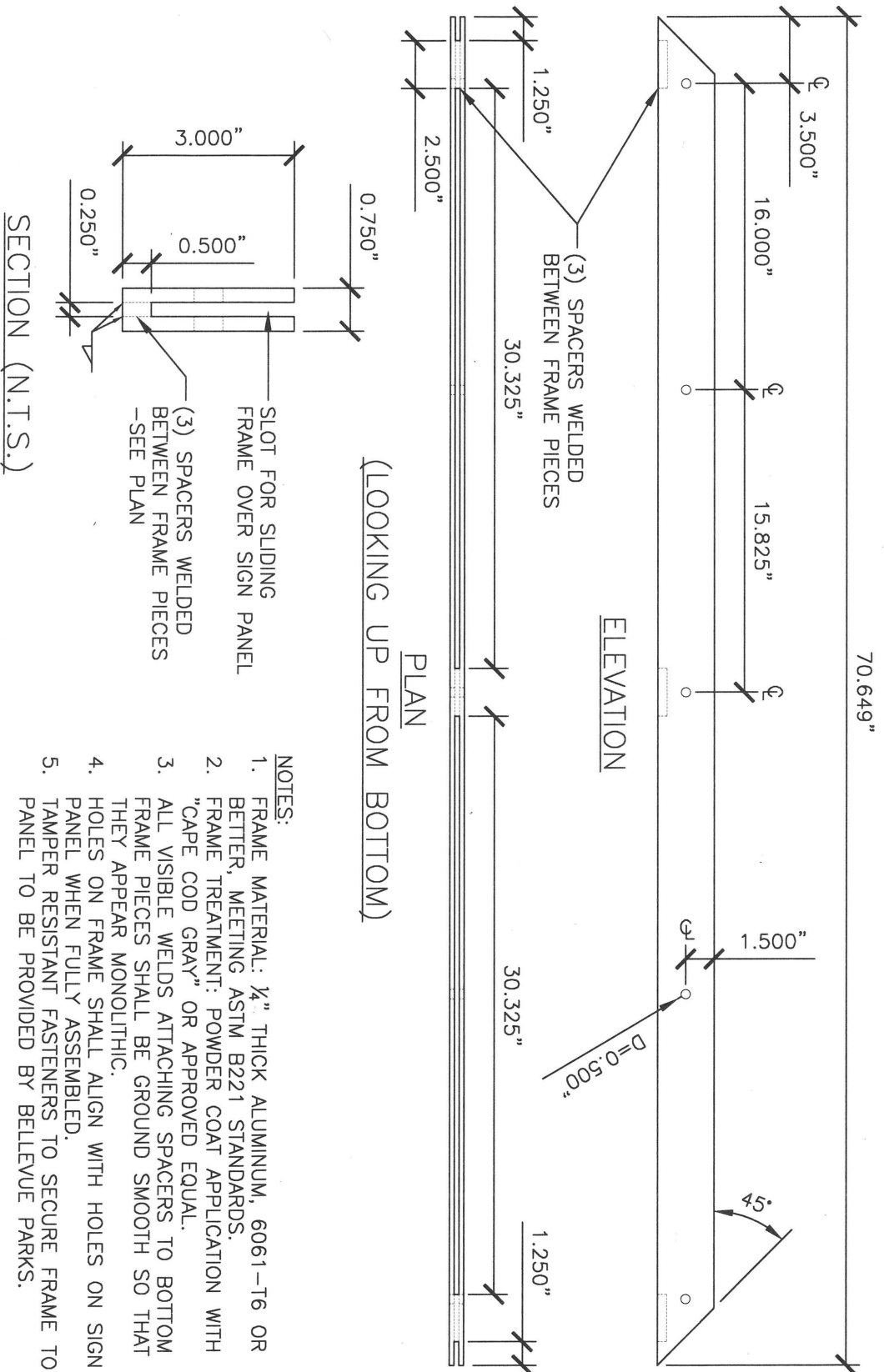




City of  
Bellevue

TITLE:  
**SIGN - PARK ENTRY - LARGE - BOTTOM FRAME  
DIMENSIONS**

DRAWING #:	PK-SI-01J
SCALE:	N.T.S.
REVISION DATE:	12-2018
DEPARTMENT:	PARKS





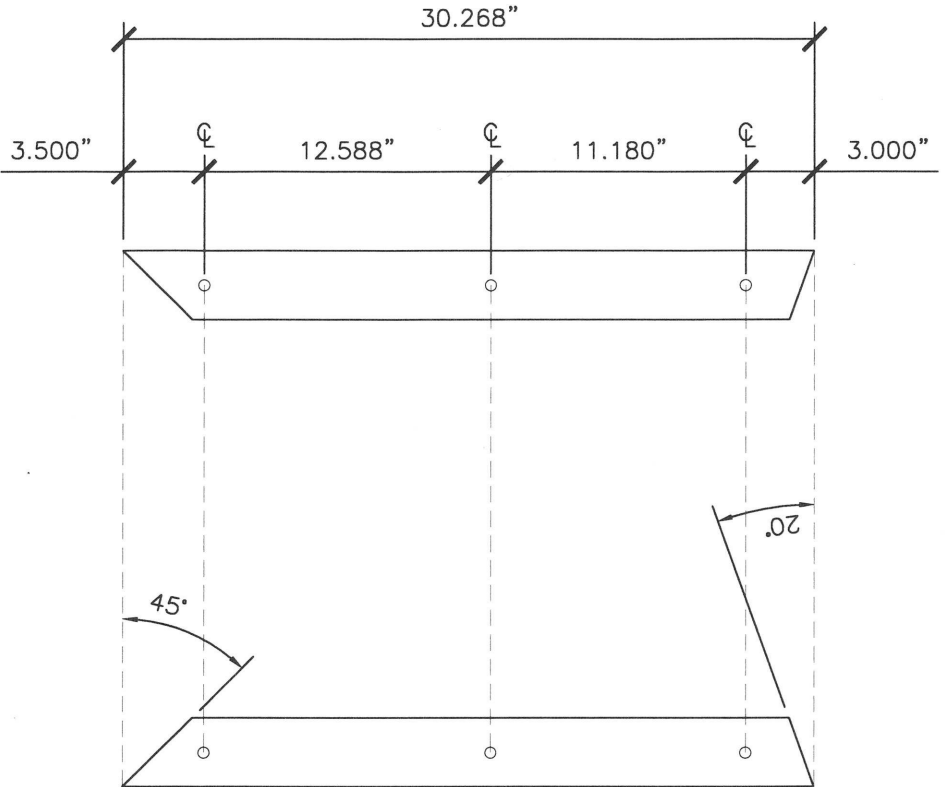
City of  
Bellevue

TITLE:

SIGN - PARK ENTRY - LARGE - SIDE FRAME  
DIMENSIONS

LEFT SIDE  
ELEVATION

RIGHT SIDE  
ELEVATION



NOTES:

1. FRAME MATERIAL: 1/4" THICK ALUMINUM, 6061-T6 OR BETTER, MEETING ASTM B221 STANDARDS.
2. FRAME TREATMENT: POWDER COAT APPLICATION WITH "CAPE COD GRAY" OR APPROVED EQUAL.
3. PROVIDE TWO SETS, ONE FOR EACH SIDE OF PANEL.
4. HOLES ON FRAME PIECES SHALL ALIGN WITH HOLES ON SIGN PANEL WHEN FULLY ASSEMBLED.
5. TAMPER RESISTANT FASTENERS TO SECURE FRAME PIECES TO PANEL TO BE PROVIDED BY BELLEVUE PARKS.

DRAWING #:

PK-SI-01K

SCALE:

N.T.S.

REVISION DATE:

12-2018

DEPARTMENT:

PARKS

## **EXHIBIT "B"**

### **Small Park Entry Sign**

Standard Drawing # PK-SI-02



Parks & Community Services Department





City of  
Bellevue

TITLE:

# SIGN - PARK ENTRY - SMALL - ASSEMBLED DIMENSIONS AND PART IDENTIFICATION

DRAWING #:

PK-SI-02B

SCALE:

N.T.S.

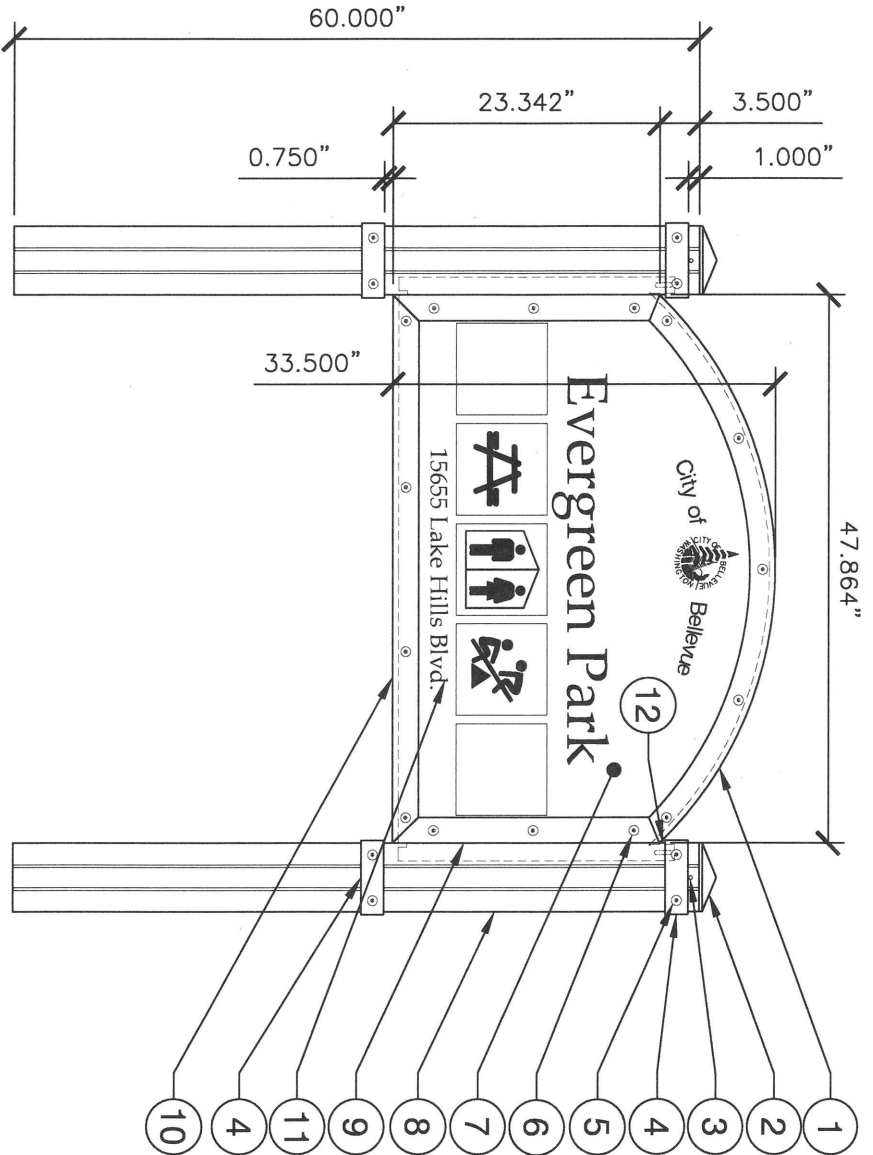
REVISION DATE:

12-2018

DEPARTMENT:

PARKS

- 1 TOP FRAME, PK-SI-02I
- 2 POST CAP, PK-SI-02H
- 3 POST CAP SET SCREW
- 4 POST BAND, PK-SI-02F
- 5 TAMPER RESISTANT BOLT
- 6 TAMPER RESISTANT FASTENER
- 7 SIGN PANEL, PK-SI-02C
- 8 SIGN POST, PK-SI-02E
- 9 SIDE FRAME, PK-SI-02K
- 10 BOTTOM FRAME, PK-SI-02J
- 11 SIGN GRAPHICS, PK-SI-02D
- 12 TAB TO COVER EXPOSED SLOT, PK-SI-02G





City of  
Bellevue

TITLE:

# SIGN - PARK ENTRY - SMALL - PANEL DIMENSIONS

DRAWING #:

PK-SI-02C

SCALE:

N.T.S.

REVISION DATE:

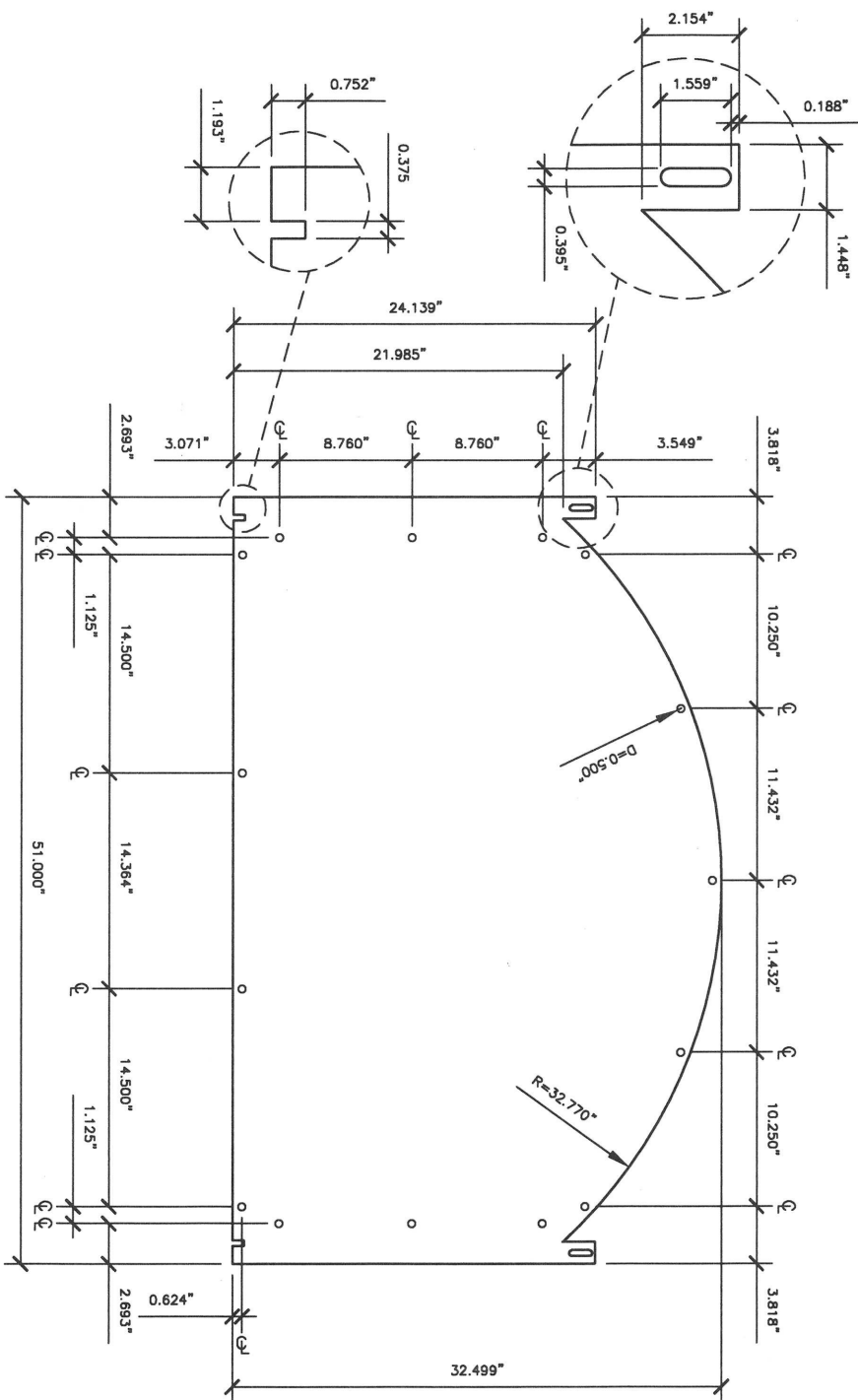
12-2018

DEPARTMENT:

PARKS

## NOTES:

1. PANEL MATERIAL:  $\frac{1}{4}$ " THICK ALUMINUM, 6061-T6 OR BETTER, MEETING ASTM B221 STANDARDS.
2. PANEL COLOR TREATMENT: POWDER COAT APPLICATION WITH TIGER "TURQUOISE BLUE" #RAL-5018 OR APPROVED EQUAL.
3. PANEL TO RECEIVE ANTI-GRAFFITI LAMINATE FOLLOWING INSTALLATION OF GRAPHICS.
4. HOLES ON PANEL SHALL ALIGN WITH HOLES ON FRAME PIECES WHEN FULLY ASSEMBLED.





City of  
Bellevue

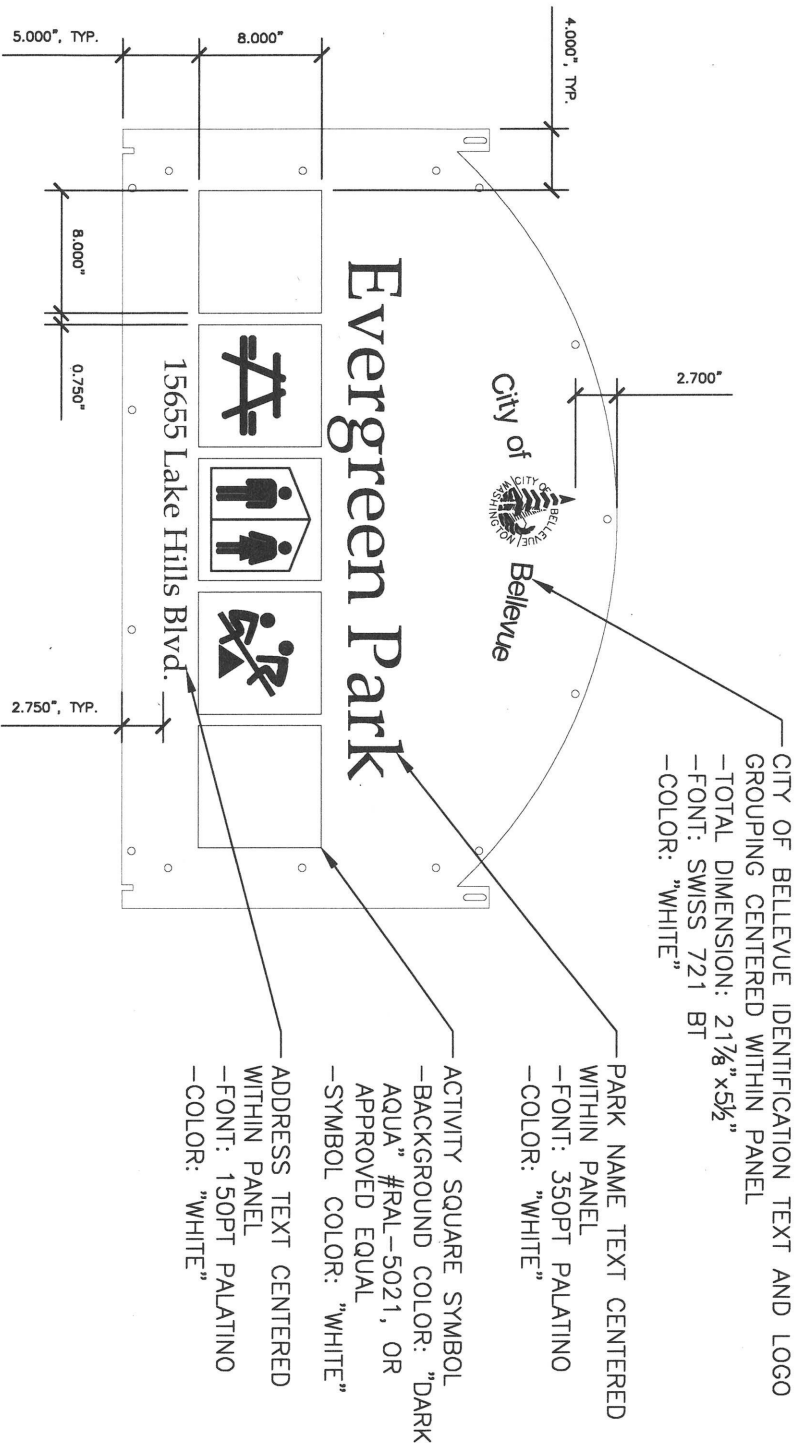
TITLE:

## SIGN - PARK ENTRY - SMALL - PANEL GRAPHICS

DRAWING #:	PK-SI-02D
SCALE:	N.T.S.
REVISION DATE:	12-2018
DEPARTMENT:	PARKS

### NOTES:

1. ALL TEXT AND GRAPHICS TO BE MACHINE CUT, NON-REFLECTIVE 3-M SCOTCHCAL #3470 VINYL, OR APPROVED EQUAL.
2. SIGN PANEL TO RECEIVE ANTI-GRAFFITI LAMINATE FOLLOWING INSTALLATIONS OF TEXT AND GRAPHICS.
3. TEXT AND M GRAPHICS SHOWN ARE FOR REFERENCE ONLY. FINAL GRAPHICS TO BE DETERMINED BY BELLEVUE PARKS. SUBMIT SIGN PROOF FOR FINAL APPROVAL PRIOR TO FABRICATION.





City of  
Bellevue

TITLE:

# SIGN - PARK ENTRY - SMALL - POST DIMENSIONS

DRAWING #:

PK-SI-02E

SCALE:

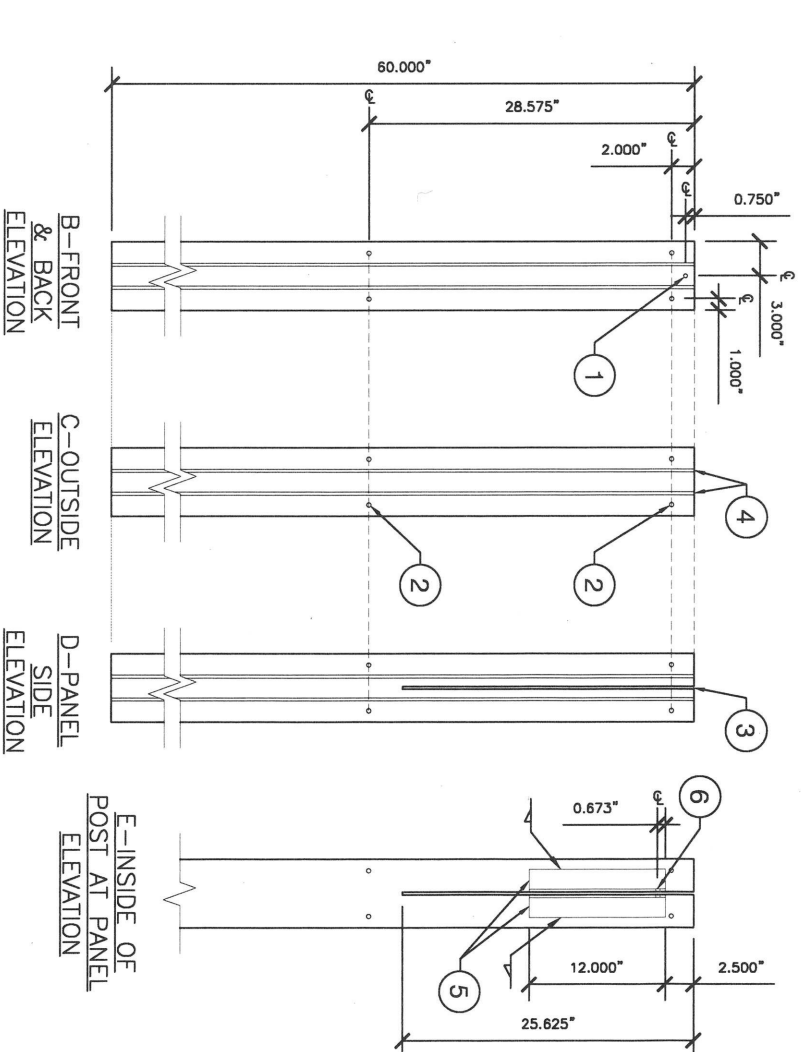
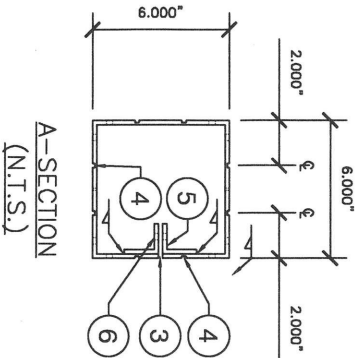
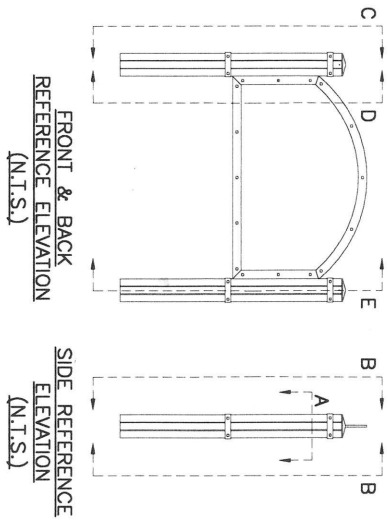
N.T.S.

REVISION DATE:

12-2018

DEPARTMENT:

PARKS



- NOTES:
1. POST MATERIAL:  $\frac{1}{4}$ " THICK ALUMINUM, 6061-T6 OR BETTER, MEETING ASTM B221 STANDARDS.
  2. POST COLOR TREATMENT: POWDER COAT APPLICATION WITH "CAPE COD GRAY" OR APPROVED EQUAL.

- 1  $\frac{1}{8}$ " DIA. HOLE TO RECEIVE #6 SET SCREW FOR POST CAP
- 2  $\frac{3}{8}$ " DIA. THREADED HOLE TO RECEIVE  $\frac{3}{8}$ "x16 BOLT FOR MOUNTING ACCENT BANDS
- 3  $\frac{1}{4}$ " SLOT FOR RECEIVING SIGN PANEL
- 4  $\frac{1}{4}$ "x  $\frac{1}{8}$ " DECORATIVE GROOVE
- 5 (2)  $\frac{1}{2}$ " ALUMINUM ANGLE BAR WELDED TO INSIDE OF POST ON BOTH SIDES OF SLOT
- 6  $\frac{3}{8}$ " DIA. HOLE TO RECEIVE FASTENER FOR SECURING PANEL TO POST. FASTENER PROVIDED BY BELLEVUE PARKS.

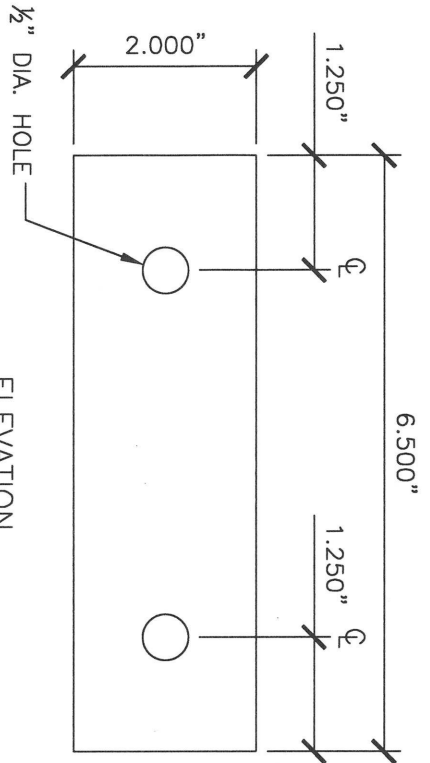


City of  
Bellevue

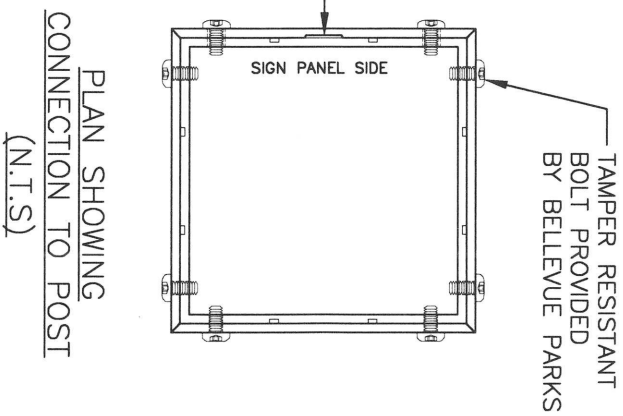
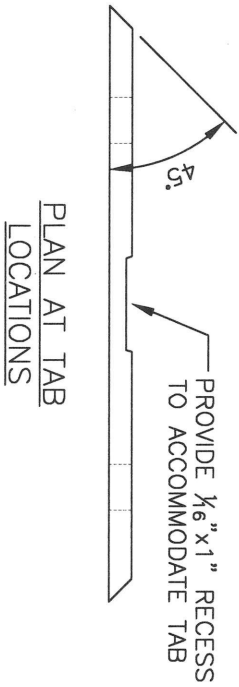
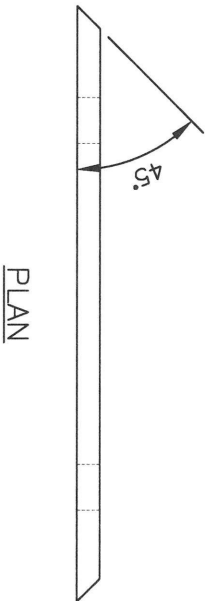
TITLE:

# SIGN - PARK ENTRY - SMALL- POST BAND DIMENSIONS

DRAWING #:	PK-SI-02F
SCALE:	N.T.S.
REVISION DATE:	12-2018
DEPARTMENT:	PARKS



- NOTES:
1. BAND MATERIAL:  $\frac{1}{4}$ " THICK ALUMINUM, 6061-T6 OR BETTER, MEETING ASTM B221 STANDARDS.
  2. BAND COLOR TREATMENT: POWDER COAT APPLICATION WITH TIGER "TURQUOISE BLUE" #RAL-5018 OR APPROVED EQUAL.
  3. HOLES ON BANDS SHALL ALIGN WITH THREADED HOLES ON POSTS WHEN ASSEMBLED.





City of  
Bellevue

TITLE:

# SIGN - PARK ENTRY - SMALL - POST TAB COVER DIMENSIONS AND PLACEMENT

DRAWING #:

PK-SI-02G

SCALE:

N.T.S.

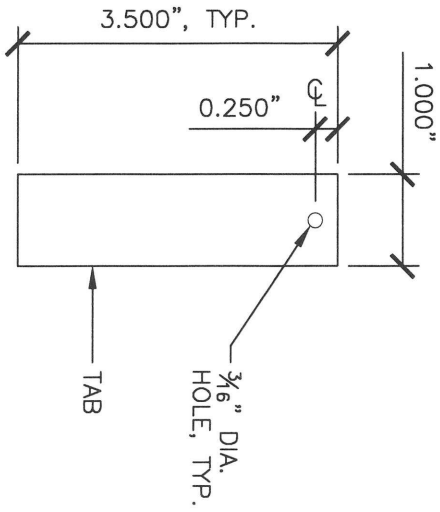
REVISION DATE:

12-2018

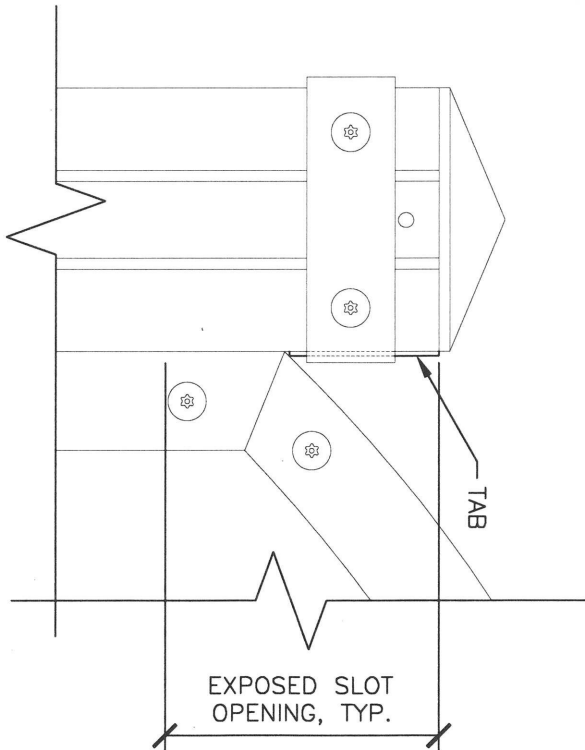
DEPARTMENT:

PARKS

ELEVATION



PLACEMENT  
(N.T.S.)



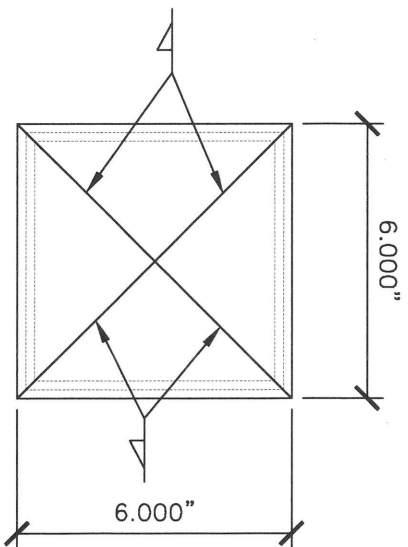
NOTES:

1. TAB MATERIAL:  $\frac{1}{8}$ " THICK ALUMINUM, 6061-T6 OR BETTER, MEETING ASTM B221 STANDARDS.
2. TAB COLOR TREATMENT: POWDER COAT APPLICATION WITH "CAPE COD GRAY" OR APPROVED EQUAL.



## SIGN - PARK ENTRY - SMALL - POST CAP DIMENSIONS

DRAWING #:	PK-SI-02H
SCALE:	N.T.S.
REVISION DATE:	12-2018
DEPARTMENT:	PARKS



PLAN (N.T.S.)

0.750", TYP.

PAN HEAD  
—POWDER COAT  
TO MATCH COLOR  
OF CAP AND POST

#6 SET SCREW  
(N.T.S.)

The drawing shows a side view of a screw. A dimension line with arrows at both ends indicates the length of the screw, labeled '0.750", TYP.'. A leader line points to the flat top of the screw head, labeled 'PAN HEAD'. Below this, text reads '—POWDER COAT TO MATCH COLOR OF CAP AND POST'. The screw has a threaded shaft and a pointed tip. Below the drawing, the text '#6 SET SCREW' is underlined, and '(N.T.S.)' is written below that.

1. CAP MATERIAL: ¼" THICK ALUMINUM, 6061-T6 OR BETTER, MEETING ASTM B221 STANDARDS.
2. CAP AND SCREW COLOR TREATMENT: POWDER COAT APPLICATION WITH "CAPE COD GRAY" OR APPROVED EQUAL.
3. ALL VISIBLE WELDS (WHEN CAP IS INSERTED WITHIN POST) SHALL BE GROUND SMOOTH SO THAT CAP APPEARS MONOLITHIC.
4. HOLES ON CAP SHALL ALIGN WITH HOLES ON POSTS WHEN ASSEMBLED.



City of  
Bellevue

TITLE:

# SIGN - PARK ENTRY - SMALL - TOP FRAME DIMENSIONS

DRAWING #:

PK-SI-021

SCALE:

N.T.S.

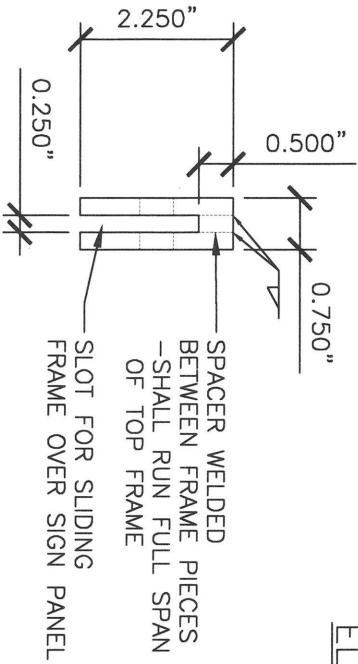
REVISION DATE:

12-2018

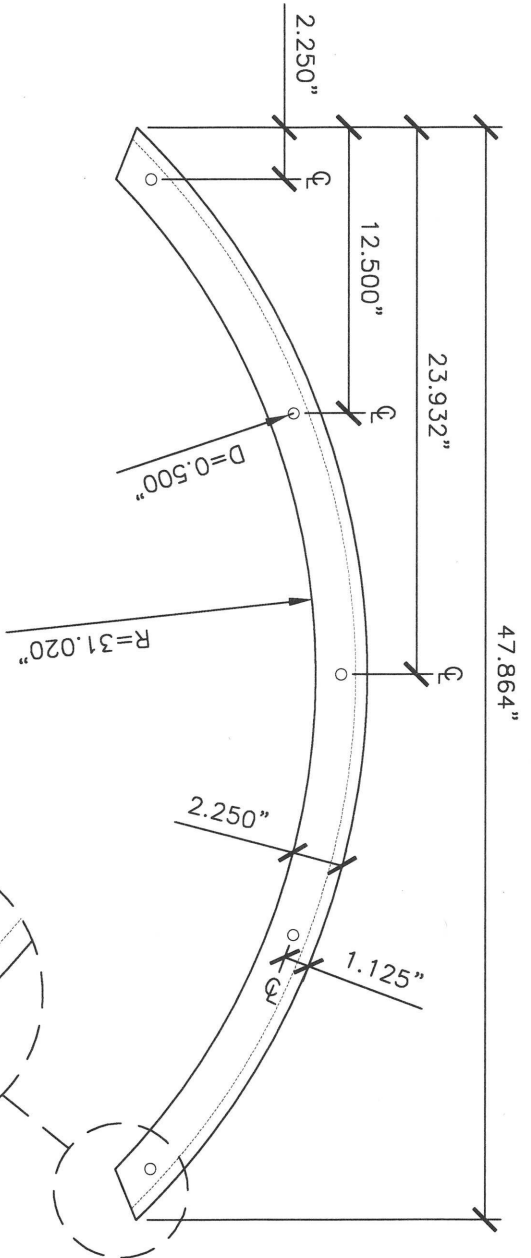
DEPARTMENT:

PARKS

## SECTION (N.T.S.)

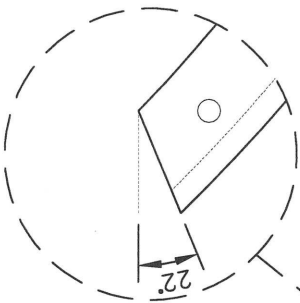


## ELEVATION



### NOTES:

1. FRAME MATERIAL:  $\frac{1}{4}$ " THICK ALUMINUM, 6061-T6 OR BETTER, MEETING ASTM B221 STANDARDS.
2. FRAME TREATMENT: POWDER COAT APPLICATION WITH "CAPE COD GRAY" OR APPROVED EQUAL.
3. ALL VISIBLE WELDS SHALL BE GROUND SMOOTH SO THAT TOP FRAME APPEARS MONOLITHIC.
4. HOLES ON FRAME SHALL ALIGN WITH HOLES ON SIGN PANEL WHEN FULLY ASSEMBLED.
5. TAMPER RESISTANT FASTENERS TO SECURE FRAME TO PANEL TO BE PROVIDED BY BELLEVUE PARKS.





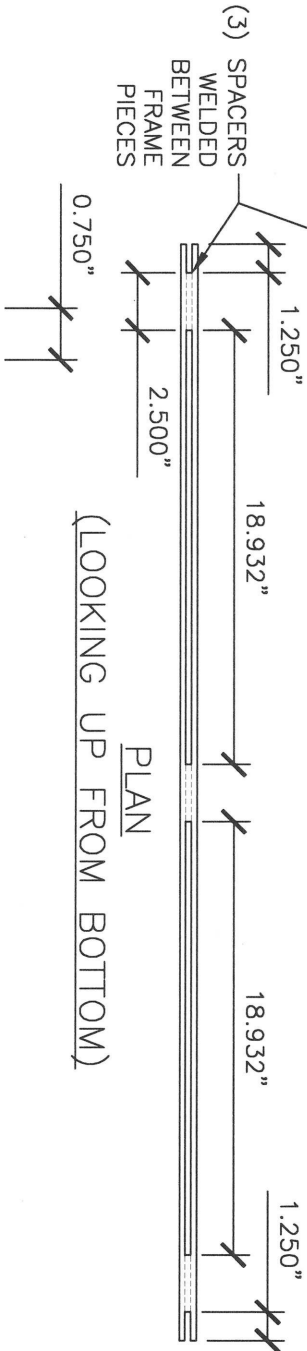
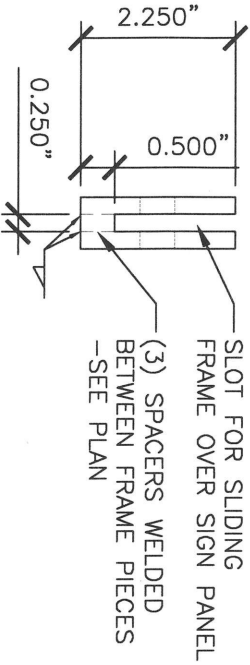


City of  
Bellevue

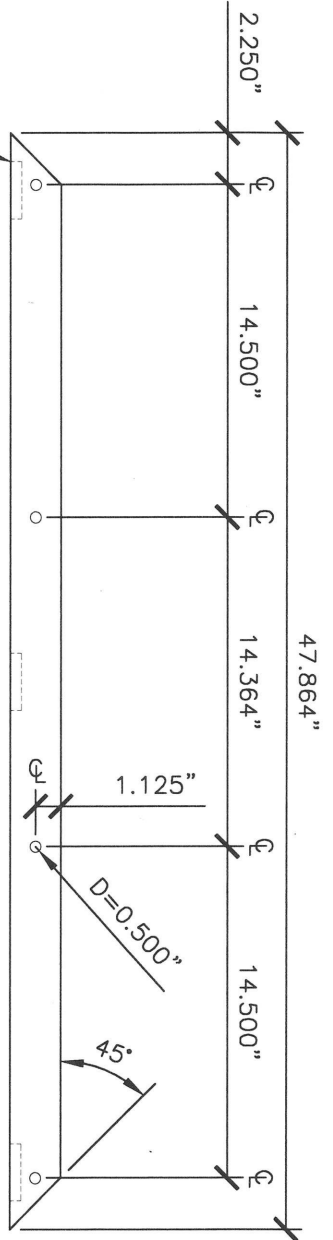
TITLE:  
**SIGN - PARK ENTRY - SMALL - BOTTOM FRAME  
DIMENSIONS**

DRAWING #:	PK-SI-02J
SCALE:	N.T.S.
REVISION DATE:	12-2018
DEPARTMENT:	PARKS

SECTION (N.T.S.)



ELEVATION



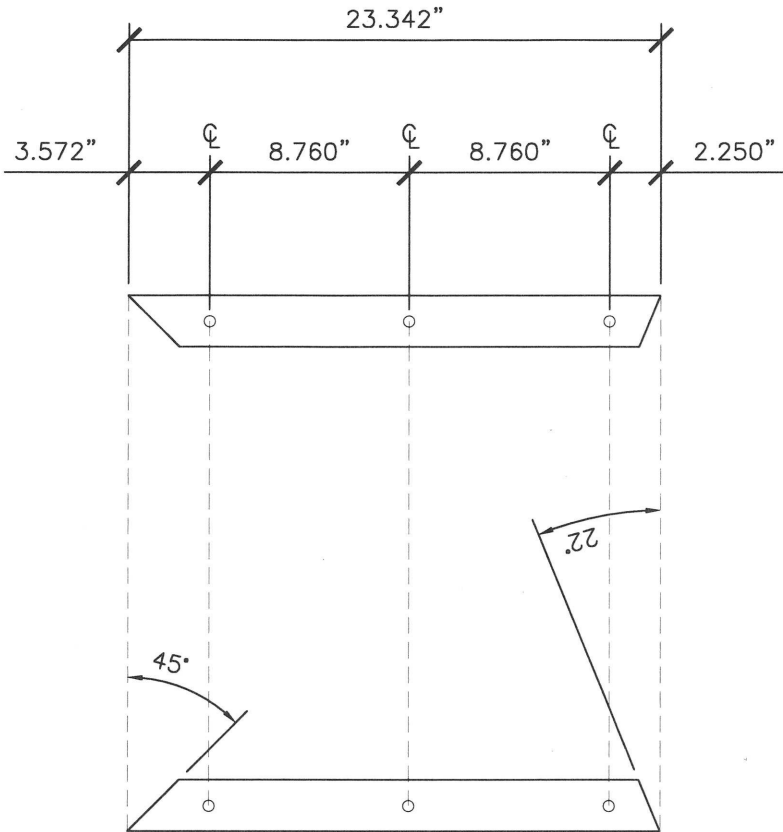
NOTES:

1. FRAME MATERIAL:  $\frac{1}{4}$ " THICK ALUMINUM, 6061-T6 OR BETTER, MEETING ASTM B221 STANDARDS.
2. FRAME TREATMENT: POWDER COAT APPLICATION WITH "CAPE COD GRAY" OR APPROVED EQUAL.
3. ALL VISIBLE WELDS ATTACHING SPACERS TO BOTTOM FRAME PIECES SHALL BE GROUND SMOOTH SO THAT THEY APPEAR MONOLITHIC.
4. HOLES ON FRAME SHALL ALIGN WITH HOLES ON SIGN PANEL WHEN FULLY ASSEMBLED.
5. TAMPER RESISTANT FASTENERS TO SECURE FRAME TO PANEL TO BE PROVIDED BY BELLEVUE PARKS.



City of  
Bellevue

TITLE:  
**SIGN - PARK ENTRY - SMALL - SIDE FRAME  
DIMENSIONS**



LEFT SIDE  
ELEVATION

RIGHT SIDE  
ELEVATION

NOTES:

1. FRAME MATERIAL:  $\frac{1}{4}$ " THICK ALUMINUM, 6061-T6 OR BETTER, MEETING ASTM B221 STANDARDS.
2. FRAME TREATMENT: POWDER COAT APPLICATION WITH "CAPE COD GRAY" OR APPROVED EQUAL.
3. PROVIDE TWO SETS, ONE FOR EACH SIDE OF PANEL.
4. HOLES ON FRAME PIECES SHALL ALIGN WITH HOLES ON SIGN PANEL WHEN FULLY ASSEMBLED.
5. TAMPER RESISTANT FASTENERS TO SECURE FRAME PIECES TO PANEL TO BE PROVIDED BY BELLEVUE PARKS.

DRAWING #:	PK-SI-02K
SCALE:	N.T.S.
REVISION DATE:	12-2018
DEPARTMENT:	PARKS