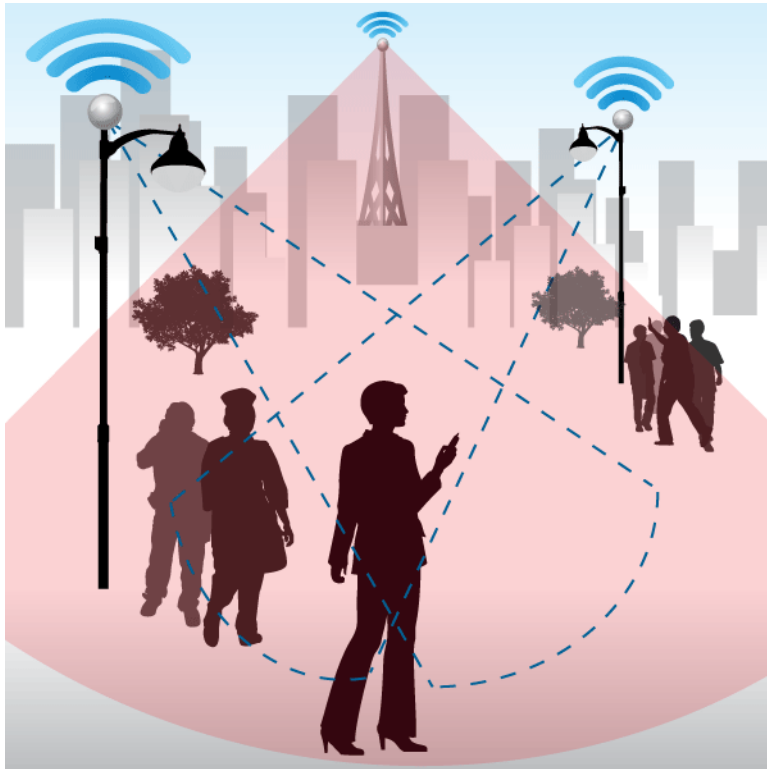


Small Wireless Facilities Phase 2



Mark Poch, Assistant Director
Rick Logwood, Right of Way Manager
Transportation Department

Monica Buck, Assistant City Attorney
City Attorney's Office

March 4, 2019
Council Study Session



City of Bellevue

Agenda

Purpose:

- Small Wireless Facilities (SWF) Phase 2:
 - Purpose-built Poles
 - Strand mount SWFs
- Direction for March 18th Regular Session



Background
Code Amendments
Leases & Permitting
Recommendation
Council Direction



Planning for a Smarter City

Background

- FCC Order & Small Wireless Facilities (SWF)
- City's response:
 - Phase 1 (completed):
 - January 7 Study Session & January 22 Regular Session
 - Amended 6.02 and added 6.08 in Telecommunications Code
 - SWF regulated in Telecommunications code not Land Use code
 - SWF co-location provisions on city and utility poles
 - SWF application requirements and design standards
 - Master License Agreement
 - Umbrella license to use City-owned poles for SWF
 - ➔ • **Phase 2 (this action):** Amend Chapters 6.02 and 6.08 BCC to:
 - Add Purpose-built Poles
 - Add Strand mount SWF
 - Meet FCC deadline
 - Phase 3 (future action):
 - Address SWF on city and private property
 - Conformance amendments to Comprehensive Plan and Land Use Code



Phase 2 - Proposed Code Amendments

6.02 BCC:

- Include and define Purpose-built Poles and Strand mounted SWFs.

6.08 BCC:

- Establish when Purpose-built Poles are allowed
- Establish design standards for Purpose-built Poles and Strand mounted SWFs

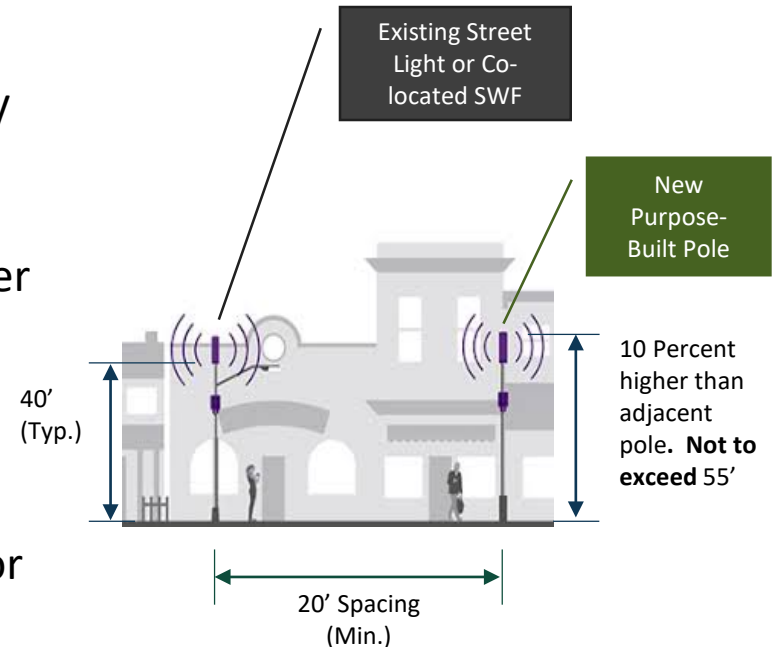
Previous Amendments:

- Phase 2 Amendments retain Phase 1 code regarding:
 - Administration
 - Permitting/Deployment
 - SWF Design standards
 - Review/Inspections
 - Modification & removal



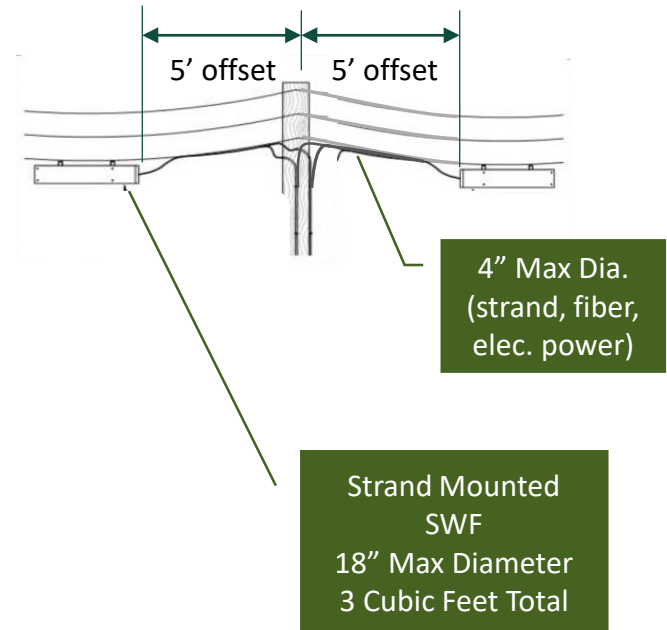
Purpose-built Pole specifics

- Permitted only when co-location on a City or utility pole is not feasible
- No greater than 55' including antenna, or 10% taller than an adjacent pole
- Located entirely within the right-of-way
- No closer than 20 feet of an adjacent City, Utility, or Purpose-built pole
- Aesthetically compatible with existing utility poles or design district standards for City poles
- Meets applicable Transportation Design standards



Strand mounted specifics

- No more than two SWFs located between two poles
- SWF located within five feet of the pole, unless otherwise prohibited by other safety criteria/standards
- Within structural limits of the span, pole, or pole attachment
- No more than 18 inches in diameter and three cubic feet in volume
- Limits overlashing of strand, fiber, electrical and all cabling to a maximum cumulative dimension of four inches
- SWFs shall not be located on strands that cross the right-of-way



Lease and Permit Requirements



- Purpose-built Poles and Strand mounted SWF:
 - Are carrier owned equipment
 - Do not trigger a Master License Agreement (MLA)
 - Require Right-of-Way permits and associated permit fees
 - Fees cover review and inspection
- Purpose-built Poles are:
 - Subject to annual lease fee of \$270 per pole (plus inflation)
 - Annual lease rent at fair market value per pole if FCC Order is overturned
- Strand mounted SWF are:
 - Attached to carrier facilities and PSE or carrier owned poles
 - City lease fees may apply in certain applications, i.e. city strand

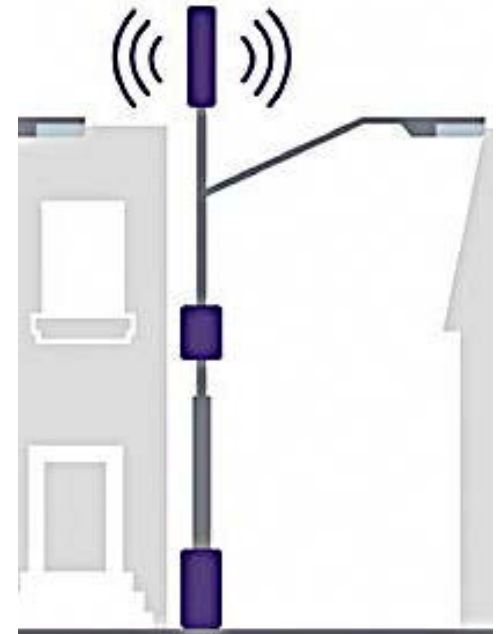
Highlights

- Carrier input, coordination and support
- Proposed Code amendments advance city's response to FCC Order and effectively implement SWFs
 - Second of three phases
 - Council approval of proposed Amendments on 3/18/19 will meet April 15th deadline
- Advances Bellevue Smart plan



Recommendations

- ✓ Staff recommendation - return on March 18, 2019:
 - Ordinance amending Chapters 6.02 and 6.08 of the Telecommunications Title of the Bellevue City Code to include provisions for Purpose-Built Poles and Strand mount Small Wireless Facilities within Right-of-Way

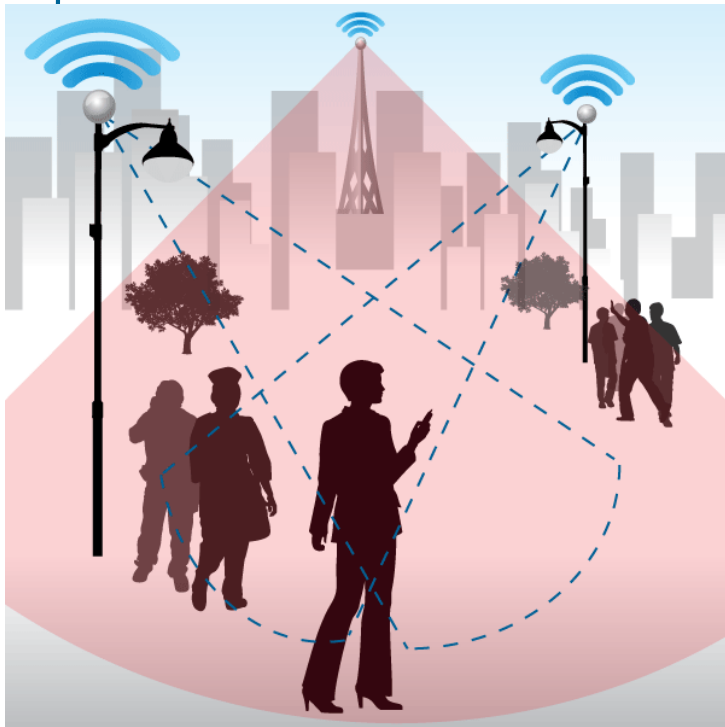


Small Wireless Facilities

Phase 2

March 4, 2019
Council Study Session

Questions & Direction



Staff is seeking direction to return on March 18, 2019 with an Ordinance amending Chapters 6.02 and 6.08 Bellevue City Code (BCC) to include provisions for Purpose-Built Poles and Strand mounted Small Wireless Facilities within Right-of-Way